

MINIMUM SIZES OF SEA FISH

| | |
|---|--|
| Anchovy (<i>Engraulis encrasicolus</i>) | 12 cm. |
| Ballan Wrasse (<i>Labrus bergylta</i>) | 34 cm |
| Bass (<i>Dicentrarchus labrax</i>) | Slot size 50 cm minimum to 60 cm maximum |
| Bean Solen (<i>Pharus legumen</i>) | 65 mm. |
| Blue Ling (<i>Molva dypterygia</i>) | 70 cm. |
| Carpetshell (<i>Venerupis pullastra</i>) | 38 mm. |
| Clam (<i>Venus verrucosa</i>) | 40 mm. |
| Cod (<i>Gadus morhua</i>) | 35 cm. |
| Crawfish (<i>Palinurus</i> spp.) | 110 mm. |
| Deepwater Rose Shrimp (<i>Parapenaeus longirostirs</i>) | 22 mm. |
| Donax clams (<i>Donax</i> spp.) | 25 mm. |
| Edible crab (<i>Cancer pagurus</i>) | 140 mm. |
| Grooved carpetshell (<i>Ruditapes decussatus</i>) | 40 mm. |
| Haddock (<i>Melanogrammus aeglefinus</i>) | 30 cm. |
| Hake (<i>Merluccius merluccius</i>) | 27 cm. |
| Hard clam (<i>Callista chione</i>) | 6 cm. |
| Herring (<i>Clupea harengus</i>) | 20 cm. |
| Horse mackerel (<i>Trachurus</i> spp.) | 15 cm. |
| Ling (<i>Molva molva</i>) | 63 cm. |
| Lobster (<i>Homarus gammarus</i>) | 88 mm. |
| Mackerel (<i>Scomber</i> spp.) | 20 cm. |
| Megrim (<i>Lepidorhombus</i> spp.) | 20 cm. |

Minimum size

| | |
|---|-------------|
| Norway lobster (<i>Nephrops norvegicus</i>) total length | 70 mm. |
| Norway lobster (<i>Nephrops norvegicus</i>) tails | 37 mm. |
| Norway lobster (<i>Nephrops norvegicus</i>) carapace length | 20 mm |
| Octopus | 750 grammes |
| Plaice (<i>Pleuronectes platessa</i>) | 27 cm. |
| Pollack (<i>Pollachius pollachius</i>) | 30 cm. |
| Queen scallop (<i>Chlamys opercularis</i>) | 55 mm. |
| Razor clam (<i>Ensis</i> spp., <i>Pharus legumen</i>) | 10 cm. |
| Saithe (<i>Pollachius virens</i>) | 35 cm. |
| Sardine (<i>Sardina pilchardus</i>) | 11 cm. |
| Scallop (<i>Pecten maximus</i>) | 110 mm. |
| Short-necked clam (<i>Ruditapes philippinarum</i>) | 40 mm. |
| Sole (<i>Solea vulgaris</i>) | 24 cm. |
| Spinous spider crab (<i>Maia squinado</i>) | |
| - cock crab | 130 mm. |
| - hen crab | 120 mm. |
| Surf clams (<i>Spisula solidissima</i>) | 25 mm. |
| Velvet crab (<i>Necora puber</i> or <i>Liocarcinus puber</i>) | 65 mm. |
| Whelk (<i>Buccinum undatum</i>) | 70 mm. |
| Whiting (<i>Merlangius merlangus</i>) | 27 cm. |

MEASUREMENT OF THE SIZE OF A SEA-FISH

1. The size of any fish shall be measured as shown in Figure 1, from the tip of the snout to the end of the tail fin.
2. The size of Norway lobster shall be measured as shown in Figure 2:
 - as the length of the carapace, parallel to the midline, from the back of either eye socket to the distal edge of the carapace, and/or
 - as the total length, from the tip of the rostrum to the rear end of the telson, not including the setae; and/or
 - in the case of detached Norway lobster tails, from the front edge of the first tail segment present to the rear end of the telson, not including the setae. The tail shall be measured flat, unstretched and on the dorsal side.
3. The size of a lobster or crawfish shall be measured as shown in Figure 3, as the length of the carapace, parallel to the midline, from the back of either eye socket to the distal edge of the carapace.
4. The size of a spinous spider crab shall be measured as shown in Figure 4, as the length of the carapace, along the midline, from the edge of the carapace between the rostrums to the posterior edge of the carapace.
5. The size of an edible crab shall be measured as shown in Figure 5, as the maximum width of the carapace measured perpendicular to the antero-posterior midline of the carapace.
6. The size of any bivalve mollusc shall be measured as shown in Figure 6, across the longest part of the shell.
7. The size of a whelk shall be measured as shown in Figure 5 as the length of the shell.

Fig 1

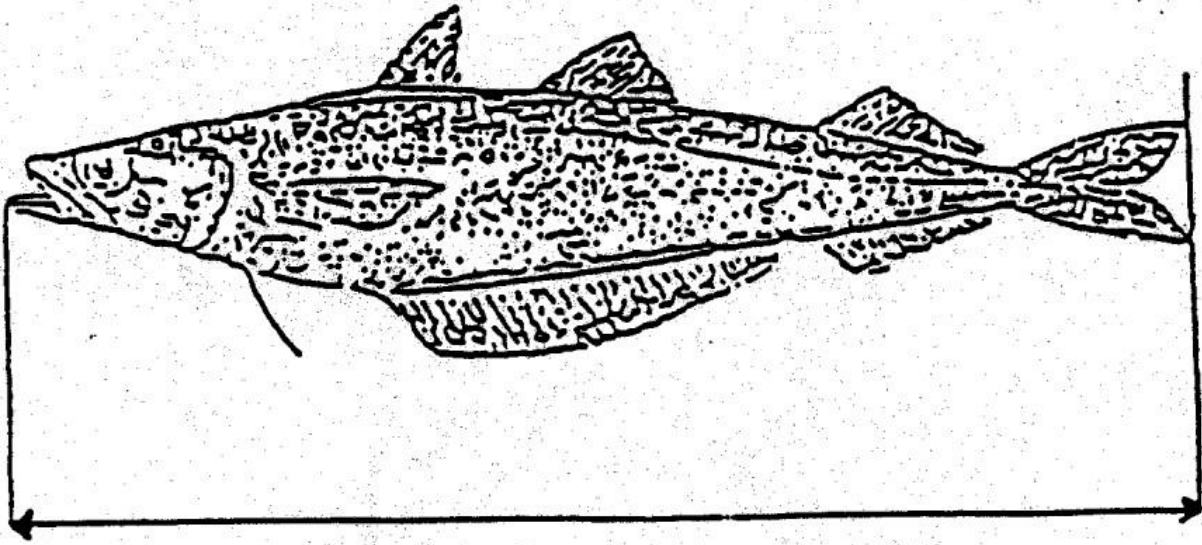


Fig 2
(a) Carapace length
(b) Overall length
Nephrops
Norway Lobster

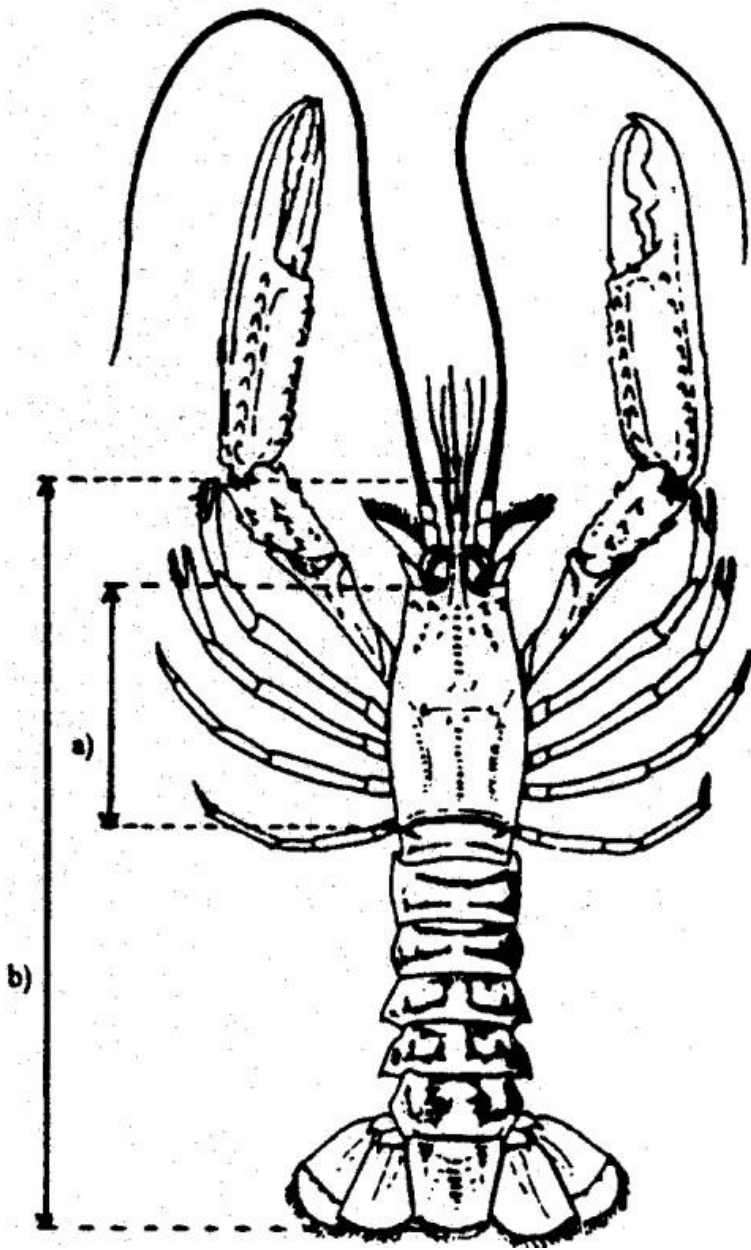


Fig 3
(a) Carapace length
(b) Overall length
Lobster

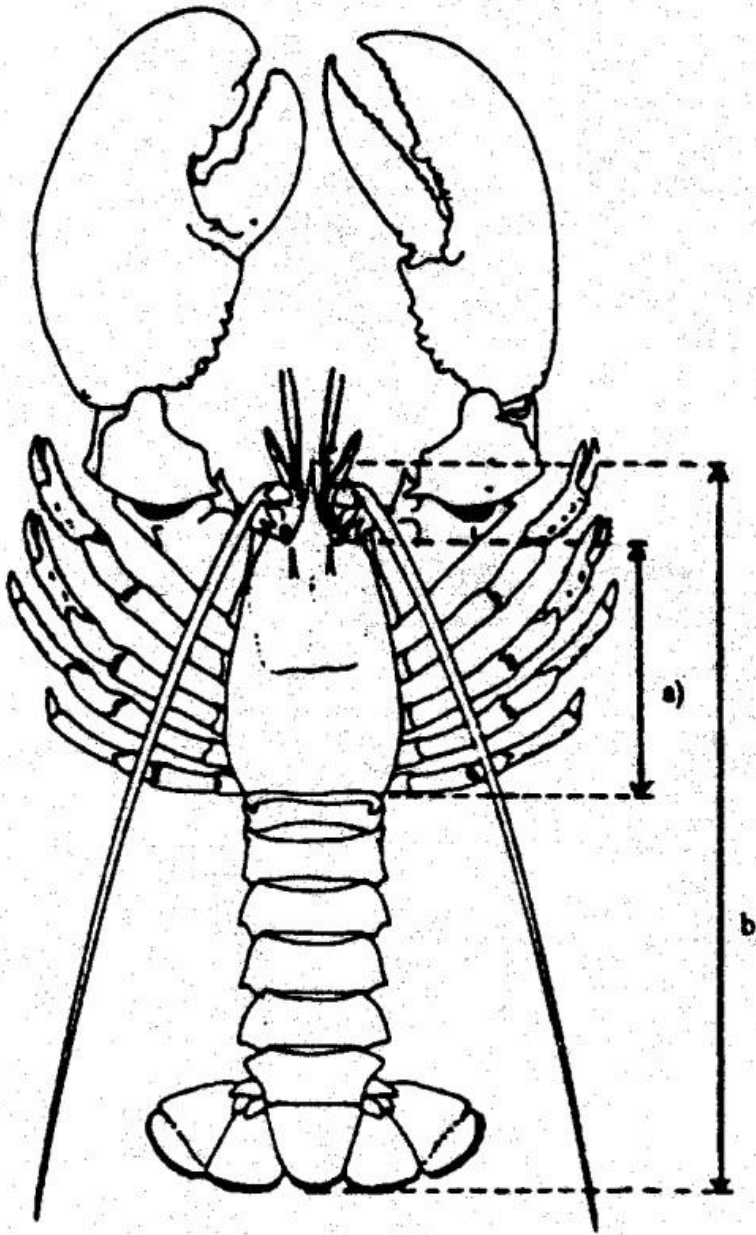


Figure 4
(*Maia squinado*)
Spinous spider crab

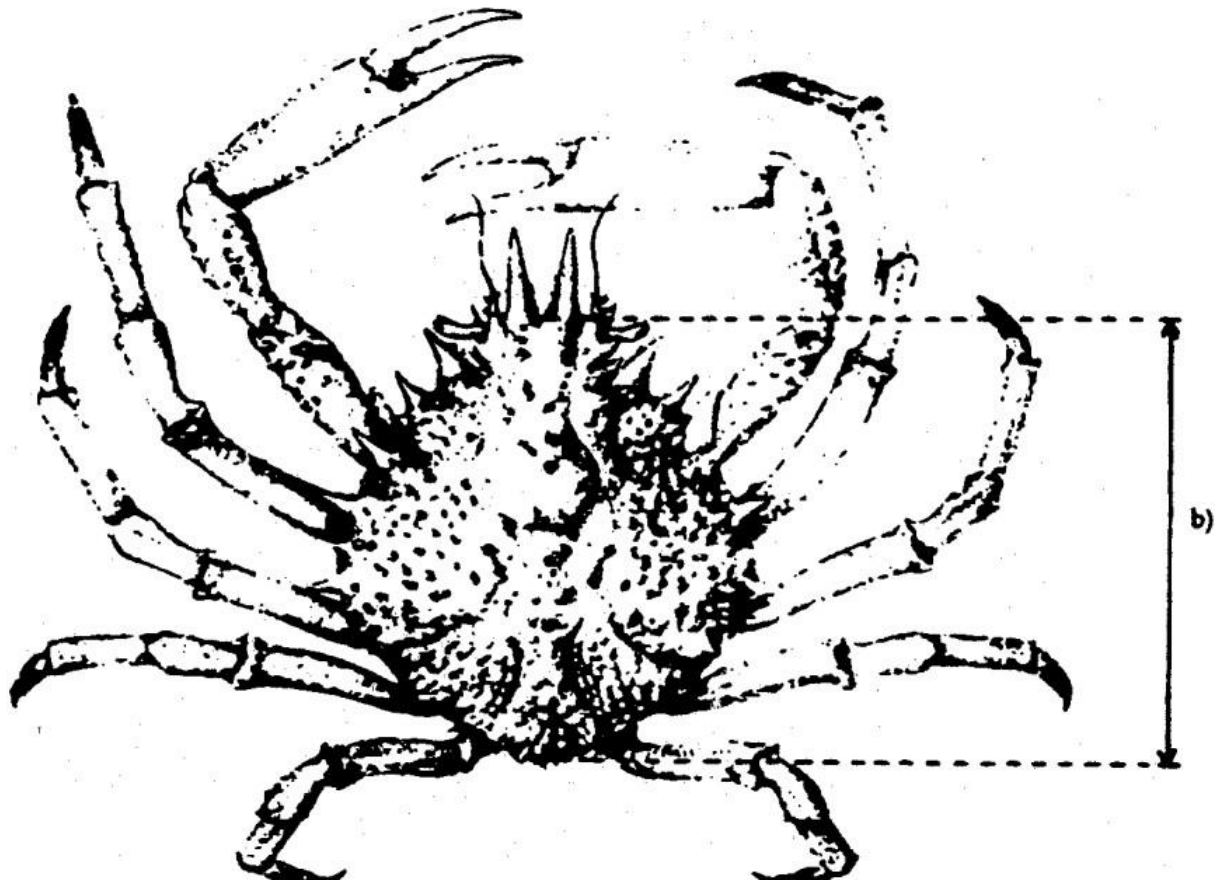


Figure 5
(*Cancer pagurus*)
Edible crab

- (a) Maximum width of carapace
- (b) Length of carapace
- (c) Length of claw

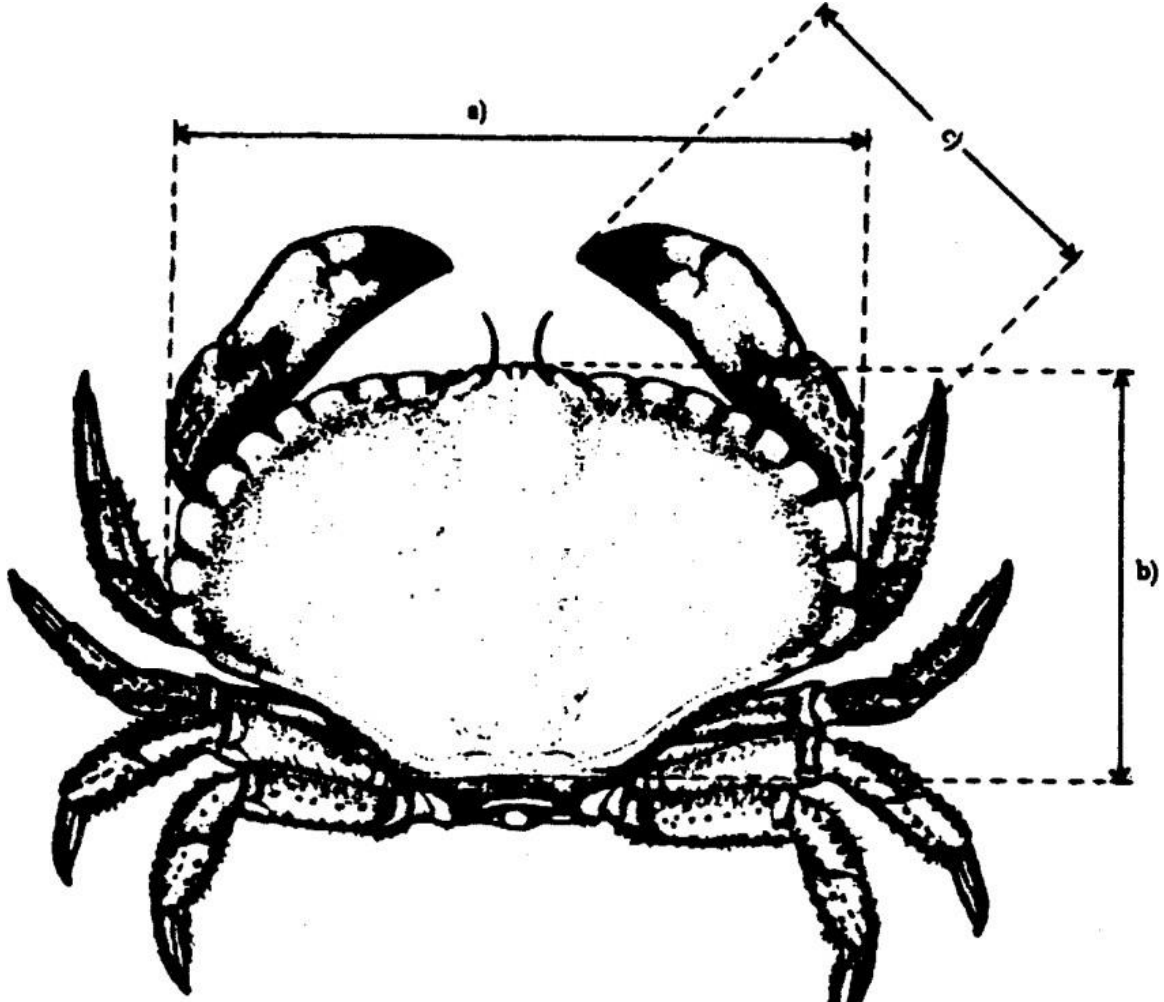


Figure 6
(*Venus verrucosa*)
Clam
(a) Maximum width of the shell

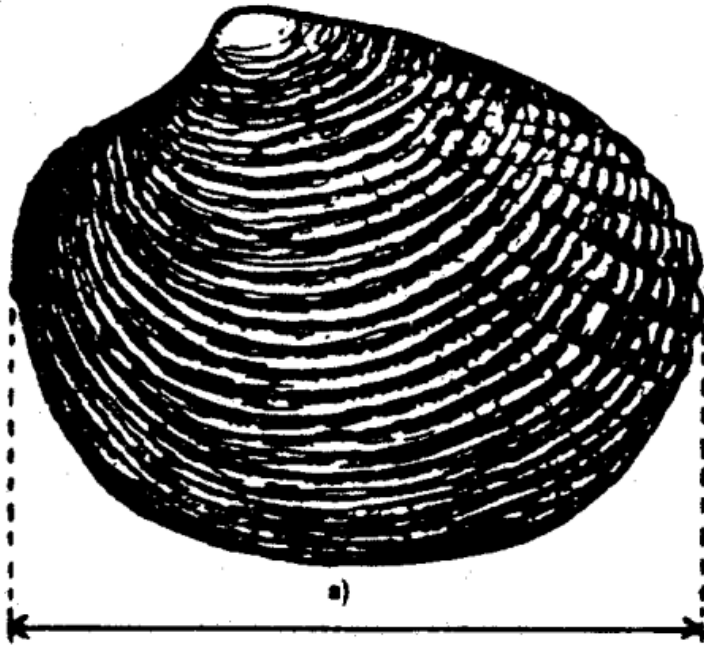


Figure 7
(*Buccinum undatum*)
Whelk
Maximum length of the shell

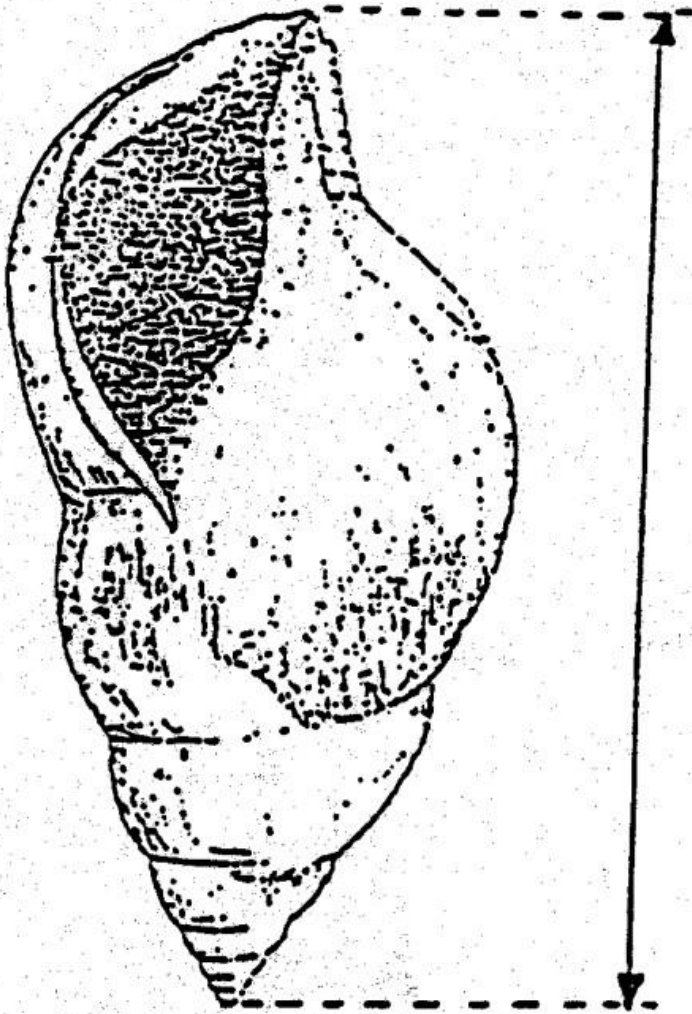


Fig 8

Queen Scallop (chlamys opercularis)

Maximum width of the shell

