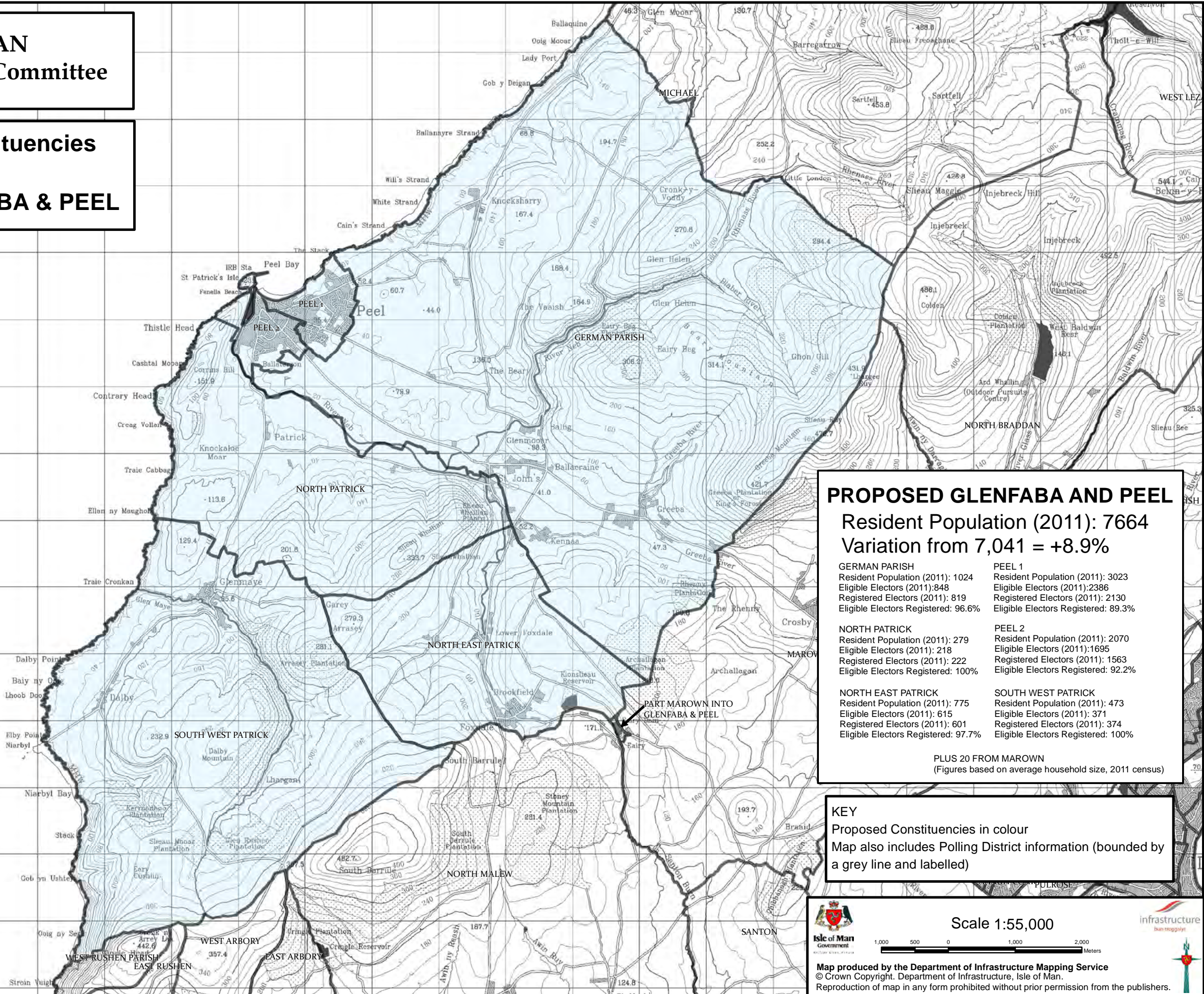


**ISLE OF MAN
Boundary Review Committee**

**Proposed Constituencies
Map No.7 GLENFABA & PEEL**



PROPOSED GLENFABA AND PEEL
 Resident Population (2011): 7664
 Variation from 7,041 = +8.9%

<p>GERMAN PARISH Resident Population (2011): 1024 Eligible Electors (2011): 848 Registered Electors (2011): 819 Eligible Electors Registered: 96.6%</p>	<p>PEEL 1 Resident Population (2011): 3023 Eligible Electors (2011): 2386 Registered Electors (2011): 2130 Eligible Electors Registered: 89.3%</p>
<p>NORTH PATRICK Resident Population (2011): 279 Eligible Electors (2011): 218 Registered Electors (2011): 222 Eligible Electors Registered: 100%</p>	<p>PEEL 2 Resident Population (2011): 2070 Eligible Electors (2011): 1695 Registered Electors (2011): 1563 Eligible Electors Registered: 92.2%</p>
<p>NORTH EAST PATRICK Resident Population (2011): 775 Eligible Electors (2011): 615 Registered Electors (2011): 601 Eligible Electors Registered: 97.7%</p>	<p>SOUTH WEST PATRICK Resident Population (2011): 473 Eligible Electors (2011): 371 Registered Electors (2011): 374 Eligible Electors Registered: 100%</p>

PLUS 20 FROM MAROWN
 (Figures based on average household size, 2011 census)

KEY
 Proposed Constituencies in colour
 Map also includes Polling District information (bounded by a grey line and labelled)

Scale 1:55,000

Isle of Man Government
 Department of Infrastructure Mapping Service
 Map produced by the Department of Infrastructure Mapping Service
 © Crown Copyright. Department of Infrastructure, Isle of Man.
 Reproduction of map in any form prohibited without prior permission from the publishers.