

# **Jurby Airfield Area of Special Scientific Interest (ASSI)**

## **Designation Documents**

Please note:

- Notification as an ASSI confers no public right of entry to any land without the permission of the landowner.
- The citations and lists of operations requiring the Department of Environment, Food and Agriculture's consent may be subject to minor editorial changes and should not be assumed to be an exact facsimile of the original legal document.

---

**Department of Environment, Food and Agriculture**

*Rheynn Chymmltaght, Bee as Eirinys*

This Slieau Whallian, Foxdale Road, St John's, Isle of Man IM4 3AS

[www.gov.im](http://www.gov.im)



**Isle of Man  
Government**

*Reillys Ellan Vannin*

---



Department of Agriculture,  
Fisheries and Forestry

### JURBY AIRFIELD AREA OF SPECIAL SCIENTIFIC INTEREST

Area: 63.04 ha

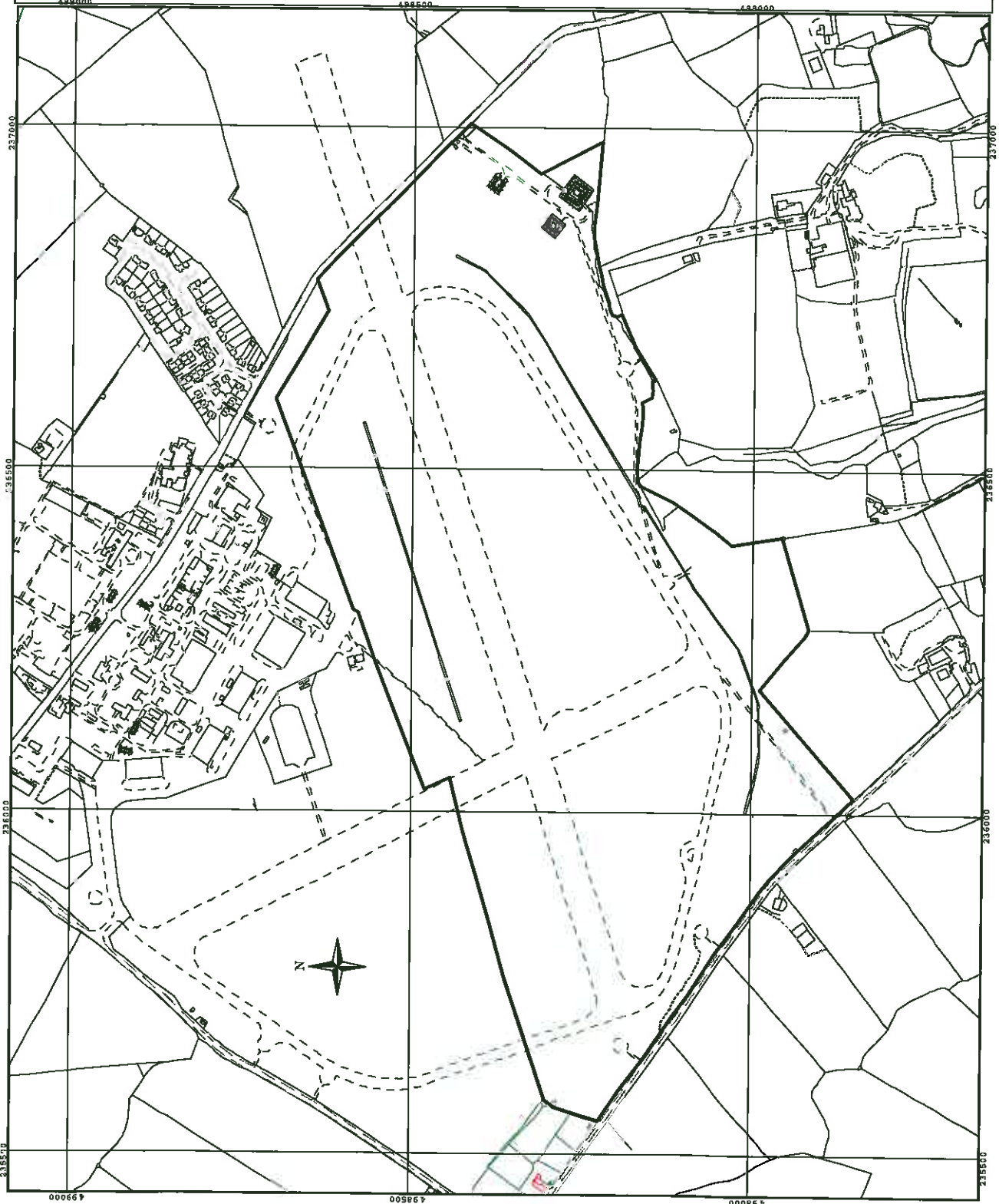
 Site Boundary

Designated: July 20th 2004  
Varied and confirmed:  
18th January 2005

The grid lines on this map form  
part of the National Grid,  
and are spaced at 500m intervals

  
100 0 100 Meters

Crown Copyright  
Department of Local Government  
and the Environment, Isle of Man.  
Unauthorised production  
infringes copyright.



## NOTIFICATION OF AN AREA OF SPECIAL SCIENTIFIC INTEREST Appendix I

**Area:** Isle of Man

**Site name:** JURBY AIRFIELD

**Parish:** Jurby

**Status :** Area of Special Scientific Interest (ASSI) notified under Section 27 of the Wildlife Act 1990.

**National Grid Reference:** SC 362983      **Area:** approximately 63.04 ha. (155.7 acres)

**Ordnance Survey Sheets:** 1:50,000 : Map 95      1:10,560 : SC 39 NE  
1:25,000 Isle of Man Public Rights of Way and Outdoor Leisure Map (North)

**Date notified:** 20<sup>th</sup> July 2004, varied and confirmed 18<sup>th</sup> January 2005

### **Purpose**

This site is designated for its semi-improved neutral grassland of the type crested dog's-tail and knapweed *Cynosurus cristatus* - *Centaurea nigra* lowland hay meadow.

### **Description:**

A large, open and flat area of species-rich, neutral grassland on sandy soil, lying in between the airfield runways. The grassland is managed as a hay meadow. The grassland is variously dominated by red fescue *Festuca rubra*, Yorkshire fog *Holcus lanatus* and sweet vernal-grass *Anthoxanthum odoratum*, with frequent crested dog's-tail *Cynosurus cristatus*, common mouse-ear *Cerastium fontanum*, common bird's-foot-trefoil *Lotus corniculatus*, field wood-rush *Luzula campestris*, bulbous buttercup *Ranunculus bulbosus*, yarrow *Achillea millefolium*, yellow rattle *Rhinanthus minor*, ribwort plantain *Plantago lanceolata*, heath wood-rush *Luzula multiflora*, common bent-grass *Agrostis capillaris* and common sorrel *Rumex acetosa*.

Floral interest includes a number of species restricted to relatively unimproved sites on free-draining neutral or calcareous soils, which, in addition to bulbous buttercup and yellow rattle, includes lady's bedstraw *Galium verum*, spring sedge *Carex caryophylla*, crested hair-grass *Koeleria macrantha*, eyebright *Euphrasia nemorosa*, kidney vetch *Anthyllis vulneraria* and ox-eye daisy *Leucanthemum vulgare*.

Other notable plants are the squirrel-tail fescue *Vulpia bromoides*, and common centaury *Centaureum erythraea*.

The site is a stronghold for breeding skylarks *Alauda arvensis*<sup>\*\*\*</sup>. Other breeding bird species include the linnet *Carduelis cannabina*<sup>\*\*</sup>, grey partridge *Perdix perdix*<sup>\*\*</sup>, corncrake *Crex crex*<sup>\*/\*\*</sup> and curlew *Numenius arquata*<sup>\*</sup>. In the winter flocks of golden plover *Pluvialis apricaria*<sup>\*</sup> and lapwing *Vanellus vanellus*<sup>\*</sup> have been recorded on the wider airfield. Visiting non-breeders include hen harrier *Circus cyaneus*<sup>\*/\*\*</sup> and, peregrine *Falco peregrinus*<sup>\*</sup>.

### **Other information:**

The location is known to have had significant prehistoric and Viking occupation. RAF Jurby survives as significant groups of buildings, perimeter defences and the runways.

Full species lists are available from the Biological Records Centre, Manx Museum, Douglas.

\* species on Schedule 1 of the Wildlife Act 1990

\*\* Red List Bird of Conservation Concern

NOTIFICATION OF AN AREA OF SPECIAL SCIENTIFIC INTEREST Appendix II

**Site Name: Jurby Airfield**

Operations likely to damage the special interest of the site

Type of operation

1. Cultivation including ploughing, rotovating, harrowing and reseeded.
2. Grazing where already damaging, the introduction of grazing and changes in grazing regime (including type of stock or intensity or seasonal pattern of grazing and cessation of grazing).
3. Stock feeding, where already damaging, the introduction of stock feeding and changes in stock feeding practice.
4. Mowing or other methods of cutting where they are already damaging, changes in mowing or cutting regime, including conversion from hay making to silage or cessation of mowing, (except within 2 m of the edge of the runways or race tracks, access track for ambulances by route agreed with DAFF).
5. Application of manure, fertilisers and lime.
6. Application of pesticides, including herbicides (weedkillers).
7. Dumping, spreading or discharge of any materials.
8. Burning, lighting of fires and changes in frequency or pattern of burning, where applicable.
9. The release into the site of any wild, feral or domestic animals \*\*, plant or seed.
10. The killing or removal of any wild animal \*\*, including pest control.
11. The destruction, displacement, removal or cutting of any plant or plant remains, including herb, dead or decaying wood, moss, lichen, fungus, leaf mould or turf.
12. The introduction of tree and /or woodland management and changes in tree and/ or woodland management.
13. Drainage (including moor-gripping, the use of mole, tile, tunnel or other artificial drains).
14. The changing of water levels and tables and water utilisation (including irrigation, storage and abstraction from existing water bodies and through boreholes).
15. Infilling of ditches, dykes, drains, ponds, pools, marshes or pits.
20. Extraction of minerals including peat, shingle, sand and gravel, topsoil, subsoil, chalk, lime, limestone pavement, shells and spoil.
21. Construction, removal or destruction of roads, tracks, walls, fences, hardstands, banks, ditches or other earthworks, or the laying, maintenance or removal of pipelines and cables, above or below ground.
22. Storage of materials.
23. Erection of permanent or temporary structures, or the undertaking of engineering works, including drilling.
24. Modification of natural or man-made features (including cave entrances), clearance of boulders, large stones, loose rock or scree and bettering, buttressing or grading rock faces and cuttings, infilling of pits, and quarries.
25. Removal of geological specimens, including rock samples, minerals and fossils.
26. Use of vehicles or craft likely to damage or disturb features of interest, (except on the runways and race tracks or by emergency vehicles whilst attending emergencies)
27. Recreational or other activities likely to damage features of interest, (except on runways and race tracks).

28. Game and waterfowl management and hunting practices, where already damaging, introduction of game or waterfowl management and changes in game or waterfowl management and hunting practices.

\*\* "animal" includes any mammal, reptile, bird, fish or invertebrate.

*Operations 16-19 excluded as not relevant to this site.*

January 18<sup>th</sup> 2005