



**Isle of Man**  
**Government**

*Reilltys Ellan Vannin*



# Passenger Survey Annual Report 2010

Economic Affairs Division  
Isle of Man Treasury

**ISLE OF MAN PASSENGER SURVEY  
ANNUAL REPORT 2010**

<b><u>CONTENTS</u></b>	<b><u>PAGE</u></b>
<b>INTRODUCTION</b>	<b>1</b>
<b>EXECUTIVE SUMMARY</b>	<b>3</b>
<b>1. Scheduled Passenger Departures</b>	<b>5</b>
1.1 Scheduled Passenger Departures by Mode of Travel 1985-2010	6
1.2 Scheduled Passenger Departures by Quarter 1985-2010	6
1.3 Scheduled Air Passenger Departures by Quarter 1985-2010	7
1.4 Scheduled Sea Passenger Departures by Quarter 1985-2010	7
1.5 (a) Scheduled Departures by Residents and Visitors 1985-2010	8
1.5 (b) Scheduled Departures by Residents and Visitors (% of total) 1985-2010	8
1.6 (a) Air Departures by Residents and Visitors 1985-2010	9
1.6 (b) Air Departures by Residents and Visitors (% of total) 1985-2010	9
1.7 (a) Sea Departures by Residents and Visitors 1985-2010	10
1.7 (b) Sea Departures by Residents and Visitors (% of total) 1985-2010	10
<b>2. Visitors</b>	<b>11</b>
2.1 Number of Visits by Mode of Travel 1985-2010	12
2.2 Number of Visits by Quarter 1985-2010	12
2.3 Number of Visits by Air by Quarter 1985-2010	13
2.4 Number of Visits by Sea by Quarter 1985-2010	13
2.5 (a) Number of Visits by Type of Visitor 1985-2010	14
2.5 (b) Visits by Type of Visitor (% of total visits) 1985-2010	14
<i>Chart 2.1 Visitors by Type 1985 to 2010</i>	15
2.6 (a) Number of Visits by Air by Type of Visitor 1985-2010	16
2.6 (b) Visits by Air by Type of Visitor (% of total visits) 1985-2010	16
2.7 (a) Number of Visits by Sea by Type of Visitor 1985-2010	17
2.7 (b) Visits by Sea by Type of Visitor (% of total visits) 1985-2010	17
2.8 (a) Total Visitor Expenditure by Type of Expenditure 2010	18

2.8 (b)	Average Expenditure by Type of Expenditure 2010	18
<i>Chart 2.2</i>	<i>Total Visitor Expenditure at Constant (2010) Prices 1985 to 2010</i>	19
2.9	Number of Bed Nights 2010	20
2.10 (a)	Area of Residence (All Visitors) (%) 2010	20
2.10 (b)	Area of Residence (Visitors by Air) (%) 2010	21
2.10 (c)	Area of Residence (Visitors by Sea) (%) 2010	21
<b>3.</b>	<b>Isle of Man Residents</b>	<b>23</b>
3.1	Number of Trips by Residents by Type 2010	24
3.2	Number of Nights Off Island by Type 2010	24
3.3 (a)	Main Destination of Residents (All Residents) (%) 2010	25
3.3 (b)	Main Destination of Residents (Air) (%) 2010	25
3.3 (c)	Main Destination of Residents (Sea) (%) 2010	26
<b>Appendices</b>		<b>27</b>
1.	Sample Size by Category of Passenger and Quarter	28
2.	Notes on Survey Methodology	29
3.	Passenger Survey Questionnaire	30
<b>Additional Publications and Further Information</b>		<b>35</b>

## INTRODUCTION

This is the twenty-sixth annual report of the Isle of Man Passenger Survey, containing details of various aspects of passenger traffic to and from the Island in 2010.

The survey has been running continuously since 1985 and provides estimates of the structure of passenger traffic, the numbers and spending of each type of visitor, and trends in these variables over time.

Since its inception the survey has been conducted by staff of the Economic Affairs Division of the Isle of Man Government Treasury, who interview departing passengers at Douglas Harbour and Ronaldsway Airport. Responses from these interviews are recorded electronically and analysed within the Division, with the results released in full report form on an annual basis.

In the Passenger Survey, interviewees are classified under the following definitions of passenger type:-

<b>Passenger Type</b>	<b>Definition</b>
Isle of Man Residents (RES)	Isle of Man residents leaving the Island.
Period Visitors in Paid Accommodation (PVPA)	Non-business visitors who stayed in paid accommodation whilst in the Island.
Period Visitors Visiting Friends and Relatives (VFR)	Non-business visitors who stayed with friends or relatives whilst in the Island.
Business Visitors (BV)	Visitors who were in the Island for business purposes.
Day Visitors (DV)	Non-business visitors who did not stay overnight.

The Report begins with an Executive Summary, which outlines the most significant results for 2010. The results are then presented in detail by a series of tables and graphs. Finally, the technical aspects of the survey are explained, with a section on sample size, methodology and a copy of the survey questionnaire.

Throughout the Report, “quarterly” figures are presented in which “Q1” includes figures for January to April and “Q2” consists of those for May and June. This is to ensure that quarterly comparisons are not distorted by the timing of the Easter break.

This Report is intended to meet the general information requirements of regular users of the Passenger Survey, but additional statistics may be made available on request. Further comments and enquiries should be addressed to:

Peter Hannay,  
Senior Research Officer,  
Economic Affairs Division,  
Isle of Man Treasury,  
Illiam Dhone House,  
2 Circular Road,  
Douglas,  
Isle of Man.  
IM1 1PQ

Tel.: (01624) 685750  
Fax: (01624) 685747  
email: Peter.Hannay@gov.im

May, 2011

## **EXECUTIVE SUMMARY**

### **The Structure of Passenger Traffic**

Total scheduled passenger departures fell by 2% over the year, from 649,600 in 2009 to 638,100 in 2010. The number of passengers travelling by air fell by 17,100, and the number travelling by sea rose by 5,600, giving the net fall of 11,500 over the year.

Passenger survey results suggest that the fall in passenger traffic was due to a reduction in the number of trips off-Island by residents, which were down from 362,500 in 2009 to 350,300 in 2010.

The number of visitors during 2010 is estimated at 287,800, a slight increase on the comparable figure for 2009.

### **Area of Residence/Destination**

As always, the largest number of visitors came from the North West of England (33%). Other regions that provide a substantial share of the visitor total include South East England (16%) and the Midlands (12%). Around 7% of all visitors came from outside the UK/Eire/Channel Islands.

The main destination for 33% of residents travelling off-Island was the North West of England. A further 24% were travelling to a destination outside the UK/Eire/Channel Islands.

### **Length of stay**

The average length of stay of visitors (excluding day visitors) was an estimated 5.6 nights in 2010, whilst the average for residents travelling off-Island (again excluding those returning the same day) was 7.4 nights.

### **Expenditure**

Expenditure on trips to the Island made by visitors in 2010 was over £90 million. On average, visitors spent around £314 per visit.

***1. Scheduled Passenger Departures***

**Table 1.1 Scheduled Passenger Departures by Mode of Travel 1985 - 2010**

	<b>1985</b>	<b>1986</b>	<b>1987</b>	<b>1988</b>	<b>1989</b>	<b>1990</b>	<b>1991</b>	<b>1992</b>	<b>1993</b>
<i>Air</i>	157,700	171,600	197,500	241,300	251,500	266,400	233,800	229,000	241,600
<i>Sea</i>	305,000	278,000	266,100	235,800	235,500	235,900	233,400	220,000	227,000
<b>Total</b>	<b>462,700</b>	<b>449,600</b>	<b>463,600</b>	<b>477,100</b>	<b>487,000</b>	<b>502,200</b>	<b>467,200</b>	<b>449,000</b>	<b>468,600</b>

	<b>1994</b>	<b>1995</b>	<b>1996</b>	<b>1997</b>	<b>1998</b>	<b>1999</b>	<b>2000</b>	<b>2001</b>	<b>2002</b>
<i>Air</i>	254,700	263,100	299,300	334,900	349,000	333,200	350,600	346,500	360,600
<i>Sea</i>	236,400	235,200	219,200	231,400	240,300	271,900	290,000	269,900	312,700
<b>Total</b>	<b>491,100</b>	<b>498,400</b>	<b>518,500</b>	<b>566,200</b>	<b>589,300</b>	<b>605,000</b>	<b>640,600</b>	<b>616,500</b>	<b>673,300</b>

	<b>2003</b>	<b>2004</b>	<b>2005</b>	<b>2006</b>	<b>2007</b>	<b>2008</b>	<b>2009</b>	<b>2010</b>
<i>Air</i>	369,400	381,400	398,000	390,100	375,800	377,400	353,700	336,600
<i>Sea</i>	314,100	303,100	283,300	281,100	312,200	297,400	295,900	301,500
<b>Total</b>	<b>683,600</b>	<b>684,500</b>	<b>681,300</b>	<b>671,300</b>	<b>688,000</b>	<b>674,800</b>	<b>649,600</b>	<b>638,100</b>

**Table 1.2 Scheduled Passenger Departures by Quarter 1985 - 2010**

	<b>1985</b>	<b>1986</b>	<b>1987</b>	<b>1988</b>	<b>1989</b>	<b>1990</b>	<b>1991</b>	<b>1992</b>	<b>1993</b>
<i>Q1</i>	68,800	65,800	76,000	85,300	98,700	107,000	99,600	99,400	104,400
<i>Q2</i>	119,900	111,700	110,400	107,200	110,800	116,500	106,800	102,800	106,400
<i>Q3</i>	219,700	214,100	211,700	211,300	200,000	196,600	181,700	168,900	174,600
<i>Q4</i>	54,400	58,000	65,500	73,300	77,600	82,200	79,100	77,900	83,300
<b>Total</b>	<b>462,700</b>	<b>449,600</b>	<b>463,600</b>	<b>477,100</b>	<b>487,000</b>	<b>502,200</b>	<b>467,200</b>	<b>449,000</b>	<b>468,600</b>

	<b>1994</b>	<b>1995</b>	<b>1996</b>	<b>1997</b>	<b>1998</b>	<b>1999</b>	<b>2000</b>	<b>2001</b>	<b>2002</b>
<i>Q1</i>	108,500	108,600	112,600	127,300	142,000	148,200	157,900	158,700	169,000
<i>Q2</i>	107,500	114,100	116,400	122,400	131,200	128,000	139,400	113,500	145,400
<i>Q3</i>	188,400	186,500	189,100	206,300	203,500	211,000	217,400	214,300	224,100
<i>Q4</i>	86,600	89,200	100,500	110,200	112,500	117,900	126,000	130,000	134,900
<b>Total</b>	<b>491,100</b>	<b>498,400</b>	<b>518,500</b>	<b>566,200</b>	<b>589,300</b>	<b>605,000</b>	<b>640,600</b>	<b>616,500</b>	<b>673,300</b>

	<b>2003</b>	<b>2004</b>	<b>2005</b>	<b>2006</b>	<b>2007</b>	<b>2008</b>	<b>2009</b>	<b>2010</b>
<i>Q1</i>	174,000	176,300	175,700	174,800	172,600	178,100	164,800	163,000
<i>Q2</i>	142,400	138,800	139,100	134,900	148,800	139,400	134,500	132,100
<i>Q3</i>	226,800	228,600	226,700	221,100	223,700	223,000	217,700	216,500
<i>Q4</i>	140,400	140,800	139,800	140,500	143,000	134,300	132,600	126,500
<b>Total</b>	<b>683,600</b>	<b>684,500</b>	<b>681,300</b>	<b>671,300</b>	<b>688,000</b>	<b>674,800</b>	<b>649,600</b>	<b>638,100</b>



**Table 1.3 Scheduled Air Passenger Departures by Quarter 1985 - 2010**

	<b>1985</b>	<b>1986</b>	<b>1987</b>	<b>1988</b>	<b>1989</b>	<b>1990</b>	<b>1991</b>	<b>1992</b>	<b>1993</b>
<i>Q1</i>	35,300	41,800	46,500	62,400	67,400	74,400	62,300	63,500	63,600
<i>Q2</i>	32,800	33,300	39,000	50,700	50,100	53,500	46,800	44,400	46,500
<i>Q3</i>	56,400	57,000	67,200	76,900	78,400	82,600	73,300	70,100	75,200
<i>Q4</i>	33,200	39,500	44,800	51,300	55,600	55,800	51,500	50,900	56,400
<b>Total</b>	157,700	171,600	197,500	241,300	251,500	266,400	233,800	229,000	241,600

	<b>1994</b>	<b>1995</b>	<b>1996</b>	<b>1997</b>	<b>1998</b>	<b>1999</b>	<b>2000</b>	<b>2001</b>	<b>2002</b>
<i>Q1</i>	71,600	72,600	78,400	92,200	99,900	98,300	103,300	103,600	108,100
<i>Q2</i>	49,200	49,300	57,100	63,200	66,600	56,700	62,400	2,000	65,600
<i>Q3</i>	75,100	78,100	90,300	98,600	101,400	95,800	97,500	98,300	99,000
<i>Q4</i>	58,800	63,100	73,400	80,800	81,100	82,400	87,400	85,300	87,700
<b>Total</b>	254,700	263,100	299,300	334,800	349,000	333,200	350,600	289,200	360,600

	<b>2003</b>	<b>2004</b>	<b>2005</b>	<b>2006</b>	<b>2007</b>	<b>2008</b>	<b>2009</b>	<b>2010</b>
<i>Q1</i>	107,800	111,500	119,400	116,900	111,100	120,800	105,200	98,400
<i>Q2</i>	65,600	63,300	72,900	69,900	69,300	68,600	63,600	59,300
<i>Q3</i>	103,100	109,300	108,600	107,300	99,400	99,600	96,600	95,300
<i>Q4</i>	92,900	97,300	97,100	96,000	96,000	88,400	88,200	83,600
<b>Total</b>	369,400	381,400	398,000	390,100	375,800	377,400	353,700	336,600

**Table 1.4 Scheduled Sea Passenger Departures by Quarter 1985 - 2010**

	<b>1985</b>	<b>1986</b>	<b>1987</b>	<b>1988</b>	<b>1989</b>	<b>1990</b>	<b>1991</b>	<b>1992</b>	<b>1993</b>
<i>Q1</i>	33,500	24,000	29,500	22,900	31,300	32,600	37,400	35,900	40,800
<i>Q2</i>	87,100	78,400	71,400	56,500	60,600	62,900	59,900	58,300	59,900
<i>Q3</i>	163,300	157,100	144,500	134,400	121,600	113,900	108,400	98,800	99,400
<i>Q4</i>	21,100	18,500	20,700	22,000	22,000	26,400	27,600	27,000	26,900
<b>Total</b>	305,000	278,000	266,100	235,800	235,500	235,900	233,400	220,000	227,000

	<b>1994</b>	<b>1995</b>	<b>1996</b>	<b>1997</b>	<b>1998</b>	<b>1999</b>	<b>2000</b>	<b>2001</b>	<b>2002</b>
<i>Q1</i>	36,900	36,000	34,200	35,100	42,100	49,900	54,500	55,100	60,800
<i>Q2</i>	58,300	64,800	59,200	59,200	64,600	71,300	77,000	54,200	79,700
<i>Q3</i>	113,300	108,400	98,700	107,700	102,100	115,200	119,900	116,000	125,000
<i>Q4</i>	27,900	26,100	27,100	29,300	31,400	35,500	38,600	44,700	47,100
<b>Total</b>	236,400	235,200	219,200	231,400	240,300	271,900	290,000	269,900	312,700

	<b>2003</b>	<b>2004</b>	<b>2005</b>	<b>2006</b>	<b>2007</b>	<b>2008</b>	<b>2009</b>	<b>2010</b>
<i>Q1</i>	66,200	64,800	56,300	57,900	61,500	57,400	59,600	64,600
<i>Q2</i>	76,800	75,500	66,200	64,900	79,500	70,700	70,900	72,800
<i>Q3</i>	123,600	119,300	118,100	113,800	124,300	123,300	121,100	121,200
<i>Q4</i>	47,500	43,500	42,700	44,500	46,900	45,900	44,400	42,900
<b>Total</b>	314,100	303,100	283,300	281,100	312,200	297,400	295,900	301,500

**Table 1.5 (a) Scheduled Departures by IOM Residents and Visitors 1985 - 2010**

	<b>1985</b>	<b>1986</b>	<b>1987</b>	<b>1988</b>	<b>1989</b>	<b>1990</b>	<b>1991</b>	<b>1992</b>	<b>1993</b>
<i>Resident</i>	114,500	123,300	146,200	175,900	176,000	183,100	192,400	211,600	201,200
<i>Visitor</i>	348,200	326,300	317,400	301,200	311,000	319,100	274,800	237,400	267,400
<i>Total</i>	462,700	449,600	463,600	477,100	487,000	502,200	467,200	449,000	468,600

	<b>1994</b>	<b>1995</b>	<b>1996</b>	<b>1997</b>	<b>1998</b>	<b>1999</b>	<b>2000</b>	<b>2001</b>	<b>2002</b>
<i>Resident</i>	204,200	216,000	219,400	228,200	244,800	263,400	301,200	329,400	346,500
<i>Visitor</i>	286,900	282,300	299,100	338,000	344,500	341,600	339,400	287,100	326,800
<i>Total</i>	491,100	498,400	518,500	566,200	589,300	605,000	640,600	616,500	673,300

	<b>2003</b>	<b>2004</b>	<b>2005</b>	<b>2006</b>	<b>2007</b>	<b>2008</b>	<b>2009</b>	<b>2010</b>
<i>Resident</i>	346,100	343,600	360,300	364,700	363,900	399,600	362,500	350,300
<i>Visitor</i>	337,400	340,900	321,000	306,600	324,100	275,200	287,100	287,800
<i>Total</i>	683,600	684,500	681,300	671,300	688,000	674,800	649,600	638,100

**Table 1.5 (b) Scheduled Departures by IOM Residents and Visitors (% of total) 1985 - 2010**

	<b>1985</b>	<b>1986</b>	<b>1987</b>	<b>1988</b>	<b>1989</b>	<b>1990</b>	<b>1991</b>	<b>1992</b>	<b>1993</b>
<i>Resident</i>	25	27	32	37	36	36	41	47	43
<i>Visitor</i>	75	73	68	63	64	64	59	53	57
<i>Total</i>	100	100	100	100	100	100	100	100	100

	<b>1994</b>	<b>1995</b>	<b>1996</b>	<b>1997</b>	<b>1998</b>	<b>1999</b>	<b>2000</b>	<b>2001</b>	<b>2002</b>
<i>Resident</i>	42	43	42	40	42	44	47	53	51
<i>Visitor</i>	58	57	58	60	58	56	53	47	49
<i>Total</i>	100	100	100	100	100	100	100	100	100

	<b>2003</b>	<b>2004</b>	<b>2005</b>	<b>2006</b>	<b>2007</b>	<b>2008</b>	<b>2009</b>	<b>2010</b>
<i>Resident</i>	51	50	53	54	53	59	56	55
<i>Visitor</i>	49	50	47	46	47	41	44	45
<i>Total</i>	100	100	100	100	100	100	100	100

**Table 1.6 (a) Scheduled Air Departures by IOM Residents and Visitors 1985 - 2010**

	1985	1986	1987	1988	1989	1990	1991	1992	1993
<i>Resident</i>	72,700	75,800	92,900	116,700	115,500	116,200	111,500	114,500	116,300
<i>Visitor</i>	85,000	95,700	104,600	124,600	136,100	150,100	122,400	114,600	125,300
<i>Total</i>	157,700	171,600	197,500	241,300	251,500	266,400	233,800	229,000	241,600

	1994	1995	1996	1997	1998	1999	2000	2001	2002
<i>Resident</i>	121,600	126,300	150,100	157,900	173,500	179,500	193,400	205,400	210,200
<i>Visitor</i>	133,100	136,800	149,200	176,900	175,500	153,700	157,200	141,100	150,400
<i>Total</i>	254,700	263,100	299,300	334,900	349,000	333,200	350,600	346,500	360,600

	2003	2004	2005	2006	2007	2008	2009	2010
<i>Resident</i>	201,900	214,300	236,400	238,000	226,900	248,700	221,000	209,900
<i>Visitor</i>	167,600	167,100	161,600	152,200	148,800	128,700	132,700	126,700
<i>Total</i>	369,400	381,400	398,000	390,100	375,800	377,400	353,700	336,600

**Table 1.6 (b) Scheduled Air Departures by IOM Residents and Visitors (% of total) 1985 - 2010**

	1985	1986	1987	1988	1989	1990	1991	1992	1993
<i>Resident</i>	46	44	47	48	46	44	48	50	48
<i>Visitor</i>	54	56	53	52	54	56	52	50	52
<i>Total</i>	100	100	100	100	100	100	100	100	100

	1994	1995	1996	1997	1998	1999	2000	2001	2002
<i>Resident</i>	48	48	50	47	50	54	55	59	58
<i>Visitor</i>	52	52	50	53	50	46	45	41	42
<i>Total</i>	100	100	100	100	100	100	100	100	100

	2003	2004	2005	2006	2007	2008	2009	2010
<i>Resident</i>	55	56	59	61	60	66	62	62
<i>Visitor</i>	45	44	41	39	40	34	38	38
<i>Total</i>	100	100	100	100	100	100	100	100

**Table 1.7 (a) Scheduled Sea Departures by IOM Residents and Visitors 1985 - 2010**

	1985	1986	1987	1988	1989	1990	1991	1992	1993
<i>Resident</i>	41,800	47,500	53,300	59,100	60,600	66,800	80,900	97,200	85,000
<i>Visitor</i>	263,200	230,500	212,800	176,600	174,900	169,000	152,500	122,800	142,100
<i>Total</i>	305,000	278,000	266,100	235,800	235,500	235,900	233,400	220,000	227,000

	1994	1995	1996	1997	1998	1999	2000	2001	2002
<i>Resident</i>	82,600	89,700	69,300	70,300	71,300	83,900	107,800	124,000	136,300
<i>Visitor</i>	153,800	145,600	149,900	161,100	169,000	188,000	182,200	145,900	176,400
<i>Total</i>	236,400	235,200	219,200	231,400	240,300	271,900	290,000	269,900	312,700

	2003	2004	2005	2006	2007	2008	2009	2010
<i>Resident</i>	144,300	129,300	123,900	126,700	136,900	150,900	141,400	140,400
<i>Visitor</i>	169,900	173,800	159,400	154,400	175,300	146,500	154,500	161,100
<i>Total</i>	314,100	303,100	283,300	281,100	312,200	297,400	295,900	301,500

**Table 1.7 (b) Scheduled Sea Departures by IOM Residents and Visitors (% of total) 1985 - 2010**

	1985	1986	1987	1988	1989	1990	1991	1992	1993
<i>Resident</i>	14	17	20	25	26	28	35	44	37
<i>Visitor</i>	86	83	80	75	74	72	65	56	63
<i>Total</i>	100	100	100	100	100	100	100	100	100

	1994	1995	1996	1997	1998	1999	2000	2001	2002
<i>Resident</i>	35	38	32	30	30	31	37	46	44
<i>Visitor</i>	65	62	68	70	70	69	63	54	56
<i>Total</i>	100	100	100	100	100	100	100	100	100

	2003	2004	2005	2006	2007	2008	2009	2010
<i>Resident</i>	46	43	44	45	44	51	48	47
<i>Visitor</i>	54	57	56	55	56	49	52	53
<i>Total</i>	100	100	100	100	100	100	100	100

## **2. *Visitors***

**Table 2.1 Number of Visits by Mode of Travel 1985 - 2010**

	<b>1985</b>	<b>1986</b>	<b>1987</b>	<b>1988</b>	<b>1989</b>	<b>1990</b>	<b>1991</b>	<b>1992</b>	<b>1993</b>
<i>Air</i>	85,000	95,700	104,600	124,600	136,100	150,100	122,400	114,600	125,300
<i>Sea</i>	263,200	230,500	212,800	176,600	174,900	169,000	152,500	122,800	142,100
<b>Total</b>	348,200	326,300	317,400	301,200	311,000	319,100	274,800	237,400	267,400

	<b>1994</b>	<b>1995</b>	<b>1996</b>	<b>1997</b>	<b>1998</b>	<b>1999</b>	<b>2000</b>	<b>2001</b>	<b>2002</b>
<i>Air</i>	133,100	136,800	149,200	176,900	175,500	153,700	157,200	141,100	150,400
<i>Sea</i>	153,800	145,600	149,900	161,100	169,000	188,000	182,200	145,900	176,400
<b>Total</b>	286,900	282,300	299,100	338,000	344,500	341,600	339,400	287,100	326,800

	<b>2003</b>	<b>2004</b>	<b>2005</b>	<b>2006</b>	<b>2007</b>	<b>2008</b>	<b>2009</b>	<b>2010</b>
<i>Air</i>	167,600	167,100	161,600	152,200	148,800	128,700	132,700	126,700
<i>Sea</i>	169,900	173,800	159,400	154,400	175,300	146,500	154,500	161,100
<b>Total</b>	337,400	340,900	321,000	306,600	324,100	275,200	287,100	287,800

**Table 2.2 Number of Visits by Quarter 1985 - 2010**

	<b>1985</b>	<b>1986</b>	<b>1987</b>	<b>1988</b>	<b>1989</b>	<b>1990</b>	<b>1991</b>	<b>1992</b>	<b>1993</b>
<i>Q1</i>	37,100	32,300	37,300	40,300	47,200	54,000	46,100	44,200	45,900
<i>Q2</i>	98,200	87,000	81,400	67,600	73,400	73,900	68,100	63,600	71,600
<i>Q3</i>	188,200	181,600	168,700	159,300	151,500	151,400	130,600	102,400	116,600
<i>Q4</i>	24,800	25,400	30,100	34,000	38,900	39,800	30,100	27,200	33,300
<b>Total</b>	348,200	326,300	317,400	301,200	311,000	319,100	274,800	237,400	267,400

	<b>1994</b>	<b>1995</b>	<b>1996</b>	<b>1997</b>	<b>1998</b>	<b>1999</b>	<b>2000</b>	<b>2001</b>	<b>2002</b>
<i>Q1</i>	53,800	49,400	56,000	63,700	74,500	72,500	73,800	58,100	61,900
<i>Q2</i>	71,700	74,700	77,100	79,100	86,900	84,100	90,800	59,300	84,700
<i>Q3</i>	124,900	122,800	121,900	142,700	133,100	135,000	123,500	120,200	124,600
<i>Q4</i>	36,500	35,500	44,200	52,400	50,000	50,000	51,400	49,500	55,500
<b>Total</b>	286,900	282,300	299,100	338,000	344,500	341,600	339,400	287,100	326,800

	<b>2003</b>	<b>2004</b>	<b>2005</b>	<b>2006</b>	<b>2007</b>	<b>2008</b>	<b>2009</b>	<b>2010</b>
<i>Q1</i>	70,300	76,800	72,900	65,000	69,700	59,400	64,700	67,700
<i>Q2</i>	86,900	79,300	77,700	73,800	90,900	66,700	76,800	68,000
<i>Q3</i>	122,800	128,100	120,300	117,400	116,500	105,900	105,300	109,000
<i>Q4</i>	57,400	56,700	50,000	50,500	46,900	43,200	40,300	43,000
<b>Total</b>	337,400	340,900	321,000	306,600	324,100	275,200	287,100	287,800

**Table 2.3 Number of Visits by Air by Quarter 1985 - 2010**

	<b>1985</b>	<b>1986</b>	<b>1987</b>	<b>1988</b>	<b>1989</b>	<b>1990</b>	<b>1991</b>	<b>1992</b>	<b>1993</b>
<i>Q1</i>	15,800	18,300	20,200	27,300	31,200	37,600	30,800	29,700	27,700
<i>Q2</i>	19,500	18,400	22,800	25,100	28,800	30,200	28,000	24,800	27,200
<i>Q3</i>	36,700	40,800	40,800	47,800	48,400	54,900	44,500	38,800	47,400
<i>Q4</i>	12,900	18,200	20,700	24,400	27,600	27,500	19,100	21,200	23,000
<i>Total</i>	85,000	95,700	104,600	124,600	136,100	150,100	122,400	114,600	125,300
	<b>1994</b>	<b>1995</b>	<b>1996</b>	<b>1997</b>	<b>1998</b>	<b>1999</b>	<b>2000</b>	<b>2001</b>	<b>2002</b>
<i>Q1</i>	33,500	35,100	38,100	42,700	48,800	42,400	48,200	37,900	41,200
<i>Q2</i>	28,400	27,800	31,000	38,000	37,500	27,900	34,100	25,200	29,000
<i>Q3</i>	46,300	48,400	49,400	57,800	56,400	50,900	43,300	48,400	47,700
<i>Q4</i>	24,900	25,400	30,700	38,400	32,800	32,500	31,600	29,700	32,600
<i>Total</i>	133,100	136,800	149,200	176,900	175,500	153,700	157,200	141,100	150,400
	<b>2003</b>	<b>2004</b>	<b>2005</b>	<b>2006</b>	<b>2007</b>	<b>2008</b>	<b>2009</b>	<b>2010</b>	
<i>Q1</i>	45,200	43,800	46,800	42,500	43,700	35,200	39,600	39,500	
<i>Q2</i>	37,900	29,800	32,600	25,800	35,700	28,000	29,200	20,500	
<i>Q3</i>	49,400	54,300	49,500	49,200	42,300	36,800	37,500	38,800	
<i>Q4</i>	35,000	39,100	32,600	34,700	27,200	28,700	26,300	27,900	
<i>Total</i>	167,600	167,100	161,600	152,200	148,800	128,700	132,700	126,700	

**Table 2.4 Number of Visits by Sea by Quarter 1985 - 2010**

	<b>1985</b>	<b>1986</b>	<b>1987</b>	<b>1988</b>	<b>1989</b>	<b>1990</b>	<b>1991</b>	<b>1992</b>	<b>1993</b>
<i>Q1</i>	21,300	14,000	17,100	13,000	16,000	16,400	15,200	14,400	18,300
<i>Q2</i>	78,700	68,600	58,600	42,600	44,600	43,700	40,100	38,800	44,400
<i>Q3</i>	151,400	140,800	127,800	111,500	103,100	96,600	86,100	63,700	69,200
<i>Q4</i>	11,900	7,200	9,400	9,600	11,300	12,400	11,100	6,000	10,200
<i>Total</i>	263,200	230,500	212,800	176,600	174,900	169,000	152,500	122,800	142,100
	<b>1994</b>	<b>1995</b>	<b>1996</b>	<b>1997</b>	<b>1998</b>	<b>1999</b>	<b>2000</b>	<b>2001</b>	<b>2002</b>
<i>Q1</i>	20,300	14,300	17,900	21,000	25,700	30,100	25,600	20,200	20,700
<i>Q2</i>	43,300	46,900	46,100	41,200	49,400	56,200	56,700	34,100	55,700
<i>Q3</i>	78,600	74,400	72,500	85,000	76,700	84,100	80,200	71,900	77,000
<i>Q4</i>	11,600	10,000	13,500	14,000	17,200	17,500	19,800	19,800	22,900
<i>Total</i>	153,800	145,600	149,900	161,100	169,000	188,000	182,200	145,900	176,400
	<b>2003</b>	<b>2004</b>	<b>2005</b>	<b>2006</b>	<b>2007</b>	<b>2008</b>	<b>2009</b>	<b>2010</b>	
<i>Q1</i>	25,100	33,000	26,100	22,500	26,000	24,200	25,100	28,300	
<i>Q2</i>	48,900	49,500	45,100	47,900	55,200	38,800	47,600	47,500	
<i>Q3</i>	73,500	73,800	70,800	68,200	74,200	69,100	67,800	70,200	
<i>Q4</i>	22,400	17,600	17,400	15,800	19,800	14,500	14,000	15,100	
<i>Total</i>	169,900	173,800	159,400	154,400	175,300	146,500	154,500	161,100	

**Table 2.5 (a) Number of Visits by Type of Visitor 1985 - 2010**

	<b>1985</b>	<b>1986</b>	<b>1987</b>	<b>1988</b>	<b>1989</b>	<b>1990</b>	<b>1991</b>	<b>1992</b>	<b>1993</b>
<i>PVPA</i>	243,300	205,900	186,000	157,700	145,200	160,000	127,100	101,000	127,800
<i>VFR</i>	54,300	54,000	59,200	61,600	57,100	65,500	79,700	77,200	77,000
<i>BV</i>	34,100	47,000	51,900	63,300	87,200	77,100	56,500	49,000	52,200
<i>DV</i>	16,500	19,400	20,300	18,500	21,500	16,500	11,500	10,200	10,300
<i>Total</i>	348,200	326,300	317,400	301,200	311,000	319,100	274,800	237,400	267,400

	<b>1994</b>	<b>1995</b>	<b>1996</b>	<b>1997</b>	<b>1998</b>	<b>1999</b>	<b>2000</b>	<b>2001</b>	<b>2002</b>
<i>PVPA</i>	134,000	134,500	140,800	161,100	163,100	157,300	152,800	95,900	114,000
<i>VFR</i>	86,600	80,700	76,700	84,200	94,400	102,200	96,900	105,300	117,200
<i>BV</i>	54,000	56,600	71,500	81,000	76,800	74,600	79,800	76,300	87,500
<i>DV</i>	12,300	10,500	10,200	11,700	10,200	7,500	9,900	9,500	8,100
<i>Total</i>	286,900	282,300	299,100	338,000	344,500	341,600	339,400	287,100	326,800

	<b>2003</b>	<b>2004</b>	<b>2005</b>	<b>2006</b>	<b>2007</b>	<b>2008</b>	<b>2009</b>	<b>2010</b>
<i>PVPA</i>	114,200	120,300	115,100	109,800	125,900	96,900	102,600	103,000
<i>VFR</i>	127,800	120,700	110,600	109,300	122,000	103,800	102,600	109,400
<i>BV</i>	88,400	92,700	88,700	82,300	72,900	72,700	78,500	70,400
<i>DV</i>	7,000	7,300	6,600	5,200	3,400	1,800	3,300	5,200
<i>Total</i>	337,400	340,900	321,000	306,600	324,100	275,200	287,100	288,000

**Table 2.5 (b) Visits by Type of Visitor (% of total visits) 1985 - 2010**

	<b>1985</b>	<b>1986</b>	<b>1987</b>	<b>1988</b>	<b>1989</b>	<b>1990</b>	<b>1991</b>	<b>1992</b>	<b>1993</b>
<i>PVPA</i>	70	63	59	52	47	50	46	43	48
<i>VFR</i>	16	17	19	20	18	21	29	33	29
<i>BV</i>	10	14	16	21	28	24	21	21	20
<i>DV</i>	5	6	6	6	7	5	4	4	4
<i>Total</i>	100	100	100	100	100	100	100	100	100

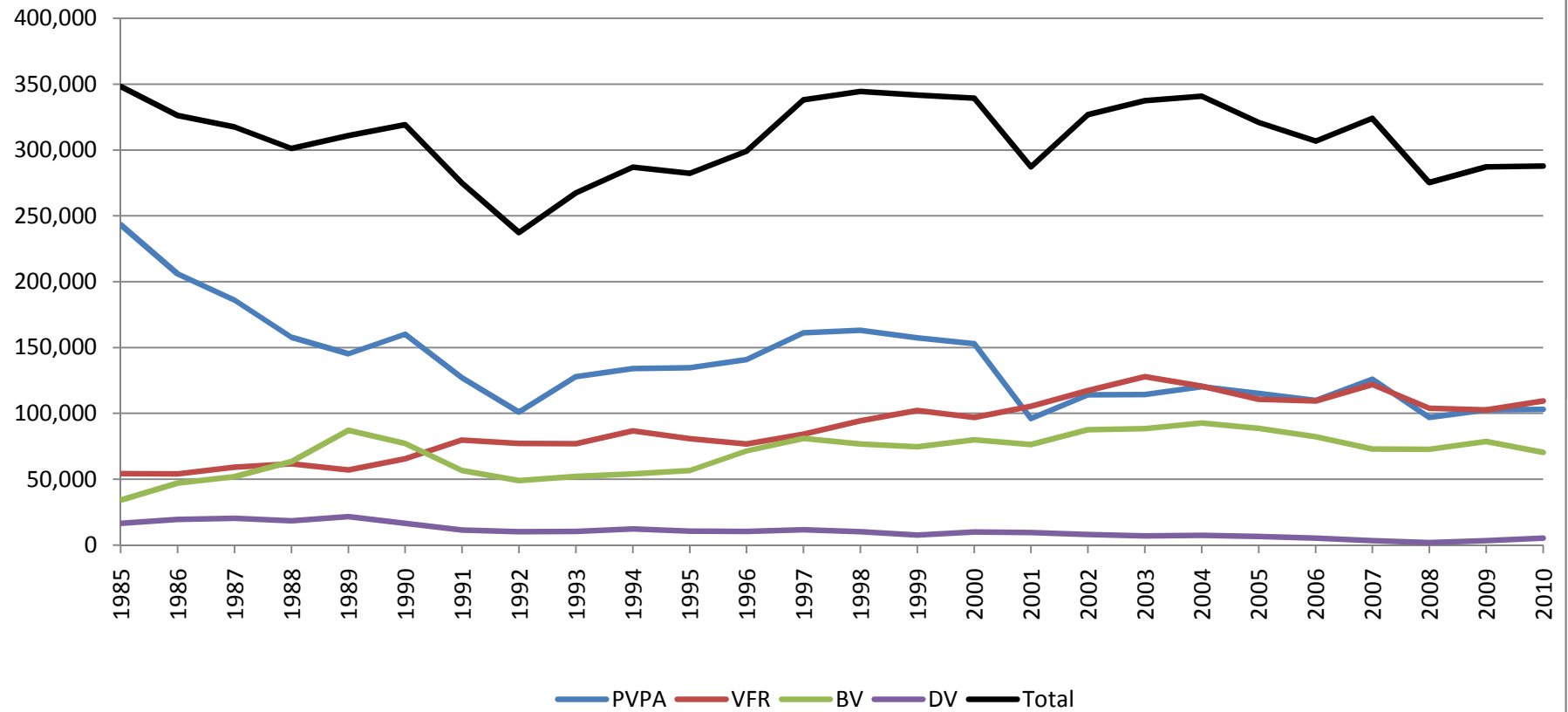
	<b>1994</b>	<b>1995</b>	<b>1996</b>	<b>1997</b>	<b>1998</b>	<b>1999</b>	<b>2000</b>	<b>2001</b>	<b>2002</b>
<i>PVPA</i>	47	48	47	48	47	46	45	33	35
<i>VFR</i>	30	29	26	25	27	30	29	37	36
<i>BV</i>	19	20	24	24	22	22	24	27	27
<i>DV</i>	4	4	3	3	3	2	3	3	2
<i>Total</i>	100	100	100	100	100	100	100	100	100

	<b>2003</b>	<b>2004</b>	<b>2005</b>	<b>2006</b>	<b>2007</b>	<b>2008</b>	<b>2009</b>	<b>2010</b>
<i>PVPA</i>	34	35	36	36	39	35	36	36
<i>VFR</i>	38	35	34	36	38	38	36	38
<i>BV</i>	26	27	28	27	22	26	27	24
<i>DV</i>	2	2	2	2	1	1	1	2
<i>Total</i>	100	100	100	100	100	100	100	100



### Chart 2.1 Visitors by Type 1985 to 2010



**Table 2.6 (a) Number of Visits by Air by Type of Visitor 1985 - 2010**

	<b>1985</b>	<b>1986</b>	<b>1987</b>	<b>1988</b>	<b>1989</b>	<b>1990</b>	<b>1991</b>	<b>1992</b>	<b>1993</b>
<i>PVPA</i>	33,700	33,100	36,500	37,800	34,500	45,400	35,600	30,600	38,000
<i>VFR</i>	22,600	25,700	26,700	32,800	26,800	35,100	41,900	40,100	40,600
<i>BV</i>	28,600	36,500	40,900	53,600	73,900	67,600	43,700	42,700	45,600
<i>DV</i>	100	400	600	400	900	2,000	1,100	1,100	1,100
<i>Total</i>	85,000	95,700	104,600	124,600	136,100	150,100	122,400	114,600	125,300
	<b>1994</b>	<b>1995</b>	<b>1996</b>	<b>1997</b>	<b>1998</b>	<b>1999</b>	<b>2000</b>	<b>2001</b>	<b>2002</b>
<i>PVPA</i>	36,900	38,300	37,100	45,100	47,300	37,100	40,100	31,900	34,300
<i>VFR</i>	48,700	48,500	46,500	58,800	55,600	52,000	48,300	47,400	47,400
<i>BV</i>	46,000	48,800	63,100	70,000	67,800	61,400	67,500	60,400	67,500
<i>DV</i>	1,500	1,200	2,500	3,100	4,700	3,100	1,200	1,400	1,200
<i>Total</i>	133,100	136,800	149,200	176,900	175,500	153,700	157,200	141,100	150,400
	<b>2003</b>	<b>2004</b>	<b>2005</b>	<b>2006</b>	<b>2007</b>	<b>2008</b>	<b>2009</b>	<b>2010</b>	
<i>PVPA</i>	36,200	30,700	36,200	33,600	34,500	24,700	26,600	23,000	
<i>VFR</i>	53,600	57,100	55,900	53,500	53,700	46,200	44,300	46,900	
<i>BV</i>	76,800	77,800	67,000	62,400	58,900	56,900	61,000	54,600	
<i>DV</i>	1,000	1,600	2,500	2,600	1,700	800	800	2,300	
<i>Total</i>	167,600	167,100	161,600	152,200	148,800	128,700	132,700	126,700	

**Table 2.6 (b) Visits by Air by Type of Visitor (% of total visits by air) 1985 - 2010**

	<b>1985</b>	<b>1986</b>	<b>1987</b>	<b>1988</b>	<b>1989</b>	<b>1990</b>	<b>1991</b>	<b>1992</b>	<b>1993</b>
<i>PVPA</i>	40	35	35	30	25	30	29	27	30
<i>VFR</i>	27	27	26	26	20	23	34	35	32
<i>BV</i>	34	38	39	43	54	45	36	37	36
<i>DV</i>	0	0	1	0	1	1	1	1	1
<i>Total</i>	100	100	100	100	100	100	100	100	100
	<b>1994</b>	<b>1995</b>	<b>1996</b>	<b>1997</b>	<b>1998</b>	<b>1999</b>	<b>2000</b>	<b>2001</b>	<b>2002</b>
<i>PVPA</i>	28	28	25	25	27	24	26	23	23
<i>VFR</i>	37	35	31	33	32	34	31	34	32
<i>BV</i>	35	36	42	40	39	40	43	43	45
<i>DV</i>	1	1	2	2	3	2	1	1	1
<i>Total</i>	100	100	100	100	100	100	100	100	100
	<b>2003</b>	<b>2004</b>	<b>2005</b>	<b>2006</b>	<b>2007</b>	<b>2008</b>	<b>2009</b>	<b>2010</b>	
<i>PVPA</i>	22	18	22	22	23	19	20	18	
<i>VFR</i>	32	34	35	35	36	36	33	37	
<i>BV</i>	46	47	41	41	40	44	46	43	
<i>DV</i>	1	1	2	2	1	1	1	2	
<i>Total</i>	100	100	100	100	100	100	100	100	

**Table 2.7 (a) Number of Visits by Sea by Type of Visitor 1985 - 2010**

	<b>1985</b>	<b>1986</b>	<b>1987</b>	<b>1988</b>	<b>1989</b>	<b>1990</b>	<b>1991</b>	<b>1992</b>	<b>1993</b>
<i>PVPA</i>	209,700	172,800	149,500	119,900	110,700	114,600	91,500	70,400	89,800
<i>VFR</i>	31,700	28,300	32,500	28,900	30,300	30,400	37,700	37,100	36,400
<i>BV</i>	5,500	10,500	11,000	9,700	13,300	9,500	12,800	6,300	6,700
<i>DV</i>	16,400	18,900	19,800	18,200	20,600	14,500	10,500	9,100	9,200
<i>Total</i>	263,200	230,500	212,800	176,600	174,900	169,000	152,500	122,800	142,100
	<b>1994</b>	<b>1995</b>	<b>1996</b>	<b>1997</b>	<b>1998</b>	<b>1999</b>	<b>2000</b>	<b>2001</b>	<b>2002</b>
<i>PVPA</i>	97,100	96,200	103,700	116,100	115,800	120,200	112,700	64,100	79,700
<i>VFR</i>	37,900	32,200	30,200	25,400	38,800	50,100	48,600	57,900	69,700
<i>BV</i>	8,000	7,800	8,300	11,000	8,900	13,200	12,300	15,900	20,000
<i>DV</i>	10,700	9,400	7,700	8,600	5,400	4,500	8,700	8,000	6,900
<i>Total</i>	153,800	145,600	149,900	161,100	169,000	188,000	182,200	145,900	176,400
	<b>2003</b>	<b>2004</b>	<b>2005</b>	<b>2006</b>	<b>2007</b>	<b>2008</b>	<b>2009</b>	<b>2010</b>	
<i>PVPA</i>	78,000	89,600	78,900	76,100	91,300	72,200	76,000	80,000	
<i>VFR</i>	74,300	63,600	54,700	55,900	68,300	57,600	58,400	62,500	
<i>BV</i>	11,600	14,900	21,600	19,800	14,000	15,800	17,500	15,800	
<i>DV</i>	6,100	5,700	4,100	2,600	1,700	1,000	2,600	2,900	
<i>Total</i>	169,900	173,800	159,400	154,400	175,300	146,500	154,500	161,100	

**Table 2.7 (b) Visits by Sea by Type of Visitor (% of total visits by sea) 1985 - 2010**

	<b>1985</b>	<b>1986</b>	<b>1987</b>	<b>1988</b>	<b>1989</b>	<b>1990</b>	<b>1991</b>	<b>1992</b>	<b>1993</b>
<i>PVPA</i>	80	75	70	68	63	68	60	57	63
<i>VFR</i>	12	12	15	16	17	18	25	30	26
<i>BV</i>	2	5	5	5	8	6	8	5	5
<i>DV</i>	6	8	9	10	12	9	7	7	6
<i>Total</i>	100	100	100	100	100	100	100	100	100
	<b>1994</b>	<b>1995</b>	<b>1996</b>	<b>1997</b>	<b>1998</b>	<b>1999</b>	<b>2000</b>	<b>2001</b>	<b>2002</b>
<i>PVPA</i>	63	66	69	72	69	64	62	44	45
<i>VFR</i>	25	22	20	16	23	27	27	40	40
<i>BV</i>	5	5	6	7	5	7	7	11	11
<i>DV</i>	7	6	5	5	3	2	5	5	4
<i>Total</i>	100	100	100	100	100	100	100	100	100
	<b>2003</b>	<b>2004</b>	<b>2005</b>	<b>2006</b>	<b>2007</b>	<b>2008</b>	<b>2009</b>	<b>2010</b>	
<i>PVPA</i>	46	52	49	49	52	49	49	50	
<i>VFR</i>	44	37	34	36	39	39	38	39	
<i>BV</i>	7	9	14	13	8	11	11	10	
<i>DV</i>	4	3	3	2	1	1	2	2	
<i>Total</i>	100	100	100	100	100	100	100	100	

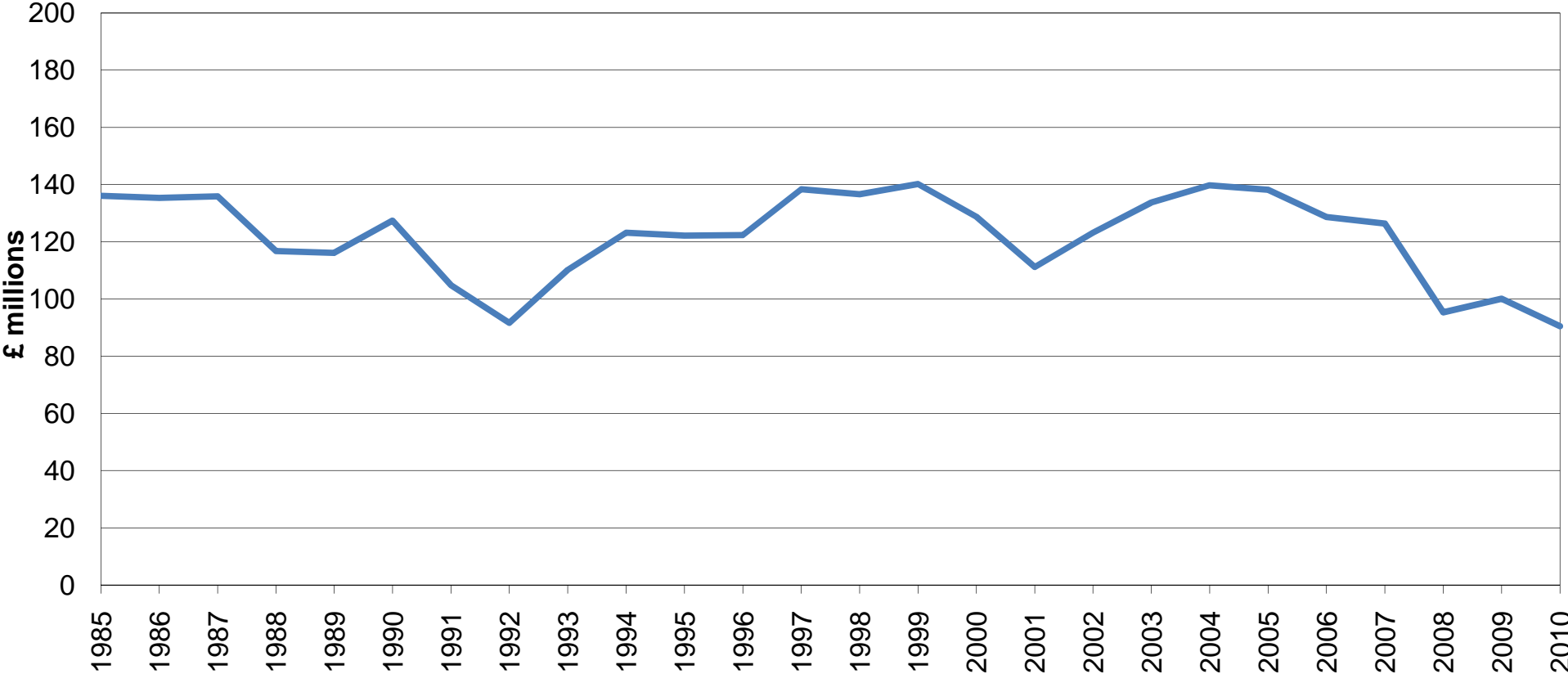
**Table 2.8 (a) Total Visitor Expenditure by Type of Expenditure (£ millions) 2010**

		<i>Travel to/ from the Island</i>	<i>Accomm- odation</i>	<i>Other</i>	<i>Total</i>
<i>All Visitors</i>	<i>Air</i>	16.4	8.5	13.0	37.9
	<i>Sea</i>	14.5	13.5	24.6	52.6
	<i>Total</i>	30.9	22.0	37.6	90.5
<i>of which:</i>					
<i>PVPA</i>	<i>Air</i>	2.6	3.2	3.8	9.5
	<i>Sea</i>	7.0	11.2	12.8	30.9
	<i>Total</i>	9.6	14.3	16.6	40.5
<i>VFR</i>	<i>Air</i>	5.6	0.0	5.0	10.5
	<i>Sea</i>	4.8	0.0	8.8	13.6
	<i>Total</i>	10.4	0.0	13.8	24.2
<i>BV</i>	<i>Air</i>	7.9	5.4	4.2	17.4
	<i>Sea</i>	2.6	2.3	2.9	7.7
	<i>Total</i>	10.4	7.6	7.1	25.1
<i>DV</i>	<i>Air</i>	0.3	0.0	0.1	0.4
	<i>Sea</i>	0.2	0.0	0.1	0.3
	<i>Total</i>	0.6	0.0	0.2	0.8

**Table 2.8 (b) Average Expenditure by Type of Expenditure (£s) 2010**

		<i>Travel to/ from the Island</i>	<i>Accomm- odation</i>	<i>Other</i>	<i>Total</i>
<i>All Visitors</i>	<i>Air</i>	129	67	103	299
	<i>Sea</i>	90	84	153	326
	<i>Total</i>	108	76	131	314
<i>of which:</i>					
<i>PVPA</i>	<i>Air</i>	114	137	164	415
	<i>Sea</i>	87	140	160	387
	<i>Total</i>	93	139	161	393
<i>VFR</i>	<i>Air</i>	119	0	106	225
	<i>Sea</i>	77	0	141	218
	<i>Total</i>	95	0	126	221
<i>BV</i>	<i>Air</i>	144	98	77	319
	<i>Sea</i>	163	144	181	488
	<i>Total</i>	148	108	100	357
<i>DV</i>	<i>Air</i>	151	0	33	184
	<i>Sea</i>	74	0	42	116
	<i>Total</i>	108	0	38	146

**Chart 2.2 Total Visitor Expenditure  
at Constant (2010) Prices**



**Table 2.9 Number of Bed Nights 2010**

		<i>Average</i>	<i>Total</i>
<i>All Staying Visitors</i>	<i>Air</i>	4.1	513,000
<i>(exc. DV)</i>	<i>Sea</i>	6.8	1,083,100
	<i>Total</i>	5.6	1,596,100
<i>of which:</i>			
<i>PVPA</i>	<i>Air</i>	3.4	78,200
	<i>Sea</i>	4.9	391,800
	<i>Total</i>	4.6	470,000
<i>VFR</i>	<i>Air</i>	5.9	276,500
	<i>Sea</i>	9.1	568,400
	<i>Total</i>	7.7	844,900
<i>BV</i>	<i>Air</i>	2.9	158,300
	<i>Sea</i>	7.8	122,900
	<i>Total</i>	4.0	281,200

**Table 2.10 (a) Area of Residence (All Visitors) (%) 2010**

	<i>PVPA</i>	<i>VFR</i>	<i>BV</i>	<i>DV</i>	<i>All</i>
<i>England-North East</i>	4	3	2	2	3
<i>England-North West</i>	32	33	33	60	33
<i>England-Yorks/Humberside</i>	10	8	6	3	8
<i>England-Midlands</i>	15	11	11	9	12
<i>England-East Anglia</i>	3	3	1	0	3
<i>England-South East</i>	12	17	22	8	16
<i>England-South West</i>	4	4	3	3	4
<i>Scotland</i>	4	4	4	1	4
<i>N. Ireland</i>	3	3	5	2	4
<i>S. Ireland</i>	3	3	3	2	3
<i>Wales</i>	4	2	1	0	3
<i>Channel Islands</i>	0	0	2	0	1
<i>Other</i>	7	7	6	8	7
<i>Total</i>	100	100	100	100	100

**Table 2.10 (b) Area of Residence (Visitors by Air) (%) 2010**

	<i>PVPA</i>	<i>VFR</i>	<i>BV</i>	<i>DV</i>	<i>All</i>
<i>England-North East</i>	1	2	1	0	1
<i>England-North West</i>	33	26	31	56	30
<i>England-Yorks/Humberside</i>	3	7	4	0	5
<i>England-Midlands</i>	10	9	11	4	10
<i>England-East Anglia</i>	3	1	1	0	1
<i>England-South East</i>	16	25	25	15	24
<i>England-South West</i>	7	5	3	7	4
<i>Scotland</i>	4	4	4	0	4
<i>N. Ireland</i>	5	5	6	4	5
<i>S. Ireland</i>	7	5	4	4	5
<i>Wales</i>	2	1	1	0	1
<i>Channel Islands</i>	0	1	3	0	2
<i>Other</i>	10	10	6	10	9
<i>Total</i>	100	100	100	100	100

**Table 2.10 (c) Area of Residence (Visitors by Sea) (%) 2010**

	<i>PVPA</i>	<i>VFR</i>	<i>BV</i>	<i>DV</i>	<i>All</i>
<i>England-North East</i>	5	4	6	4	5
<i>England-North West</i>	31	39	38	64	35
<i>England-Yorks/Humberside</i>	11	9	12	6	10
<i>England-Midlands</i>	16	13	14	14	14
<i>England-East Anglia</i>	3	6	2	0	4
<i>England-South East</i>	11	10	10	3	10
<i>England-South West</i>	3	3	4	0	3
<i>Scotland</i>	4	4	4	2	4
<i>N. Ireland</i>	2	2	2	0	2
<i>S. Ireland</i>	3	1	0	0	2
<i>Wales</i>	4	4	3	0	4
<i>Channel Islands</i>	0	0	0	0	0
<i>Other</i>	6	5	3	6	6
<i>Total</i>	100	100	100	100	100

**3. *Isle of Man Residents***



**Table 3.1 Number of Trips by Residents by Type 2010**

		No.	% of Total Visitors
<i>PVPA</i>	<i>Air</i>	91,200	26
	<i>Sea</i>	62,400	18
	<i>Total</i>	153,700	44
<i>VFR</i>	<i>Air</i>	75,900	22
	<i>Sea</i>	56,900	16
	<i>Total</i>	132,800	38
<i>BV</i>	<i>Air</i>	34,100	10
	<i>Sea</i>	12,700	4
	<i>Total</i>	46,800	13
<i>DV</i>	<i>Air</i>	8,600	2
	<i>Sea</i>	8,400	2
	<i>Total</i>	17,000	5
<i>Total</i>	<i>Air</i>	209,900	60
	<i>Sea</i>	140,400	40
	<i>Total</i>	350,300	100

---

**Table 3.2 Number of Nights Off Island by Type 2010**

		<i>Average</i>	<i>Total</i>
<i>All Residents (exc. DT)</i>	<i>Air</i>	6.9	1,380,250
	<i>Sea</i>	8.1	1,070,680
	<i>Total</i>	7.4	2,450,930
<u><i>of which:</i></u>			
<i>PVPA</i>	<i>Air</i>	8.0	729,600
	<i>Sea</i>	6.2	386,880
	<i>Total</i>	7.3	1,116,480
<i>VFR</i>	<i>Air</i>	7.0	531,300
	<i>Sea</i>	8.0	455,200
	<i>Total</i>	7.4	986,500
<i>BV</i>	<i>Air</i>	3.5	119,350
	<i>Sea</i>	18.0	228,600
	<i>Total</i>	7.4	347,950

**Table 3.3 (a) Main Destination of Residents (All Residents) (%) 2010**

	<i>PVPA</i>	<i>VFR</i>	<i>BV</i>	<i>DV</i>	<i>All</i>
<i>England-North East</i>	1	3	2	1	2
<i>England-North West</i>	28	34	26	93	33
<i>England-Yorks/Humberside</i>	3	5	3	1	4
<i>England-Midlands</i>	5	9	7	1	6
<i>England-East Anglia</i>	1	1	1	1	1
<i>England-South East</i>	8	15	34	1	14
<i>England-South West</i>	3	3	3	0	3
<i>Scotland</i>	4	5	6	0	5
<i>N. Ireland</i>	2	5	3	1	3
<i>S. Ireland</i>	2	5	3	0	3
<i>Wales</i>	1	3	1	0	2
<i>Channel Islands</i>	0	0	3	0	1
<i>Other</i>	42	10	10	0	24
<i>Total</i>	100	100	100	100	100

**Table 3.3 (b) Main Destination of Residents (Air) (%) 2010**

	<i>PVPA</i>	<i>VFR</i>	<i>BV</i>	<i>DV</i>	<i>All</i>
<i>England-North East</i>	1	2	2	1	1
<i>England-North West</i>	19	28	21	92	26
<i>England-Yorks/Humberside</i>	1	3	2	1	2
<i>England-Midlands</i>	3	8	5	1	5
<i>England-East Anglia</i>	0	0	0	1	0
<i>England-South East</i>	9	20	40	2	17
<i>England-South West</i>	1	4	2	0	2
<i>Scotland</i>	2	4	6	0	3
<i>N. Ireland</i>	1	7	4	1	4
<i>S. Ireland</i>	2	7	3	0	4
<i>Wales</i>	0	1	0	0	1
<i>Channel Islands</i>	0	0	4	0	1
<i>Other</i>	61	15	11	0	33
<i>Total</i>	100	100	100	100	100

**Table 3.3 (c) Main Destination of Residents (Sea) (%) 2010**

	<i>PVPA</i>	<i>VFR</i>	<i>BV</i>	<i>DV</i>	<i>All</i>
<i>England-North East</i>	2	5	3	0	3
<i>England-North West</i>	40	41	40	94	44
<i>England-Yorks/Humberside</i>	5	8	5	2	6
<i>England-Midlands</i>	8	10	12	1	9
<i>England-East Anglia</i>	2	2	2	1	2
<i>England-South East</i>	8	10	18	0	9
<i>England-South West</i>	7	3	3	0	4
<i>Scotland</i>	7	7	5	0	6
<i>N. Ireland</i>	3	3	1	1	3
<i>S. Ireland</i>	1	2	2	0	2
<i>Wales</i>	3	4	2	0	3
<i>Channel Islands</i>	0	0	0	0	0
<i>Other</i>	16	5	6	0	10
<i>Total</i>	100	100	100	100	100

*Appendices*

## **APPENDIX 1. Sample Size by Category of Passenger and Quarter**

	<b>RES</b>	<b>PVPA</b>	<b>VFR</b>	<b>BV</b>	<b>DV</b>	<b>Total</b>
January to April	3,507	405	1,113	886	36	5,947
May to June	1,508	672	661	304	25	3,170
July to September	1,623	626	727	343	29	3,348
October to December	1,949	166	601	359	15	3,090
Total	8,587	1,869	3,102	1,892	105	15,555

## **APPENDIX 2. Notes on Survey Methodology**

1. Up to 1997, Passenger Survey reports applied results from the survey to the overall number of scheduled arrivals, despite the fact that for reasons of practicality passengers are only interviewed on departure. Since 1997, the first year in which comprehensive and reliable data were available for departure figures, these have been used as the basis for analysis. This change, whilst ensuring greater accuracy, makes little difference to the overall results.
2. The information contained in this report relates only to scheduled departures. It does not include unscheduled departures such as some charter flights, cruise ship passengers and pleasure craft.
3. Some percentages have been rounded and so may not total 100 in every case.
4. Cases are selected using a complex sampling design. All results are re-weighted to account for the different numbers of passengers travelling by each route and mode of travel from the Island. The survey design also corrects for any bias which may otherwise be introduced by the different length of interview completed by different categories of passenger. As with any survey of this type, results are subject to random error variation.
5. Data are collected from departing passengers by way of interviewer-led schedule at Ronaldsway Airport and Douglas Harbour.

## APPENDIX 3. Passenger Survey Questionnaire

### Interviewer

1 Interviewer

### Shift code

2 Shift Code

Answer:

### Accepted or Declined to be Interviewed

3 May I ask you a few questions for the Island's Passenger Survey?  
The interview should only take one or two minutes.

- 1 Accept
- 2 Decline

### Destination

4 Destination

- |                    |                  |
|--------------------|------------------|
| 1 Air-Belfast      | 17 Air-Jersey    |
| 2 Air-Birmingham   | 18 Air-Other     |
| 3 Air-Blackpool    | 20 Sea-Belfast   |
| 4 Air-Bristol      | 21 Sea-Dublin    |
| 6 Air-Edinburgh    | 24 Sea-Heysham   |
| 7 Air-Dublin       | 25 Sea-Liverpool |
| 8 Air-Glasgow      |                  |
| 9 Air-Leeds        |                  |
| 10 Air-Liverpool   |                  |
| 11 Air-Gatwick     |                  |
| 12 Air-Luton       |                  |
| 13 Air-Manchester  |                  |
| 14 Air-Newcastle   |                  |
| 15 Air-Southampton |                  |
| 16 Air-London City |                  |

### Car or Foot Passenger

5 How are you travelling?

- 1 Foot Passenger
- 2 With a Vehicle/Bike/Coach

**Resident**

**6** Do you live in the Isle of Man?

- 1 Yes
- 2 No

**Events**

**7** Was your visit to the Island in connection with any of these Events?

- 1 Yes
- 2 No

**Number in Group**

**8** How many of you are travelling together?

Answer:

**age**

**9** How many of your group are:-

- 0-15
- 16-30
- 31-45
- 46-60
- Over 60

**Business**

**10** Is this trip in connection with your work?

- 1 Yes
- 2 No

**Number of Nights**

**11** How many nights stay does this trip include?

Answer:

**Accom**

**12** Mainly in paid accommodation ( include Homestay ) or with friends or relatives?

- 1 In paid accommodation
- 2 With friends/relatives



**AccommName**

**13** What is the name of your accommodation?

**Area of Residence**

**14** Where do you live?

- 1 England-North East
- 2 England-North West
- 3 England-Yorks/Humberside
- 4 England-Midlands
- 5 England-East Anglia
- 6 England-South East
- 7 England-South West
- 8 Scotland
- 9 N. Ireland
- 10 S. Ireland
- 11 Wales
- 12 Channel Islands
- 13 Other

**Main Destination**

**15** What is your main destination?

- 1 England-North East
- 2 England-North West
- 3 England-Yorks/Humberside
- 4 England-Midlands
- 5 England-East Anglia
- 6 England-South East
- 7 England-South West
- 8 Scotland
- 9 N. Ireland
- 10 S. Ireland
- 11 Wales
- 12 Channel Islands
- 13 Other

**Package**

**16** Are you on a package trip?

(Yes if one payment made for travel and accommodation)

]

- 1 Yes
- 2 No

**Exacc**

**17** What was the cost of your accommodation?

Answer:

**Exaccnum**

**18** How many people does this cover?

Answer:

**Extrav**

**19** What was the cost of your travel to and from the Island?  
(Between IOM and UK/Eire only)  
Answer:

**Extravnum**

**20** How many is this for?  
Answer:

**Expack**

**21** How much did the package cost?  
Answer:

**Expacknum**

**22** How many does this cover?  
Answer:

**ExothV**

**23** How much have you spent whilst in the island?  
Answer:

**ExothR**

**24** What would you estimate to be the total cost of this trip?  
Answer:

**ExothVnum**

**25** How many does this cover?  
Answer:

**ExothRnum**

**26** How many is this for?  
Answer:

**Finish**

**27** Thank you for your help

## **ADDITIONAL PUBLICATIONS AND FURTHER INFORMATION**

The Isle of Man Passenger Survey Annual Report 2010 is one of a number of publications compiled by the Economic Affairs Division of the Isle of Man Treasury (free of charge where no price is given):

Isle of Man Census Report 2006 (£4.50)

Isle of Man National Income 2007/08

Isle of Man Digest of Economic and Social Statistics 2011 (£3.50)

Isle of Man Earnings Survey 2010

Isle of Man General Index of Retail Prices (Monthly Report)

Isle of Man Job Market Statistics (Monthly Report)

All unpriced publications and any additional information may be obtained by contacting:

Economic Affairs Division,  
Isle of Man Treasury,  
Illiam Dhone House,  
2 Circular Road,  
Douglas,  
Isle of Man.  
IM1 1PQ

Telephone: (01624) 685741

Fax: (01624) 685747

email: [economics@gov.im](mailto:economics@gov.im)

web: [www.gov.im/treasury/economic](http://www.gov.im/treasury/economic)

All priced publications may be purchased from:

Tynwald Library,  
Government Office,  
Bucks Road,  
Douglas,  
Isle of Man.  
Tel. 01624 685516



This document can be provided in large print or audio tape on request

Copyright  
Isle of Man Government

ISBN 978-1-904869-27-6

Printed by Isle of Man Government  
Printing Services