



Isle of Man
Government

Reiltys Ellan Vannin



Passenger Survey Annual Report 2011

Economic Affairs Division
Isle of Man Treasury

**ISLE OF MAN PASSENGER SURVEY
ANNUAL REPORT 2011**

<u>CONTENTS</u>	<u>PAGE</u>
INTRODUCTION	1
EXECUTIVE SUMMARY	3
1. Scheduled Passenger Departures	5
1.1 Scheduled Passenger Departures by Mode of Travel 1985-2011	6
1.2 Scheduled Passenger Departures by Quarter 1985-2011	6
1.3 Scheduled Air Passenger Departures by Quarter 1985-2011	7
1.4 Scheduled Sea Passenger Departures by Quarter 1985-2011	7
1.5 (a) Scheduled Departures by Residents and Visitors 1985-2011	8
1.5 (b) Scheduled Departures by Residents and Visitors (% of total) 1985-2011	8
1.6 (a) Air Departures by Residents and Visitors 1985-2011	9
1.6 (b) Air Departures by Residents and Visitors (% of total) 1985-2011	9
1.7 (a) Sea Departures by Residents and Visitors 1985-2011	10
1.7 (b) Sea Departures by Residents and Visitors (% of total) 1985-2011	10
2. Visitors	11
2.1 Number of Visits by Mode of Travel 1985-2011	12
2.2 Number of Visits by Quarter 1985-2011	12
2.3 Number of Visits by Air by Quarter 1985-2011	13
2.4 Number of Visits by Sea by Quarter 1985-2011	13
2.5 (a) Number of Visits by Type of Visitor 1985-2011	14
2.5 (b) Visits by Type of Visitor (% of total visits) 1985-2011	14
<i>Chart 2.1 Visitors by Type 1985 to 2011</i>	15
2.6 (a) Number of Visits by Air by Type of Visitor 1985-2011	16
2.6 (b) Visits by Air by Type of Visitor (% of total visits) 1985-2011	16
2.7 (a) Number of Visits by Sea by Type of Visitor 1985-2011	17
2.7 (b) Visits by Sea by Type of Visitor (% of total visits) 1985-2011	17
2.8 (a) Total Visitor Expenditure by Type of Expenditure 2011	18
2.8 (b) Average Expenditure by Type of Expenditure 2011	18

<i>Chart 2.2</i>	<i>Total Visitor Expenditure at Constant (2011) Prices 1985 to 2011</i>	19
2.9	Number of Bed Nights 2011	20
2.10 (a)	Area of Residence (All Visitors) (%) 2011	20
2.10 (b)	Area of Residence (Visitors by Air) (%) 2011	21
2.10 (c)	Area of Residence (Visitors by Sea) (%) 2011	21
3.	Isle of Man Residents	23
3.1	Number of Trips by Residents by Type 2011	24
3.2	Number of Nights Off Island by Type 2011	24
3.3 (a)	Main Destination of Residents (All Residents) (%) 2011	25
3.3 (b)	Main Destination of Residents (Air) (%) 2011	25
3.3 (c)	Main Destination of Residents (Sea) (%) 2011	26
	Appendices	27
1.	Sample Size by Category of Passenger and Quarter	28
2.	Notes on Survey Methodology	29
3.	Passenger Survey Questionnaire	30
	Additional Publications and Further Information	35

INTRODUCTION

This is the twenty-seventh annual report of the Isle of Man Passenger Survey, containing details of various aspects of passenger traffic to and from the Island in 2011.

The survey has been running continuously since 1985 and provides estimates of the structure of passenger traffic, the numbers and spending of each type of visitor, and trends in these variables over time.

Since its inception the survey has been conducted by staff of the Economic Affairs Division of the Isle of Man Government Treasury, who interview departing passengers at Douglas Harbour and Ronaldsway Airport. Responses from these interviews are recorded electronically and analysed within the Division, with the results released in full report form on an annual basis.

In the Passenger Survey, interviewees are classified under the following definitions of passenger type:-

Passenger Type	Definition
Isle of Man Residents (RES)	Isle of Man residents leaving the Island.
Period Visitors in Paid Accommodation (PVPA)	Non-business visitors who stayed in paid accommodation whilst in the Island.
Period Visitors Visiting Friends and Relatives (VFR)	Non-business visitors who stayed with friends or relatives whilst in the Island.
Business Visitors (BV)	Visitors who were in the Island for business purposes.
Day Visitors (DV)	Non-business visitors who did not stay overnight.

The Report begins with an Executive Summary, which outlines the most significant results for 2011. The results are then presented in detail by a series of tables and graphs. Finally, the technical aspects of the survey are explained, with a section on sample size, methodology and a copy of the survey questionnaire.

Throughout the Report, "quarterly" figures are presented in which "Q1" includes figures for January to April and "Q2" consists of those for May and June. This is to ensure that quarterly comparisons are not distorted by the timing of the Easter break.

This Report is intended to meet the general information requirements of regular users of the Passenger Survey, but additional statistics may be made available on request. Further comments and enquiries should be addressed to:

Peter Hannay,
Senior Research Officer,
Economic Affairs Division,
Isle of Man Treasury,
Illiam Dhone House,
2 Circular Road,
Douglas,
Isle of Man.
IM1 1PQ

Tel.: (01624) 685750
Fax: (01624) 685747
email: Peter.Hannay@gov.im

March, 2012

EXECUTIVE SUMMARY

The Structure of Passenger Traffic

Total scheduled passenger departures rose by 1.6% over the year, from 638,088 in 2010 to 648,597 in 2011. The number of passengers travelling by air rose by 14,290 (4.2%) while the number travelling by sea fell by 3,781 (1.3%), giving the net increase of 10,509 over the year.

Passenger survey results suggest that the overall increase in passenger traffic between 2010 and 2011 was due to an increase in the number of visitors to the Island, which increased by 11,990 (4.2%). The total number of visitors to the Island in 2011 is estimated at 299,778, there was no significant change in the volume of residents travelling off-Island.

Area of Residence/Destination

As always, the largest number of visitors came from the North West of England (34.6%). Other regions that provide a substantial share of the visitor total include South East England (16.8%) and the Midlands (11.1%). 6.9% of all visitors came from outside the British Islands/Eire.

For more than one-third of residents travelling off-Island, the main destination was the North West of England. A further 21.6% were travelling to a destination outside the British Islands/Eire.

Length of stay

The average length of stay of visitors (excluding day visitors) was an estimated 5.1 nights in 2011, down from 5.6 in 2010. The average length of stay for residents travelling off-Island (again excluding those returning the same day) was 7.4 nights, unchanged from the 2010 figure.

Expenditure

Including expenditure on travel to and from the Island, visitors spent just short of £98 million in 2011, an increase of 8.1% on the total expenditure figure of £90.5 million in 2010. On average, visitors spent around £326 per visit compared with an estimated £314 in 2010.

1. Scheduled Passenger Departures

Table 1.1 Scheduled Passenger Departures by Mode of Travel 1985 - 2011

	1985	1986	1987	1988	1989	1990	1991	1992	1993
<i>Air</i>	157,690	171,593	197,492	241,292	251,533	266,350	233,839	229,012	241,612
<i>Sea</i>	305,018	278,014	266,125	235,777	235,480	235,869	233,359	219,983	227,035
Total	462,708	449,607	463,617	477,069	487,013	502,219	467,198	448,995	468,647

	1994	1995	1996	1997	1998	1999	2000	2001	2002
<i>Air</i>	254,709	263,136	299,291	334,856	348,974	333,177	350,606	346,536	360,557
<i>Sea</i>	236,380	235,244	219,224	231,353	240,285	271,862	290,038	269,915	312,722
Total	491,089	498,380	518,515	566,209	589,259	605,039	640,644	616,451	673,279

	2003	2004	2005	2006	2007	2008	2009	2010	2011
<i>Air</i>	369,433	381,398	397,955	390,130	375,773	377,384	353,666	336,604	350,894
<i>Sea</i>	314,130	303,056	283,297	281,121	312,237	297,388	295,910	301,484	297,703
Total	683,563	684,454	681,252	671,251	688,010	674,772	649,576	638,088	648,597

Table 1.2 Scheduled Passenger Departures by Quarter 1985 - 2011

	1985	1986	1987	1988	1989	1990	1991	1992	1993
<i>Q1</i>	68,764	65,780	75,954	85,267	98,683	106,965	99,610	99,417	104,419
<i>Q2</i>	119,887	111,700	110,409	107,194	110,769	116,457	106,773	102,752	106,366
<i>Q3</i>	219,706	214,146	211,721	211,320	199,975	196,582	181,692	168,930	174,574
<i>Q4</i>	54,351	57,981	65,533	73,288	77,586	82,215	79,123	77,896	83,288
Total	462,708	449,607	463,617	477,069	487,013	502,219	467,198	448,995	468,647

	1994	1995	1996	1997	1998	1999	2000	2001	2002
<i>Q1</i>	108,528	108,607	112,606	127,285	142,024	148,156	157,854	158,663	168,960
<i>Q2</i>	107,506	114,057	116,359	122,446	131,204	128,013	139,400	113,538	145,367
<i>Q3</i>	188,406	186,477	189,074	206,307	203,499	211,017	217,421	214,264	224,063
<i>Q4</i>	86,649	89,239	100,476	110,153	112,532	117,853	125,969	129,986	134,889
Total	491,089	498,380	518,515	566,191	589,259	605,039	640,644	616,451	673,279

	2003	2004	2005	2006	2007	2008	2009	2010	2011
<i>Q1</i>	173,977	176,298	175,652	174,780	172,592	178,142	164,758	163,021	176,411
<i>Q2</i>	142,368	138,770	139,070	134,866	148,770	139,378	134,526	132,063	136,580
<i>Q3</i>	226,775	228,603	226,731	221,087	223,693	222,960	217,696	216,500	209,819
<i>Q4</i>	140,443	140,783	139,799	140,518	142,955	134,292	132,596	126,504	125,787
Total	683,563	684,454	681,252	671,251	688,010	674,772	649,576	638,088	648,597

Table 1.3 Scheduled Air Passenger Departures by Quarter 1985 - 2011

	1985	1986	1987	1988	1989	1990	1991	1992	1993
<i>Q1</i>	35,300	41,782	46,504	62,372	67,390	74,396	62,253	63,548	63,589
<i>Q2</i>	32,781	33,328	38,963	50,704	50,148	53,519	46,833	44,449	46,496
<i>Q3</i>	56,375	57,028	67,176	76,903	78,379	82,647	73,266	70,142	75,167
<i>Q4</i>	33,234	39,455	44,849	51,313	55,616	55,788	51,487	50,873	56,360
Total	157,690	171,593	197,492	241,292	251,533	266,350	233,839	229,012	241,612

	1994	1995	1996	1997	1998	1999	2000	2001	2002
<i>Q1</i>	71,622	72,634	78,438	92,152	99,906	98,294	103,349	103,606	108,118
<i>Q2</i>	49,212	49,250	57,115	63,229	66,629	56,726	62,382	2,010	65,649
<i>Q3</i>	75,110	78,123	90,347	98,648	101,352	95,769	97,477	98,268	99,047
<i>Q4</i>	58,765	63,129	73,391	80,809	81,087	82,388	87,398	85,284	87,743
Total	254,709	263,136	299,291	334,838	348,974	333,177	350,606	289,168	360,557

	2003	2004	2005	2006	2007	2008	2009	2010	2011
<i>Q1</i>	107,777	111,540	119,381	116,904	111,087	120,768	105,150	98,386	103,405
<i>Q2</i>	65,594	63,296	72,850	69,918	69,257	68,644	63,643	59,296	63,615
<i>Q3</i>	103,135	109,256	108,585	107,277	99,417	99,620	96,636	95,344	96,522
<i>Q4</i>	92,927	97,306	97,139	96,031	96,012	88,352	88,237	83,578	87,352
Total	369,433	381,398	397,955	390,130	375,773	377,384	353,666	336,604	350,894

Table 1.4 Scheduled Sea Passenger Departures by Quarter 1985 - 2011

	1985	1986	1987	1988	1989	1990	1991	1992	1993
<i>Q1</i>	33,464	23,998	29,450	22,895	31,293	32,569	37,357	35,869	40,830
<i>Q2</i>	87,106	78,372	71,446	56,490	60,621	62,938	59,940	58,303	59,870
<i>Q3</i>	163,331	157,118	144,545	134,417	121,596	113,935	108,426	98,788	99,407
<i>Q4</i>	21,117	18,526	20,684	21,975	21,970	26,427	27,636	27,023	26,928
Total	305,018	278,014	266,125	235,777	235,480	235,869	233,359	219,983	227,035

	1994	1995	1996	1997	1998	1999	2000	2001	2002
<i>Q1</i>	36,906	35,973	34,168	35,133	42,118	49,862	54,505	55,057	60,842
<i>Q2</i>	58,294	64,807	59,244	59,217	64,575	71,287	77,018	54,160	79,718
<i>Q3</i>	113,296	108,354	98,727	107,659	102,147	115,248	119,944	115,996	125,016
<i>Q4</i>	27,884	26,110	27,085	29,344	31,445	35,465	38,571	44,702	47,146
Total	236,380	235,244	219,224	231,353	240,285	271,862	290,038	269,915	312,722

	2003	2004	2005	2006	2007	2008	2009	2010	2011
<i>Q1</i>	66,200	64,758	56,271	57,876	61,505	57,374	59,608	64,635	73,006
<i>Q2</i>	76,774	75,474	66,220	64,948	79,513	70,734	70,883	72,767	72,965
<i>Q3</i>	123,640	119,347	118,146	113,810	124,276	123,340	121,060	121,156	113,297
<i>Q4</i>	47,516	43,477	42,660	44,487	46,943	45,940	44,359	42,926	38,435
Total	314,130	303,056	283,297	281,121	312,237	297,388	295,910	301,484	297,703

Table 1.5 (a) Scheduled Departures by IOM Residents and Visitors 1985 - 2011

	1985	1986	1987	1988	1989	1990	1991	1992	1993
<i>Resident</i>	114,479	123,339	146,209	175,874	176,015	183,071	192,356	211,616	201,233
<i>Visitor</i>	348,229	326,268	317,408	301,195	310,998	319,148	274,842	237,379	267,414
<i>Total</i>	462,708	449,607	463,617	477,069	487,013	502,219	467,198	448,995	468,647
	1994	1995	1996	1997	1998	1999	2000	2001	2002
<i>Resident</i>	204,187	216,036	219,367	228,218	244,793	263,406	301,204	329,388	346,519
<i>Visitor</i>	286,902	282,344	299,148	337,991	344,466	341,633	339,440	287,063	326,760
<i>Total</i>	491,089	498,380	518,515	566,209	589,259	605,039	640,644	616,451	673,279
	2003	2004	2005	2006	2007	2008	2009	2010	2011
<i>Resident</i>	346,145	343,552	360,261	364,661	363,873	399,569	362,452	350,300	348,819
<i>Visitor</i>	337,418	340,902	320,991	306,590	324,137	275,203	287,124	287,788	299,778
<i>Total</i>	683,563	684,454	681,252	671,251	688,010	674,772	649,576	638,088	648,597

Table 1.5 (b) Scheduled Departures by IOM Residents and Visitors (% of total) 1985 - 2011

	1985	1986	1987	1988	1989	1990	1991	1992	1993
<i>Resident</i>	24.7	27.4	31.5	36.9	36.1	36.5	41.2	47.1	42.9
<i>Visitor</i>	75.3	72.6	68.5	63.1	63.9	63.5	58.8	52.9	57.1
<i>Total</i>	100.0	100.0	100.0	100.0	100.0	100.0	100.0	100.0	100.0
	1994	1995	1996	1997	1998	1999	2000	2001	2002
<i>Resident</i>	41.6	43.3	42.3	40.3	41.5	43.5	47.0	53.4	51.5
<i>Visitor</i>	58.4	56.7	57.7	59.7	58.5	56.5	53.0	46.6	48.5
<i>Total</i>	100.0	100.0	100.0	100.0	100.0	100.0	100.0	100.0	100.0
	2003	2004	2005	2006	2007	2008	2009	2010	2011
<i>Resident</i>	50.6	50.2	52.9	54.3	52.9	59.2	55.8	54.9	53.8
<i>Visitor</i>	49.4	49.8	47.1	45.7	47.1	40.8	44.2	45.1	46.2
<i>Total</i>	100.0	100.0	100.0	100.0	100.0	100.0	100.0	100.0	100.0

Table 1.6 (a) Scheduled Air Departures by IOM Residents and Visitors 1985 - 2011

	1985	1986	1987	1988	1989	1990	1991	1992	1993
<i>Resident</i>	72,688	75,845	92,914	116,742	115,457	116,238	111,453	114,453	116,272
<i>Visitor</i>	85,002	95,748	104,578	124,550	136,076	150,112	122,386	114,559	125,340
<i>Total</i>	157,690	171,593	197,492	241,292	251,533	266,350	233,839	229,012	241,612

	1994	1995	1996	1997	1998	1999	2000	2001	2002
<i>Resident</i>	121,602	126,345	150,090	157,931	173,476	179,505	193,404	205,404	210,170
<i>Visitor</i>	133,107	136,791	149,201	176,925	175,498	153,672	157,202	141,132	150,387
<i>Total</i>	254,709	263,136	299,291	334,856	348,974	333,177	350,606	346,536	360,557

	2003	2004	2005	2006	2007	2008	2009	2010	2011
<i>Resident</i>	201,876	214,301	236,394	237,971	226,942	248,681	221,008	209,889	212,200
<i>Visitor</i>	167,557	167,097	161,561	152,159	148,831	128,703	132,658	126,715	138,694
<i>Total</i>	369,433	381,398	397,955	390,130	375,773	377,384	353,666	336,604	350,894

Table 1.6 (b) Scheduled Air Departures by IOM Residents and Visitors (% of total) 1985 - 2011

	1985	1986	1987	1988	1989	1990	1991	1992	1993
<i>Resident</i>	46.1	44.2	47.0	48.4	45.9	43.6	47.7	50.0	48.1
<i>Visitor</i>	53.9	55.8	53.0	51.6	54.1	56.4	52.3	50.0	51.9
<i>Total</i>	100.0	100.0	100.0	100.0	100.0	100.0	100.0	100.0	100.0

	1994	1995	1996	1997	1998	1999	2000	2001	2002
<i>Resident</i>	47.7	48.0	50.1	47.2	49.7	53.9	55.2	59.3	58.3
<i>Visitor</i>	52.3	52.0	49.9	52.8	50.3	46.1	44.8	40.7	41.7
<i>Total</i>	100.0	100.0	100.0	100.0	100.0	100.0	100.0	100.0	100.0

	2003	2004	2005	2006	2007	2008	2009	2010	2011
<i>Resident</i>	54.6	56.2	59.4	61.0	60.4	65.9	62.5	62.4	60.5
<i>Visitor</i>	45.4	43.8	40.6	39.0	39.6	34.1	37.5	37.6	39.5
<i>Total</i>	100.0	100.0	100.0	100.0	100.0	100.0	100.0	100.0	100.0

Table 1.7 (a) Scheduled Sea Departures by IOM Residents and Visitors 1985 - 2011

	1985	1986	1987	1988	1989	1990	1991	1992	1993
<i>Resident</i>	41,791	47,494	53,295	59,132	60,558	66,833	80,903	97,163	84,961
<i>Visitor</i>	263,227	230,520	212,830	176,645	174,922	169,036	152,456	122,820	142,074
<i>Total</i>	305,018	278,014	266,125	235,777	235,480	235,869	233,359	219,983	227,035

	1994	1995	1996	1997	1998	1999	2000	2001	2002
<i>Resident</i>	82,585	89,691	69,277	70,287	71,317	83,901	107,800	123,984	136,349
<i>Visitor</i>	153,795	145,553	149,947	161,066	168,968	187,961	182,238	145,931	176,373
<i>Total</i>	236,380	235,244	219,224	231,353	240,285	271,862	290,038	269,915	312,722

	2003	2004	2005	2006	2007	2008	2009	2010	2011
<i>Resident</i>	144,269	129,251	123,867	126,690	136,931	150,888	141,444	140,411	136,619
<i>Visitor</i>	169,861	173,805	159,430	154,431	175,306	146,500	154,466	161,073	161,084
<i>Total</i>	314,130	303,056	283,297	281,121	312,237	297,388	295,910	301,484	297,703

Table 1.7 (b) Scheduled Sea Departures by IOM Residents and Visitors (% of total) 1985 - 2011

	1985	1986	1987	1988	1989	1990	1991	1992	1993
<i>Resident</i>	13.7	17.1	20.0	25.1	25.7	28.3	34.7	44.2	37.4
<i>Visitor</i>	86.3	82.9	80.0	74.9	74.3	71.7	65.3	55.8	62.6
<i>Total</i>	100.0	100.0	100.0	100.0	100.0	100.0	100.0	100.0	100.0

	1994	1995	1996	1997	1998	1999	2000	2001	2002
<i>Resident</i>	34.9	38.1	31.6	30.4	29.7	30.9	37.2	45.9	43.6
<i>Visitor</i>	65.1	61.9	68.4	69.6	70.3	69.1	62.8	54.1	56.4
<i>Total</i>	100.0	100.0	100.0	100.0	100.0	100.0	100.0	100.0	100.0

	2003	2004	2005	2006	2007	2008	2009	2010	2011
<i>Resident</i>	45.9	42.6	43.7	45.1	43.9	50.7	47.8	46.6	45.9
<i>Visitor</i>	54.1	57.4	56.3	54.9	56.1	49.3	52.2	53.4	54.1
<i>Total</i>	100.0	100.0	100.0	100.0	100.0	100.0	100.0	100.0	100.0

2. *Visitors*

Table 2.1 Number of Visits by Mode of Travel 1985 - 2011

	1985	1986	1987	1988	1989	1990	1991	1992	1993
<i>Air</i>	85,002	95,748	104,578	124,550	136,076	150,112	122,386	114,559	125,340
<i>Sea</i>	263,227	230,520	212,830	176,645	174,922	169,036	152,456	122,820	142,074
Total	348,229	326,268	317,408	301,195	310,998	319,148	274,842	237,379	267,414
	1994	1995	1996	1997	1998	1999	2000	2001	2002
<i>Air</i>	133,107	136,791	149,201	176,925	175,498	153,672	157,202	141,132	150,387
<i>Sea</i>	153,795	145,553	149,947	161,066	168,968	187,961	182,238	145,931	176,373
Total	286,902	282,344	299,148	337,991	344,466	341,633	339,440	287,063	326,760
	2003	2004	2005	2006	2007	2008	2009	2010	2011
<i>Air</i>	167,557	167,097	161,561	152,159	148,831	128,703	132,658	126,715	138,694
<i>Sea</i>	169,861	173,805	159,430	154,431	175,306	146,500	154,466	161,073	161,084
Total	337,418	340,902	320,991	306,590	324,137	275,203	287,124	287,788	299,778

Table 2.2 Number of Visits by Quarter 1985 - 2011

	1985	1986	1987	1988	1989	1990	1991	1992	1993
<i>Q1</i>	37,101	32,278	37,264	40,308	47,205	53,963	46,056	44,195	45,928
<i>Q2</i>	98,199	86,964	81,414	67,602	73,379	73,901	68,084	63,573	71,589
<i>Q3</i>	188,161	181,620	168,652	159,264	151,485	151,449	130,569	102,416	116,616
<i>Q4</i>	24,768	25,406	30,078	34,021	38,929	39,835	30,133	27,195	33,281
Total	348,229	326,268	317,408	301,195	310,998	319,148	274,842	237,379	267,414
	1994	1995	1996	1997	1998	1999	2000	2001	2002
<i>Q1</i>	53,786	49,422	55,965	63,727	74,522	72,528	73,811	58,069	61,911
<i>Q2</i>	71,696	74,651	77,069	79,110	86,897	84,077	90,810	59,296	84,706
<i>Q3</i>	124,926	122,821	121,920	142,737	133,073	135,007	123,468	120,218	124,631
<i>Q4</i>	36,494	35,450	44,194	52,399	49,974	50,021	51,351	49,480	55,512
Total	286,902	282,344	299,148	337,973	344,466	341,633	339,440	287,063	326,760
	2003	2004	2005	2006	2007	2008	2009	2010	2011
<i>Q1</i>	70,268	76,794	72,923	65,005	69,749	59,374	64,731	67,732	69,175
<i>Q2</i>	86,860	79,269	77,703	73,753	90,931	66,737	76,769	68,014	75,274
<i>Q3</i>	122,846	128,145	120,331	117,358	116,512	105,920	105,334	109,016	112,303
<i>Q4</i>	57,444	56,694	50,034	50,474	46,945	43,172	40,290	43,026	43,026
Total	337,418	340,902	320,991	306,590	324,137	275,203	287,124	287,788	299,778

Table 2.3 Number of Visits by Air by Quarter 1985 - 2011

	1985	1986	1987	1988	1989	1990	1991	1992	1993
<i>Q1</i>	15,817	18,294	20,212	27,308	31,248	37,567	30,823	29,749	27,661
<i>Q2</i>	19,548	18,377	22,798	25,052	28,792	30,215	27,998	24,809	27,235
<i>Q3</i>	36,749	40,846	40,845	47,779	48,410	54,876	44,498	38,764	47,402
<i>Q4</i>	12,888	18,231	20,723	24,411	27,626	27,454	19,067	21,237	23,042
<i>Total</i>	85,002	95,748	104,578	124,550	136,076	150,112	122,386	114,559	125,340
	1994	1995	1996	1997	1998	1999	2000	2001	2002
<i>Q1</i>	33,462	35,127	38,108	42,734	48,837	42,386	48,226	37,860	41,174
<i>Q2</i>	28,382	27,794	31,013	37,955	37,529	27,867	34,077	25,201	28,960
<i>Q3</i>	46,337	48,428	49,383	57,779	56,372	50,942	43,301	48,363	47,654
<i>Q4</i>	24,926	25,442	30,697	38,439	32,760	32,477	31,598	29,708	32,599
<i>Total</i>	133,107	136,791	149,201	176,907	175,498	153,672	157,202	141,132	150,387
	2003	2004	2005	2006	2007	2008	2009	2010	2011
<i>Q1</i>	45,202	43,822	46,807	42,524	43,716	35,222	39,560	39,457	38,816
<i>Q2</i>	37,944	29,797	32,591	25,805	35,683	27,967	29,235	20,515	26,257
<i>Q3</i>	49,386	54,345	49,549	49,162	42,276	36,817	37,547	38,844	43,022
<i>Q4</i>	35,025	39,133	32,614	34,668	27,156	28,697	26,316	27,899	30,599
<i>Total</i>	167,557	167,097	161,561	152,159	148,831	128,703	132,658	126,715	138,694

Table 2.4 Number of Visits by Sea by Quarter 1985 - 2011

	1985	1986	1987	1988	1989	1990	1991	1992	1993
<i>Q1</i>	21,284	13,984	17,052	13,000	15,957	16,396	15,233	14,446	18,267
<i>Q2</i>	78,651	68,587	58,616	42,550	44,587	43,686	40,086	38,764	44,354
<i>Q3</i>	151,412	140,774	127,807	111,485	103,075	96,573	86,071	63,652	69,214
<i>Q4</i>	11,880	7,175	9,355	9,610	11,303	12,381	11,066	5,958	10,239
<i>Total</i>	263,227	230,520	212,830	176,645	174,922	169,036	152,456	122,820	142,074
	1994	1995	1996	1997	1998	1999	2000	2001	2002
<i>Q1</i>	20,324	14,295	17,857	20,993	25,685	30,142	25,585	20,209	20,737
<i>Q2</i>	43,314	46,857	46,056	41,155	49,368	56,210	56,733	34,095	55,746
<i>Q3</i>	78,589	74,393	72,537	84,958	76,701	84,065	80,167	71,855	76,977
<i>Q4</i>	11,568	10,008	13,497	13,960	17,214	17,544	19,753	19,772	22,913
<i>Total</i>	153,795	145,553	149,947	161,066	168,968	187,961	182,238	145,931	176,373
	2003	2004	2005	2006	2007	2008	2009	2010	2011
<i>Q1</i>	25,066	32,972	26,116	22,481	26,033	24,152	25,171	28,275	30,359
<i>Q2</i>	48,916	49,472	45,112	47,948	55,248	38,770	47,534	47,499	49,017
<i>Q3</i>	73,460	73,800	70,782	68,196	74,236	69,103	67,787	70,172	69,281
<i>Q4</i>	22,419	17,561	17,420	15,806	19,789	14,475	13,974	15,127	12,427
<i>Total</i>	169,861	173,805	159,430	154,431	175,306	146,500	154,466	161,073	161,084

Table 2.5 (a) Number of Visits by Type of Visitor 1985 - 2011

	1985	1986	1987	1988	1989	1990	1991	1992	1993
<i>PVPA</i>	243,327	205,886	186,018	157,707	145,188	160,040	127,127	100,960	127,837
<i>VFR</i>	54,323	54,019	59,200	61,621	57,116	65,506	79,695	77,234	77,012
<i>BV</i>	34,059	47,006	51,875	63,336	87,185	77,085	56,500	49,014	52,231
<i>DV</i>	16,520	19,357	20,315	18,531	21,509	16,517	11,520	10,171	10,334
<i>Total</i>	348,229	326,268	317,408	301,195	310,998	319,148	274,842	237,379	267,414
	1994	1995	1996	1997	1998	1999	2000	2001	2002
<i>PVPA</i>	134,003	134,546	140,784	161,142	163,114	157,322	152,847	95,948	113,978
<i>VFR</i>	86,614	80,716	76,666	84,188	94,438	102,170	96,920	105,345	117,165
<i>BV</i>	54,029	56,553	71,452	80,980	76,751	74,620	79,814	76,311	87,536
<i>DV</i>	12,256	10,529	10,246	11,681	10,163	7,521	9,859	9,459	8,081
<i>Total</i>	286,902	282,344	299,148	337,991	344,466	341,633	339,440	287,063	326,760
	2003	2004	2005	2006	2007	2008	2009	2010	2011
<i>PVPA</i>	114,207	120,270	115,107	109,753	125,858	96,929	102,618	102,954	104,692
<i>VFR</i>	127,814	120,688	110,619	109,347	121,952	103,814	102,638	109,320	118,679
<i>BV</i>	88,385	92,658	88,651	82,276	72,947	72,674	78,549	70,356	68,622
<i>DV</i>	7,012	7,286	6,614	5,214	3,380	1,786	3,319	5,158	7,785
<i>Total</i>	337,418	340,902	320,991	306,590	324,137	275,203	287,124	287,788	299,778

Table 2.5 (b) Visits by Type of Visitor (% of total visits) 1985 - 2011

	1985	1986	1987	1988	1989	1990	1991	1992	1993
<i>PVPA</i>	69.9	63.1	58.6	52.4	46.7	50.1	46.3	42.5	47.8
<i>VFR</i>	15.6	16.6	18.7	20.5	18.4	20.5	29.0	32.5	28.8
<i>BV</i>	9.8	14.4	16.3	21.0	28.0	24.2	20.6	20.6	19.5
<i>DV</i>	4.7	5.9	6.4	6.2	6.9	5.2	4.2	4.3	3.9
<i>Total</i>	100.0	100.0	100.0	100.0	100.0	100.0	100.0	100.0	100.0
	1994	1995	1996	1997	1998	1999	2000	2001	2002
<i>PVPA</i>	46.7	47.7	47.1	47.7	47.4	46.1	45.0	33.4	34.9
<i>VFR</i>	30.2	28.6	25.6	24.9	27.4	29.9	28.6	36.7	35.9
<i>BV</i>	18.8	20.0	23.9	24.0	22.3	21.8	23.5	26.6	26.8
<i>DV</i>	4.3	3.7	3.4	3.5	3.0	2.2	2.9	3.3	2.5
<i>Total</i>	100.0	100.0	100.0	100.0	100.0	100.0	100.0	100.0	100.0
	2003	2004	2005	2006	2007	2008	2009	2010	2011
<i>PVPA</i>	33.8	35.3	35.9	35.8	38.8	35.2	35.7	35.8	34.9
<i>VFR</i>	37.9	35.4	34.5	35.7	37.6	37.7	35.7	38.0	39.6
<i>BV</i>	26.2	27.2	27.6	26.8	22.5	26.4	27.4	24.4	22.9
<i>DV</i>	2.1	2.1	2.1	1.7	1.0	0.6	1.2	1.8	2.6
<i>Total</i>	100.0	100.0	100.0	100.0	100.0	100.0	100.0	100.0	100.0

**Chart 2.1 Visitors by Type
1985 to 2011**

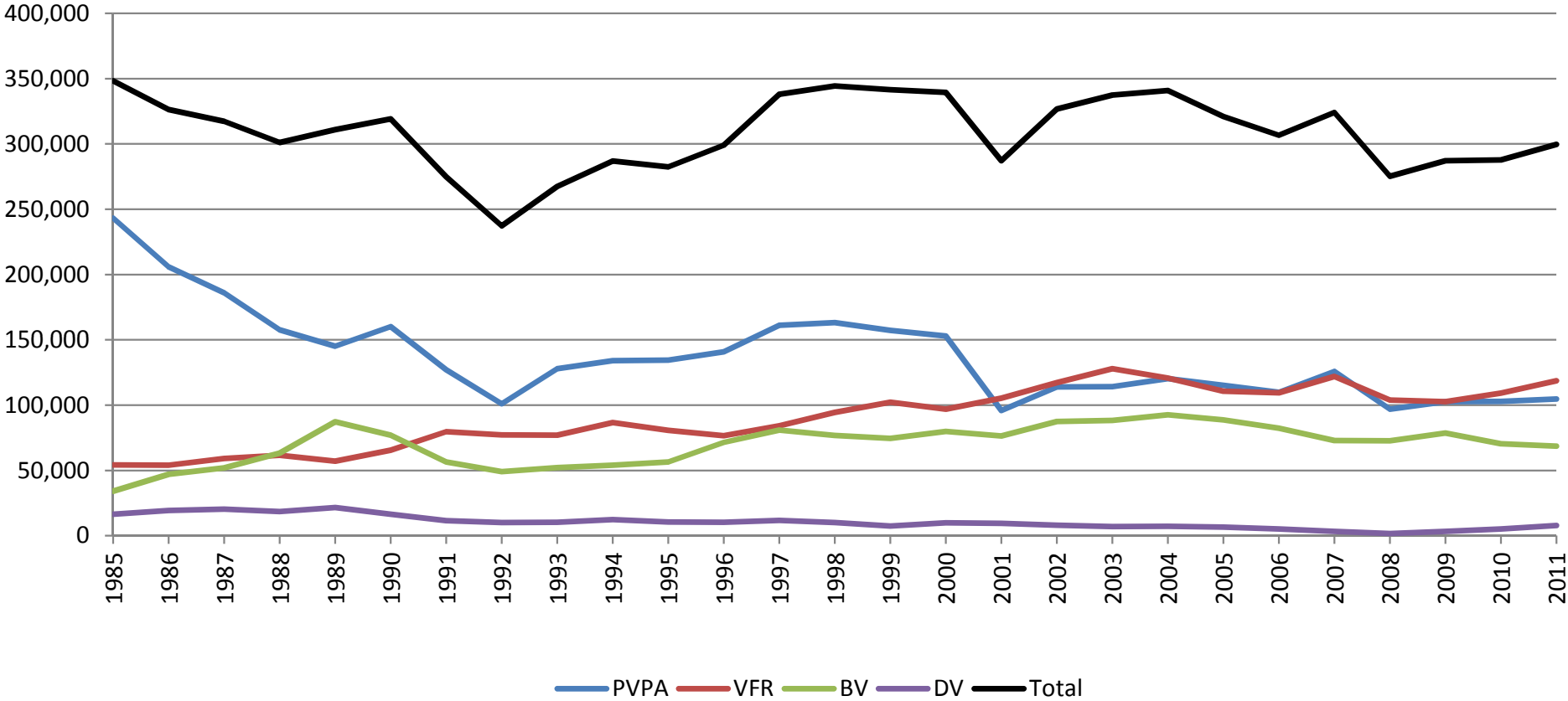


Table 2.6 (a) Number of Visits by Air by Type of Visitor 1985 - 2011

	1985	1986	1987	1988	1989	1990	1991	1992	1993
<i>PVPA</i>	33,667	33,117	36,501	37,833	34,478	45,430	35,647	30,603	38,014
<i>VFR</i>	22,616	25,732	26,669	32,761	26,816	35,107	41,946	40,144	40,631
<i>BV</i>	28,575	36,464	40,855	53,592	73,878	67,560	43,739	42,702	45,559
<i>DV</i>	144	435	553	364	904	2,015	1,054	1,110	1,136
<i>Total</i>	85,002	95,748	104,578	124,550	136,076	150,112	122,386	114,559	125,340
	1994	1995	1996	1997	1998	1999	2000	2001	2002
<i>PVPA</i>	36,909	38,340	37,078	45,053	47,317	37,142	40,127	31,896	34,259
<i>VFR</i>	48,700	48,522	46,476	58,810	55,593	52,044	48,330	47,411	47,439
<i>BV</i>	45,987	48,772	63,134	69,962	67,843	61,418	67,546	60,377	67,532
<i>DV</i>	1,511	1,157	2,513	3,100	4,745	3,068	1,199	1,448	1,157
<i>Total</i>	133,107	136,791	149,201	176,925	175,498	153,672	157,202	141,132	150,387
	2003	2004	2005	2006	2007	2008	2009	2010	2011
<i>PVPA</i>	36,217	30,675	36,186	33,648	34,531	24,732	26,616	23,004	26,058
<i>VFR</i>	53,558	57,062	55,889	53,450	53,670	46,242	44,262	46,858	55,209
<i>BV</i>	76,822	77,751	67,004	62,438	58,927	56,924	61,022	54,600	54,247
<i>DV</i>	960	1,609	2,482	2,623	1,703	805	758	2,253	3,180
<i>Total</i>	167,557	167,097	161,561	152,159	148,831	128,703	132,658	126,715	138,694

Table 2.6 (b) Visits by Air by Type of Visitor (% of total visits by air) 1985 - 2011

	1985	1986	1987	1988	1989	1990	1991	1992	1993
<i>PVPA</i>	39.6	34.6	34.9	30.4	25.3	30.3	29.1	26.7	30.3
<i>VFR</i>	26.6	26.9	25.5	26.3	19.7	23.4	34.3	35.0	32.4
<i>BV</i>	33.6	38.1	39.1	43.0	54.3	45.0	35.7	37.3	36.3
<i>DV</i>	0.2	0.5	0.5	0.3	0.7	1.3	0.9	1.0	0.9
<i>Total</i>	100.0	100.0	100.0	100.0	100.0	100.0	100.0	100.0	100.0
	1994	1995	1996	1997	1998	1999	2000	2001	2002
<i>PVPA</i>	27.7	28.0	24.9	25.5	27.0	24.2	25.5	22.6	22.8
<i>VFR</i>	36.6	35.5	31.1	33.2	31.7	33.9	30.7	33.6	31.5
<i>BV</i>	34.5	35.7	42.3	39.5	38.7	40.0	43.0	42.8	44.9
<i>DV</i>	1.1	0.8	1.7	1.8	2.7	2.0	0.8	1.0	0.8
<i>Total</i>	100.0	100.0	100.0	100.0	100.0	100.0	100.0	100.0	100.0
	2003	2004	2005	2006	2007	2008	2009	2010	2011
<i>PVPA</i>	21.6	18.4	22.4	22.1	23.2	19.2	20.1	18.2	18.8
<i>VFR</i>	32.0	34.1	34.6	35.1	36.1	35.9	33.4	37.0	39.8
<i>BV</i>	45.8	46.5	41.5	41.0	39.6	44.2	46.0	43.1	39.1
<i>DV</i>	0.6	1.0	1.5	1.7	1.1	0.6	0.6	1.8	2.3
<i>Total</i>	100.0	100.0	100.0	100.0	100.0	100.0	100.0	100.0	100.0

Table 2.7 (a) Number of Visits by Sea by Type of Visitor 1985 - 2011

	1985	1986	1987	1988	1989	1990	1991	1992	1993
<i>PVPA</i>	209,660	172,769	149,517	119,874	110,710	114,610	91,480	70,357	89,823
<i>VFR</i>	31,707	28,287	32,531	28,860	30,300	30,399	37,749	37,090	36,381
<i>BV</i>	5,484	10,542	11,020	9,744	13,307	9,525	12,761	6,312	6,672
<i>DV</i>	16,376	18,922	19,762	18,167	20,605	14,502	10,466	9,061	9,198
<i>Total</i>	263,227	230,520	212,830	176,645	174,922	169,036	152,456	122,820	142,074
	1994	1995	1996	1997	1998	1999	2000	2001	2002
<i>PVPA</i>	97,094	96,206	103,706	116,089	115,797	120,180	112,720	64,052	79,719
<i>VFR</i>	37,914	32,194	30,190	25,378	38,845	50,126	48,590	57,934	69,726
<i>BV</i>	8,042	7,781	8,318	11,018	8,908	13,202	12,268	15,934	20,004
<i>DV</i>	10,745	9,372	7,733	8,581	5,418	4,453	8,660	8,011	6,924
<i>Total</i>	153,795	145,553	149,947	161,066	168,968	187,961	182,238	145,931	176,373
	2003	2004	2005	2006	2007	2008	2009	2010	2011
<i>PVPA</i>	77,990	89,595	78,921	76,105	91,327	72,197	76,002	79,950	78,634
<i>VFR</i>	74,256	63,626	54,730	55,897	68,282	57,572	58,376	62,462	63,470
<i>BV</i>	11,563	14,907	21,647	19,838	14,020	15,750	17,527	15,756	14,375
<i>DV</i>	6,052	5,677	4,132	2,591	1,677	981	2,561	2,905	4,605
<i>Total</i>	169,861	173,805	159,430	154,431	175,306	146,500	154,466	161,073	161,084

Table 2.7 (b) Visits by Sea by Type of Visitor (% of total visits by sea) 1985 - 2011

	1985	1986	1987	1988	1989	1990	1991	1992	1993
<i>PVPA</i>	79.6	74.9	70.3	67.9	63.3	67.8	60.0	57.3	63.2
<i>VFR</i>	12.0	12.3	15.3	16.3	17.3	18.0	24.8	30.2	25.6
<i>BV</i>	2.1	4.6	5.2	5.5	7.6	5.6	8.4	5.1	4.7
<i>DV</i>	6.2	8.2	9.3	10.3	11.8	8.6	6.9	7.4	6.5
<i>Total</i>	100.0	100.0	100.0	100.0	100.0	100.0	100.0	100.0	100.0
	1994	1995	1996	1997	1998	1999	2000	2001	2002
<i>PVPA</i>	63.1	66.1	69.2	72.1	68.5	63.9	61.9	43.9	45.2
<i>VFR</i>	24.7	22.1	20.1	15.8	23.0	26.7	26.7	39.7	39.5
<i>BV</i>	5.2	5.3	5.5	6.8	5.3	7.0	6.7	10.9	11.3
<i>DV</i>	7.0	6.4	5.2	5.3	3.2	2.4	4.8	5.5	3.9
<i>Total</i>	100.0	100.0	100.0	100.0	100.0	100.0	100.0	100.0	100.0
	2003	2004	2005	2006	2007	2008	2009	2010	2011
<i>PVPA</i>	45.9	51.5	49.5	49.3	52.1	49.3	49.2	49.6	48.8
<i>VFR</i>	43.7	36.6	34.3	36.2	39.0	39.3	37.8	38.8	39.4
<i>BV</i>	6.8	8.6	13.6	12.8	8.0	10.8	11.3	9.8	8.9
<i>DV</i>	3.6	3.3	2.6	1.7	1.0	0.7	1.7	1.8	2.9
<i>Total</i>	100.0	100.0	100.0	100.0	100.0	100.0	100.0	100.0	100.0

Table 2.8 (a) Total Visitor Expenditure by Type of Expenditure (£ millions) 2011

		<i>Travel to/ from the Island</i>	<i>Accomm- odation</i>	<i>Other</i>	<i>Total</i>
<i>All Visitors</i>	<i>Air</i>	18.2	8.9	17.8	44.9
	<i>Sea</i>	17.4	12.6	23.0	53.0
	<i>Total</i>	35.6	21.4	40.8	97.9
<u>of which:</u>					
<i>PVPA</i>	<i>Air</i>	2.7	4.5	4.5	11.8
	<i>Sea</i>	8.1	10.0	11.8	29.9
	<i>Total</i>	10.8	14.5	16.2	41.6
<i>VFR</i>	<i>Air</i>	6.6	0.0	7.5	14.1
	<i>Sea</i>	5.8	0.0	8.9	14.7
	<i>Total</i>	12.4	0.0	16.5	28.9
<i>BV</i>	<i>Air</i>	8.5	4.3	5.6	18.4
	<i>Sea</i>	3.2	2.6	2.1	7.9
	<i>Total</i>	11.7	6.9	7.7	26.3
<i>DV</i>	<i>Air</i>	0.4	0.0	0.1	0.6
	<i>Sea</i>	0.2	0.0	0.2	0.5
	<i>Total</i>	0.7	0.0	0.4	1.1

Table 2.8 (b) Average Expenditure by Type of Expenditure (£s) 2011

		<i>Travel to/ from the Island</i>	<i>Accomm- odation</i>	<i>Other</i>	<i>Total</i>
<i>All Visitors</i>	<i>Air</i>	131	64	128	323
	<i>Sea</i>	108	78	143	329
	<i>Total</i>	119	72	136	326
<u>of which:</u>					
<i>PVPA</i>	<i>Air</i>	105	174	172	452
	<i>Sea</i>	103	127	149	380
	<i>Total</i>	104	139	155	398
<i>VFR</i>	<i>Air</i>	119	0	137	256
	<i>Sea</i>	92	0	140	232
	<i>Total</i>	104	0	139	243
<i>BV</i>	<i>Air</i>	156	79	103	338
	<i>Sea</i>	225	179	148	552
	<i>Total</i>	170	100	112	383
<i>DV</i>	<i>Air</i>	141	0	45	186
	<i>Sea</i>	49	0	54	104
	<i>Total</i>	87	0	51	137

**Chart 2.2 Total Visitor Expenditure
at Constant (2011) Prices**

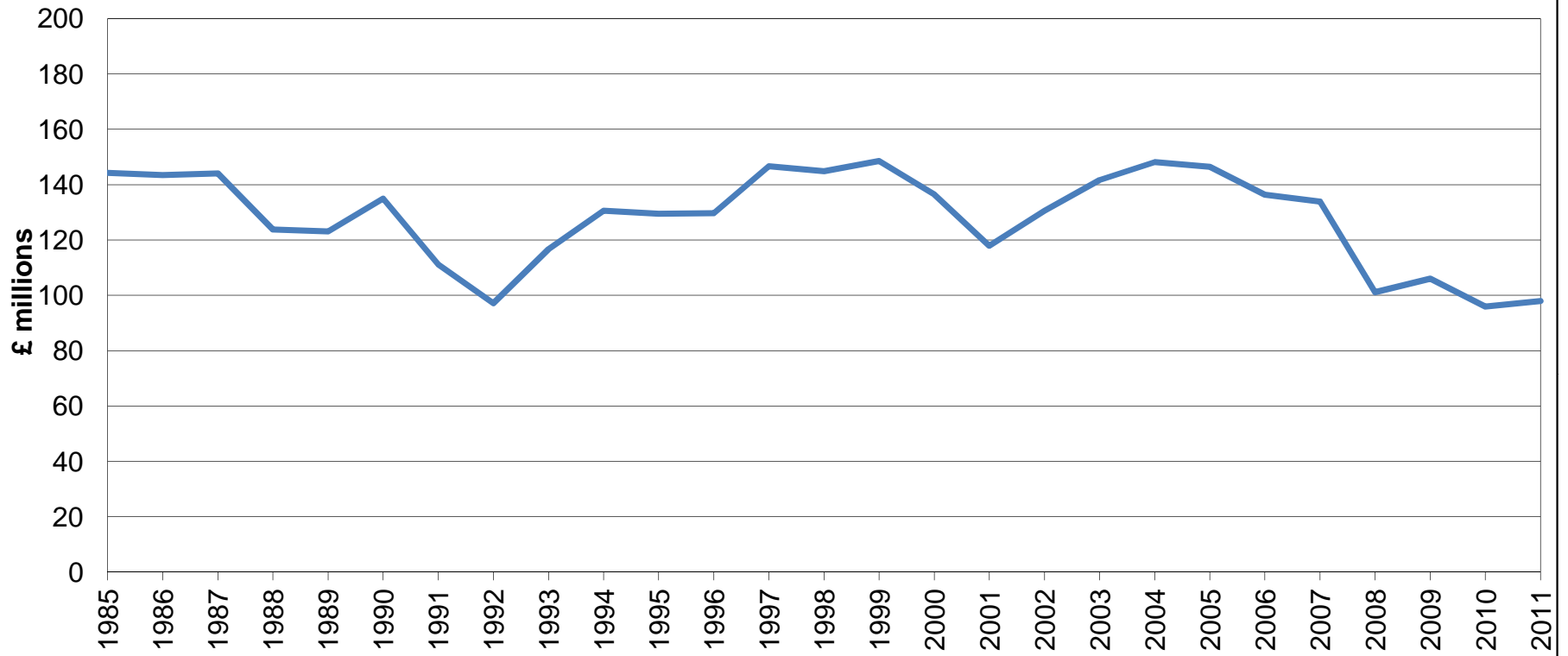


Table 2.9 Number of Bed Nights 2011

		<i>Average</i>	<i>Total</i>
<i>All Staying Visitors (exc. DV)</i>	<i>Air</i>	3.9	529,714
	<i>Sea</i>	6.1	950,096
	<i>Total</i>	5.1	1,479,810
<i>of which:</i>			
<i>PVPA</i>	<i>Air</i>	4.3	112,049
	<i>Sea</i>	5.2	408,897
	<i>Total</i>	5.0	520,946
<i>VFR</i>	<i>Air</i>	5.6	309,170
	<i>Sea</i>	7.1	450,637
	<i>Total</i>	6.4	759,807
<i>BV</i>	<i>Air</i>	2.0	108,494
	<i>Sea</i>	6.3	90,563
	<i>Total</i>	2.9	199,057

Table 2.10 (a) Area of Residence (All Visitors) (%) 2011

	<i>PVPA</i>	<i>VFR</i>	<i>BV</i>	<i>DV</i>	<i>All</i>
<i>England-North East</i>	4.6	5.0	2.3	2.8	4.1
<i>England-North West</i>	37.3	31.2	34.4	53.4	34.6
<i>England-Yorks/Humberside</i>	6.4	10.0	4.7	17.2	7.7
<i>England-Midlands</i>	12.8	9.8	11.4	6.1	11.1
<i>England-East Anglia</i>	1.5	1.7	0.2	0.1	1.2
<i>England-South East</i>	11.2	17.0	26.0	5.9	16.8
<i>England-South West</i>	5.7	3.6	4.5	0.3	4.4
<i>Scotland</i>	4.0	5.1	3.0	2.5	4.1
<i>N. Ireland</i>	2.3	3.4	3.8	1.6	3.1
<i>S. Ireland</i>	2.0	3.9	2.3	3.7	2.8
<i>Wales</i>	4.0	2.7	0.7	0.1	2.6
<i>Channel Islands</i>	0.0	0.0	1.6	0.0	0.4
<i>Other</i>	8.3	6.8	5.0	6.2	6.9
<i>Total</i>	100.0	100.0	100.0	100.0	100.0

Table 2.10 (b) Area of Residence (Visitors by Air) (%) 2011

	<i>PVPA</i>	<i>VFR</i>	<i>BV</i>	<i>DV</i>	<i>All</i>
<i>England-North East</i>	0.0	3.1	0.6	0.0	1.5
<i>England-North West</i>	45.3	29.0	32.9	57.4	34.2
<i>England-Yorks/Humberside</i>	0.8	5.7	2.7	0.0	3.5
<i>England-Midlands</i>	11.5	5.3	10.5	2.6	8.5
<i>England-East Anglia</i>	0.0	0.1	0.1	0.0	0.1
<i>England-South East</i>	13.6	27.6	30.4	11.2	25.9
<i>England-South West</i>	5.8	5.2	4.3	0.0	4.8
<i>Scotland</i>	2.5	4.1	2.5	2.7	3.1
<i>N. Ireland</i>	1.4	4.2	4.7	3.3	3.9
<i>S. Ireland</i>	2.8	6.8	2.8	7.9	4.5
<i>Wales</i>	7.5	1.2	0.6	0.0	2.0
<i>Channel Islands</i>	0.0	0.0	2.1	0.0	0.9
<i>Other</i>	8.7	7.5	5.8	14.9	7.2
<i>Total</i>	100.0	100.0	100.0	100.0	100.0

Table 2.10 (c) Area of Residence (Visitors by Sea) (%) 2011

	<i>PVPA</i>	<i>VFR</i>	<i>BV</i>	<i>DV</i>	<i>All</i>
<i>England-North East</i>	6.0	6.4	8.7	4.7	6.4
<i>England-North West</i>	34.8	32.9	40.3	50.8	35.0
<i>England-Yorks/Humberside</i>	8.1	13.4	12.1	28.6	11.2
<i>England-Midlands</i>	13.2	13.3	15.1	8.4	13.3
<i>England-East Anglia</i>	1.9	2.9	0.7	0.2	2.2
<i>England-South East</i>	10.4	8.6	9.3	2.5	9.4
<i>England-South West</i>	5.7	2.3	5.2	0.5	4.1
<i>Scotland</i>	4.5	5.8	4.8	2.4	5.0
<i>N. Ireland</i>	2.6	2.8	0.5	0.5	2.4
<i>S. Ireland</i>	1.7	1.5	0.3	0.9	1.5
<i>Wales</i>	2.9	3.9	1.0	0.1	3.0
<i>Channel Islands</i>	0.0	0.0	0.0	0.0	0.0
<i>Other</i>	8.2	6.1	2.2	0.5	6.6
<i>Total</i>	100.0	100.0	100.0	100.0	100.0

3. *Isle of Man Residents*

Table 3.1 Number of Trips by Residents by Type 2011

		<i>No.</i>	<i>% of Total Visitors</i>
<i>PVPA</i>	<i>Air</i>	90,340	25.9
	<i>Sea</i>	58,750	16.8
	<i>Total</i>	149,090	42.7
<i>VFR</i>	<i>Air</i>	79,297	22.7
	<i>Sea</i>	57,203	16.4
	<i>Total</i>	136,500	39.1
<i>BV</i>	<i>Air</i>	37,431	10.7
	<i>Sea</i>	13,407	3.8
	<i>Total</i>	50,838	14.6
<i>DV</i>	<i>Air</i>	5,132	1.5
	<i>Sea</i>	7,259	2.1
	<i>Total</i>	12,391	3.6
<i>Total</i>	<i>Air</i>	212,200	60.8
	<i>Sea</i>	136,619	39.2
	<i>Total</i>	348,819	100.0

Table 3.2 Number of Nights Off-Island by Type 2011

		<i>Average</i>	<i>Total</i>
<i>All Residents (exc. DT)</i>	<i>Air</i>	6.8	1,405,082
	<i>Sea</i>	8.4	1,092,781
	<i>Total</i>	7.4	2,497,863
<u><i>of which:</i></u>			
<i>PVPA</i>	<i>Air</i>	8.8	794,992
	<i>Sea</i>	7.7	452,375
	<i>Total</i>	8.4	1,247,367
<i>VFR</i>	<i>Air</i>	5.9	467,852
	<i>Sea</i>	8.5	486,226
	<i>Total</i>	7.0	954,078
<i>BV</i>	<i>Air</i>	3.8	142,238
	<i>Sea</i>	11.5	154,181
	<i>Total</i>	5.8	296,418

Table 3.3 (a) Main Destination of Residents (All Residents) (%) 2011

	<i>PVPA</i>	<i>VFR</i>	<i>BV</i>	<i>DV</i>	<i>All</i>
<i>England-North East</i>	1.3	3.4	2.6	0.5	2.2
<i>England-North West</i>	30.1	35.2	25.0	94.7	33.7
<i>England-Yorks/Humberside</i>	3.1	6.9	3.7	0.5	4.6
<i>England-Midlands</i>	5.3	11.9	7.4	1.2	8.0
<i>England-East Anglia</i>	0.6	0.8	0.1	0.0	0.6
<i>England-South East</i>	7.9	13.8	29.9	0.0	13.1
<i>England-South West</i>	3.7	5.5	3.2	0.3	4.2
<i>Scotland</i>	4.4	5.4	4.7	0.1	4.7
<i>N. Ireland</i>	0.9	4.6	4.0	1.0	2.8
<i>S. Ireland</i>	1.4	4.1	2.0	0.8	2.5
<i>Wales</i>	1.6	2.3	0.7	0.1	1.7
<i>Channel Islands</i>	0.0	0.0	1.2	0.0	0.2
<i>Other</i>	39.7	6.1	15.4	0.7	21.6
<i>Total</i>	100.0	100.0	100.0	100.0	100.0

Table 3.3 (b) Main Destination of Residents (Air) (%) 2011

	<i>PVPA</i>	<i>VFR</i>	<i>BV</i>	<i>DV</i>	<i>All</i>
<i>England-North East</i>	0.1	1.8	1.0	1.3	1.0
<i>England-North West</i>	21.1	35.6	18.1	94.6	27.8
<i>England-Yorks/Humberside</i>	1.8	3.5	1.2	0.0	2.3
<i>England-Midlands</i>	4.6	8.9	6.8	0.0	6.5
<i>England-East Anglia</i>	0.3	0.2	0.1	0.0	0.2
<i>England-South East</i>	9.6	19.0	35.8	0.0	17.5
<i>England-South West</i>	1.7	6.9	3.3	0.0	3.9
<i>Scotland</i>	2.4	3.6	4.1	0.0	3.1
<i>N. Ireland</i>	1.3	6.5	5.2	2.1	4.0
<i>S. Ireland</i>	1.9	5.5	2.8	2.0	3.4
<i>Wales</i>	0.4	0.5	0.5	0.0	0.5
<i>Channel Islands</i>	0.1	0.0	1.7	0.0	0.3
<i>Other</i>	54.8	7.9	19.3	0.0	29.7
<i>Total</i>	100.0	100.0	100.0	100.0	100.0

Table 3.3 (c) Main Destination of Residents (Sea) (%) 2011

	<i>PVPA</i>	<i>VFR</i>	<i>BV</i>	<i>DV</i>	<i>All</i>
<i>England-North East</i>	3.0	5.5	7.0	0.0	4.3
<i>England-North West</i>	44.1	34.6	44.4	94.8	42.9
<i>England-Yorks/Humberside</i>	5.1	11.7	10.6	0.8	8.2
<i>England-Midlands</i>	6.3	16.2	8.9	2.1	10.5
<i>England-East Anglia</i>	1.0	1.6	0.1	0.0	1.1
<i>England-South East</i>	5.4	6.7	13.7	0.0	6.4
<i>England-South West</i>	6.7	3.4	2.8	0.5	4.6
<i>Scotland</i>	7.5	7.9	6.4	0.1	7.2
<i>N. Ireland</i>	0.4	1.9	0.4	0.2	1.0
<i>S. Ireland</i>	0.6	2.1	0.1	0.0	1.2
<i>Wales</i>	3.5	4.7	1.3	0.2	3.6
<i>Channel Islands</i>	0.0	0.0	0.0	0.0	0.0
<i>Other</i>	16.4	3.7	4.2	1.2	9.1
<i>Total</i>	100.0	100.0	100.0	100.0	100.0

Appendices

APPENDIX 1. Sample Size by Category of Passenger and Quarter

	RES	PVPA	VFR	BV	DV	Total
January to April	2,280	228	704	430	40	3,682
May to June	854	364	386	146	19	1,769
July to September	1,119	430	576	240	20	2,385
October to December	1,100	90	356	216	8	1,770
Total	5,353	1,112	2,022	1,032	87	9,606

APPENDIX 2. Notes on Survey Methodology

1. Up to 1997, Passenger Survey reports applied results from the survey to the overall number of scheduled arrivals, despite the fact that for reasons of practicality passengers are only interviewed on departure. Since 1997, the first year in which comprehensive and reliable data were available for departure figures, these have been used as the basis for analysis. This change, whilst ensuring greater accuracy, makes little difference to the overall results.
2. The information contained in this report relates only to scheduled departures. It does not include unscheduled departures such as some charter flights, cruise ship passengers and pleasure craft.
3. Some percentages have been rounded and so may not total 100 in every case.
4. Cases are selected using a complex sampling design. All results are re-weighted to account for the different numbers of passengers travelling by each route and mode of travel from the Island. The survey design also corrects for any bias which may otherwise be introduced by the different length of interview completed by different categories of passenger. As with any survey of this type, results are subject to random error variation.
5. Data are collected from departing passengers by way of interviewer-led schedule at Ronaldsway Airport and Douglas Harbour.

APPENDIX 3. Passenger Survey Questionnaire

1 Interviewer

2 Shift Code

3 May I ask you a few questions for the Island's Passenger Survey?
The interview should only take one or two minutes.

- 1 Accept
- 2 Decline

4 What is your Destination

- | | |
|--------------------|------------------|
| 1 Air-Belfast | 21 Sea-Dublin |
| 2 Air-Birmingham | 24 Sea-Heysham |
| 3 Air-Blackpool | 25 Sea-Liverpool |
| 4 Air-Bristol | 26 Sea- Other |
| 6 Air-Edinburgh | |
| 7 Air-Dublin | |
| 8 Air-Glasgow | |
| 9 Air-Leeds | |
| 10 Air-Liverpool | |
| 11 Air-Gatwick | |
| 12 Air-Luton | |
| 13 Air-Manchester | |
| 14 Air-Newcastle | |
| 15 Air-Southampton | |
| 16 Air-London City | |
| 17 Air-Jersey | |
| 18 Air-Other | |
| 20 Sea-Belfast | |

5 How are you travelling?

- 1 Foot Passenger
- 2 With a Vehicle/Bike/Coach

6 Do you live in the Isle of Man?

- 1 Yes
- 2 No

7 Was your visit to the Island in connection with any of these Events?

- 1 Yes
- 2 No

8 How many of you are travelling together?

Answer:

9 How many of your group are:-

- 0-15
- 16-30
- 31-45
- 46-60
- Over 60

10 Is this trip in connection with your work?

- 1 Yes
- 2 No

11 How many nights stay does this trip include?

Answer:

12 Mainly in paid accommodation (include Homestay) or with friends or relatives?

- 1 In paid accommodation
- 2 With friends/relatives

13 What is the name of your accommodation?

14 Where do you live?

- 1 England-North East
- 2 England-North West
- 3 England-Yorks/Humberside
- 4 England-Midlands
- 5 England-East Anglia
- 6 England-South East
- 7 England-South West
- 8 Scotland
- 9 N. Ireland
- 10 S. Ireland
- 11 Wales
- 12 Channel Islands
- 13 Other

15 What is your main destination?

- 1 England-North East
- 2 England-North West
- 3 England-Yorks/Humberside
- 4 England-Midlands
- 5 England-East Anglia
- 6 England-South East
- 7 England-South West
- 8 Scotland
- 9 N. Ireland
- 10 S. Ireland
- 11 Wales
- 12 Channel Islands
- 13 Other

16 Are you on a package trip?

(Yes if one payment made for travel and accommodation)

- 1 Yes
- 2 No

17 What was the cost of your accommodation?

Answer:

18 How many people does this cover?

Answer:

19 What was the cost of your travel to and from the Island?
(Between IOM and UK/Eire only)

Answer:

20 How many is this for?

Answer:

21 How much did the package cost?

Answer:

22 How many does this cover?

Answer:

23 How much have you spent whilst in the island?

Answer:

24 What would you estimate to be the total cost of this trip?

Answer:

25 How many does this cover?

Answer:

26 How many is this for?

Answer:

27 Thank you for your help

ADDITIONAL PUBLICATIONS AND FURTHER INFORMATION

The Isle of Man Passenger Survey Annual Report 2011 is one of a number of publications compiled by the Economic Affairs Division of the Isle of Man Treasury (free of charge where no price is given):

Isle of Man Census Report 2006 Volume I
Isle of Man Census Report 2006 Volume II (£8.00)
Isle of Man Census Report 2011 (available end April 2012)
Isle of Man National Income 2009/10
Isle of Man Digest of Economic and Social Statistics 2012 (£3.50)
Isle of Man Earnings Survey 2011
Isle of Man General Index of Retail Prices (Monthly Report)
Isle of Man Job Market Statistics (Monthly Report)
Isle of Man Summer Passenger Arrivals 1887 to the present

All unpriced publications and any additional information may be obtained by contacting:

Economic Affairs Division,
Isle of Man Treasury,
Illiam Dhone House,
2 Circular Road,
Douglas,
Isle of Man.
IM1 1PQ

Telephone: +44 1624 685741
Fax: +44 1624 685747
Email: economics@gov.im
web: www.gov.im/treasury/economic

All priced publications may be purchased from:

Tynwald Library,
Government Office,
Bucks Road,
Douglas,
Isle of Man.

Telephone. +44 1624 685520
Fax: +44 1624 685522
Email: library@tynwald.org.im



This document can be provided in large print or audio tape on request

Copyright
Isle of Man Government

ISBN 978-1-904869-33-7

Printed by Isle of Man Government
Printing Services