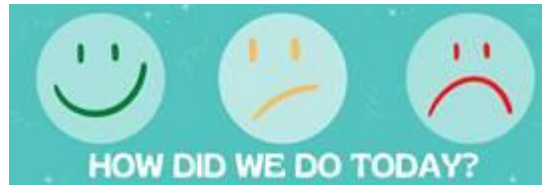


IN THE KNOW: Keeping Staff Informed

Volume 19 (18) May 2024

Struggling to access any of the articles in the bulletin today? Some may be available via [Athens](#) (for eligible library members), you can check [using Google Scholar](#). Article not available via Athens or you don't have a login? [Request the article](#) from the library! Not a member yet? You can [join here](#).

Check out our library [website](#) and our [Twitter](#) for details of all our services, facilities and any forthcoming events.



Do you have feedback about library resources, staff, or spaces? Share it here: <https://www.surveymonkey.com/r/KDFeedback>

In this issue:

IN THE SPOTLIGHT

MANX SKEET

STAFF HEALTH & WELLBEING

HOT OFF THE PRESS

PUBLIC HEALTH

EVIDENCE BASED PRACTICE

SOCIAL AND COMMUNITY CARE

HEALTH MANAGEMENT

PATIENT INFORMATION

LIBRARY BITS AND PIECES

IN THE SPOTLIGHT

[What is happening to life expectancy in England?](#)

[A Systematic Review of Patient Regret After Surgery- A Common Phenomenon in Many Specialties but Rare Within Gender-Affirmation Surgery](#)

STAFF HEALTH & WELLBEING

[Changes in information seeking patterns of medical students in the social media and artificial intelligence age: preliminary findings.](#)

[Warning after tea towel tumble dryer fire](#)

[Struggling families should consider claiming benefits, says minister](#)

[Fire Service warn public not to drink and dive](#)

[UCM degree, postgrad and undergrad courses event in June](#)

[Pomegranate recipes](#)

[26 Wholesome Work Lunches You Can Pack In The Morning](#)

[Countdown to Tower of Refuge walk](#)

[Lock your car to defeat opportunist thieves](#)

Useful links

[Patient.co.uk](#)

[NHS Website](#)

[Mental Health Foundation](#)

[World Health Organisation](#)



MANX SKEET

['Specialist training' for teachers delivering Sex Ed classes](#)

[Average time to answer 999 call remains at 1.5 seconds in March](#)

[Changes at prison after deaths, department says](#)

[Regulator finds Manx Telecom not in breach of obligations following incident that affected 999 calls](#)

[Missed opportunity in inmate's care, inquest finds](#)

[Women's health conference held by Manx Care](#)

[Daddy Baby Care classes available from next month](#)

[Manx Care issue signposting reminder for services](#)

[Keys to consider possible law banning smoking](#)

[Help available for women experiencing perinatal mental health problems](#)

[Heart problems found in twelve who attend charity screening](#)

[GP practice issues reminder after ten patients in one morning fail to turn up](#)

[Majority of Manx Care survey responses say services 'good' or 'very good'](#)

[MHK wants cannabis update](#)

[MHK hopes to secure provision of free period products](#)

[Roads access around Noble's question to be put to MHK next week](#)

[Air ambulance involved in Ballaugh collision response](#)

[Manx Care doesn't have treatment figures for opioid addicts](#)

[Doctor issues reminder to protect against sun](#)

HOT OFF THE PRESS

BBC News

[Covid inquiry to hear evidence in NI this week](#)

[Lib Dems call for access to named GP for over-70s](#)

[How is the King's cancer treatment going?](#)

[Scientists invent new way to detect skin cancer](#)

[Special school pupils 'tortured' in calming rooms](#)

[NHS England to stress biological sex in ward allocations](#)

[Patch to protect against measles shows promise](#)

[Disabled people face end to regular PIP benefits](#)

[How 'vampire facials' infected three women with HIV](#)

[Doctor assumed disabled woman did not have sex](#)

[Ministers accept three-month deadline for blood scheme](#)

[GP prescribing opioids in 'high amounts' needs to improve](#)

[Online clinic gave teen dangerous hormone dose](#)

[Scientists work to make healthier white bread](#)

Useful Health Links

[NHS Website: A-Z of health conditions](#)

[NHS Website](#)

[Check NHS standards near you](#)

[Cancer Help UK](#)

[British Heart Foundation](#)

[Health and Care Professions Council](#)

[Mental Health Foundation](#)

[General Medical Council](#)

[Nursing and Midwifery Council](#)

[Care Quality Commission](#)

[NICE](#)

[NHS Scotland](#)

[Health in Wales](#)

[NI Direct](#)

[Clinical trials information](#)

[Diabetes UK](#)

[British Lung Foundation](#)

[National Obesity Forum](#)

Critical Thinking

Do you believe everything you read? Is there truth behind the headlines? Why does false information spread so fast on social media? What can you do to make sure you don't get taken in? Start by looking up the stories on websites such as the ones below:

[BBC Reality Check](#)

[Full fact](#)

[Ferret Fact Service](#)

[British Heart Foundation – Behind the headlines](#)

Misinformation

Do you keep a look out for misinformation circulating online? Do you know the impact it could have on patients? How do you counter it?

[Pattern hair loss and health care professionals: How well are we connecting with our audience?](#)

[Misinformation Persists in Complementary Health: Evaluating the Reliability and Quality of YouTube-Based Information on the Use of Acupuncture for Chronic Pain.](#)

[Science L.I.A.R.S.:A Game to Combat Misinformation](#)

Bulletins

(click to open)

[Bulletin for clinical commissioning groups \(CCGs\)](#)

[Chief Nursing Bulletin](#)

[Healthcare Science Bulletin](#)

[Compassion in Practice strategy and 6Cs Live!](#)

[Liaison and Diversion Bulletin](#)

[Pharmacy and Medicines Bulletin](#)

[Primary Care Bulletin](#)

[Specialised Commissioning Stakeholder Bulletin](#)

[Revalidation Matters](#)

[Liaison and Diversion Bulletin](#)

[Specialised Commissioning Stakeholder Bulletin](#)



PUBLIC HEALTH

Health e-News Bulletin/NLH Public Health Newsletter

Adult Protection & Safeguarding Domestic Violence

[A qualitative study of adult protection procedures: threshold screening of new referrals by designated adult safeguarding practitioners](#)

[Restorative justice in safeguarding adults with hate crime and discriminatory abuse: exploring the evidence](#)

[How to handle the academic literature of sex offenders? A post-publication protection mechanism is needed](#)

Addiction

[Alcohol consumption and accelerated biological ageing in middle-aged and older people: A longitudinal study from two cohorts](#)

[The surge of bromazolam-related fatalities replacing other novel designer benzodiazepines-related fatalities in San Francisco](#)

[Evaluating the impact of minimum unit pricing \(MUP\) on alcohol sales after 3 years of implementation in Scotland: A controlled interrupted time-series study](#)

[Action demanded on alcohol as deaths hit record levels](#)



Allergies

[Clovibactin: Discovery and antimicrobial mechanism of action](#)

[Genetic links between atopy, allergy, and alopecia areata: insights from a Mendelian randomization study](#)

[Neutrophil-driven and interleukin-36 \$\gamma\$ -associated ocular surface inflammation in chronic Stevens–Johnson syndrome](#)

[Environmental exposures drive the development of allergic diseases](#)



Cardiovascular Disease

[Aspirin hypersensitivity: a practical guide for cardiologists](#)

[A Novel Agent Fails to Improve Outcomes in Diabetic Cardiomyopathy](#)

[Screening for Helicobacter pylori infection in patients with cardiovascular and gastrointestinal disease](#)

[Stress and cardiovascular disease: an update](#)

[More Data Support Semaglutide for Obesity-Related HFpEF, Regardless of Diabetes Diagnosis](#)



Complementary Medicine/Alternative Medicine

[Neuroprotective effect of acetoxypachydiol against oxidative stress through activation of the Keap1-Nrf2/HO-1 pathway](#)

[Ginsenoside compound K induces ferroptosis via the FOXO pathway in liver cancer cells](#)

[An omega-6 fatty acid may reduce the risk for bipolar disorder](#)

[Anticancer properties and metabolomic profiling of Shorea roxburghii extracts toward gastrointestinal cancer cell lines](#)

Critical Care

[Identifying mitigation strategies of comprehensive health centers against dust hazard: a qualitative study in Iran](#)

[Is a randomised controlled trial of take home naloxone distributed in emergency settings likely to be feasible and acceptable? Findings from a UK qualitative study exploring perspectives of people who use opioids and emergency services staff](#)

[Exploring factors influencing time from dispatch to unit availability according to the transport decision in the pre-hospital setting: an exploratory study](#)

[Association of inflammatory biomarkers with overall survival in burn patients: a systematic review and meta-analysis](#)

Dementia

[Use of headphones for the delivery of music programs for people with dementia in long-term care homes: a scoping review protocol](#)

[Postoperative Delirium and the Older Adult: Untangling the Confusion](#)

Dental



[Covid-19 hotlines, helplines and call centers: a systematic review of characteristics, challenges and lessons learned](#)

[The effectiveness of water jet flossing and interdental flossing for oral hygiene in orthodontic patients with fixed appliances: a randomized clinical trial](#)

[Accuracy comparison of single- and double-sleeve endodontic guides for fiber post removal](#)

Diabetes

[Experimental drug shields pancreas from type 1 diabetes attack](#)

[Adding AI to artificial pancreas enhances efficiency, study finds](#)



Diet, Nutrition and Obesity

[The past, present, and future of behavioral obesity treatment](#)

[The obesity paradox in younger adult patients with sepsis: analysis of the MIMIC-IV database](#)

[Vitamin D alters mouse gut bacteria to give better cancer immunity](#)

[Breakthrough in brown fat research: Researchers have found brown fat's 'off-switch'](#)



Digital Health Technology

[Evaluation of Patient Education Materials From Large-Language Artificial Intelligence Models on Carpal Tunnel Release.](#)

[NHS algorithm to enable patients to issue their own sick notes](#)

[Digital Switchover paused after failure of personal alarms led to deaths](#)



End of Life Care

[Cancer-related fatigue and activities of daily living: lessons learned from the COVID-19 pandemic](#)

[Appropriate use of medication among home care adult cancer patients at end of life: a retrospective observational study](#)

[Development and validation of impact of early integration of palliative care and oncology\(IEI PCO\) questionnaire: a survey for medical oncologists and nurses](#)

[Rural healthcare professionals' participation in Medical Assistance in Dying \(MAiD\): beyond a binary decision](#)



Immunisation and Infection

[Nanopore sequencing of influenza A and B in Oxfordshire and the United Kingdom, 2022-23](#)

[The requirement to move towards standardisation of wastewater sampling](#)

[Short Versus Prolonged Duration of Therapy for Pseudomonas aeruginosa Bacteremia: A Systematic Review and Meta-analysis](#)

Inclusion and Diversity

[Health inequalities in 2040: current and projected patterns of illness by deprivation in England](#)

Learning Disability

[Handwriting difficulties in children with dyslexia: Poorer legibility in dictation and alphabet tasks, slowness in the alphabet task](#)

[Investigating low intelligence stereotype threat in adults with developmental dyslexia](#)

Medical Education

[A common curriculum in obstetrics and gynecology for medical students globally](#)

[From corners to community: exploring medical students' sense of belonging through co-creation in clinical learning](#)

[Physician engagement in reproductive health advocacy: findings from a mixed methods evaluation of a leadership and advocacy program](#)

Mental Health



[A transdiagnostic group exercise intervention for mental health outpatients in Germany \(ImPuls\): results of a pragmatic, multisite, block-randomised, phase 3 controlled trial](#)

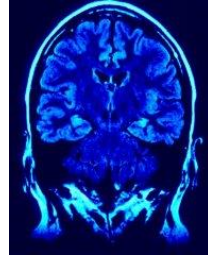
[Gaza](#)

[Engaging in healthy life activities is inherently valuable](#)

[Air pollution and depression linked with heart disease deaths in middle-aged adults](#)

[Psychosis with use of amphetamine drugs, methylphenidate and atomoxetine in adolescent and adults](#)

[Healthy lifestyle and the risk of depression recurrence requiring hospitalisation and mortality among adults with pre-existing depression: a prospective cohort study](#)



Neurology

[Intrathecal baclofen efficacy for managing motor function and spasticity severity in patients with cerebral palsy: a systematic review and meta-analysis](#)

[A case of NMDAR Encephalitis with muscular pain as the main presentation](#)

[An observational time-series study on the behavioral effects of adjunctive artisanal cannabidiol use by adults with treatment resistant epilepsies](#)

[Protocol for combined N-of-1 trials to assess cerebellar neurostimulation for movement disorders in children and young adults with dyskinetic cerebral palsy](#)

Obstetrics

[Which antiseptic to use for a Caesarean section? A systematic review and network meta-analysis of randomised controlled trials](#)

[Association between adenomyosis and placenta accreta and mediation effect of assisted reproductive technology on the association: A nationwide observational study](#)

[Potential novel role of the human amniotic membrane as a sustainable hemostat](#)

[Osseous metaplasia of endometrium: An unusual cause of secondary infertility](#)

Oncology



[Initiatives to target cancer care and research in Africa](#)

[Using the tumour microenvironment to improve therapy efficacy](#)

[Cancer incidence, treatment, and survival in the prison population compared with the general population in England: a population-based, matched cohort study](#)

[Bowel Cancer UK's behavioural change campaign](#)

[When leukaemia masquerades: the hidden syphilis diagnosis](#)

[Considerations for using potential surrogate endpoints in cancer screening trials](#)

Ophthalmology

[Clinical features and comprehensive treatment of persistent corneal epithelial dysfunction after cataract surgery](#)

[Choroidal manifestations of non-ocular sarcoidosis: an enhanced depth imaging OCT study](#)

[Comparatively analysing the postoperative optical performance of different intraocular lenses: a prospective observational study](#)

[Isolated ectopia lentis with partial anterior dislocation and pupillary block: a case report](#)



Paediatrics

[Ravulizumab facilitates reduced burden of vascular access, a major benefit in paediatric atypical haemolytic uraemic syndrome](#)

[Quality of melatonin use in children and adolescents: findings from a UK clinical audit](#)

[Perfect storm: emotionally based school avoidance in the post-COVID-19 pandemic context](#)

Pain Medicine

[A Personalized Mediterranean Diet Improves Pain and Quality of Life in Patients with Fibromyalgia](#)

[Relation between heart rate variability and spectral analysis of electroencephalogram in chronic neuropathic pain patients](#)

[Presence of endometriosis and chronic overlapping pain conditions negatively impacts the pain experience in women with chronic pelvic-abdominal pain: A cross-sectional survey](#)

Patient Experience

[Mixed methods assessment of the influence of demographics on medical advice of ChatGPT](#)

[A Co-design Approach to Support Oral Anticancer Medication Use in Breast Cancer](#)

[Outpatient oncology settings: the distinctive contribution of supportive design to patient experience and wellbeing](#)



Pharmacology

[Concomitant Use of Selective Serotonin Reuptake Inhibitors With Oral Anticoagulants and Risk of Major Bleeding](#)

[Assessment and treatment of reflux-like symptoms in the community: a multidisciplinary perspective](#)

[Ceftriaxone intramuscular injection for Neisseria gonorrhoeae – updated SPS PGD template](#)

[DTB Select: Prenatal use of antiepileptic drugs and childhood psychiatric disorders](#)

[Company presents data from LEVEL UP study comparing upadacitinib to dupilumab in the treatment of atopic dermatitis](#)

[Drug Safety Update - Finasteride: reminder of the risk psychiatric side effects and of sexual side effects \(which may persist after discontinuation of treatment\)](#)

Primary Care

[Hyperhidrosis: assessment and management in general practice](#)

[Medicines shortages: GPs forced to prescribe second-choice drugs while epilepsy patients report switch-induced seizures](#)

[GPs having to travel 'from Cumbria to Cornwall' to secure locum shifts](#)

[Lib Dems call for patients over 70 to see same GP at every appointment](#)

[UK set to lose measles-free status again after surge in cases](#)



Seniors and Aging

[How Does Statin Use Affect All-Cause Mortality in Nursing Home Patients With and Without Dementia?](#)

[New research sheds light on the weakening immune response observed in older adults](#)

[Researchers suggest expanding health equity by including nursing home residents in clinical trials](#)

[Brain function of older adults catching up with younger generations, finds study](#)



Sexual Health

[Experiences with and unmet needs for medication abortion support: A qualitative study with US abortion support providers](#)

[Medication abortion for adolescents in the United States: Strengthening the role of pediatric primary care providers](#)

[Can someone be both pro-life and pro-choice? Results from a national survey of US adults](#)

[Copper Intrauterine Device \(Cu-IUD\) – updated PGD template](#)

[Achieving more equitable access to assisted reproduction](#)

Sleep Medicine

[Dissecting the genetic and causal relationship between sleep-related traits and common brain disorders](#)

[Predominant cardiac sympathetic modulation during wake and sleep in patients with Rett syndrome](#)

[Dysfunctional Beliefs and Attitudes about Sleep-6 \(DBAS-6\): Data-driven Shortened Version from a Machine Learning Approach](#)

[Association of past and current sleep duration with structural brain differences: a large population-based study from the UK Biobank](#)



Sports Medicine/Fitness

[Injury Incidence and Injury Period Prevalence in Underwater Hockey: A Retrospective Study](#)

[Ultra-Cycling–Past, Present, Future: A Narrative Review](#)

[Ligament injury of the elbow: an up-to-date review](#)

[Current concept of hip arthroscopy in patients with osteoarthritis: is it effective as a hip preservation surgery?](#)

Surgery

[Robotic thoracic surgery using the single-port robotic system: Initial experience with more than 100 cases](#)

[Bigger pies, bigger slices: Increased hospitalization costs for lung transplantation recipients in the non–donation service area allocation era](#)

[Long-term outcomes after recurrent acute thoracic aortic dissection: Insights from the International Registry of Aortic Dissection](#)

[Surgical versus Transcatheter Aortic Valve Replacement in Low Risk Medicare Beneficiaries](#)

Vaping/Smoking



[On the path to ending smoking: using new funding](#)

[Cytisine for smoking cessation](#)

[Will Australia's tightened prescription system reduce nicotine vaping among young people?](#)

[UK tobacco and vapes bill one step closer](#)

[Trastuzumab deruxtecan versus treatment of physician's choice in patients with HER2-positive metastatic breast cancer \(DESTINY-Breast02\): patient-reported outcomes from a randomised, open-label, multicentre, phase 3 trial](#)

World Health Organisation

[WHO Bulletin Vol 102\(5\)](#)

[Governments near agreement on package of amendments to the International Health Regulations \(2005\)](#)

[Statement on the antigen composition of COVID-19 vaccines](#)

Wound Management

[Glycopeptide-based Multifunctional Nanofibrous Hydrogel that Facilitates the Healing of Diabetic Wounds Infected with Methicillin-resistant Staphylococcus aureus](#)

[Tele-expertise assessment of chronic wounds by advanced practice dermatology nurses](#)

[Management of the Difficult Stoma](#)

SOCIAL AND COMMUNITY CARE

[Are social workers stigmatised for mental health diagnoses?](#)

[Labour still committed to cap on care costs, shadow minister tells sector leaders](#)

[Recognising and responding to shame in child protection: key practice points](#)

[International recruitment to adult social care: a guide for councils](#)

[Co-production and engagement with communities as a solution to reducing health inequalities](#)

[Axing leadership training scheme risks undermining support for social workers, warn PSWs](#)

[Government proposes disability benefits overhaul in face of 'spiralling' caseload and costs](#)

[Reform Mental Health Act and implement LPS: new ADASS president's message to next government](#)

[Increasing qualification levels, linked to pay, under consideration in adult social care workforce strategy](#)

['Things have gone backwards for parents with learning disabilities', says BASW officer](#)

[DCS turnover rises for third consecutive year on back of high number of interim appointments](#)

Key Resources

[e-Learning](#)

[Research Register for Social Care](#)

[Social Care Online](#)

[Social Care Research Ethics Committee](#)

HEALTH MANAGEMENT

How influential is public health withing local health systems

A focus on adolescent substance use in Europe, central Asia and Canada. Health Behaviour in School-aged Children international report from the 2021/2022 survey.

Are UK health systems dementia ready? Comparing dementia policy across the four nations of the UK

Excellence through equality: anti-racism as a quality improvement tool

Addressing the leading risk factors for ill health – supporting local government to do more

Be well, care well

Changes to regulations relating to the Care Quality Commission

Getting the best out of the new world of remote and digital general practice

Investigation report: nutrition management of acutely unwell patients in acute medical units

Siloed, unsupported and hindered – the reality of innovation in the NHS and social care

Which technologies offer the biggest opportunities to save time in the NHS?

Not in school: the mental health barriers to school attendance

A step change: improving delivery of the Disabled Facilities Grant
NHS Constitution: 10 year review

Which technologies offer the biggest opportunities to save time in the NHS?

Not in school: the mental health barriers to school attendance

Escaping war, becoming a doctor and practising compassionate leadership

An essential part of the hospice: a report into the role of the Men's Sheds in hospices

Pharmacy: what people want

Futureproofing healthcare skills

What health and care need from the next government: adult social care

BMJ Evidence Updates

[Inequalities in birth before arrival at hospital in South West England: a multimethods study of neonatal hypothermia and emergency medical services call-handler advice](#)

[Healthcare and economic cost burden of emergency medical services treated non-traumatic shock using a population-based cohort in Victoria, Australia](#)

[Functional outcomes of bowel resection versus shaving or disc excision of colorectal endometriosis: a systematic review protocol](#)

[Maternal positional therapy for fetal growth and customised birth weight centile benefit in a Bayesian reanalysis of a double-blind, sham-controlled, randomised clinical trial](#)

[Learning motivation and self-assessment in health economics: a survey on overconfidence in healthcare providers](#)

[Recovery duration and concussion severity in sport- and non-sport-related concussion among Pac-12 collegiate athletes: a retrospective cohort study](#)

[Association between accelerometer-derived physical activity and depression: a cross-sectional study using isomorphous substitution analysis](#)

[Maternity healthcare professionals experiences of supporting women in decision-making for labour and birth: a qualitative study](#)

[Trade-offs between overall survival and side effects in the treatment of metastatic breast cancer: eliciting preferences of patients with primary and metastatic breast cancer using a discrete choice experiment](#)

[Study protocol to assess aflatoxin M1 health risks versus benefits of dairy consumption in Ethiopian children: an epidemiological trial and risk-benefit analysis](#)

[Complicated penetrating foreign body neck injury](#)

[Clinical and neuroradiographic features of fentanyl inhalation-induced leukoencephalopathy](#)

[Efficacy and safety of seven Chinese patent medicines combined with conventional triple/quadruple therapy for Helicobacter pylori-positive peptic ulcers: a systematic review and network meta-analysis](#)

[Evaluation of the early use of norepinephrine in major abdominal surgery on medical and surgical postoperative complications: study protocol for a randomised controlled trial \(EPON STUDY\)](#)

[COVID-19 vaccine coverage, determinants and inequity amongst refugees and migrants in Pakistan: a cross-sectional study](#)

[Frequency of self-directed dying in the Netherlands: research protocol of a cross-sectional mixed-methods study](#)

[Cost-effectiveness of methenamine hippurate compared with antibiotic prophylaxis for the management of recurrent urinary tract infections in secondary care: a multicentre, open-label, randomised, non-inferiority trial](#)

[Severity and impact of digestive impairment perceived by patients with systemic sclerosis: a cross-sectional study](#)

[Financial incentive interventions for smoking cessation among Chinese smokers: study protocol for a cluster randomised controlled trial](#)

[SUPRAMAX-study: supramaximal resection versus maximal resection for glioblastoma patients: study protocol for an international multicentre prospective cohort study \(ENCRAM 2201\)](#)

[Clinician and parent views on urine collection in precontinent children in the UK: a qualitative interview study](#)

[Liver fat as a dietary target by Chinese Medical Nutrition Therapy \(CMNT\) diet for treating type 2 diabetes with non-alcoholic fatty liver disease: study protocol for a randomised controlled trial](#)

[Characteristics of patients who seek medical attention for headache and those who do not: cross-sectional survey and linked medical claims data analysis in Japan](#)

[Outcome measures for children with speech sound disorder: an umbrella review](#)

[What is the ideal time to begin tapering opioid agonist treatment? A protocol for a retrospective population-based comparative effectiveness study in British Columbia, Canada](#)

[Trends in outcomes used to measure the effectiveness of UK-based support interventions and services targeted at adults with experience of domestic and sexual violence and abuse: a scoping review](#)

[Life skills and reproductive health empowerment intervention for newly married women and their families to reduce unintended pregnancy in India: protocol for the TARANG cluster randomised controlled trial](#)

[Risk of cardiovascular diseases among young adults: a cross-sectional study in Malaysia](#)

[Air leak test in the Paediatric Intensive Care Unit \(ALTIPICU\): rationale and protocol for a prospective multicentre observational study](#)

[Repurposing of dextromethorphan as an adjunct therapy in patients with major depressive disorder: a randomised, group sequential adaptive design, controlled clinical trial protocol](#)

[Carbon footprint of healthcare systems: a systematic review of evidence and methods](#)



Cochrane

Treatments to reduce alcohol use during pregnancy

Medicine that kills bacteria (antibiotics) or surgery: which works better to treat appendicitis?

Angiotensin-converting-enzyme inhibitors and angiotensin receptor blockers for preventing the progression of diabetic kidney disease

Can injection of platelet-rich plasma in the womb or ovaries of infertile women undergoing assisted reproduction help them to become pregnant?

Does respiratory syncytial virus (RSV) vaccination during pregnancy reduce RSV-related hospitalisations in infants?

Personal protective equipment in asbestos demolition workplaces

What are the benefits and harms of daratumumab in addition to antimyeloma medicines compared to antimyeloma medicines only for adults with newly diagnosed multiple myeloma who aren't suited for stem cell transplant?

Early or delayed surgical removal of the appendix: which works better to treat an appendiceal mass (lump on the appendix)?

Use of dexmedetomidine to reduce pain and induce sleep in newborn babies who need life support ventilation

Non-invasive high-frequency ventilation (nHFV) in newborn infants with respiratory distress

Risk assessment for aggressive behaviour in schizophrenia

Are sealants better than more traditional methods at stopping bleeding in connections created between blood vessels during vascular surgery?

Were measures taken by schools to contain the COVID-19 pandemic effective?

Does exercise after surgery to restore or improve blood circulation to the legs help people with peripheral arterial disease?

Metformin for endometrial hyperplasia



NICE Clinical Knowledge Summaries provides primary care practitioners with a readily accessible summary of the current evidence base and practical guidance on best practice in respect of over 300 common and/or significant primary care presentations.

The service is being regularly maintained and upgraded as and when significant new evidence emerges and up to 10 new topics will be added each year. You can access the service [here](#).

National Institute for Health Research (NIHR) Health Technology Assessment

[What is the best way to identify people with inherited high cholesterol?](#)

DoH Press Releases/New Publications

[Open consultation: Changes to regulations relating to the Care Quality Commission](#)

[Speech: Minister Whately speech on social care](#)

[Statutory guidance: Adult social care provider information provisions: formal notice](#)

[Press release: NHS Constitution plans to strengthen privacy, dignity and safety](#)

LIBRARY "BITS AND PIECES"

Published recently? Completed a research project?

Tell us about it! Fill out our publication or research repository form by clicking [here](#) and we'll display your work on our website

[Publication repository](#)

[Research repository](#)

The above current awareness bulletin has been produced by Keyll Darree Library and Information Service. We aim to produce the bulletin every week. If you need any help locating or accessing any of the items included in this issue, please contact the library staff on 642993/642974.

As usual, we welcome any feedback, so please let us know if you have any comments about format, content, length, arrangement or indeed, any other observations. If you know of anyone else who might like to receive the bulletin, or you would like your name removed from the distribution list, again, please let us know.

Check out our library website at www.librarykeylldarree.gov.im for details of all our services, facilities and any forthcoming events.