

## **IN THE KNOW: Keeping Staff Informed**

**Volume 19 (16) April 2024**

Struggling to access any of the articles in the bulletin today? Some may be available via [Athens](#) (for eligible library members), you can check [using Google Scholar](#). Article not available via Athens or you don't have a login? [Request the article](#) from the library! Not a member yet? You can [join here](#).

Check out our library [website](#) and our [Twitter](#) for details of all our services, facilities and any forthcoming events.



**Do you have feedback about library resources, staff, or spaces? Share it here:** <https://www.surveymonkey.com/r/KDFeedback>

### **In this issue:**

**IN THE SPOTLIGHT**

**MANX SKEET**

**STAFF HEALTH & WELLBEING**

**HOT OFF THE PRESS**

**PUBLIC HEALTH**

**EVIDENCE BASED PRACTICE**

**SOCIAL AND COMMUNITY CARE**

**HEALTH MANAGEMENT**

**PATIENT INFORMATION**

**LIBRARY BITS AND PIECES**

## **IN THE SPOTLIGHT**

[Antipsychotics for dementia linked to more harms than previously acknowledged](#)

[New mpox clade 1 lineage identified in DR Congo outbreak](#)

## **STAFF HEALTH & WELLBEING**

[Identifying groups of migrating doctors research](#)

[Hopes for 'year-round' service to Liverpool](#)

[Tower of Refuge Walk afoot next month](#)

[Hotels and restaurants show massive inflationary price increase](#)

[Parents get new childcare credit scheme](#)

[Rate of inflation falls to 3.2%](#)

[Spring recipes](#)

[Dairy free recipes](#)

### **Useful links**

[\*\*Patient.co.uk\*\*](#)

[\*\*NHS Website\*\*](#)

[\*\*Mental Health Foundation\*\*](#)

[\*\*World Health Organisation\*\*](#)



## MANX SKEET

[Carry lifesaving drug, says charity after heroin overdoses](#)

[MHK wants affordable internet access for those under financial pressure](#)

[MCALS holds open day for volunteers](#)

[Patients could be charged for assisted dying](#)

[Manx Care CEO 'shocked and disappointed' by abusive comments](#)

[Old Nurses Home to cost £2 million more than planned](#)

[Children's school safety questioned](#)

[Woman sets up 'wig bank' for chemotherapy patients](#)

[Chief minister hands over Covid review to Tynwald](#)

[Tynwald backs calls for social internet tariff](#)

[Manx Care shares advice after Heroin overdoses](#)

[Olympic medallist wants to rejuvenate the care system](#)

[No data on teens prescribed anti-depressants, says minister](#)

[Douglas Umbrella Project hopes to celebrate Island's diversity](#)

[Covid-19 review: Apologies, whistleblowing and lessons learned](#)

[Custody officers say more could have been done to keep prisoner safe](#)

[Politicians debating Rosalind Ranson investigation](#)

[DAT Can Help](#)

[Staff Member took Patients' Records Home](#)

[Prison medics not given full access to records](#)

['Woody Club' hopes to eliminate isolation and loneliness](#)

[Delays revealed in child safeguarding inquiries](#)

[Children's advocate calls for legislation to protect young people in care](#)

[999 line back to normal after glitch](#)

[Whistleblowers 'should never be stifled', says MHK](#)

[New emblem for next of kin of Manx civilians who die in service](#)

[Advanced WRAP training completed on-Island for first time](#)

## HOT OFF THE PRESS

### BBC News

[Martin Tyler: I nearly lost my voice forever](#)

[What is the smoking ban and how will it work?](#)

[MPs to vote on PM's smoking ban bill](#)

['Inoperable' Eva gets spinal surgery after review](#)

[End-of-life case parents call for naming of doctors](#)

[Arm skin patch could warn of organ rejection](#)

[Young nose cells may help children fight off Covid](#)

['No end to the stress' of ADHD medication shortage](#)

[Nine-year-olds added to malicious WhatsApp groups](#)

[Girl, 8, has world-first brain surgery](#)

[Singer Lucy Rose couldn't lift her baby after collapsing](#)

[Call to ban smacking in England and Northern Ireland](#)

[MPs back smoking ban for those born after 2009](#)

[Give vape-addicted kids nicotine patches – report](#)

[Martin Tyler: I nearly lost my voice forever](#)

[GP could be struck off after Just Stop Oil protest](#)

[Met investigates 'stem cell autism cure' claim](#)

[Boy, 7, died from Aids after doctor ignored rules](#)

[Gang culture at neurosurgery department, doctor alleges](#)

[Weak evidence and toxic debate letting down gender care children, report says](#)

[Sunak to tackle 'sick note culture' in welfare speech](#)

[Children used as 'guinea pigs' in clinical trials](#)

[More young, affluent women may be smoking - study](#)

[NHS weight management service offered to under fours](#)

[Puberty blockers paused for children in Scotland](#)

['My son had a stroke when he was 12 minutes old'](#)

[Sweden votes to lower age to change legal gender to 16](#)

## Useful Health Links

[NHS Website: A-Z of health conditions](#)

[NHS Website](#)

[Check NHS standards near you](#)

[Cancer Help UK](#)

[British Heart Foundation](#)

[Health and Care Professions Council](#)

[Mental Health Foundation](#)

[General Medical Council](#)

[Nursing and Midwifery Council](#)

[Care Quality Commission](#)

[NICE](#)

[NHS Scotland](#)

[Health in Wales](#)

[NI Direct](#)

[Clinical trials information](#)

[Diabetes UK](#)

[British Lung Foundation](#)

[National Obesity Forum](#)

## Critical Thinking

Do you believe everything you read? Is there truth behind the headlines? Why does false information spread so fast on social media? What can you do to make sure you don't get taken in? Start by looking up the stories on websites such as the ones below:

[BBC Reality Check](#)

[Full fact](#)

[Ferret Fact Service](#)

[British Heart Foundation – Behind the headlines](#)

## Misinformation

Do you keep a look out for misinformation circulating online? Do you know the impact it could have on patients? How do you counter it?

[Advocating for population health: The role of public health practitioners in the age of artificial intelligence](#)

[Medical Accuracy of Reddit in Patient Discussions of Prospective Ocular Stem Cell Therapies for Retinal Degenerative Diseases](#)

[Breakdown of knowledge authority: semiotic analysis of an anti-vax conspiracy theory influencer on Twitter](#)

## **Bulletins**

**(click to open)**

[Bulletin for clinical commissioning groups  
\(CCGs\)](#)

[Chief Nursing Bulletin](#)

[Healthcare Science Bulletin](#)

[Compassion in Practice strategy and 6Cs  
Live!](#)

[Liaison and Diversion Bulletin](#)

[Pharmacy and Medicines Bulletin](#)

[Primary Care Bulletin](#)

[Specialised Commissioning Stakeholder  
Bulletin](#)

[Revalidation Matters](#)

[Liaison and Diversion Bulletin](#)

[Specialised Commissioning Stakeholder  
Bulletin](#)



## **PUBLIC HEALTH**

**Health e-News Bulletin/NLH Public Health Newsletter**

### **Adult Protection & Safeguarding Domestic Violence**

["I faced so many barriers": Interpreting with deaf women survivors of domestic violence as a vulnerable population](#)

[A short-term "behavioural support" service for autistic adults without an intellectual disability: a pilot evaluation](#)

["Our stories are different but our situations are the same": gendered experiences finding housing](#)

## **Addiction**

[Empirically contrasting urine drug screening-based opioid use disorder treatment outcome definitions](#)

[Questioning methadone split-dosing for analgesia among hospitalized patients with opioid use disorder](#)



## **Allergies**

[Effectiveness of immunoglobulin replacement therapy in preventing infections in patients with chronic obstructive pulmonary disease: a systematic review](#)

[Sunflower seed allergy: Identification of novel 2S-albumins as potential marker allergens](#)



## **Cardiovascular Disease**

[Non-High-Density Lipoprotein Cholesterol Levels From Childhood to Adulthood and Cardiovascular Disease Events](#)

[Preventive PCI of Vulnerable Plaques Linked to Fewer Cardiac Events](#)

[Managing Elevated Blood Pressure in Hospitalized Patients](#)

[Acute Cardiac Events in Hospitalized Older Adults With Respiratory Syncytial Virus Infection](#)



## **Complementary Medicine/Alternative Medicine**

[Ganoderma spore lipid ameliorates docetaxel, cisplatin, and 5-fluorouracil chemotherapy-induced damage to bone marrow mesenchymal stem cells and hematopoiesis](#)

[Potential role of Citrus bergamia flower essential oil against oral pathogens](#)

[The impact of seasonal variation on the composition of the volatile oil of Polyalthia suberosa \(Roxb.\) Thwaites leaves and evaluation of its acetylcholinesterase inhibitory activity](#)

[Misinformation Persists in Complementary Health: Evaluating the Reliability and Quality of YouTube-Based Information on the Use of Acupuncture for Chronic Pain](#)

## **Critical Care**

[Occurrence or Detection of Occurrence](#)

[Cardiopulmonary Resuscitation for Organ Preservation After Death by Neurologic Criteria: Let Patients' Interests Guide Us](#)

[Comment on "Dexmedetomidine Sedation in Traumatic Brain Injury: A Transforming Clinical Research and Knowledge in Traumatic Brain Injury Study"](#)

## **Dementia**

[Comparison of tau spread in people with Down syndrome versus autosomal-dominant Alzheimer's disease: a cross-sectional study](#)

[The role and impact of therapeutic counselling on the emotional experience of adults living with dementia: A systematic review](#)





## **Dental**

[Fostering engagement in virtual anatomy learning for healthcare students](#)

[Validating the knowledge represented by a self-organizing map with an expert-derived knowledge structure](#)

[Factors associated with age-related changes in oral diadochokinesis and masticatory function in healthy old adults](#)

## **Diabetes**

[New study focuses on the placenta for clues to the development of gestational diabetes](#)

[Weight Management with Orlistat in Type 2 Diabetes – An Electronic Healthcare Records Study](#)

[Sodium-Glucose Cotransporter-2 Inhibitors vs Sulfonylureas for Gout Prevention Among Patients With Type 2 Diabetes Receiving Metformin](#)



## **Diet, Nutrition and Obesity**

[Take it from the rats: A junk food diet can cause long-term damage to adolescent brains](#)

[Microplastics make their way from the gut to other organs](#)

[The influence of body composition on the response to dynamic stimulation of the endocrine pituitary-testis axis](#)



## **Digital Health Technology**

[Euroking patient safety alert: 13 trusts switch supplier](#)

[Boots.com to stock diagnostic tampon vaginal health screening kit](#)

[New virtual reality experience improves student mental health](#)



## **End of Life Care**

[Assisted dying: principles, possibilities, and practicalities. An English physician's perspective](#)

[Building public engagement and access to palliative care and advance care planning: a qualitative study](#)

["Being an informal caregiver – strengthening resources": mixed methods evaluation of a psychoeducational intervention supporting informal caregivers in palliative care](#)

## **Immunisation and Infection**



[Listeria monocytogenes-associated spontaneous bacterial peritonitis in France: a nationwide observational study of 208 cases](#)

[Immunogenicity and safety of an \*ORF7\*-deficient skin-attenuated and neuro-attenuated live vaccine for varicella: a randomised, double-blind, controlled, phase 2a trial](#)

[A new tool for accelerating tuberculosis vaccine development](#)

[Unveiling the viral aetiologies of lower respiratory infections](#)

[Changes in hospital mortality in patients with cancer during the COVID-19 pandemic \(ISARIC-CCP-UK\): a prospective, multicentre cohort study](#)

## **Inclusion and Diversity**

[Staff recognised for helping create inclusive culture for staff and patients](#)

[Recruiting, managing and developing people with a disability or health condition: A practical guide for managers](#)

[A primary care funding model to address health inequalities: a case study from Leicester, Leicestershire and Rutland](#)

## **Learning Disability**

[Supporting neurodivergent nursing students in their practice placements](#)

[Effectiveness of the PASS reading enhancement program \(PREP\) on reducing reading problems of students with special learning disabilities.](#)

## Mental Health

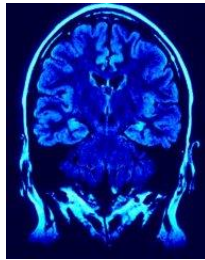


[Soundless voices, silenced selves: are auditory verbal hallucinations in schizophrenia truly perceptual?](#)

[How can you compare data about mental health and mental capacity law across borders? #BIGSPD24](#)

[Physical activity reduces stress-related brain activity to lower cardiovascular disease risk](#)

[Teen stress may raise risk of postpartum depression in adults](#)



## Neurology

[What we remember](#)

[Biomarkers for progressive multifocal leukoencephalopathy: emerging data for use of JC virus DNA copy number in clinical trials](#)

[\*MAPT\*H2 haplotype and risk of Pick's disease in the Pick's disease International Consortium: a genetic association study](#)

## **Obstetrics and Gynaecology**

[Women's health communications activity](#)

[Pharmacological treatment of ectopic pregnancy: Accuracy, safety and cost-effectiveness of day 1–7  \$\beta\$ -hCG measurements](#)

[Effects of male hepatitis B virus infection and serostatus on sperm quality, pregnancy outcomes, and neonatal outcomes following intrauterine insemination](#)

[Endometriosis: diagnosis and management – updated guidance \(NG73\)](#)



## **Oncology**

[NHS cancer checks top three million in one year](#)

[Mitotane: a friend or a foe before cabozantinib treatment in adrenocortical cancer?](#)

[Cancer Workforce Fund launched to address oncology workforce crisis](#)

[The Lancet Breast Cancer Commission](#)

## **Ophthalmology**

[Changes in corneal biomechanics in patients with glaucoma: a systematic review and meta-analysis](#)

[Genotype-phenotype associations in CRB1 bi-allelic patients: a novel mutation, a systematic review and meta-analysis](#)

[Association between the response of intravitreal anti-vascular endothelial growth factor injection and systemic factors of diabetic macular edema](#)

[Comparative visual outcomes of the first versus second eye following small-incision lenticule extraction \(SMILE\)](#)



## **Paediatrics**

[Mortality in the neonatal intensive care setting: Do benchmarks tell the whole story?](#)

[Genomic multidisciplinary teams: A model for navigating genetic mainstreaming and precision medicine](#)

[Clinical and nutritional correlates of bacterial diarrhoea aetiology in young children: a secondary cross-sectional analysis of the ABCD trial](#)

## **Pain Medicine**

[Complex regional pain syndrome: advances in epidemiology, pathophysiology, diagnosis, and treatment](#)

[Opioid use disorder in pediatric populations: considerations for perioperative pain management and precision opioid analgesia](#)

[Dropped head syndrome after bilateral cervical radiofrequency ablation. A case report and literature review](#)

[Mechanisms of Complex Regional Pain Syndrome](#)

## **Patient Experience**

[Flipping Healthcare by Including the Patient Perspective In Integrated Care Pathway Design: A Scoping Review](#)

[Patient experience with in-office transperineal prostate biopsy: does medication make a difference?](#)



## Pharmacology

[Pharmacokinetics and safety of coformulated bictegravir, emtricitabine, and tenofovir alafenamide in children aged 2 years and older with virologically suppressed HIV: a phase 2/3, open-label, single-arm study](#)

[Remdesivir and tixagevimab plus cilgavimab for treating COVID-19 – final draft guidance](#)

[Company presents positive data from extension study of atogepant for migraine prophylaxis](#)

[Ten years of direct oral anticoagulants: lessons learned and challenges ahead](#)

## Primary Care

[ICBs planning same-day hubs 'do not care about GPs', says BMA leader](#)

[Significant proportion of RTIs given more than one antibiotic course](#)

[GP workforce, funding and continuity all linked to higher life expectancy](#)

[Support for primary care prescribing for adult ADHD in England: national survey](#)



## **Seniors and Aging**

[Shorter Dual Antiplatelet Therapy for Older Adults After Percutaneous Coronary Intervention: A Systematic Review and Network Meta-Analysis](#)

[Care home staff and residents need 'family' bonds to thrive, says study](#)

[How trauma gets 'under the skin': Research investigates impaired muscle function caused by childhood trauma](#)

[Systolic Blood Pressure and Survival to Very Old Age: Results From the Women's Health Initiative](#)



## **Sexual Health**

[Challenges for cervical screening in people experiencing homelessness](#)

[A systematic review and critical appraisal of menopause guidelines](#)

[Womens experiences of postpartum contraceptive services when elective caesarean section is the method of birth: a qualitative study](#)

[Patient and public involvement in abortion research: reflections from the Shaping Abortion for Change \(SACHA\) Study](#)



## **Sleep Medicine**

[Prevalence of major depressive disorder and post-traumatic stress disorder among first-time sleep center attendees](#)

[Hypersomnolence is associated with non-remission of major depressive disorder](#)

[Cross-cultural validity of the Dutch Sleep-Related Breathing Disorder scale of the Pediatric Sleep Questionnaire in a general population](#)



## **Sports Medicine/Fitness**

[High prevalence of stress fractures and long-term amenorrhoea in high endurance female athletes: the misleading lack of correlation with bone mineral density.](#)

[Food insecurity in adolescent athletes](#)

[Effect of Meniscal Tear Patterns and Preoperative Cartilage Status on Joint Space Width After Medial Opening-Wedge High Tibial Osteotomy](#)

## **Surgery**

[Commentary: Real-world neoadjuvant immunochemotherapy for lung cancer: Additional data but still many questions](#)

[Interlocking intramedullary nail for forearm diaphyseal fractures in adults—A systematic review and meta-analysis of outcomes and complications](#)

[Discussion to: Erector spinae blocks for opioid-sparing multimodal pain management after pediatric cardiac surgery](#)

[Commentary: A tough call: Does the kidney come with the heart?](#)

## **Vaping/Smoking**



[A cross-sectional study of university students' mental health and lifestyle practices amidst the COVID-19 pandemic](#)  
[Pack Years of Tobacco Cigarette Smoking as a Predictor of Bony Fusion After Anterior Cervical Discectomy and Fusion](#)

## **World Health Organisation**

[WHO announces Health for All Film Festival shortlist and jury](#)

[In world first, Nigeria introduces new 5-in-1 vaccine against meningitis](#)

[Enhancing Global Health and Well-Being: WHO and the Netherlands strengthen their Partnership](#)

## **Wound Management**

[Two-year incidence and risk factors of diabetic foot ulcer: second phase report of Ahvaz diabetic foot cohort \(ADFC\) study](#)

[Central Venous Access Device-Associated Skin Complications in Adults with Cancer: A Prospective Observational Study](#)

[Summary and evaluation of randomized controlled trial on Chinese patent medicine in treatment of diabetic foot ulcer](#)

## SOCIAL AND COMMUNITY CARE

[Self-Care A-Z: Sense-ible Self-Care](#)

['Why practice education research must be catalyst for tackling longstanding issues facing role'](#)

[Overcoming the barriers to contact between siblings separated by the care system](#)

[BASW England becomes headline sponsor of Social Worker of the Year Awards](#)

[Canadian social workers' attitudes toward immigrants with different legal statuses in Canada](#)

[How community providers, alongside wider system partners, can support people living with frailty](#)

[One in ten children known to social care missing half of school time, reveals DfE data](#)

['A kick in the teeth': DfE axes social work leadership training programme](#)

[Improving public perception of social work requires positive media exposure, say practitioners](#)

['The power of social work has shaped who I am' – ADCS's new care experienced president](#)

[Assistive technology and dementia: practice tips](#)

[Teaching Note—Designing and Implementing Interprofessional Simulation: A Social Work, Nursing, and Pharmacy Collaboration](#)

[Social workers' perceptions regarding legal intervention for older adults without significant cognitive decline who are abused by their adult child](#)

[When Movement Therapy Meets Spirituality: A Quasi-Experiment](#)

[Social Worker Educational Experiences of Practice Preparation with LGBT Individuals in Hospital Settings](#)

### Key Resources

[e-Learning](#)

[Social Care Online](#)

[Research Register for Social Care](#)

[Social Care Research Ethics Committee](#)

## HEALTH MANAGEMENT

[What is happening to life expectancy in England?](#)

[Transparency in health and social care](#)

[Public preferences for pharmacogenetic testing in the NHS:  
Embedding a discrete choice experiment within service design to  
better meet user needs](#)

[Building a mental health workforce for the future](#)

[Duty of candour review](#)

[Building a mental health workforce for the future](#)

[Going concern considerations for NHS charities](#)

[Age UK's blueprint for improving the lives of older people](#)

[Excellence through equality: anti-racism as a quality improvement  
tool](#)

[Innovative mental health and learning disability nursing recruitment](#)

[Managing a centralised workplace adjustments budget](#)

[What is happening to life expectancy in England?](#)

[Managing research finance in the NHS](#)

[Identifying groups of migrating doctors research](#)

[UK cancer patients waiting longer for treatment than comparable  
countries, research finds](#)

[West Midlands rolls out pharmacy-based bowel cancer screening](#)

[Addressing the leading risk factors for ill health – supporting local  
government to do more](#)

[Illustrating the relationship between poverty and NHS services](#)

[What does it mean to be a population health fellow as an allied  
health professional, and why does it matter?](#)

[Commissioning to reduce health inequalities: the role of finance](#)

[Putting money where our mouth is? Exploring health inequalities  
funding across systems](#)

[How to embed action on health inequalities into integrated care  
systems](#)

[The challenges and potential of intermediate care](#)

[Six ways to create a culture for integration: benchmarking tool](#)

[How Coventry and Warwickshire ICS boosts support and local jobs  
for underrepresented groups](#)

['Always at the bottom of the pile': the Homeless and Inclusion Health  
Barometer 2024](#)

[Close enough to care: a new structure for the English health and  
care system](#)

[Top tips and key actions for successful collaborative partnership  
working across mental health services](#)

**BMJ Evidence Updates**

[Chronic disease prevention and screening outcomes for patients with and without financial difficulty: a secondary analysis of the BETTER WISE cluster randomised controlled trial](#)

[Cardiovascular safety of evogliptin dual and triple therapy in patients with type 2 diabetes: a nationwide cohort study](#)

[Rationale and protocol for a prospective cohort study of respiratory viral infections in patients admitted from emergency departments of community hospitals: Effect of respiratory Virus infection on EmeRgencY admission \(EVERY\) study](#)

[Labour Care Guide implementation as a decision-making tool for monitoring labour among healthcare providers in Uganda: protocol for a mixed-methods study](#)

[How do people living with obesity who use obesity services perceive healthcare professionals representation of the disease on social media? An interpretative phenomenological analysis](#)

[Predictive performance of machine learning compared to statistical methods in time-to-event analysis of cardiovascular disease: a systematic review protocol](#)

[The impact of delayed diagnosis and treatment due to COVID-19 on Australian thyroid cancer patients: a qualitative interview study](#)

[Real-world data evaluating Guys rapid diagnostic clinic as an alternate pathway for patients with FIT levels below 10](#)

[Systematic RADaR analysis of responses to the open-ended question in the Culture of Care Barometer survey of a Dutch hospital](#)

[Effects of a therapeutic lifestyle modification intervention on cardiometabolic health, sexual functioning and health-related quality of life in perimenopausal Chinese women: protocol for a randomised controlled trial](#)

[Operational complexities in international clinical trials: a systematic review of challenges and proposed solutions](#)

[Study protocol: improving response to malaria in the Amazon through identification of inter-community networks and human mobility in border regions of Ecuador, Peru and Brazil](#)

[Using an ecological model of health behaviour to identify factors associated with smoking behaviour among Buddhist novices in Thailand: a cross-sectional digital survey](#)

[Artificial intelligence-based prediction of diabetic retinopathy evolution \(EviRed\): protocol for a prospective cohort](#)

[Scaling hypertension treatment in 24 low-income and middle-income countries: economic evaluation of treatment decisions at three blood pressure cut-points](#)

[The N-LVA Study: effectiveness and cost-effectiveness of lymphaticovenous anastomosis \(LVA\) for patients with cancer who](#)

[suffer from chronic peripheral lymphoedema - study protocol of a multicentre, randomised sham-controlled trial](#)

[Professionals perspectives on interventions to reduce problematic alcohol use in older adults: a realist evaluation of working elements](#)

[Impact of health education on promoting influenza vaccination health literacy in primary school students: a cluster randomised controlled trial protocol](#)

[Development of an enhanced scoring system to predict ICU readmission or in-hospital death within 24 hours using routine patient data from two NHS Foundation Trusts](#)



**Cochrane**

[Pharmacological treatments for adults with overweight and obesity without diabetes](#)

[Botulinum toxins for sleep bruxism](#)

[Serious adverse events associated with systemic treatments for psoriasis: a network meta-analysis of observational studies and randomized controlled trials](#)

[Antibiotics for relapses of protracted bacterial bronchitis](#)



NICE Clinical Knowledge Summaries provides primary care practitioners with a readily accessible summary of the current evidence base and practical guidance on best practice in respect of over 300 common and/or significant primary care presentations.

The service is being regularly maintained and upgraded as and when significant new evidence emerges and up to 10 new topics will be added each year. You can access the service [here](#).

### National Institute for Health Research (NIHR) Health Technology Assessment

[Hospice and palliative care services could encourage eye donation](#)

### DoH Press Releases/New Publications

[News story: MPs to vote on landmark Bill to create Smokefree generation](#)

[Open consultation: Community water fluoridation expansion in the north east of England](#)

[Impact assessment: Medical examiners and death certification reform: summary of impact](#)

[Policy paper: National Partnership Agreement: Right Care, Right Person](#)

[Guidance: Attributing the costs of health and social care research](#)

[Press release: Government review to create a more open healthcare system](#)

[Press release: AI to help keep people in work through £1.5 million investment in occupational health](#)

[Policy paper: Government response to the Joint Committee on the draft Mental Health Bill](#)

[Policy paper: Better Care Fund policy framework 2023 to 2025](#)

[Statement to Parliament: Tobacco & Vapes Bill Second Reading](#)

## **LIBRARY "BITS AND PIECES"**

### **Published recently? Completed a research project?**

Tell us about it! Fill out our publication or research repository form by clicking [here](#) and we'll display your work on our website

[Publication repository](#)

[Research repository](#)

The above current awareness bulletin has been produced by Keyll Darree Library and Information Service. We aim to produce the bulletin every week. If you need any help locating or accessing any of the items included in this issue, please contact the library staff on 642993/642974.

As usual, we welcome any feedback, so please let us know if you have any comments about format, content, length, arrangement or indeed, any other observations. If you know of anyone else who might like to receive the bulletin, or you would like your name removed from the distribution list, again, please let us know.

Check out our library website at [www.librarykeylldarree.gov.im](http://www.librarykeylldarree.gov.im) for details of all our services, facilities and any forthcoming events.