

Autism Spectrum Condition Steering Group Information for people interested in joining the group

What will I be expected to do?

Members of the steering group will:

- attend meetings;
- read progress reports and other documentation to prepare for each meeting;
- take part in discussions about the content of the progress reports;
- take part in discussions about the progress of the Autism Spectrum Condition (ASC) strategy;
- share opinions on future actions suggested by other members of the group; and
- suggest actions that could be included in the strategy in the future.

There may be other duties relating to the meetings that are required in the future, these will be explained in advance of them happening.

What is the steering group?

The steering group will be a group of about 9 people who will monitor how the actions in the strategy are progressing. The Chairperson running the meetings will be sent updates from staff across Isle of Man Government every three months and the group will discuss the updates.

The Chairperson of the group will also be responsible for submitting a progress report to Tynwald in September 2025. The steering group will also discuss future actions they think will help achieve our vision to create an ASC friendly Island and publish an updated plan annually.

Who is in the steering group?

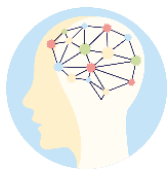
Most members of the steering group will be civil servants (people who work for government), one person will be the Head of Service for Autism Initiatives and one, two or three will be members of the public with ASC (known as the 'lay-members').

When will the meetings be?

The steering group will meet once every three months during regular working hours (Monday to Friday, 9am-5pm). We do not know the exact dates or times yet.

Where will the meetings be?

The meetings will be held at the Department of Health and Social Care offices on Circular Road.



How long will I be in the steering group?

Lay members will be part of the steering group for two years. However, you can leave the steering group at any time before the end of the two years.

Other information

- Lay members will be paid for their time.
- Reasonable adjustments will be made.
- A copy of the ASC Strategy can be found at www.gov.im/ASCStrategy

How to apply to join the steering group

Please complete the enclosed form and return it to:

Department of Health and Social Care

1st Floor Belgravia House

Circular Road

Douglas

IM1 1AE

Alternatively, completed forms can be scanned and emailed to ASCstrategy@gov.im

Please send in your form no later than **5pm on Friday the 10th of May 2024**.

If you have any questions about applying to be on the group, or about anything else to do with the steering group, please contact ASCStrategy@gov.im or phone 685816 and ask for the Policy and Strategy Team.

All applications will be reviewed and staff will create a shortlist of people who will each be invited to have a discussion with the chairperson of the steering group and one other member of staff. Further information will be provided to applicants who are shortlisted. All applicants will be informed in writing as to whether they have been shortlisted and also if they have been selected to be on the steering group.

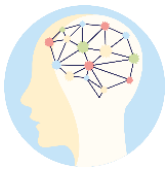
Applications will only be accepted from people with an ASC diagnosis*, who are aged 18 or over and who live on the Isle of Man. Please DO NOT apply to be a lay member if you are a family member, carer or friend of a person with ASC or if you are a professional in this area of work, unless you also have a diagnosis of ASC.

* Your diagnosis can be ASC, classic autism, autism, high-functioning autism, Asperger's Syndrome or anything else that is considered part of ASC.



Application Form

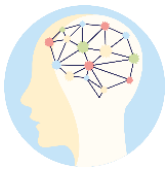
Full Name:	
Age:	
E-mail address:	
Telephone number (optional):	
Address:	
Do you have a diagnosis of Autism Spectrum Condition (ASC)? Your diagnosis can be ASC, classic autism, autism, high-functioning autism, Asperger's Syndrome or anything else that is considered part of ASC.	
Are you able to attend meetings during regular working hours (Monday to Friday, 9am-5pm)?	
Do you require any reasonable adjustments to be made? If you do, please give a brief description of them. (These will not affect your application, we are asking so we know how best to support you)	



Please describe briefly:

- why you would like to be part of the steering group
- any knowledge or skills you think would be relevant to the steering group
- any experience you have that you think would benefit the steering group.

If you run out of space to write everything you wish to write then please use a separate piece of paper and submit that with your application form.



When signing this document I confirm that:

- The information I have given in this application is, to the best of my knowledge, true.
- I have an ASC diagnosis.
- I am aged 18 or over.
- I live on the Isle of Man.

Full name: _____

Signature: _____

Date: _____

Thank you for applying to be on the steering group.