


**ABBREVIATIONS (All Proposals maps):**  
 Amb - Ambulance Station  
 BP - Business Park  
 CAS - Civic Amenity Site  
 Cem - Cemetery  
 CF - Community Facility  
 FS - Fire Station  
 GC - Golf Course  
 H - Buildings/Land for Hospital Purposes  
 Hot - Hotel  
 HC - Health Centre  
 Ind - Industry  
 MU - Mixed Use  
 Mus - Museum  
 OS - Open Space definitions: P=Park, PF=Playing Fields,  
 POS=Public Open Space, PP=Play Park, SP=Sports Pitch(es)  
 PS - Primary School  
 RSTW - Regional Sewage Treatment Works  
 SS - Secondary School  
 SW - Sewage Works  
 T - Telecommunications Site  
 W - Place of Worship

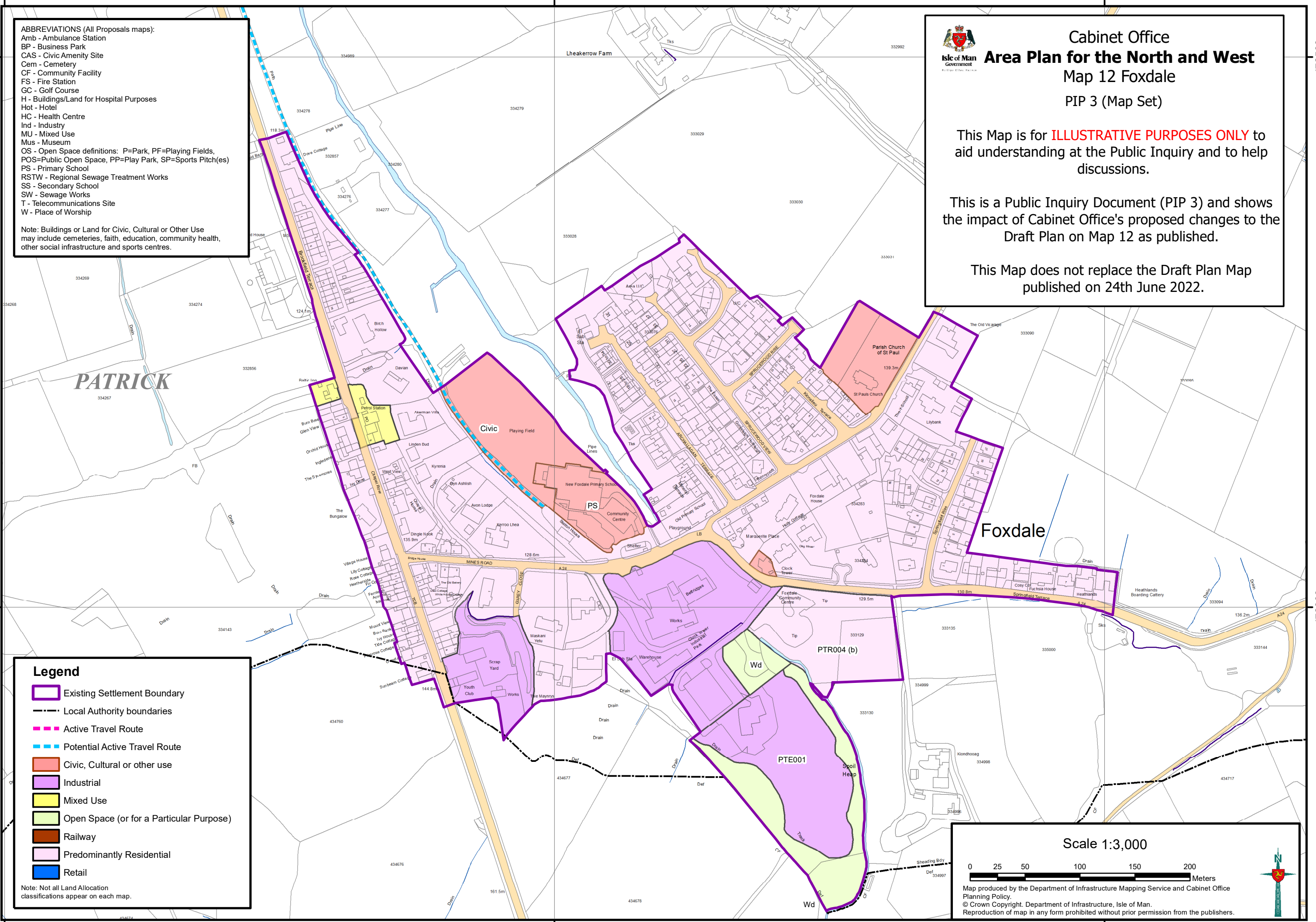
Note: Buildings or Land for Civic, Cultural or Other Use may include cemeteries, faith, education, community health, other social infrastructure and sports centres.

 **Cabinet Office**  
**Area Plan for the North and West**  
**Map 12 Foxdale**  
**PIP 3 (Map Set)**

This Map is for **ILLUSTRATIVE PURPOSES ONLY** to aid understanding at the Public Inquiry and to help discussions.

This is a Public Inquiry Document (PIP 3) and shows the impact of Cabinet Office's proposed changes to the Draft Plan on Map 12 as published.

This Map does not replace the Draft Plan Map published on 24th June 2022.



**Legend**

-  Existing Settlement Boundary
-  Local Authority boundaries
-  Active Travel Route
-  Potential Active Travel Route
-  Civic, Cultural or other use
-  Industrial
-  Mixed Use
-  Open Space (or for a Particular Purpose)
-  Railway
-  Predominantly Residential
-  Retail

Note: Not all Land Allocation classifications appear on each map.

**Scale 1:3,000**

0 25 50 100 150 200 Meters

Map produced by the Department of Infrastructure Mapping Service and Cabinet Office Planning Policy.  
 © Crown Copyright. Department of Infrastructure, Isle of Man.  
 Reproduction of map in any form prohibited without prior permission from the publishers.

