

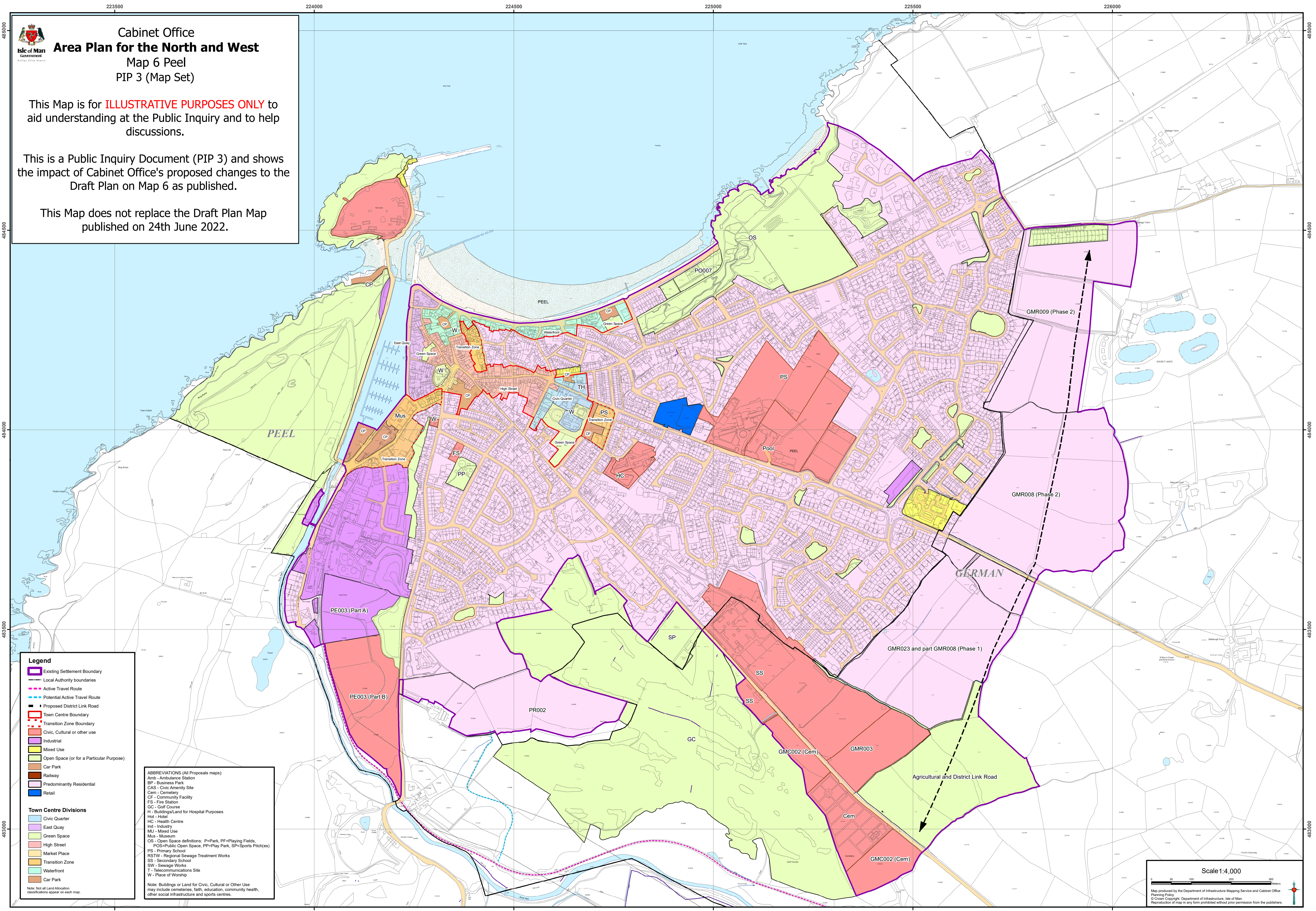


Cabinet Office
Area Plan for the North and West
 Map 6 Peel
 PIP 3 (Map Set)

This Map is for **ILLUSTRATIVE PURPOSES ONLY** to aid understanding at the Public Inquiry and to help discussions.

This is a Public Inquiry Document (PIP 3) and shows the impact of Cabinet Office's proposed changes to the Draft Plan on Map 6 as published.

This Map does not replace the Draft Plan Map published on 24th June 2022.



Legend

- Existing Settlement Boundary
- Local Authority boundaries
- Active Travel Route
- Potential Active Travel Route
- Proposed District Link Road
- Town Centre Boundary
- Transition Zone Boundary
- Civic, Cultural or other use
- Industrial
- Mixed Use
- Open Space (or for a Particular Purpose)
- Car Park
- Railway
- Predominantly Residential
- Retail

Town Centre Divisions

- Civic Quarter
- East Quay
- Green Space
- High Street
- Market Place
- Transition Zone
- Waterfront
- Car Park

ABBREVIATIONS (All Proposals maps):
 Amb - Ambulance Station
 BP - Business Park
 CAS - Civic Amenity Site
 Cem - Cemetery
 CF - Community Facility
 FS - Fire Station
 GC - Golf Course
 H - Buildings/Land for Hospital Purposes
 Hot - Hotel
 HC - Health Centre
 Ind - Industry
 MU - Mixed Use
 Mus - Museum
 OS - Open Space definitions: P=Park, PF=Playing Fields, POS=Public Open Space, PP=Play Park, SP=Sports Pitch(es)
 PS - Primary School
 RSTW - Regional Sewage Treatment Works
 SS - Secondary School
 SW - Sewage Works
 T - Telecommunications Site
 W - Place of Worship

Note: Buildings or Land for Civic, Cultural or Other Use may include cemeteries, faith, education, community health, other social infrastructure and sports centres.

Scale 1:4,000

Map produced by the Department of Infrastructure Mapping Service and Cabinet Office Planning Policy
 © Crown Copyright. Department of Infrastructure, Isle of Man.
 Reproduction of map in any form prohibited without prior permission from the publishers.