

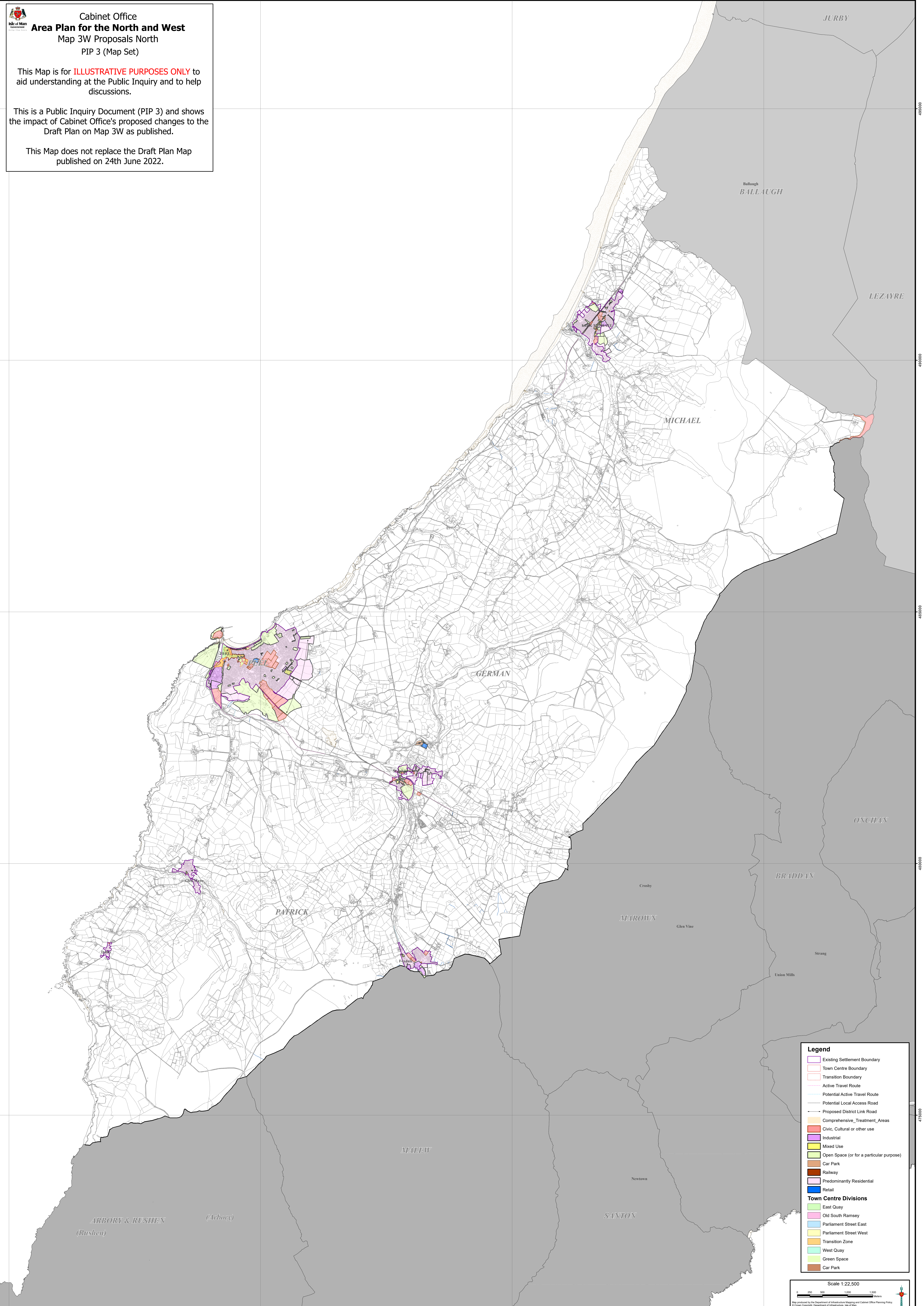


Cabinet Office  
**Area Plan for the North and West**  
Map 3W Proposals North  
PIP 3 (Map Set)

This Map is for **ILLUSTRATIVE PURPOSES ONLY** to aid understanding at the Public Inquiry and to help discussions.

This is a Public Inquiry Document (PIP 3) and shows the impact of Cabinet Office's proposed changes to the Draft Plan on Map 3W as published.

This Map does not replace the Draft Plan Map published on 24th June 2022.



**Legend**

- Existing Settlement Boundary
- Town Centre Boundary
- Transition Boundary
- Active Travel Route
- Potential Active Travel Route
- Potential Local Access Road
- Proposed District Link Road
- Comprehensive Treatment Areas
- Civic, Cultural or other use
- Industrial
- Mixed Use
- Open Space (or for a particular purpose)
- Car Park
- Railway
- Predominantly Residential
- Retail

**Town Centre Divisions**

- East Quay
- Old South Ramsey
- Parliament Street East
- Parliament Street West
- Transition Zone
- West Quay
- Green Space
- Car Park

Scale 1:22,500

Map produced by the Department of Infrastructure, Mapping and Cabinet Office Planning Policy.  
© Crown Copyright. Department of Infrastructure, Isle of Man.  
Reproduction of map in any form prohibited without prior permission from the publishers.