

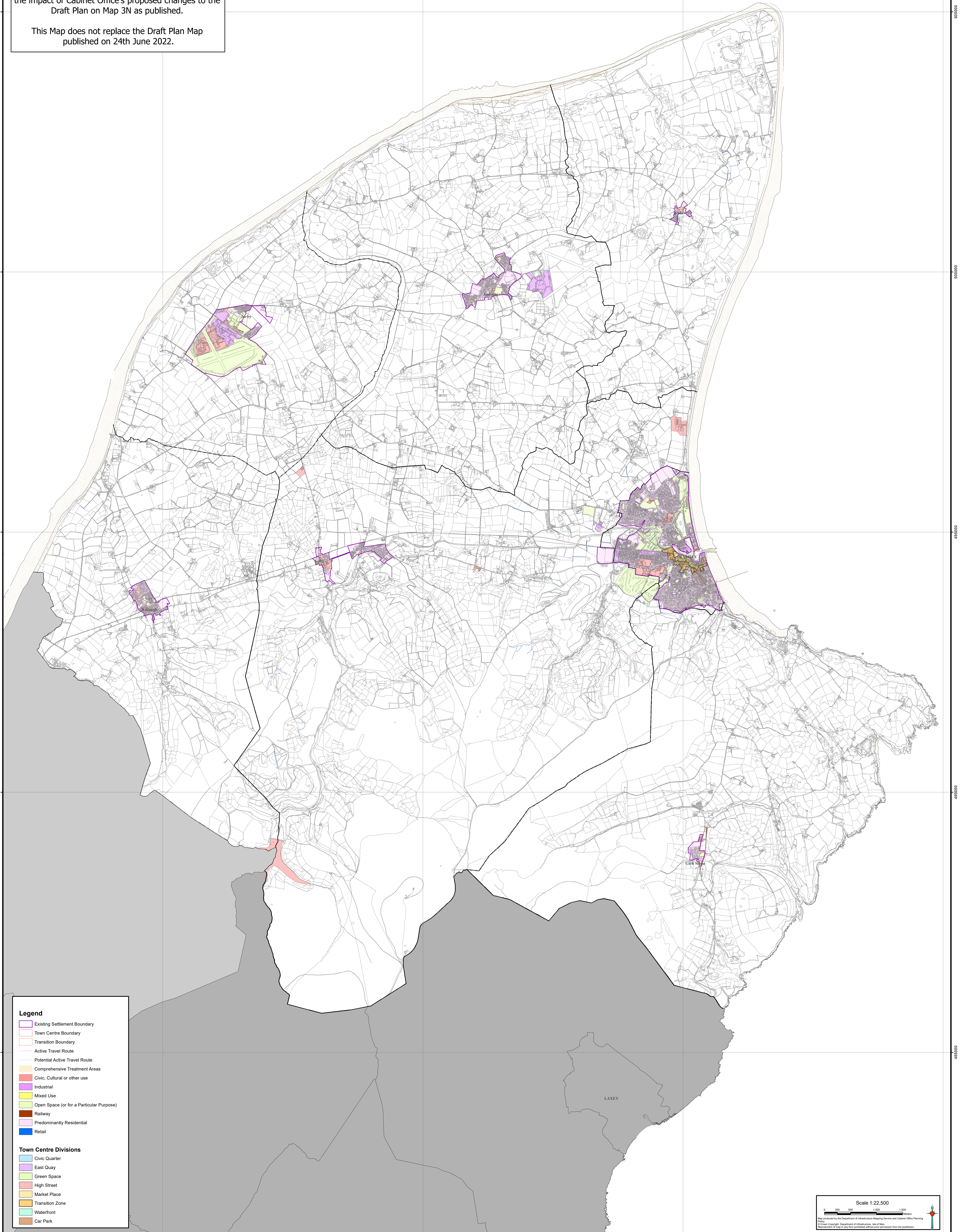


Cabinet Office
Area Plan for the North and West
 Map 3N Proposals North
 PIP 3 (Map Set)

This Map is for **ILLUSTRATIVE PURPOSES ONLY** to aid understanding at the Public Inquiry and to help discussions.

This is a Public Inquiry Document (PIP 3) and shows the impact of Cabinet Office's proposed changes to the Draft Plan on Map 3N as published.

This Map does not replace the Draft Plan Map published on 24th June 2022.



Legend

- Existing Settlement Boundary
- Town Centre Boundary
- Transition Boundary
- Active Travel Route
- Potential Active Travel Route
- Comprehensive Treatment Areas
- Civic, Cultural or other use
- Industrial
- Mixed Use
- Open Space (or for a Particular Purpose)
- Railway
- Predominantly Residential
- Retail

Town Centre Divisions

- Civic Quarter
- East Quay
- Green Space
- High Street
- Market Place
- Transition Zone
- Waterfront
- Car Park

Scale 1:22,500

Map produced by the Department of Infrastructure Mapping Service and Cabinet Office Planning
 © Crown Copyright. Department of Infrastructure, Isle of Man.
 Reproduction of this map is prohibited without prior permission from the publishers.