

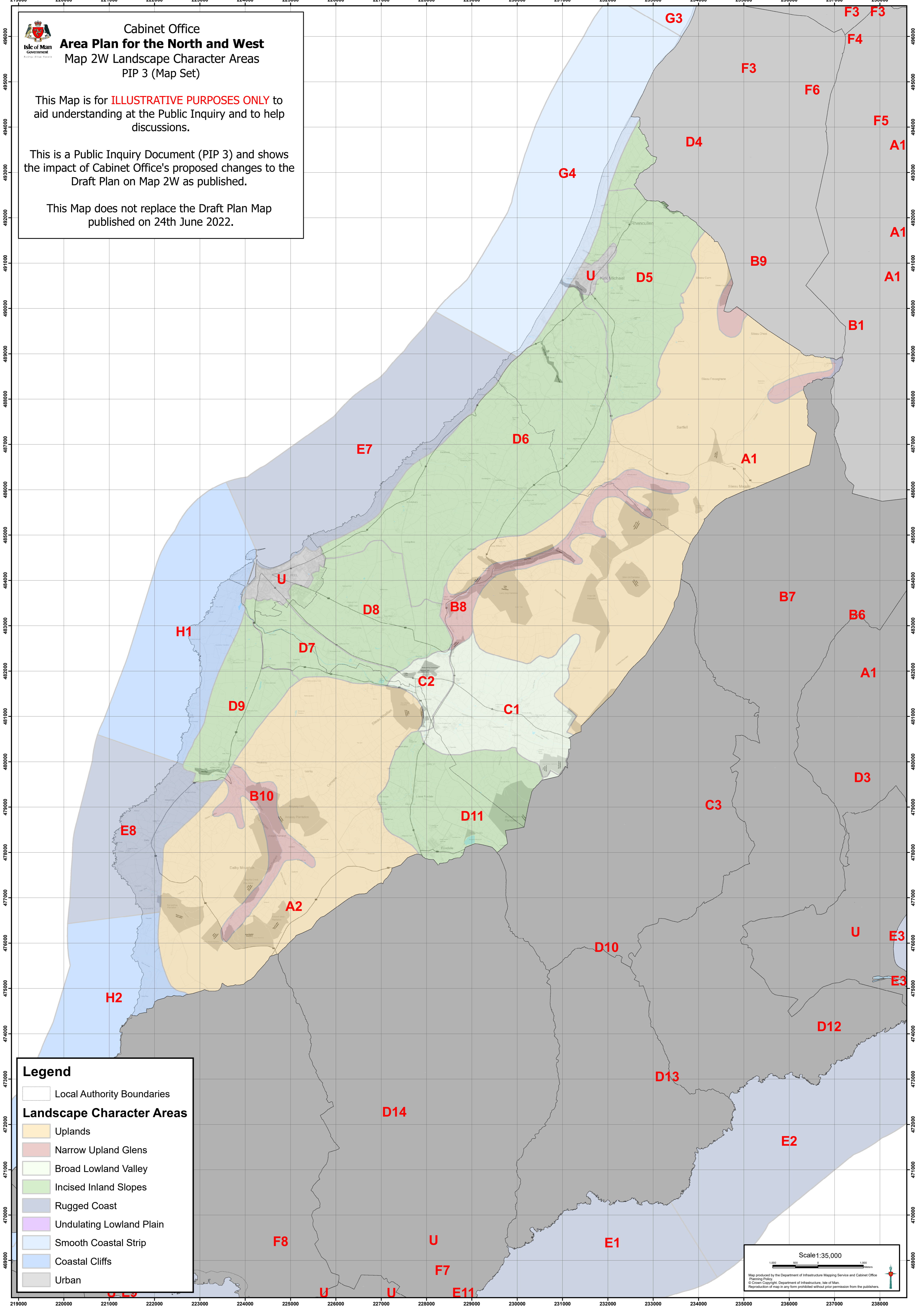


Cabinet Office
Area Plan for the North and West
 Map 2W Landscape Character Areas
 PIP 3 (Map Set)

This Map is for **ILLUSTRATIVE PURPOSES ONLY** to aid understanding at the Public Inquiry and to help discussions.

This is a Public Inquiry Document (PIP 3) and shows the impact of Cabinet Office's proposed changes to the Draft Plan on Map 2W as published.

This Map does not replace the Draft Plan Map published on 24th June 2022.



Legend

- Local Authority Boundaries
- Landscape Character Areas**
- Uplands
- Narrow Upland Glens
- Broad Lowland Valley
- Incised Inland Slopes
- Rugged Coast
- Undulating Lowland Plain
- Smooth Coastal Strip
- Coastal Cliffs
- Urban

Scale 1:35,000

Map produced by the Department of Infrastructure Mapping Service and Cabinet Office Planning Policy
 © Crown Copyright. Department of Infrastructure, Isle of Man.
 Reproduction of map in any form prohibited without prior permission from the publishers.