

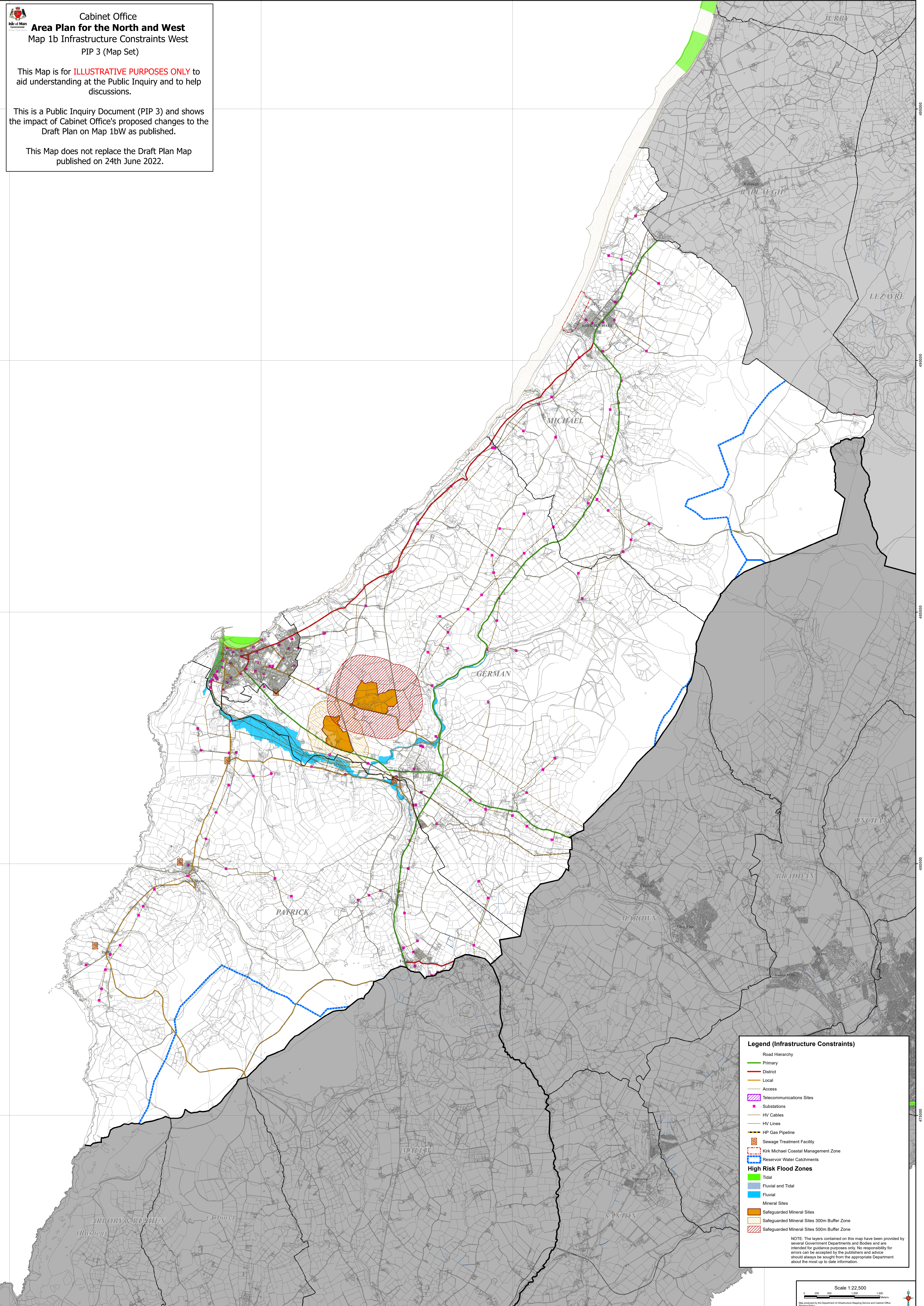


**Cabinet Office**  
**Area Plan for the North and West**  
Map 1b Infrastructure Constraints West  
PIP 3 (Map Set)

This Map is for **ILLUSTRATIVE PURPOSES ONLY** to aid understanding at the Public Inquiry and to help discussions.

This is a Public Inquiry Document (PIP 3) and shows the impact of Cabinet Office's proposed changes to the Draft Plan on Map 1bW as published.

This Map does not replace the Draft Plan Map published on 24th June 2022.



**Legend (Infrastructure Constraints)**

- Road Hierarchy
  - Primary
  - District
  - Local
  - Access
- Telecommunications Sites
- Substations
- HV Cables
- HV Lines
- HP Gas Pipeline
- Sewage Treatment Facility
- Kirk Michael Coastal Management Zone
- Reservoir Water Catchments

**High Risk Flood Zones**

- Tidal
- Fluvial and Tidal
- Fluvial

**Mineral Sites**

- Safeguarded Mineral Sites
- Safeguarded Mineral Sites 300m Buffer Zone
- Safeguarded Mineral Sites 500m Buffer Zone

NOTE: The layers contained on this map have been provided by several Government Departments and Bodies and are intended for guidance purposes only. No responsibility for errors can be accepted by the publishers and advice should always be sought from the appropriate Department about the most up to date information.

Scale 1:22,500

Map produced by the Department of Infrastructure, Mapping Service and Cabinet Office  
© Crown Copyright, Department of Infrastructure, Isle of Man.  
Reproduction of this map is prohibited without prior permission from the publishers.