

**Cabinet Office**  
**Area Plan for the North and West**  
**Map 1b Infrastructure Constraints North**  
**PIP 3 (Map Set)**

This Map is for **ILLUSTRATIVE PURPOSES ONLY** to aid understanding at the Public Inquiry and to help discussions.

This is a Public Inquiry Document (PIP 3) and shows the impact of Cabinet Office's proposed changes to the Draft Plan on Map 1bN as published.

This Map does not replace the Draft Plan Map published on 24th June 2022.

485000

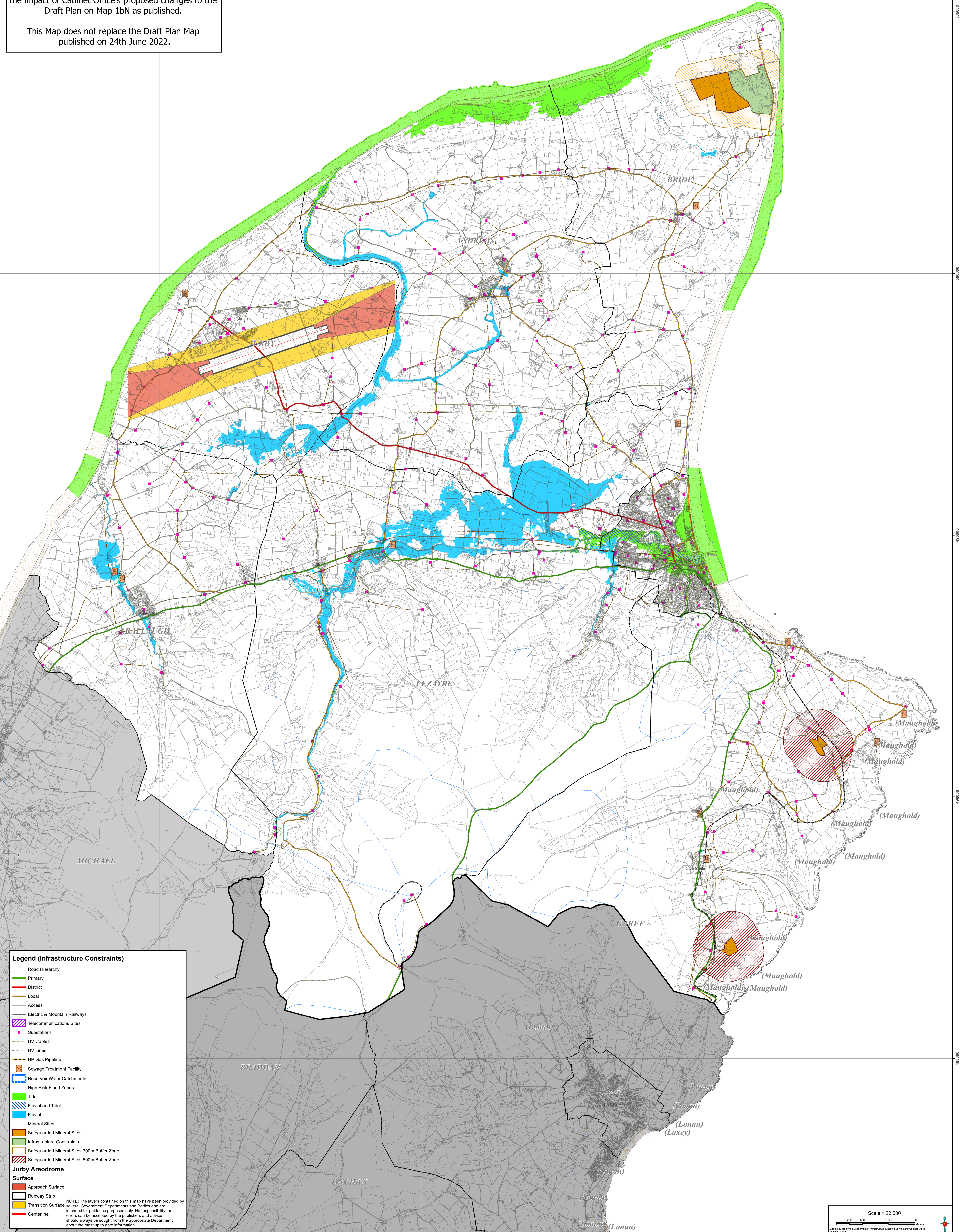
490000

495000

500000

505000

510000



**Legend (Infrastructure Constraints)**

- Road Hierarchy
  - Primary
  - District
  - Local
  - Access
- Electric & Mountain Railways
- Telecommunications Sites
- Substations
- HV Cables
- HV Lines
- HP Gas Pipeline
- Sewage Treatment Facility
- Reservoir Water Catchments
- High Risk Flood Zones
  - Tidal
  - Fluvial and Tidal
  - Fluvial
- Mineral Sites
  - Safeguarded Mineral Sites
  - Infrastructure Constraints
  - Safeguarded Mineral Sites 300m Buffer Zone
  - Safeguarded Mineral Sites 500m Buffer Zone
- Jurby Aerdrome Surface**
  - Approach Surface
  - Runway Strip
  - Transition Surface
  - Centerline

NOTE: The layers contained on this map have been provided by several Government Departments and Bodies and are intended for guidance purposes only. No responsibility for errors can be accepted by the publishers and advice should always be sought from the appropriate Department about the most up to date information.

Scale 1:22,500

Map produced by the Department of Infrastructure, Mapping Services and Cabinet Office.  
 © Crown Copyright, Department of Infrastructure, Isle of Man.  
 Reproduction of this map is prohibited without prior permission from the publishers.

485000

490000

495000

500000

505000

510000