

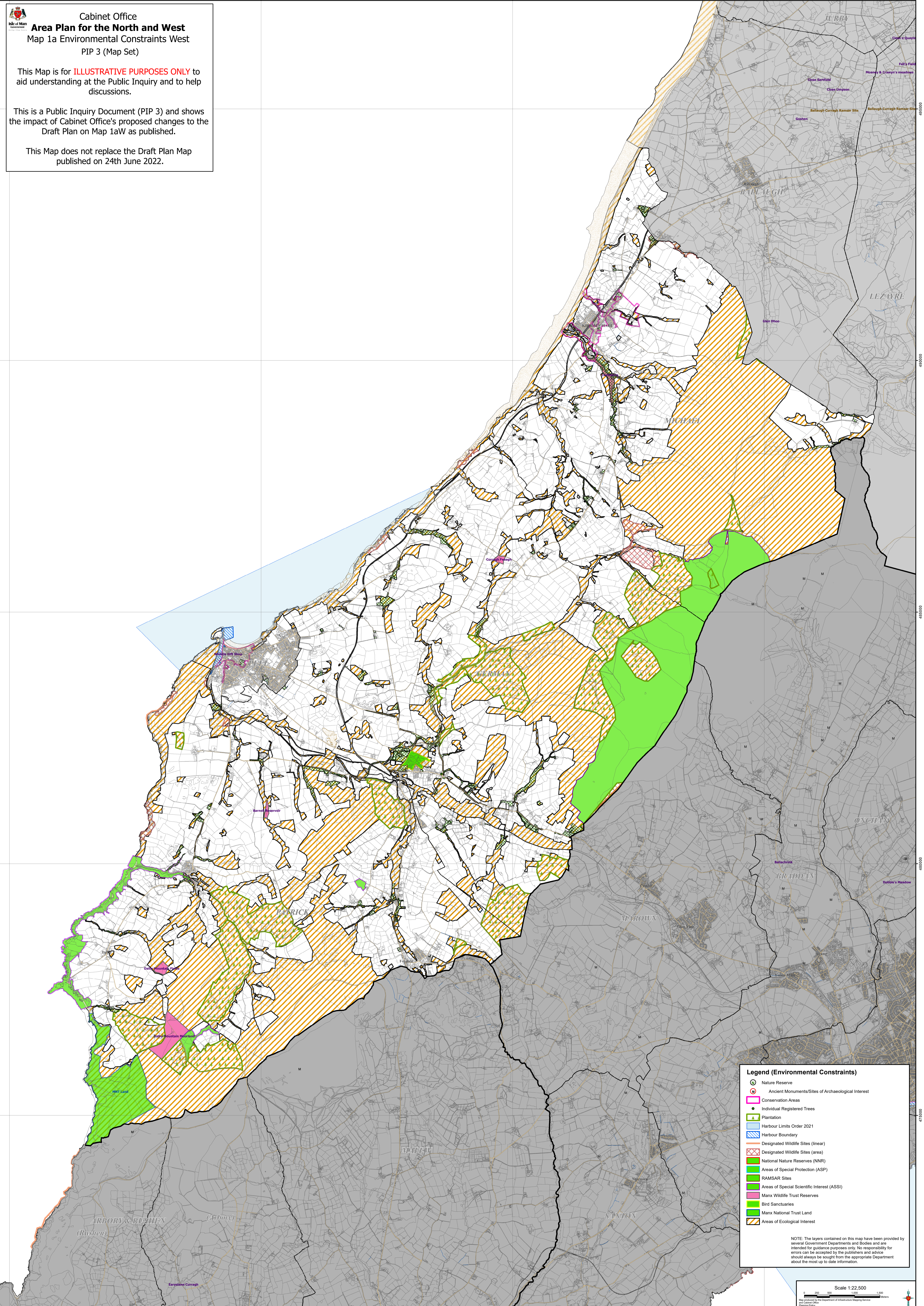


Cabinet Office Area Plan for the North and West Map 1a Environmental Constraints West PIP 3 (Map Set)

This Map is for **ILLUSTRATIVE PURPOSES ONLY** to aid understanding at the Public Inquiry and to help discussions.

This is a Public Inquiry Document (PIP 3) and shows the impact of Cabinet Office's proposed changes to the Draft Plan on Map 1aW as published.

This Map does not replace the Draft Plan Map published on 24th June 2022.



Legend (Environmental Constraints)

- Nature Reserve
- Ancient Monuments/Sites of Archaeological Interest
- Conservation Areas
- Individual Registered Trees
- Plantation
- Harbour Limits Order 2021
- Harbour Boundary
- Designated Wildlife Sites (linear)
- Designated Wildlife Sites (area)
- National Nature Reserves (NNR)
- Areas of Special Protection (ASP)
- RAMSAR Sites
- Areas of Special Scientific Interest (ASSI)
- Manx Wildlife Trust Reserves
- Bird Sanctuaries
- Manx National Trust Land
- Areas of Ecological Interest

NOTE: The layers contained on this map have been provided by several Government Departments and Bodies and are intended for guidance purposes only. No responsibility for errors can be accepted by the publishers and advice should always be sought from the appropriate Department about the most up to date information.