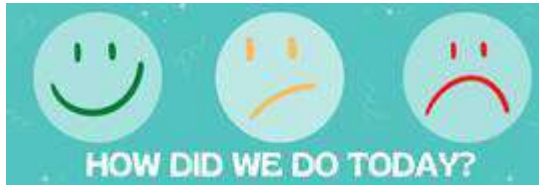


IN THE KNOW: Keeping Staff Informed

Volume 18 (44) November 2023

Struggling to access any of the articles in the bulletin today? Some may be available via [Athens](#) (for eligible library members), you can check [using Google Scholar](#). Article not available via Athens or you don't have a login? [Request the article](#) from the library! Not a member yet? You can [join here](#).

Check out our library [website](#) and our [Twitter](#) for details of all our services, facilities and any forthcoming events.



Do you have feedback about library resources, staff, or spaces? Share it here: <https://www.surveymonkey.com/r/KDFeedback>

In this issue:

IN THE SPOTLIGHT

MANX SKEET

STAFF HEALTH & WELLBEING

HOT OFF THE PRESS

PUBLIC HEALTH

EVIDENCE BASED PRACTICE

SOCIAL AND COMMUNITY CARE

HEALTH MANAGEMENT

PATIENT INFORMATION

LIBRARY BITS AND PIECES

IN THE SPOTLIGHT

[Time to treat the climate and nature crisis as one indivisible global health emergency](#)

[50 papers published, 119 interventions tested, but little consensus | School of Public Health](#)

[The BMJ investigates concerns over informed consent for pregnant women in Pfizer's RSV vaccine trial](#)

STAFF HEALTH & WELLBEING

[Physician burnout reduced with peer support, study finds](#)

[Take care: of yourself and the NHS](#)

Useful links

[**Patient.co.uk**](#)

[**NHS Website**](#)

[**Mental Health Foundation**](#)

[**World Health Organisation**](#)



MANX SKEET

[The £53m a Year Question](#)

[Partnership launched to support new and expectant parents](#)

[Almost 50 have breast clinic appointments cancelled](#)

[Safeguarding Week coming up](#)

[Survey launched on children's oral health habits](#)

[Sam Brand: Those with Diabetes should be able to 'thrive' and 'dream'](#)

['Ask for Angela' if you're feeling unsafe at licensed premises](#)

[Safeguarding Week to shine spotlight on Island issues](#)

[How successful has the medicinal cannabis dispensing trial been?](#)

[Are you interested in training to be a nurse?](#)

HOT OFF THE PRESS

BBC News

[Indi Gregory: Critically ill baby dies after life-support turned off](#)

[Overseas doctors will remain 'crucial' despite recruitment drive - regulator](#)

[NHS board named in Glasgow hospital corporate homicide probe](#)

[Child death rates on the rise in England](#)

[Warning a child could die due to illegal drugs in vapes](#)

[NHS struggling to open extra winter beds and fill staffing gaps](#)

[Give toddlers chickenpox jab, advisers tell NHS](#)

[NHS England promises to eliminate cervical cancer by 2040](#)

[The online black market cashing in on weight loss jab hype](#)

[Medical cannabis: Parents 'denied it turn to illegal means for children'](#)

[Casgevy: UK approves gene-editing drug for blood disorders](#)

[Thousands at risk of poor home care because of low fees](#)

[More women to get contraceptive pill from chemists in England](#)

[Most NHS maternity units not safe enough, says regulator](#)

[My pre-death grief over husband's dementia](#)

[Nottingham maternity units still failing some patients, says review leader](#)

[More illness among young affecting work ability](#)

[NHS talking therapy recommended for menopause symptoms](#)

[My anxiety is back since ADHD medication ran out](#)

Useful Health Links

[NHS Website: A-Z of health conditions](#)

[NHS Website](#)

[Check NHS standards near you](#)

[Cancer Help UK](#)

[British Heart Foundation](#)

[Health and Care Professions Council](#)

[Mental Health Foundation](#)

[General Medical Council](#)

[Nursing and Midwifery Council](#)

[Care Quality Commission](#)

[NICE](#)

[NHS Scotland](#)

[Health in Wales](#)

[NI Direct](#)

[Clinical trials information](#)

[Diabetes UK](#)

[British Lung Foundation](#)

[National Obesity Forum](#)

Critical Thinking

Do you believe everything you read? Is there truth behind the headlines? Why does false information spread so fast on social media? What can you do to make sure you don't get taken in? Start by looking up the stories on websites such as the ones below:

[BBC Reality Check](#)

[Ferret Fact Service](#)

[Full fact](#)

[British Heart Foundation – Behind the headlines](#)

Misinformation

Do you keep a look out for misinformation circulating online? Do you know the impact it could have on patients? How do you counter it?

[A Systematic Review Of COVID-19 Misinformation Interventions: Lessons Learned](#)

[50 papers published, 119 interventions tested, but little consensus | School of Public Health](#)

Bulletins

(click to open)

[Bulletin for clinical commissioning groups
\(CCGs\)](#)

[Chief Nursing Bulletin](#)

[Healthcare Science Bulletin](#)

[Compassion in Practice strategy and 6Cs
Live!](#)

[Liaison and Diversion Bulletin](#)

[Pharmacy and Medicines Bulletin](#)

[Primary Care Bulletin](#)

[Specialised Commissioning Stakeholder
Bulletin](#)

[Revalidation Matters](#)

[Liaison and Diversion Bulletin](#)

[Specialised Commissioning Stakeholder
Bulletin](#)

PUBLIC HEALTH

Addiction

[Press release: £267 million to boost local drug and alcohol treatment](#)



Allergy, Asthma & Clinical Immunology

[Sensitization to avian and fungal proteins in different work environments](#)

[Validation of adult asthma case definitions for primary care sentinel surveillance](#)



Cardiovascular Disease

[Transfusion Cutoff for Patients with Acute Myocardial Infarction and Anemia](#)

[A New Hope for Treatment of Chronic Limb-Threatening Ischemia](#)

[Explaining how a cardiac reflex causes syncope](#)

[The risk factors for and the frequency and outcomes of subsyndromal delirium among patients who have undergone cardiac surgery: a protocol for systematic review and meta-analysis](#)



Complementary Medicine/Alternative Medicine

[For epilepsy, yoga may be good for your mind](#)

[Cranberries for preventing urinary tract infections](#)



Dental

[Dental unit waterline testing practices: an 11-Year retrospective study](#)

[Healthcare workers safety in the COVID-19 era: the impact of pre-pandemic personal protective equipment \(PPE\) training in Pakistan](#)

[UK soft drinks levy linked to fall in child hospital admissions for tooth extraction](#)

Diabetes

[Research suggests prenatal exposure to cannabis increases diabetes risk in offspring](#)

[Relieving stress in insulin-producing cells protects against type 1 diabetes](#)

[What are the perceptions and concerns of people living with diabetes and National Health Service staff around the potential implementation of AI-assisted screening for diabetic eye disease? Development and validation of a survey for use in a secondary care](#)

[UK diabetes prevention program may have global impact](#)



Diet, Nutrition and Obesity

[Allergic responses to common foods could significantly increase risk of heart disease, cardiovascular death](#)

[Early life exposure to broccoli sprouts protects against colitis in inflammatory bowel disease](#)

[Clinical trial data suggests prenatal vitamin D reduces a child's risk of asthma](#)

[Credibility of ChatGPT in the assessment of obesity in type 2 diabetes according to the guidelines](#)



Digital Health Technology

[OECD health report defines digital health as emerging health determinant](#)

[Intelligent Ultrasound signs liver research agreement for AI diagnostics](#)

[AI to help boost NHS winter response and prevent avoidable admissions](#)

[Skin Analytics looks to remap patient pathways for cancer diagnoses](#)

Emergency Medicine

[Evaluation of parameters used in echocardiography and ultrasound protocol for the diagnosis of shock etiology in emergency setting](#)

[Evaluation of a newly developed first aid training programme adapted for older people](#)

[The perceived self-efficacy of senior, middle, and operations managers of the incident command system dealing with emergencies and disasters during the COVID-19 pandemic](#)

[Factors affecting the preparedness of Helicopter Emergency Medical Services \(HEMS\) in disasters: a systematic review](#)

[Navigating into the unknown: exploring the experience of exposure to prehospital emergency stressors: a sequential explanatory mixed-methods](#)



End of Life/Palliative Care

[Xerostomia in patients with advanced cancer: a scoping review of clinical features and complications](#)

[Specialist perinatal palliative care: a retrospective review of antenatal referrals to a children's palliative care service over 14 years](#)

[How do navigation programs address the needs of those living in the community with advanced, life-limiting illness? A realist evaluation of programs in Canada](#)

[Nurses' perceptions of the challenges involved in providing of end-of-life care to people with heart failure: a context-based study](#)



Immunisation and Infection

[Salmonella Vaccine Study in Oxford \(SALVO\) trial: protocol for an observer-participant blind randomised placebo-controlled trial of the iNTS-GMMA vaccine within a European cohort](#)

[Independent report: Childhood varicella vaccination programme: JCVI advice, 14 November 2023](#)

[The impact of vaccination and SARS-CoV-2 variants on the virological response to SARS-CoV-2 infections during the Alpha, Delta, and Omicron waves in England](#)

[New UK Hubs to Receive £33m to Improve Vaccine Access in Developing Countries](#)

Inclusion and Diversity

[Equity within IAPT: socio-demographic inequalities in accessing treatment](#)

[Neighborhood disadvantage and autism spectrum disorder in a population with health insurance](#)

[Identifying and Responding to Resistance Around Conversations About Diversity, Equity, and Inclusion](#)

[Growing income inequities in the utilization of healthcare resources, Swedish study finds](#)

Medical Education

[AI in medical education: medical student perception, curriculum recommendations and design suggestions](#)

[Characteristics and quality assessment of online mentoring profile texts in academic medical mentoring](#)

['They say: medical students perceptions of General Practice, experiences informing these perceptions, and their impact on career intention--a qualitative study among medical students in England](#)

[How can peer teaching influence the development of medical students? a descriptive, longitudinal interview study](#)

Men's Health

[Diabetes drug for prostate cancer? Study provides clarity](#)

[187 new genetic variants linked to prostate cancer found in largest, most diverse study of its kind](#)

[New study finds association between insecticide exposure and lower sperm concentration in adult men](#)

[As suicide rates climb, older men are most vulnerable](#)

Mental Health



[Brain imaging identifies biomarkers of mental illness](#)

[Study shows link between mental and physical health](#)

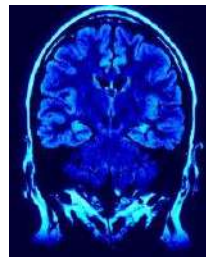
[Reducing stigma and sickness absence: can a low intensity psychological intervention help us 'Prevail'?](#)

[Psychosocial interventions for survivors of human trafficking: a realist review](#)

[US men die 6 years before women, as life expectancy gap widens](#)

[Genetic testing could greatly benefit patients with depression, save health system millions](#)

[Early-life stress changes more genes in brain than a head injury](#)



Neurology

[Actinomyces meyeri-induced brain abscess in pregnancy: a case report](#)

[Real-world evidence of fremanezumab for treating migraine in Japan: a retrospective study](#)

[Association between physical activity and health literacy in patients with Parkinson's disease: an online web survey](#)

[Developing and externally validating a machine learning risk prediction model for 30-day mortality after stroke using national stroke registers in the UK and Sweden](#)

[Characteristics and predictors of stroke mimics in young patients in the norwegian tenecteplase stroke trial \(NOR-TEST\)](#)

Obstetrics

[Comparing proficiency of obstetrics and gynaecology trainees with general surgery trainees using simulated laparoscopic tasks in Health Education England, North-West: a prospective observational study](#)

[Hemihysterectomy in a patient with uterus didelphys, vaginal septum and ipsilateral renal agenesis: A case report and literature review](#)

Oncology



[Developing a theory-driven framework for a web-based intervention to improve transition in childhood cancer survivors: a protocol of realist synthesis](#)

[AI model can help predict survival outcomes for patients with cancer](#)

[Breakthrough in bladder cancer research](#)

[Assessing the burden of HPV-related head and neck cancers in mainland China: protocol of a nationwide, multisite, cross-sectional study](#)

Ophthalmology

[Retinal layers changes in patients with age-related macular degeneration treated with intravitreal anti-VEGF agents](#)

[The role of iron in blindness caused by ocular toxoplasmosis](#)

Orthopaedics

[Reverse shoulder arthroplasty in obstetric brachial plexus injury: our experience with shoulder motion analysis](#)



Paediatrics

[Antibiotics for acute middle ear infection \(acute otitis media\) in children](#)

[Retrospective audit of a school-based integrated health-care model in a specialised school for children with externalising behaviour](#)

[Recurrent otitis media and behaviour problems in middle childhood: A longitudinal cohort study](#)

[Novel pharmacological developments in the management of paediatric inflammatory bowel disease: Time for guideline update – A narrative review](#)

[Candida utilis candidaemia in premature infants: a retrospective single-centre study](#)

[Delaying cord clamping could halve risk of death in premature babies](#)

Pain Medicine/Anaesthesia

[Shoulder Tip Pain After Cesarean Delivery: A Prospective Questionnaire Survey](#)



Pharmacology

[India Pharma Growth Expectations in 2024 the Highest Globally](#)

[Different antibiotics for group A streptococcal pharyngitis](#)

[New UK Hubs to Receive £33m to Improve Vaccine Access in Developing Countries](#)

[Guidance: Pharmacy First contractual framework: 2023 to 2025](#)

Primary Care

[Continuity of care and consultation mode in general practice: a cross-sectional and longitudinal study using patient-level and practice-level data from before and during the COVID-19 pandemic in England](#)

[Registrars unable to complete GP exams as technical fault disrupts SCA](#)

[Critical to care: the role of community interest companies in health and care](#)

Respiratory Medicine

[Clinician views on how clinical decision support systems can help diagnose asthma in primary care: a qualitative study](#)

[Association between asthma, obesity, and metabolic syndrome in adolescents and young adults](#)

[Evaluation of the implementation of evidence-based pediatric asthma exacerbation treatments in a regional consortium of emergency medical Services Agencies](#)



Seniors and Aging

[Spread of drug resistant bacteria linked to patient hand contamination and antibiotic use within nursing homes](#)

[Racial, ethnic disparities in long-term care remain among older adults despite passage of Affordable Care Act: Study](#)

[Development and evaluation of a theory-based health promotion programme aimed at improving retirees psychological well-being and quality of life: a protocol for a mixed-method study](#)

[Cognitive behavioural interventions for reducing fear of falling in older people living in the community](#)

[Wearable devices detect circadian disturbances that predict frailty risk in older adults](#)

Sleep Medicine

[The role of lncRNAs in intermittent hypoxia and sleep Apnea: A review of experimental and clinical evidence](#)

[Sleep-disordered breathing patterns and prognosis in pulmonary arterial hypertension: A Cluster analysis of nocturnal cardiorespiratory signals](#)

[Obstructive sleep apnea and periodic limb movement in children: is there really an association?](#)

Surgery

[Needle-tip electrocautery versus steel scalpel incision in neurosurgery: study protocol for a prospective single-centre randomised controlled double-blind trial](#)

[University of Basel delivers first biological implants for treatment of cartilage lesions and osteoarthritis in humans](#)

[Unexpected impact of preoperative anemia in low-risk isolated coronary artery bypass grafting or single-valve surgical patients: Do not overlook these patients in anemia management!](#)



Vaping/Smoking

[Study finds increasingly popular oral nicotine pouches do little to curb smokers' cravings](#)

Women's Health

[Side-effect avoiding treatment shows early promise against breast cancer in mice](#)

[Paid family leave boosted postpartum wellbeing, breastfeeding rates](#)

[Gonadotrophin-releasing hormone analogues for pain associated with endometriosis](#)

[Women with breast cancer take sexual health into their own hands](#)

World Health Organisation

[Bulletin of the World Health Organization Volume 101\(11\); 2023 Nov 1](#)

[Children with cancer evacuated from Gaza for treatment to Egypt and Jordan](#)

[WHO launches commission to foster social connection](#)

[Germany reaffirms its commitment to WHO and key health priorities](#)

Wound Management

[Electromechanical therapy in diabetic foot ulcers patients: A systematic review and meta-analysis](#)

[Efficacy of lidocaine wet compress combined with red-light irradiation for chronic wounds](#)

[Compression therapies for the treatment of venous leg ulcers: study protocol for a process evaluation in a randomised controlled trial, VenUS 6](#)

[Acts of negotiation: toward a grounded theory of nursing practice in chronic wound care in Austria](#)

SOCIAL AND COMMUNITY CARE

[Cap on care costs: significant risks around plan to deliver delayed reform by 2025, says watchdog](#)

[DHSC rejects experts' plan to curb 'inhumane' solitary confinement of disabled people in hospital](#)

[Responding to children's disclosures of domestic abuse: a three-step approach](#)

[Number of foster care households shrinks for second consecutive year](#)

[Does discrimination play a role in fitness to practise processes?](#)

[Labour pledges to reform Mental Health Act if elected](#)

[Adult social care gets fourth cabinet minister in two years](#)

Key Resources

[Social Care TV](#)

[e-Learning](#)

[Social Care Online](#)

[Research Register for Social Care](#)

[Social Care Research Ethics Committee](#)

[All SCIE resources](#) (SCIE will be discontinued from December 2023)

HEALTH MANAGEMENT

[The state of medical education and practice in the UK: workforce report 2023](#)

[Should a hospital invest toward specializing in an area? Or diversify? The impact of a hospital's portfolio strategy on patient demand](#)

[NHS braced for "toughest winter" – NHS Providers report](#)

[GMC says greater doctor career flexibility can benefit NHS](#)

[Transforming power relationships in partnership working](#)

[What do technology and AI mean for the future of work in health care?](#)

[Take care: of yourself and the NHS](#)

[Patient-initiated follow up: designing it with patients at the centre](#)

[The King's Fund responds to the GMC's workforce report](#)

[How to extend value-based healthcare to population-based healthcare systems? Defining an outcome-based segmentation model for health authority](#)

[The King's Fund responds to ADASS's Autumn Survey results and the Homecare Association report on the funding of older people's homecare](#)

PATIENT INFORMATION

[Workplace-based learning about health promotion in individual patient care: a scoping review](#)

[What are the benefits and risks of health literacy interventions for migrants?](#)

[Determinants of practice for providing decision coaching to facilitate informed values-based decision-making: protocol for a mixed-methods systematic review](#)

[Therapeutic patient education: an introductory guide](#)

EVIDENCE BASED PRACTICE BMJ|Evidence Centre

BMJ Evidence Updates

[Rare case of central congenital hypothyroidism due to a TSH \$\beta\$ mutation presenting with macro-orchidism](#)

[Amantadine withdrawal in a patient with spinocerebellar ataxia](#)

[Two pregnancies in a patient following pulmonary endarterectomy for chronic thromboembolic pulmonary hypertension](#)

[Minimally invasive fenestration for decompression of C2-C3 spinal stenosis](#)

[Atypical hypertrophy of retinal pigment epithelium manifesting as the first sign of familial adenomatous polyposis](#)

[Tibial lengthening for massive distal femoral bone loss](#)

[Chondrosarcoma of the maxilla](#)

[Lung transplant in chronic HIV infection](#)

[Brachial artery aneurysm and bilateral posterior circulation strokes in a young child with tuberous sclerosis complex](#)

[Retrieval of a retained umbilical vein catheter at 6 months](#)

[Blue rubber bleb nevus syndrome in a patient on anticoagulation: a management dilemma](#)



Cochrane

[Treatments for bullous pemphigoid](#)

[Comparison of two treatment options for kidney stones](#)

[Factors for predicting treatment success and severe adverse events of chimeric antigen receptor \(CAR\) T-cell therapy in relapsed or refractory diffuse large B-cell lymphoma](#)

[Pulmonary rehabilitation using minimal equipment for people with chronic obstructive pulmonary disease](#)

[How accurate is artificial intelligence for diagnosing keratoconus?](#)

[Drugs and natural products for self-harm in adults](#)



NICE Clinical Knowledge Summaries provides primary care practitioners with a readily accessible summary of the current evidence base and practical guidance on best practice in respect of over 300 common and/or significant primary care presentations.

The service is being regularly maintained and upgraded as and when significant new evidence emerges and up to 10 new topics will be added each year. You can access the service [here](#).

National Institute for Health Research (NIHR) Health Technology Assessment

[News story: New NIHR Research Delivery Network created](#)

[Cervical cancer: women with HPV may benefit from more intense screening](#)

DoH Press Releases/New Publications

[Chief Medical Officer's annual report 2023: health in an ageing society](#)

LIBRARY "BITS AND PIECES"

Published recently? Completed a research project?

Tell us about it! Fill out our publication or research repository form by clicking [here](#) and we'll display your work on our website

[Publication repository](#)

[Research repository](#)

The above current awareness bulletin has been produced by Keyll Darree Library and Information Service. We aim to produce the bulletin every week. If you need any help locating or accessing any of the items included in this issue, please contact the library staff on 642993/642974.

As usual, we welcome any feedback, so please let us know if you have any comments about format, content, length, arrangement or indeed, any other observations. If you know of anyone else who might like to receive the bulletin, or you would like your name removed from the distribution list, again, please let us know.

Check out our library website at www.librarykeylldarree.gov.im for details of all our services, facilities and any forthcoming events.