

IN THE KNOW: Keeping Staff Informed

Volume 18 (5) February 2023

Check out our library [website](#) and our [Twitter](#) for details of all our services, facilities and any forthcoming events.

Do you have feedback about the library staff or spaces?

Share it here: <https://www.surveymonkey.com/r/KDFeedback>

In this issue:

IN THE SPOTLIGHT

MANX SKEET

STAFF HEALTH & WELLBEING

HOT OFF THE PRESS

PUBLIC HEALTH

EVIDENCE BASED PRACTICE

SOCIAL AND COMMUNITY CARE

HEALTH MANAGEMENT

PATIENT INFORMATION

LIBRARY BITS AND PIECES

IN THE SPOTLIGHT

[Transgender Women Athletes and Elite Sport: A Scientific Review](#)

[More than 500,000 people in UK 'will be diagnosed with cancer each year by 2040'](#)

STAFF HEALTH & WELLBEING

['Smoke alarms save lives', says fire service after cupboard fire](#)

[Police warn of scam email](#)

['Absolutely vital' for minimum wage to reach living wage - Treasury Minister](#)

[Mocktails or cocktails? Having a sense of purpose in life can keep binge drinking at bay](#)

Useful links

[**Patient.co.uk**](#)

[**NHS Website**](#)

[**Mental Health Foundation**](#)

[**World Health Organisation**](#)



MANX SKEET

[Staffing Crisis Laid Bare](#)

[Overnight patients kept in ED, due to lack of beds](#)

[Hospital's OPEL levels help to manage and redistribute resources](#)

[Isle of Man cost of living 36 per cent cheaper than London says comparison website](#)

[More than 40% of calls unanswered at three GP practices](#)

[Improving Children's Dental Health](#)

[Craig's Heartstrong Foundation launches 'Defibuary' campaign](#)

[New bingo game to help people live long lives](#)

[Ballasalla Medical Centre: patients urged to stay put as practice set to hand back contract](#)

[Suicide prevention strategy by the end of March?](#)

[New Island business offers direct cremation only](#)

[Dispose of graphic leaflets if they're causing distress](#)

[Mental health and safeguarding lead leaves Manx Care](#)

[Nursing stats 'paint a clear picture of staffing challenges facing Manx Care'](#)

[Increase in complaints about people smoking and vaping on buses](#)

HOT OFF THE PRESS
BBC News

['The Whale gives a voice to people like me'](#)

[Folic acid in flour too low to prevent birth defects, scientists say](#)

[Avian flu spills over from birds to mammals in UK](#)

[Cost of living: Man gives £10,000 to charity after seeing woman's story on the BBC](#)

[Transplant boy's family would take legal action over law delay](#)

[Mr Beast: Why has YouTuber faced criticism for blind surgery video?](#)

[Ian Paterson: Further 1,500 patients to be recalled](#)

[North East ambulance staff lacked critical medicines, CQC finds](#)

[Ambulance workers to strike on 10 February](#)

[Jess Hodgkinson: Lack of medication contributed to mother's death](#)

[Cancer: Urgent action needed amid NHS pressures, warns charity](#)

[Cannock twin's tumour awareness bid after brother's death](#)

[Bethany Shipsey: Parents welcome toxic DNP reclassification to poison](#)

[Cost of living: One in five eating food beyond use-by date](#)

[Woman died after walking out of Priory Hospital Arnold](#)

[Experts warn over vaping packaging](#)

[Bridlington man repairs tooth with plastic and super glue](#)

[Mistley rugby player ends up in hospital due to dog poo](#)

[Thousands of NHS staff with long Covid risk losing their pay](#)

[£1bn boost in hospital beds and ambulance fleet](#)

[The new tech offering relief from the misery of period pain](#)

[NHS: More at-home care offered in bid to shorten hospital wait times](#)

['I couldn't read or write but now I'm saving lives'](#)

[Could a fungal pandemic turn us all into zombies?](#)

[US to make it easier for gay men to donate blood](#)

[Cost of living with food allergies becoming 'unbearable'](#)

[Hundreds of NHS buildings contain asbestos, says TUC](#)

[Toxic slimming pill drug DNP to be declared poison](#)

[Keir Starmer on Rod Stewart offering to pay for medical scans](#)

[Infected blood scandal: Inquiry hears Belfast Trust apology](#)

[Infected blood scandal: Five facts we have learned](#)

['A blood test saved my life' says young cancer patient](#)

[Congleton mum's brain tumour detected week after baby born](#)

Useful Health Links

[NHS Website: A-Z of health conditions](#)

[NHS Website](#)

[Check NHS standards near you](#)

[Cancer Help UK](#)

[British Heart Foundation](#)

[Health and Care Professions Council](#)

[Mental Health Foundation](#)

[General Medical Council](#)

[Nursing and Midwifery Council](#)

[Care Quality Commission](#)

[NICE](#)

[NHS Scotland](#)

[Health in Wales](#)

[NI Direct](#)

[Clinical trials information](#)

[Diabetes UK](#)

[British Lung Foundation](#)

[National Obesity Forum](#)

Critical Thinking

Do you believe everything you read? Is there truth behind the headlines? Why does false information spread so fast on social media? What can you do to make sure you don't get taken in? Start by looking up the stories on websites such as the ones below:

Full fact <https://fullfact.org/>

Ferret Fact Service
<https://theferret.scot/ferret-fact-service/>

BBC Reality Check
https://www.bbc.co.uk/news/reality_check

Misinformation

Do you keep a look out for misinformation circulating online? Do you know the impact it could have on patients? How do you counter it?

[State medical board charges physician with spreading COVID-19 misinformation](#)

Bulletins

(click to open)

[Bulletin for clinical commissioning groups \(CCGs\)](#)

[Chief Nursing Bulletin](#)

[Chief Scientific Officer Bulletin](#)

[Compassion in Practice strategy and 6Cs Live!](#)

[Liaison and Diversion Bulletin](#)

[Pharmacy and Medicines Bulletin](#)

[Primary Care Bulletin](#)

[Specialised Commissioning Stakeholder Bulletin](#)

[Revalidation Matters](#)

[Liaison and Diversion Bulletin](#)

[Specialised Commissioning Stakeholder Bulletin](#)



PUBLIC HEALTH

Health e-News Bulletin/NLH Public Health Newsletter

Addiction

[Changes in HIV incidence in people who inject drugs in Ireland from 2000 to 2018: longitudinal observational study](#)

[Striatal dopamine D2 receptor availability as a predictor of subsequent alcohol use in social drinkers](#)

Cardiovascular Disease



[Are Exercise Amount and Intensity Related to Atherosclerosis Risk?](#)

[Gender Trends in Cardiothoracic Surgery Authorship](#)

Critical Care

[Extracorporeal CPR for refractory out-of-hospital cardiac arrest](#)

[Higher protein dosing in critically ill patients with high nutritional risk](#)

[Extracorporeal cardiopulmonary resuscitation](#)

Dental



[Unusual gingival actinomycosis post allogeneic hematopoietic stem-cell transplant: case report](#)

[Evaluating the impact of patient-reported outcome measures on depression and anxiety levels in people with multiple sclerosis: a study protocol for a randomized controlled trial](#)

[The impact of smoking on periodontitis patients' GCF/serum cytokine profile both before and after periodontal therapy: a meta-analysis](#)

Dementia

[Dementia diagnosis drive](#)

[A Web-Based Decision Aid for Caregivers of Persons With Dementia With Firearm Access \(Safe at Home Study\): Protocol for a Randomized Controlled Trial](#)

Diabetes

[Rapid rollout sees 200,000 diabetes patients get life changing devices](#)

[Type 2 diabetes drug shown to reduce major cardiovascular events in men more than women](#)



Diet, Nutrition and Obesity

[A Logical Framework \(MYGERYFS\) for Hospital Foodservice to Prevent Malnutrition Among Geriatric Patients in Hospitals, Malaysia: Protocol for a Feasibility Study](#)

[Impact of 'hyper-palatable' foods across four diets](#)

[Coffee with milk may have an anti-inflammatory effect](#)



End of Life Care

[Monitoring the clinical practice of palliative sedation \(PALSED\) in patients with advanced cancer: an international, multicentre, non-experimental prospective observational study protocol](#)



Immunisation and Infection

[Voice-Based Screening for SARS-CoV-2 Exposure in Cardiovascular Clinics \(VOICE-COVID-19-II\): Protocol for a Randomized Controlled Trial](#)

[Genome-based typing reveals rare events of patient contamination with Pseudomonas aeruginosa from other patients and sink traps in a medical intensive care unit](#)

[Outcomes of Omicron sub-lineages BA.1.1 and BA.2 infection compared with the sub-lineage BA.1 infection in emergency departments' patients](#)

Inequality

[When will the government and national agencies act to ensure that ethnicity coding in health records is fit for purpose?](#)

Learning Disability

[Comparison of the Effectiveness of Executive Function Training and Intervention Based on Cognitive Games on Reading Performance in Elementary Students](#)

[Speech/Language Impairment or Specific Learning Disability? Examining the Usage of Educational Categories](#)



Men's Health

[Dietary trends and the decline in male reproductive health](#)

[Understanding the Association of Older Adult Fall Risk Factors by Age and Sex Through Factor Analysis](#)

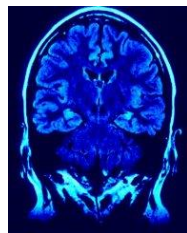


Mental Health

[Catatonia in neurodevelopmental disorders: assessing catatonic deterioration from baseline](#)

[Clinical effectiveness of active Alpha-Stim AID versus sham Alpha-Stim AID in major depression in primary care in England \(Alpha-Stim-D\): a multicentre, parallel group, double-blind, randomised controlled trial](#)

[The relevance of long-acting injectables in the treatment of schizophrenia](#)



Neurology

[Wearable sensor-based gait analysis to discriminate early Parkinson's disease from essential tremor](#)

[Gene-environment interactions increase the risk of paediatric-onset multiple sclerosis associated with household chemical exposures](#)

Obstetrics

[Primary Caesarean scar choriocarcinoma: A case series and literature review](#)

[Knowledge, attitudes, and practices of prenatal care practitioners regarding oral health in pregnancy – a systematic review](#)



Oncology

[International Atomic Energy Agency safety missions to Fukushima](#)

[Recommendations on the use of item libraries for patient-reported outcome measurement in oncology trials: findings from an international, multidisciplinary working group](#)

[Pseudoprogession of a cutaneous lung cancer metastasis](#)

Ophthalmology

[Researchers unravel why episodes of low blood sugar worsen eye disease in people with diabetes](#)

[Research challenges 'sugar hypothesis' of diabetic cataract development](#)

Orthopaedics

[Comparison of single taper and dual taper versions of the same stem design in total hip arthroplasty for primary osteoarthritis](#)



Paediatrics

[Thyroid function and long-term outcomes of children born to mothers with Graves' disease: A 20-year review](#)

[Safety and efficacy of gene therapy with onasemnogene abeparvovec in the treatment of spinal muscular atrophy: A systematic review and meta-analysis](#)

[Love in the time of COVID: The value of the hug](#)

Pain Medicine

[Putting anaesthetic emissions to bed](#)

[Stellate ganglion block catheters for refractory electrical storm: a retrospective cohort and care pathway](#)



Pharmacology

[Airnov displays its latest desiccant closure system at Pharmapack](#)

[Polyplastics to exhibit acetal materials at Pharmapack and MD&M West](#)



Seniors and Aging

[Social isolation, loneliness increase risk for heart failure](#)

[Will revitalizing old blood slow aging?](#)

[Geriatric fracture program reduces length of hospital stay](#)



Sexual Health

[A Text Messaging–Based Support Intervention to Enhance Pre-exposure Prophylaxis for HIV Prevention Adherence During Pregnancy and Breastfeeding: Protocol for a Randomized Controlled Trial](#)

[Introduction to the Demographics and Reproductive Health Needs of Transgender and Nonbinary People](#)

[A Scoping Review of Nonconsensual Condom Removal \(“Stealth”\) Research](#)

Sleep Medicine

[Fetal and infant growth patterns, sleep, and 24-h activity rhythms: a population-based prospective cohort study in school-age children](#)

[An exploratory study of sleep habits in school-aged survivors of retinoblastoma](#)

[Association between obstructive sleep apnea and thyroid function: A 10-year retrospective study](#)

[Validity of in-lab and home respiratory polygraphy for detecting obstructive sleep apnea in children](#)



Sports Medicine/Fitness

[Association between the level of partial foot amputation and gait: a scoping review with implications for the minimum impairment criteria for wheelchair tennis](#)

[Effect of sport on health in people aged 60 years and older: a systematic review with meta-analysis](#)

[Longitudinal study of six seasons of match injuries in elite female rugby union](#)

Surgery

[Clinical utility of a deep learning mortality prediction model for cardiac surgery decision-making](#)

[Worse survival in patients with right ventricular dysfunction and COVID-19–associated acute respiratory distress requiring extracorporeal membrane oxygenation: A multicenter study from the ORACLE Group](#)



Vaping/Smoking

[E-cigarette cessation and transitions in combusted tobacco smoking status: Longitudinal findings from the US FDA PATH Study](#)

[E-cigarette product preferences of Australian adolescent and adult users: a 2022 study](#)



Women's Health

[Does lifetime exposure to estrogen affect risk of stroke?](#)

[Predicting two common heart conditions](#)

World Health Organisation

[WHO Bulletin Feb 2022](#)

[African leaders unite in pledge to end AIDS in children](#)

[Dr Jarbas Barbosa elected as WHO Regional Director for the Americas](#)

[WHO holds an inaugural meeting of the new Youth Council](#)

[More countries eliminate neglected tropical diseases but investments key to sustain progress](#)

[Statement on the fourteenth meeting of the International Health Regulations \(2005\) Emergency Committee regarding the coronavirus disease \(COVID-19\) pandemic](#)

[WHO updates critical medicines list for radiological and nuclear emergencies](#)

Wound Management

[Experience with a New Negative Pressure Incisional Wound Management System in Cardiac Surgery](#)

[The effect of head of bed elevation on sacral and heel subepidermal moisture in healthy adults: A randomised crossover study](#)

[Ten years of Charcot: what have we learned?](#)

[Fat Grafting for Foot Fat Pad Atrophy](#)

SOCIAL AND COMMUNITY CARE

[Who cares? The experience of social care workers, and the enforcement of employment rights in the sector](#)

[Children are in 'extreme crisis': top judge berates DfE's six-year failure to tackle lack of secure units](#)

[Independent reviewing officer role saved in DfE care review response](#)

[Care review lead: government must go further and faster in response](#)

[What About Social Justice? Engaging in Environmental Justice Work](#)

[DfE provides 20% of funding urged by care review in response](#)

[Specialist child protection social workers to be introduced in DfE care review response](#)

[Social Work England finds broad support for proposed expectations of new graduates](#)

[The family safeguarding pioneers, eight years on](#)

[Unions seek 12.7% pay rise for council social workers](#)

[Book Review—Prince Harry's Spare: The Impact of Long Denied Trauma, Emotional Abuse](#)

[40% of people delayed in hospital awaiting social care package](#)

[What pay rises have social workers received in 2022-23?](#)

Key Resources

[Social Care TV](#)

[e-Learning](#)

[Social Care Online](#)

[Research Register for Social Care](#)

[Social Care Research Ethics Committee](#)

[All SCIE resources](#)

HEALTH MANAGEMENT

[What did we learn from our development work with primary care networks in 2022?](#)

[Delivery plan for recovering urgent and emergency care services](#)

[Department of Health and Social Care annual report and accounts: 2021-22](#)

[Basis of negotiation: recommendations to improve the NHS pay review process](#)

[Specialised services and system working](#)

[Clinical academics in the NHS inquiry](#)

[Making diamonds out of sausages](#)

[More people have started vital treatment for cancer](#)

[Primary Care Physicians Increasingly Treat Mental Health Concerns](#)

[An NHS in crisis: patients are now waiting longer for almost every type of emergency care](#)

[Portsmouth Hospitals University NHS Trust expands community breast screening for patients with restricted mobility](#)

[E-zec and ERS Medical merger announced](#)

[Migraine Associated with Increased Risk for Pregnancy Complications](#)

[Does it matter that people are opting out of the NHS into private treatment?](#)

[The great team: A recipe](#)

BMJ Evidence Updates

- [Extragastrointestinal stromal tumour of the transverse mesocolon mimicking giant ovarian cystic neoplasm](#)
- [Long-term survivor of giant pancreatic solid pseudopapillary neoplasm with splenic infiltration and lymph node metastasis](#)
- [Osteochondral impression fracture of the patella after sports collision injury](#)
- [Amelioration of trichotillomania with onabotulinumtoxinA for chronic migraine](#)
- [Cavernous sinus and jugular thromboses, base of skull osteomyelitis and cranial nerve palsies: catastrophic complications of sphenoid sinusitis](#)
- [Spontaneous rupture of a solitary oligometastatic hepatic melanoma](#)
- [Fibroepithelial urethral polyp with minor prostatic glands in an older man](#)
- [Flecainide toxicity: ECG changes associated with supratherapeutic levels in milk-fed infants](#)
- [Myofibroma mimicking peripheral nerve sheath tumour with ulnar nerve compression symptoms](#)
- [Bilateral renal aspergillosis with a fungal cast masquerading as renal malignancy](#)
- [Protocol for treating lumbar spinal canal stenosis with a combination of ultrapurified, allogenic bone marrow-derived mesenchymal stem cells and in situ-forming gel: a multicentre, prospective, double-blind randomised controlled trial](#)
- [Presence of symptoms 6 weeks after COVID-19 among vaccinated and unvaccinated US healthcare personnel: a prospective cohort study](#)
- [Estimating the prevalence of non-cervical human papillomavirus infection in mainland China \(PROGRESS-Plus\): protocol of a national cross-sectional study](#)
- [COVID-19 vaccine hesitancy among Nigerians living with non-communicable diseases: a qualitative study](#)
- [Management and outcomes of intracranial fungal infections in children and adults in Africa: a scoping review protocol](#)
- [Neurology care and the long-term outcomes of atrial fibrillation-related ischaemic stroke in China: median 3-year outcome from a high volume academic tertiary hospital](#)
- [Co-developing patient and family engagement indicators for health system improvement with healthcare system stakeholders: a consensus study](#)
- [Qualitative examination of collaboration in team-based primary care during the COVID-19 pandemic](#)



Cochrane

[A comparison of active cycle of breathing technique \(ACBT\) with other methods of airway clearance therapies in people with cystic fibrosis](#)

[Treatment of dental and orthodontic problems in thalassaemia](#)

[What are the benefits and risks of erythromycin given before endoscopy for people with intestinal bleeding?](#)

[Is plasma from the blood of people who have recovered from COVID-19 an effective treatment for other people with COVID-19?](#)

[Liver and spleen stiffness for the diagnosis of oesophageal varices in adults with chronic liver disease](#)

[Antiepileptic drugs for treating seizures in people with brain tumours](#)

[Local steroid injection for carpal tunnel syndrome](#)

[Can cognitive stimulation benefit people with dementia?](#)

[Endovascular treatment for thromboangiitis obliterans \(Buerger's disease\)](#)

[Do physical measures such as hand-washing or wearing masks stop or slow down the spread of respiratory viruses?](#)

[Treatments for acute central retinal artery occlusion \(blockage of the blood supply to the retina of the eye\)](#)

[Immunosuppressive and immunomodulatory therapies for idiopathic inflammatory myopathies](#)

NICE Clinical Knowledge Summaries provides primary care practitioners with a readily accessible summary of the current evidence base and practical guidance on best practice in respect of over 300 common and/or significant primary care presentations.

The service is being regularly maintained and upgraded as and when significant new evidence emerges and up to 10 new topics will be added each year. You can access the service [here](#).

National Institute for Health Research (NIHR) Health Technology Assessment

[Online CBT for post-traumatic stress disorder is as effective as face-to-face therapy](#)

DoH Press Releases/New Publications

[Press release: Health and Social Care Secretary meets MND researchers to accelerate search for cure](#)

[Press release: £53 million cash boost to improve housing support for drug and alcohol recovery](#)

[Press release: New strategy to boost NHS access to innovative medical technology](#)

[Guidance: General practice workforce estimates by constituency: 2019 to 2022](#)

[Guidance: Medicines eligible for Northern Ireland MHRA Authorised Route](#)

[Policy paper: The impact of body image on mental and physical health: government response](#)

[Guidance: Adult social care in England statistics: background quality and methodology](#)

[Official Statistics: Adult social care in England, monthly statistics: February 2023](#)

[Guidance: Market Sustainability and Fair Cost of Care Fund 2022 to 2023: guidance](#)

LIBRARY "BITS AND PIECES"

Published recently? Completed a research project?

Tell us about it! Fill out our publication or research repository form by clicking [here](#) and we'll display your work on our website

[Publication repository](#)

[Research repository](#)

The above current awareness bulletin has been produced by Keyll Darree Library and Information Service. We aim to produce the bulletin every week. If you need any help locating or accessing any of the items included in this issue, please contact the library staff on 642993/642974.

As usual, we welcome any feedback, so please let us know if you have any comments about format, content, length, arrangement or indeed, any other observations. If you know of anyone else who might like to receive the bulletin, or you would like your name removed from the distribution list, again, please let us know.

Check out our library website at www.librarykeylldarree.gov.im for details of all our services, facilities and any forthcoming events.