

IN THE KNOW: Keeping Staff Informed

Volume 18 (3) January 2023

Check out our library [website](#) and our [Twitter](#) for details of all our services, facilities and any forthcoming events.

Do you have feedback about the library staff or spaces?

Share it here: <https://www.surveymonkey.com/r/KDFeedback>

In this issue:

IN THE SPOTLIGHT

MANX SKEET

STAFF HEALTH & WELLBEING

HOT OFF THE PRESS

PUBLIC HEALTH

EVIDENCE BASED PRACTICE

SOCIAL AND COMMUNITY CARE

HEALTH MANAGEMENT

PATIENT INFORMATION

LIBRARY BITS AND PIECES

IN THE SPOTLIGHT

[The Impact of Mask Mandates on Face Mask Use During the COVID-19 Pandemic: Longitudinal Survey Study](#)

[The Effect of the COVID-19 Pandemic on Digital Health–Seeking Behavior: Big Data Interrupted Time-Series Analysis of Google Trends](#)

STAFF HEALTH & WELLBEING

[Why improved acoustic performance is crucial for healthcare spaces](#)

[Female doctors must be better supported through menopause to avoid exodus](#)

[Stretches to Do at Work Every Day](#)

[Perceived strategies for reducing staff-turnover and improving well-being and retention among professional caregivers in Alberta’s continuing-care facilities: A qualitative study](#)

Useful links

[**Patient.co.uk**](#)

[**NHS Website**](#)

[**Mental Health Foundation**](#)

[**World Health Organisation**](#)



MANX SKEET

[Manx Care planning for tomorrow after experiencing 'critical staffing pressures'](#)

[Civil Defence helps Hospice amid adverse weather](#)

[Hospice nurses get help from Civil Defence](#)

['Clinical Navigators' to be placed within Emergency Services Joint Control Room](#)

[Knottfield: Child abuse ordeal has left 'black mark' on Island](#)

[Healthcare providers hoping to eliminate 'bed blockers' term](#)

[Who is Your People's Champion?](#)

[Cannan: 'We are truly sorry for Knottfield mistakes'](#)

[Government launches 'get online centre' to tackle digital exclusion](#)

[Mother's frustration after daughter 'lost two years' of ADHD treatment](#)

[Manx Care reports an increase in activity across all urgent and emergency care services](#)

[Former medical director 'unlikely to work again'](#)

[No Evidence Docs Were Faked](#)

[Local charity receives grant towards its 'Winter Wellness Workshops'](#)

[Government workshops to help improve gender identity services](#)

[Call for more support in schools for students with post-viral fatigue](#)

HOT OFF THE PRESS
BBC News

[Are nurses striking in your area?](#)

[Sidney Box's family praise community after 93-year-old's death](#)

[Cost of living: Charity warns of mental health pandemic](#)

['Doctors discuss my daughter like she's nothing'](#)

[Antidepressants exit must happen in stages, says medical watchdog](#)

[Why are NHS staff striking and what should patients do?](#)

[New nurse strike dates as union escalates dispute](#)

[Transgender people lose NHS waiting times High Court case](#)

[Basildon Hospital maternity staff exposed to 30 times legal gas limit](#)

[NHS crisis: The medics trying to fix the health service](#)

[Ambulance strike cover insufficient, says health secretary](#)

[NHS: More Wales strike dates to be announced - nurses' leader](#)

[Pancreatic cancer: What losing my wife taught me about life and loss](#)

[Nurses' strike: Union says next one will be twice as big](#)

[HRT could cut Alzheimer's risk in some women - early study](#)

[Ros Atkins on... social care's impact on the NHS crisis](#)

[Feel good lower fat chocolate clue](#)

[Hartlepool Ambulance: Charity volunteers help people in need](#)

[Consider statins for millions more people in England, NHS told](#)

[Ambulance strikes: Unite workers announce 10 new days of walkouts](#)

[Dentist: Powys patient's 100-mile round trip for appointment](#)

[Junior doctor blamed Birmingham hospital for her suicide, family say](#)

[Dentists warn of permanent damage from clear braces ordered online](#)

[Covid: Half a million people missed out on heart drugs](#)

[Beth Matthews' raw honesty saved lives, say mental health experts](#)

[Actress Vicky McClure hands dementia letter to Downing Street](#)

[Wales ambulance strike: Fresh day of action as Unite walk out](#)

[Illegal vapes are biggest threat on High Street, say Trading Standards](#)

[Hundreds of jobs to go at Leamington Covid 'mega lab'](#)

[Strikes update: How nurses' strikes on Thursday will affect you](#)

['No explanation why my healthy child died'](#)

[East Kent hospitals: Maternity concerns at baby death NHS trust](#)

[Kaylea Titford: Dad's neglect led to obese daughter's death - court](#)

BBC News Contd.

[Keep cake away from office, suggests food watchdog head](#)

[Sudden unexplained death in childhood debated in Parliament](#)

[Investigation into Wolverhampton NHS staff sleeping in patient's bed](#)

[Patients told to expect widespread disruption as nurses strike](#)

[Dementia: Brain check-up tool aims to cut risk at any age](#)

Useful Health Links

[NHS Website: A-Z of health conditions](#)

[Care Quality Commission](#)

[NHS Website](#)

[NICE](#)

[Check NHS standards near you](#)

[NHS Scotland](#)

[Cancer Help UK](#)

[Health in Wales](#)

[British Heart Foundation](#)

[NI Direct](#)

[Health and Care Professions Council](#)

[Clinical trials information](#)

[Mental Health Foundation](#)

[Diabetes UK](#)

[General Medical Council](#)

[British Lung Foundation](#)

[Nursing and Midwifery Council](#)

[National Obesity Forum](#)

Critical Thinking

Do you believe everything you read? Is there truth behind the headlines? Why does false information spread so fast on social media? What can you do to make sure you don't get taken in? Start by looking up the stories on websites such as the ones below:

Full fact <https://fullfact.org/>

Ferret Fact Service <https://theferret.scot/ferret-fact-service/>

BBC Reality Check https://www.bbc.co.uk/news/reality_check

Misinformation

Do you keep a look out for misinformation circulating online? Do you know the impact it could have on patients? How do you counter it?

[Monkeypox Content on TikTok: Cross-sectional Analysis](#)

[Australia's media regulator to get new powers to crack down online misinformation](#)

Bulletins

(click to open)

[Bulletin for clinical commissioning groups \(CCGs\)](#)

[Primary Care Bulletin](#)

[Chief Nursing Bulletin](#)

[Specialised Commissioning Stakeholder Bulletin](#)

[Chief Scientific Officer Bulletin](#)

[Revalidation Matters](#)

[Compassion in Practice strategy and 6Cs Live!](#)

[Liaison and Diversion Bulletin](#)

[Liaison and Diversion Bulletin](#)

[Specialised Commissioning Stakeholder Bulletin](#)

[Pharmacy and Medicines Bulletin](#)



PUBLIC HEALTH

Health e-News Bulletin/NLH Public Health Newsletter

Adult Protection & Safeguarding Domestic Violence

[Narrative and fixed-field Data: Are we underestimating the risk of family and domestic violence?](#)

[Examining the Impact of Jail Sanctions on Recidivism for Domestic Violence Probationers](#)

Addiction

[Detergent-induced eosinophilic inflammation in the esophagus: A key evidence for the Epithelial Barrier Theory](#)

[The Associations Between Loneliness, Hopelessness, and Self-control and Internet Gaming Disorder Among University Students Who Were Men Who Have Sex With Men: Cross-sectional Mediation Study](#)



Allergies

[IL-13, periostin and dipeptidyl-peptidase-4 reveal endotype-phenotype associations in atopic dermatitis](#)

[Respiratory virome profiles reflect antiviral immune responses](#)



Cardiovascular Disease

[When Heart Beats Differently in Depression: Review of Nonlinear Heart Rate Variability Measures](#)

[Venous Thromboembolism Prophylaxis After Fractures](#)

[Cardiac splicing as a diagnostic and therapeutic target](#)

[Nuclear remodelling contributes to cardiac dysfunction during ageing](#)

[Does a Healthful Eating Pattern Extend Life?](#)



Complementary Medicine/Alternative Medicine

[Discovery of anti-cancer chemistry makes skullcap fit for modern medicine](#)

Critical Care

[Sevoflurane with intravenous sedation in critically ill patients](#)

[Extracorporeal membrane oxygenation for COVID-19](#)

[Early management of isolated severe traumatic brain injury in hospitals without neurosurgical capabilities](#)

[Human factors in anaesthesia](#)

Dental



[Efficacy of antibacterial agents combined with erbium laser and photodynamic therapy in reducing titanium biofilm vitality: an in vitro study](#)

[Salivary microbiome and metabolome analysis of severe early childhood caries](#)

[Three dimensional quantitative study of soft tissue changes in nasolabial folds after orthodontic treatment in female adults](#)

Dementia

[High cholesterol levels change the association of biomarkers of neurodegenerative diseases with dementia risk: Findings from a population-based cohort](#)

[Association of plasma biomarkers, p-tau181, glial fibrillary acidic protein, and neurofilament light, with intermediate and long-term clinical Alzheimer's disease risk: Results from a prospective cohort followed over 17 years](#)

[Midlife lipid and glucose levels are associated with Alzheimer's disease](#)

Diabetes

[Changes in fasting blood glucose status and incidence of cardiovascular disease: The China-PAR project](#)

[Nailfold capillaroscopy and deep learning in diabetes](#)

[Technology-Enabled Collaborative Care for Concurrent Diabetes and Distress Management During the COVID-19 Pandemic: Protocol for a Mixed Methods Feasibility Study](#)

[Improving Self-management of Type 2 Diabetes in Latinx Patients: Protocol for a Sequential Multiple Assignment Randomized Trial Involving Community Health Workers, Registered Nurses, and Family Members](#)

[Effects of mobile health interventions on health-related outcomes in older adults with type 2 diabetes: A systematic review and meta-analysis](#)



Diet, Nutrition and Obesity

[Body Dissatisfaction Can Lead to Eating Disorders at Any Age](#)

[Reducing total calories may be more effective for weight loss than intermittent fasting](#)



Digital Health Technology

[A Universal Mental Health–Promoting Mobile App for Adolescents: Protocol for a Cluster Randomized Controlled Trial](#)

[Measurement of Vital Signs by Lifelight Software in Comparison to Standard of Care Multisite Development \(VISION-MD\): Protocol for an Observational Study](#)

[The Effect of the COVID-19 Pandemic on Digital Health–Seeking Behavior: Big Data Interrupted Time-Series Analysis of Google Trends](#)

[An Accurate Deep Learning–Based System for Automatic Pill Identification: Model Development and Validation](#)

[Efficacy of Virtual Care for Depressive Disorders: Systematic Review and Meta-analysis](#)



End of Life Care

[Feasibility, use and benefits of patient-reported outcome measures in palliative care units: a multicentre observational study](#)

[Predictors for the Clinical Efficacy of Tramadol for Cancer Pain](#)

Immunisation and Infection



[Increased choices of pneumococcal vaccines for policy makers](#)

[Measuring the global response to antimicrobial resistance, 2020–21: a systematic governance analysis of 114 countries](#)

[Immunogenicity and safety in healthy adults of full dose versus half doses of COVID-19 vaccine \(ChAdOx1-S or BNT162b2\) or full-dose CoronaVac administered as a booster dose after priming with CoronaVac: a randomised, observer-masked, controlled trial in Indonesia](#)

Inequality

[Racial Disparities in Patient-Provider Communication During Telehealth Visits Versus Face-to-face Visits Among Asian and Native Hawaiian and Other Pacific Islander Patients With Cancer: Cross-sectional Analysis](#)

Learning Disability

[The link between mental health and ADHD is strong -- so why aren't we paying attention?](#)

[Workplace learning and development of people with limited work capacity](#)

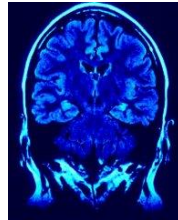
Mental Health



[Trends in antipsychotic prescribing to children and adolescents in England: cohort study using 2000–19 primary care data](#)

[Trends in antipsychotic prescribing in children and adolescents: more is not necessarily better](#)

[Training Staff Across the Veterans Affairs Health Care System to Use Mobile Mental Health Apps: A National Quality Improvement Project](#)



Neurology

[Digital Health Technology to Support Health Care Professionals and Family Caregivers Caring for Patients With Cognitive Impairment: Scoping Review](#)

[Towards functional improvement of motor disorders associated with cerebral palsy](#)

Obstetrics

[Early tastings shorten breastfeeding](#)

[A five-year comparative study of efficacy and acceptability of three different sizes of TCu380Ag and TCu380A intrauterine devices](#)

[Preliminary results of COVID-19 vaccination among Taiwanese pregnant women - a single-center, prospective, case-control study](#)

[Factors Associated With COVID-19 Vaccination Likelihood During Pregnancy](#)



Oncology

[Hemicolectomy versus appendectomy for patients with appendiceal neuroendocrine tumours 1–2 cm in size: a retrospective, Europe-wide, pooled cohort study](#)

[Carfilzomib, lenalidomide, and dexamethasone maintenance for multiple myeloma: when and for whom?](#)

[New partnership to boost UK cancer vaccine research](#)

[Identification and Potential Use of Clusters of Patients With Colorectal Cancer and Patients With Prostate Cancer in Clinical Practice: Explorative Mixed Methods Study](#)

[Using Wearable Inertial Sensors to Assess Mobility of Patients With Hematologic Cancer and Associations With Chemotherapy-Related Symptoms Before Autologous Hematopoietic Stem Cell Transplant: Cross-sectional Study](#)

Ophthalmology

[Private equity changes workforce stability in physician-owned medical practices](#)

[Study: Exudative AMD characteristics unresponsive to loading doses of anti-VEGF therapy](#)

[Researchers find link between articles published before ophthalmology residency, future career path](#)



Paediatrics

[Risk factors for imaging abnormalities after the first febrile urinary tract infection in infants \$\leq 3\$ months old: a retrospective cohort study](#)

[Time to change the reference ranges of children's physiological observations in emergency care? A prospective study](#)

[Parents' COVID-19 vaccine intentions for children under 5 years: Brief reflections from a qualitative study](#)

Pain Medicine

[A Stepped Health Services Intervention to Improve Care for Mental and Neurological Diseases: Protocol for a Prospective Cohort Trial](#)

Patient Experience

[How TikTok Is Being Used to Help Individuals Cope With Breast Cancer: Cross-sectional Content Analysis](#)



Pharmacology

[Lenvatinib with pembrolizumab for untreated advanced renal cell carcinoma - guidance \(TA858\)](#)

[Use of oxygen cylinders where patients do not have access to medical gas pipeline systems](#)

[Examining Drug-Resistant Tuberculosis Stigma Among Health Care Workers Toward the Development of a Stigma-Reduction Intervention: Protocol for a Scoping Review](#)

[Antibiotic use as a risk factor for inflammatory bowel disease across the ages: a population-based cohort study](#)



Seniors and Aging

[Interventions for Patients' Subjective Concerns About Memory and Cognition?](#)

[Tramadol for Hip or Knee Osteoarthritis?](#)

[Older adults benefit when health care providers and affordable housing sites partner, finds research](#)

[Expert outlines hormone and nonhormonal therapies for menopause symptoms](#)



Sexual Health

[Characterizing physician concerns with publicly supporting abortion at Wisconsin's largest medical school](#)

[Measuring Sexual Intelligence for Evaluating Sexual Health](#)

Sleep Medicine

[The impact of experimentally shortened sleep on timing of eating occasions in adolescents: A brief report](#)

[The influence of sexual activity on sleep: A diary study](#)



Sports Medicine/Fitness

[Orthopedic Humanitarian Initiatives \(Ortho HI\), Inc: facilitating movement by connecting cultures](#)

[Association of in-competition injury risk and the degree of rapid weight cutting prior to competition in division I collegiate wrestlers](#)

[Infographic. Workload in throwing dominant sports: an infographic summary](#)

[Identifying latent classes of Relative Energy Deficiency in Sport \(RED-S\) consequences in a sample of collegiate female cross country runners](#)

Surgery

[Temporary ventricular assist device support with a catheter-based axial pump: Changing the paradigm at a pediatric heart center](#)

[Pregnancy heart team: A lesion-specific approach](#)

[Pacemaker implantation associated with tricuspid repair in the setting of mitral valve surgery: Insights from a Cardiothoracic Surgical Trials Network randomized trial](#)

Vaping/Smoking



[Use of Swedish smokeless tobacco during pregnancy: A systematic review of pregnancy and early life health risk](#)

[Early-onset smoking and vaping of cannabis: Prevalence, correlates and trends in New Zealand 14–15-year-olds](#)



Women's Health

[Physical and Mental Effects of Foot Baths Among Women in Labor: Protocol for a Pre-Post Test Experimental Design](#)

[HRT could ward off Alzheimer's among at-risk women](#)

World Health Organisation

[Small Island Developing States accelerate action to tackle biggest killers](#)

[WHO announces plans to establish a TB Vaccine Accelerator council](#)

[Urgent action needed as acute malnutrition threatens the lives of millions of vulnerable children](#)

[WHO updates COVID-19 guidelines on masks, treatments and patient care](#)

[WHO welcomes data on COVID-19 in China, meeting with Minister](#)

Wound Management

[Hydrogel combined with antimicrobial protease dressing accompanied with emotional support to treat wounds of patients taking immunosuppressive agents: A longitudinal study](#)

[Curcumin-loaded alginate hydrogels for cancer therapy and wound healing applications: A review](#)

[Development and validation of a risk prediction model for the recurrence of foot ulcer with type 2 diabetes in China: A longitudinal cohort study based on a systematic review and meta-analysis](#)

[Five-year Follow-up Outcome of Total Omental Lymph Node Flap Transfer in Primary Lymphedema Patient](#)

SOCIAL AND COMMUNITY CARE

[The Use of Technology to Provide Mental Health Services to Youth Experiencing Homelessness: Scoping Review](#)

[Risk of 'poor or potentially illegal' practice in care home discharge plan, warns ADASS](#)

[Practising social work as part of a public inquiry](#)

[The Use of Technology to Provide Mental Health Services to Youth Experiencing Homelessness: Scoping Review](#)

['Why I quit my placement after three weeks'](#)

[Reinstate hospital social workers to improve discharge outcomes, PSWs urge Barclay](#)

[Scrap most community treatment orders, MPs and peers urge government](#)

[Combine social work with scientific methods to boost reliability of age checks, experts advise government](#)

[Festival of Learning is back with a week of high-quality social care training](#)

[The draft Mental Health Bill: parliamentary proposals for change](#)

[Feel Lost in the Changing Landscape of Technology Skills for Social Workers? Let's Map Them Out Together!](#)

[Some Court of Protection report orders 'overly burdensome', warn mental health leaders](#)

Key Resources

[Social Care TV](#)

[e-Learning](#)

[Social Care Online](#)

[Research Register for Social Care](#)

[Social Care Research Ethics Committee](#)

[All SCIE resources](#)

HEALTH MANAGEMENT

[Genetic Analysis of Blood Type May Increase Number of Kidney Transplant Matches](#)

[A view from the front line: the Emergency Department is in need of critical care](#)

[Teledermatology set to provide relief for overstretched services in England](#)

[Study Suggests Vitamin D Benefits and Metabolism May Depend on Body Weight](#)

QUALITY IMPROVEMENT AGENDA

[You can lead clinicians to water, but you cant make them drink: the role of tailoring in clinical performance feedback to improve care quality](#)

[Communication about sexual orientation and gender between clinicians, LGBT+ people facing serious illness and their significant others: a qualitative interview study of experiences, preferences and recommendations](#)

[Retrospective evaluation of an intervention based on training sessions to increase the use of control charts in hospitals](#)

[National improvements in resident physician-reported patient safety after limiting first-year resident physicians extended duration work shifts: a pooled analysis of prospective cohort studies](#)

[Evaluation of the NHS England evidence-based interventions programme: a difference-in-difference analysis](#)

[Monitoring patients sexual orientation and gender identity: Can we ask? Should we ask? How do we ask?](#)

['Show me the data! Using time series to display performance data for hospital boards](#)

[Top-down and bottom-up approaches to low-value care](#)

[Impact of medical education on patient safety: finding the signal through the noise](#)

BMJ Evidence Updates

[Multidimensional evaluation of the pain profile as prognostic factor in individuals with hip or knee osteoarthritis receiving total joint replacement: protocol of a 2-year longitudinal prognostic cohort study](#)

[Longitudinal patient-reported outcomes 1 year after thoracoscopic segmentectomy versus lobectomy for early-stage lung cancer: a multicentre, prospective cohort study protocol](#)

[Age, gender and socioeconomic patterns of awareness and usage of e-cigarettes across selected WHO region countries: evidence from the Global Adult Tobacco Survey](#)

[Risk and timing of venous thromboembolism in patients with gastrointestinal cancer: a nationwide Danish cohort study](#)

[Associations between alcohol brief intervention in primary care and drinking and health outcomes in adults with hypertension and type 2 diabetes: a population-based observational study](#)

[Machine learning approach to predict postpartum haemorrhage: a systematic review protocol](#)

[Xanthogranulomatous endometritis with unilateral salpingo-oophoritis in a postmenopausal woman masquerading as a malignancy](#)

[Neonatal herpes simplex presenting as a zosteriform eruption](#)

[Blind loop mucocele of a side-to-end colorectal anastomosis as a rare cause of large bowel obstruction](#)

[Auricular manifestation of Mpox \(monkeypox\)](#)

[Proportion attributable to contextual effects in general medicine: a meta-epidemiological study based on Cochrane reviews](#)

[Perspectives on the production, and use, of rapid evidence in decision making during the COVID-19 pandemic: a qualitative study](#)



Cochrane

[Positioning for lumbar puncture in newborn infants](#)

[What are the benefits and risks of neoadjuvant treatment \(drug treatment prior to surgery to remove a tumour\) for melanoma, a type of skin cancer?](#)

[Steroid implants for chronic uveitis not caused by infection](#)

[How effective and safe are systemic opioids for postoperative pain control and management in neonates?](#)

[Does reducing your salt intake help to prevent and treat chronic kidney disease in people with diabetes?](#)

[Do short periods of artificially blocking blood flow to the limbs in people undergoing vascular surgery reduce death and organ injury?](#)

[Different treatments for an esotropia \(eye turns inward\) that occurs within the first six months of life](#)

[Telerehabilitation for people with low vision](#)

[Medicines to increase foetal haemoglobin levels and reduce the need for blood transfusion in people with non-transfusion-dependent thalassaemia](#)

[Truenat MTB assays for pulmonary tuberculosis and rifampicin resistance in adults](#)

[Baclofen for alcohol use disorder](#)

NICE Clinical Knowledge Summaries provides primary care practitioners with a readily accessible summary of the current evidence base and practical guidance on best practice in respect of over 300 common and/or significant primary care presentations.

The service is being regularly maintained and upgraded as and when significant new evidence emerges and up to 10 new topics will be added each year. You can access the service [here](#).

National Institute for Health Research (NIHR) Health Technology Assessment

[Guidelines for virtual home assessment tools](#)

[Smart stethoscope uses artificial intelligence to screen for heart failure](#)

[Safety-netting in general practice: how to manage uncertain diagnoses](#)

DoH Press Releases/New Publications

[Statutory guidance: Care Act 2014: supporting implementation](#)

[Guidance: Market Sustainability and Fair Cost of Care Fund 2022 to 2023: guidance](#)

[Impact assessment: Health and Care Act 2022: combined impact assessments](#)

[Guidance: DHSC non-executive appointments](#)

[Press release: New diagnostic centre in Stockton-on-Tees to deliver hundreds of thousands of checks, scans and tests a year for local residents](#)

[Press release: New diagnostic centre in Stockton-on-Tees to deliver hundreds of thousands of checks, scans and tests a year](#)

[Consultation outcome: Operational guidance to implement a lifetime cap on care costs](#)

[Guidance: Adult social care charging reform: early assessment and trailblazer support funding grant determination 2022 to 2023](#)

[Guidance: DHSC group accounting manual 2022 to 2023](#)

LIBRARY "BITS AND PIECES"

Published recently? Completed a research project?

Tell us about it! Fill out our publication or research repository form by clicking [here](#) and we'll display your work on our website

[Publication repository](#)

[Research repository](#)

The above current awareness bulletin has been produced by Keyll Darree Library and Information Service. We aim to produce the bulletin every week. If you need any help locating or accessing any of the items included in this issue, please contact the library staff on 642993/642974.

As usual, we welcome any feedback, so please let us know if you have any comments about format, content, length, arrangement or indeed, any other observations. If you know of anyone else who might like to receive the bulletin, or you would like your name removed from the distribution list, again, please let us know.

Check out our library website at www.librarykeylldarree.gov.im for details of all our services, facilities and any forthcoming events.