

## **IN THE KNOW: Keeping Staff Informed**

**Volume 17 (24) July 2022**

Check out our library [website](#) and our [Twitter](#) for details of all our services, facilities and any forthcoming events.

**Do you have feedback about the library staff or spaces?**

Share it here: <https://www.surveymonkey.com/r/KDFeedback>

**In this issue:**

**IN THE SPOTLIGHT**

**MANX SKEET**

**STAFF HEALTH & WELLBEING**

**HOT OFF THE PRESS**

**PUBLIC HEALTH**

**EVIDENCE BASED PRACTICE**

**SOCIAL AND COMMUNITY CARE**

**HEALTH MANAGEMENT**

**PATIENT INFORMATION**

**LIBRARY BITS AND PIECES**

## **IN THE SPOTLIGHT**

[Airborne SARS-CoV-2](#)

[Covid: Terms of inquiry into UK pandemic response finalised](#)

## **STAFF HEALTH & WELLBEING**

[Designing Hospitals that Promote Staff Wellbeing](#)

[What leaders must do now to promote employee wellbeing](#)

[Simple lunchtime exercises to boost brain power, according to a Pilates instructor](#)

[Night Shift Work & Metabolic Syndrome in Healthcare Workers](#)

### **Useful links**

[\*\*Patient.co.uk\*\*](#)

[\*\*NHS Website\*\*](#)

[\*\*Mental Health Foundation\*\*](#)

[\*\*World Health Organisation\*\*](#)



## MANX SKEET

[Covid-19: 'R' number falls sharply](#)

[Efforts made to ease chronic queues for Ramsey pharmacies](#)

[Revised dates for RCN ballot over Manx Care pay](#)

[Fewer than 1 in 10 bus stops adapted for passengers with mobility issues](#)

[Interim Director of Public Health appointed](#)

[Bus network 'must not exclude passengers with additional needs'](#)

[Waiting times go up in two thirds of Manx Care's specialties](#)

[Hospital still operating with fewer anaesthetists than it should have](#)

[LFT's free of charge 'until further notice'](#)

[Minister doesn't know if public health director will be Island based](#)

[A fifth of roles at Manx Care currently vacant](#)

## HOT OFF THE PRESS

### BBC News

['I never thought it would be something that I would get'](#)

[NI waiting lists: Overnight elective surgery centres established](#)

[Pride: Stay at home if you have monkeypox symptoms](#)

[Breast cancer: 'I knew my body wasn't right'](#)

[Invisible disabilities: How an autism diagnosis changed my life](#)

[Quarter of GP posts vacant within a decade in England, study warns](#)

[Archie Battersbee parents win appeal to reconsider case](#)

[Bowel cancer: How to check your poo](#)

[Deborah James: Her passionate vision for the £6.8m she raised](#)

[NHS App given new features for digital revolution](#)

[Male MPs wear 'hot flush' vests to simulate menopause](#)

[Invisible disability: Living with inflammatory bowel disease](#)

[Dame Deborah James saved countless lives raising awareness - Bowl  
Cancer UK CEO](#)

[Dame Deborah James: Cancer campaigner dies aged 40](#)

[Southend hospital nurses quitting due to 'toxic' conditions](#)

[Peanut allergy sufferer George, 10, tries new drug](#)

[Covid-booster response hope for most vulnerable](#)

[El Salvador's abortion ban: 'I was sent to prison for suffering a  
miscarriage'](#)

[The abortion clues that can hide on your phone](#)

[What's it like living with an invisible disability?](#)

[Doctors warn of industrial action amid pay squeeze](#)

[Sir John Major calls contaminated blood scandal 'incredibly bad luck'](#)

[Adele Roberts: Radio 1 DJ reveals she's free from bowel cancer](#)

[Abortion care summit brings clinic buffer zones closer](#)

[NHS patients to be offered chance to travel for surgery](#)

[Roe v Wade: US firms pledge to pay staff travel expenses for  
abortions](#)

[Roe v Wade: The world reacts to US abortion ruling](#)

[Polio: Virus found in London prompts misleading vaccine claims](#)

[Zika and dengue may make humans more attractive to mosquitoes](#)

[Help 999 teams find missing heart defibrillators](#)

## Useful Health Links

[NHS Website: A-Z of health conditions](#)

[NHS Website](#)

[Check NHS standards near you](#)

[Cancer Help UK](#)

[British Heart Foundation](#)

[Health and Care Professions Council](#)

[Mental Health Foundation](#)

[General Medical Council](#)

[Nursing and Midwifery Council](#)

[Care Quality Commission](#)

[NICE](#)

[NHS Scotland](#)

[Health in Wales](#)

[NI Direct](#)

[Clinical trials information](#)

[Diabetes UK](#)

[British Lung Foundation](#)

[National Obesity Forum](#)

## Critical Thinking

Do you believe everything you read? Is there truth behind the headlines? Why does false information spread so fast on social media? What can you do to make sure you don't get taken in? Start by looking up the stories on websites such as the ones below:

Full fact <https://fullfact.org/>

Ferret Fact Service <https://theferret.scot/ferret-fact-service/>

BBC Reality Check [https://www.bbc.co.uk/news/reality\\_check](https://www.bbc.co.uk/news/reality_check)

## Misinformation

Do you keep a look out for misinformation circulating online? Do you know the impact it could have on patients? How do you counter it?

[Telling the Truth](#)

[COVID-19 and nutrition: summary of official recommendations](#)

## Bulletins

**(click to open)**

[Bulletin for clinical commissioning groups \(CCGs\)](#)

[Chief Nursing Bulletin](#)

[Chief Scientific Officer Bulletin](#)

[Compassion in Practice strategy and 6Cs Live!](#)

[Liaison and Diversion Bulletin](#)

[Pharmacy and Medicines Bulletin](#)

[Primary Care Bulletin](#)

[Specialised Commissioning Stakeholder Bulletin](#)

[Revalidation Matters](#)

[Liaison and Diversion Bulletin](#)

[Specialised Commissioning Stakeholder Bulletin](#)



## **PUBLIC HEALTH**

### **Health e-News Bulletin/NLH Public Health Newsletter**

#### **Adult Protection & Safeguarding Domestic Violence**

[Sharing information about domestic violence and abuse in healthcare: an analysis of English guidance and recommendations for good practice](#)

[How memes about the Depp-Heard trial can have real-life consequences](#)

#### **Addiction**

[Behavioral economics indices predict alcohol use and consequences in young men at 4-year follow-up](#)

[Familial associations in Adolescent Substance Use Disorder: A Population-based Cohort Study](#)



#### **Allergies**

[Prenatal antibiotic exposure, asthma, and the atopic march: A systematic review and meta-analysis](#)

[Cell-type eQTL deconvolution of bronchial epithelium through integration of single-cell and bulk RNA-seq](#)

## **Cardiovascular Disease**



[Renal function and mortality in patients with atrial fibrillation](#)

[Incidence of acute myocarditis and pericarditis during the coronavirus disease 2019 pandemic: comparison with the prepandemic period](#)

[Predictors of early discharge after transcatheter aortic valve implantation: insight from the CoreValve ClinicalService](#)

## **Critical Care**

[Omission of Dietitian as Integral Member of Critical Care Team](#)

[Eye-movement tracking glasses are used to evaluate mental stress in first naturalistic study of critical care nurses](#)

## **Dental**



[Randomised placebo-controlled multicentre trial to evaluate the efficacy and safety of JTR-161, allogeneic human dental pulp stem cells, in patients with Acute Ischaemic stRoke \(J-REPAIR\)](#)

[Wearing dentures may affect a person's nutrition](#)



## **Dementia**

[More Evidence the Flu Vaccine May Guard Against Alzheimer's](#)

[Wearing dentures may affect a person's nutrition](#)

## **Diabetes**

[Lipid variability and risk of microvascular complications in Action to Control Cardiovascular Risk in Diabetes \(ACCORD\) trial: A post hoc analysis](#)

[Time-limited diets and the gut microbiota in cardiometabolic disease](#)



## **Diet, Nutrition and Obesity**

[Sleep added to cardiovascular health checklist](#)

[No more binge eating: Signal pathway in the brain that controls food intake discovered](#)

[Higher protein intake while dieting leads to healthier eating](#)



## Digital Health Technology

[A Remote Digital Monitoring Platform to Assess Cognitive and Motor Symptoms in Huntington Disease: Cross-sectional Validation Study](#)

[Digital Therapeutic Device for Urinary Incontinence: A Randomized Controlled Trial](#)



## End of Life Care

[Content of Serious Illness Care conversation documentation is associated with goals of care orders—a quantitative evaluation in hospital](#)

[Characteristics and factors associated with mortality in palliative patients visiting the Emergency Department of a large tertiary hospital in Thailand](#)

[Family caregivers' concerns about advance care planning for home-dwelling people with dementia: a cross-sectional observational study in Japan](#)



## Immunisation and Infection

[Immunogenicity, otitis media, hearing impairment, and nasopharyngeal carriage 6-months after 13-valent or ten-valent booster pneumococcal conjugate vaccines, stratified by mixed priming schedules: PREVIX COMBO and PREVIX BOOST randomised controlled trials](#)

[Vaccination with fractional doses: promise or illusion?](#)

## **Learning Disability**

[When it comes to ADHD and ASD, the eyes could reveal all](#)

[The identification and classification of struggling readers based on the simple view of reading](#)



### **Men's Health**

[Novel therapeutic agents may reduce the oncogenesis of metastatic prostate cancer](#)

[Hormones contribute to sex disparities in bladder cancer, study shows](#)

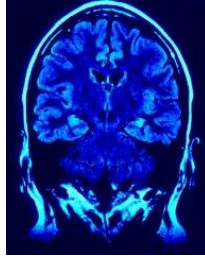
### **Mental Health**



[Study reveals the job problems contributing to physician suicide](#)

[Best Strategy to Prevent Schizophrenia Relapse Identified?](#)

[How to improve oral health in people with severe mental illness #MindYourSmile](#)



## **Neurology**

[Potential disease-modifying therapies for Huntington's disease: lessons learned and future opportunities](#)

[A biological classification of Huntington's disease: the Integrated Staging System](#)

## **Obstetrics**

[Continuous versus disrupted subcutaneous tissue closure in cesarean section: A retrospective cohort study](#)

[Impact of a Single-Session Psychosocial Counseling Intervention for Women with Vulvodynia](#)

[A Trauma-Informed and Gender-Inclusive Medical Nomenclature](#)



## **Oncology**

[Research Trends in Immune Checkpoint Blockade for Melanoma: Visualization and Bibliometric Analysis](#)

[Structural variations in cancer and the 3D genome](#)

[Z-nucleic acids give immunotherapy a boost](#)

## **Ophthalmology**

[Assessing the Risk Factors For Diagnosed Symptomatic Dry Eye Using a Smartphone App: Cross-sectional Study](#)

[Eyes a haven for Ebola and other viruses](#)

[How quality vision builds a foundation for safety and everyday activities](#)

## **Orthopaedics**

[Arthroscopic reconstruction of anterior cruciate ligaments with allograft: single-tunnel single-bundle versus single-tunnel double-bundle techniques](#)

[Subtrochanteric femoral fractures and intramedullary nailing complications: a comparison of two implants](#)



## **Paediatrics**

[Physician decision-making process about withholding/withdrawing life-sustaining treatments in paediatric patients: a systematic review of qualitative evidence](#)

[Mental health of children with and without special healthcare needs and of their caregivers during COVID-19: a cross-sectional study](#)

## **Pain Medicine**

[Night shift work reduces doctors' empathy for pain: study](#)

## **Patient Experience**

[I Have Monkeypox — Here's What It's Like And What You Should Know](#)

[Why Empathy Is More Helpful Than Sympathy for My Patients](#)



## **Pharmacology**

[New presentation: Wegovy \(semaglutide\) FlexTouch solution for injection in pre-filled pen](#)

[User centered clinical decision support to implement initiation of buprenorphine for opioid use disorder in the emergency department: EMBED pragmatic cluster randomized controlled trial](#)

## **Primary Care**

[Staff. A Doctor's Heartache, Headache or Passion.](#)

[JAMA Pediatrics: Association of Food Marketing With Eating Behaviors of Children, Adolescents](#)



## **Seniors and Aging**

[Conflicting Aims and Values in the Application of Smart Sensors in Geriatric Rehabilitation: Ethical Analysis](#)

[Frugal Purchasing of Generic Medications](#)

[Bone quality diagnostic tool could provide better insights into bone hardness](#)



## **Sexual Health**

[Women achieving childbearing desires drives contraception use](#)

[Correlates of Engagement Within an Online HIV Prevention Intervention for Single Young Men Who Have Sex With Men: Randomized Controlled Trial](#)

[Enablers and Barriers to HIV Services for Gay and Bisexual Men in the COVID-19 Era: Fusing Data Sets from Two Global Online Surveys Via File Concatenation With Adjusted Weights](#)

[Effect of Switching Antiretroviral Treatment Regimen in Patients With Drug-Resistant HIV-1 Infection: Retrospective Observational Cohort Study](#)

## **Sleep Medicine**

[Optimising sounds for the driving of sleep oscillations by closed-loop auditory stimulation](#)

[Can exercise training promote better sleep and reduced fatigue in people with chronic stroke? A systematic review](#)

[“The terrible dryness woke me up, I had some trouble breathing”—Critical situations related to oral health as described by CPAP-treated persons with obstructive sleep apnea](#)



## **Sports Medicine/Fitness**

[Effectiveness of the Activate injury prevention exercise programme to prevent injury in schoolboy rugby union](#)

[The Society of Sports Therapists: reciprocating kindness during the pandemic](#)

[Association between SARS-COV-2 infection and muscle strain injury occurrence in elite male football players: a prospective study of 29 weeks including three teams from the Belgian professional football league](#)

## **Surgery**

[Technique and timing may influence sensitivity of lung ultrasound for pneumothorax in trauma patients](#)

[Value in acute care surgery, part 2: Defining and measuring quality outcomes](#)

[The surgical management of complicated peptic ulcer disease: An EAST video presentation](#)





## **Vaping/Smoking**

[Effectiveness of a Conversational Chatbot \(Dejal@bot\) for the Adult Population to Quit Smoking: Pragmatic, Multicenter, Controlled, Randomized Clinical Trial in Primary Care](#)

[Effectiveness of Recruitment Strategies of Latino Smokers: Secondary Analysis of a Mobile Health Smoking Cessation Randomized Clinical Trial](#)

[E-cigarette use and conventional cigarette smoking among European students: findings from the 2019 ESPAD survey](#)



## **Women's Health**

['Structural racism' cited in study of breast-biopsy delays](#)

[The effect of breast cancer screening is declining](#)

## **World Health Organisation**

[New political declaration to halve road traffic deaths and injuries by 2030 is a milestone achievement](#)

[World Bank Board Approves New Fund for Pandemic Prevention, Preparedness and Response \(PPR\)](#)

[WHO intensifies response to looming health crisis in the greater Horn of Africa as food insecurity worsens](#)

[World Health Summit 2022: Registration now opened and key speakers announced](#)

[Meeting of the International Health Regulations \(2005\) Emergency Committee regarding the multi-country monkeypox outbreak](#)

[Commonwealth leaders recommit to ending malaria and neglected tropical diseases](#)

[SunSmart Global UV App helps protect you from the dangers of the sun and promotes public health](#)

[Colombia's landmark Road Safety Law could save countless lives](#)

[Lack of innovation set to undermine antibiotic performance and health gains](#)

## **Wound Management**

[A Comparative Analysis of Risk Factors for Breast Skin Necrosis Following Autologous versus Device-Based Breast Reconstruction](#)

[Smoking and diabetes related amputations](#)

[What is the impact of patient violence in the Emergency Department on emergency nurses' intention to leave?](#)

[Effect of dead space reduction in pilonidal sinus surgery: introduction of a novel technique](#)

## **SOCIAL AND COMMUNITY CARE**

[Guide to the draft Mental Health Bill](#)

[Most councils fear they will lack enough social workers to implement care reforms, finds survey](#)

[Unions seek 11% wage rise for Cafcass staff after chief's warnings of social worker exodus](#)

[Bill to remove social work from councils in Scotland published](#)

[Most councils fear they will lack enough social workers to implement care reforms, finds survey](#)

[Surviving Ofsted: a team manager's story](#)

[Social Work, Schools, and "Don't Say Gay"](#)

[You Better \(Social\) Work: On Being a Gay Social Worker\\*](#)

[Securing citizens' social rights under neoliberal welfare governance: the case of Israeli social services](#)

### **Key Resources**

[Social Care TV](#)

[e-Learning](#)

[Social Care Online](#)

[Research Register for Social Care](#)

[Social Care Research Ethics Committee](#)

[All SCIE resources](#)

## HEALTH MANAGEMENT

[The growth of virtual wards needs to be driven by outcomes – not targets](#)

[How to improve patient flow through supported discharge](#)

[NHS could get 'much better deals' by building on 'infamous' drugs procurement](#)

[Patient safety is not a 'priority' for NHSE claims watchdog chief](#)

[NHS could get 'much better deals' by building on 'infamous' drugs procurement](#)

[Incidents of racial prejudice should be treated as seriously as drug errors](#)

[Driving cancer screening with data innovations](#)

[NHS England appoints chief workforce officer to lead expanded department](#)

[How can we develop professionally diverse leadership in primary care?](#)

## QUALITY IMPROVEMENT AGENDA

[Optimising GPs communication of advice to facilitate patients self-care and prompt follow-up when the diagnosis is uncertain: a realist review of 'safety-netting in primary care](#)

[Filling a gap in safety metrics: development of a patient-centred framework to identify and categorise patient-reported breakdowns related to the diagnostic process in ambulatory care](#)

**BMJ Evidence Updates**

[Health system costs of a breast cancer early diagnosis programme in a rural district of Rwanda: a retrospective, cross-sectional economic analysis](#)

[Mental health services in response to the COVID-19 pandemic in high-income countries: protocol for a rapid review](#)

[Clinical and cost-effectiveness of Knee Arthroplasty versus Joint Distraction for Osteoarthritis \(KARDS\): protocol for a multicentre, phase III, randomised control trial](#)

[Exploring the key anthropological drivers of and barriers to zoonotic malaria preventative behaviour in a community exposed to Plasmodium knowlesi infection in Malaysia: protocol for a qualitative study with a participatory research design](#)

[Data linkage of German statutory health insurance claims data and care needs assessments preceding a population-based cohort study on nursing home admission](#)

[Vulnerability for alcohol use disorder after adverse childhood experiences \(AUDACE\): protocol for a longitudinal fMRI study assessing neuropsychobiological risk factors for relapse](#)

[Vulnerabilities in child well-being among primary school children: a cross-sectional study in Bradford, UK](#)

[Factors associated with, and variations in, COVID-19 hospital death rates in Englands first two waves: observational study](#)

[Gross and applied anatomy pedagogical approaches in occupational therapy education: protocol for a scoping review](#)

[Risk factors for fear of falling in stroke patients: a systematic review and meta-analysis](#)

[Using nasal sprays to prevent respiratory tract infections: a qualitative study of online consumer reviews and primary care patient interviews](#)

[Protocol for a systematic review on routine use of antibiotics for infants less than 6 months of age with growth failure/faltering](#)

[Mental health and working constraints of first-year PhD students in health and science in a French university: a cross-sectional study in the context of occupational health monitoring](#)

[Evidence base of economic evaluations of workplace-based interventions reducing occupational sitting time: an integrative review](#)



## Cochrane

[Peri-implantation glucocorticoid administration for assisted reproductive technology cycles](#)

[Mobility training for increasing mobility and functioning in older people who are frail](#)

[Certolizumab pegol for the treatment of maintaining inactive Crohn's disease](#)

[Early versus late surgical start times for on-pump cardiac surgery](#)

[Uncut Roux-en-Y reconstruction after distal gastrectomy for gastric cancer](#)

[Purse-string skin closure versus linear skin closure in people undergoing stoma reversal](#)

[Marine-derived fatty acid therapy for stroke](#)

[Spontaneous breathing activity in COVID-19-related lung failure](#)

[What are the benefits and harms of physical activity for people with irritable bowel syndrome](#)

[Neuroprotective effect of sulfonylurea drugs for people with ischemic stroke](#)

[Treating all teeth \(full mouth\) within 24 hours for gum disease \(periodontitis\) in adults](#)

[Colchicine for the primary prevention of cardiovascular events](#)

NICE Clinical Knowledge Summaries provides primary care practitioners with a readily accessible summary of the current evidence base and practical guidance on best practice in respect of over 300 common and/or significant primary care presentations.

The service is being regularly maintained and upgraded as and when significant new evidence emerges and up to 10 new topics will be added each year. You can access the service [here](#).

### **National Institute for Health Research (NIHR) Health Technology Assessment**

[Group exercise sessions improve long-term mobility in older people](#)

[Neonatal care: parents may need long-term psychological support](#)

[Enhanced breast screening improved survival among women at increased risk of cancer](#)

[Negative attitudes to dementia are widespread on Twitter](#)

### **DoH Press Releases/New Publications**

[Guidance: Who can issue fit notes: guidance for healthcare professionals and their employers](#)

[Decision: Coronavirus \(COVID-19\): notification to organisations to share information](#)

[Guidance: Hospital discharge and community support guidance](#)

[Policy paper: The Future of UK Clinical Research Delivery: 2022 to 2025 implementation plan](#)

[Impact assessment: The Gender Recognition \(Disclosure of Information\) \(England\) Order 2022 – equality impact assessment](#)

[Press release: New treatments to tackle pandemic of drug-resistant infections](#)

[Policy paper: DHSC: evaluation strategy](#)

[News story: Patients to benefit following clinical research boost](#)

### **LIBRARY "BITS AND PIECES"**

The above current awareness bulletin has been produced by Keyll Darree Library and Information Service. We aim to produce the bulletin every week. If you need any help locating or accessing any of the items included in this issue, please contact the library staff on 642993/642974.

As usual, we welcome any feedback, so please let us know if you have any comments about format, content, length, arrangement or indeed, any other observations. If you know of anyone else who might like to receive the bulletin, or you would like your name removed from the distribution list, again, please let us know.

Check out our library website at [www.librarykeylldarree.gov.im](http://www.librarykeylldarree.gov.im) for details of all our services, facilities and any forthcoming events.