



# Government Departments

*Working together for the Isle of Man*

## Isle of Man Government

*Reiltys Ellan Vannin*

**July 2022**

*Contact Sheet*

### Boards and Offices

Attorney General's Chambers: 685452

Communications and Utilities Regulatory Authority: 677022

Financial Intelligence Unit: 686000

Financial Services Authority: 689300

Gambling Supervision Commission: 694331

General Registry: 685265

Manx Care: 650000

Manx National Heritage: 648000

Manx Utilities: 687687

Office of Information Commissioner: 693260

Office of Fair Trading: 686530

Post Office: 698400

Public Sector Pensions Authority: 685598

Road Transport Licensing Committee: 651564

Safeguarding Board: 687365

### Cabinet Office

*Oik Coonceil ny Shirveishee*

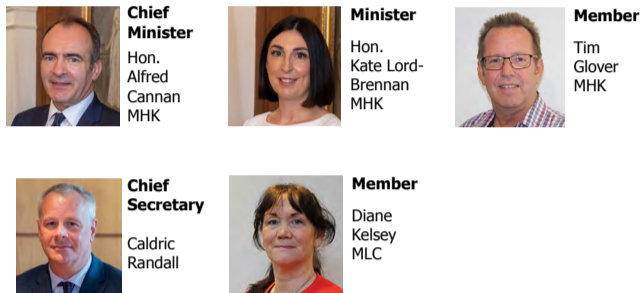
[www.gov.im/co](http://www.gov.im/co)

#### Headquarters

Government Office  
Bucks Road  
Douglas  
IM1 3PN

#### Useful Numbers

General Enquiries: 685711 | Passports: 685208 | Immigration: 685203 | Borders: 686283  
Government Communications: 685138 | Government House: 620147 | Welcome Centre: 686801  
Learning, Education and Development: 685724 | GTS helpdesk: 685556 | Staff Welfare: 687027  
Planning Appeals: 685280 | Office of Human Resources: 685000 | Public Health: 642639



### Education, Sport and Culture

*Ynsee, Spoyrt as Cultoor*

[www.gov.im/desc](http://www.gov.im/desc)

#### Headquarters

Thie Slieau Whallian  
Foxdale Road  
St John's  
IM4 3AS

#### Useful Numbers

General Enquiries: 685808 | Student Grants: 685822 | Sports Development: 688592 | NSC: 688588  
Villa Marina/Gaiety Theatre: 600555 | Arts Council: 694598 | UCM: 648200 | Youth Service: 686057  
Careers Service: 685128 | Professional Development Centre: 693830/6



### Enterprise

*Gastid Dellal*

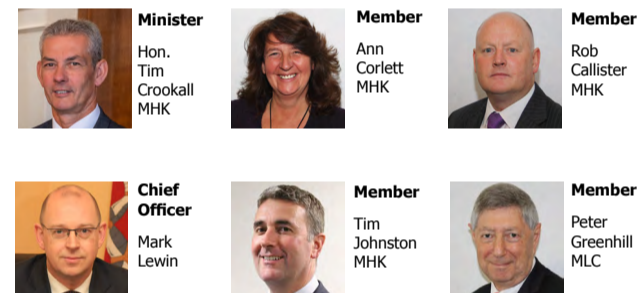
[www.gov.im/dfe](http://www.gov.im/dfe)

#### Headquarters

St George's Court  
Upper Church Street  
Douglas  
IM1 1EX

#### Useful Numbers

General Enquiries & Executive Agencies: 686400 | Financial Services: 686403 | E-Business: 687598  
Motorsport Events: 687087 | Ship Registry: 688500 | Aircraft Registry: 682358  
Enterprise Support: 687333 | Inward Invest/Retail: 678361 | Work Permits: 682393  
Tourist Information: 686766 | Companies Registry: 689389 | Manufacturing: 687175



### Environment, Food and Agriculture

*Chymmyltaght, Bee as Eirinyis*

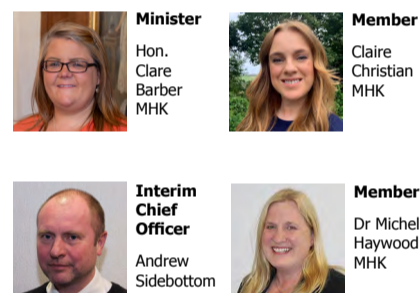
[www.gov.im/defa](http://www.gov.im/defa)

#### Headquarters

Thie Slieau Whallian  
Foxdale Road  
St John's  
IM4 3AS

#### Useful Numbers

General Enquiries: 685835 | Agriculture: 685844 | Fisheries: 685857 | Forestry: 695701  
Environment, Safety and Health: 685894 | Planning: 685950  
Biodiversity: 695737 | Wildlife Park: 897323 | Biosphere: 686080



### Health and Social Care

*Slaynt as Kiarail y Theay*

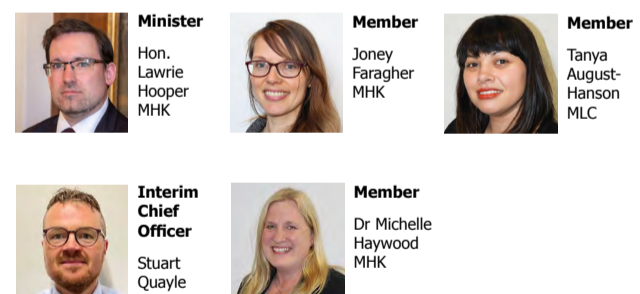
[www.gov.im/dhsc](http://www.gov.im/dhsc)

#### Headquarters

1st Floor Belgravia House  
34-44 Circular Road  
Douglas  
IM1 1AE

#### Useful Numbers

Chief Executive's Office/Corporate Services: 685816



### Home Affairs

*Cooishyn Sthie*

[www.gov.im/dha](http://www.gov.im/dha)

#### Headquarters

Tromode Road  
Douglas  
IM2 5PA

#### Useful Numbers

General Enquiries: 694300 | Police HQ: 631212 | Fire & Rescue HQ: 647300 | Prison Service: 891000  
Probation: 687324 | Emergency Services Joint Control Room: 697327 | Emergency Planning: 694317



### Infrastructure

*Bun-troggalys*

[www.gov.im/doi](http://www.gov.im/doi)

#### Headquarters

Sea Terminal  
Douglas  
IM1 2RF

#### Useful Numbers

Airport: 821600 | Harbours: 686612 | Public Transport: 697400 | Housing: 685955  
Roads (emergencies): 672000 | Customer Services: 850000 | Driving Licences: 698525  
Public Estates Services: 687300 (8.30pm - 4.30pm) | Local Government Unit: 685900  
Licensing: 686843 | Parking Permits: 686687 | Vehicle/Driver Tests: 627431



### The Treasury

*Yn Tashtey*

[www.gov.im/treasury](http://www.gov.im/treasury)

#### Headquarters

Government Office  
Bucks Road  
Douglas  
IM1 3PZ

#### Useful Numbers

General Enquiries: 685980 | Income Tax: 685400 | Rates: 685661 | Manx Lottery Trust: 685745  
Job Centre: 687014 | Customs and Excise: 648100 | Social Security: 685656

