

IN THE KNOW: Keeping Staff Informed

Volume 15 (38) September 2020

Check out our library [website](#), [Facebook](#) or [Twitter](#) for details of all our services, facilities and any forthcoming events.

In this issue:

RECOMMENDED RESOURCES

IN THE SPOTLIGHT

MANX SKEET

STAFF HEALTH & WELLBEING

HOT OFF THE PRESS

PUBLIC HEALTH

EVIDENCE BASED PRACTICE

SOCIAL AND COMMUNITY CARE

HEALTH MANAGEMENT

PATIENT INFORMATION

LIBRARY BITS AND PIECES

RECOMMENDED RESOURCES

Basic Principles of Cardiovascular MRI: Physics and Imaging Techniques by Mushabbar A. Syed (Editor), Subha V. Raman (Editor), Orlando P. Simonetti (Editor)

CT and MR in Cardiology by Abbara MD FACR FSCCT, Suhny

IN THE SPOTLIGHT

[Hospital covid deaths triple since start of September](#)

STAFF HEALTH & WELLBEING

[High-protein vegan foods to eat if you're looking to reduce your meat intake](#)

[How to stay mentally healthy at university – a campus doctor's guide](#)

Useful links

[Patient.co.uk](#)

[NHS Website](#)

[Mental Health Foundation](#)

[World Health Organisation](#)



MANX SKEET

[Swimmer thanks lifeguards and paramedics who saved his life](#)

[Quayle to give update on coronavirus situation](#)

[New Covid case confirmed](#)

[Noble's Hospital ready to deal with new Covid-19 outbreak](#)

[Practices are continuing to struggle to attract GPs](#)

[Quayle to give update on coronavirus situation](#)

HOT OFF THE PRESS

BBC News

(Asterisked items have been critically reviewed in Behind the Headlines. See below.)

[Covid: Boris Johnson warns of tougher measures if new rules are flouted](#)

[Covid: US death toll passes 200,000](#)

[Coronavirus: Whitty and Vallance faced 'herd immunity' backlash, emails show](#)

[Yew Trees hospital: Ten staff suspended at mental health unit](#)

[Blind downhill mountain biker aims to turn professional](#)

[Coronavirus: 'Government must publish contact-tracing app data'](#)

[Covid: Ban on meeting in houses extended across Scotland](#)

[Coronavirus: PM says Covid 'complacency could be our undoing'](#)

[Covid restrictions: PM sets out new hospitality and face covering rules](#)

[Covid: Deaths near lowest level since March](#)

[Covid: Pubs and restaurants in England to have 10pm closing times](#)

[Covid: School bus drivers fearful of coronavirus infection risk](#)

[Flu jab 'more important than ever' this winter](#)

[Covid: Have local lockdowns worked?](#)

[Covid: UK coronavirus alert level moving to 4](#)

[Covid lockdown for Newport, Bridgend, Merthyr Tydfil and Blaenau Gwent](#)

[Coronavirus restrictions are extended across NI](#)

[Coronavirus: Childcare exemption added to new restrictions in England](#)

[Coronavirus: Ashworth on hospital and care home tests](#)

[Dr Patrick Vallance: 'Epidemic is doubling every seven days'](#)

[Covid: UK at 'critical point' in pandemic, top scientists to warn](#)

[Music boosts memories for ethnic minority dementia patients](#)

[Coronavirus: WHO sets rules for testing African herbal remedies](#)

[Covid: PM considering new restrictions amid second coronavirus wave](#)

[NHS Covid-19 app: One million downloads of contact tracer for England and Wales](#)

[NHS Covid-19 app: How to install and use it](#)

[Covid-19: Dad lost weight to attend daughter's birth](#)

[Coronavirus: Test turnaround times getting longer in England](#)

[Hancock: 'Upgrade' may be needed to access NHS Covid app](#)

[Flu jabs limited due to high demand](#)

Useful Health Links

[NHS Website: A-Z of health conditions](#)

[NHS Website](#)

[Check NHS standards near you](#)

[Cancer Help UK](#)

[British Heart Foundation](#)

[Health and Care Professions Council](#)

[Mental Health Foundation](#)

[General Medical Council](#)

[Nursing and Midwifery Council](#)

[Care Quality Commission](#)

[NICE](#)

[NHS Scotland](#)

[Health in Wales](#)

[NI Direct](#)

[Clinical trials information](#)

[Diabetes UK](#)

[British Lung Foundation](#)

[National Obesity Forum](#)

(click to open)

[Bulletin for clinical commissioning groups \(CCGs\)](#)

[Chief Nursing Bulletin](#)

[Chief Scientific Officer Bulletin](#)

[Compassion in Practice strategy and 6Cs Live!](#)

[Liaison and Diversion Bulletin](#)

[Pharmacy and Medicines Bulletin](#)

[Primary Care Bulletin](#)

[Specialised Commissioning Stakeholder Bulletin](#)

[Revalidation Matters](#)

[Liaison and Diversion Bulletin](#)

[Specialised Commissioning Stakeholder Bulletin](#)



PUBLIC HEALTH

Health e-News Bulletin/NLH Public Health Newsletter

Adult Protection & Safeguarding Domestic Violence

[Male domestic abuse victims 'sleeping in cars and tents'](#)

[France rolls out GPS trackers to curb domestic violence](#)

Addiction

[Reinventing EMS response to substance abuse, mental health emergencies](#)

[Substance-abuse treatment inquiries increased 22% in Texas since COVID-19 pandemic](#)



Allergies

[Kids' allergy symptoms can sometimes mimic those of COVID-19](#)



Cardiovascular Disease

[Digital Cardiovascular Biomarker Responses to Transcutaneous Cervical Vagus Nerve Stimulation: State-Space Modeling, Prediction, and Simulation](#)

[World's largest study of cardiovascular disease in type 2 diabetes shows need for improved knowledge and disease management](#)



Complementary Medicine / Alternative Medicine

[Lead and other heavy metals found in alternative medicine](#)

Critical Care

[London's biggest hospital set to reopen Covid intensive care ward](#)

[Local health systems experts used modelling tools to better predict critical care demand](#)



Dental

[More than half of UK dental practices relied on loans during lockdown](#)

Dementia

[A Personalized Voice-Based Diet Assistant for Caregivers of Alzheimer Disease and Related Dementias: System Development and Validation](#)

[Digital tech has health benefits for dementia patients, project finds](#)

[Police and fire service launch wearable tech initiative to help people affected by dementia](#)

Diabetes

[Patient Portal Functionalities and Patient Outcomes Among Patients With Diabetes: Systematic Review](#)

[Type 2 diabetes: The sexual problem caused by nerve damage due to high blood sugar](#)



Diet, Nutrition and Obesity

[Global Changes and Factors of Increase in Caloric/Salty Food Intake, Screen Use, and Substance Use During the Early COVID-19 Containment Phase in the General Population in France: Survey Study](#)

[Happy Gut, Happy Mind: how the state of your gut affects your mental health](#)

Digital Health Technology



[Exploring the Usage Intentions of Wearable Medical Devices: A Demonstration Study](#)

[Hospital Epidemics Tracker \(HEpiTracker\): Description and pilot study of a mobile app to track COVID-19 in hospital workers](#)

[A Smartphone App to Monitor Mood Symptoms in Bipolar Disorder: Development and Usability Study](#)



End of Life Care

[Palliative care: 'Much more than end-of-life support'](#)

[Investing in palliative care will help build a more compassionate society](#)

Equality

[Heroes in Harm's Way: Covid-19 show sparks sexism debate in China](#)

[Prejudice and discrimination toward immigrants](#)

[Sociodemographic inequality in exposure to COVID-19-induced economic hardship in the United Kingdom](#)



Immunisation and Infection

The Prevention of Infection

[Dynamic Panel Estimate–Based Health Surveillance of SARS-CoV-2 Infection Rates to Inform Public Health Policy: Model Development and Validation](#)

[Dynamic Panel Estimate–Based Health Surveillance of SARS-CoV-2 Infection Rates to Inform Public Health Policy: Model Development and Validation](#)

Learning Disability and Challenging Behaviour

[Investigational Stimulant Found Effective, Safe for Treatment of ADHD Symptoms in Adults](#)

[Novel Stimulant Effective for Adult ADHD, Regardless of Prior Stimulant Exposure](#)



Men's Health

[Does Anyone Actually Need a Men's Multivitamin?](#)

[The coronavirus is most deadly if you are older and male — new data reveal the risks](#)

Mental Health



[The VOICES Typology of Curatorial Decisions in Narrative Collections of the Lived Experiences of Mental Health Service Use, Recovery, or Madness: Qualitative Study](#)

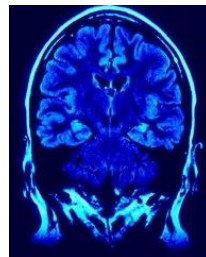
[Suicidal Thoughts and Behaviors and Their Associations With Transitional Life Events in Men and Women: Findings From an International Web-Based Sample](#)

[Virtual Trauma-Focused Therapy for Military Members, Veterans, and Public Safety Personnel With Posttraumatic Stress Injury: Systematic Scoping Review](#)

[Suicidal Thoughts and Behaviors and Their Associations With Transitional Life Events in Men and Women: Findings From an International Web-Based Sample](#)

[Self-Practice of Stabilizing and Guided Imagery Techniques for Traumatized Refugees via Digital Audio Files: Qualitative Study](#)

[Exploring Participants' Experiences of a Web-Based Program for Bulimia and Binge Eating Disorder: Qualitative Study](#)



Neurology

[Neurological consequences of COVID-19: The 'Silent Wave'](#)

[NeuroCOVID: it's time to join forces globally](#)

Obstetrics

[Assessing the Effectiveness of Policies Relating to Breastfeeding Promotion, Protection, and Support in Southeast Asia: Protocol for a Mixed Methods Study](#)

[The courage of compassion: supporting nurses and midwives to deliver high-quality care.](#)

[Understanding the Steps Toward Mobile Early Intervention for Mothers and Their Infants Exiting the Neonatal Intensive Care Unit: Descriptive Examination](#)



Oncology

[Breast Cancer Survivors' Perspectives on Motivational and Personalization Strategies in Mobile App–Based Physical Activity Coaching Interventions: Qualitative Study](#)

[Facing Moral Distress as an Oncology Nurse](#)

Ophthalmology

[Exploring novel gene therapy approaches to treat ocular disease](#)

[Robotics: Allowing surgeons to perform the seemingly impossible](#)

Orthopaedics

[Sexual harassment of women during orthopedic training remains pervasive](#)



Paediatrics

[Pediatric Telebehavioral Health: A Transformational Shift in Care Delivery in the Era of COVID-19](#)

[School-Based Multicomponent Intervention to Promote Physical Activity and Reduce Sedentary Time of Disadvantaged Children Aged 6-10 Years: Protocol for a Randomized Controlled Trial](#)

Patient Experience

[Effect of Prior Health Knowledge on the Usability of Two Home Medical Devices: Usability Study](#)

[How People with Parkinson's Disease and Health Care Professionals Wish to Partner in Care Using eHealth: Co-Design Study](#)

[The VOICES Typology of Curatorial Decisions in Narrative Collections of the Lived Experiences of Mental Health Service Use, Recovery, or Madness: Qualitative Study](#)



Pharmacology

[Interventions to Improve Statin Tolerance and Adherence in Patients at Risk for Cardiovascular Disease: A Systematic Review for the 2020 U.S. Department of Veterans Affairs and U.S. Department of Defense Guidelines for Management of Dyslipidemia](#)

[Natural history of uncomplicated urinary tract infection without antibiotics: a systematic review](#)

[Inhaled mannitol for cystic fibrosis](#)

[NIHR Alert: More precise classification of risk in prostate cancer reveals a huge variation in treatment](#)

[The Impact of Brexit on the Pharmaceutical Supply Chain of the United Kingdom: Scoping Review Protocol](#)

Rehabilitation

[Impacts of Motion-Based Technology on Balance, Movement Confidence, and Cognitive Function Among People With Dementia or Mild Cognitive Impairment: Protocol for a Quasi-Experimental Pre- and Posttest Study](#)



Seniors and Aging

[Awareness of and Attitudes Toward User Involvement in Research on Aging and Health: Protocol for a Quantitative Large-Scale Panel Study](#)

[Cadbury celebrates older people by finding out fun stories from their past](#)

[Older People Are Physically And Mentally Fitter Than 30 Years Ago, Says Finland Study](#)



Sexual Health

[Online Navigation for Pre-Exposure Prophylaxis via PleasePrEPMe Chat for HIV Prevention: Protocol for a Development and Use Study](#)

[Mobile-Enhanced Prevention Support Study for Men Who Have Sex With Men and Transgender Women Leaving Jail: Protocol for a Randomized Controlled Trial](#)

[Evaluation of the Sexual Health Behaviors of Black Male Adolescents and Young Adults Through Social Media Platforms: Web-Based Survey Study](#)

[Nurse Educational Workshop Improves Communications With Patients About Sexual Health](#)

Sleep

[Increased Internet Searches for Insomnia as an Indicator of Global Mental Health During the COVID-19 Pandemic: Multinational Longitudinal Study](#)

Surgery

[Venous leg ulcers heal faster with early surgery vs. compression, trial shows](#)

[Colorectal Surgery in the time of Covid 19](#)



Vaping/Smoking

[A Mobile Social Network–Based Smoking Cessation Intervention for Chinese Male Smokers: Protocol for a Pilot Randomized Controlled Trial](#)

[Smokers urged to join 'Stoptober' as quitting rate in England rises](#)



Women's Health

[Coronavirus crisis triggered global mental health crisis for women, first-of-its-kind study finds](#)

[Female employees have more health and wellbeing concerns than their male colleagues](#)

World Health Organisation

[Managing the COVID-19 infodemic: Promoting healthy behaviours and mitigating the harm from misinformation and disinformation](#)

[Tobacco responsible for 20% of deaths from coronary heart disease](#)

[Boost for global response to COVID-19 as economies worldwide formally sign up to COVAX facility](#)

Wound Management

[How to improve the surgery backlog during COVID-19](#)

[A new approach to understanding the biology of wound healing](#)

SOCIAL AND COMMUNITY CARE

[Get the latest news on coronavirus's impact on social work](#)

[Chief social workers say suspension of Care Act duties should continue through winter](#)

[Mental health social work 'must do better' as study finds less staff diversity than in rest of profession](#)

[Staff abused women at learning disability unit, finds CQC](#)

[Higher NHS pay for forensic social workers causing recruitment challenge for councils](#)

['Data sharing, supported by machine learning, can deliver better outcomes for children and families'](#)

[UPDATED: Chief social workers say suspension of Care Act duties should continue through winter](#)

[The Digital Skills, Experiences and Attitudes of the Northern Ireland Social Care Workforce Toward Technology for Learning and Development: Survey Study](#)

Key Resources

[Social Care TV](#)

[e-Learning](#)

[Social Care Online](#)

[Research Register for Social Care](#)

[Social Care Research Ethics Committee](#)

[All SCIE resources](#)

HEALTH MANAGEMENT

[Exclusive: 'Dangerous overcrowding' in A&Es as cases rise](#)

[Long-standing NHS leader to head up London people board](#)

[HSJ Partnership Awards deadline extended](#)

[Chief exec of NHS agency resigns](#)

[Cowper's Cut: The Ministry Of Unsound: Is Dido Harding getting another, even bigger, job?](#)

[A market for residential care services](#)

[Could better connecting of data lead to a cure for Covid-19?](#)

[Countess of Chester selects Ideal firm to implement EPR programme](#)

[Digital Health Unplugged: Power of data in a pandemic](#)

[Festival of learning wellbeing and inclusion](#)

['Long covid' clinics still not operating despite Hancock claim](#)

[Gov medical advisors should resign or speak out over England's failing covid strategy](#)

[HSJ podcast: What a second wave means for NHS staff](#)

[More mental health trusts will merge with acutes, chief predicts](#)

[Staff filmed 'slapping and kicking' patients](#)

[How can the NHS further accelerate advances in digital communication with patients?](#)

[Nursing boost for England's NHS](#)

[Staff filmed 'slapping and kicking' patients](#)

[GPs asked for further support to care providers](#)

[Can digital technology help clinicians make safer, more efficient decisions?](#)

QUALITY IMPROVEMENT AGENDA

[The discontinuation of contact precautions for methicillin-resistant Staphylococcus aureus and vancomycin-resistant Enterococcus: Impact upon patient adverse events and hospital operations](#)

[Impact of multidisciplinary team huddles on patient safety: a systematic review and proposed taxonomy](#)

[Emotionally evocative patients in the emergency department: a mixed methods investigation of providers reported emotions and implications for patient safety](#)

[Impact of an education and multilevel social comparison-based intervention bundle on use of routine blood tests in hospitalised patients at an academic tertiary care hospital: a controlled pre-intervention post-intervention study](#)

[What do emergency department physicians and nurses feel? A qualitative study of emotions, triggers, regulation strategies, and effects on patient care](#)

[Do bedside whiteboards enhance communication in hospitals? An exploratory multimethod study of patient and nurse perspectives](#)

[Effects of CPOE-based medication ordering on outcomes: an overview of systematic reviews](#)

EVIDENCE BASED PRACTICE

[What does it take to be a leader in evidence-based healthcare?](#)

[PGCert in TEBHC: thoughts from a current student](#)

BMJ|Evidence Centre

[Age is the most important clinical feature to help rule out cardiac syncope](#)

[Implantable cardioverter-defibrillators in dialysis patients](#)

[Contemporary communication in a clinical trial](#)

[Should oral iron be dismissed in patients with heart failure?](#)

[What to do with a clinical trial with conflicts of interest](#)

[Open-label placebo clinical trials: is it the rationale, the interaction or the pill?](#)

[HOSPITAL Score, LACE Index and LACE+ Index as predictors of 30-day readmission in patients with heart failure](#)

[Thrombolysis with alteplase 3-4.5 hours after acute ischaemic stroke: trial reanalysis adjusted for baseline imbalances](#)

[The need for clinical judgement in the application of evidence-based medicine](#)

[Evaluation of spin in abstracts of papers in psychiatry and psychology journals](#)



[Means restriction to prevent suicide on roads](#)

[Presurgery exercise-based conditioning interventions \(prehabilitation\) in adults with peripheral arterial disease, having leg surgery](#)

[Protein supplementation of human milk for promoting growth in preterm infants](#)

[Alcohol intake reduction for controlling hypertension](#)

[Medication to prevent infection of the eye in newborns](#)

[Magnesium for muscle cramps](#)

[Continuous infusion of loop diuretics are safer and more effective than intermittent administration for people with congestive heart failure](#)

[Vitamin D supplementation for sickle cell disease](#)

NICE Clinical Knowledge Summaries provides primary care practitioners with a readily accessible summary of the current evidence base and practical guidance on best practice in respect of over 300 common and/or significant primary care presentations.

The service is being regularly maintained and upgraded as and when significant new evidence emerges and up to 10 new topics will be added each year. You can access the service [here](#).

National Institute for Health Research (NIHR) Health Technology Assessment

[Common pelvic pain drug is ineffective, NIHR research finds](#)

[Over 250,000 volunteers now registered for new COVID-19 vaccine trials as recruitment begins for Novavax study](#)

DoH Press Releases/New Publications

[Transparency data: Number of coronavirus tests processed by local authority \(England\): 28 May to 16 September 2020](#)

[Transparency data: NHS Test and Trace \(England\) and coronavirus testing \(UK\) statistics: 10 September to 16 September 2020](#)

[Transparency data: Daily tests processed and testing capacity \(UK\): 20 March to 22 September 2020](#)

[Guidance: NHS Test and Trace statistics \(England\): methodology](#)

[Detailed guide: Coronavirus antibody home test kit: taking a blood sample](#)

[Press release: NHS COVID-19 app launches across England and Wales](#)

[Guidance: NHS COVID-19 app: privacy information](#)

[Guidance: Coronavirus Act analysis](#)

[Guidance: Assessment and procurement of coronavirus \(COVID-19\) tests](#)

[Guidance: Face coverings: when to wear one, exemptions, and how to make your own](#)

LIBRARY "BITS AND PIECES"

The above current awareness bulletin has been produced by Keyll Darree Library and Information Service. We aim to produce the bulletin every week. If you need any help locating or accessing any of the items included in this issue, please contact the library staff on 642993/642974.

As usual, we welcome any feedback, so please let us know if you have any comments about format, content, length, arrangement or indeed, any other observations. If you know of anyone else who might like to receive the bulletin, or you would like your name removed from the distribution list, again, please let us know.

Check out our library website at www.librarykeylldarree.gov.im for details of all our services, facilities and any forthcoming events.