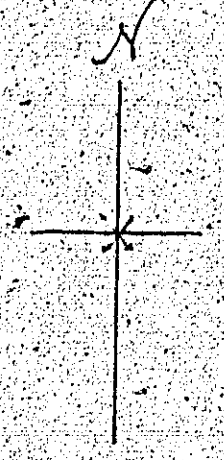
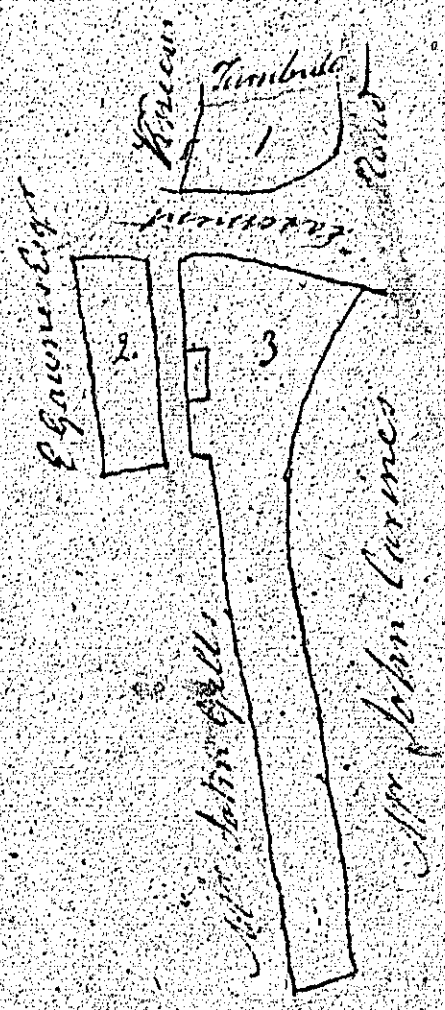


Not used

129



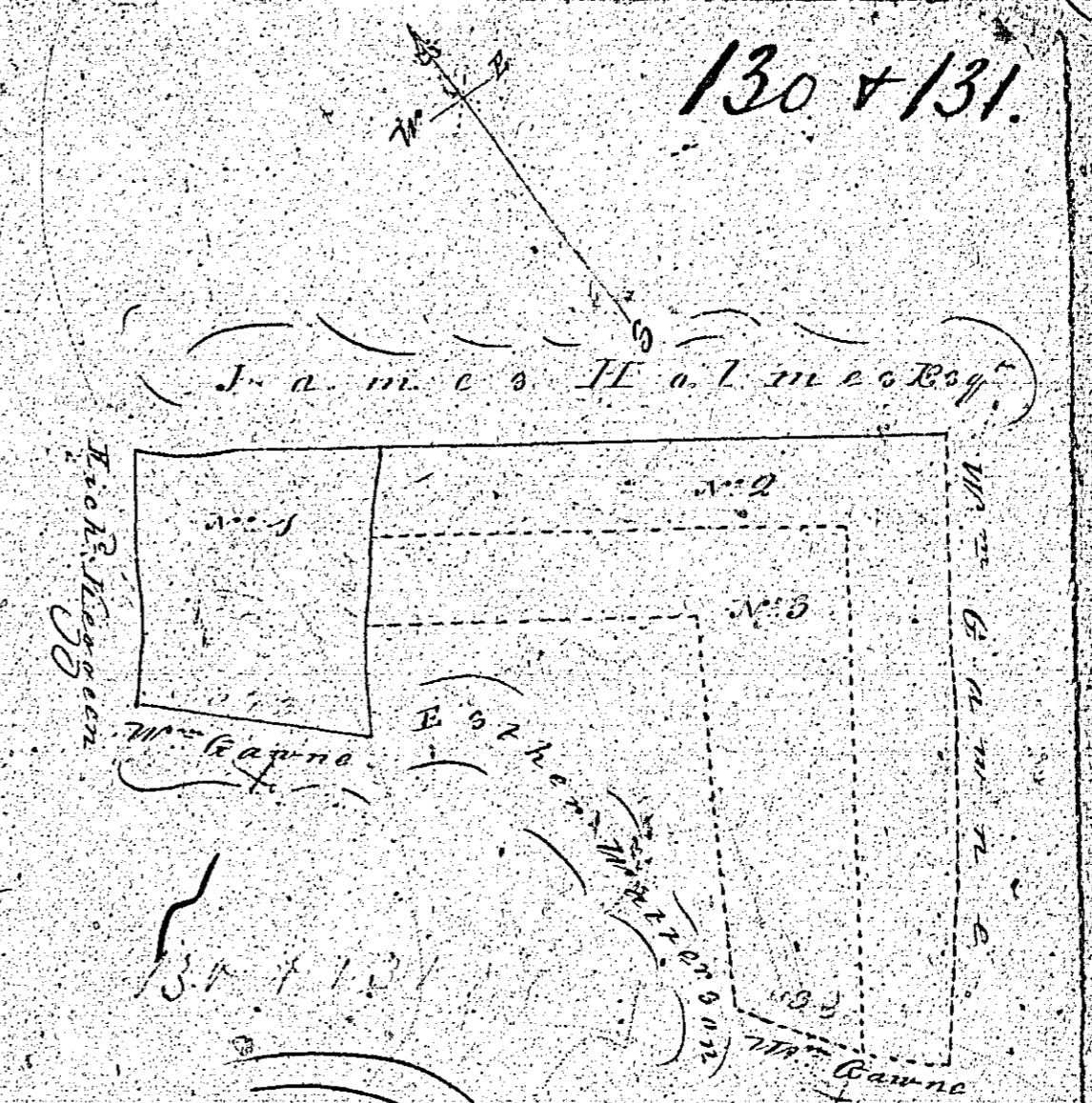
	A R P
1	24
2	25
3	2.30
	<u>0-3-39</u>

Scale two chains to an inch

129

Part of the
 Land of County, Calvey
 in the parish of Roshin
 the property of
 Mrs. Margt. Higgen
 surveyed 1837 by
 A. Curgen

No 111
130 + 131



Plan of Survey
of part of the Quarterland of Cregneash
in the Parish of St. Christ. Bushen
the property of
Mr. James Kelly

Contents

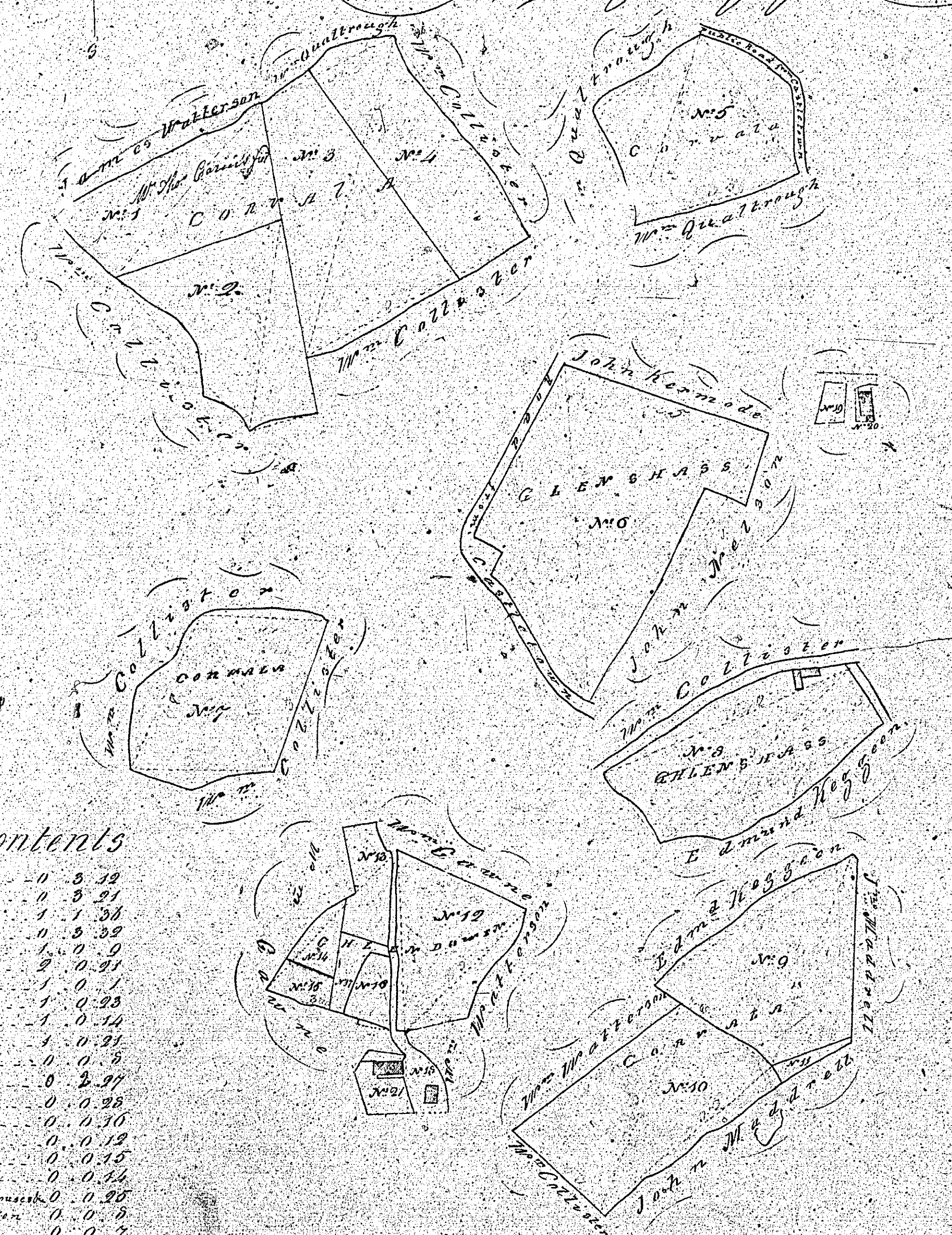
1	1. 2. 3. 4. 5. 6. 7. 8. 9. 10. 11. 12. 13. 14. 15. 16. 17. 18. 19. 20. 21. 22. 23. 24. 25. 26. 27. 28. 29. 30. 31. 32. 33. 34. 35. 36. 37. 38. 39. 40. 41. 42. 43. 44. 45. 46. 47. 48. 49. 50. 51. 52. 53. 54. 55. 56. 57. 58. 59. 60. 61. 62. 63. 64. 65. 66. 67. 68. 69. 70. 71. 72. 73. 74. 75. 76. 77. 78. 79. 80. 81. 82. 83. 84. 85. 86. 87. 88. 89. 90. 91. 92. 93. 94. 95. 96. 97. 98. 99. 100.	James Kelly's field.
2	2. 1. 2. 3. 4. 5. 6. 7. 8. 9. 10. 11. 12. 13. 14. 15. 16. 17. 18. 19. 20. 21. 22. 23. 24. 25. 26. 27. 28. 29. 30. 31. 32. 33. 34. 35. 36. 37. 38. 39. 40. 41. 42. 43. 44. 45. 46. 47. 48. 49. 50. 51. 52. 53. 54. 55. 56. 57. 58. 59. 60. 61. 62. 63. 64. 65. 66. 67. 68. 69. 70. 71. 72. 73. 74. 75. 76. 77. 78. 79. 80. 81. 82. 83. 84. 85. 86. 87. 88. 89. 90. 91. 92. 93. 94. 95. 96. 97. 98. 99. 100.	James Kelly's Mountain.
3	3. 1. 2. 3. 4. 5. 6. 7. 8. 9. 10. 11. 12. 13. 14. 15. 16. 17. 18. 19. 20. 21. 22. 23. 24. 25. 26. 27. 28. 29. 30. 31. 32. 33. 34. 35. 36. 37. 38. 39. 40. 41. 42. 43. 44. 45. 46. 47. 48. 49. 50. 51. 52. 53. 54. 55. 56. 57. 58. 59. 60. 61. 62. 63. 64. 65. 66. 67. 68. 69. 70. 71. 72. 73. 74. 75. 76. 77. 78. 79. 80. 81. 82. 83. 84. 85. 86. 87. 88. 89. 90. 91. 92. 93. 94. 95. 96. 97. 98. 99. 100.	The Beggers Mountain.
Total	6. 3. 37	

Scale of Chains
to an Inch

The Civil Surveyor 1831

Plan and Survey
 of part of the Estates of Corrala Ghenass & Glendowry
 in the Parish of St. Christ Rushem
 the property of
 M^{rs} Mary Higgins

132

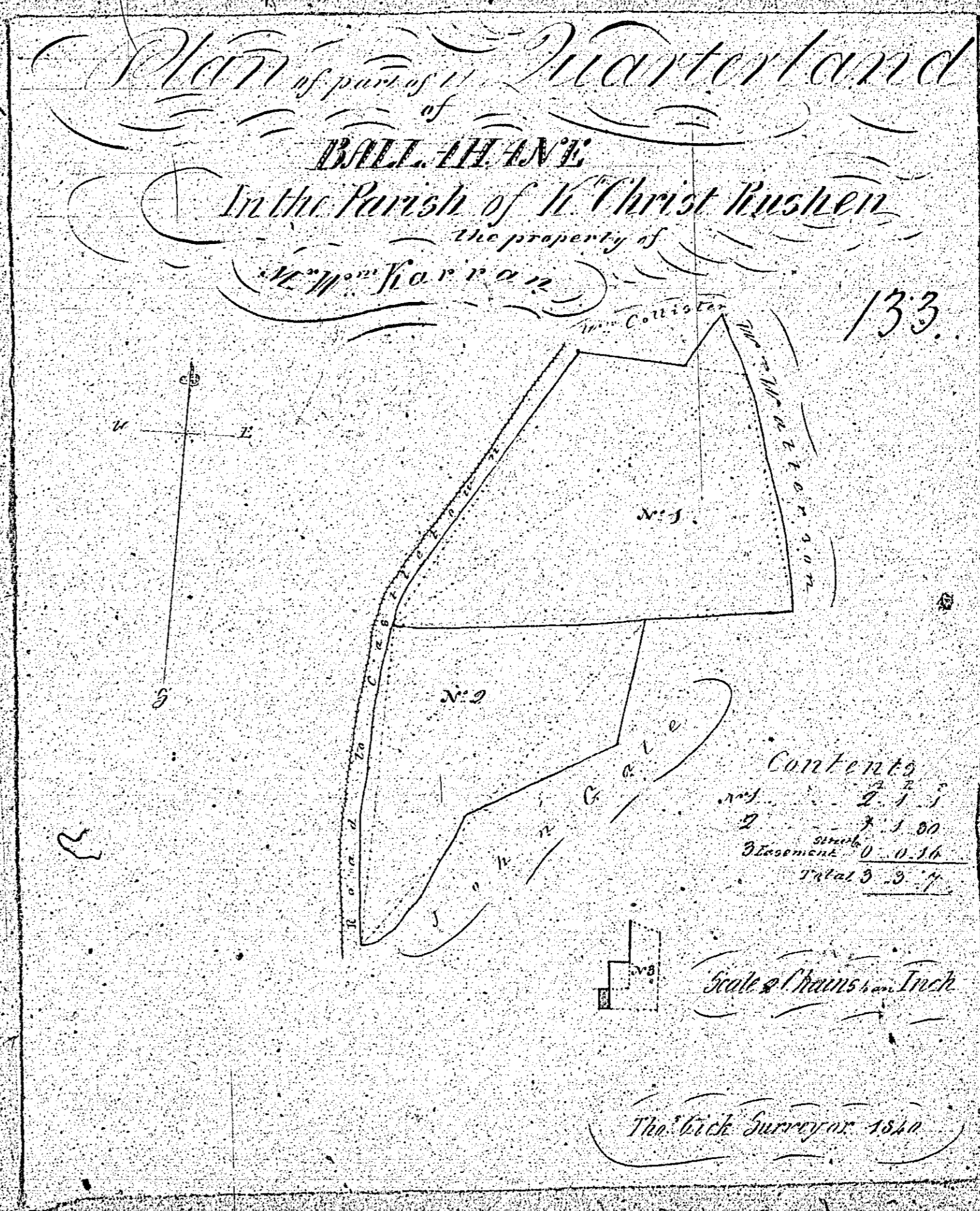


Contents

0	5	39
0	5	31
1	1	38
0	5	38
1	0	0
2	0	91
1	0	1
1	0	35
1	0	14
1	0	3
0	0	8
0	0	38
0	0	36
0	0	12
0	0	15
0	0	14
0	0	28
0	0	5
0	0	1
0	0	11
0	0	4

Scale 2 Chains to an Inch

The Clerk Surveyor 1850



Witness

134.

Plan and Survey
of part of Quarter Land
of 1000 Acres
in the Parish of St. Andrew
the property
of Richard Hoggan
N.B. Half of the House
belongs to
Messrs. Hoggan & Co.



134

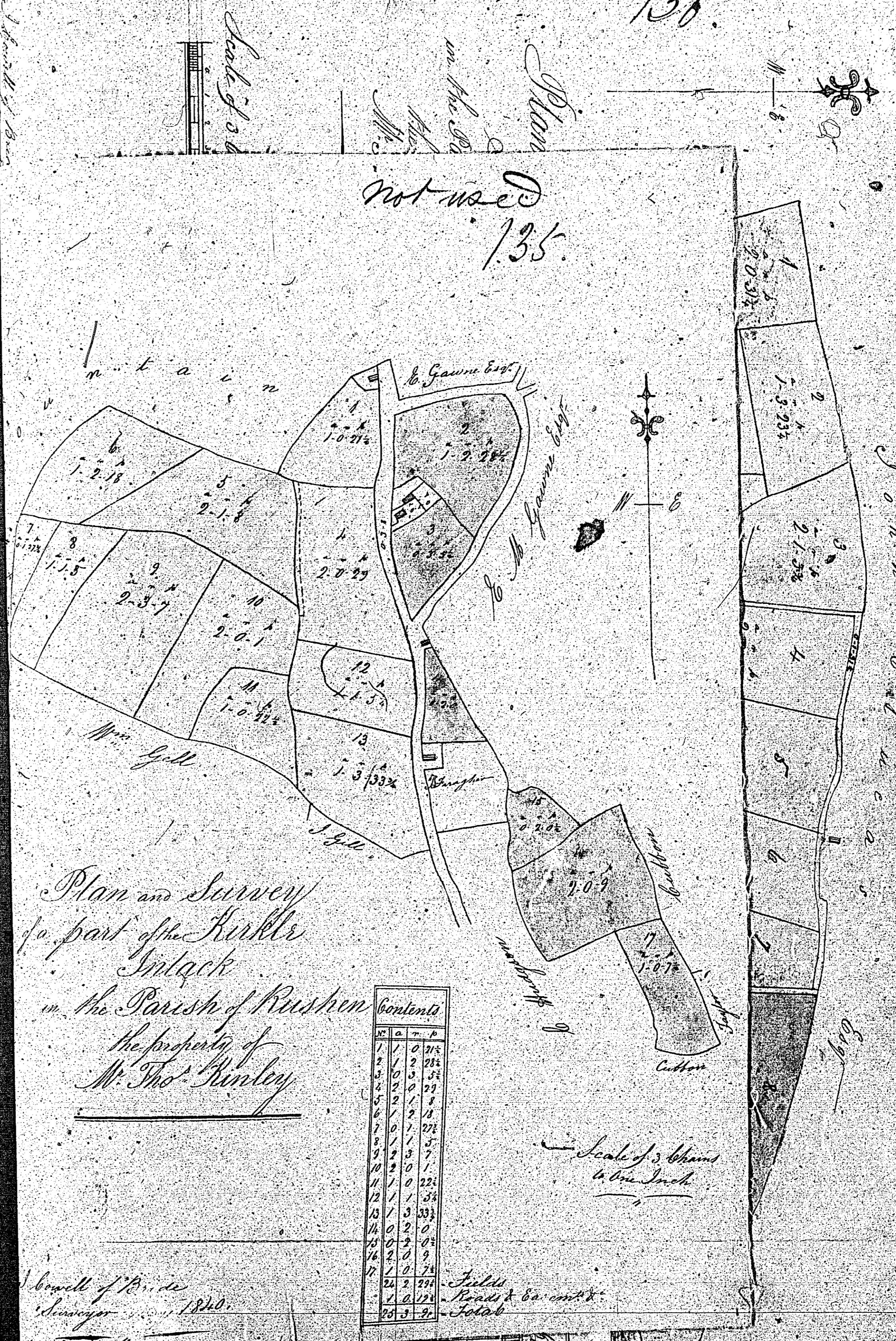
Contents
No. 1. 1. 2. 9
2. 0. 0. 8
3. 0. 0. 5
4. 0. 0. 6
Total. 7. 2. 21



Scale of Chains & an Inch

Thos. Cook Surveyor
1840

Not used
135



Plan and Survey
of a part of the Kirkbrant
Tack
in the Parish of Rushen
the property of
Mr. Tho. Binley

Contents			
No.	Ac.	R.	P.
1	0	0	21 1/2
2	1	2	28 1/2
3	10	0	5 1/2
4	2	0	19
5	2	1	8
6	1	2	18
7	0	7	27 1/2
8	1	5	7
9	2	3	7
10	2	0	1
11	1	0	22 1/2
12	1	1	5 1/2
13	1	3	33 1/2
14	0	2	0
15	0	2	0 1/2
16	2	0	9
17	1	0	7 1/2
22	2	2	27 1/2
Fields Roads & Enclosures			10 1/2
Total			26 3 1/2

Surveyed by
J. Binley

No.	Ac.	R.	P.
1	0	0	21 1/2
2	1	2	28 1/2
3	10	0	5 1/2
4	2	0	19
5	2	1	8
6	1	2	18
7	0	7	27 1/2
8	1	5	7
9	2	3	7
10	2	0	1
11	1	0	22 1/2
12	1	1	5 1/2
13	1	3	33 1/2
14	0	2	0
15	0	2	0 1/2
16	2	0	9
17	1	0	7 1/2
22	2	2	27 1/2
Fields Roads & Enclosures			10 1/2
Total			26 3 1/2