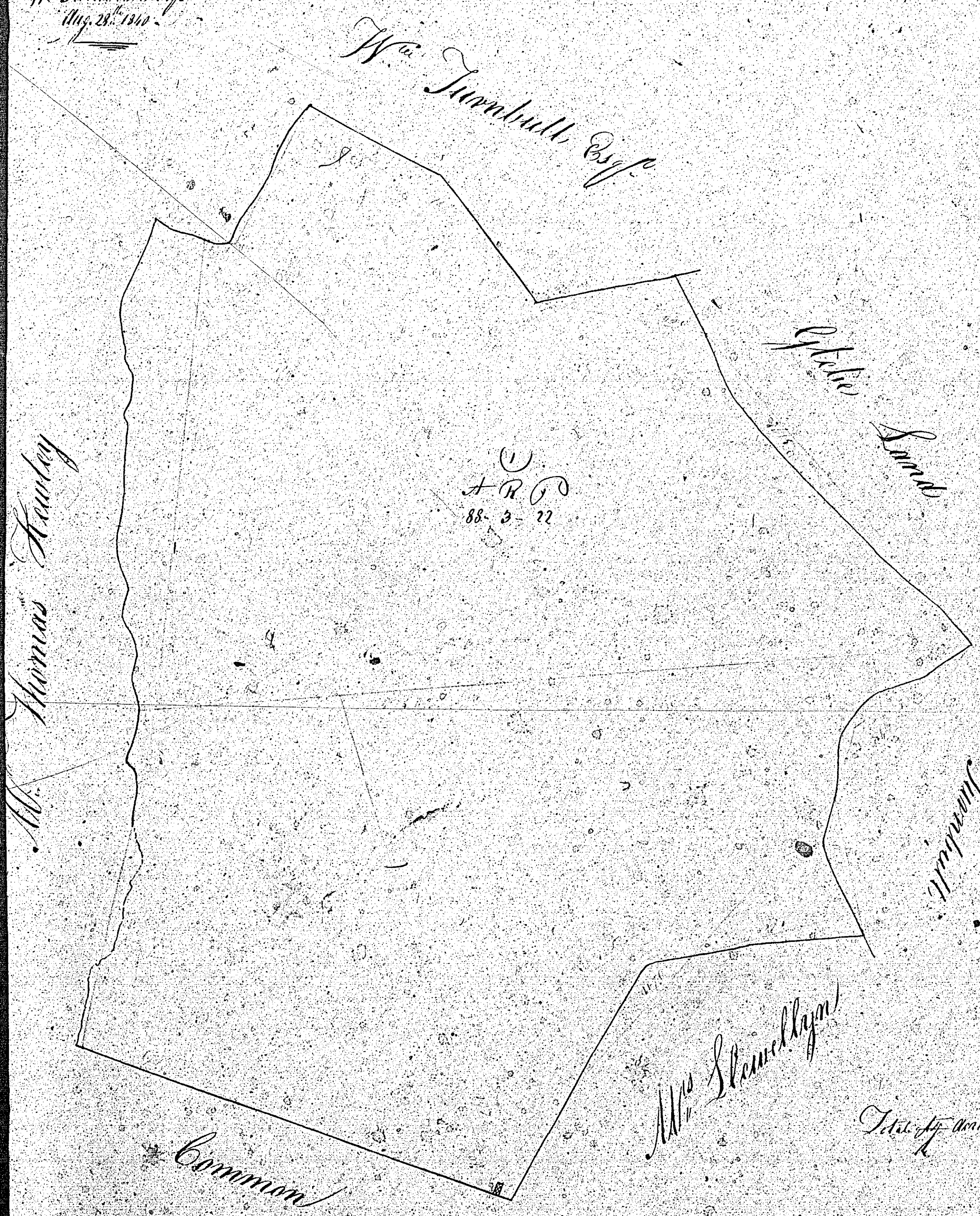
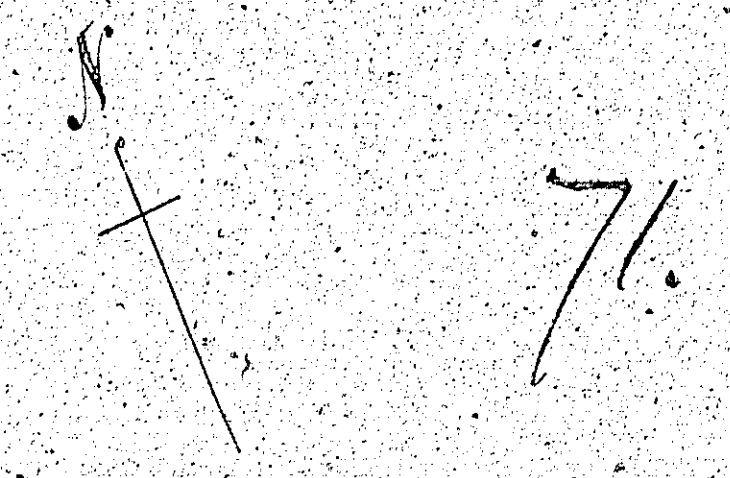




1887

Plan

Titlach Land
in the
Parish of Marown
adjoining the
State of Collinstown
the property of
Wm Turnbull Esq
Aug. 25th 1887



Mr Thomas Hawley

A.R.D.
88-3-22

A.R.D.
88-3-22

Three Chains to Inch

Joseph Blake Surveyor

END OF VOLUME