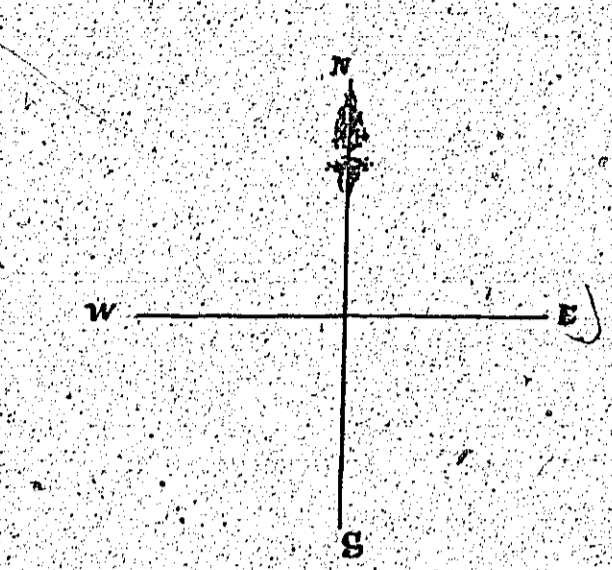
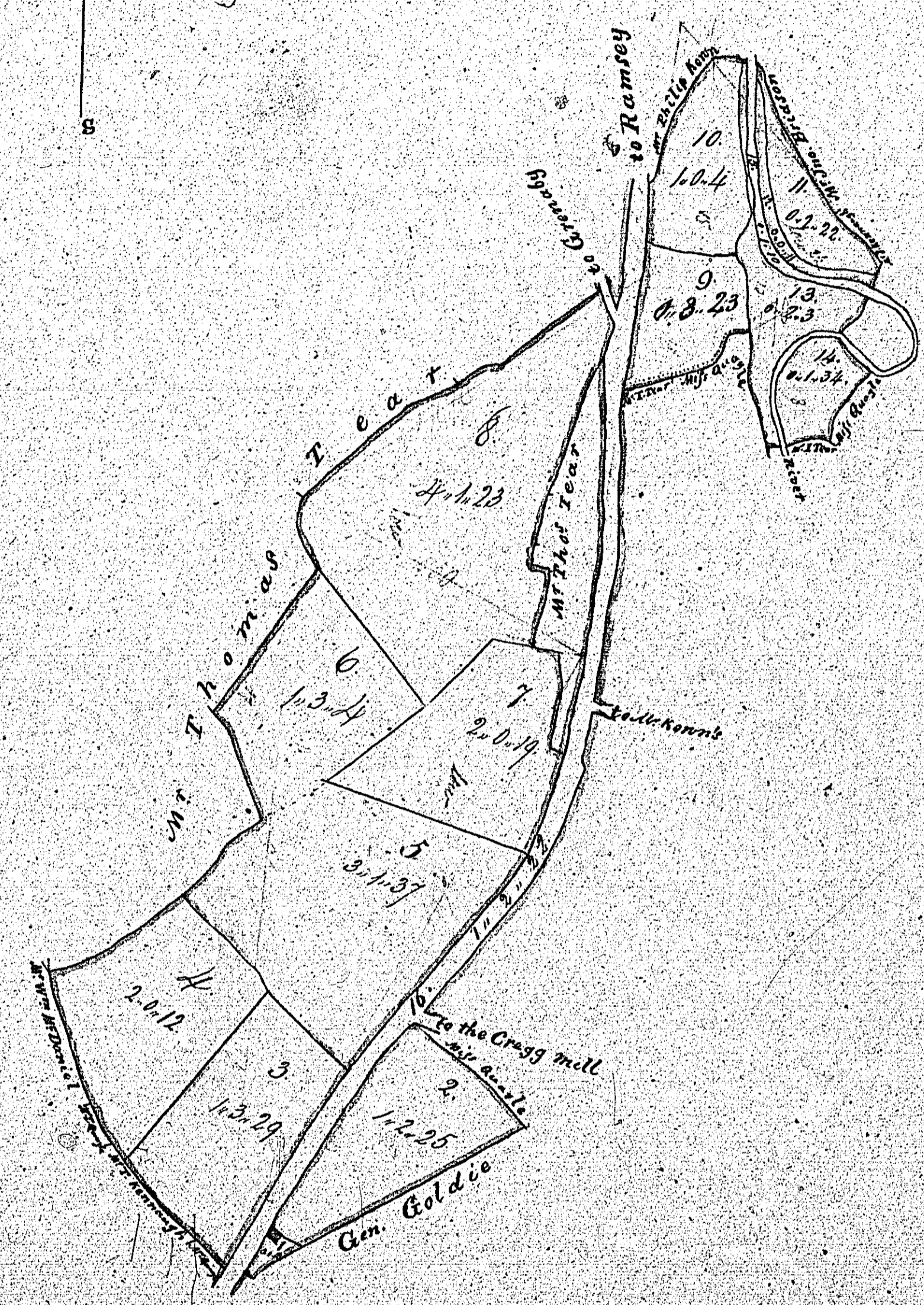


98

A  
**PLAN and Survey of BALLA-KEW**  
 in the Parish of MALEW belonging to  
**M<sup>r</sup> Thos Quayle**  
 May 1<sup>st</sup> 1840



Road & River			
No	A	R	P
15	0	1	10
16	1	2	22
Total	1	3	32



Collected			
No	A	R	P
1	0	0	23
2	1	2	23
3	1	3	29
4	2	0	12
5	3	1	37
6	1	3	4
7	2	0	19
8	4	0	23
9	0	3	23
10	1	0	4
11	0	2	23
12	0	0	11
13	0	2	3
14	0	1	34
Total	21	0	19

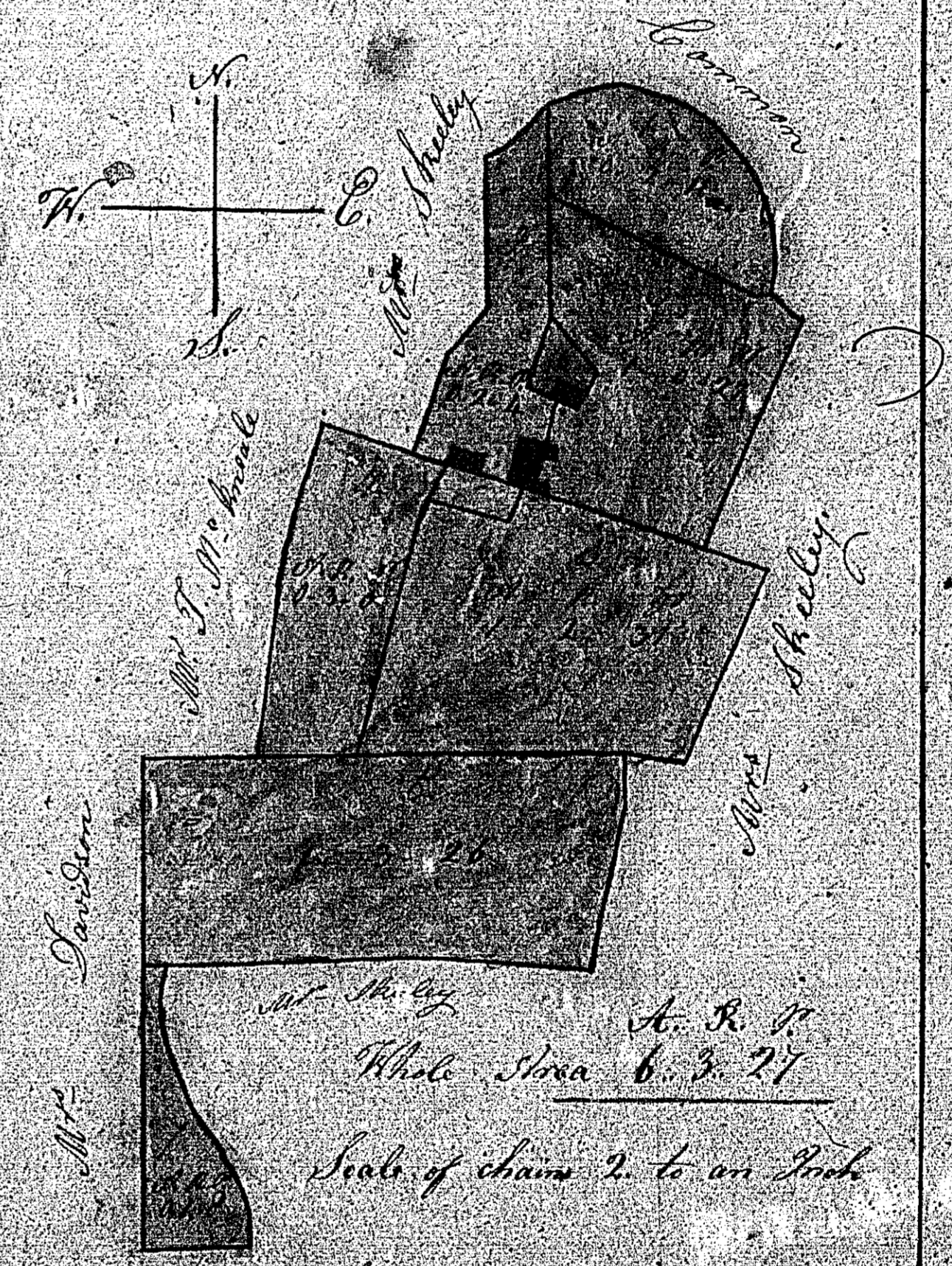
Wm Conley  
 Surveyor  
 Balla-Kew



UGAN CROFT  
the parish of

99

Plan  
of the  
Buttyvenney  
Parish of Malin  
The Property of  
Mr. Robt Quine



A. R. 17  
Whole Area 6. 3. 27  
Scale of chains 2. to an Inch  
S. Quine R. Braden 1844



GCAN CROFT

the parish of

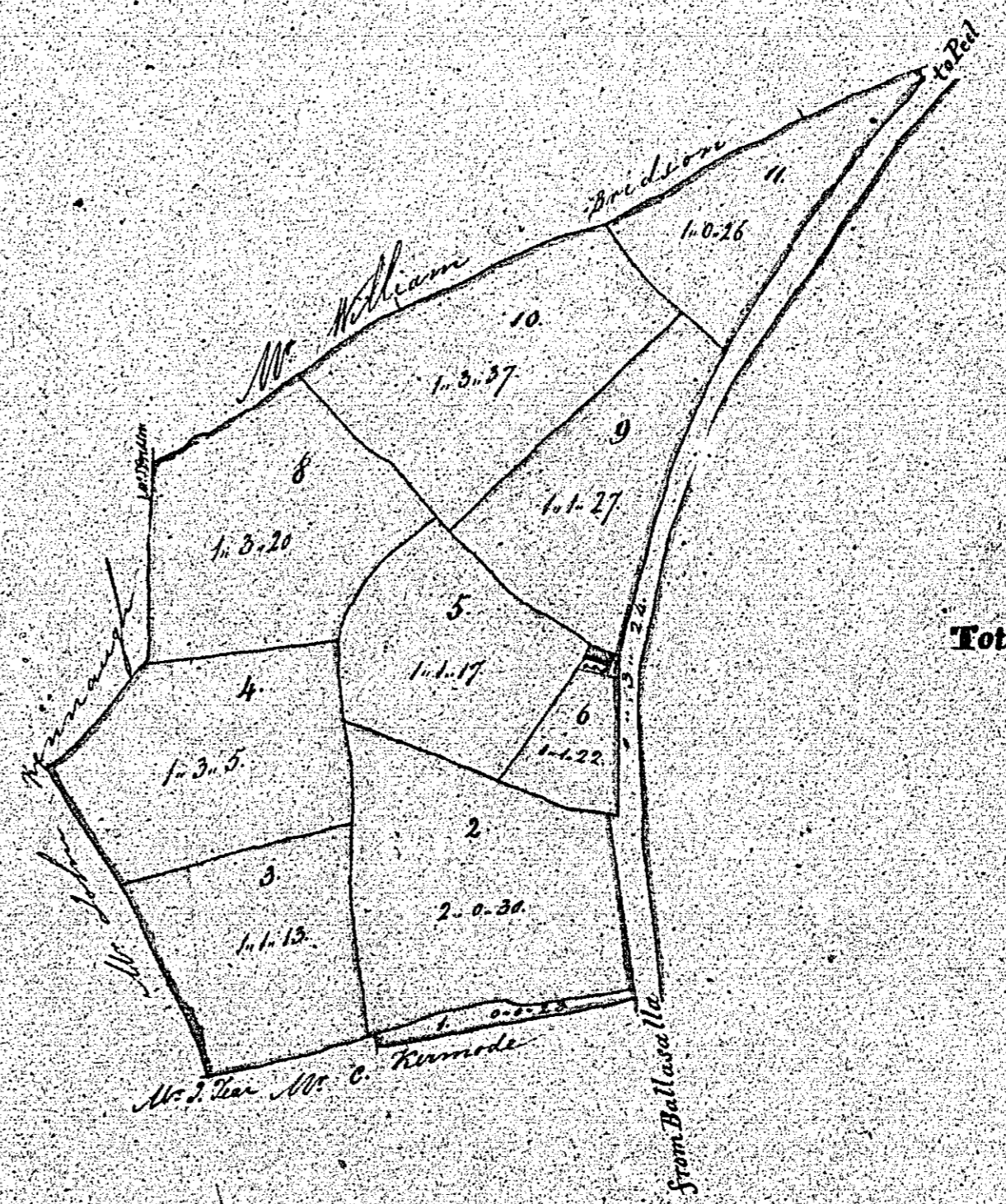
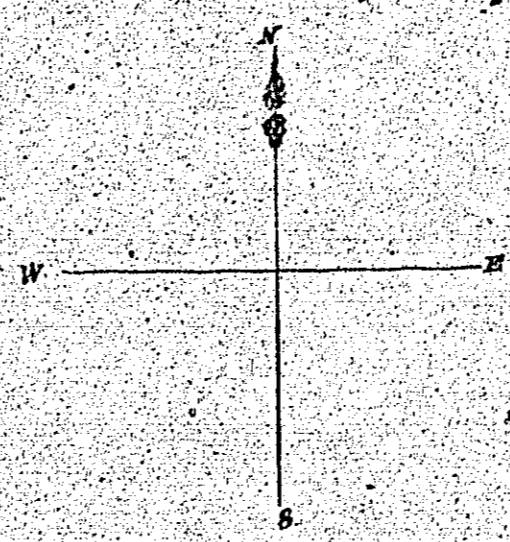
100

A

Plan and Survey of BALLANANK  
in the Parish of M. ALE W. belonging to

M<sup>r</sup> Rob<sup>t</sup> Quayle  
May 6<sup>th</sup> 1840

100



Collected

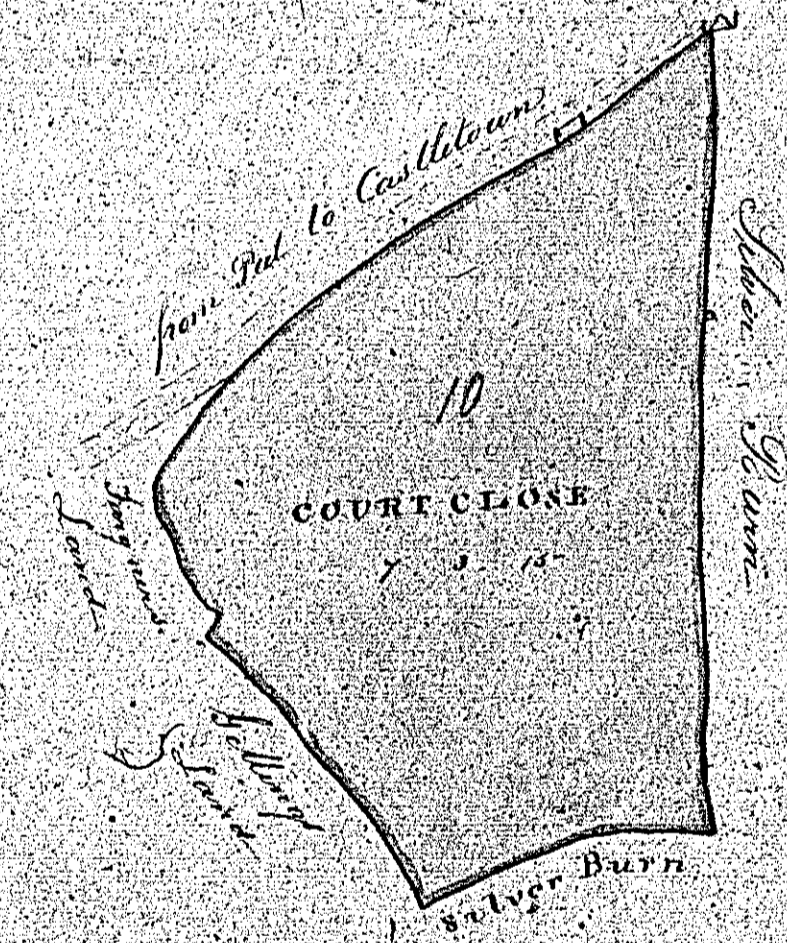
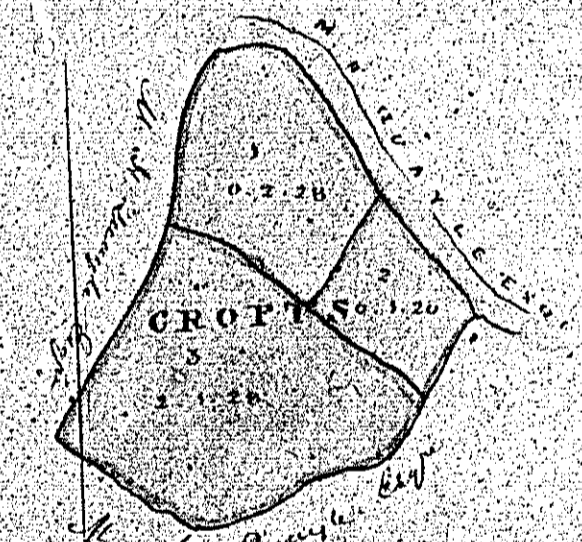
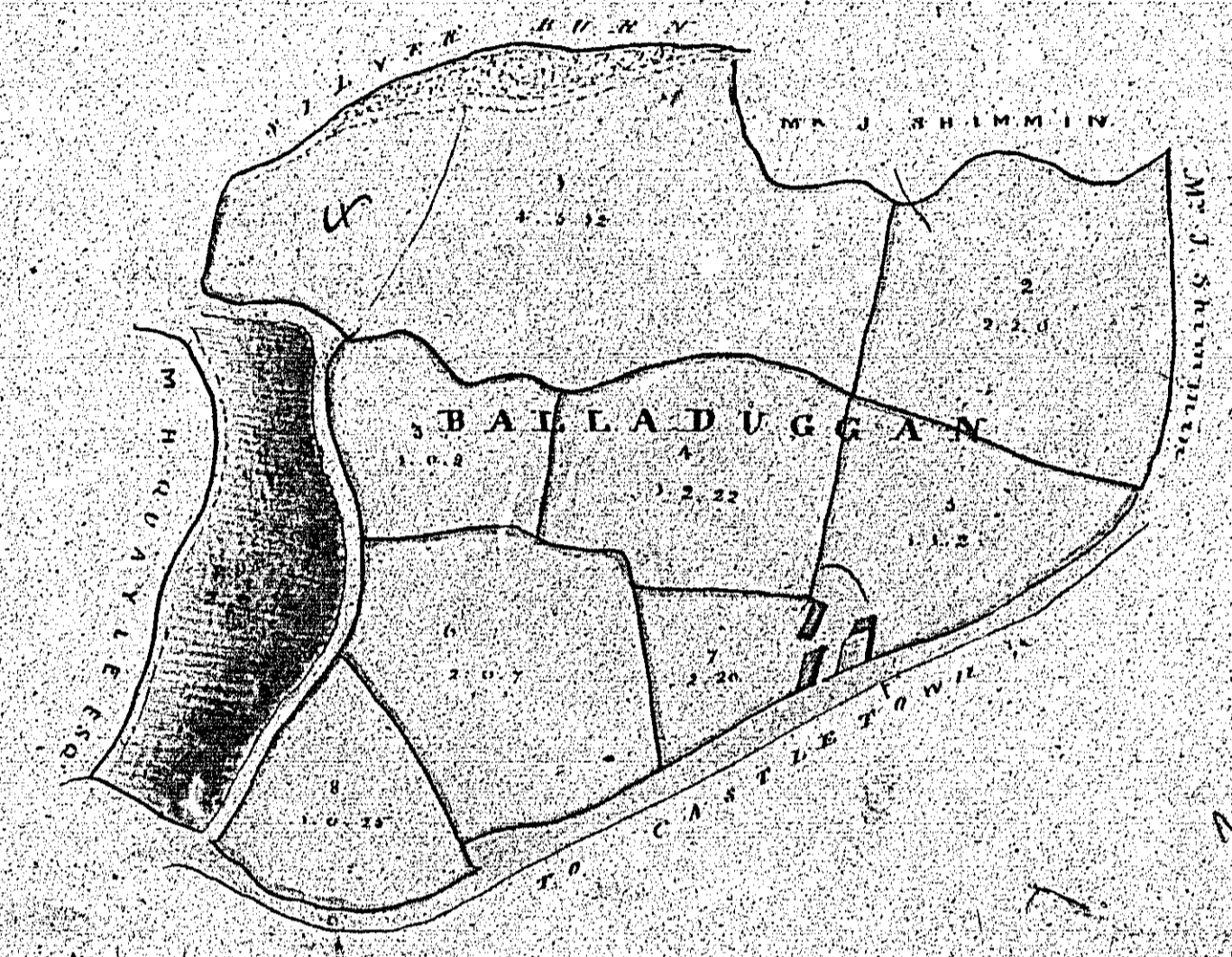
No.	A.	R.	P.
1	0	4	23
2	2	0	39
3	1	1	13
4	1	3	5
5	1	1	17
6	0	1	22
7	0	0	5
8	1	3	20
9	1	1	27
10	1	3	37
11	1	0	26
Total	13	2	251

By W<sup>m</sup> Cowley  
Schoolmaster  
Ballanank





Plan of part of the ESTATE of Balladuggan, BALLADUGGAN CROFT  
 the Court Close the property of W. H. Duayle Esq. situate in the parish of  
 Malens 101

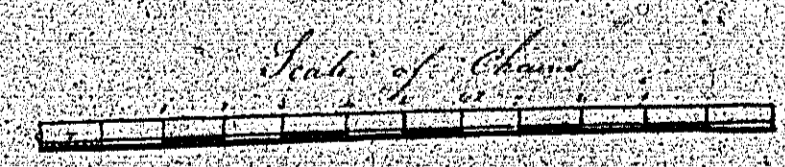


Land of which the title  
 has been purchased

Total

Balladuggan	47 0 30
the Croft	7 3 15
Court Close	3 1 36
Acres	58 2 5

Subst. taken of this field  
 in the year 1847  
 being 10 1/2



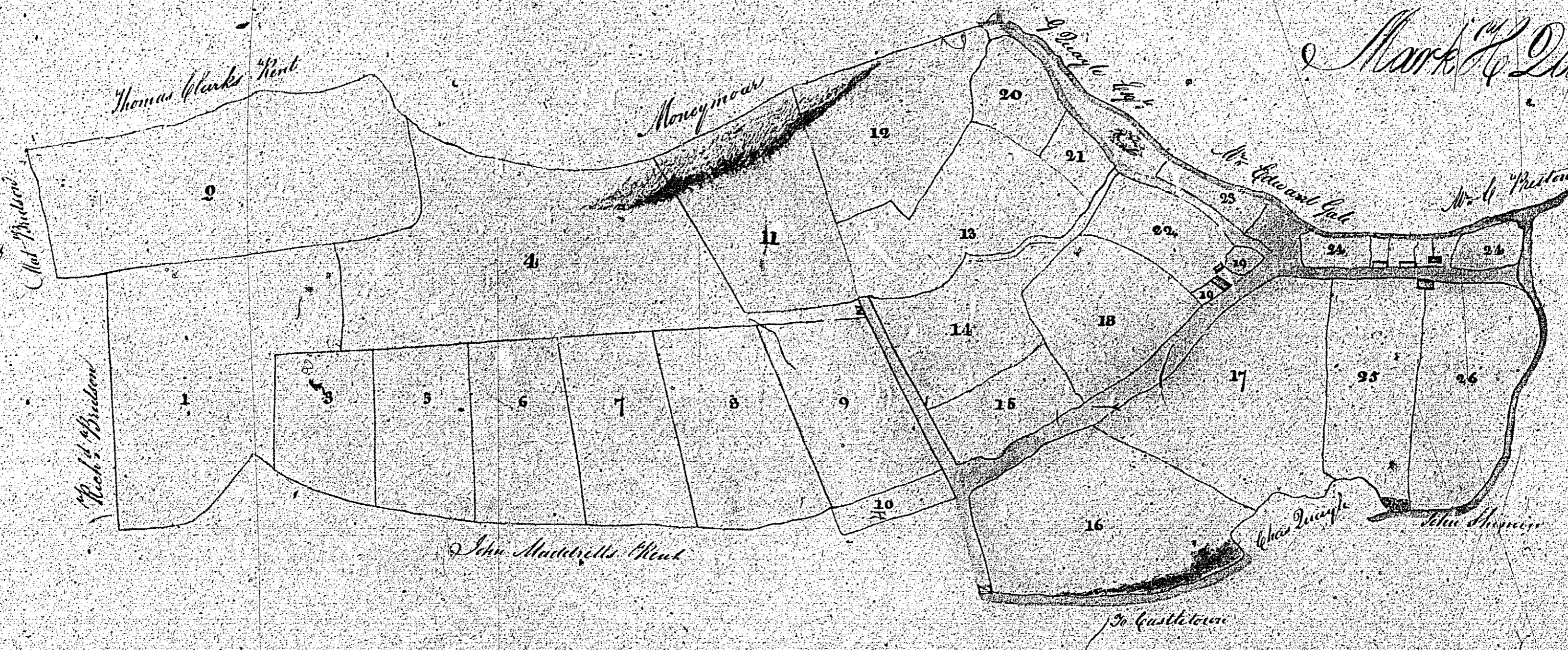
W. H. Duayle Esq.  
 Surveyor



Plan  
of  
**BALLACLONNA OR PERKIN HALL.**

*In the Parish of Malew*

THE PROPERTY OF



Particulars

1	2	3	4	5	6	7	8	9	10	11	12	13	14	15	16	17	18	19	20	21
1	1	1	1	1	1	1	1	1	1	1	1	1	1	1	1	1	1	1	1	1
1	1	1	1	1	1	1	1	1	1	1	1	1	1	1	1	1	1	1	1	1
1	1	1	1	1	1	1	1	1	1	1	1	1	1	1	1	1	1	1	1	1

*Surveyed by D. May 29 Oct 1841.  
Copied by D. W. H. 21 Nov 1841.*

**ISLE OF MAN GOVERNMENT: GENERAL REGISTRY**  
**TITHE PLANS: PARISH OF MALEW**  
Original coloured 1:30



The two following plans are  
numbered 103