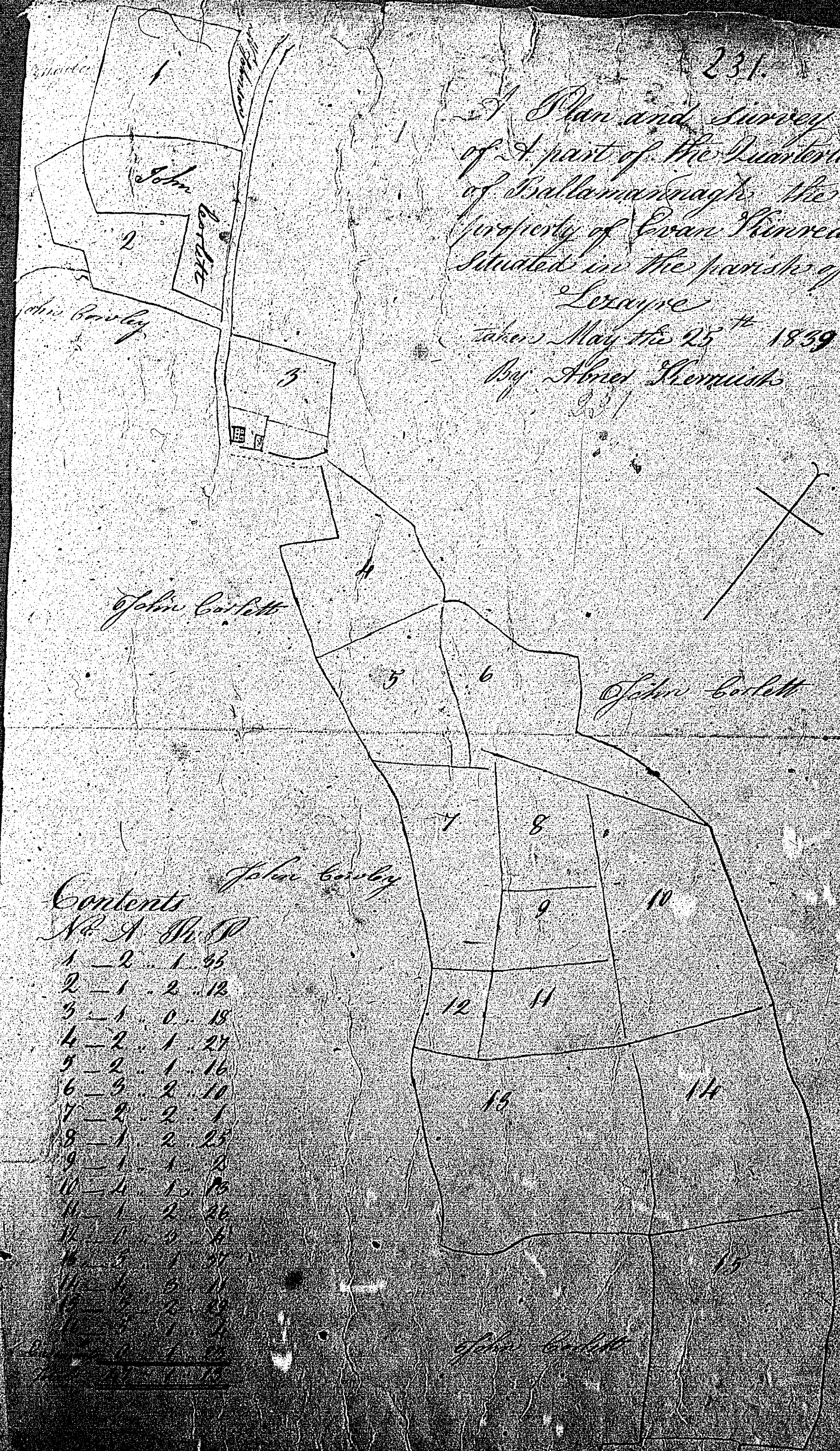


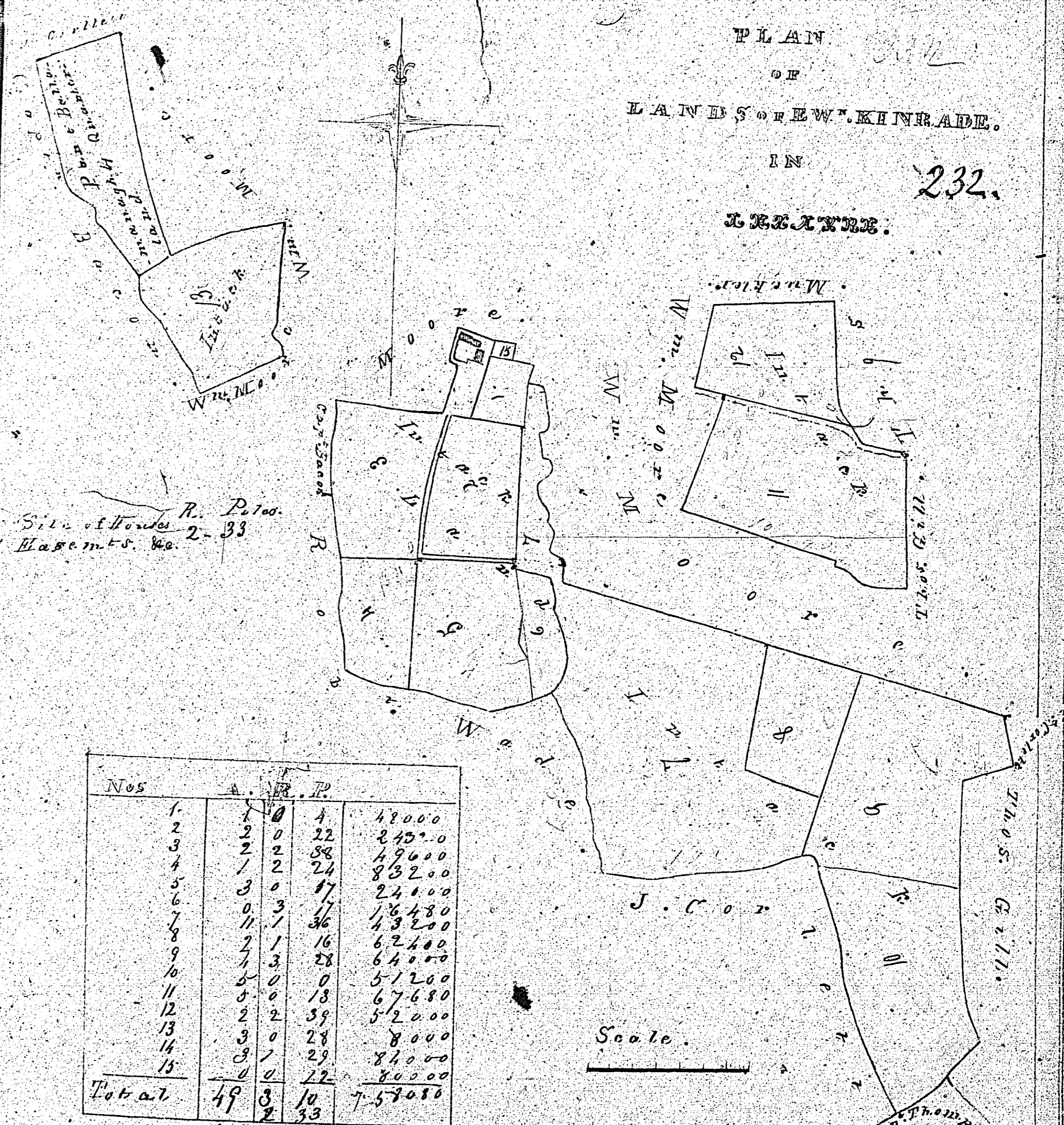
A Plan and Survey
of a part of the Quarterland
of Ballinacorney the
Property of Swan Kinnead
Situated in the parish of
Lerayre
taken May the 25th 1839
By James Hemmicks



Contents

No.	A.	B.	P.
1	2	1	45
2	1	2	12
3	1	0	18
4	2	1	24
5	2	1	16
6	3	2	10
7	2	2	1
8	1	2	25
9	1	1	2
10	4	1	15
11	1	2	26
12	1	3	4
13	3	1	27
14	1	3	11
15	2	2	23
16	1	1	1

PLAN
OF
LANDS OF NEW KINRAID.
IN
SCOTLAND.
232.



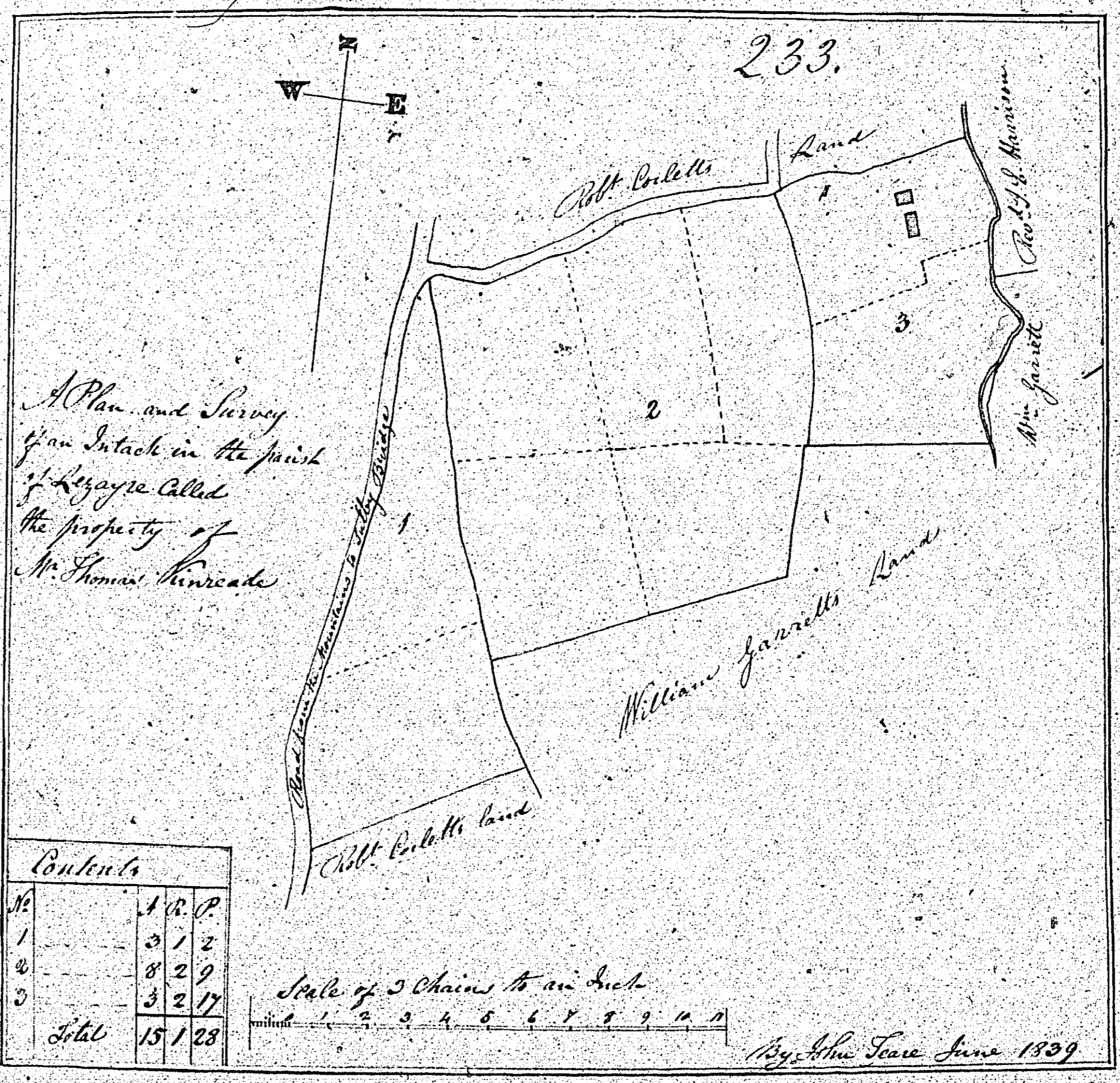
Site of the R. P. Co.
Blairm. Co. 2-33

Nos	A.	R.	P.	Value
1	0	0	4	48000
2	2	0	22	24500
3	0	2	38	49600
4	1	2	24	83200
5	0	0	17	24000
6	0	3	17	16480
7	1	1	36	43200
8	2	1	16	62400
9	1	3	28	64000
10	5	0	0	51200
11	5	0	13	67680
12	2	2	39	52000
13	3	0	28	8000
14	3	1	29	81000
15	0	0	22	80000
Total	49	3	10	757080

50 2 3
From a survey taken 27th May 1839 by Wm. R. and Co. L. & Co.

Noticed

233.



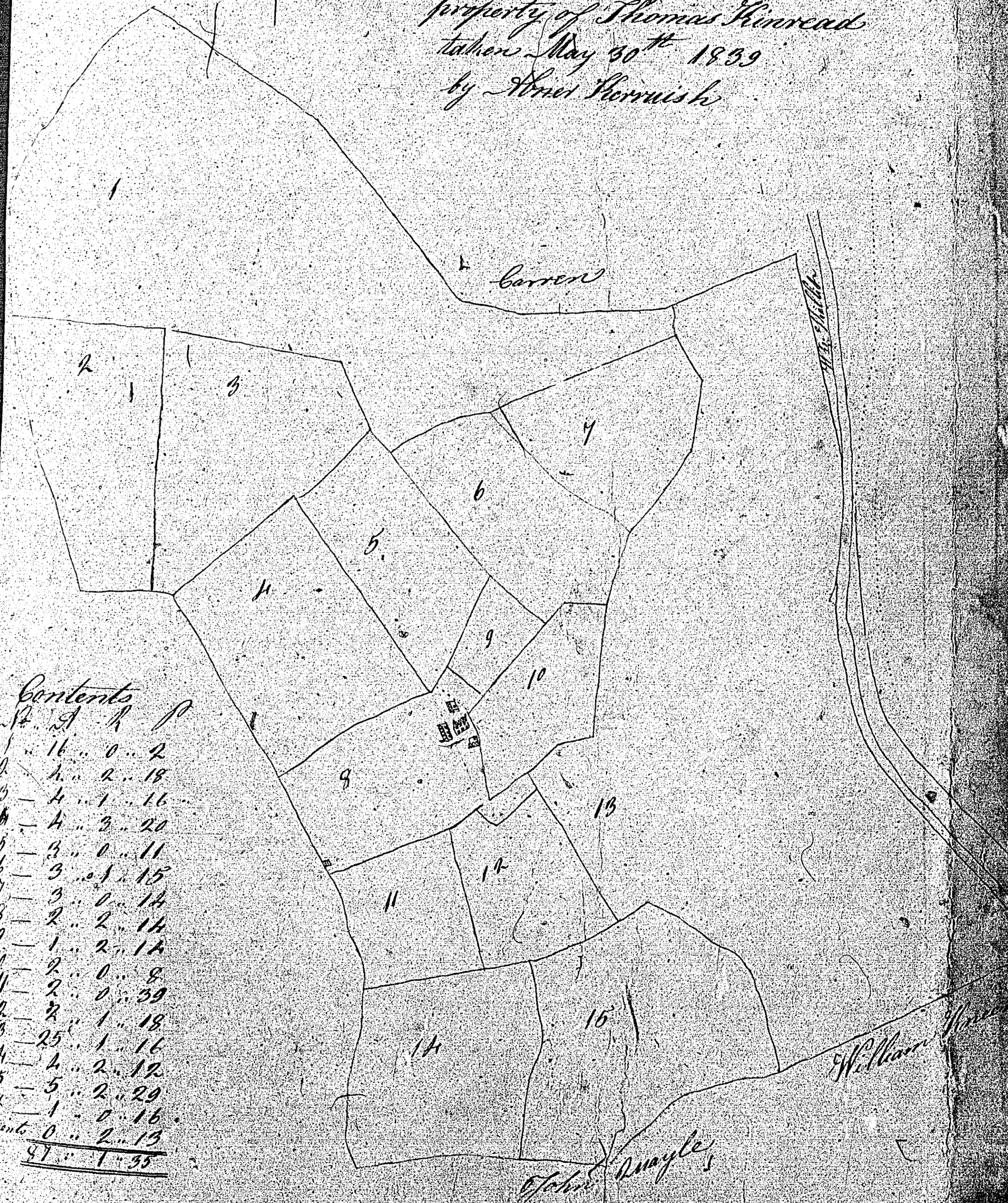
A Plan and Survey
of an Inchoate in the parish
of Lymington called
the property of
Mr. Thomas Kinnearde

Contents	
No.	A. R. P.
1	3 1 2
2	8 2 9
3	3 2 17
Total	15 1 28

Scale of 5 Chains to an Inch

By John Tove June 1839

235. A Plan and Survey of
 A parcel of Land called
 Willey-brook situated in the
 parish of Loxwre the
 property of Thomas Kinnead
 taken May 30th 1839
 by Abel Storrish



Contents

Lot	Acres	Roods	Pence
1	16	0	2
2	4	2	18
3	4	1	16
4	4	3	20
5	3	0	11
6	3	0	15
7	3	0	14
8	2	2	14
9	1	2	14
10	2	0	8
11	2	0	39
12	2	1	18
13	2	1	16
14	4	2	19
15	5	2	29
16	1	0	16
Sum	0	2	15
Total	87	1	35

A Scale of 3 Chains to an Inch

