

Ballacarragh in Irish  
belonging to Thos. Clarke Esq.  
Sub 1870



Total Contents	142	2	23
Proport of Public Roads	22	3	8
Proport of P. Road in No. 10	0	2	0
Do Water in No. 10	0	3	4

N.B. The quantity for No. 10 is exclusive of the water and Public Road.

W. Kelly  
Thos. Clarke Esq.





*W. H. ...*

*James*

*Hilbert*

*Engl.*

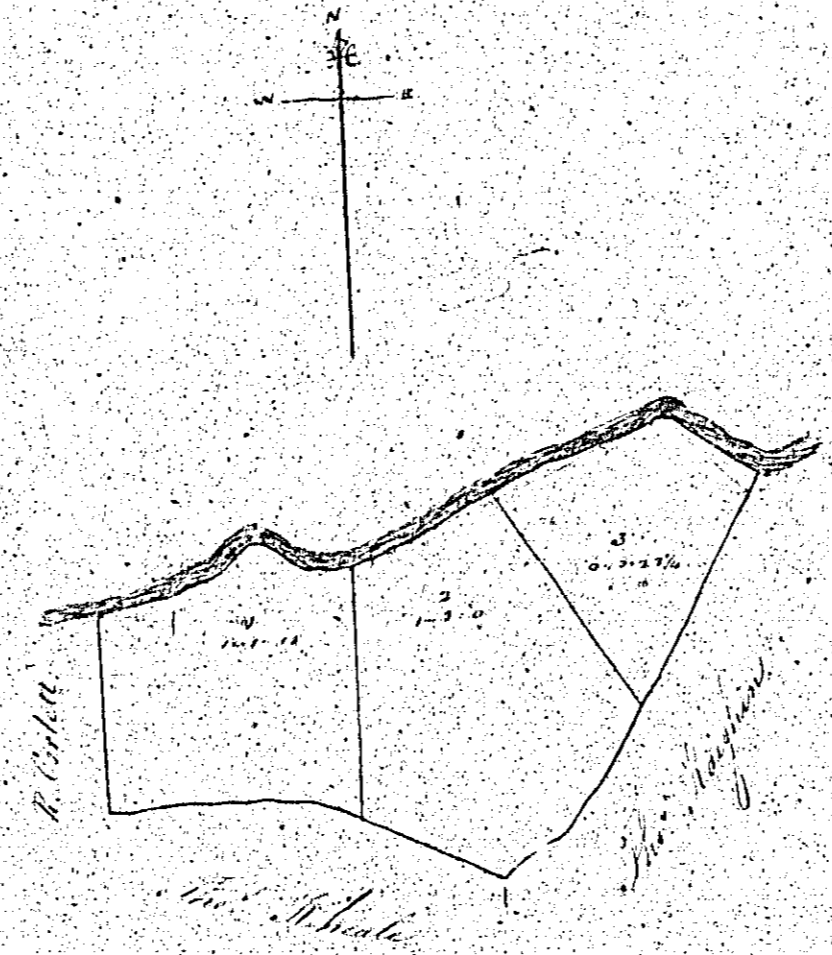
*Lima*

*17*

*10. 2. 15.*

*...*

*Part of  
Duchessman ...  
...  
...*



*CONTENTS*

<i>Nº</i>	<i>A.</i>	<i>R.</i>	<i>P.</i>
<i>1</i>	<i>1</i>	<i>1</i>	<i>17</i>
<i>2</i>	<i>1</i>	<i>3</i>	<i>0</i>
<i>3</i>	<i>0</i>	<i>0</i>	<i>20 1/2</i>
<i>Total</i>	<i>2</i>	<i>4</i>	<i>37 1/2</i>

*25*

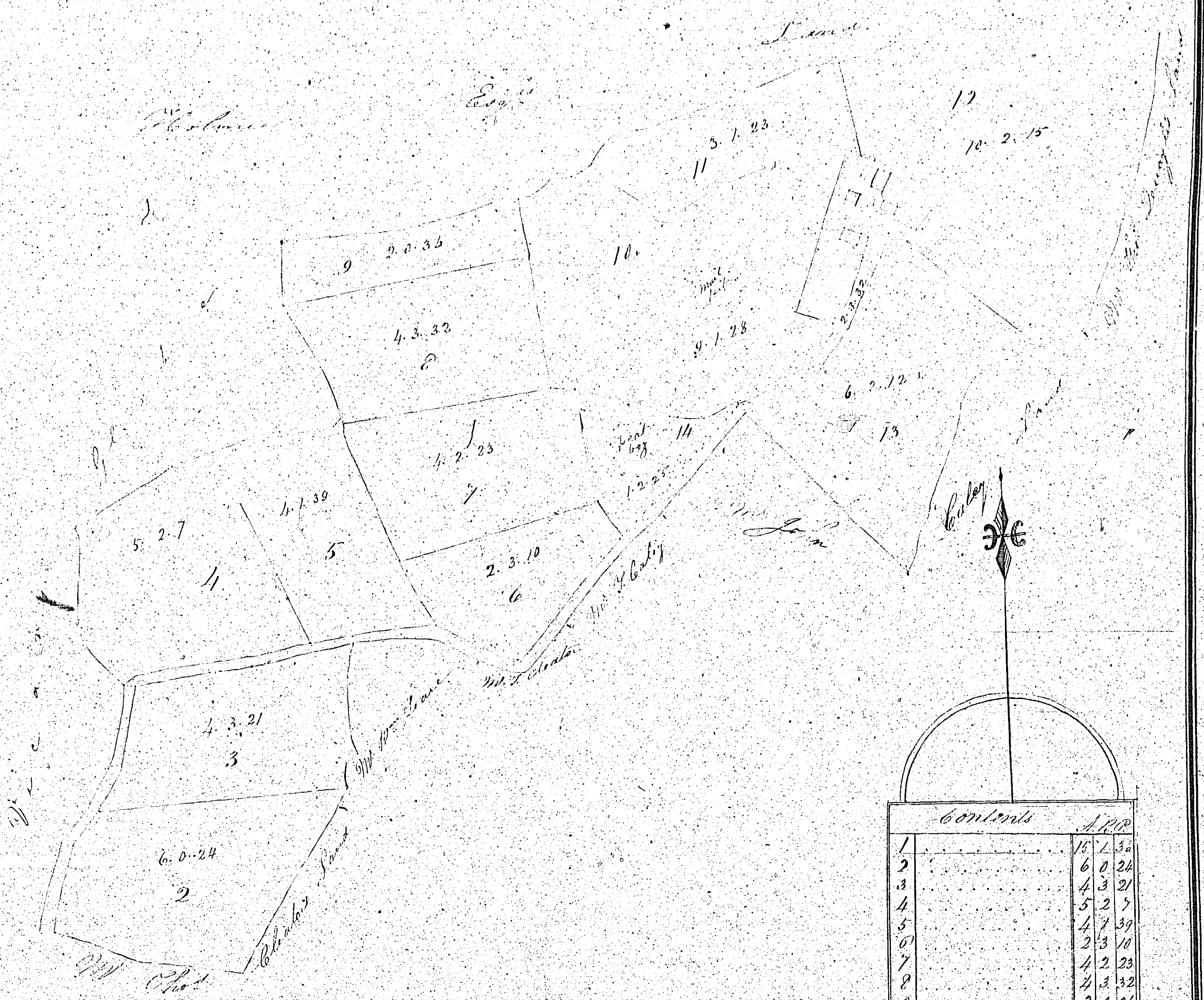
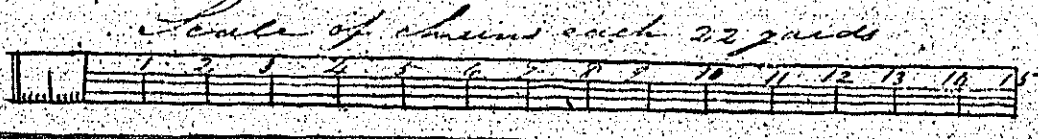
*...*

*...*

*Not me*

26.

Plan and Survey of  
 B. A. S. N. C. O. S. E. & F.  
 Situate in the parish of  
 J. W. R. P. N.  
 the property of  
 Mr. John Ballister  
 by Thomas Warren  
 Oct 1740



Contents	
No.	Acres
1	15 1/2 3/4
2	6 0 24
3	4 3 21
4	5 2 7
5	4 7 39
6	2 3 10
7	4 2 23
8	2 3 32
9	2 0 36
10	5 1 28
11	3 1 23
12	10 2 15
13	6 2 13
14	1 2 25
Roads, Gardens & Pasture	
Total 153 3 3	

*McL...*

*A Plan and survey of  
 A part of the Quarterland  
 and Outack of Balladunry  
 in the parishes of Jurby  
 and Andreas the property  
 of Thomas Callister  
 taken May 3<sup>rd</sup> 1839  
 by John Hennish*

*Contents*  
*No. of Plots*

1	1	2	11
2	1	3	31
3	2	0	28
4	2	2	26
5	2	3	51
6	3	1	34
7	3	1	14
8	4	1	18
9	3	1	6
10	3	1	14
11	1	0	13
12	1	0	12
13	1	1	31

