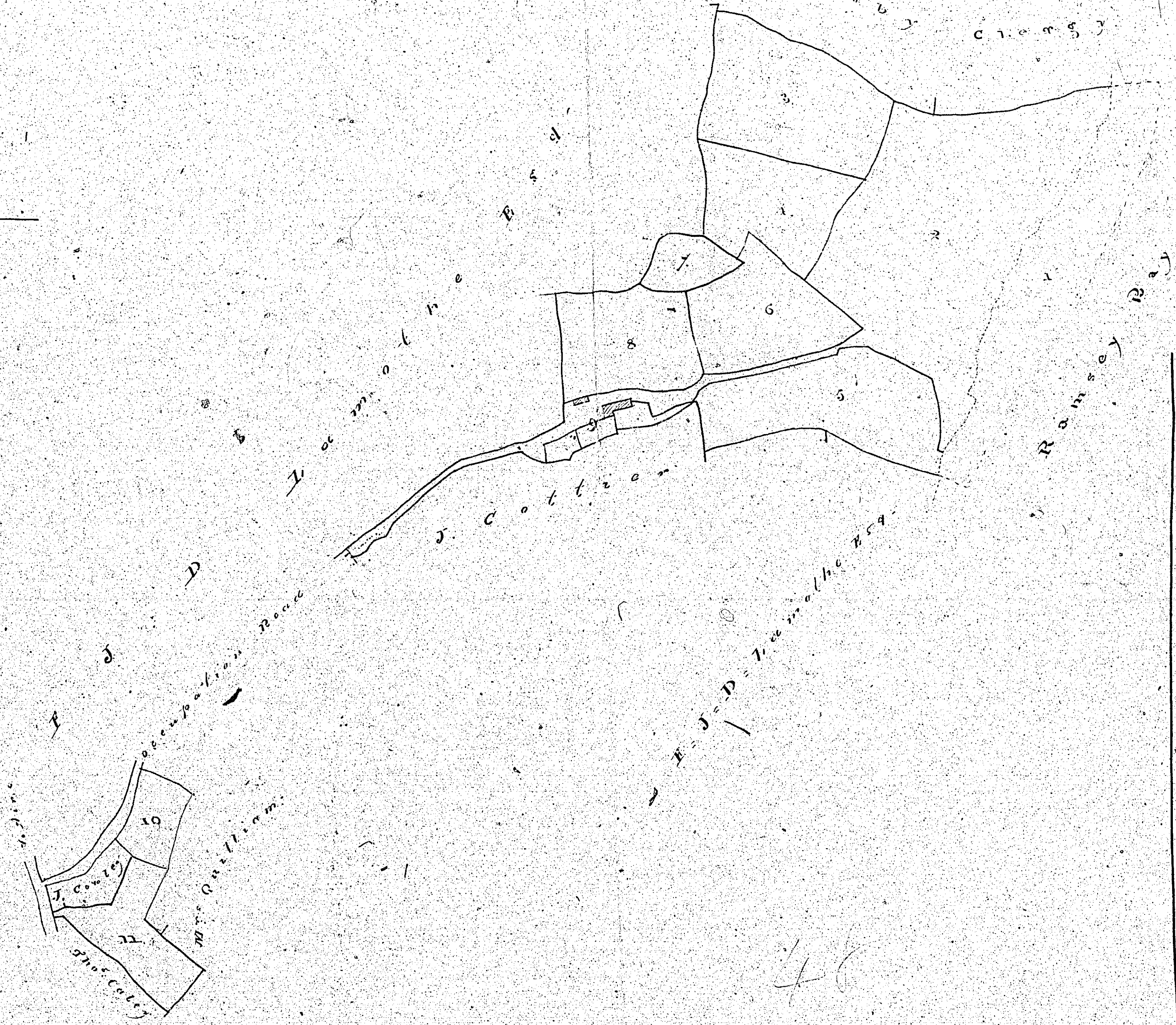
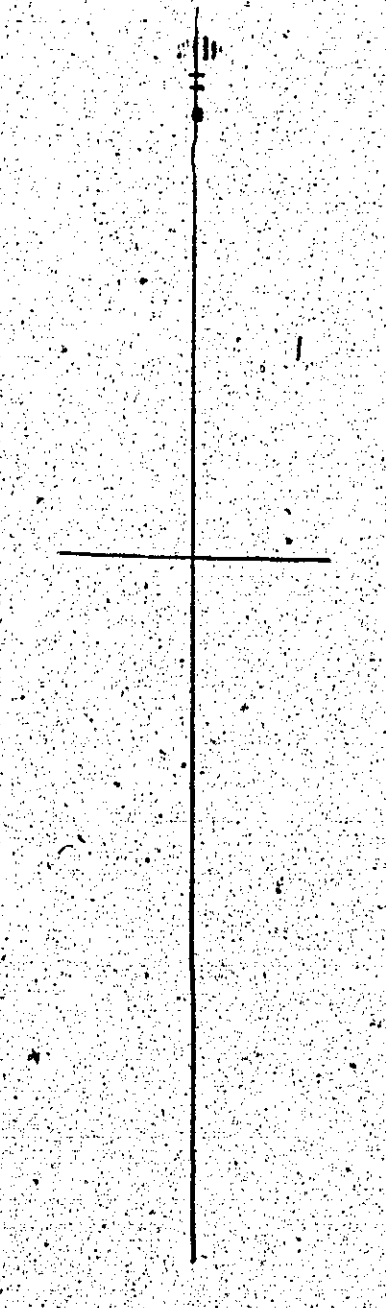


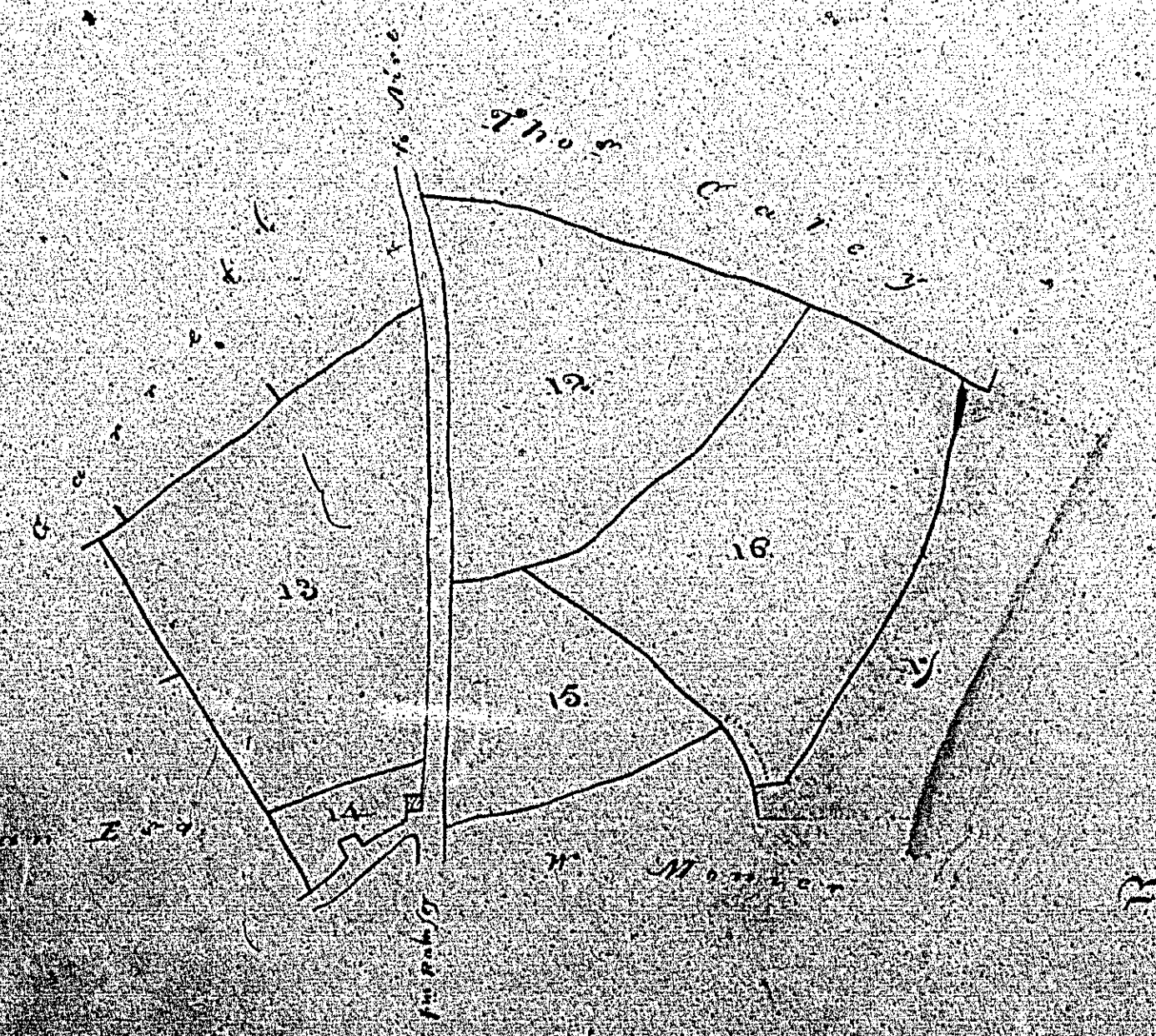
218



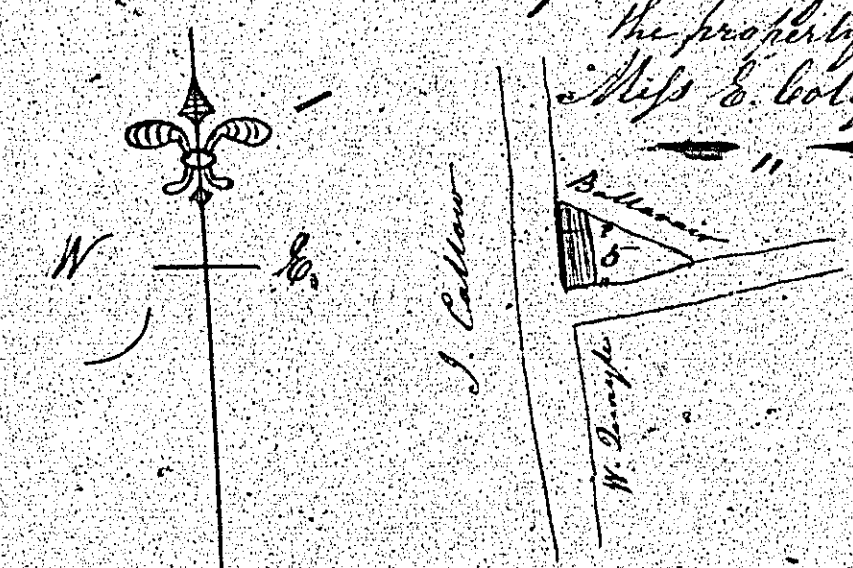
Contents

1	3	3	28
2	3	1	30
3	3	1	25
4	2	0	16
5	3	0	16
6	2	0	20
7	0	2	7
8	2	0	15
9	1	1	5
10	0	1	37
11	1	1	11
12	3	0	9
13	3	3	8
14	0	1	18
15	1	2	24
16	3	2	28
17	1	2	8
<b>Total</b>	<b>43</b>	<b>7</b>	<b>28</b>

Kiornlough  
in  
Bride  
along to  
W. Camashi  
Nov 1834



29.  
Plan of a parcel of Intact  
in the parish of Bride  
the property of  
Miss S. Colquhoun



Scale of 1.5 chains  
to One Inch

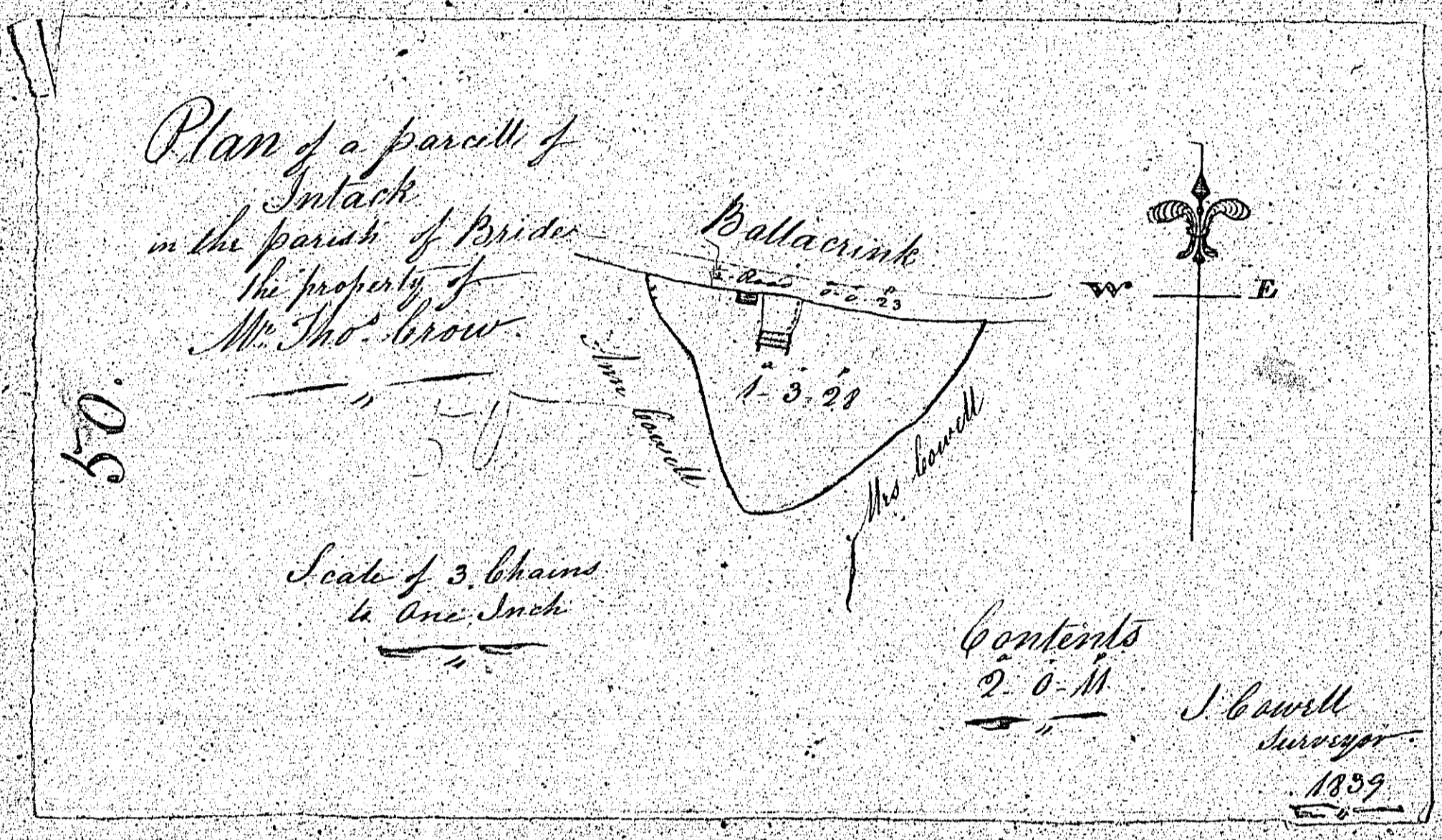
J. Howell  
Surveyor 1839

51.  
Kilnough  
in  
Bride  
belonging to  
Thos. Coley  
June 1839

J. Ramsey

Kiowillough  
in  
Bride  
belonging to  
Tho & Caley  
June 1839.

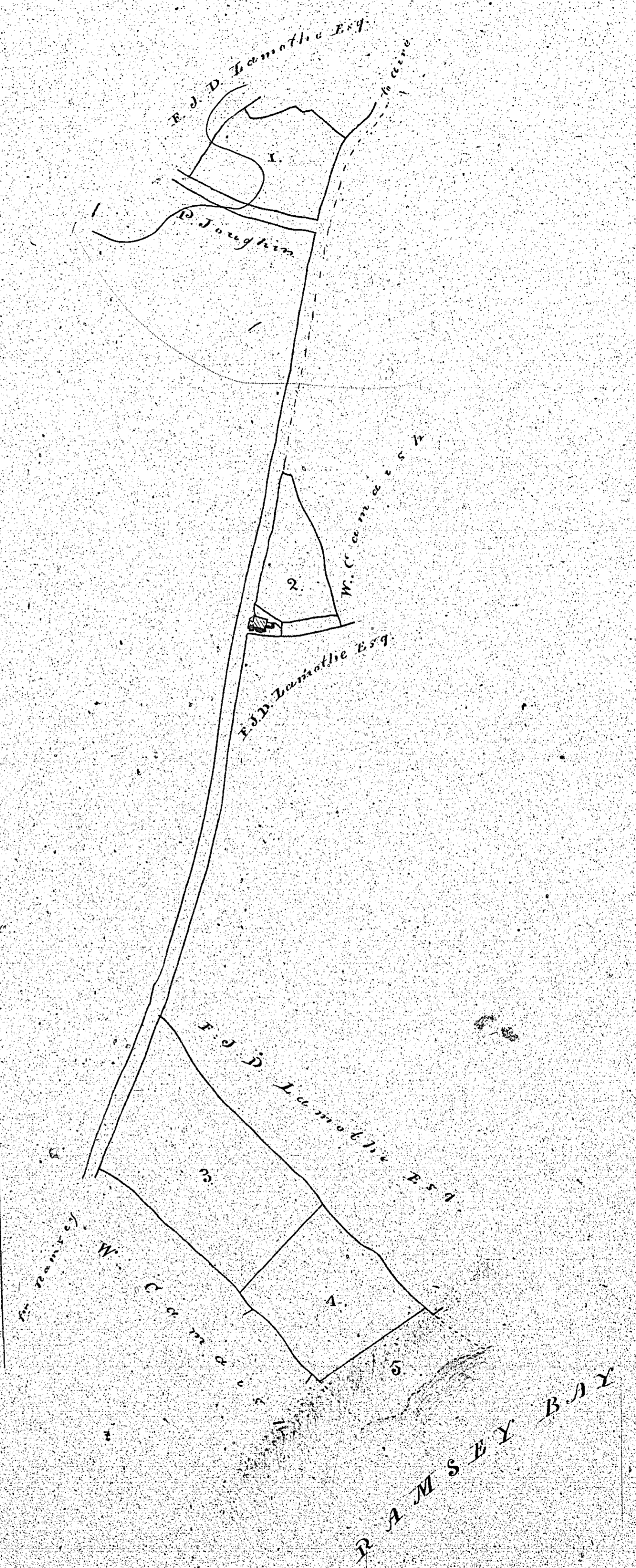
John J. Hanney



ISLE OF MAN GOVERNMENT: GENERAL REGISTRY  
 TITHE PLANS: PARISH OF BRIDE  
 Original monotone 1:30

Contents

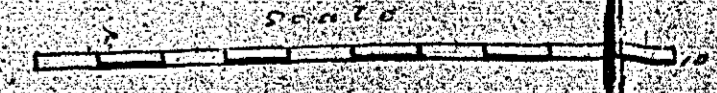
1 <sup>st</sup>	a 7 1/2
2	1 1/2 29
3	1 0 6
4	3 1 35
5	2 0 12
6	1 0 8
<b>A</b>	<b>9 0 10</b>

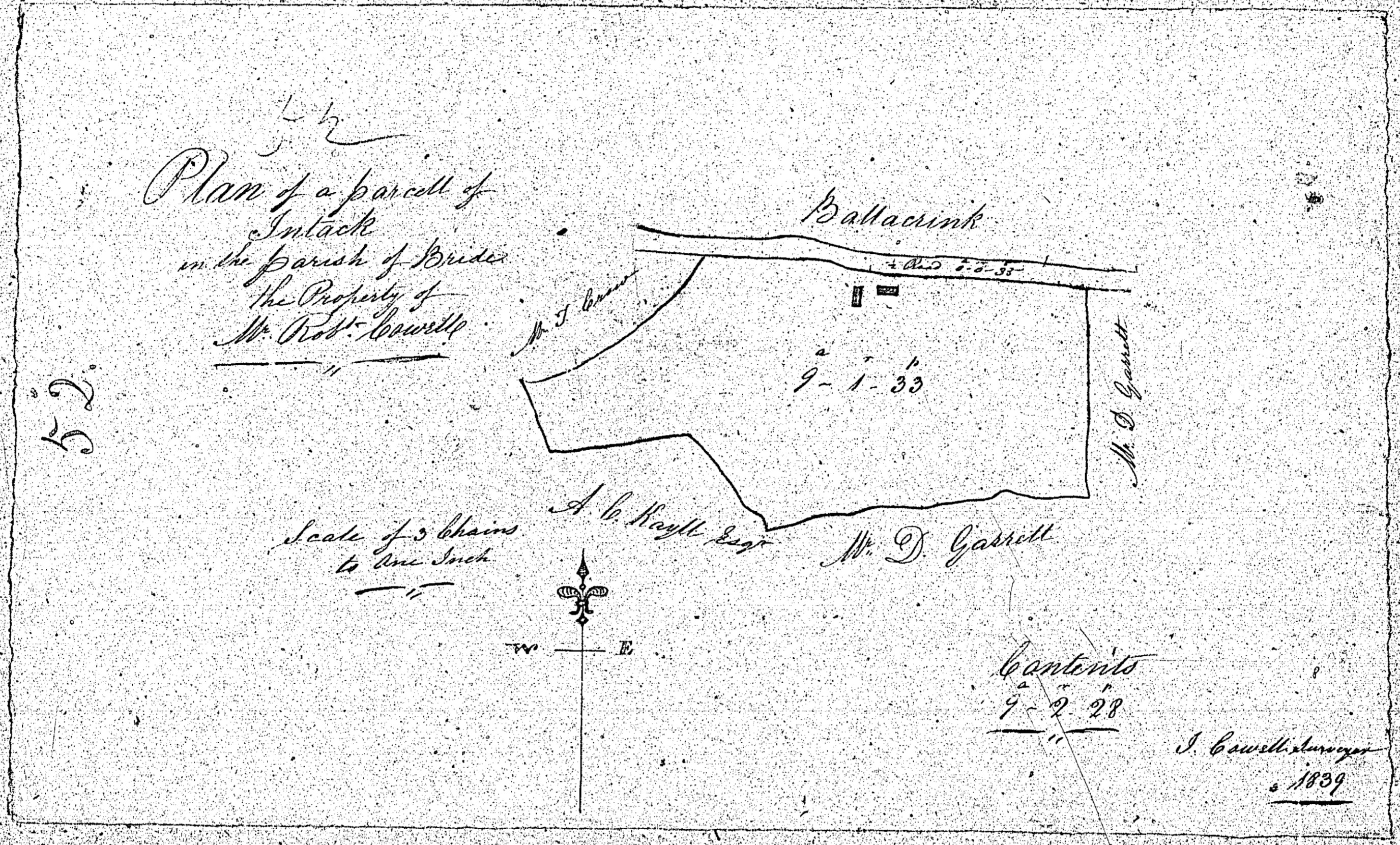


Riownlough  
in  
*Parish*  
belongs to  
*Thos Coley*  
June 1839

Proportion of Public Road 0.5.47

*Howell & Co Surveyors*  
Surveyed Ramsey





Registered Green in Bride  
 Registration of Public Roads - 0-1-16

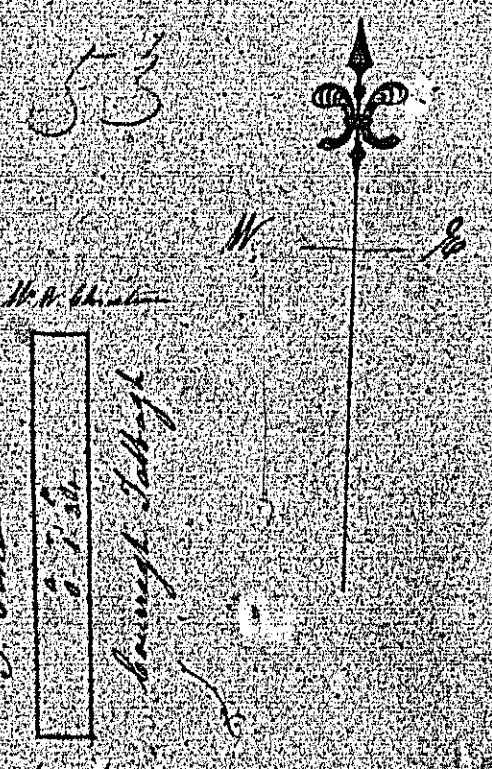
ISLE OF MAN GOVERNMENT: GENERAL REGISTRY  
 TITHE PLANS: PARISH OF BRIDE  
 Original monotone

1:30

1120

53.

Plan of a parcel of  
Land in the parish of  
St. Andrew  
in the parish of  
St. Andrew



Scale of 10 chains  
to one inch

J. Small  
1839

