

ISLE OF MAN GOVERNMENT: GENERAL REGISTRY

ASYLUM PLANS: PARISH OF RUSHEN

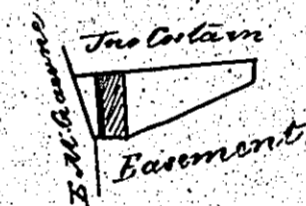
Original monotone

1:23

(370)

*Grant & Dhooney in Rushen
Belonging to Thomas Costain*

134



Contents 1-15

Scale 2 Chains to an Inch

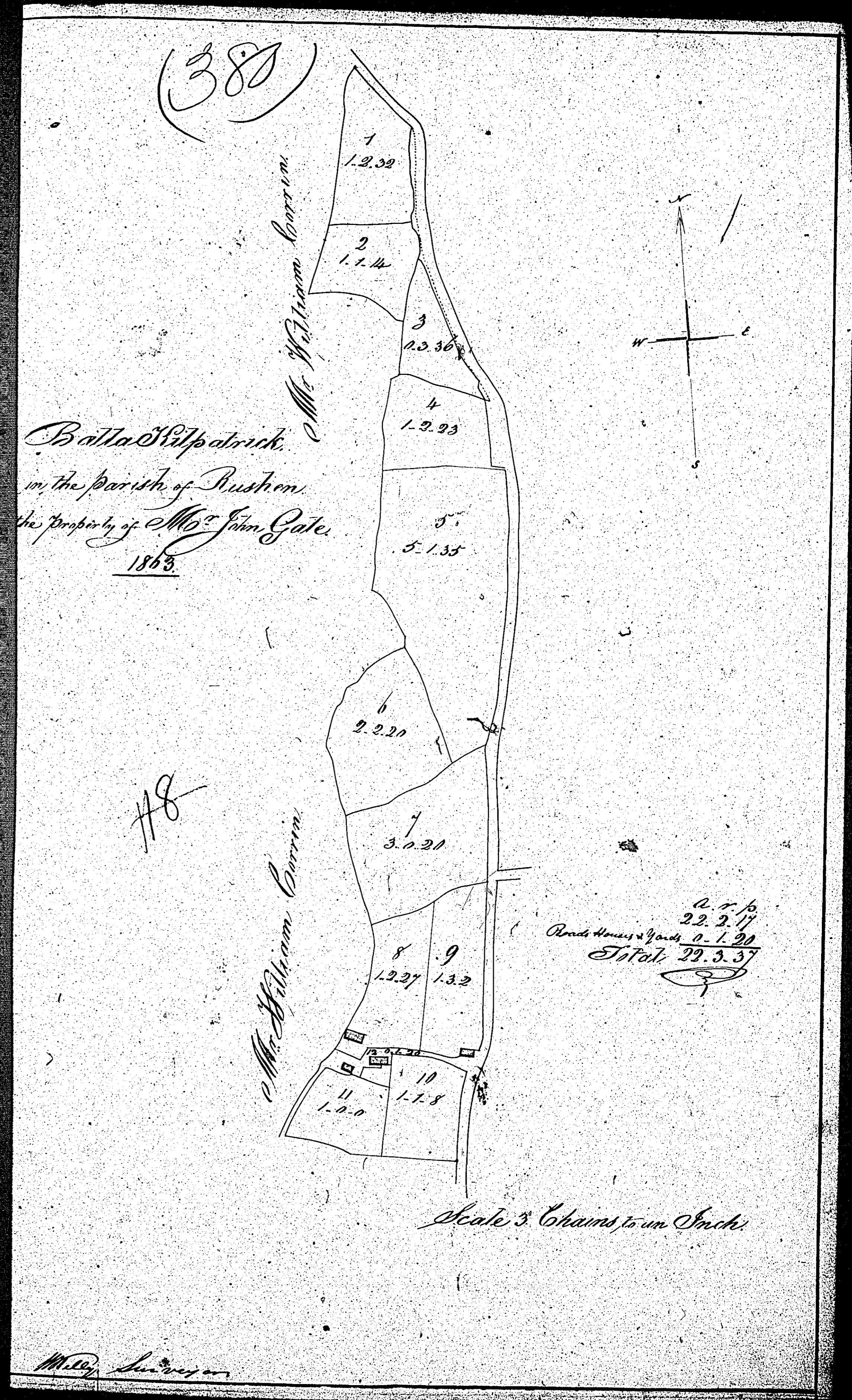
Woods Surveyor 1830

ISLE OF MAN GOVERNMENT: GENERAL REGISTRY

ASYLUM PLANS: PARISH OF RUSHEN

Original coloured (decorative)

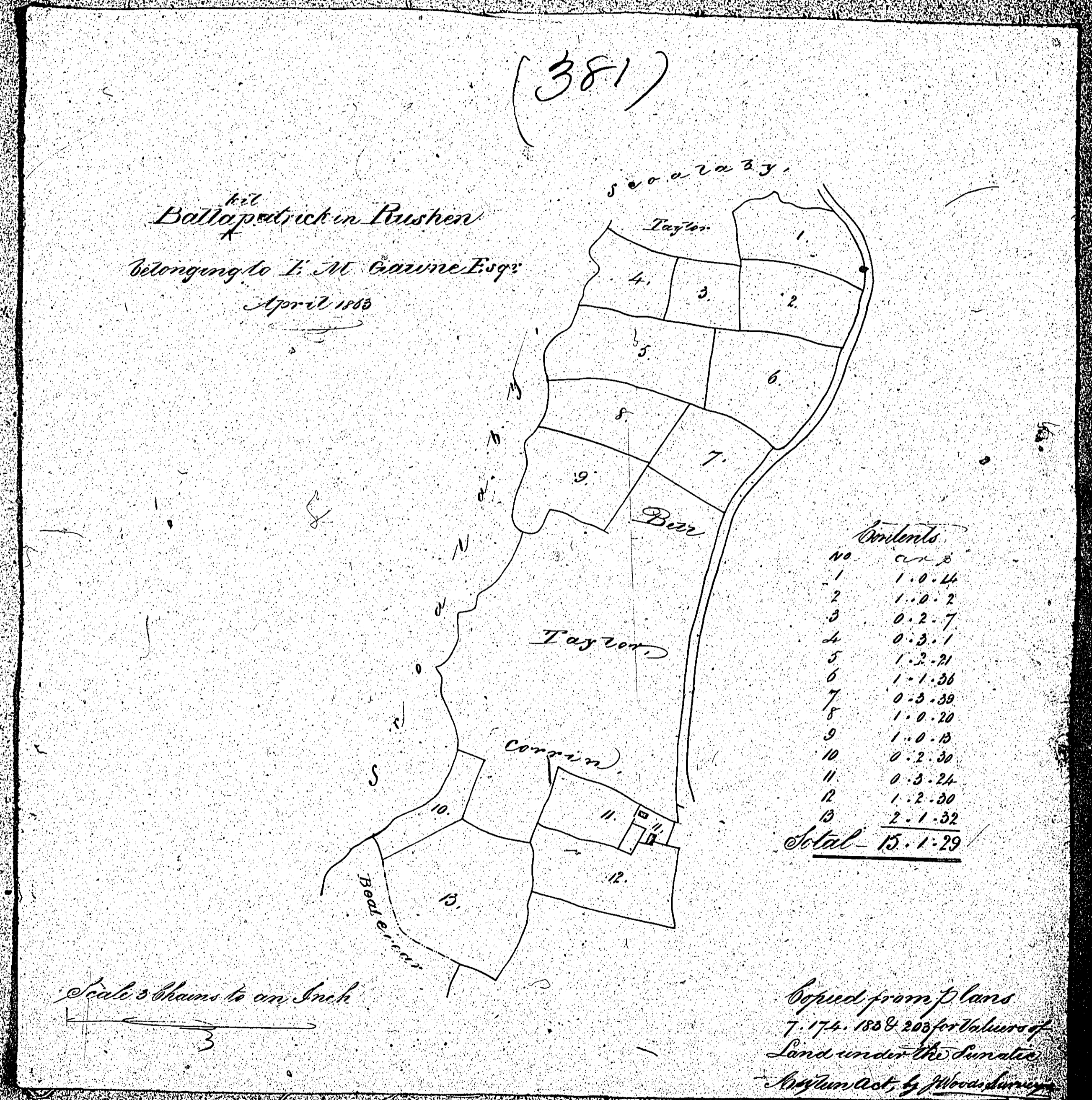
1:23



ISLE OF MAN GOVERNMENT: GENERAL REGISTRY
 ASYLUM PLANS: PARISH OF RUSHEN

Original monotone

1:23

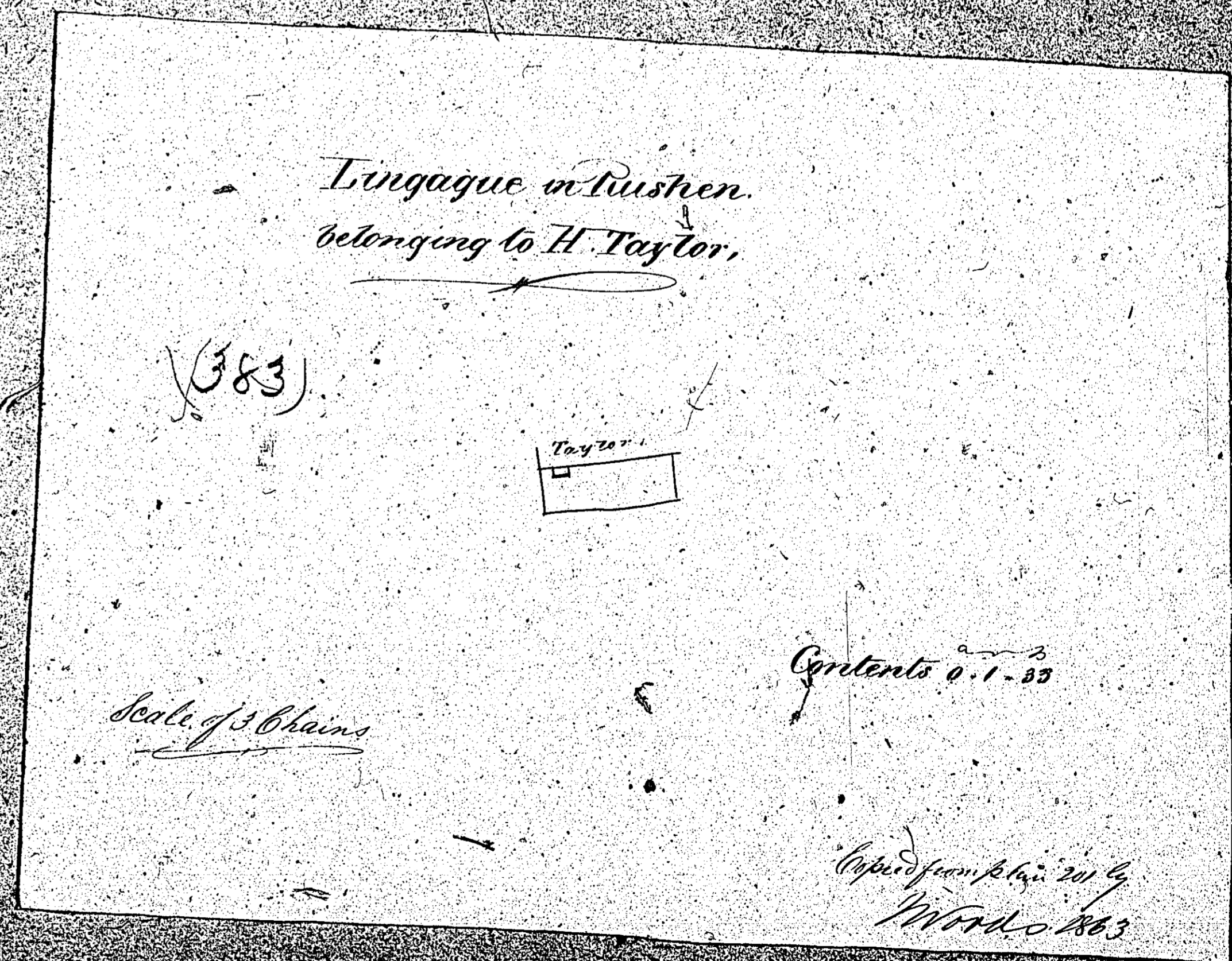
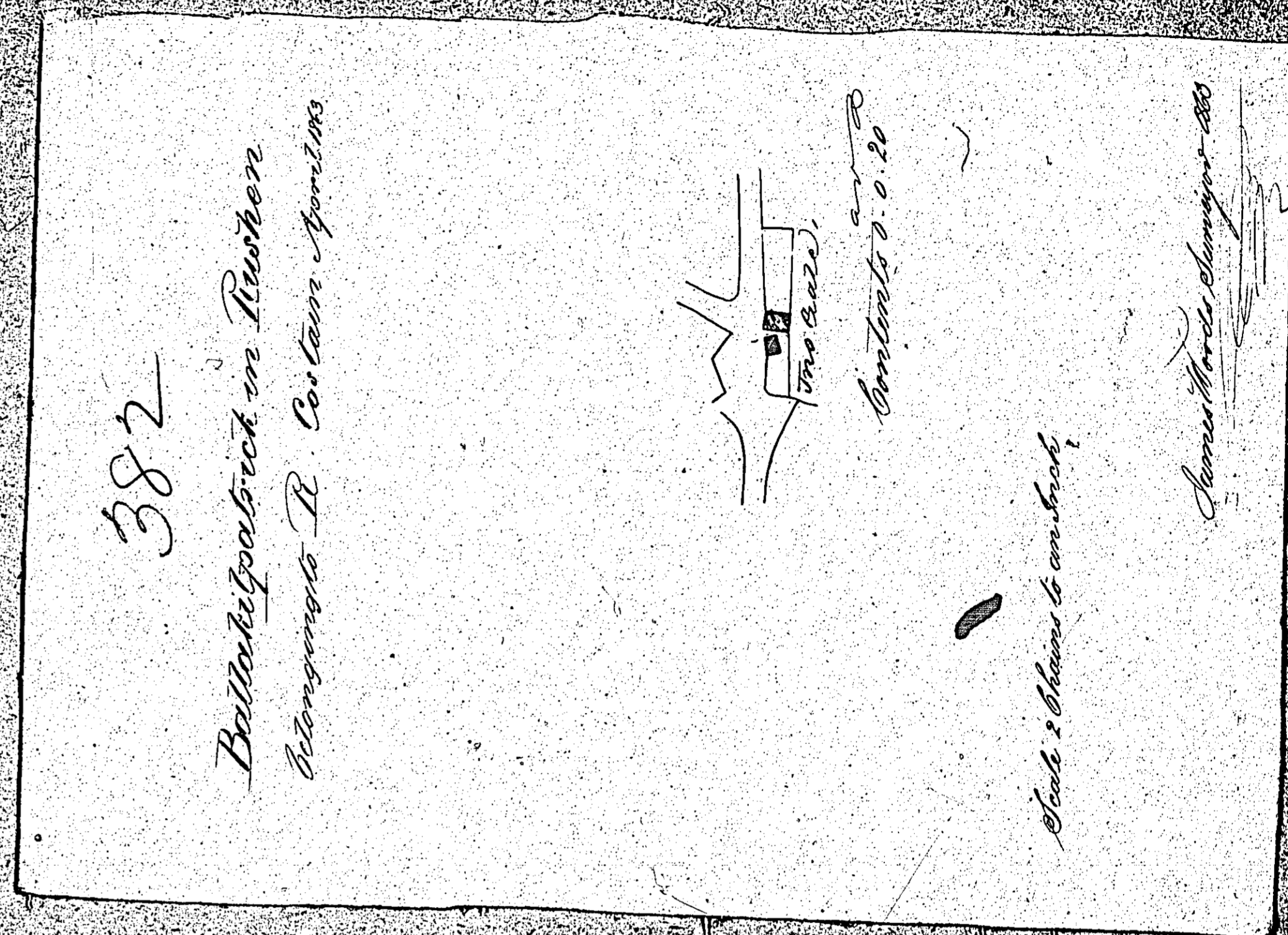


ISLE OF MAN GOVERNMENT: GENERAL REGISTRY

ASYLUM PLANS: PARISH OF RUSHEN

Originals monotone

1:23



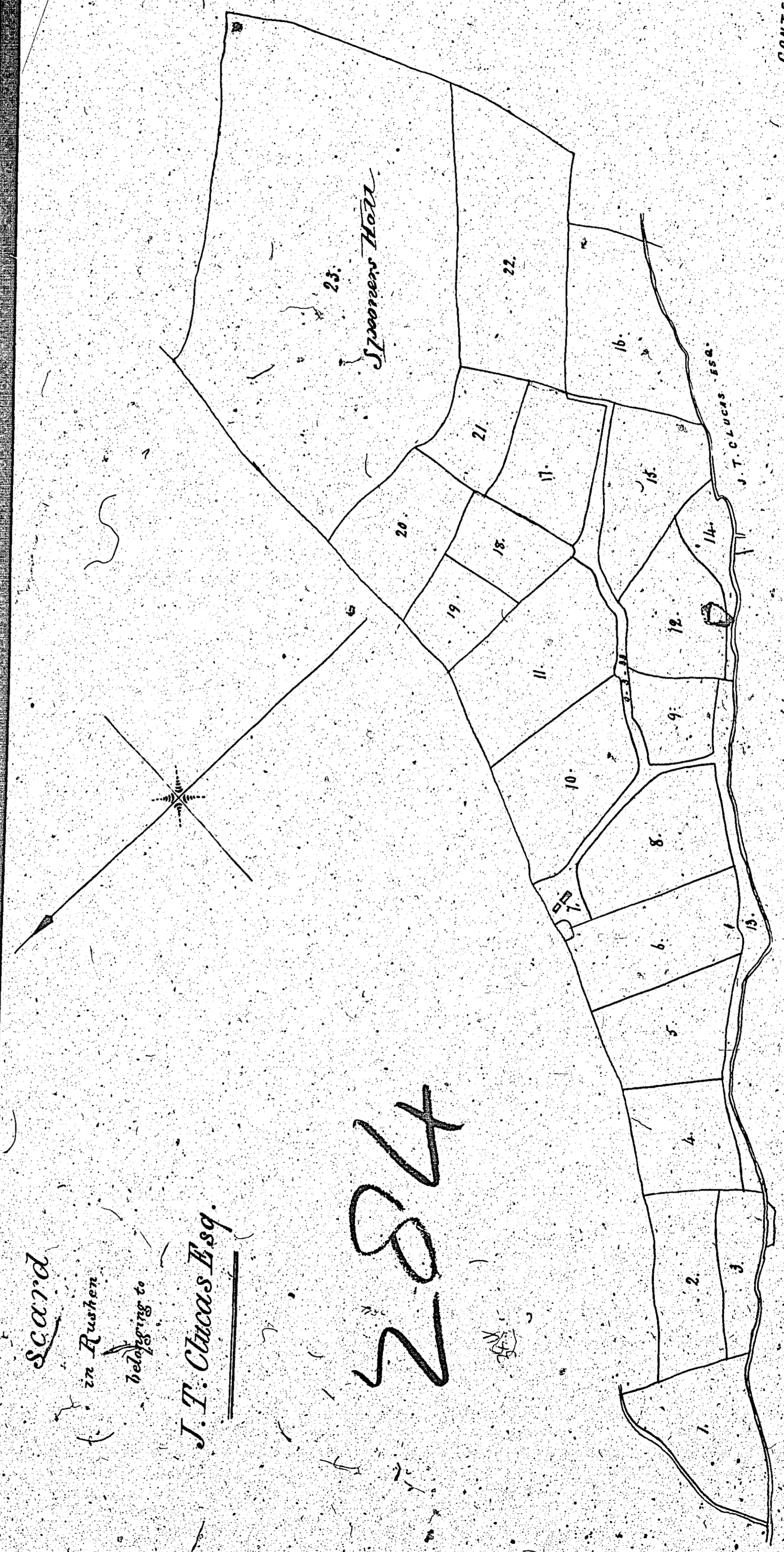
The following plan
 is numbered 284
 but 384 is
 pencilled on the back

ISLE OF MAN GOVERNMENT: GENERAL REGISTRY

ASYLUM PLANS: PARISH OF RUSHEN

Original monotone

1:23



scard
 in Rushen
 belonging to
J. T. Clucas Esq.

284

284
 (Scale)

A Claim to an Inch

Copied from plan No. 23, by J. T. Clucas, 1863.

CONTENTS

1	1	1.1.1
2	1	1.1.2
3	2	1.1.3
4	2	1.1.4
5	2	1.1.5
6	3	1.1.6
7	3	1.1.7
8	3	1.1.8
9	3	1.1.9
10	3	1.1.10
11	3	1.1.11
12	3	1.1.12
13	3	1.1.13
14	3	1.1.14
15	3	1.1.15
16	3	1.1.16
17	3	1.1.17
18	3	1.1.18
19	3	1.1.19
20	3	1.1.20
21	3	1.1.21
22	3	1.1.22
23	3	1.1.23
24	3	1.1.24
25	3	1.1.25
26	3	1.1.26
27	3	1.1.27
28	3	1.1.28
29	3	1.1.29
30	3	1.1.30
31	3	1.1.31
32	3	1.1.32
33	3	1.1.33
34	3	1.1.34
35	3	1.1.35
36	3	1.1.36
37	3	1.1.37
38	3	1.1.38
39	3	1.1.39
40	3	1.1.40
41	3	1.1.41
42	3	1.1.42
43	3	1.1.43
44	3	1.1.44
45	3	1.1.45
46	3	1.1.46
47	3	1.1.47
48	3	1.1.48
49	3	1.1.49
50	3	1.1.50
51	3	1.1.51
52	3	1.1.52
53	3	1.1.53
54	3	1.1.54
55	3	1.1.55
56	3	1.1.56
57	3	1.1.57
58	3	1.1.58
59	3	1.1.59
60	3	1.1.60
61	3	1.1.61
62	3	1.1.62
63	3	1.1.63
64	3	1.1.64
65	3	1.1.65
66	3	1.1.66
67	3	1.1.67
68	3	1.1.68
69	3	1.1.69
70	3	1.1.70
71	3	1.1.71
72	3	1.1.72
73	3	1.1.73
74	3	1.1.74
75	3	1.1.75
76	3	1.1.76
77	3	1.1.77
78	3	1.1.78
79	3	1.1.79
80	3	1.1.80
81	3	1.1.81
82	3	1.1.82
83	3	1.1.83
84	3	1.1.84
85	3	1.1.85
86	3	1.1.86
87	3	1.1.87
88	3	1.1.88
89	3	1.1.89
90	3	1.1.90
91	3	1.1.91
92	3	1.1.92
93	3	1.1.93
94	3	1.1.94
95	3	1.1.95
96	3	1.1.96
97	3	1.1.97
98	3	1.1.98
99	3	1.1.99
100	3	1.1.100

Total 100.00
 100.00