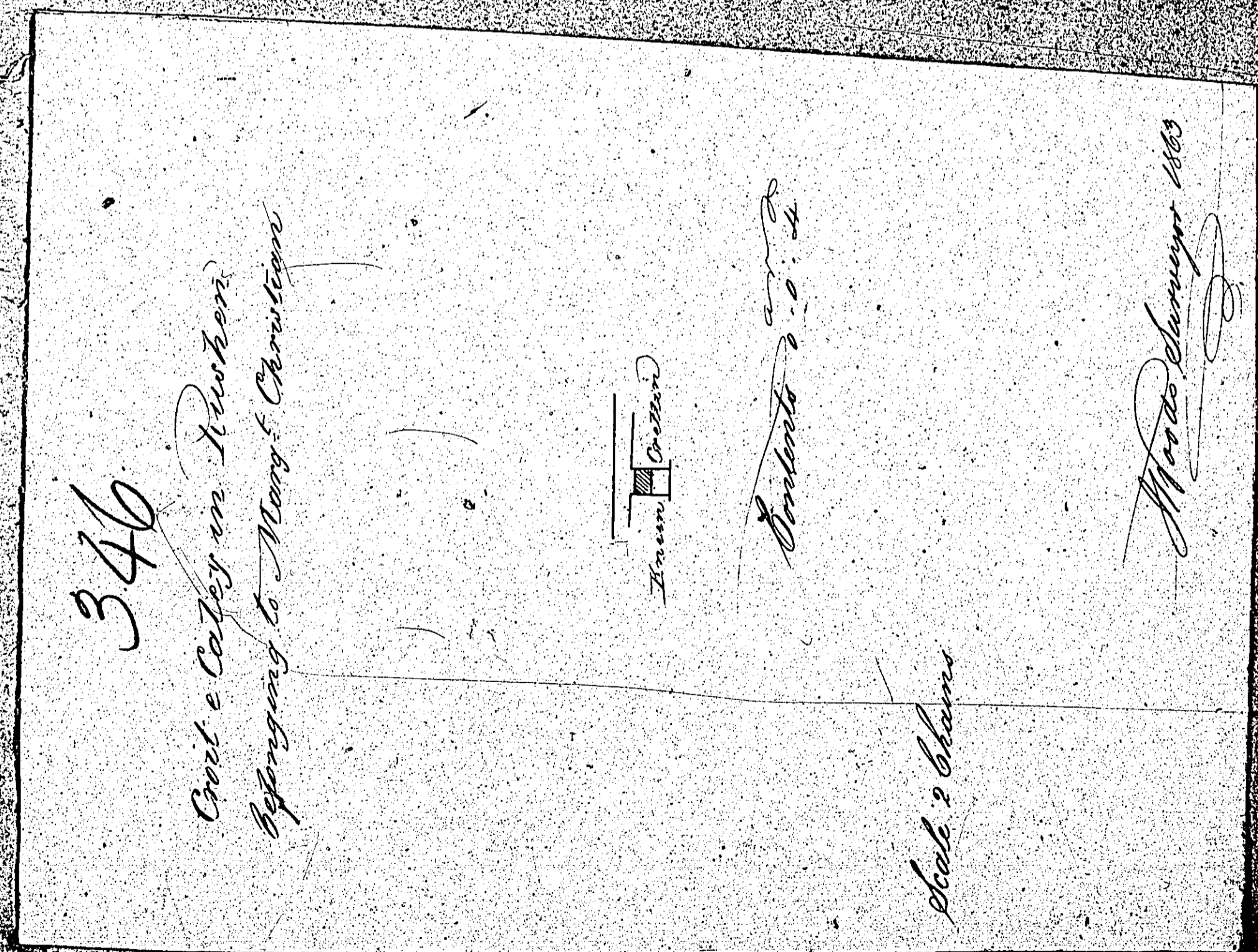
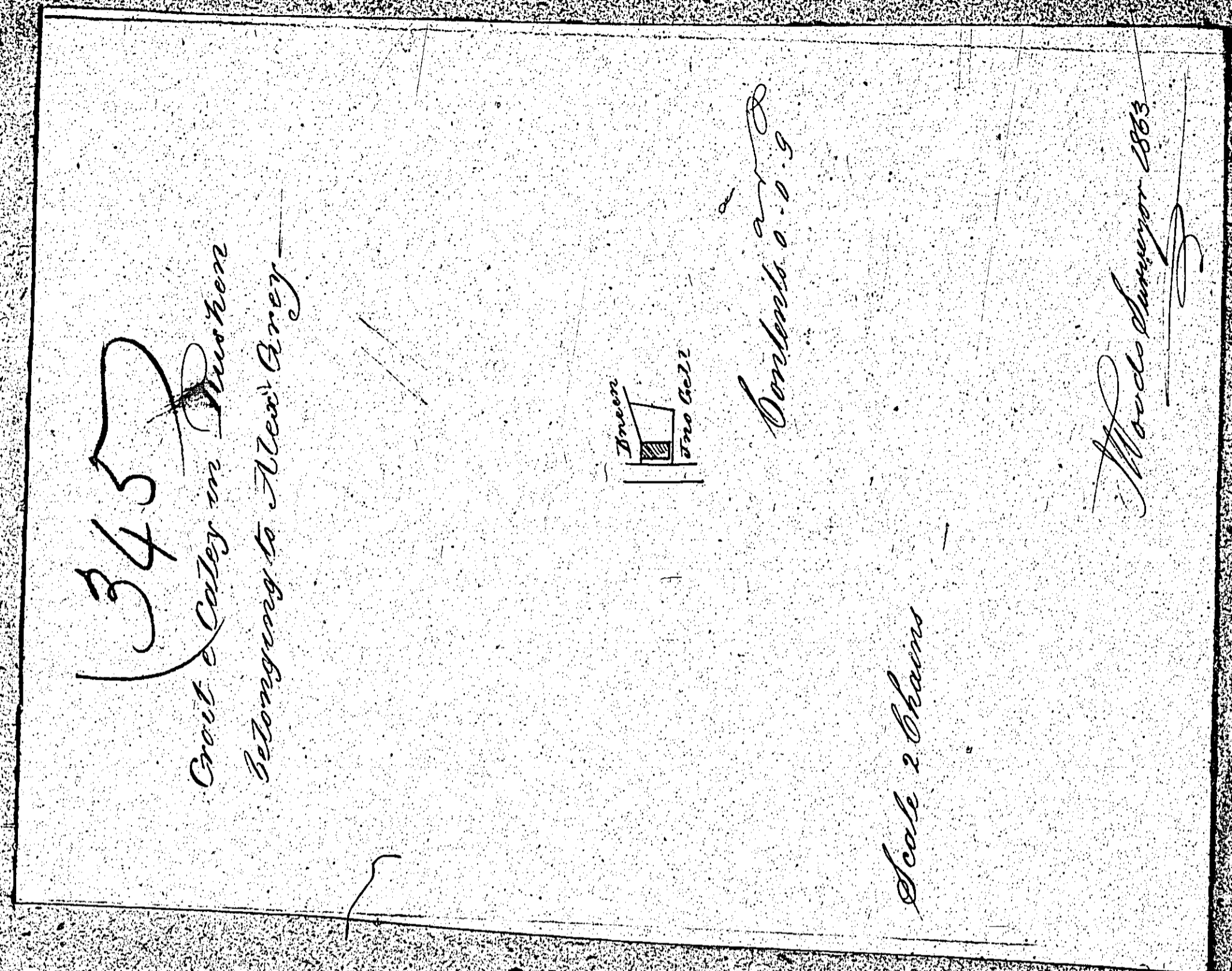


ISLE OF MAN GOVERNMENT: GENERAL REGISTRY

ASYLUM PLANS: PARISH OF RUSHEN

Originals monotone

1:23



ISLE OF MAN GOVERNMENT: GENERAL REGISTRY

ASYLUM PLANS: PARISH OF RUSHEN

Originals monotone

1:23

(347)

Croft & Caley in Rushen  
Belonging to Mary & Criffin

Consolidated

Contracts 0.0.92

Local & Shams

Marks Surveyor 1863

348

Croft & Caley in Rushen  
Belonging to Mr. Criffin

Consolidated

Contracts 0.0.92

Local & Shams to an Inch

Marks Surveyor 1863

ISLE OF MAN GOVERNMENT: GENERAL REGISTRY

ASYLUM PLANS: PARISH OF RUSHEN

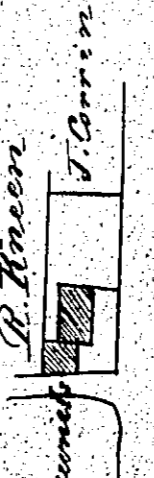
Originals monotone

1:23

(349)

Govt. Asylum in Rushen  
Belonging to His Excellency R.

P. Kinross  
T. McCann  
J. Carrin



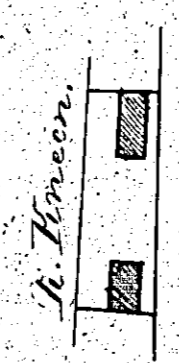
Contents 2. 22

Scale of 3/16 inch to an Inch

Copy furnished by  
J. W. Deane 1863

(350)

Govt. Asylum in Rushen  
Belonging to His Excellency



Contents 2. 25

Scale of 3/16 inch to an Inch

Copy furnished by  
J. W. Deane 1863

ISLE OF MAN GOVERNMENT: GENERAL REGISTRY

ASYLUM PLANS: PARISH OF RUSHEN

Originals monotone

1:23

331

*Orriastal in Rushen*  
*belonging to Jno Woodcock.*



*Contents 1.1.25*

*Scale 3 chains to an Inch*

*Copied from plan by*  
*Woods Surveyor 1863*

332

*Orriastal in Rushen*  
*belonging to Tho. Deedon*



*Contents 3.3.36*

*Scale 3 chains to an Inch*

*Copied from plan by*  
*Woods Surveyor 1863*

ISLE OF MAN GOVERNMENT: GENERAL REGISTRY

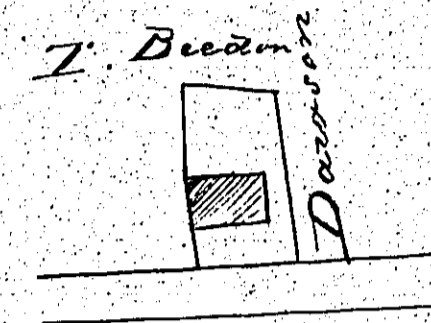
ASYLUM PLANS: PARISH OF RUSHEN

Originals monotone

1:23

(353)

*Orrestat in Rushen  
belonging to W<sup>m</sup> Bell*



*Contents 0-0-25*

*Scale 2 Chains to an Inch*

*Wood Survey 1863*

354

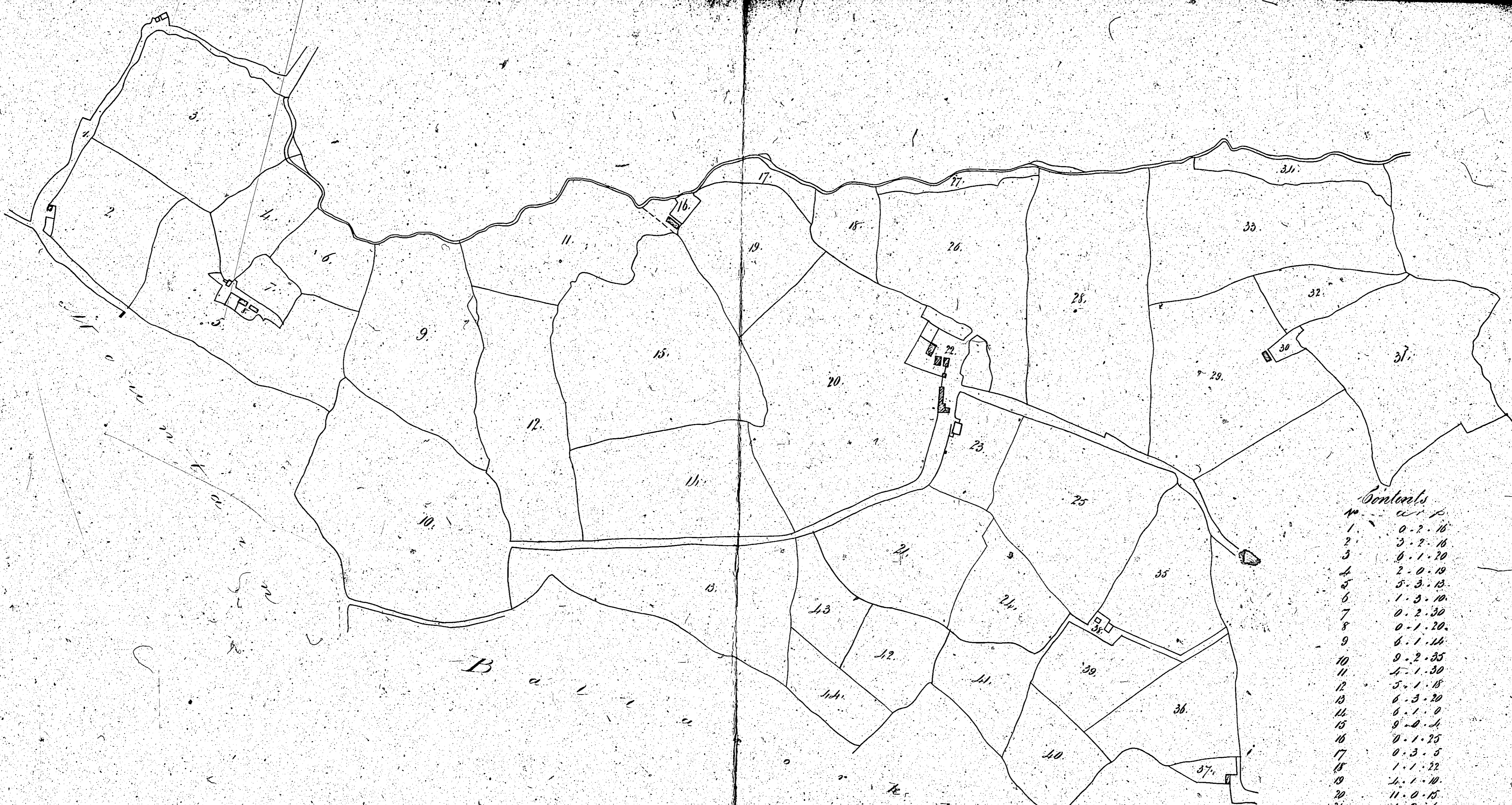
*Orrestat in Rushen  
belonging to M. Dawson Esq.*



*Scale 3 Chains*

*Contents 0-1-20*

*Wood Survey 1863*



*Scodaby in Rushen*  
*belonging to E. M. Gawne Esq<sup>r</sup>*  
*April 1868*

355

Scale - 3 chains = 1000 Irish

Plot No.	Contents
1	0.2.16
2	3.2.16
3	6.1.20
4	2.0.19
5	5.3.13
6	1.3.10
7	0.2.30
8	0.1.20
9	6.1.14
10	9.2.35
11	4.1.30
12	5.1.18
13	6.3.20
14	6.1.0
15	9.0.4
16	0.1.25
17	0.3.5
18	1.1.22
19	4.1.10
20	11.0.15
21	4.2.6
22	2.3.0
23	1.2.20
24	2.2.5
25	6.0.8
26	6.0.20
27	0.2.16
28	8.3.0
29	6.2.10
30	0.0.35
31	6.2.32
32	1.1.24
33	7.1.30
34	1.1.16
35	5.2.22
36	3.1.7
37	0.1.6
38	0.1.26
39	2.1.17
40	4.0.20
41	2.0.30
42	2.0.16
43	1.3.22
44	1.2.3
<hr/>	
Total	165.5.19

ISLE OF MAN GOVERNMENT: GENERAL REGISTRY

ASYLUM PLANS: PARISH OF RUSHEN

Original monotone

1:23

*From Plans & Survey by  
 W. Woods Surveyor 1868*