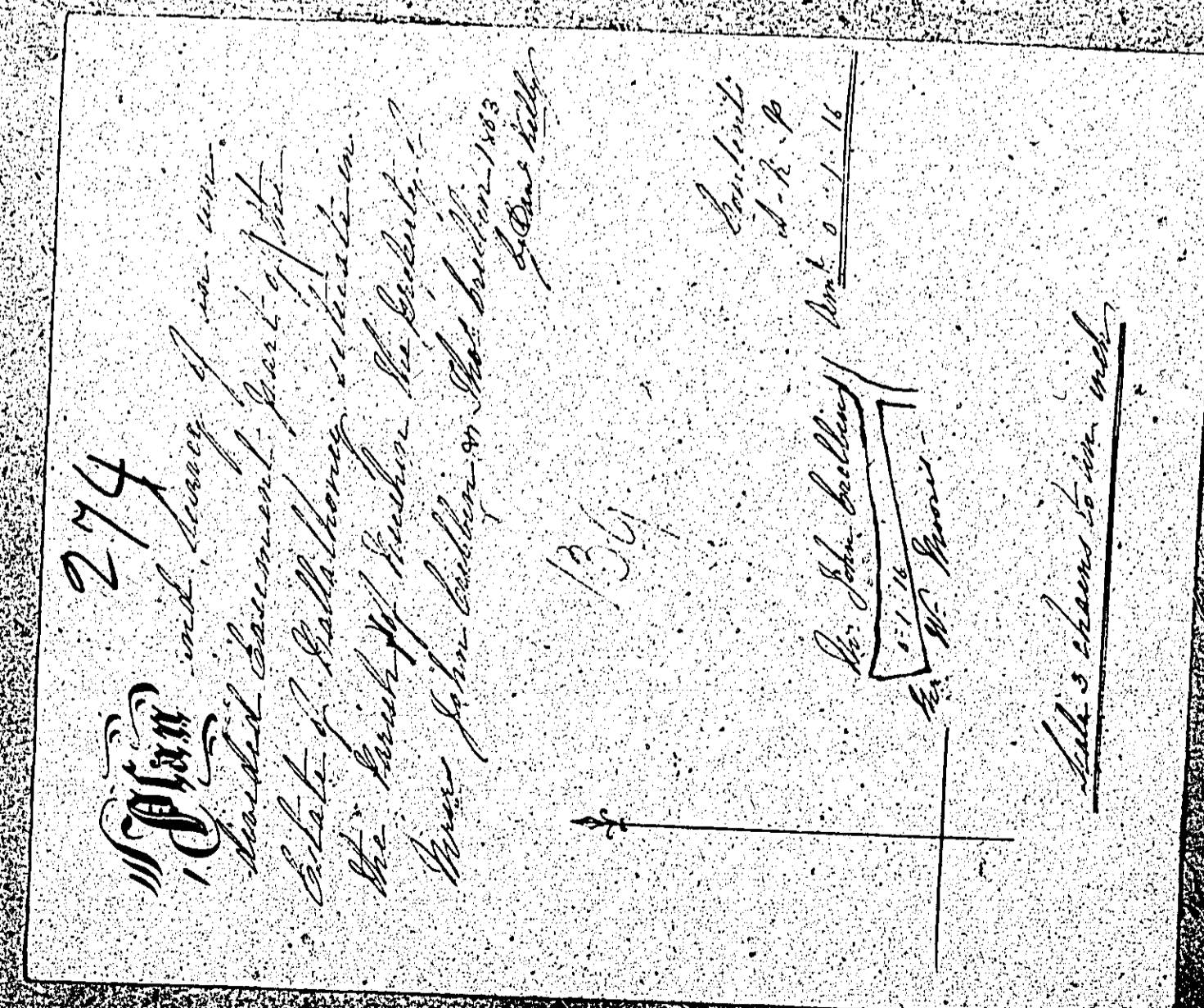
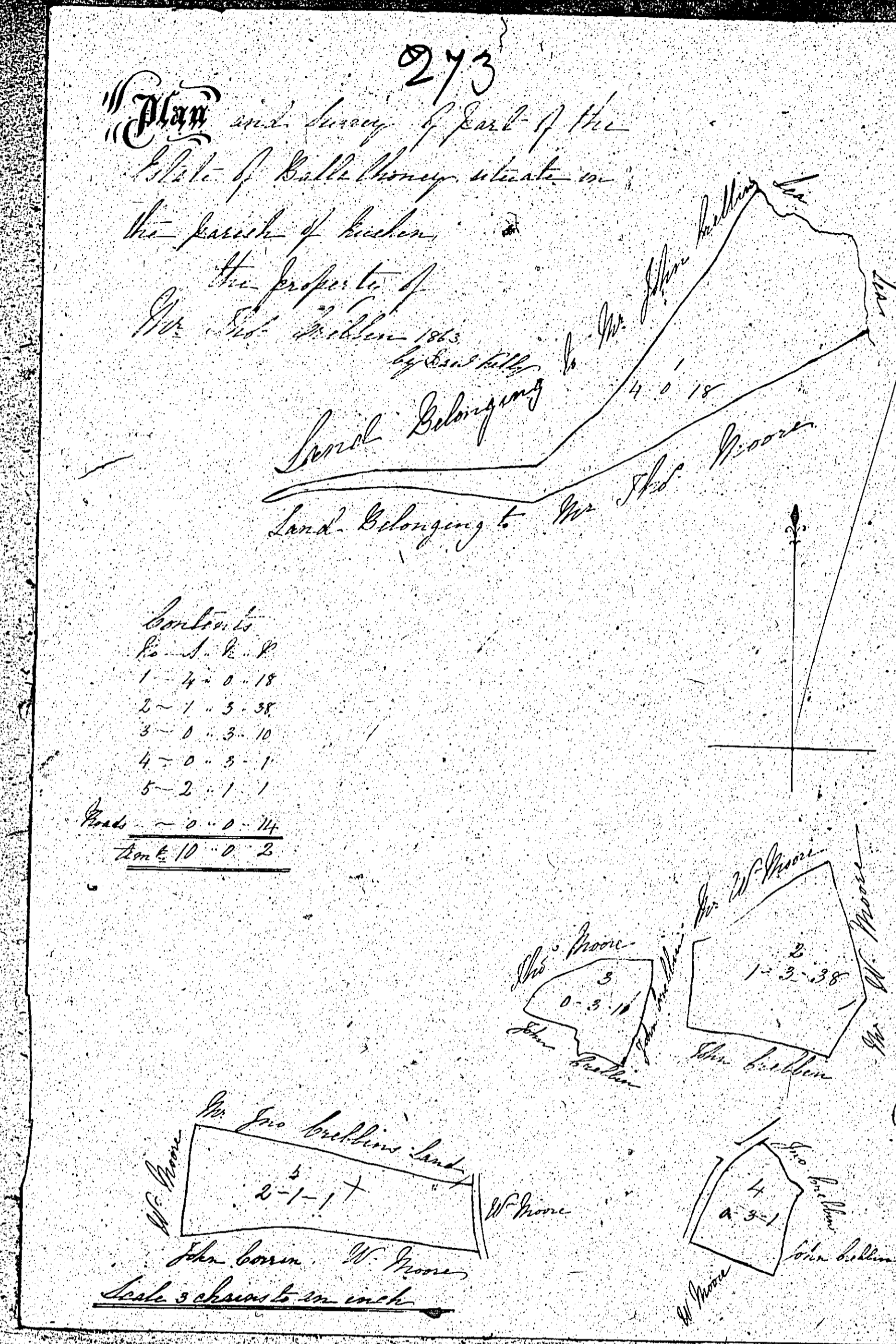


ISLE OF MAN GOVERNMENT: GENERAL REGISTRY

ASYLUM PLANS: PARISH OF RUSHEN

Originals coloured (decorative)

1:23



ISLE OF MAN GOVERNMENT: GENERAL REGISTRY

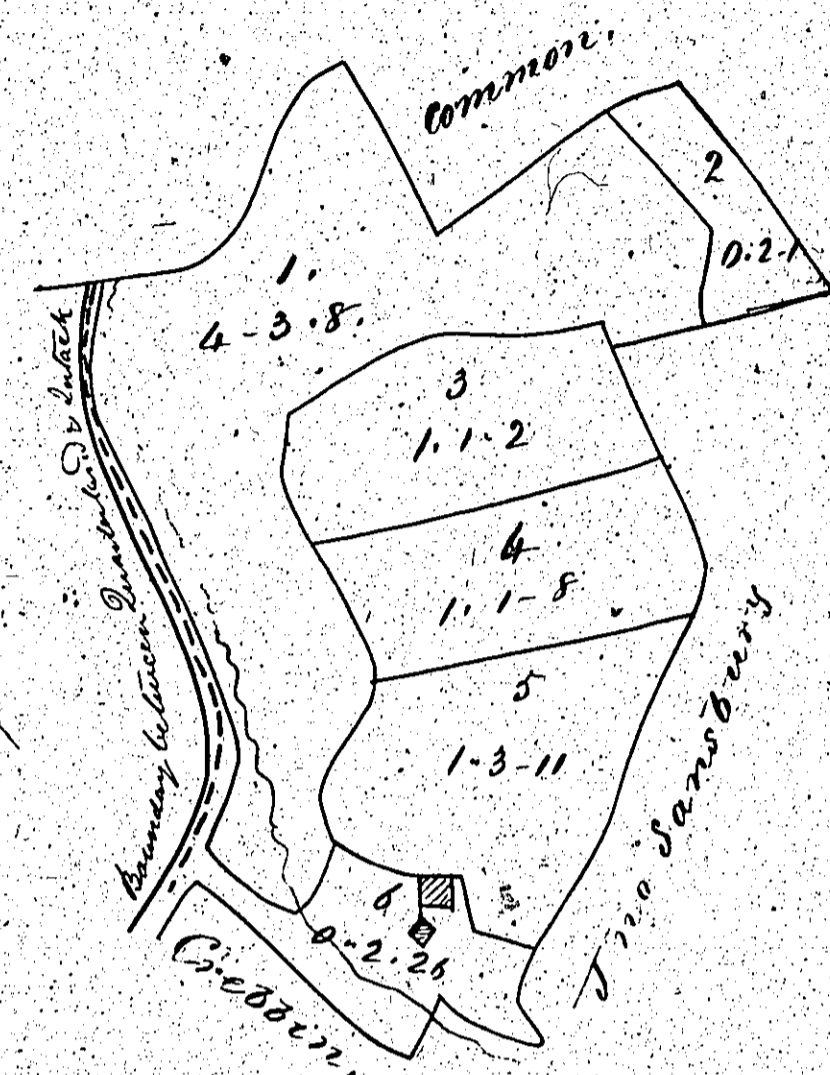
ASYLUM PLANS: PARISH OF RUSHEN

Originals coloured (decorative)

1:23

*Trelack in Rushen
belonging to W^m Moore.*

(275)

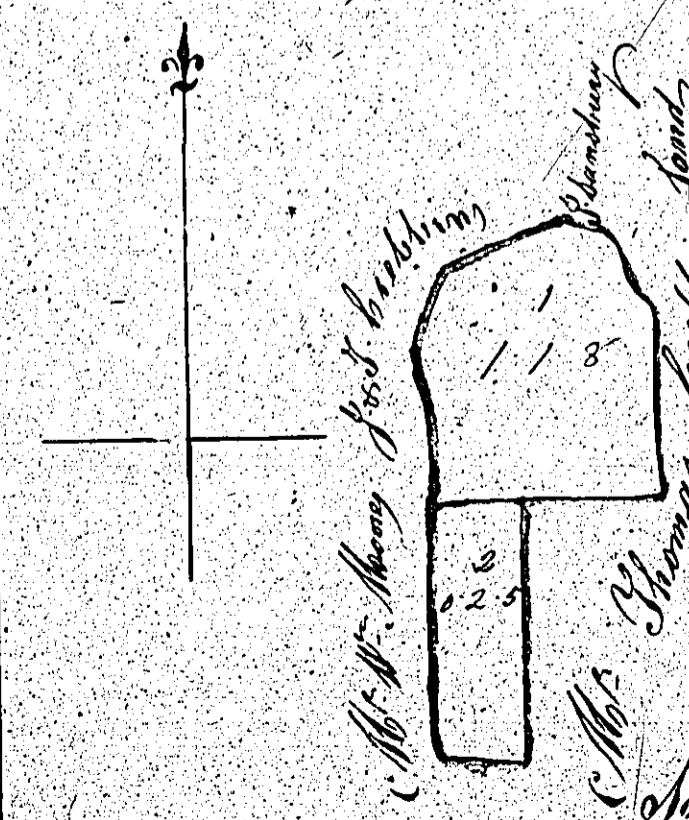


Content 10.1.16

Scale 3 Chain

*Copied from the Original
by Woods Singer
1865*

*Plan and Survey of Part of the Estate
of Ballachind Estate in the Parish
of Rushen the Property of
W^m John Keble 1865 by S. Kelly*



*Content
No. 1-1.8
0-2.5
1-1.8*

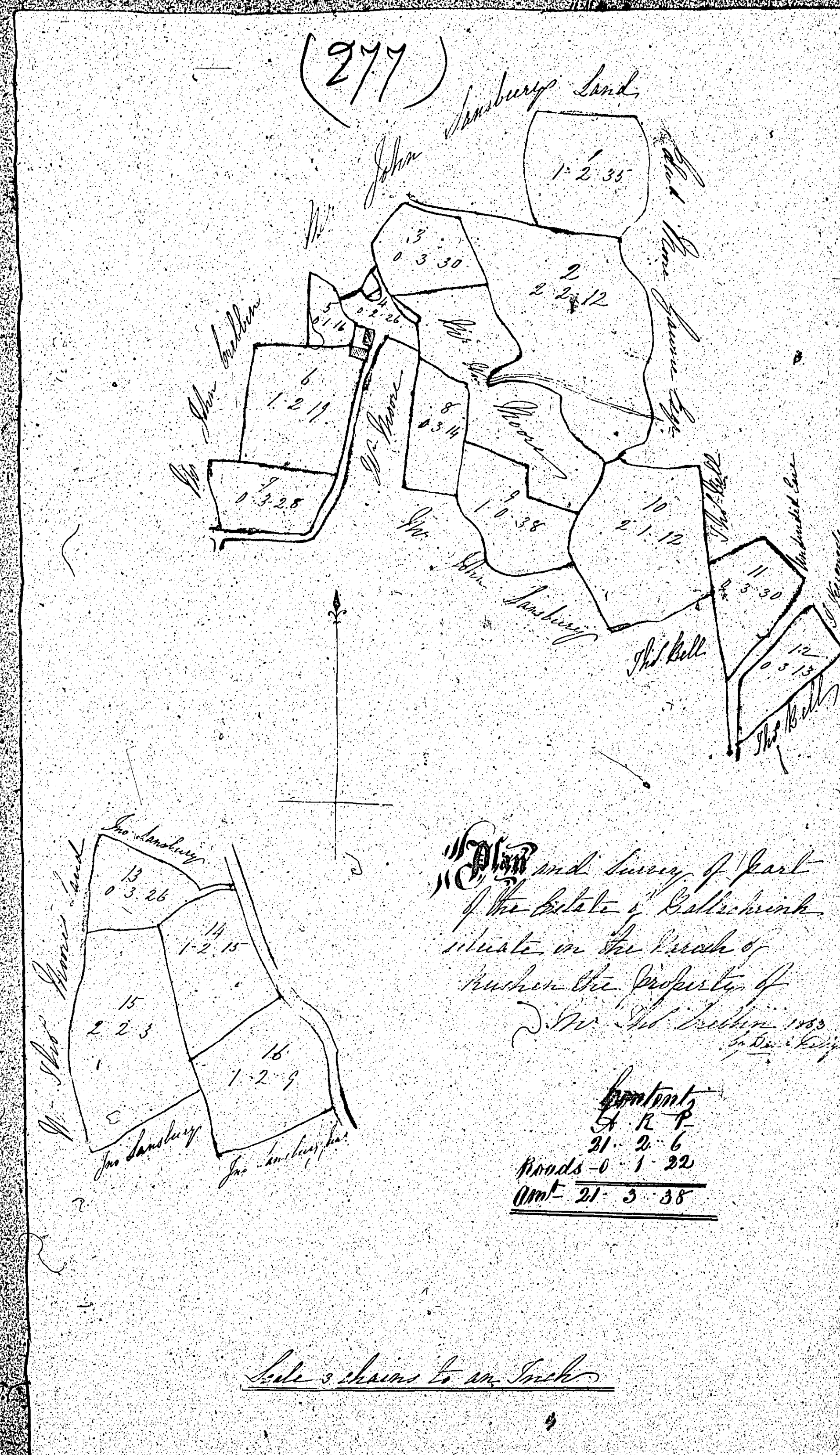
Scale 3 Chain to an inch

ISLE OF MAN GOVERNMENT: GENERAL REGISTRY

ASYLUM PLANS: PARISH OF RUSHEN

Original coloured (decorative)

1:23

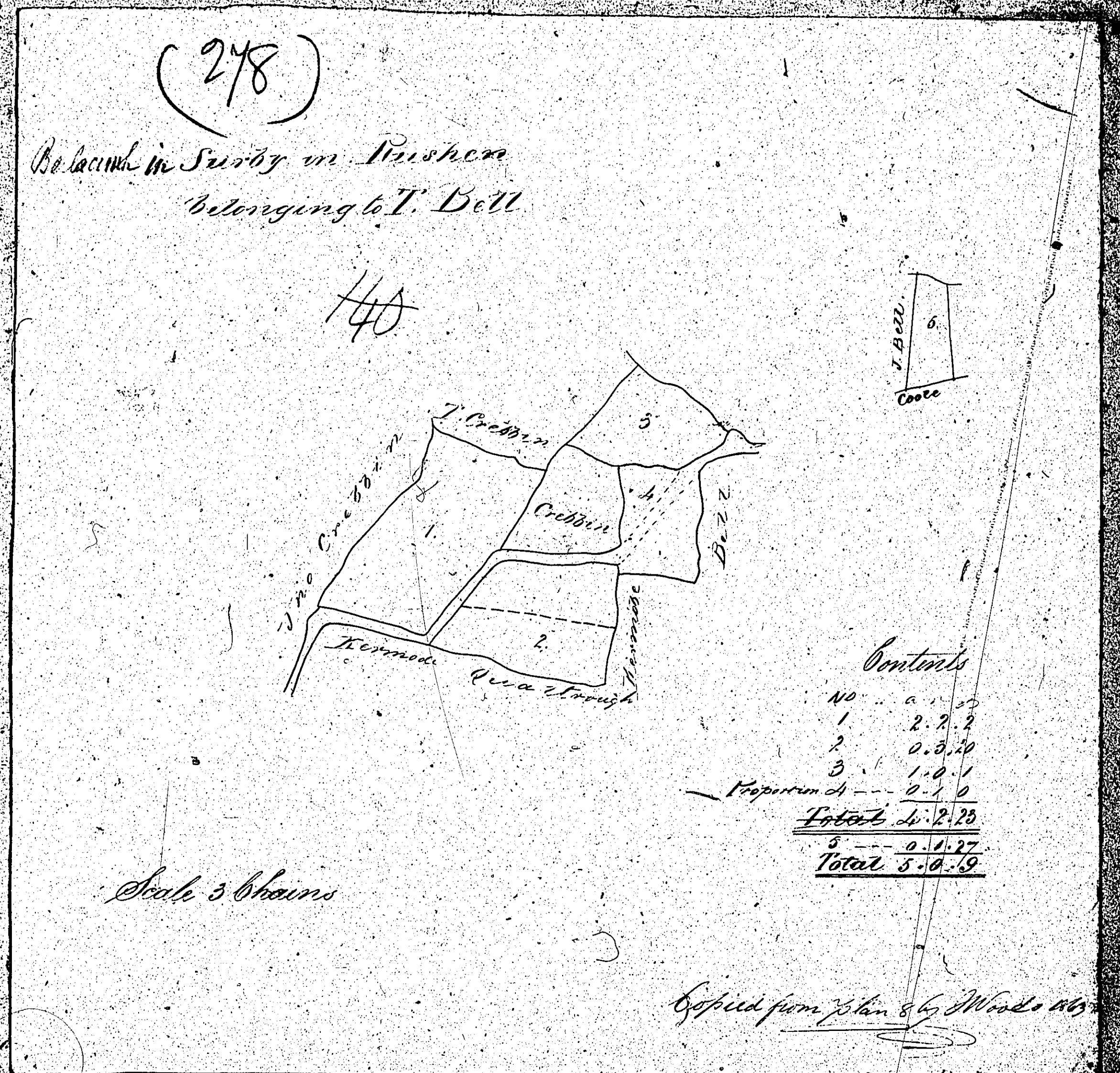


ISLE OF MAN GOVERNMENT: GENERAL REGISTRY

ASYLUM PLANS: PARISH OF RUSHEN

Original monotone

1:23



ISLE OF MAN GOVERNMENT: GENERAL REGISTRY

ASYLUM PLANS: PARISH OF RUSHEN

Original coloured (decorative), marked

1:23

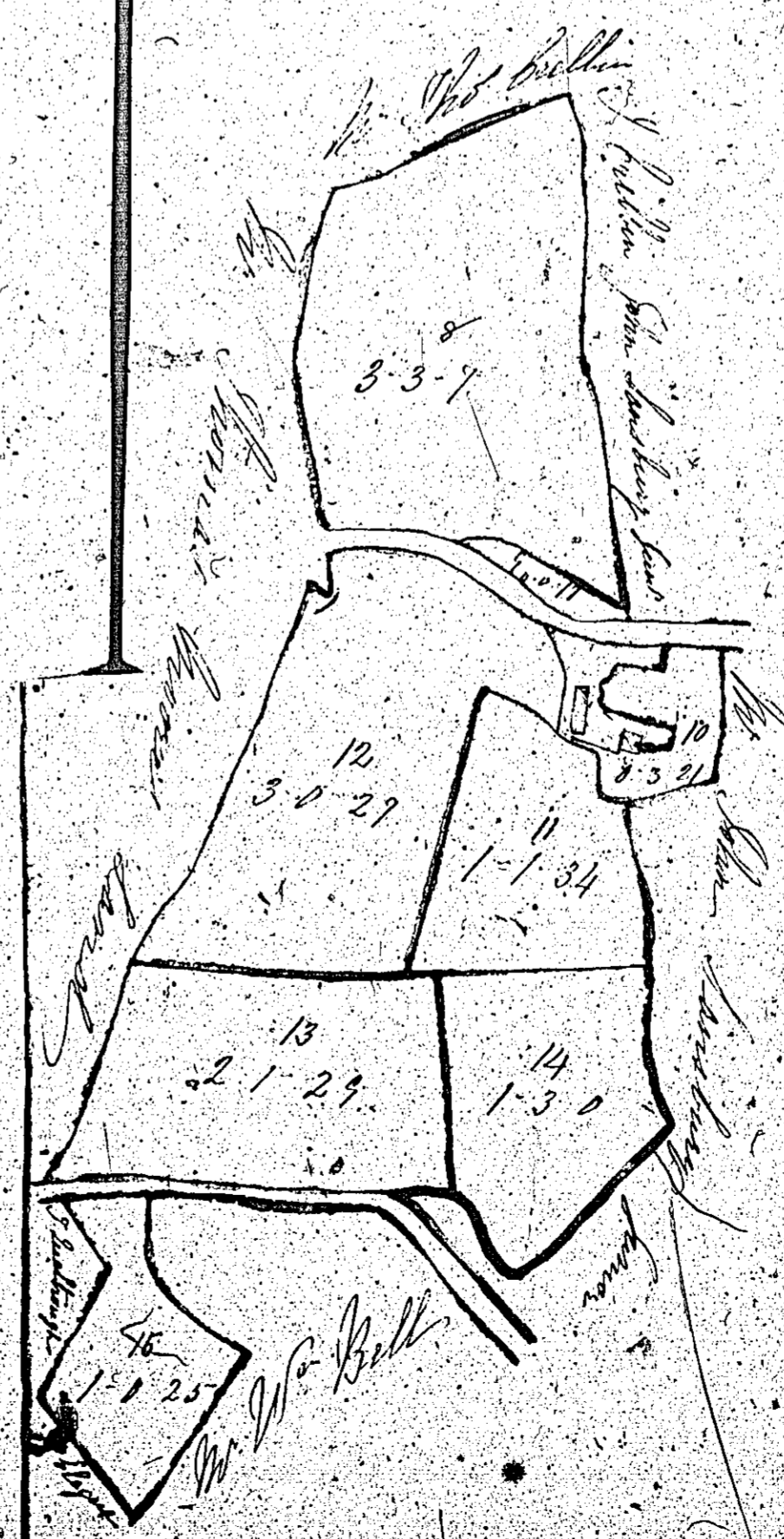
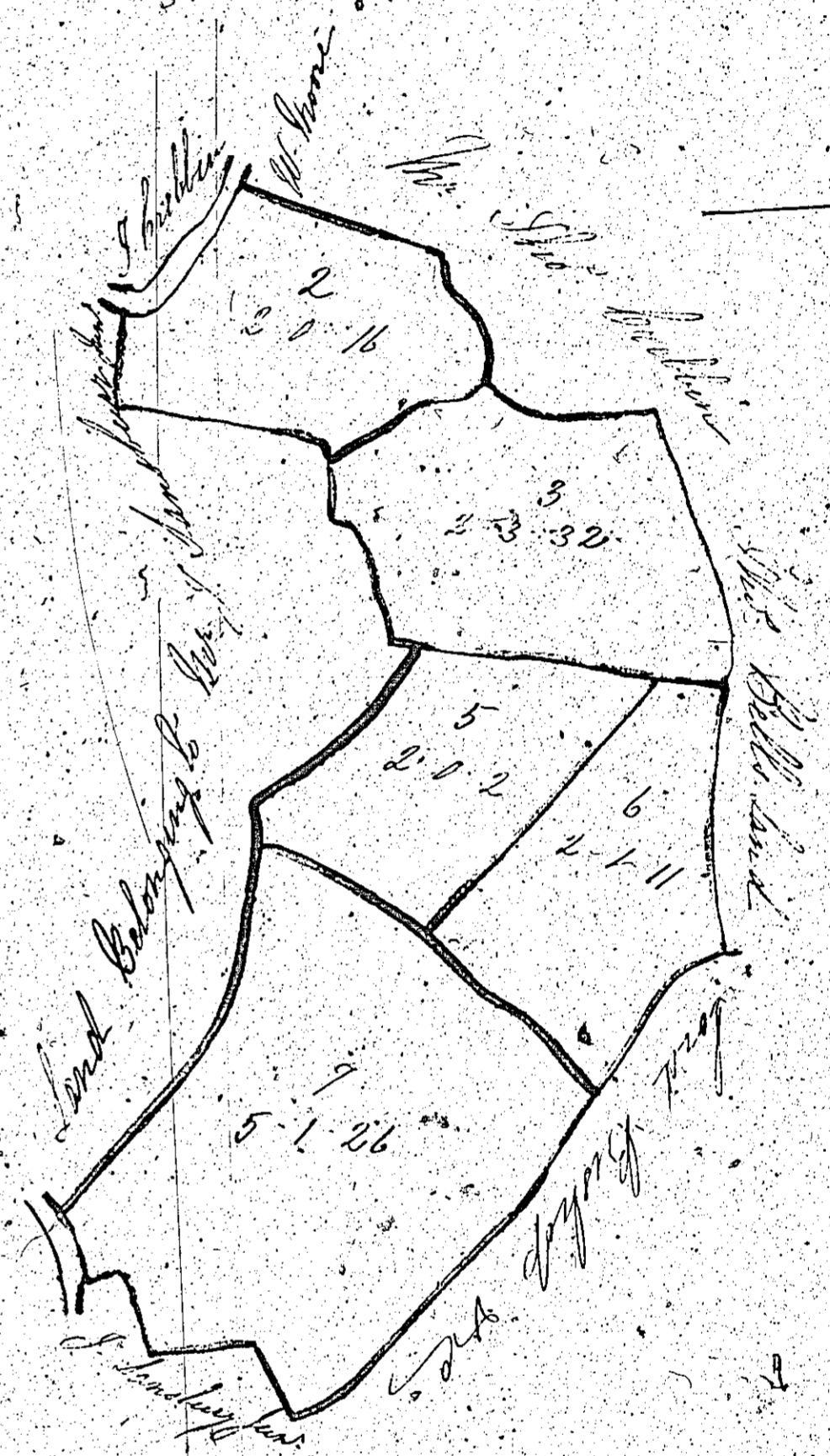
2/9

4-3-16

Spontents

No. A. B. P.

1	4	3	16
2	2	0	16
3	2	3	32
4	1	1	25
5	2	0	2
6	2	1	11
7	5	1	26
8	3	3	7
9	0	0	11
10	0	3	21
11	1	1	34
12	3	0	27
13	2	1	29
14	1	3	0
15	1	0	25
Road	0	0	38
Went	36	0	6



Plan and survey of part of the estate of Ballachuan situated in the Parish of Rushen the property of Sir John Lambert Bart. 1824

Scale 3 inches to an acre

ISLE OF MAN GOVERNMENT: GENERAL REGISTRY

ASYLUM PLANS: PARISH OF RUSHEN

Original coloured (decorative)

1:23

