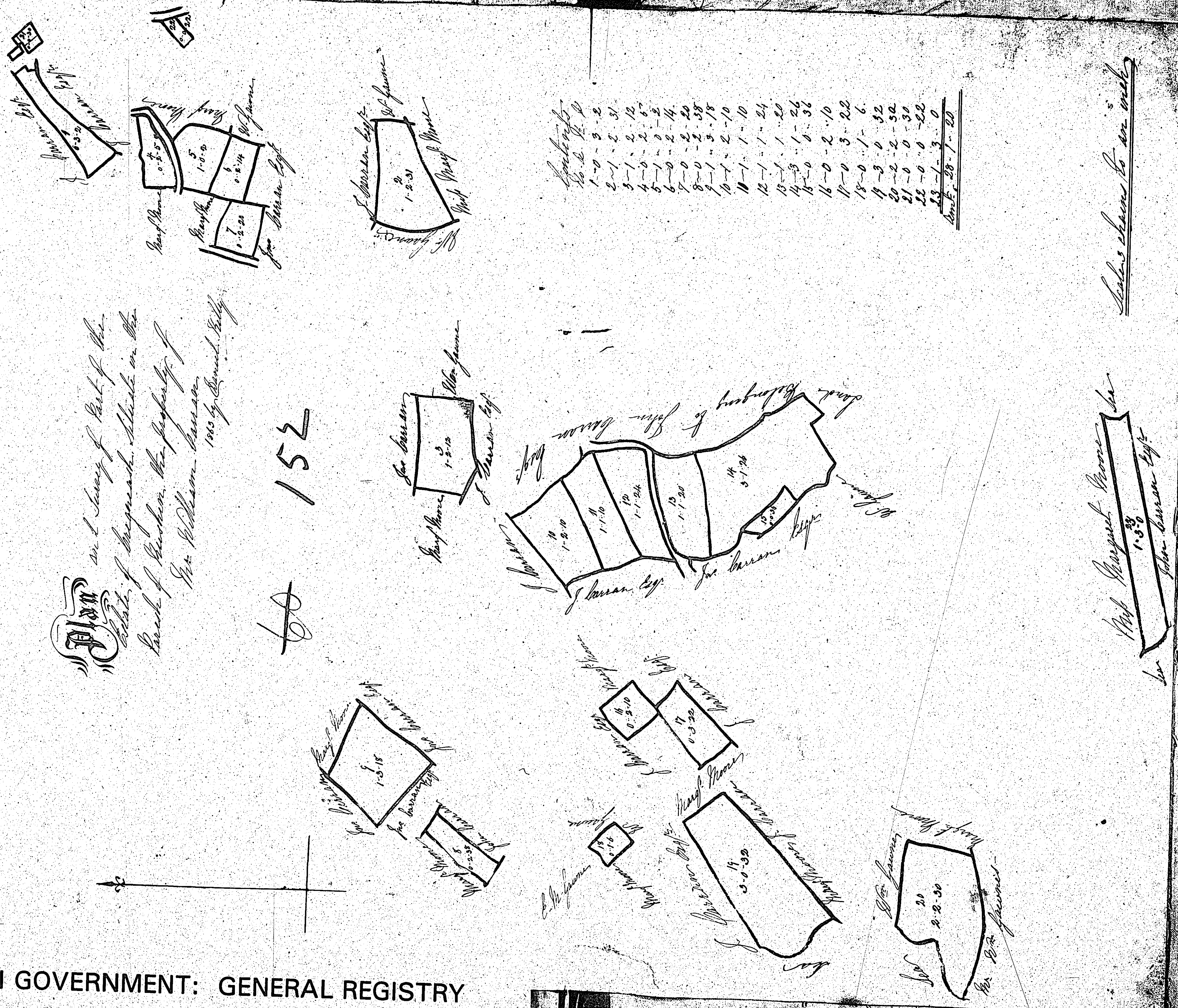


Part or Survey of Part of the
 Estate of Margaret, Widow in the
 Parish of Rushen, the property of
 Mr. William Barron
 1865 by David Kelly

to 152



1-0	3-2
2-1	2-31
3-1	2-12
4-0	2-6
5-1	0-2
6-0	2-14
7-0	2-20
8-0	2-38
9-1	3-18
10-1	2-10
11-1	1-10
12-1	1-24
13-1	1-20
14-3	1-24
15-0	0-36
16-0	2-10
17-0	3-22
18-0	1-6
19-3	0-32
20-2	2-50
21-0	0-30
22-0	0-22
23-1	3-0
24-1	1-20

See return to an inch

Part Survey of Mr. Barron
 1-3-30
 John Barron Esq.

ISLE OF MAN GOVERNMENT: GENERAL REGISTRY

ASYLUM PLANS: PARISH OF RUSHEN

Original coloured (decorative)

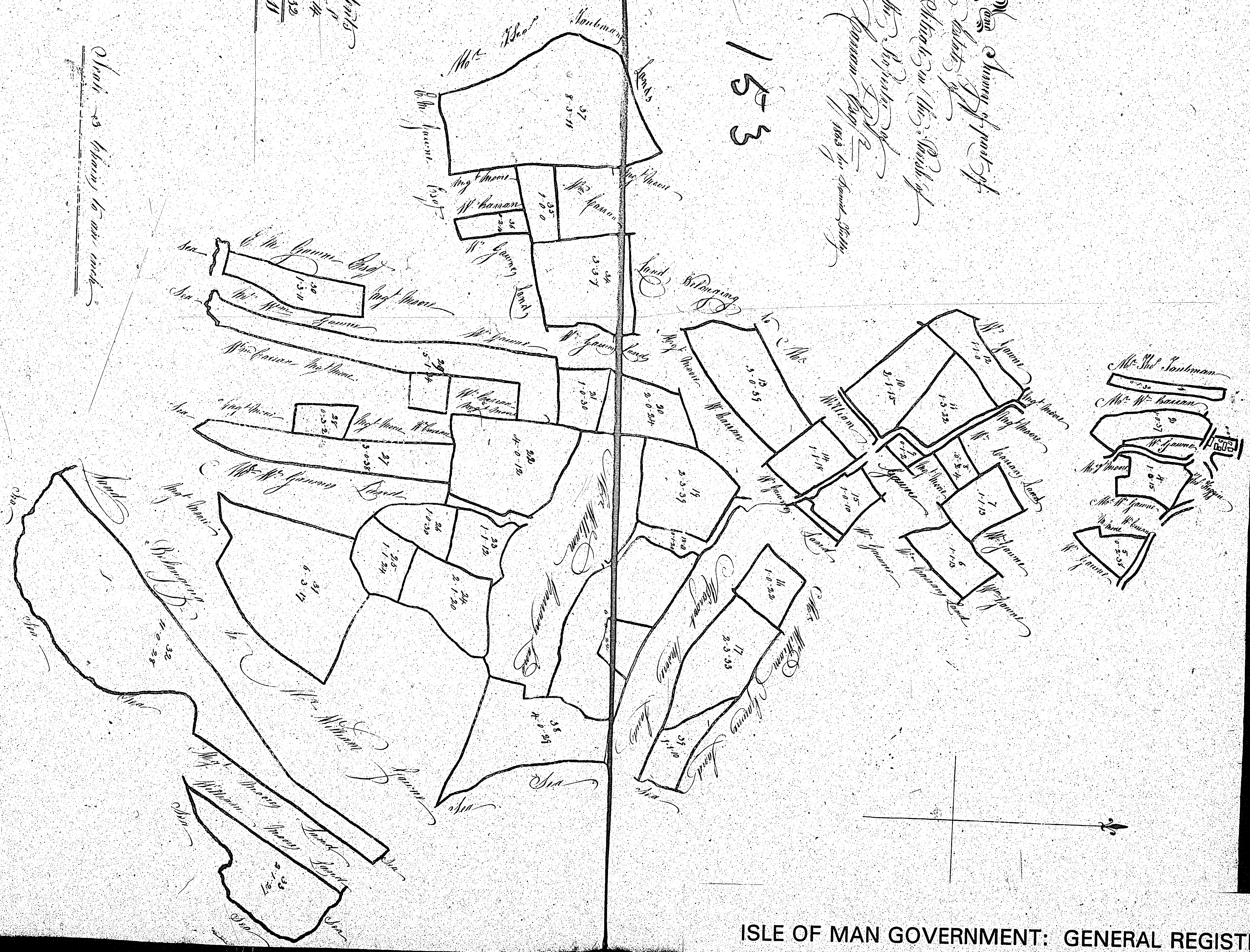
1:23

*Plan of the change of part of
the rectory of
St. Andrew's Church in the Parish of
Rushen, the property of
John James Esq. 1853 by James Barry*

153

*Particulars
of R. P.
1853-4
1 3 38
11 3 11*

Chart as shown to our mind



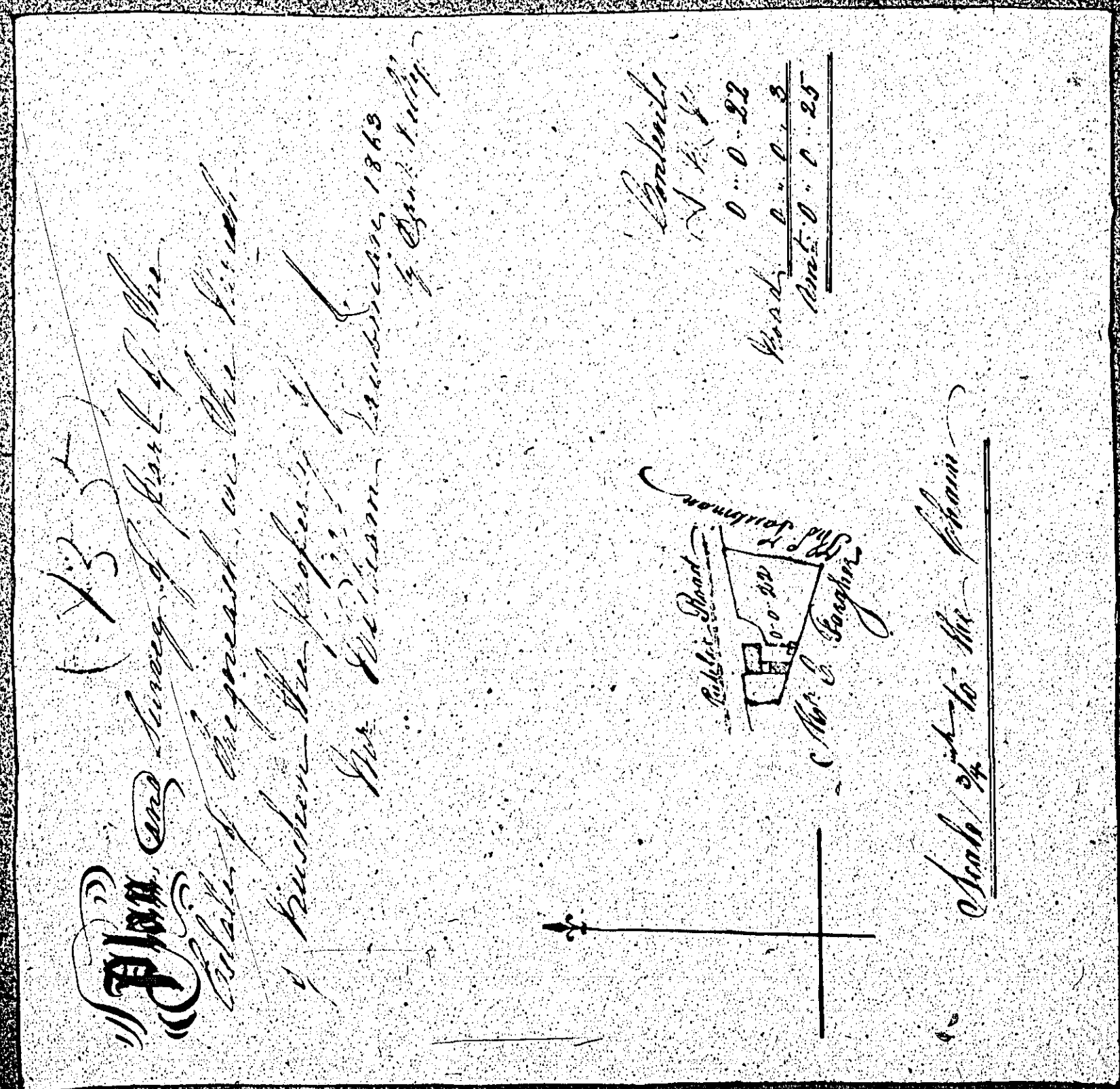
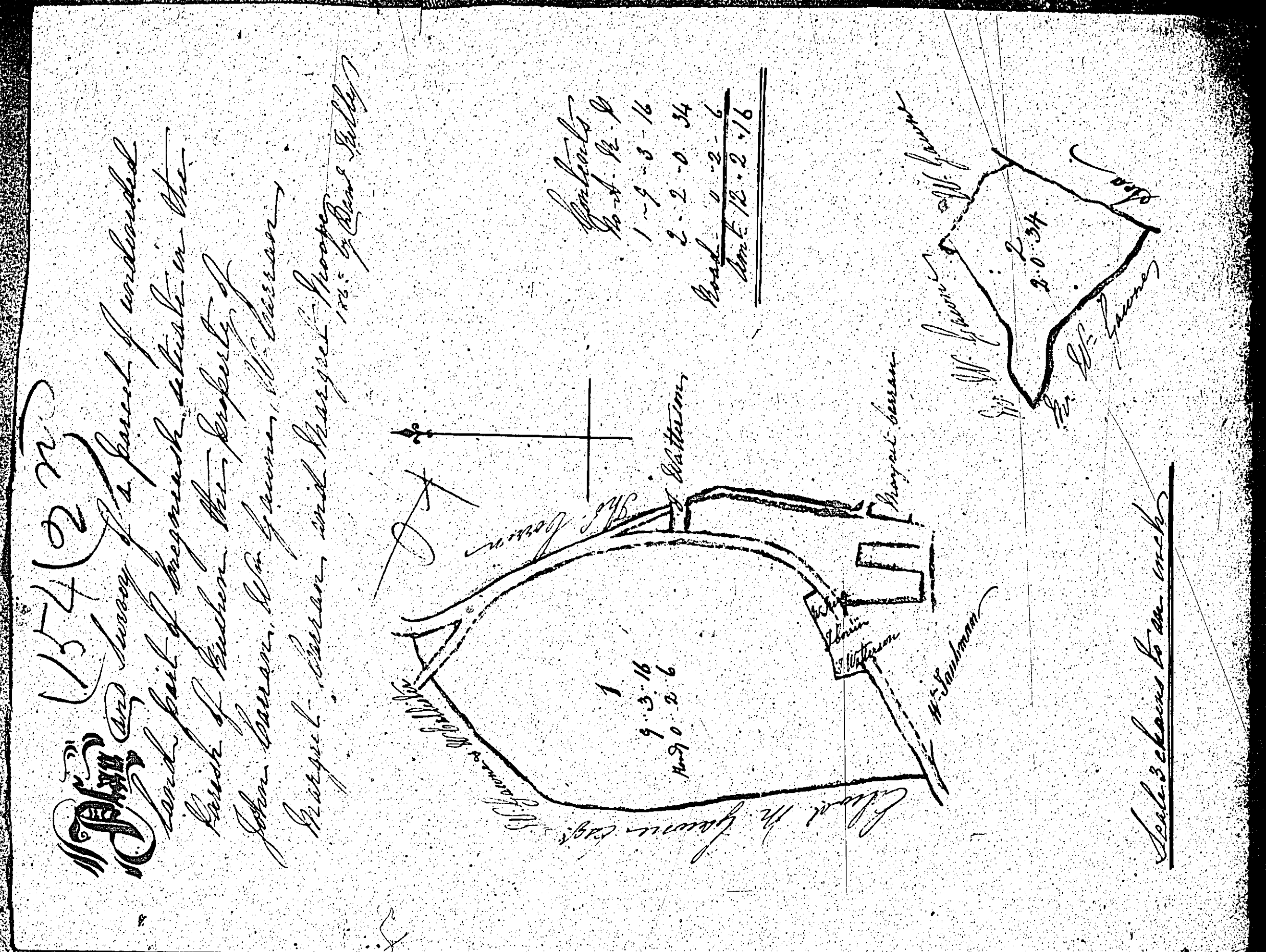
ISLE OF MAN GOVERNMENT: GENERAL REGISTRY
ASYLUM PLANS: PARISH OF RUSHEN
Original coloured (decorative) 1:23

There is a second plan
 numbered 154
 on the following page

ISLE OF MAN GOVERNMENT: GENERAL REGISTRY
 ASYLUM PLANS: PARISH OF RUSHEN

Originals coloured (decorative)

1:23



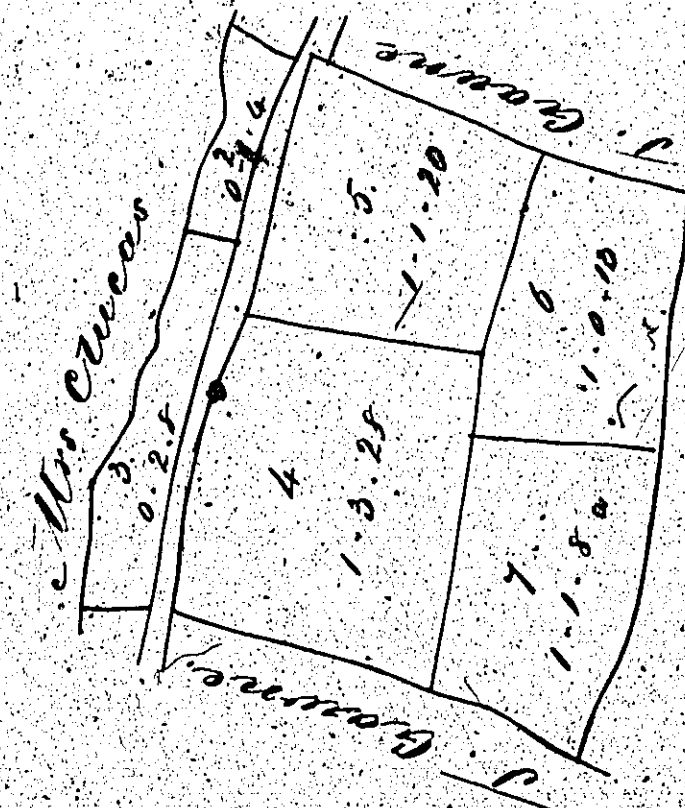
ISLE OF MAN GOVERNMENT: GENERAL REGISTRY

ASYLUM PLANS: PARISH OF RUSHEN

Originals monotone

1:23

Part of Manually in Rushen
belonging to J. Brown



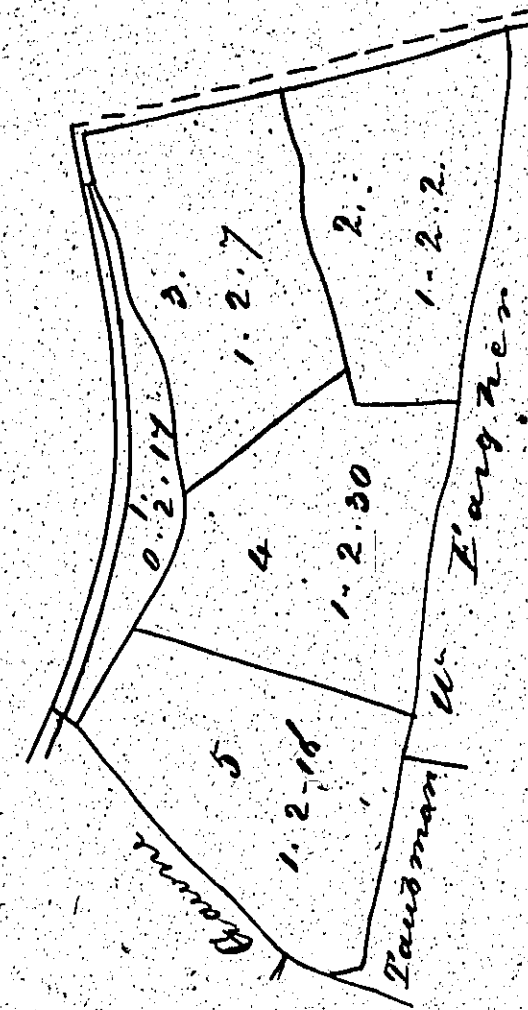
Scale of 3 chains

Content 8.1.20
Perch. 0.1.10
Total 8.2.30

Copied from plan 43
G. H. H. 1863

1571

Part of Manually in Rushen
belonging to James Burt



Scale of 3 chains

Copied from plan 43
W. H. H. 1863

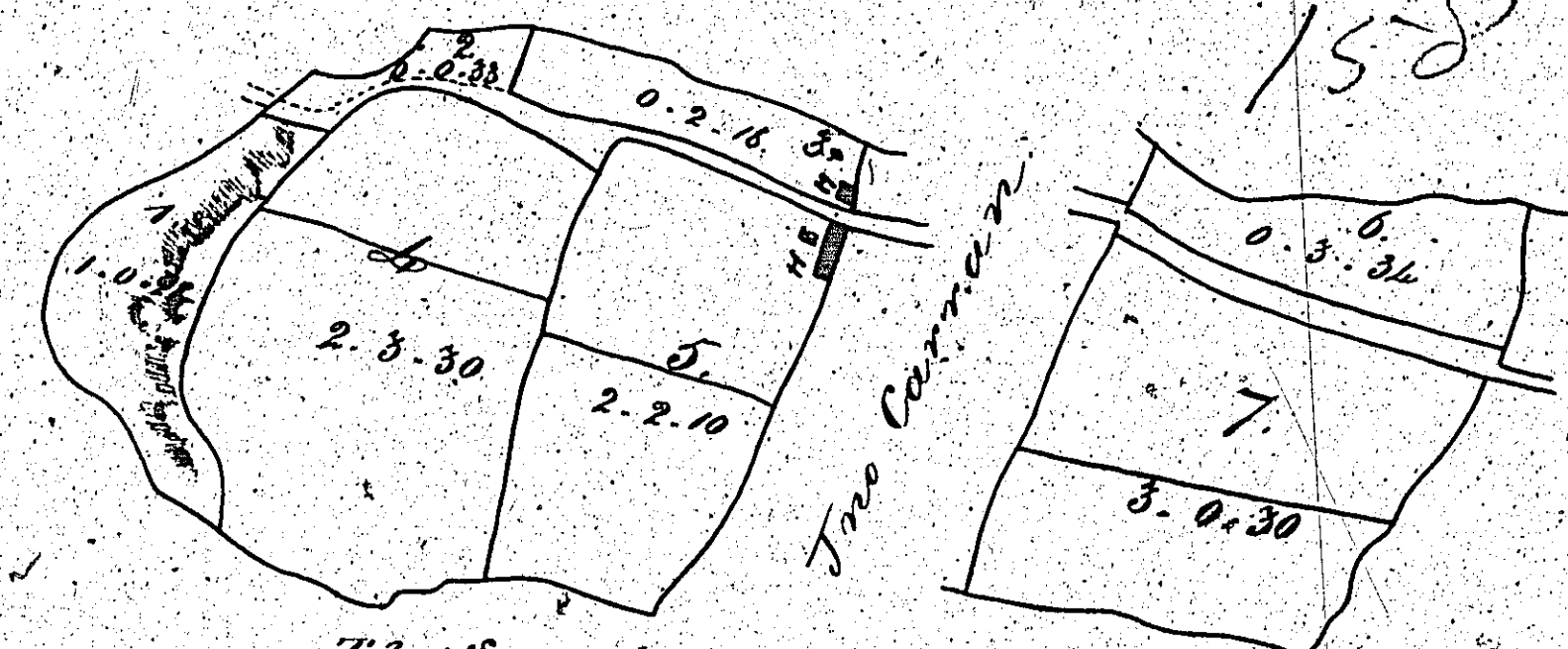
Content of B. 31

ISLE OF MAN GOVERNMENT: GENERAL REGISTRY

ASYLUM PLANS: PARISH OF RUSHEN

Originals monotone

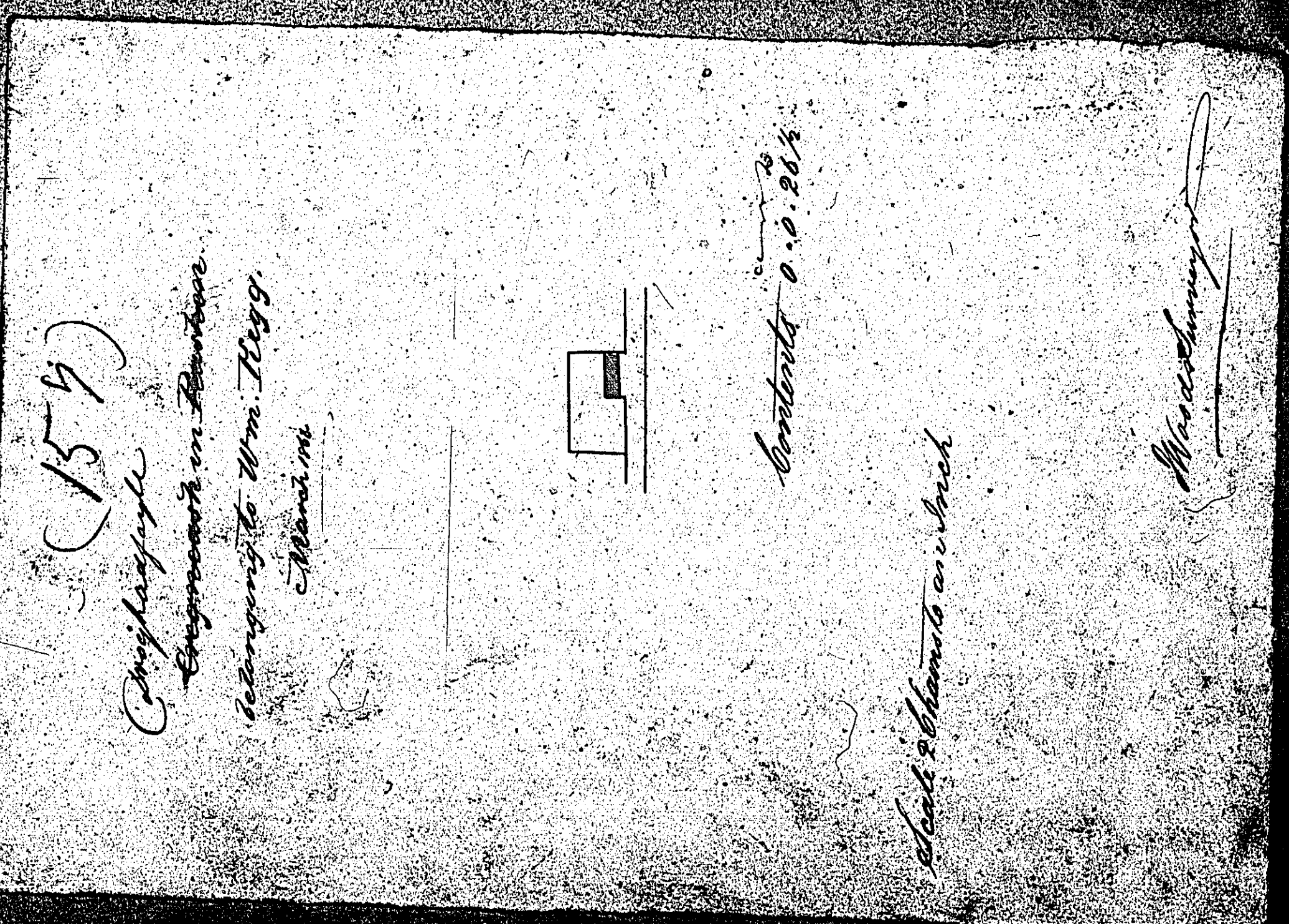
1:23



*Snow Valley in Rushen
belonging to Danl. Watterson
March 1863.*

Scale & Chains to an Inch. Contents 13. 1. 12

Copied from plan 93 by Woods, Surveyor



*(154)
Chrysalis
Rushen in Rushen
belonging to Wm. Dwyer
March 1863*

Contents 0. 2. 20 1/2

Scale & Chains to an Inch

Woods