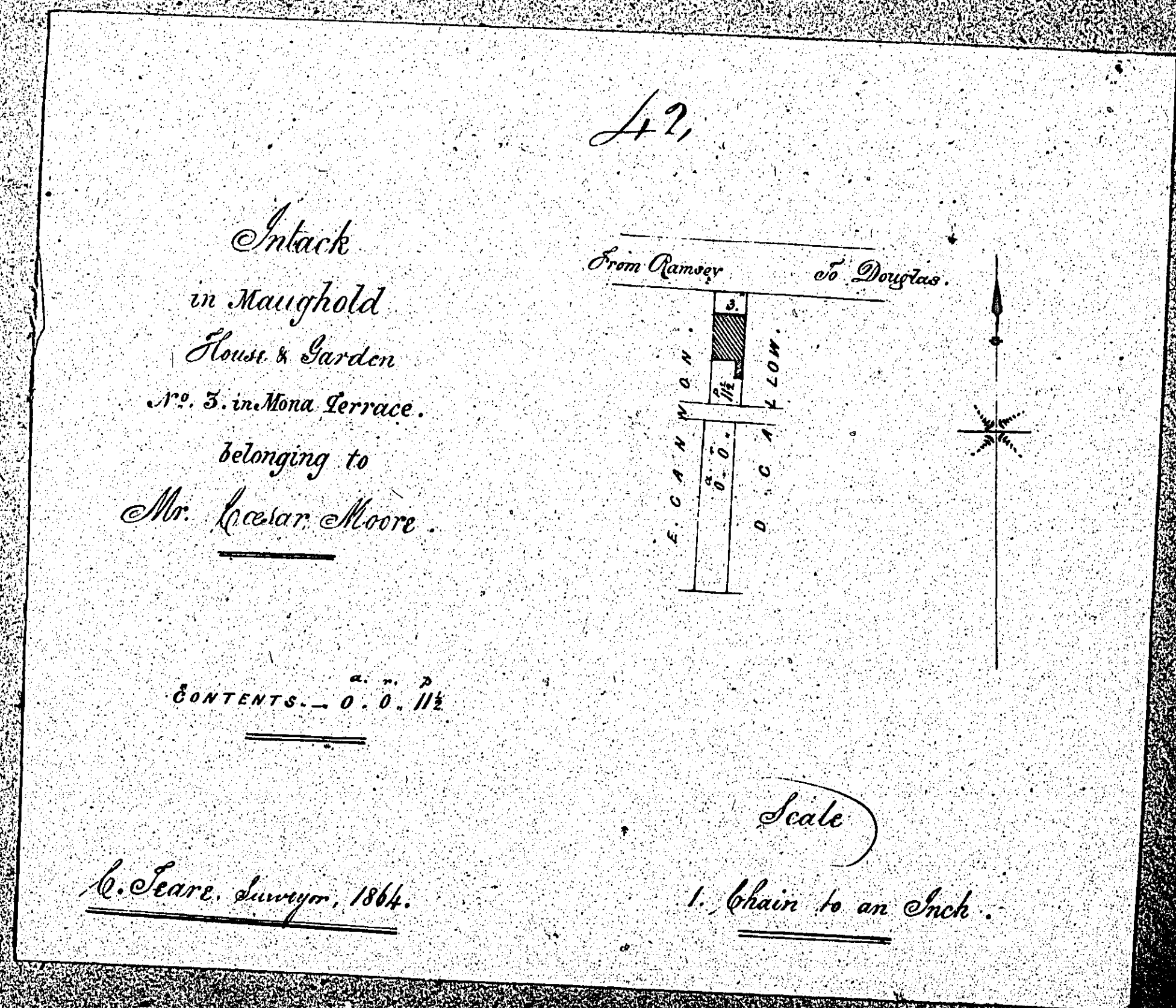
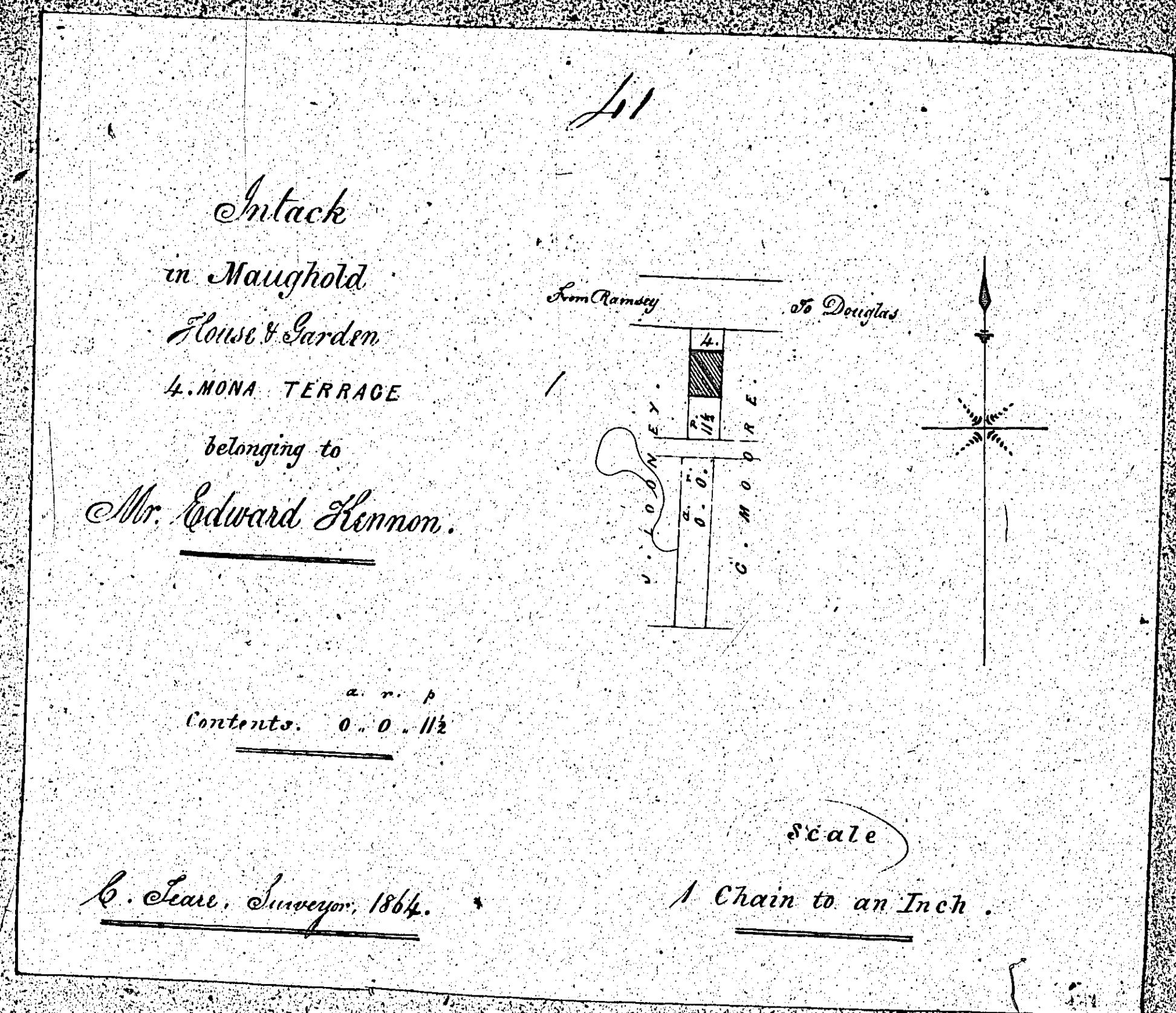


ISLE OF MAN GOVERNMENT: GENERAL REGISTRY

ASYLUM PLANS: PARISH OF MAUGHOLD

Originals monotone

1:23



ISLE OF MAN GOVERNMENT: GENERAL REGISTRY

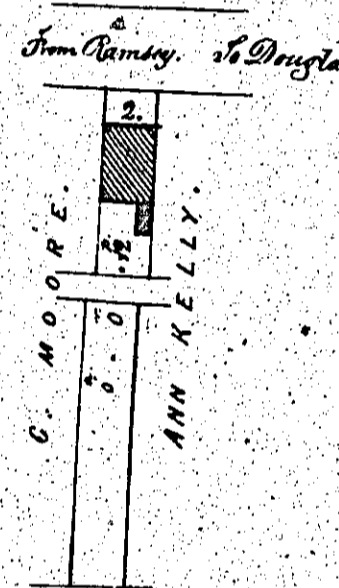

ASYLUM PLANS: PARISH OF MAUGHOLD

Original monotone

1:23

43

Intack
in Maughold
House and Garden
No. 2. in Mona Terrace
belonging to
Mr. Daniel Gallon



CONTENTS . . . 0 . 0 . 12

Scale
1 Chain to an Inch.

H. Seare, Surveyor. 1864.

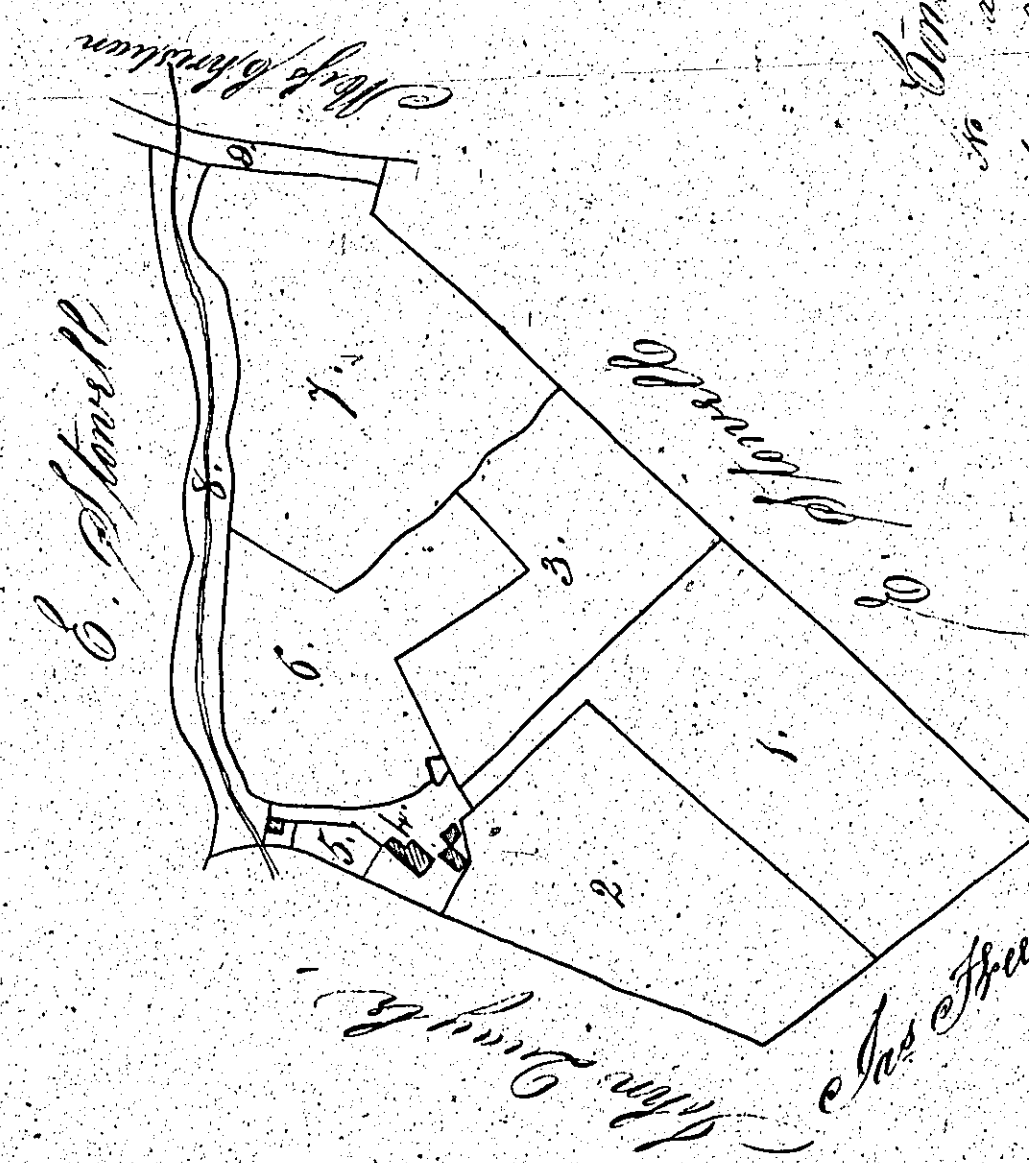
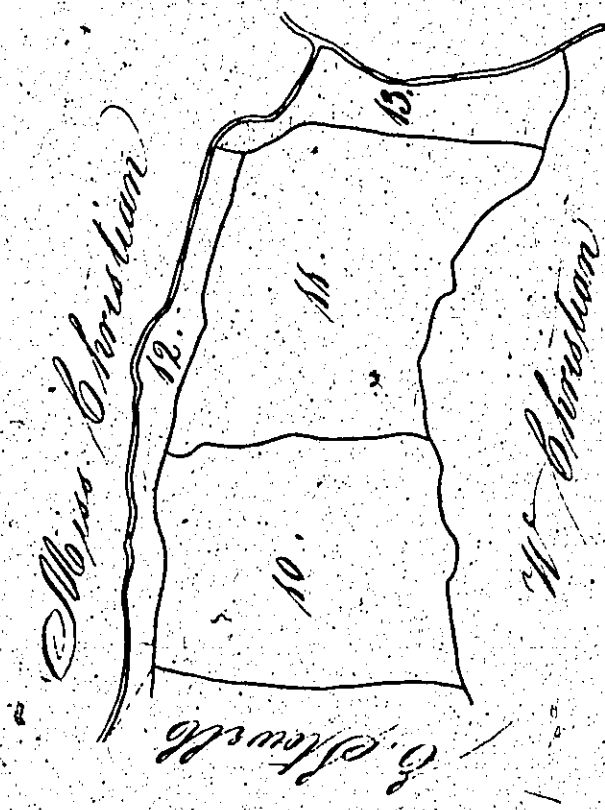
ISLE OF MAN GOVERNMENT: GENERAL REGISTRY

ASYLUM PLANS: PARISH OF MAUGHOLD

Original monotone

1:23

(43)



Section	Contents
1	2.0.25
2	1.5.5
3	1.1.30
4	0.0.32
5	0.0.20
6	1.1.22
7	2.0.39
8	0.3.4
9	0.0.17
10	1.2.27
11	1.5.24
12	0.1.33
Total 14.3.0	

See bound to an inch

Inch in
Maughold
Parish
W. M. C. Mearns

Copied from the plan 51.
By James Woods 1898

ISLE OF MAN GOVERNMENT: GENERAL REGISTRY

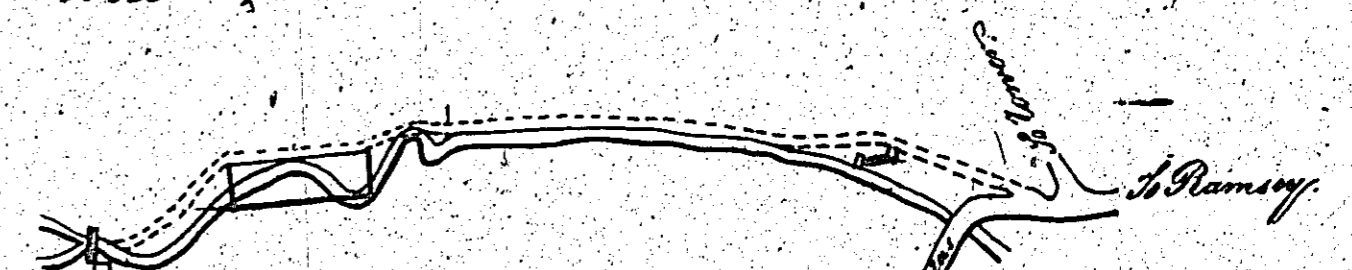
ASYLUM PLANS: PARISH OF MAUGHOLD

1:23

47 Original monotone -

48 Original coloured (decorative)

*Maughold
belonging to
The Ramsey Water Works
Company.*



Contents

Reservoir --- 0.2.26

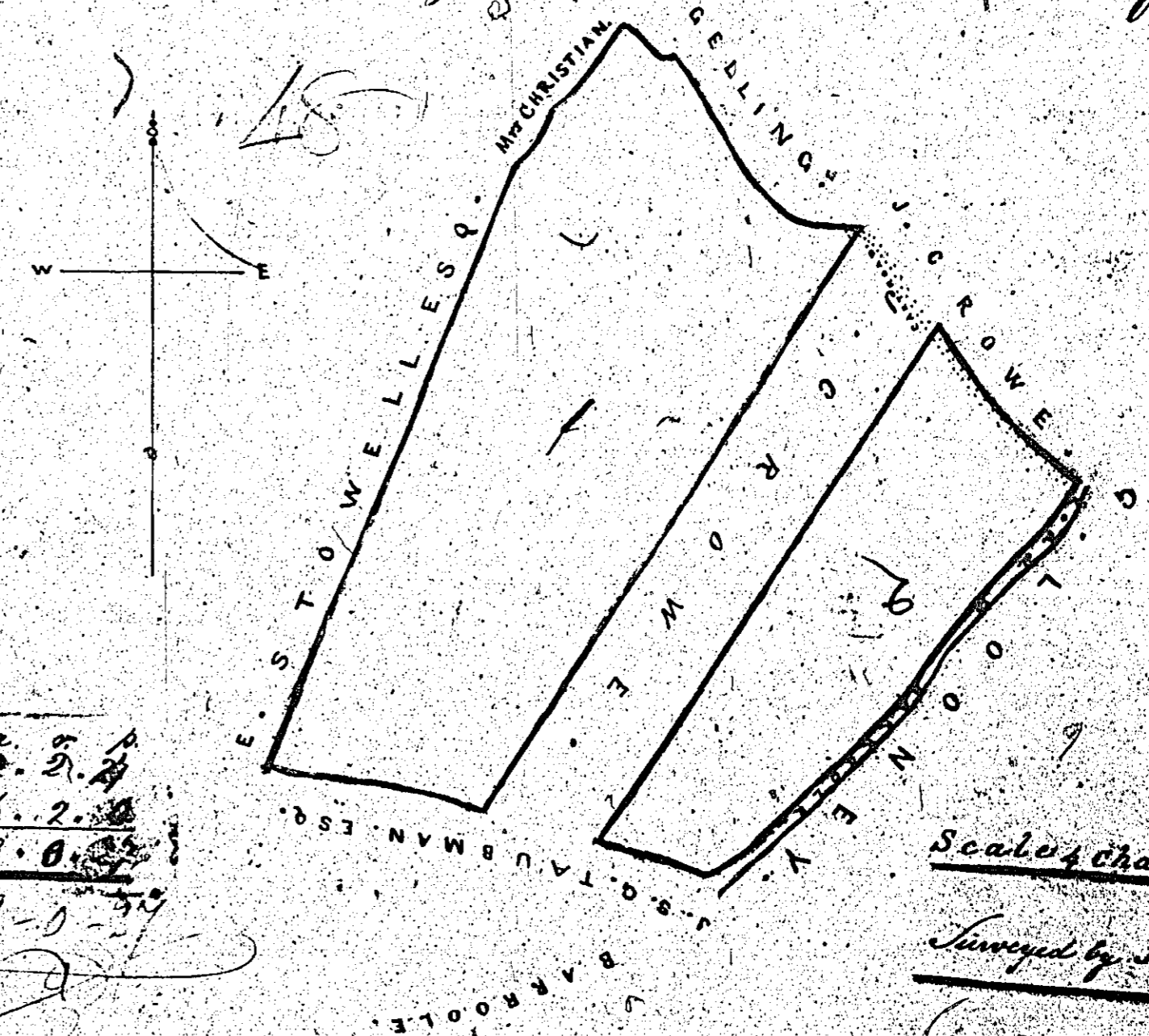
Road --- 0.3.0

Total --- 1.1.26

6 Chains to an Inch.

*Copied from Ballure Plan
by James Woods 1880.*

*A Plan of Part of the Sntack of Ballure in the Parish of Maughold
The Property of William Kerruish Esq.*



Contents
18.5.24
6.2.26
19.0.24
19.0.24

Scale 4 chains to an inch

Surveyed by J. Seave 1868

