

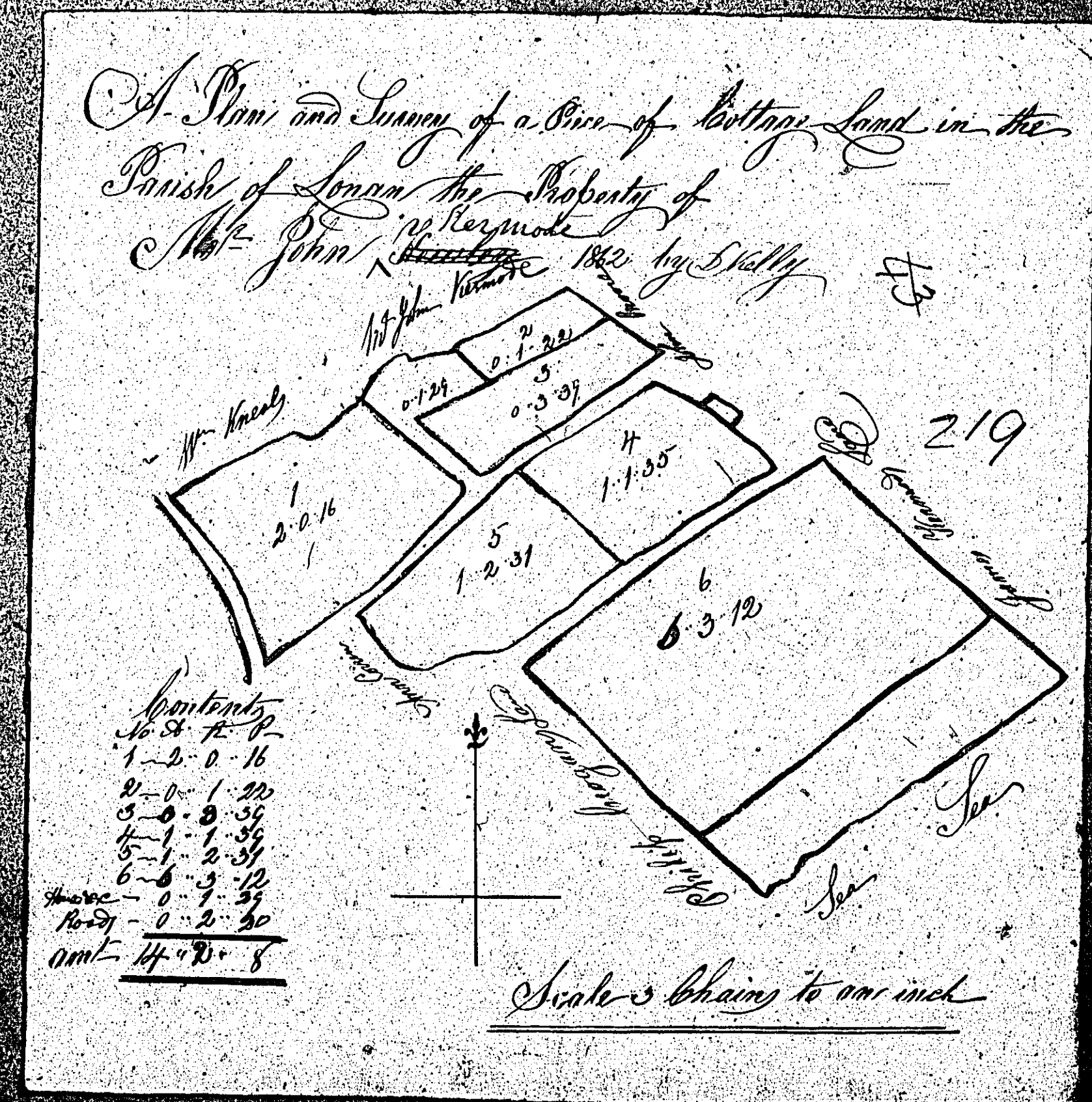
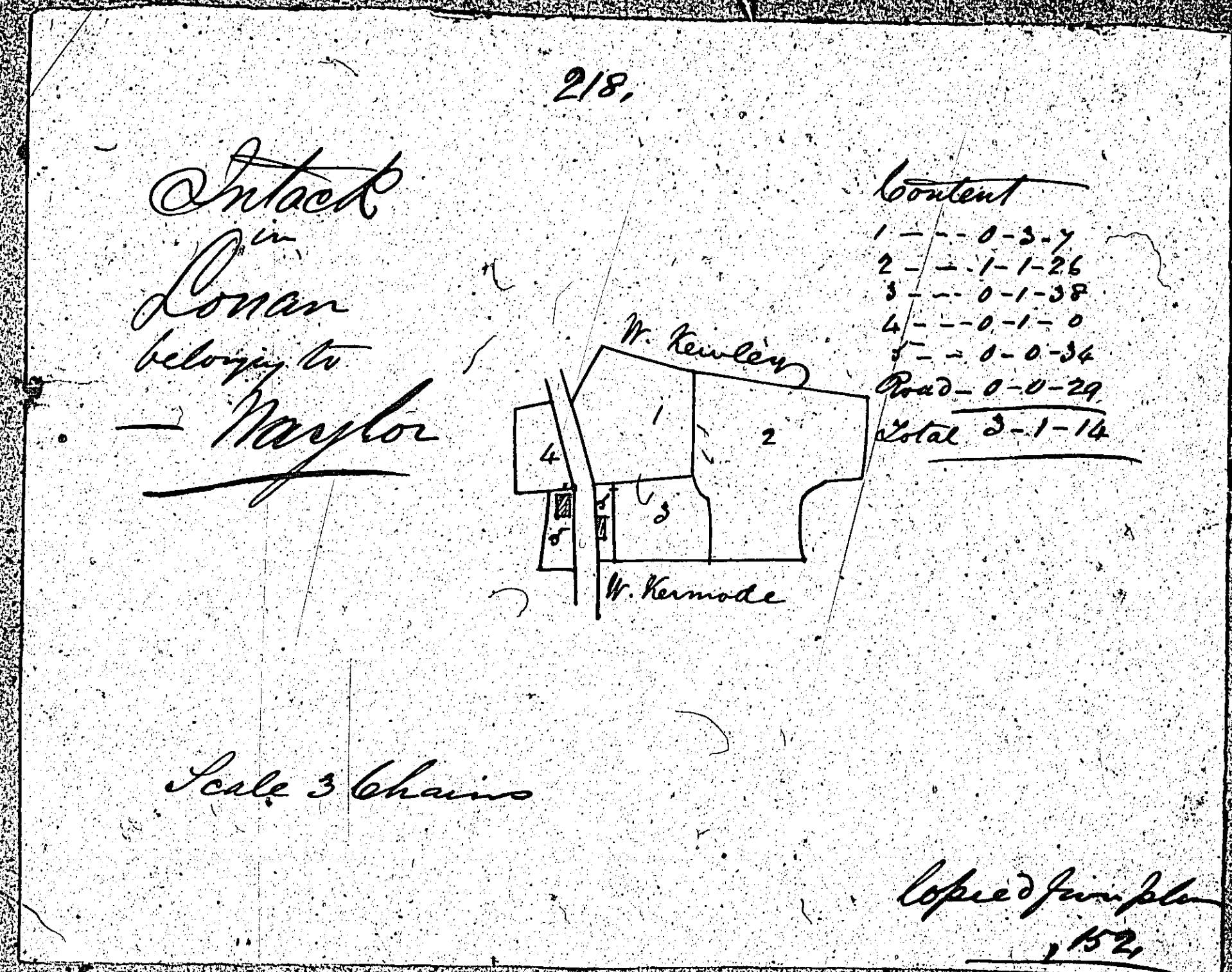
ISLE OF MAN GOVERNMENT: GENERAL REGISTRY

ASYLUM PLANS: PARISH OF LONAN

1:23

218 Original monotone

219 Original coloured (decorative)

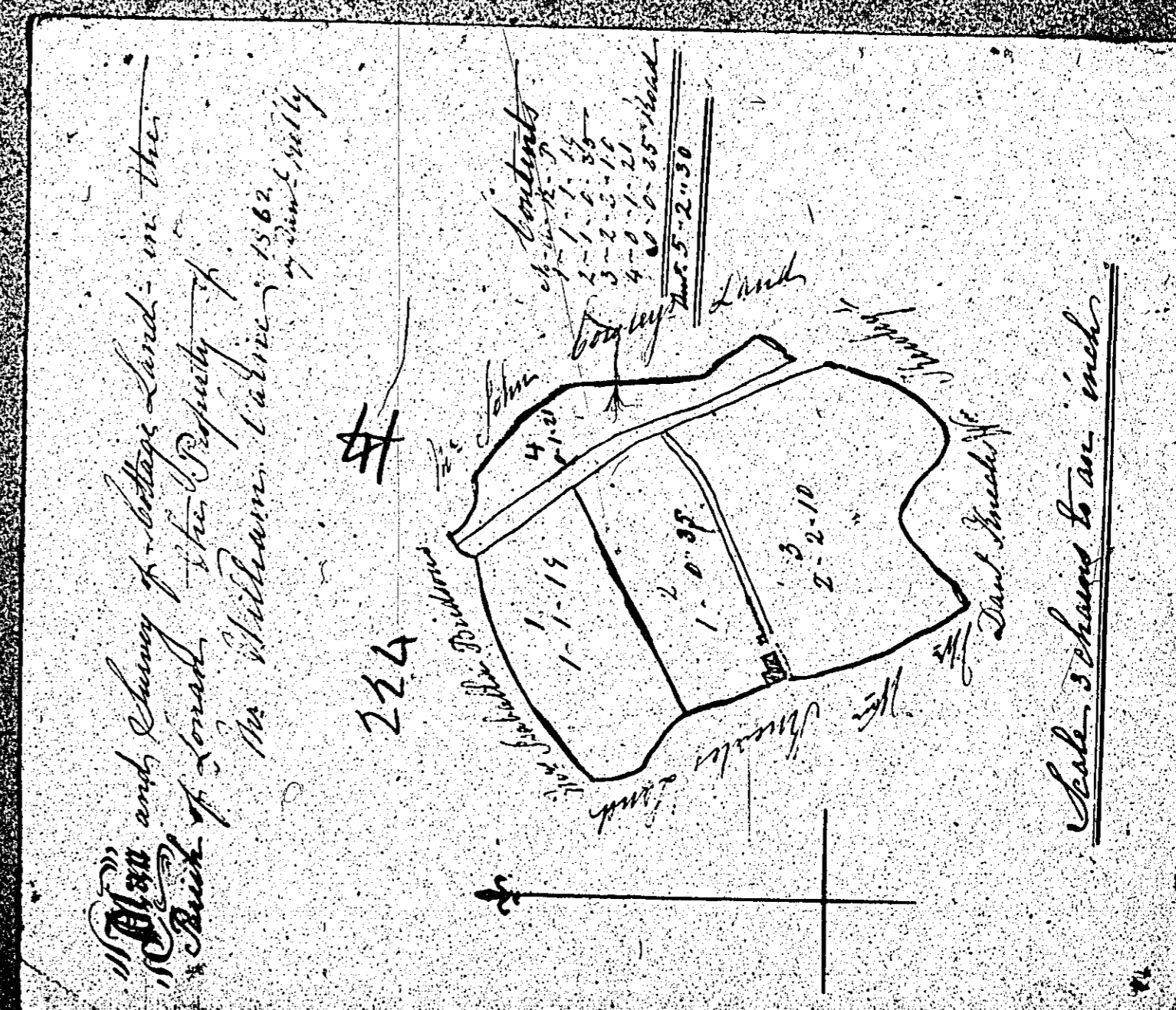
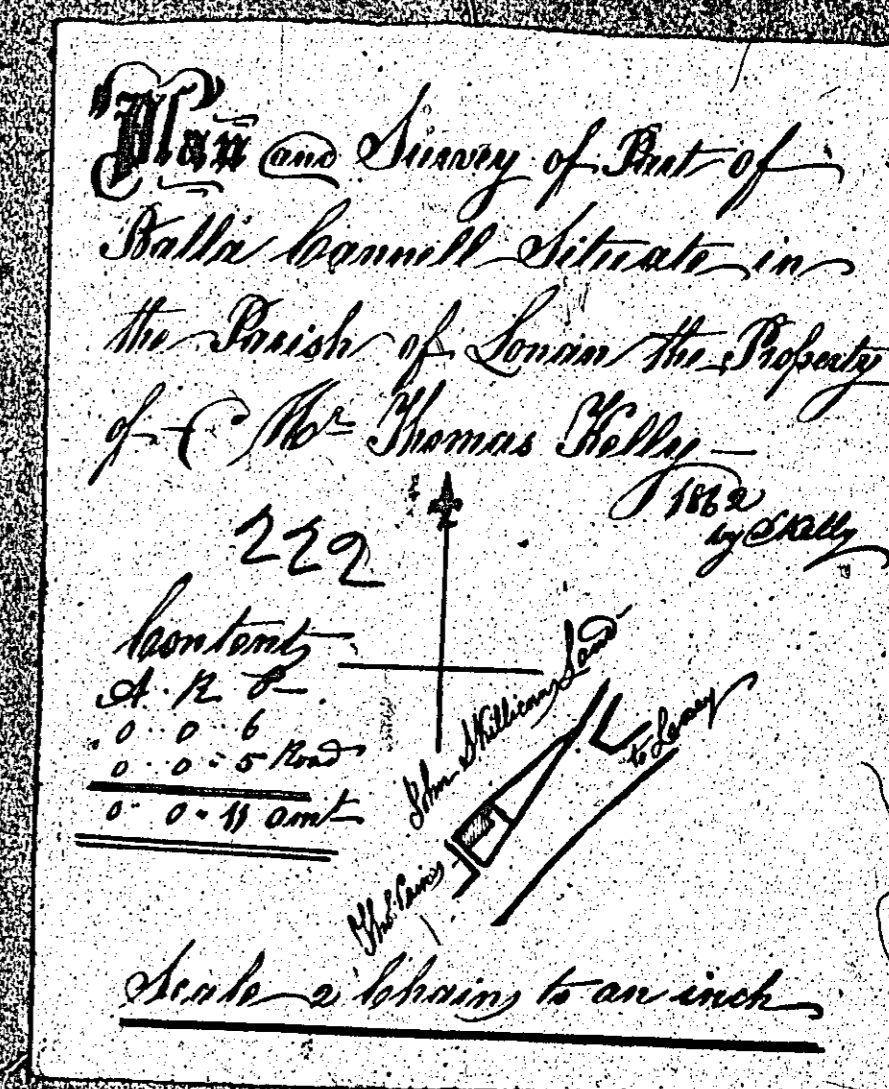
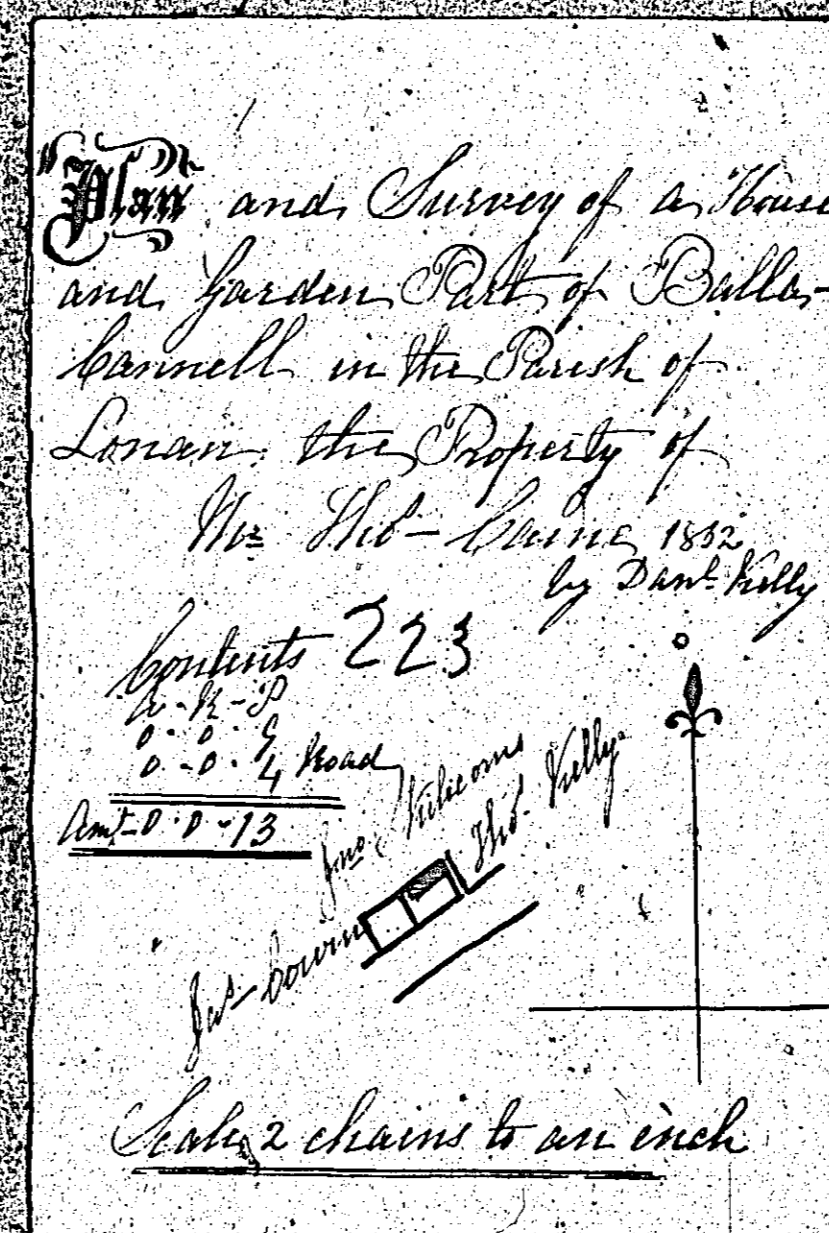
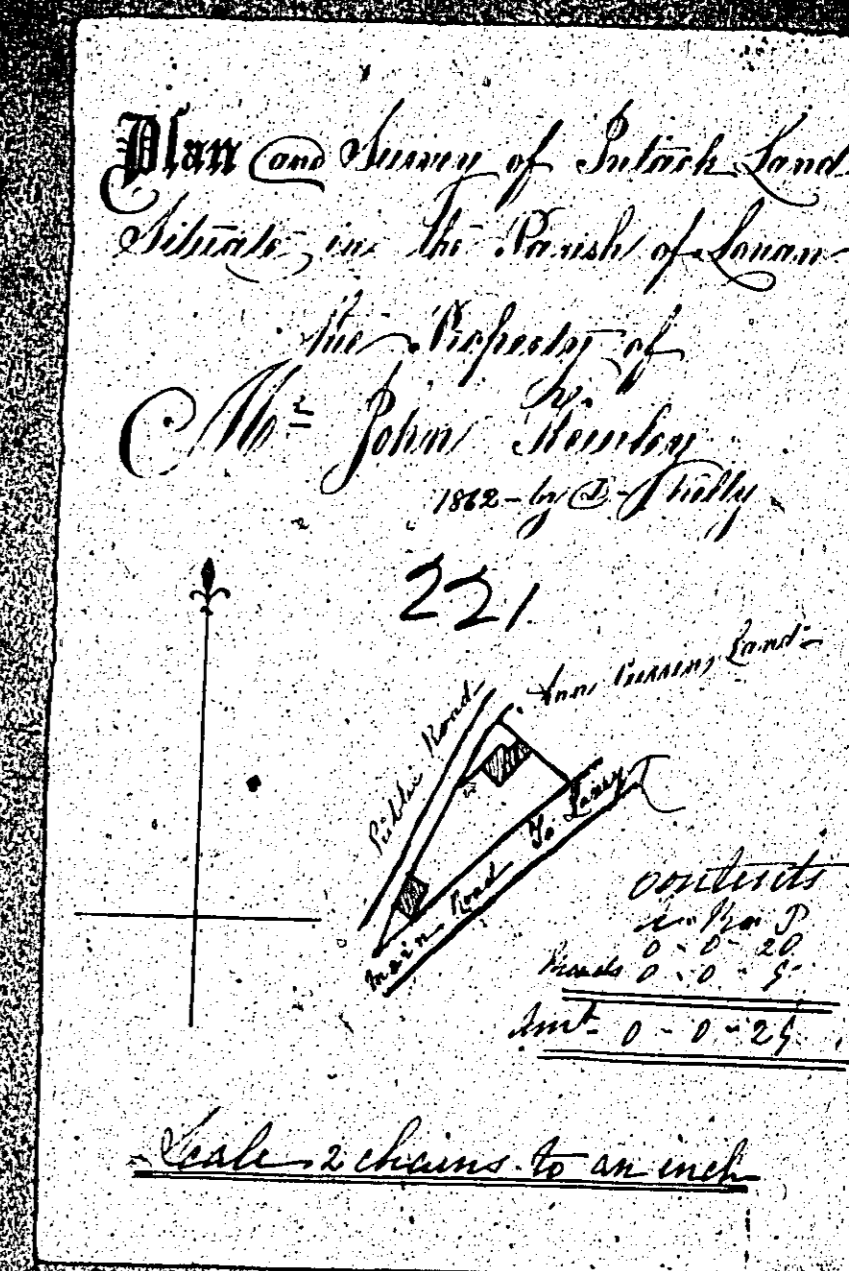
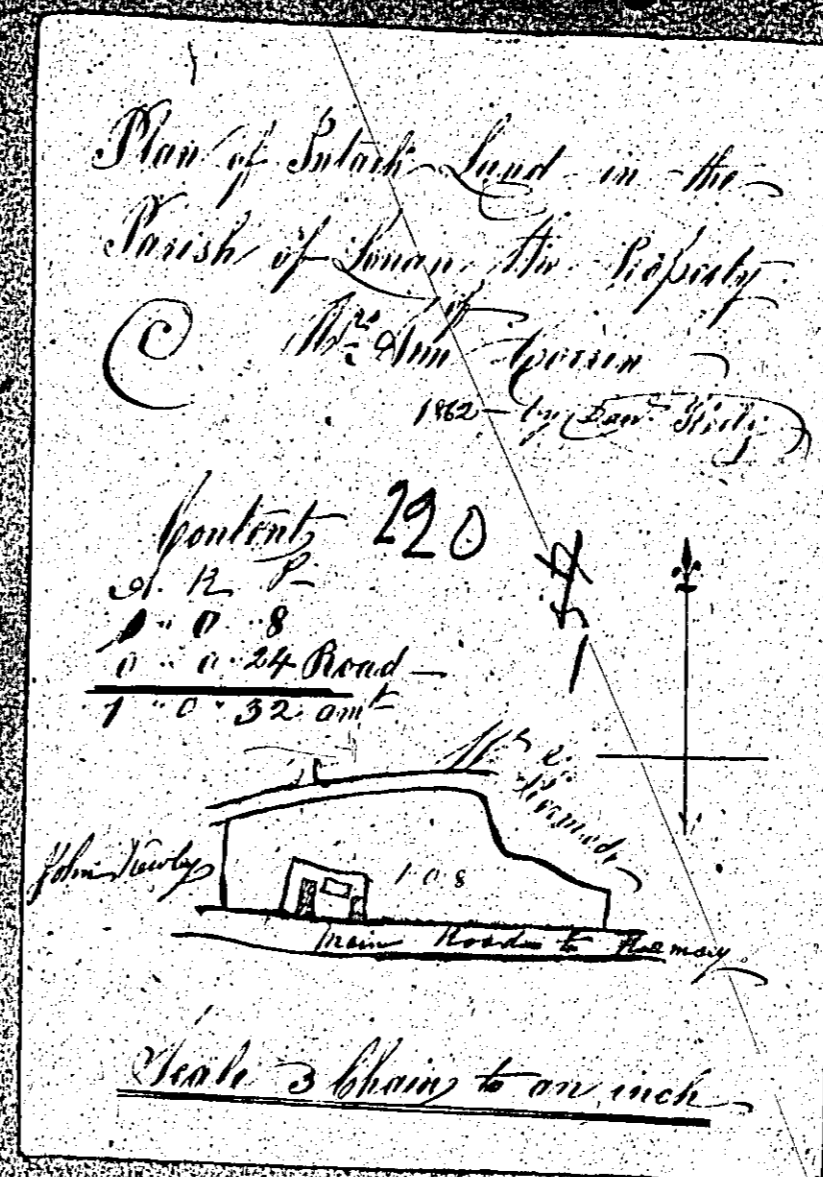


ISLE OF MAN GOVERNMENT: GENERAL REGISTRY

ASYLUM PLANS: PARISH OF LONAN

1:23

- 220 Original coloured
- 221 Original coloured
- 222 Original coloured (decorative)
- 223 Original coloured (decorative)
- 224 Original coloured

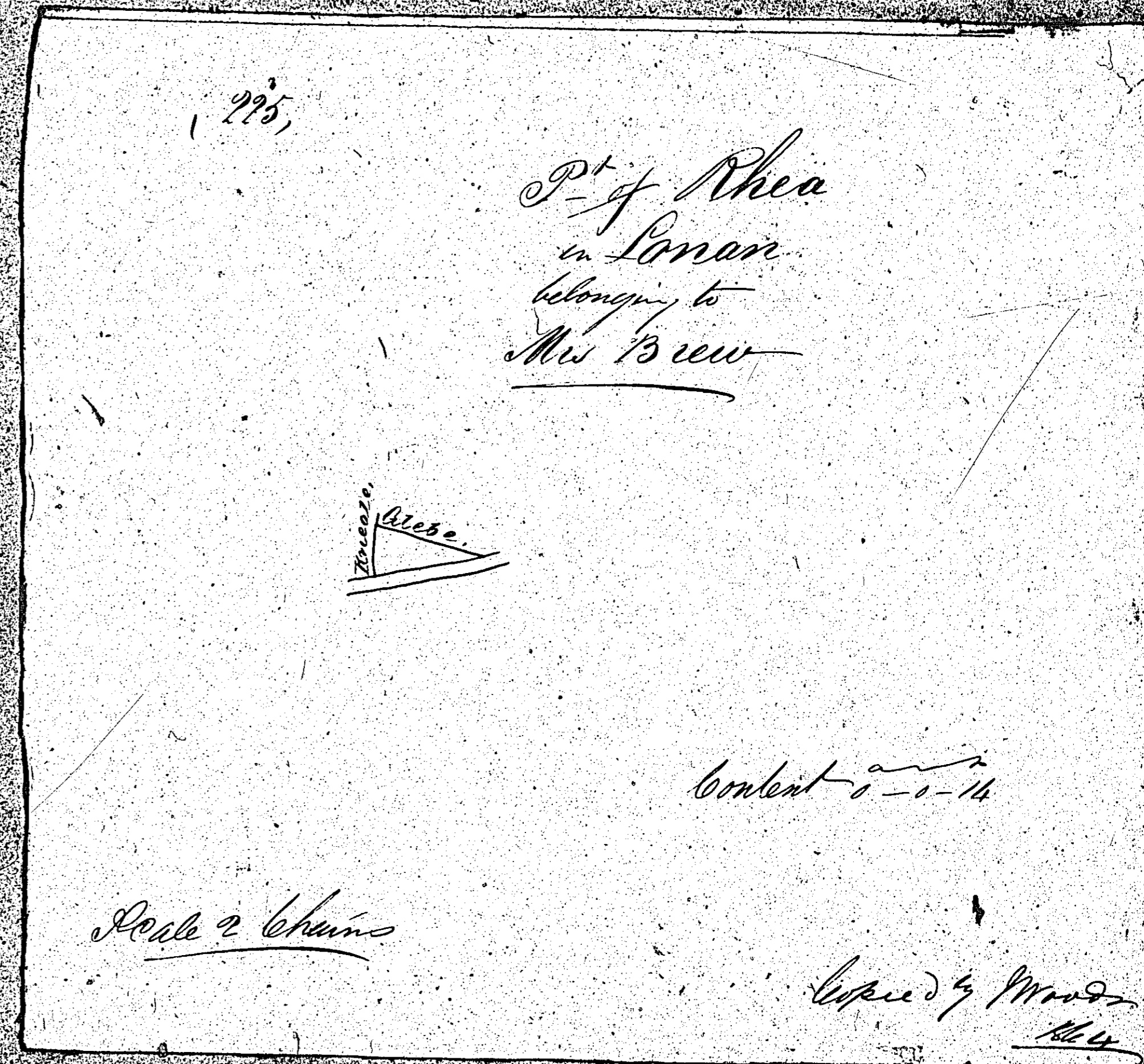


ISLE OF MAN GOVERNMENT: GENERAL REGISTRY

ASYLUM PLANS: PARISH OF LONAN

Original monotone

1:23



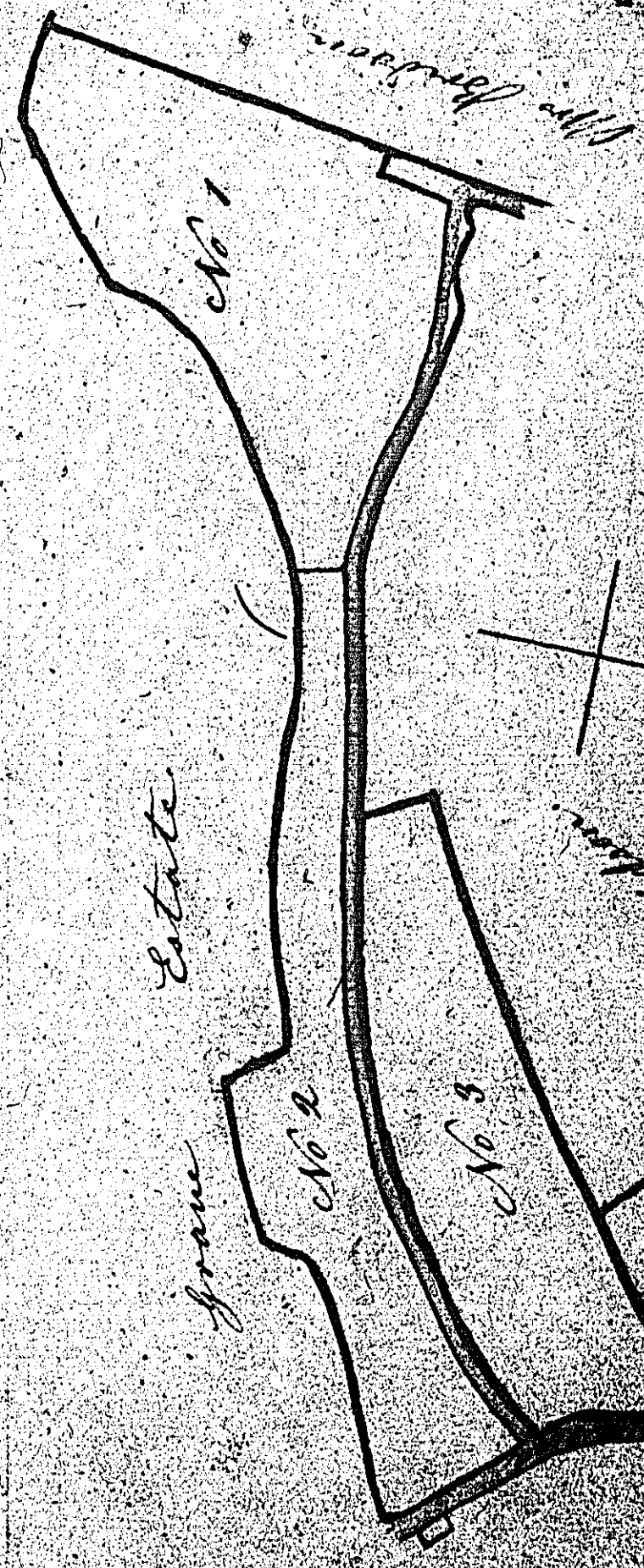
ISLE OF MAN GOVERNMENT: GENERAL REGISTRY

ASYLUM PLANS: PARISH OF LONAN

Original coloured

1:23

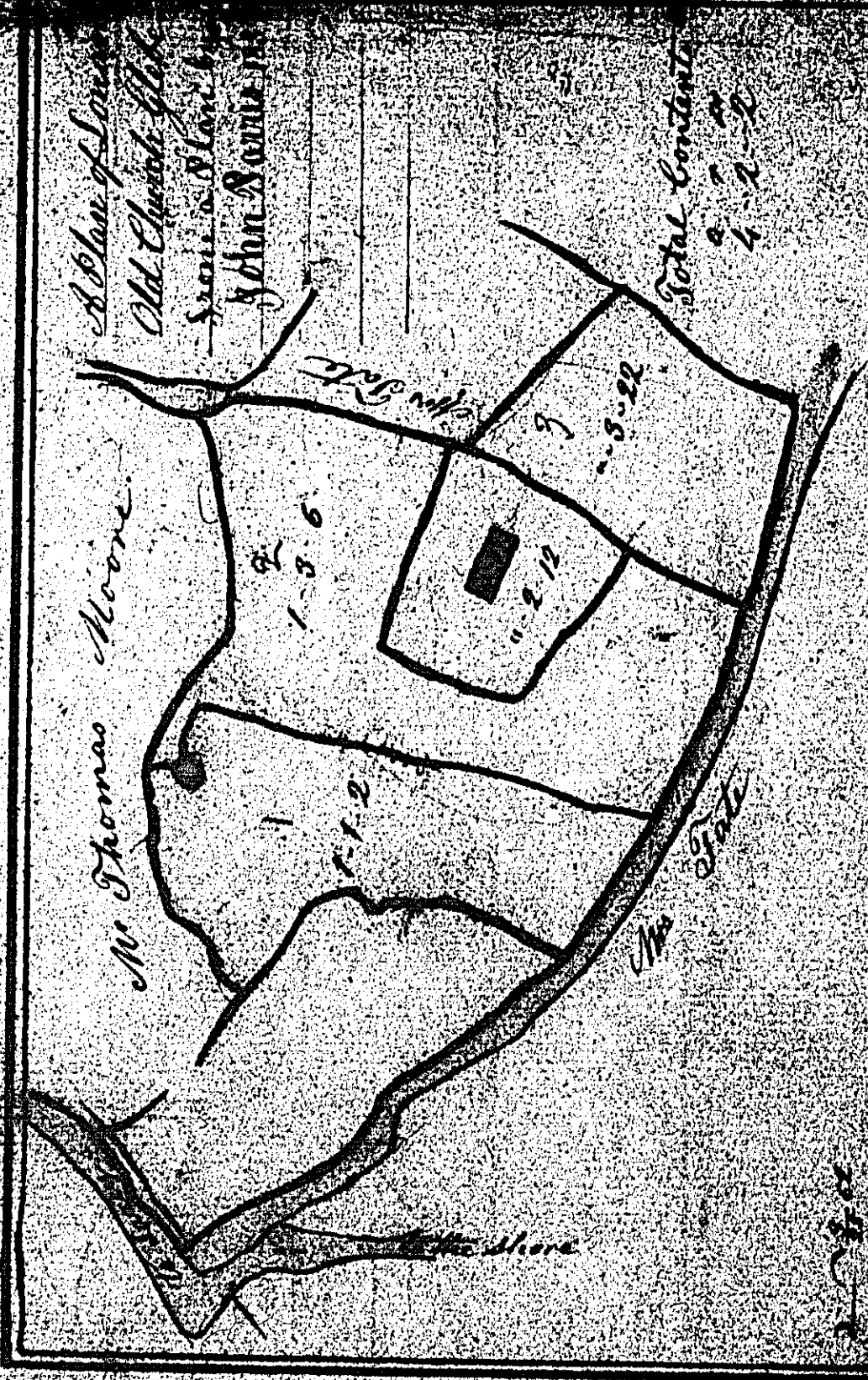
*A Plan of the Parish of Lonan now Church Glebe.*



Reference

No. 1	Access Road, Church	1	8.87
No. 2	including road	1	2.12
No. 3		1	2.19
No. 4		2	1.11
	5. The Rectory and outflow		26
	6. The Rectory house	2	1
	Public Land	7	1.20
	<b>Total contents</b>		<b>38.6</b>

226



*Abbeys Lane  
Old Chapel  
John Moore*

*Total contents  
22.2*

ISLE OF MAN GOVERNMENT: GENERAL REGISTRY

ASYLUM PLANS: PARISH OF LONAN

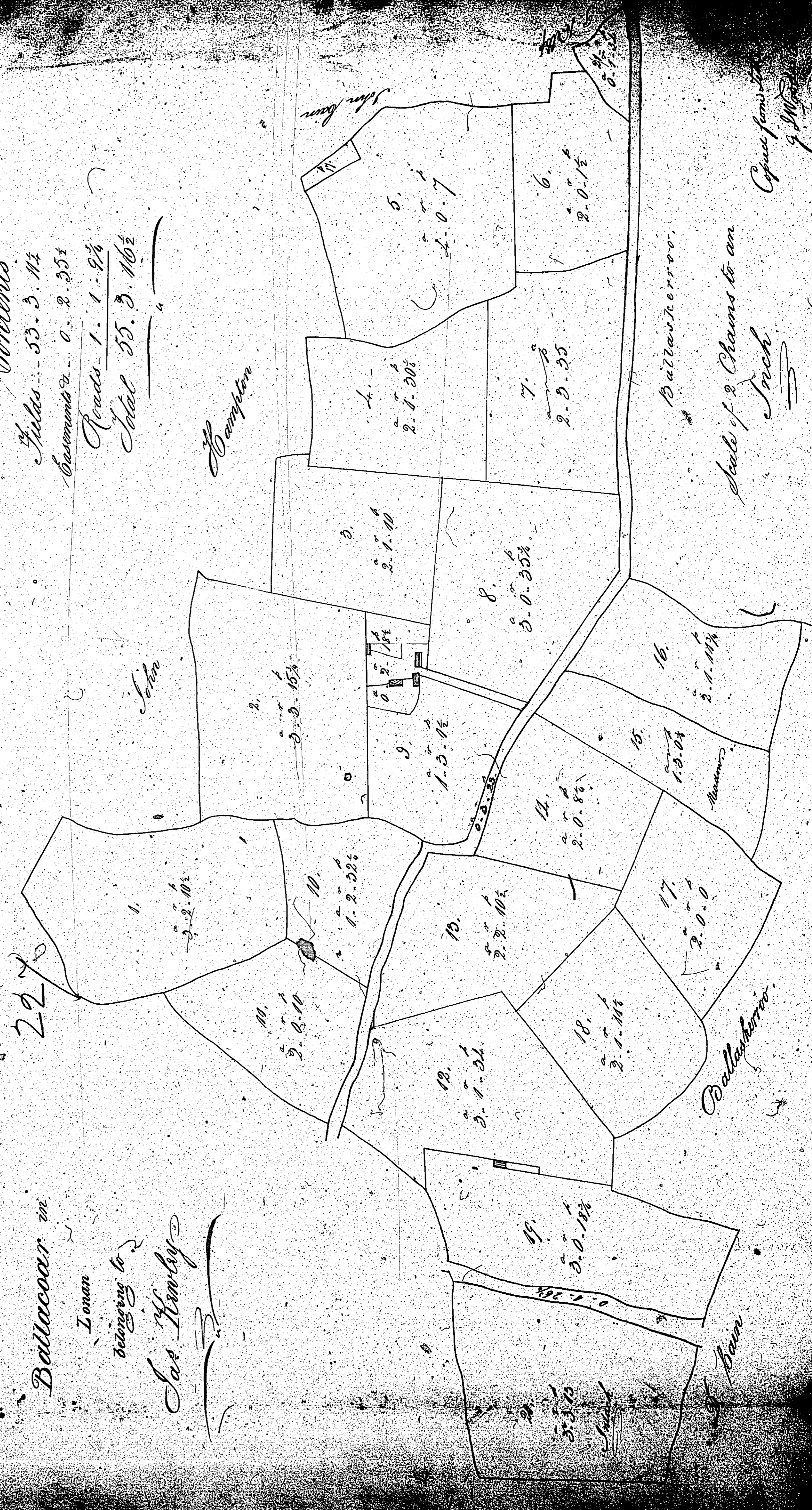
Original coloured (decorative)

1:23

*Contents*  
*Fields 53.3.11½*  
*Lawms 0 2.35½*  
*Roads 1.1.9½*  
*Total 55.3.16½*

*2270*

*Ballacooir vii*  
*Lonan*  
*designing by*  
*Geo. H. H. H. H.*



*Ballacooir*  
*Scale of 2 Chains to an Inch*  
*Geo. H. H. H.*

ISLE OF MAN GOVERNMENT: GENERAL REGISTRY

ASYLUM PLANS: PARISH OF LONAN

Original coloured

1:23

