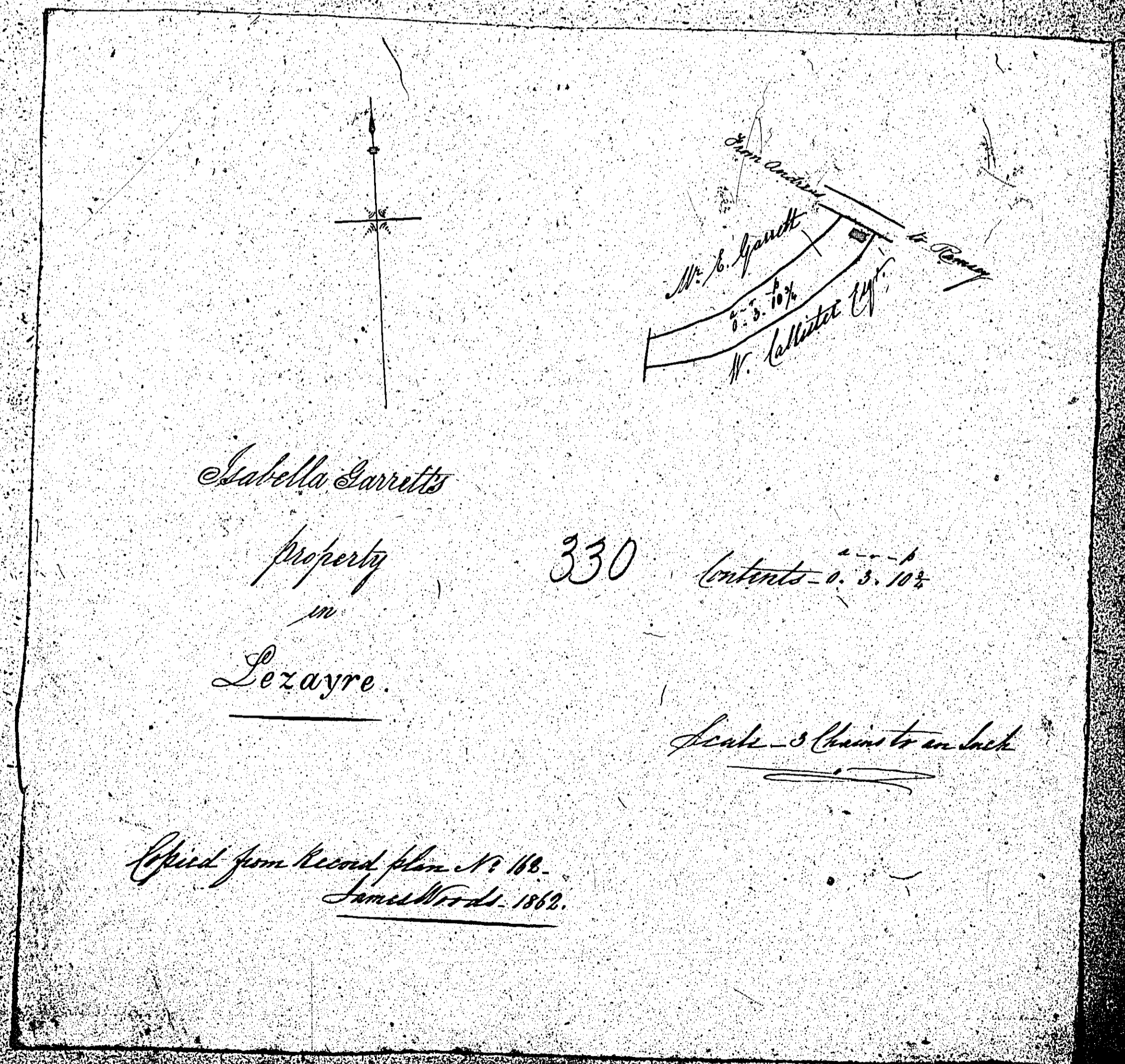
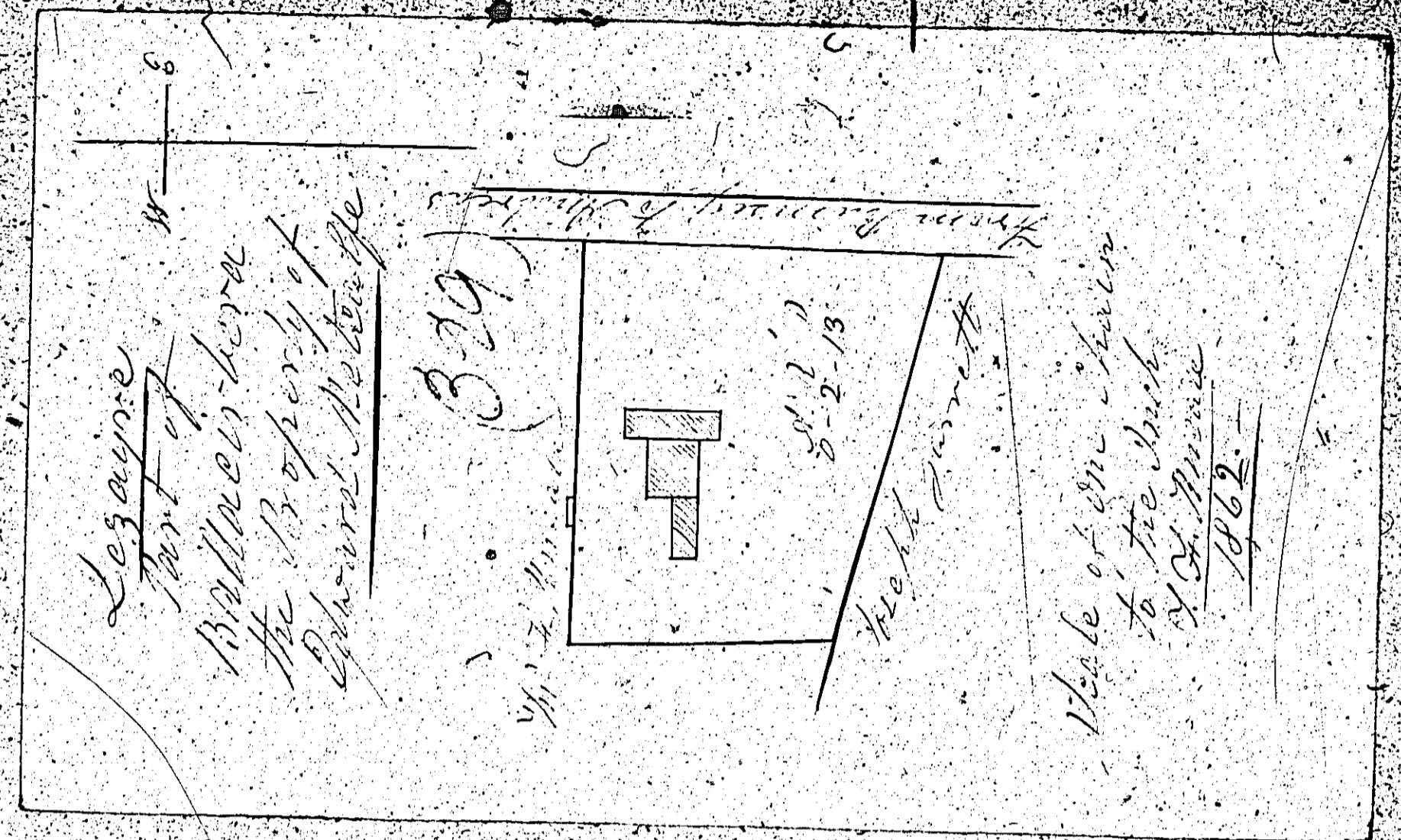


ISLE OF MAN GOVERNMENT: GENERAL REGISTRY

ASYLUM PLANS: PARISH OF LEZAYRE

Originals monotone

1:23

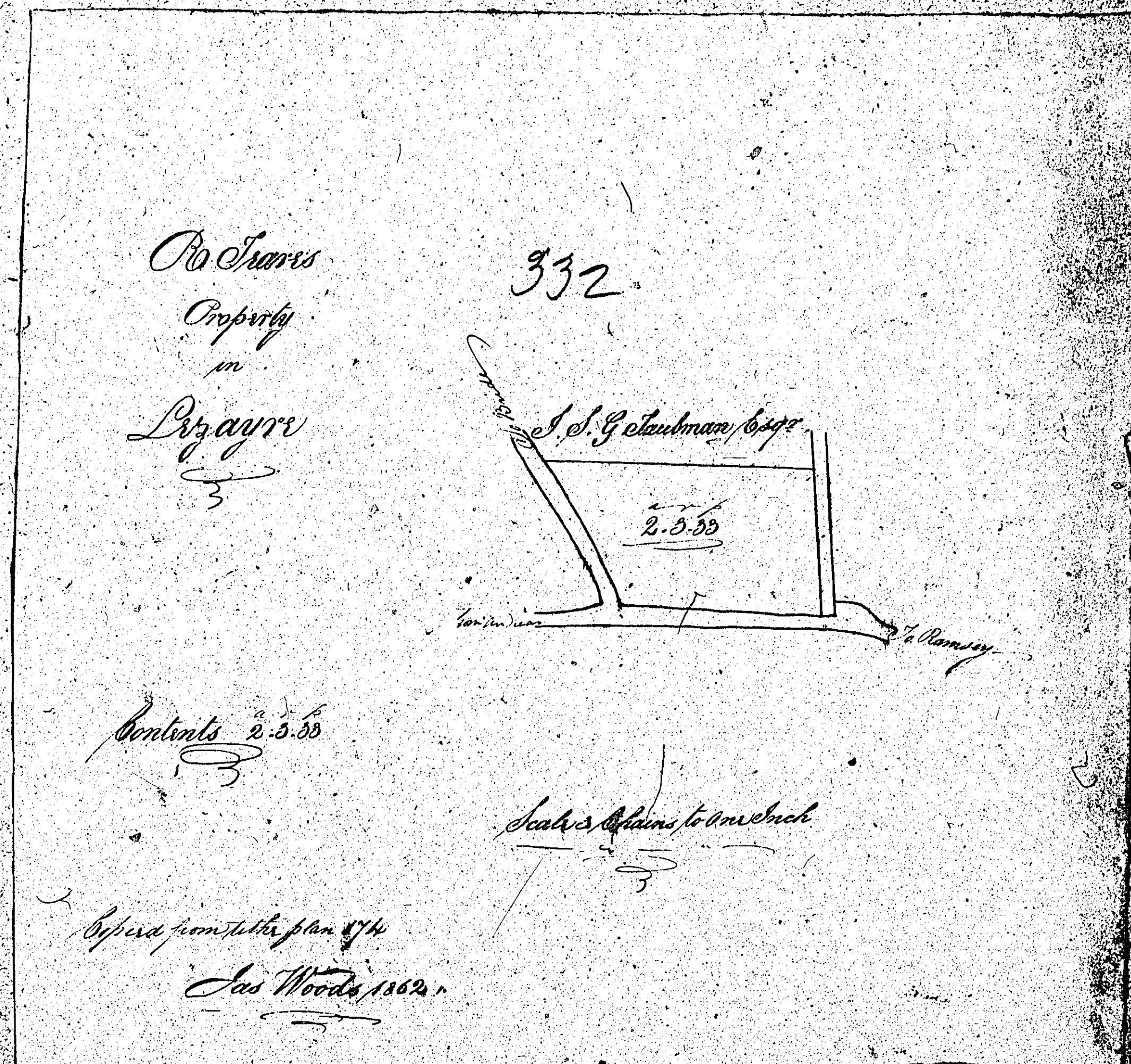
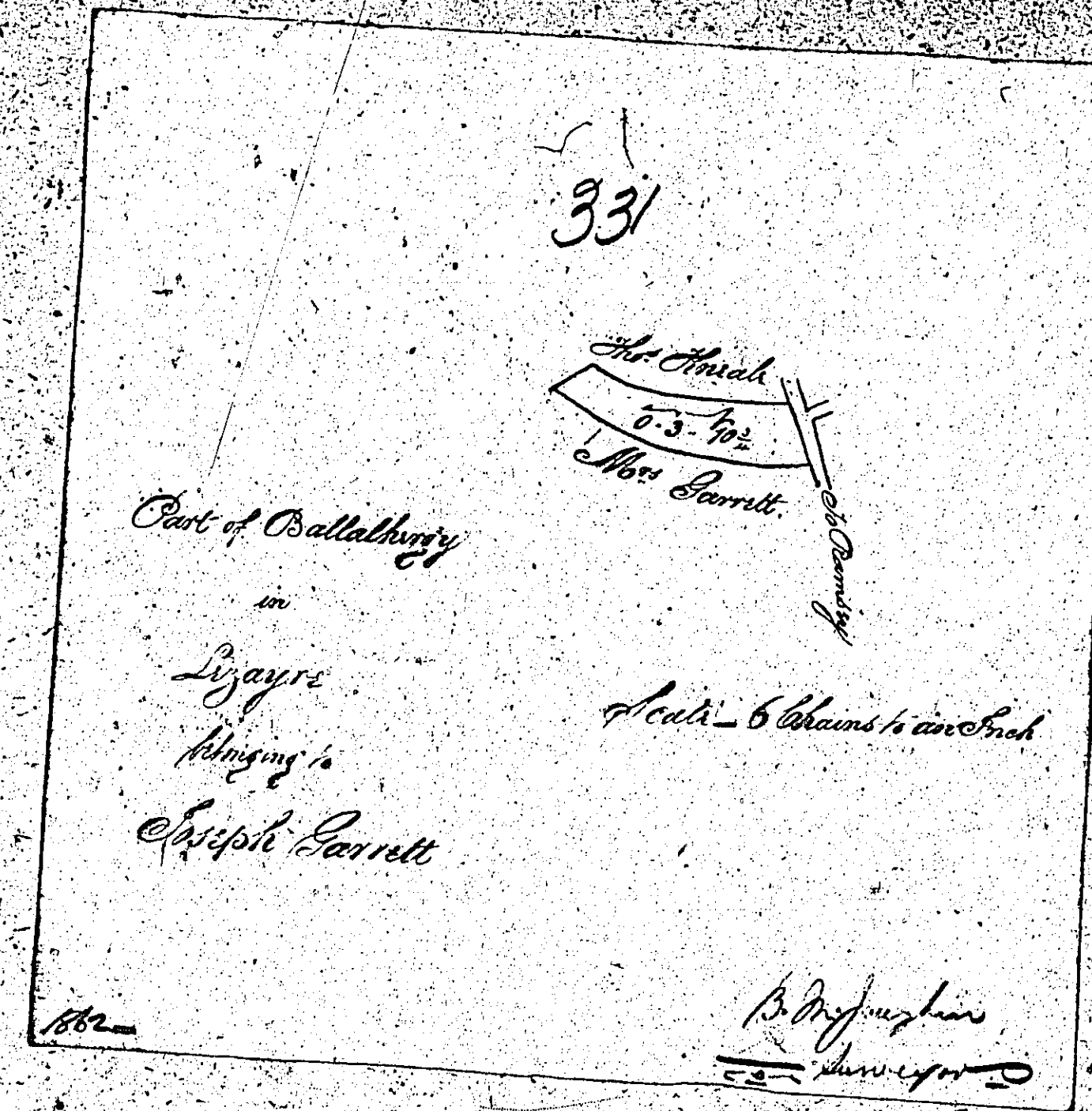


ISLE OF MAN GOVERNMENT: GENERAL REGISTRY

ASYLUM PLANS: PARISH OF LEZAYRE

Originals monotone

1:23



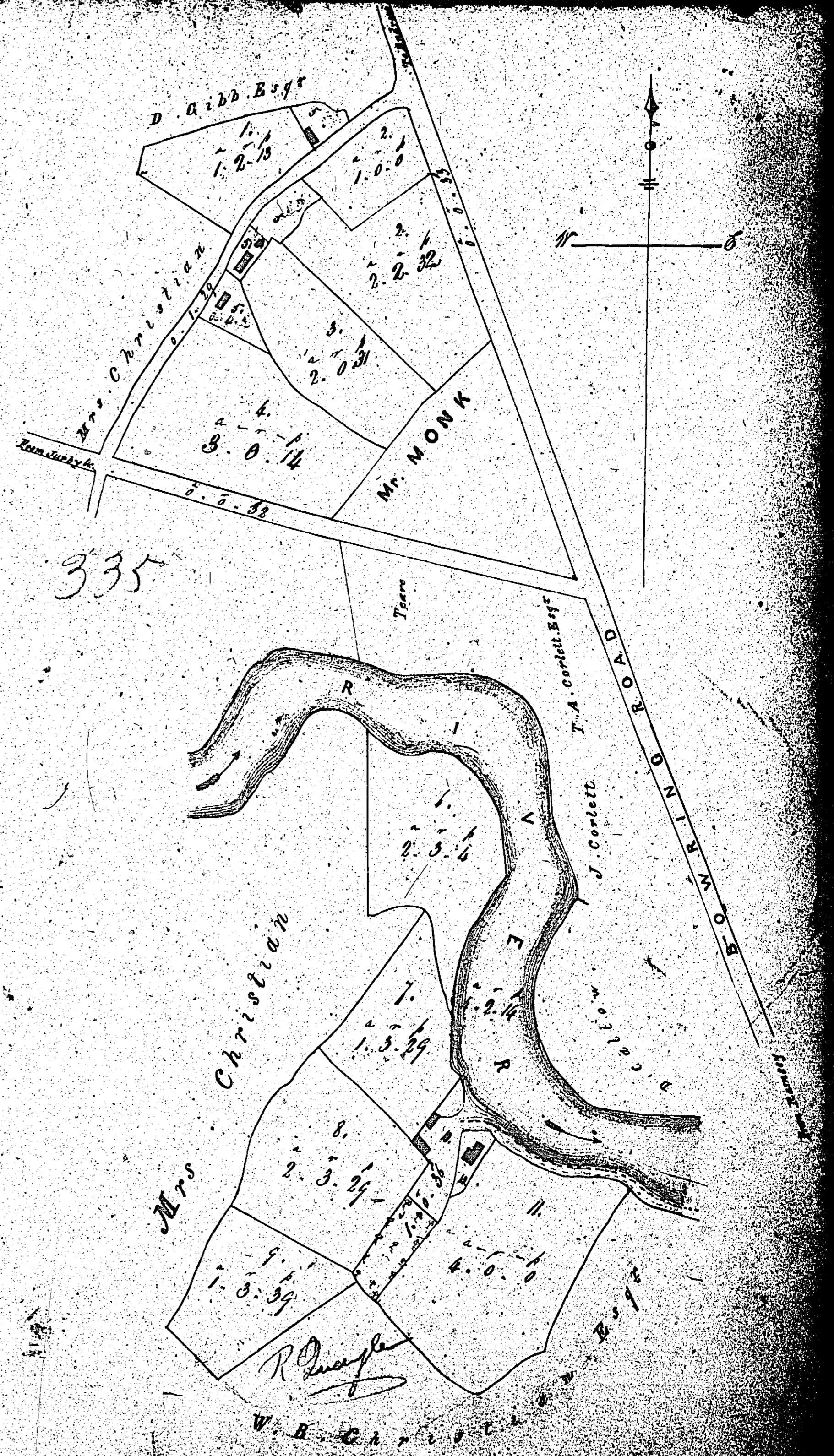


ISLE OF MAN GOVERNMENT: GENERAL REGISTRY  
 ASYLUM PLANS: PARISH OF LEZAYRE

Original monotone

1:23

*Plan of*  
*part of*  
*Ballachrink*  
 (M)  
 LEZAYRE  
*and belonging to*  
*Mr. Thomas Vondy.*



*Contents*

No.	A	r	p
1	1	2	13
2	3	2	32
3	2	0	31
4	3	0	14
5 Houses & Enclosures	0	3	12
6 Waste land	2	3	4
7	1	3	29
8	2	3	29
9	1	3	39
10	1	0	38
11	4	0	0
Buildings	26	0	39
Population of waste	0	3	14
Or river	4	2	14
Total	37	2	27

Scale of 5 Chains to an Inch.

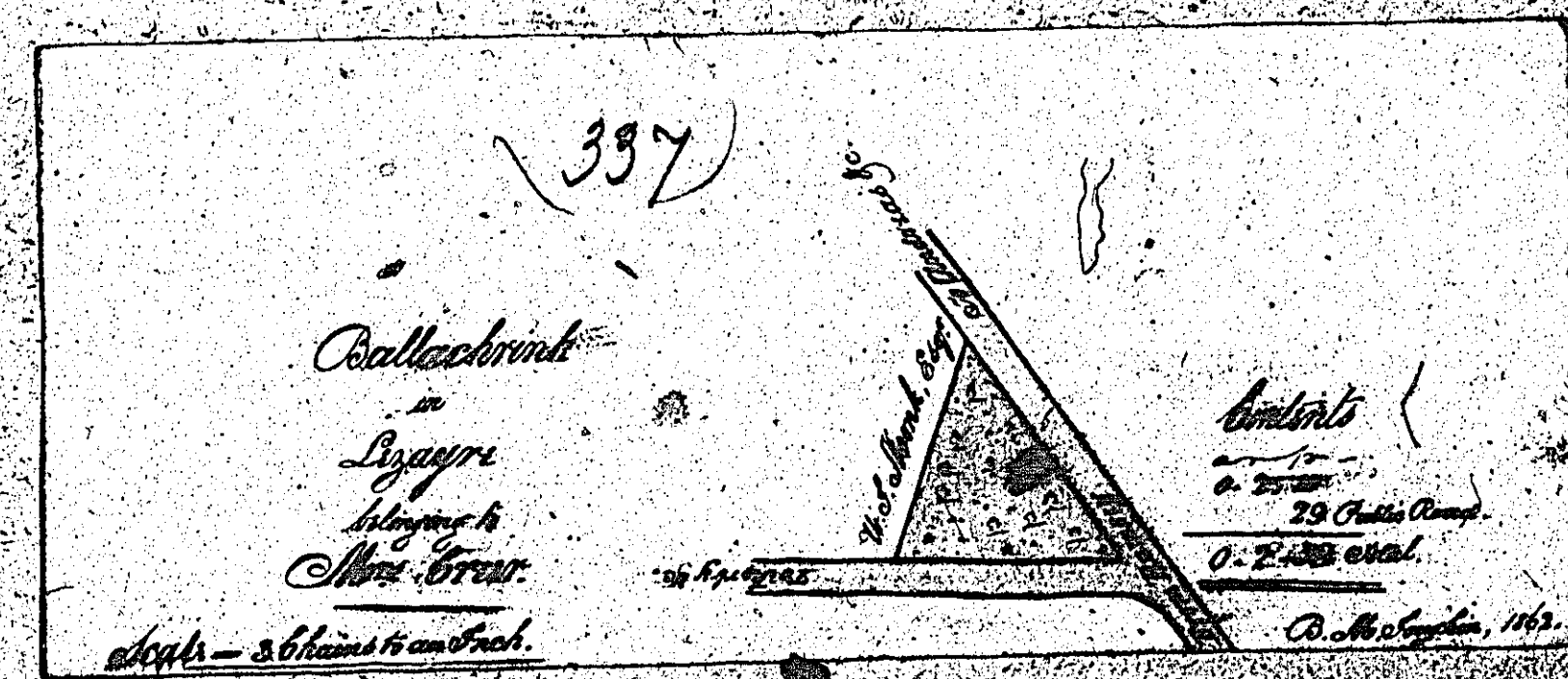
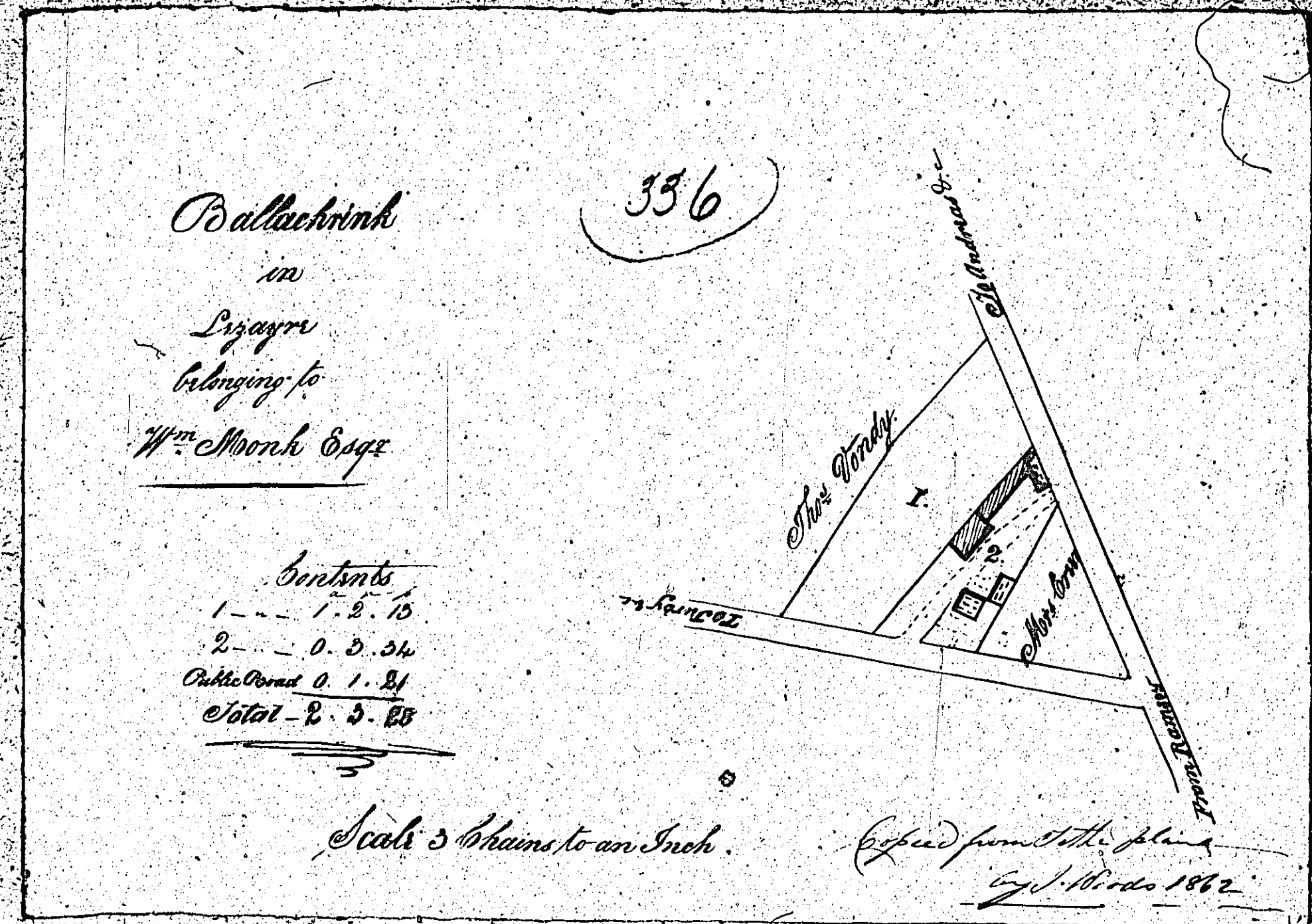
Drawn by Edw. Kelly 1839  
 and by J. Edwards 1862.

ISLE OF MAN GOVERNMENT: GENERAL REGISTRY

ASYLUM PLANS: PARISH OF LEZAYRE

- 336 Original monotone
- 337 Original coloured

1:23



ISLE OF MAN GOVERNMENT: GENERAL REGISTRY

ASYLUM PLANS: PARISH OF LEZAYRE

- 338 Original coloured
- 339 Original monotone

1:23

338

