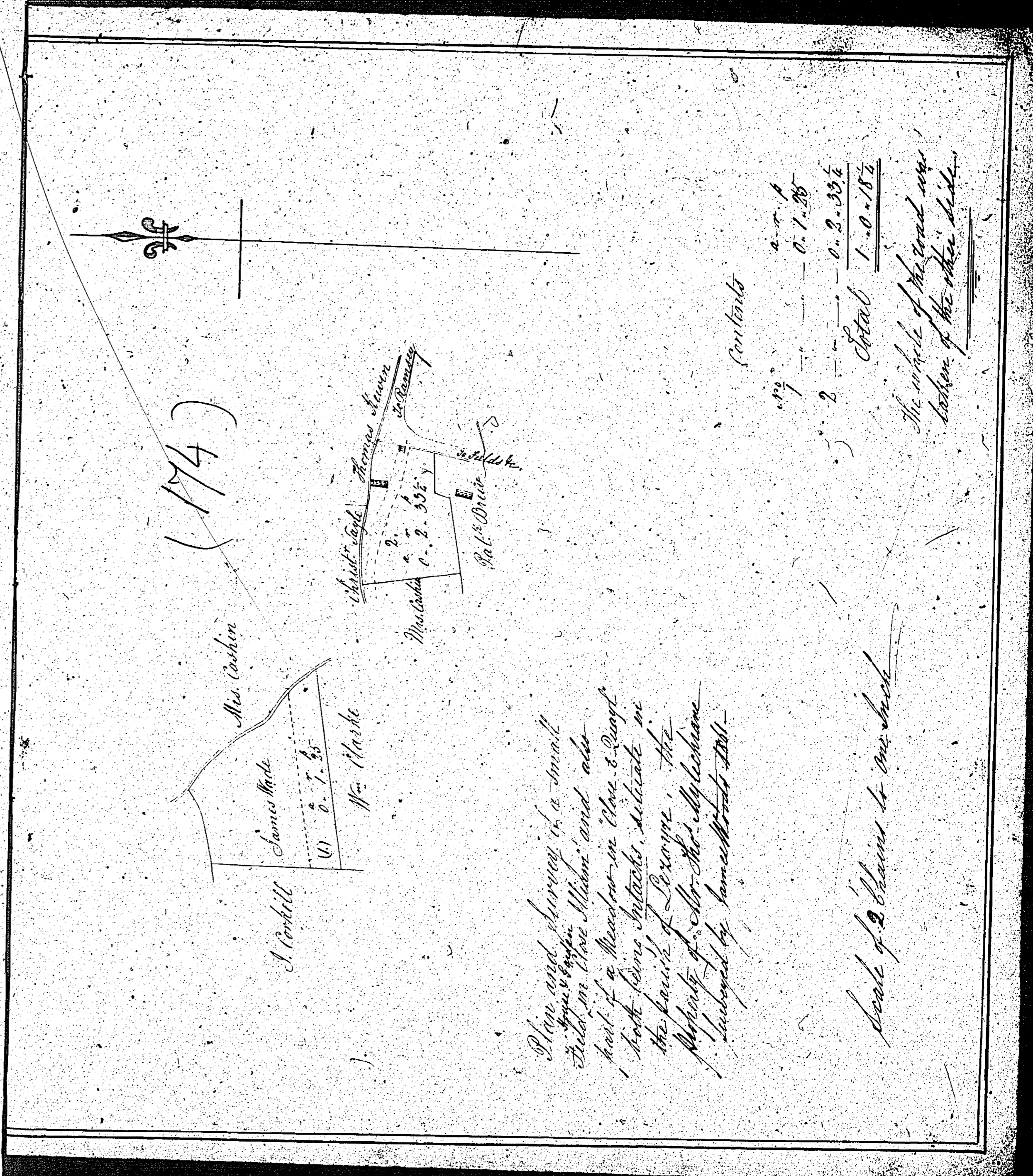


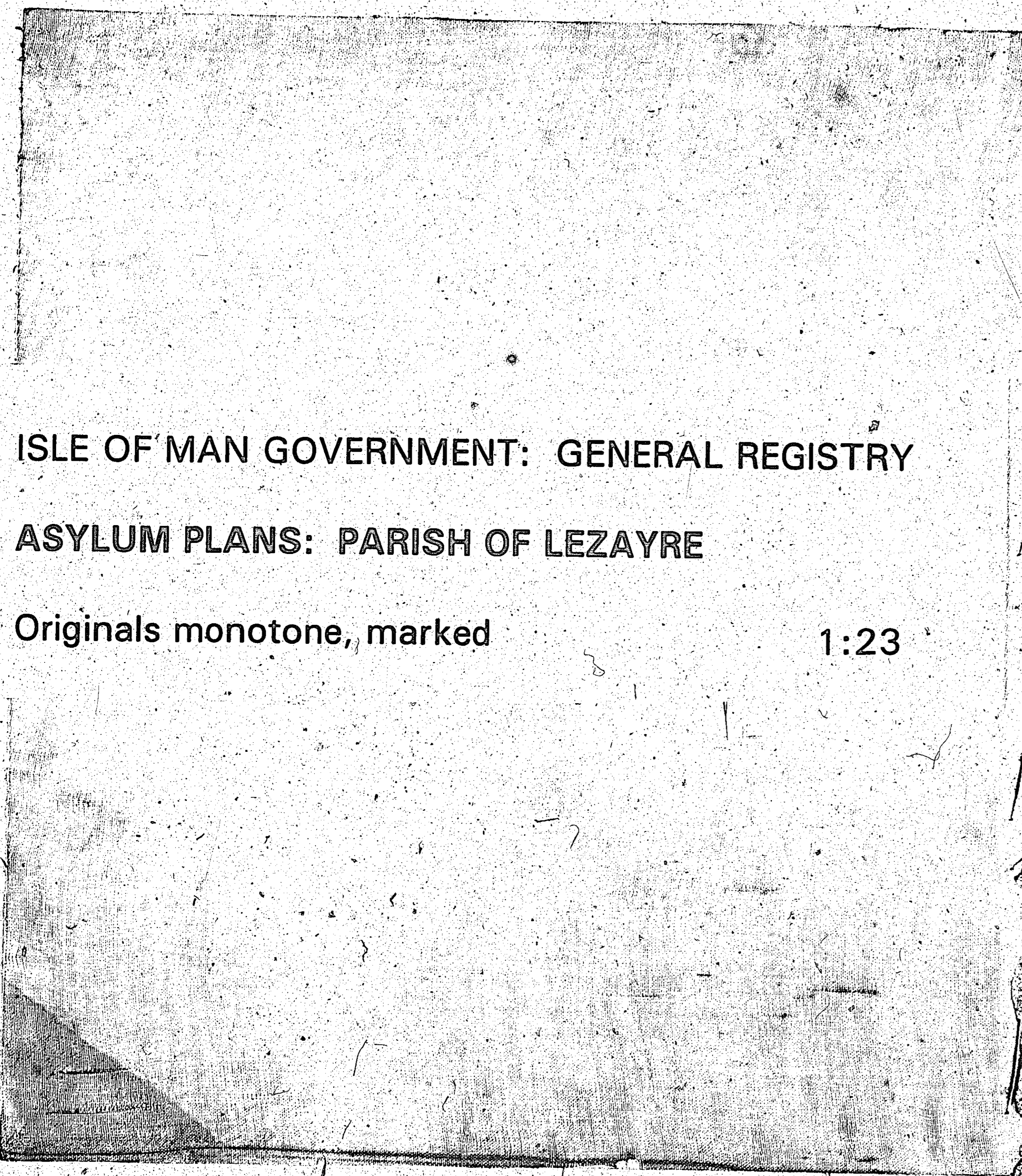
ISLE OF MAN GOVERNMENT: GENERAL REGISTRY

ASYLUM PLANS: PARISH OF LEZAYRE

Original monotone

1:23





ISLE OF MAN GOVERNMENT: GENERAL REGISTRY

ASYLUM PLANS: PARISH OF LEZAYRE

Originals monotone, marked

1:23

*A Plan and Survey of
a part of Elosey Chapel
Tintack in parish of
Lezayre the property
of John Wade Surveyors
taken May 1862
By James Merruish
(175)*

Scale 3 Chains to 1 Inch.

*A Plan and Survey of a
part of Cloac Quayle Tintack
in the parish of Lezayre
the property of Thomas Ameen
taken 1840 By James Merruish
this the 14th of April 1862*

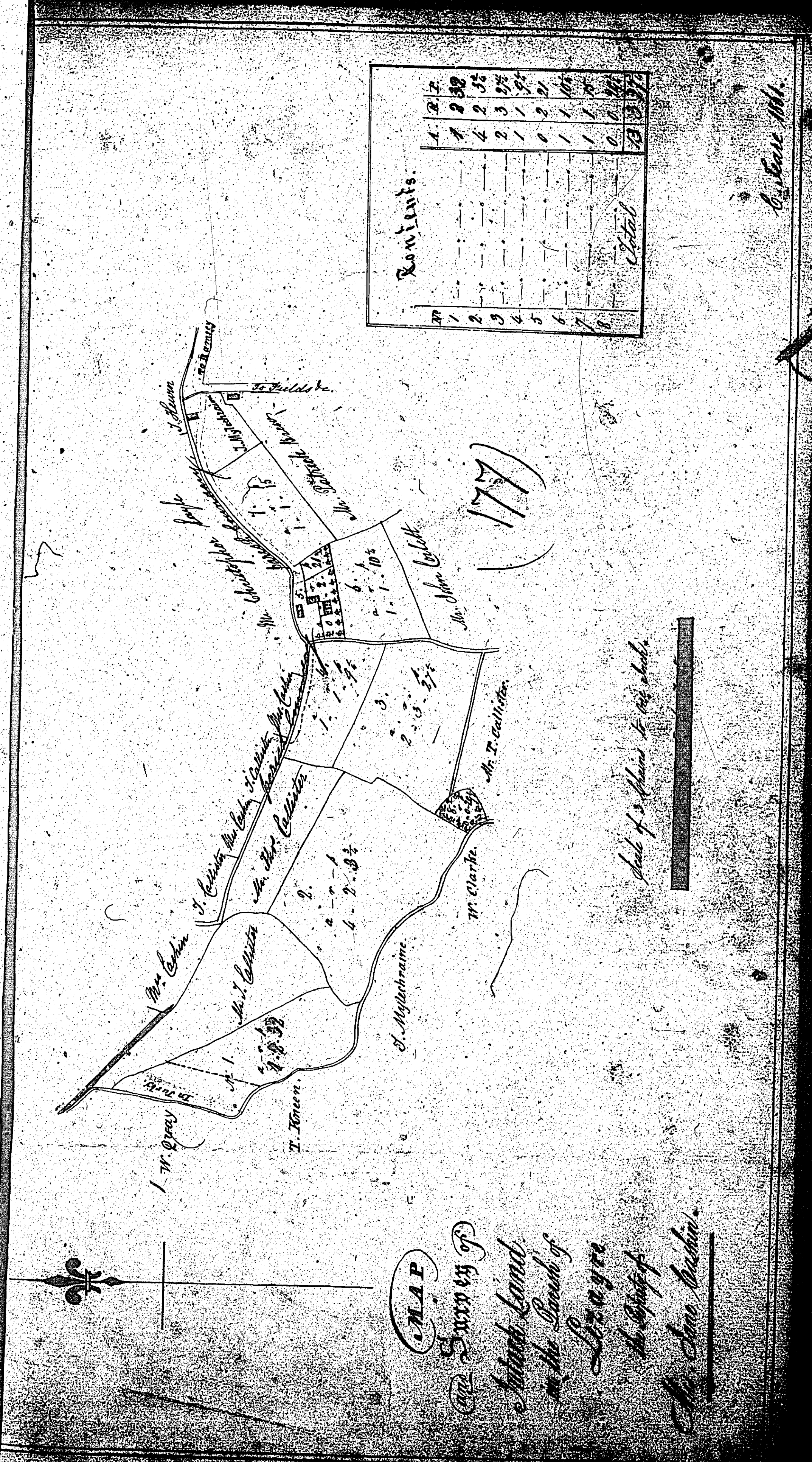
Scale 3 Chains to 1 Inch.

ISLE OF MAN GOVERNMENT: GENERAL REGISTRY

ASYLUM PLANS: PARISH OF LEZAYRE

Original coloured (decorative)

1:23



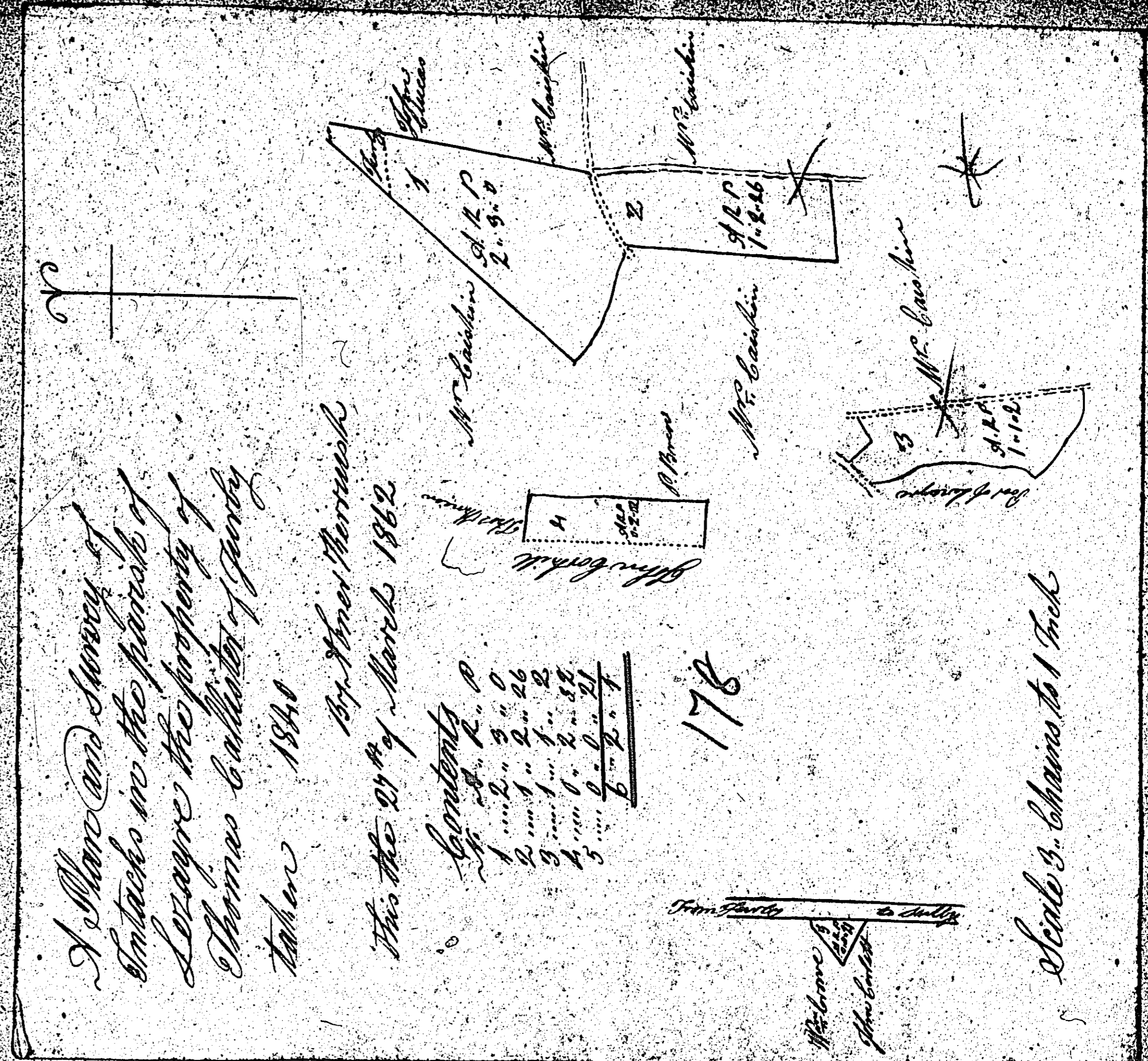
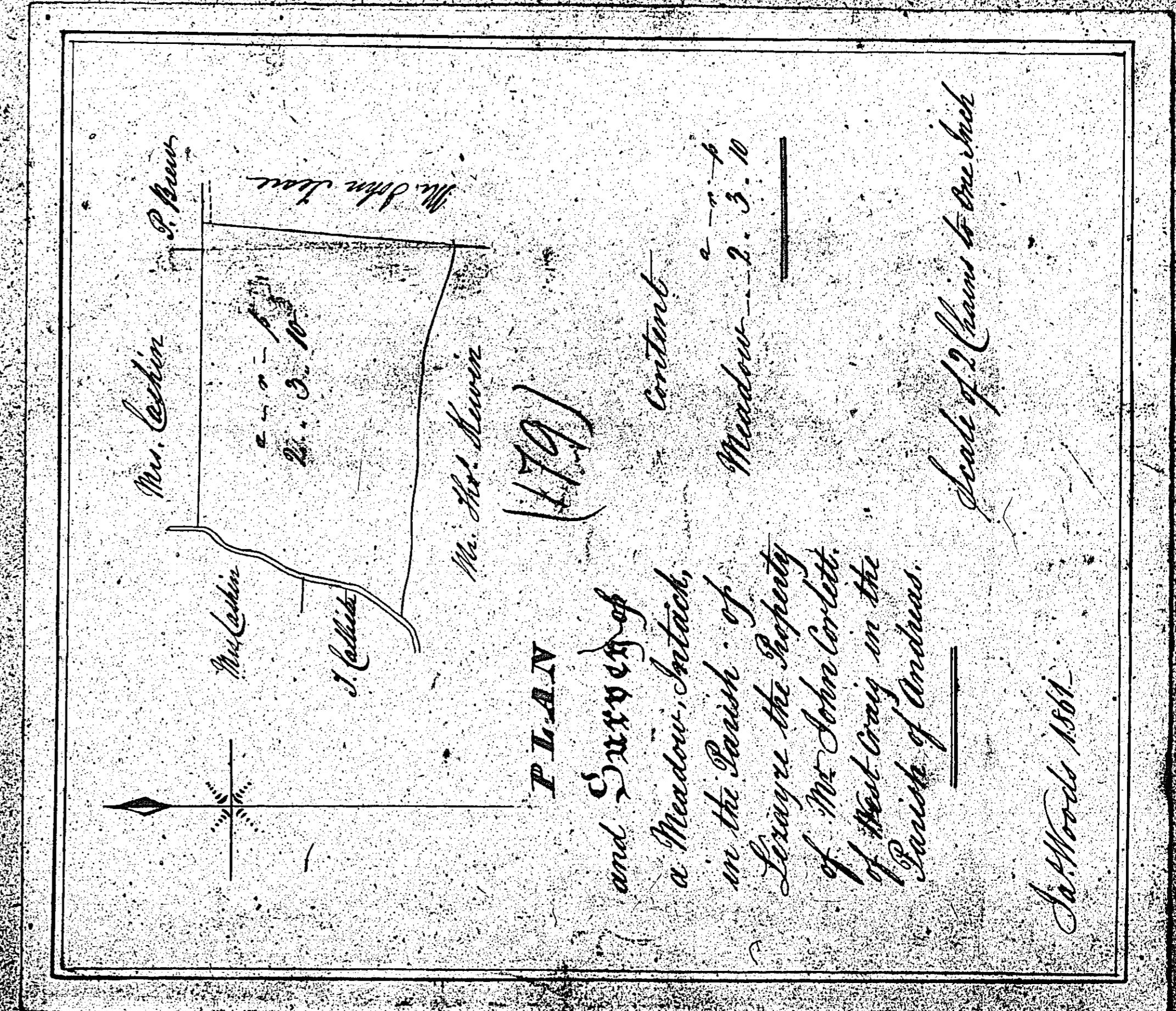
C. E. 1844

ISLE OF MAN GOVERNMENT: GENERAL REGISTRY

ASYLUM PLANS: PARISH OF LEZAYRE

Originals monotone, marked

1:23

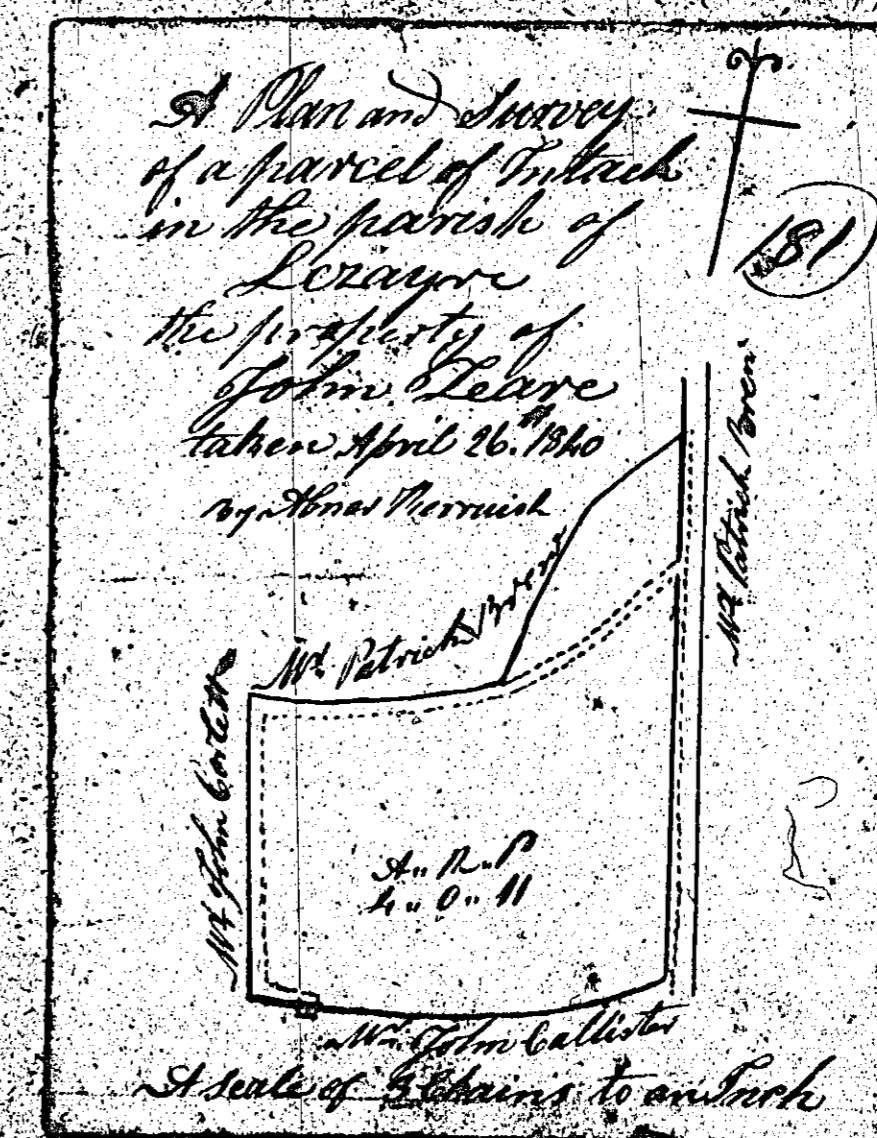
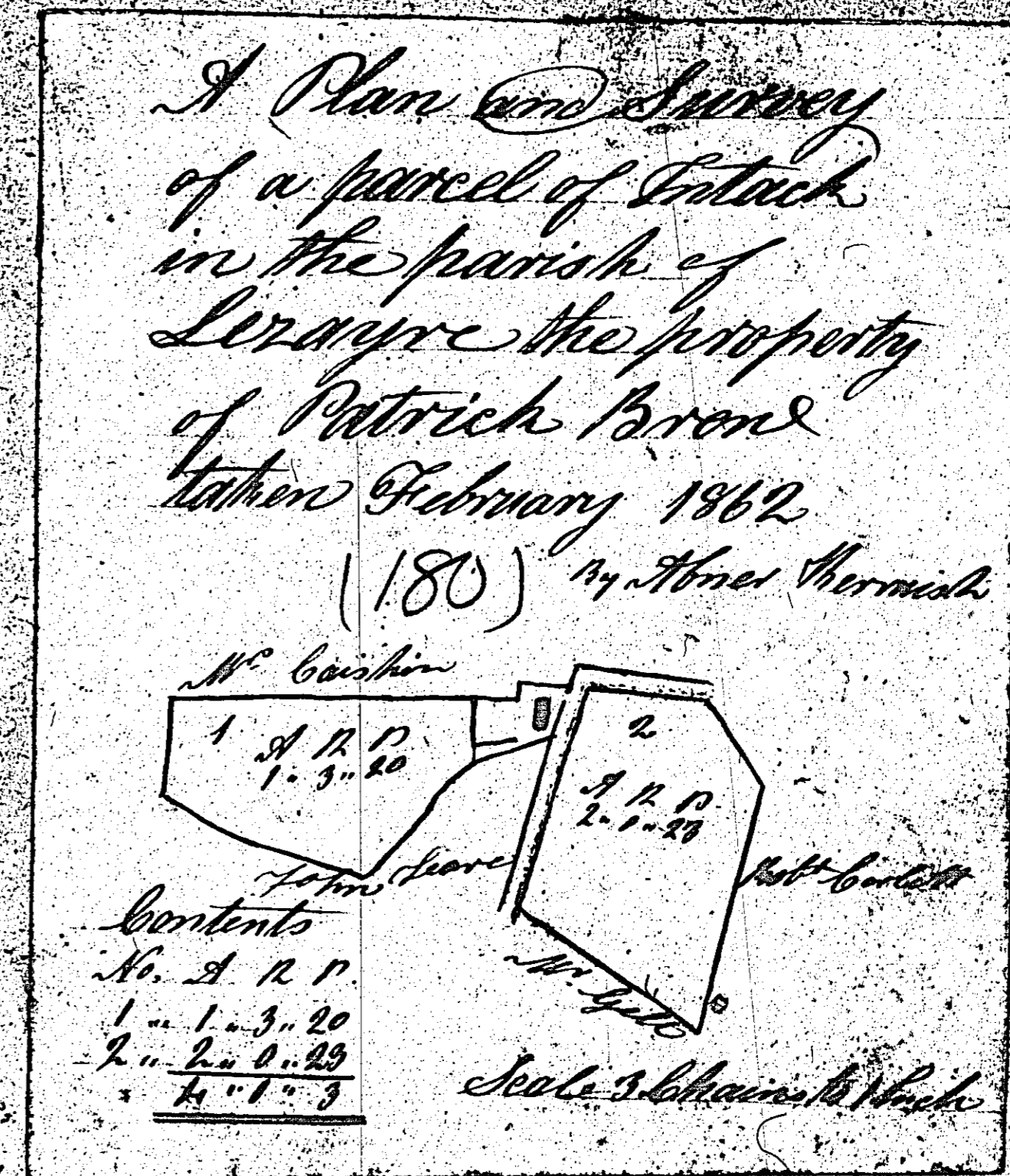


ISLE OF MAN GOVERNMENT: GENERAL REGISTRY

ASYLUM PLANS: PARISH OF LEZAYRE

Originals monotone

1:23



ISLE OF MAN GOVERNMENT: GENERAL REGISTRY

ASYLUM PLANS: PARISH OF LEZAYRE

Original monotone, marked

1:23

