

ISLE OF MAN GOVERNMENT: GENERAL REGISTRY

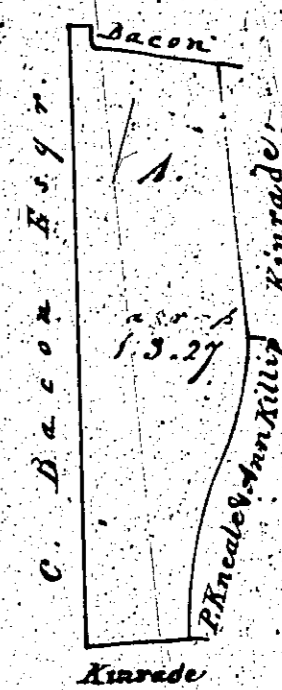
ASYLUM PLANS: PARISH OF LEZAYRE

Originals monotone

1:23

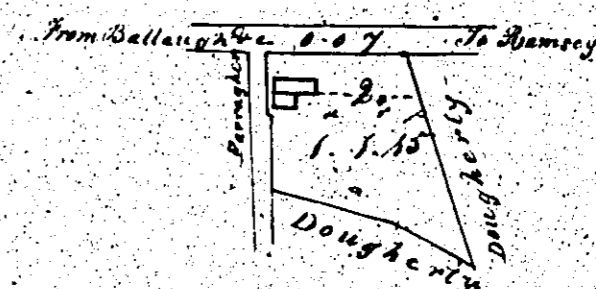
Plan
of part of the Quarterland of
Cooilbane
in the parish of
Lezayre
the property of
Miss Amelia Harrison

(89)



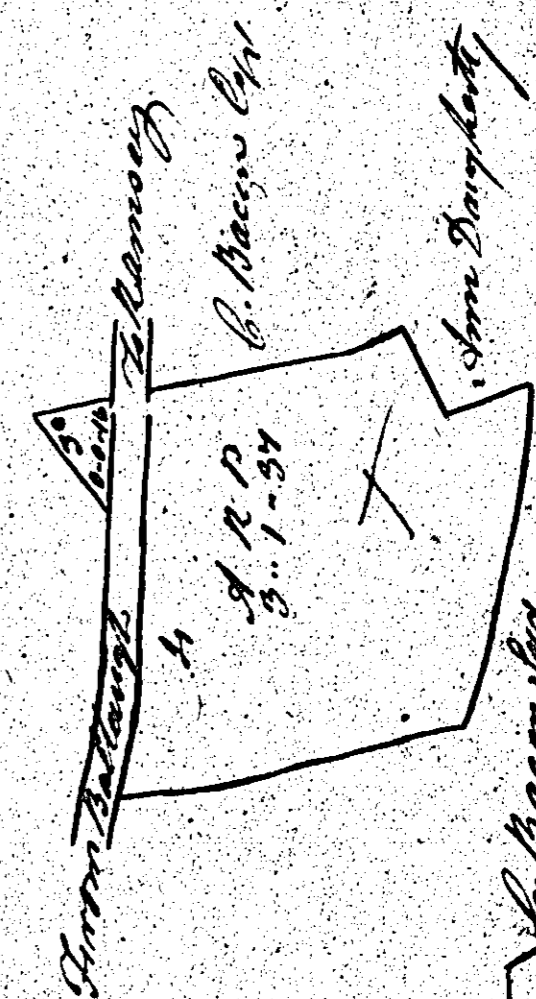
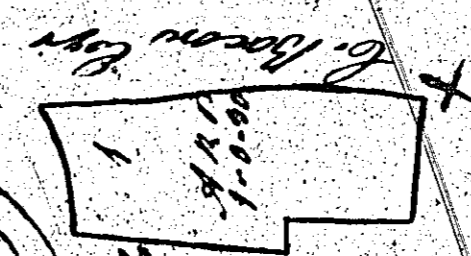
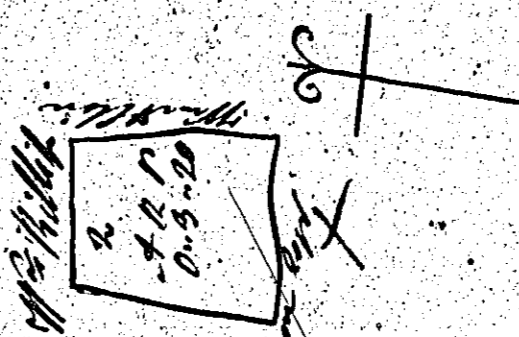
Contents

1	1.3.27
2	1.1.15
Road	0.0.7
Total	3.1.9



Scale of 3 Chains to One Inch

J. Woods
Surveyor 1862



Scale 3 Chains to 1 Inch

A Plan and Survey of a part of the
Cooilbane and Inshack in the parish
of Lezayre the property of Charles Dougherty
taken March 1862 by J. Woods Surveyor

Contents

1	1.3.27
2	1.1.15
3	0.5.20
4	1.1.15
5	1.3.27
Total	3.2.11

J. Woods

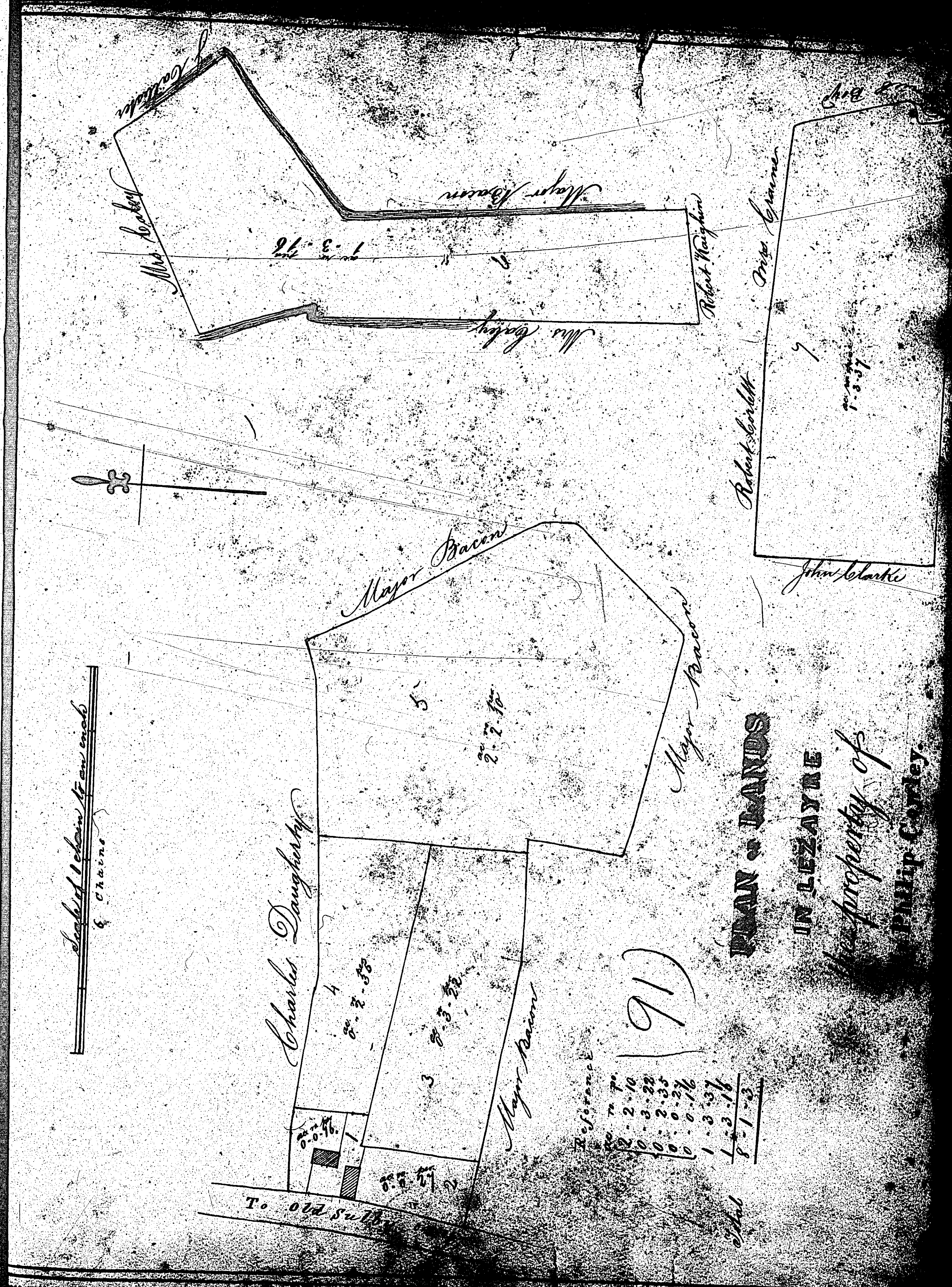
Phillips Surveyor

ISLE OF MAN GOVERNMENT: GENERAL REGISTRY

ASYLUM PLANS: PARISH OF LEZAYRE

Original monotone, marked

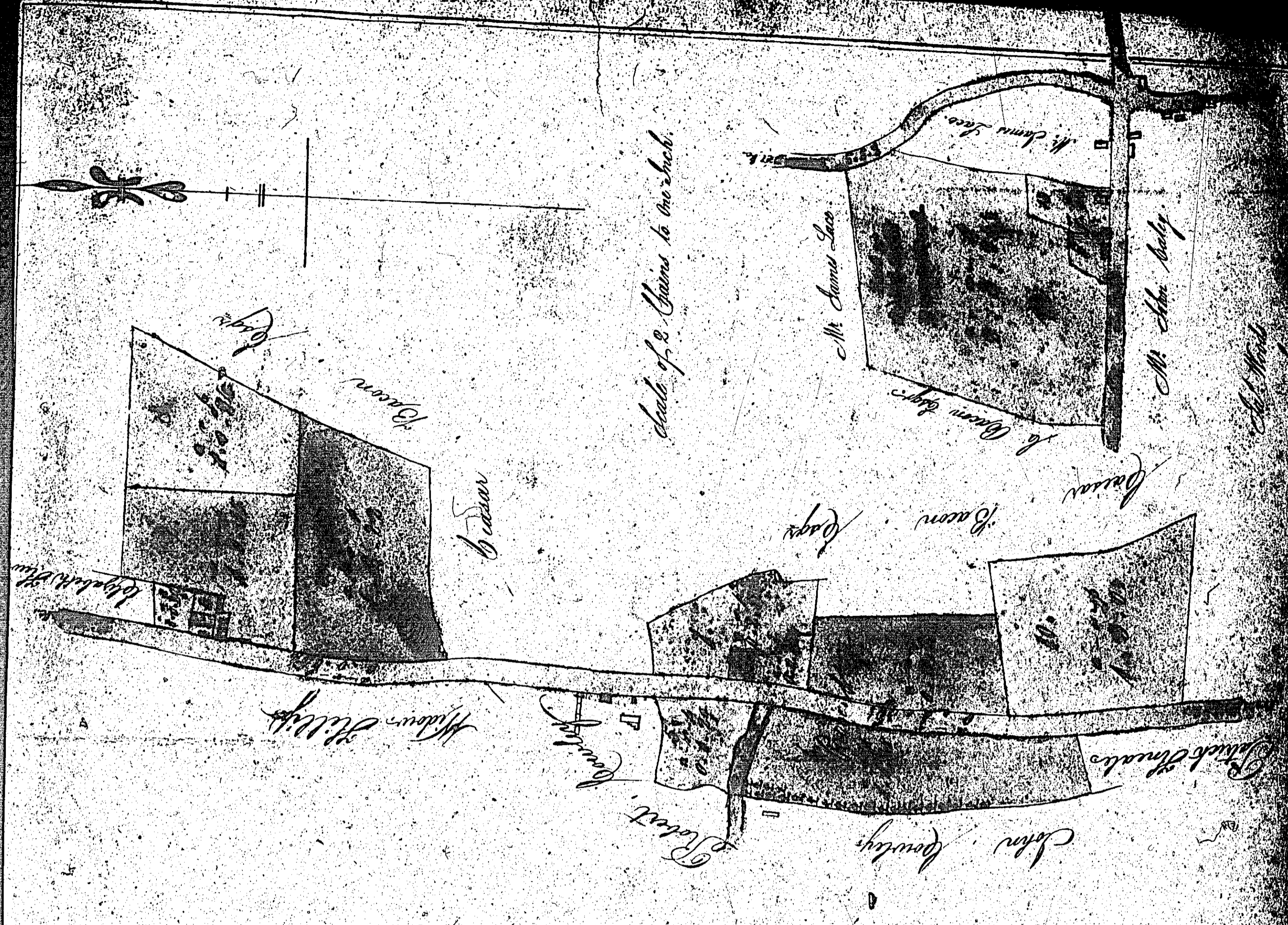
1:23



ISLE OF MAN GOVERNMENT: GENERAL REGISTRY
 ASYLUM PLANS: PARISH OF LEZAYRE

Original coloured

1:23



PLAN

of part of the Quarterland of the

CLEANAUGH &c.

in the Parish of

LEZAYRE

the Property of

Mrs. Jane Bowley.

(92)

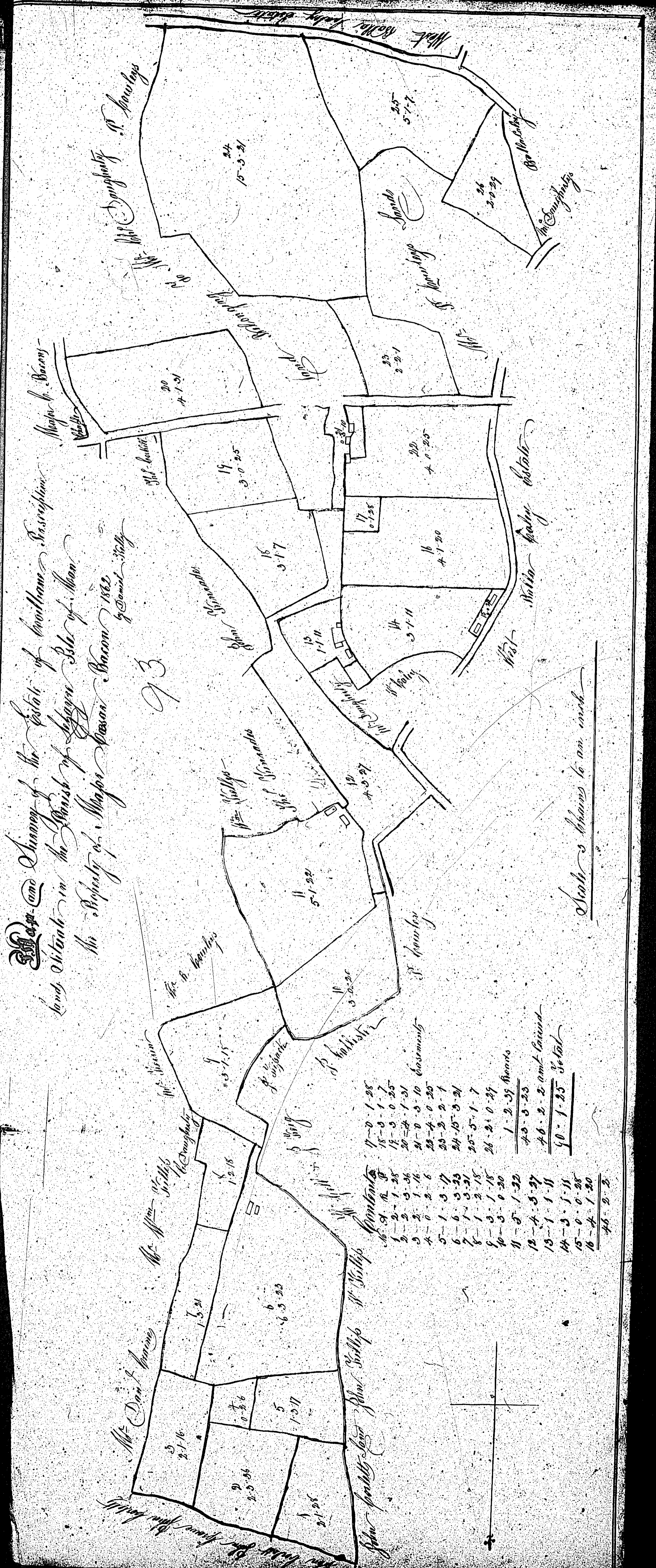
Contents	
1	Independent Accounts
2	—
3	—
4	—
5	—
6	—
7	—
8	—
9	—
10	—
11	—
12	—
13	—
14	—
15	—
16	—
17	—
18	—
19	—
20	—
21	—
22	—
23	—
24	—
25	—
26	—
27	—
28	—
29	—
30	—
31	—
32	—
33	—
34	—
35	—
36	—
37	—
38	—
39	—
40	—
41	—
42	—
43	—
44	—
45	—
46	—
47	—
48	—
49	—
50	—
51	—
52	—
53	—
54	—
55	—
56	—
57	—
58	—
59	—
60	—
61	—
62	—
63	—
64	—
65	—
66	—
67	—
68	—
69	—
70	—
71	—
72	—
73	—
74	—
75	—
76	—
77	—
78	—
79	—
80	—
81	—
82	—
83	—
84	—
85	—
86	—
87	—
88	—
89	—
90	—
91	—
92	—

ISLE OF MAN GOVERNMENT: GENERAL REGISTRY

ASYLUM PLANS: PARISH OF LEZAYRE

Original coloured (decorative)

1:23



ISLE OF MAN GOVERNMENT: GENERAL REGISTRY

ASYLUM PLANS: PARISH OF LEZAYRE

Original monotone

1:23

