

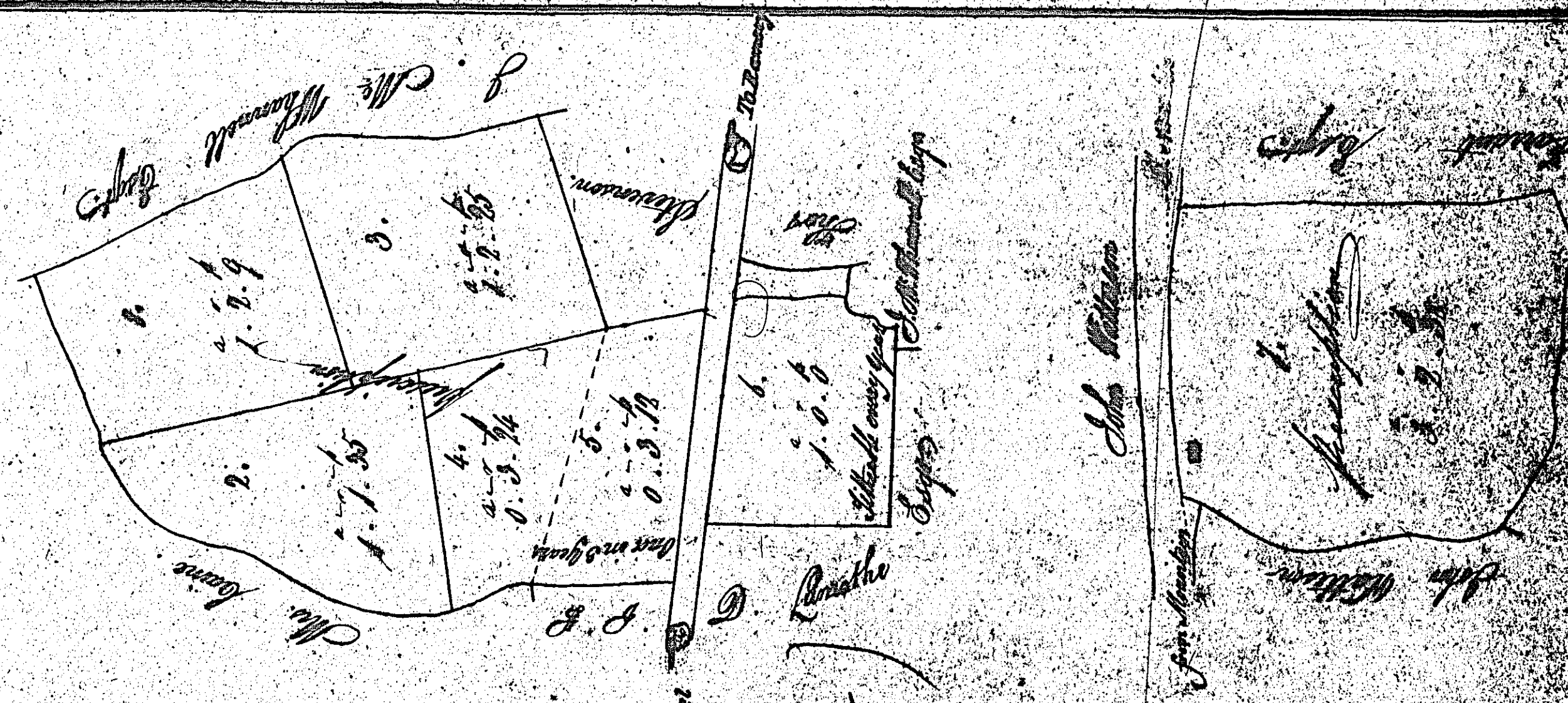
ISLE OF MAN GOVERNMENT: GENERAL REGISTRY

ASYLUM PLANS: PARISH OF LEZAYRE

Originals monotone

1:23

Plan
of the
CLERK'S GLEN
in the parish of
Lezayre



Contents

1	1.2.9
2	1.1.85
3	1.0.6
4	0.3.74
5	0.3.78
6	1.0.6
Total 8.1.37 1/2	

Area 1.1.37 1/2

John Keane

Plan of a parcel of
Lands &
in the parish of Lezayre
the property of
Mrs. Pain



Contents

1	1.1.39
2	0.3.22
3	0.3.17 1/2
4	1.0.3 1/2
5	2.0.35 1/2
6	1.1.11 1/2
7	1.0.31 1/2
Total 8.1.37 1/2	

Area 8.1.37 1/2

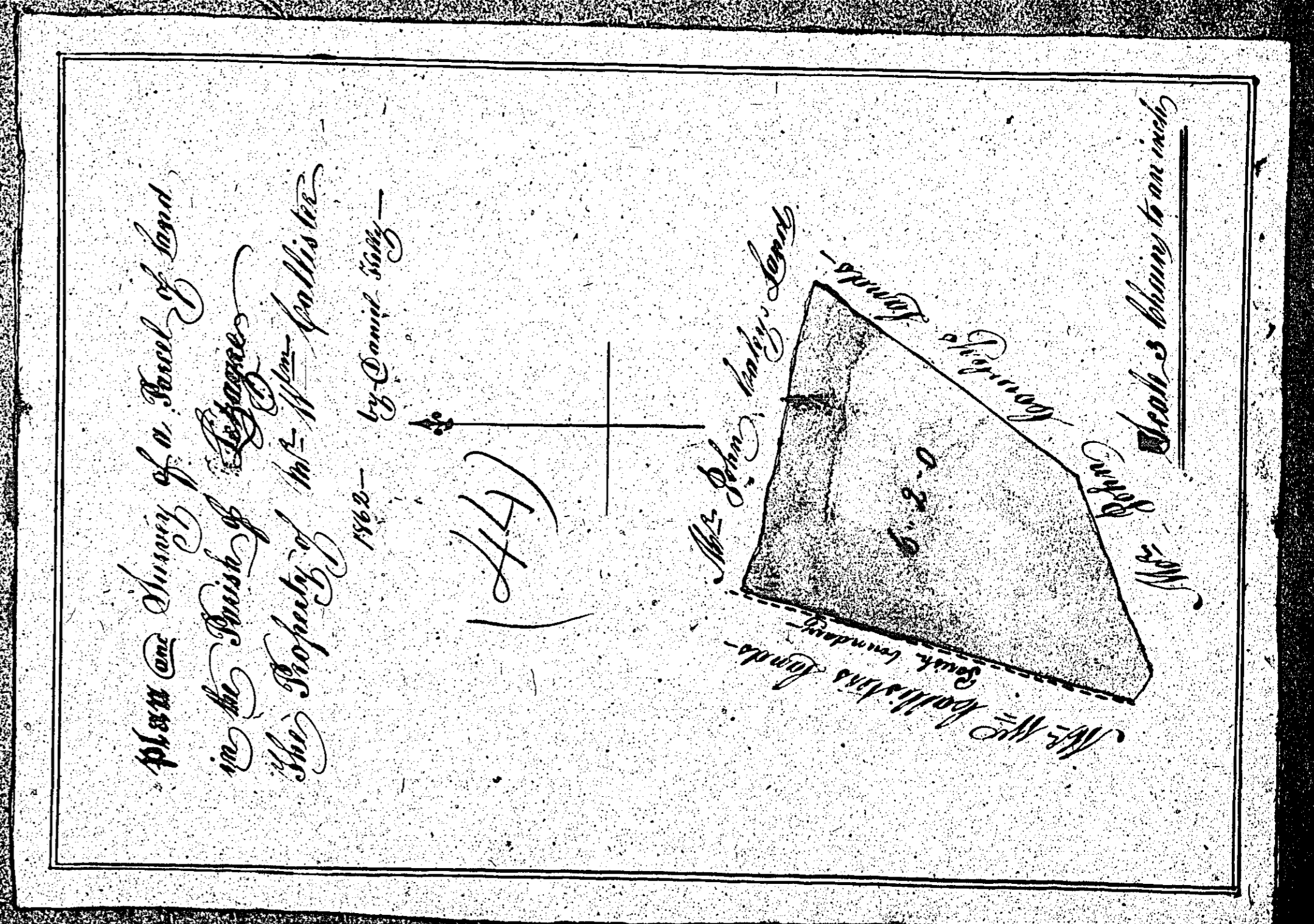
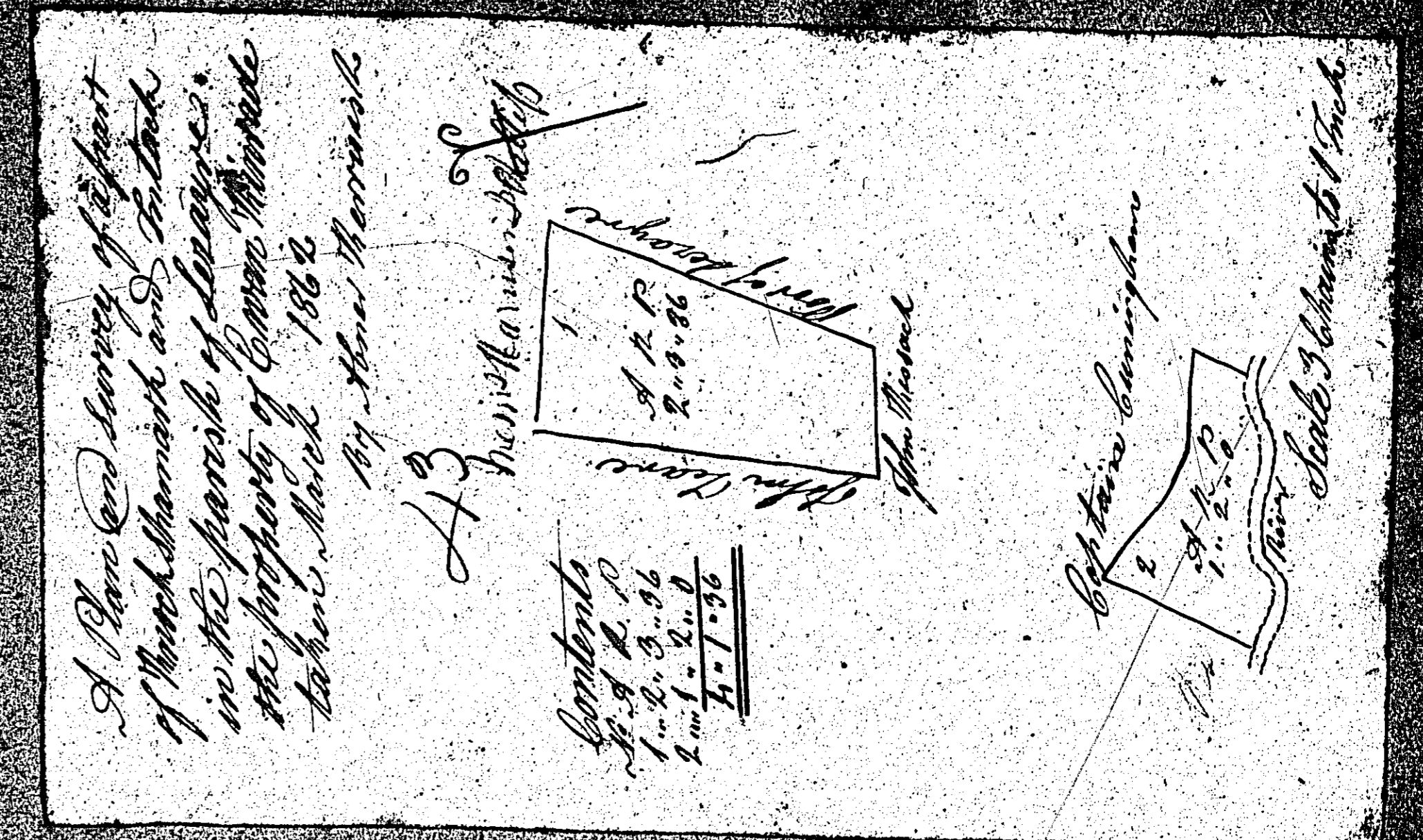
John Keane

ISLE OF MAN GOVERNMENT: GENERAL REGISTRY

ASYLUM PLANS: PARISH OF LEZAYRE

1:23

- 43 Original monotone
- 44 Original coloured (decorative)

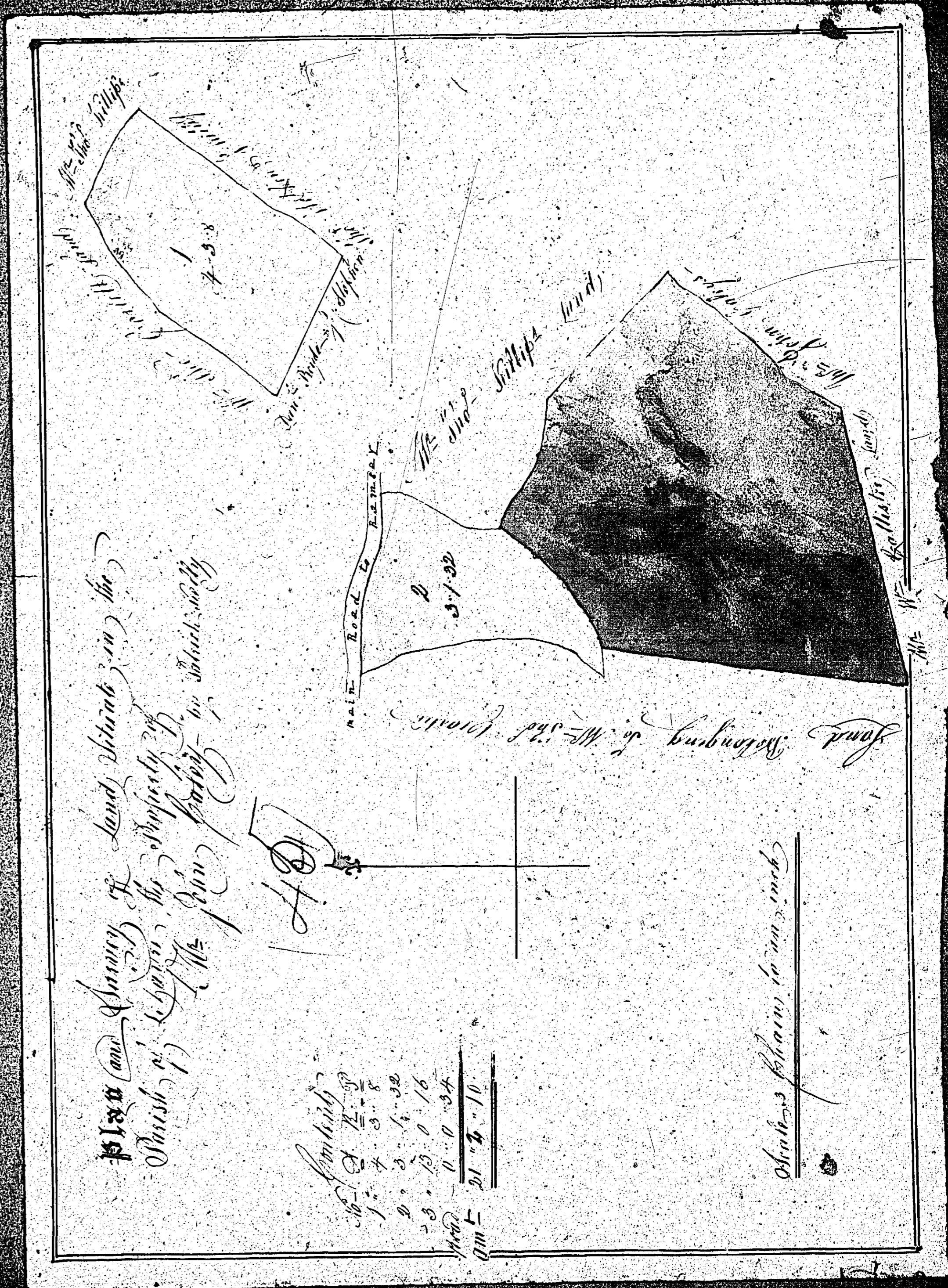


ISLE OF MAN GOVERNMENT: GENERAL REGISTRY

ASYLUM PLANS: PARISH OF LEZAYRE

Original coloured

1:23



ISLE OF MAN GOVERNMENT: GENERAL REGISTRY

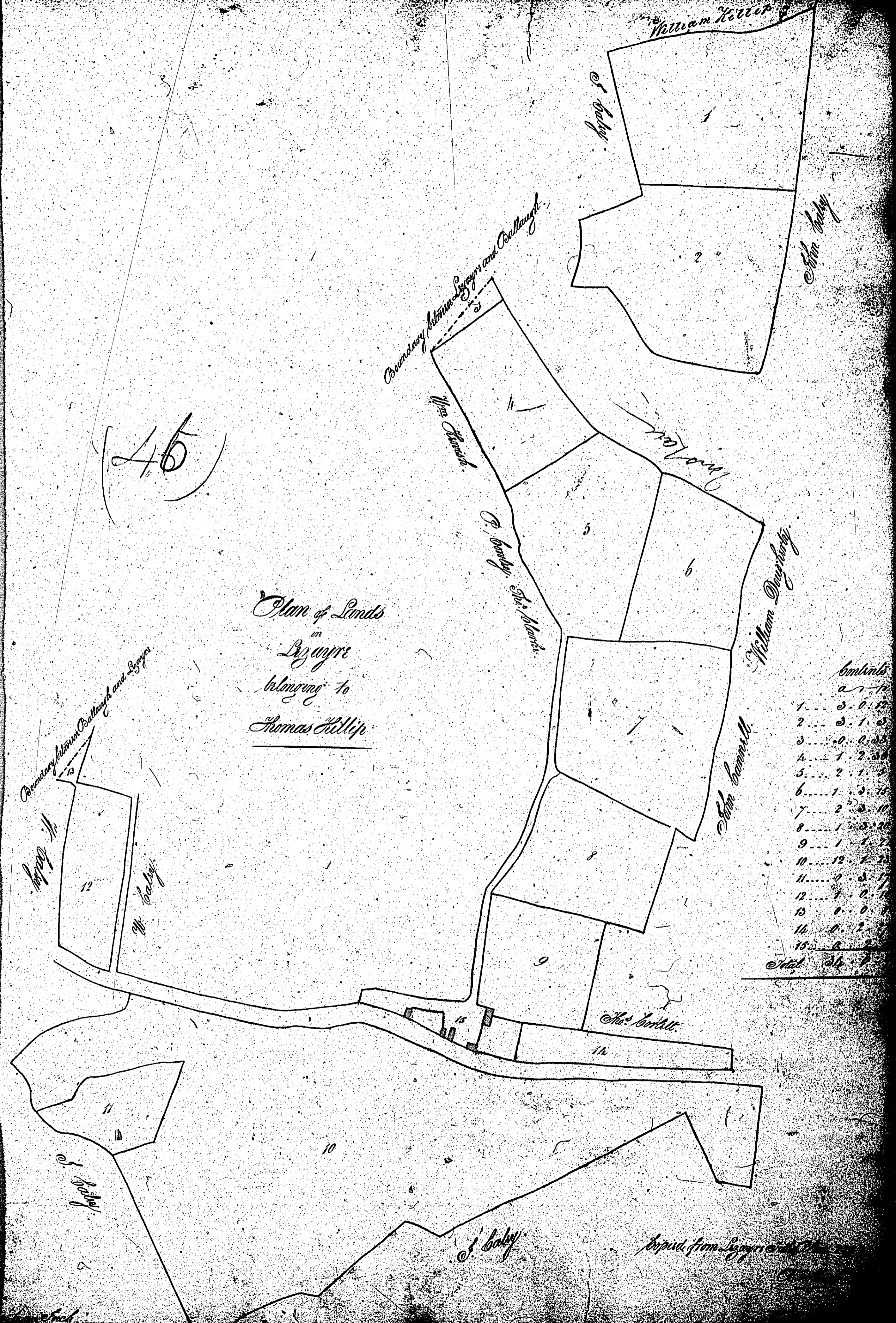
ASYLUM PLANS: PARISH OF LEZAYRE

Original monotone

1:23

(45)

Plan of Lands
in
Lezayre
belonging to
Thomas Hillier

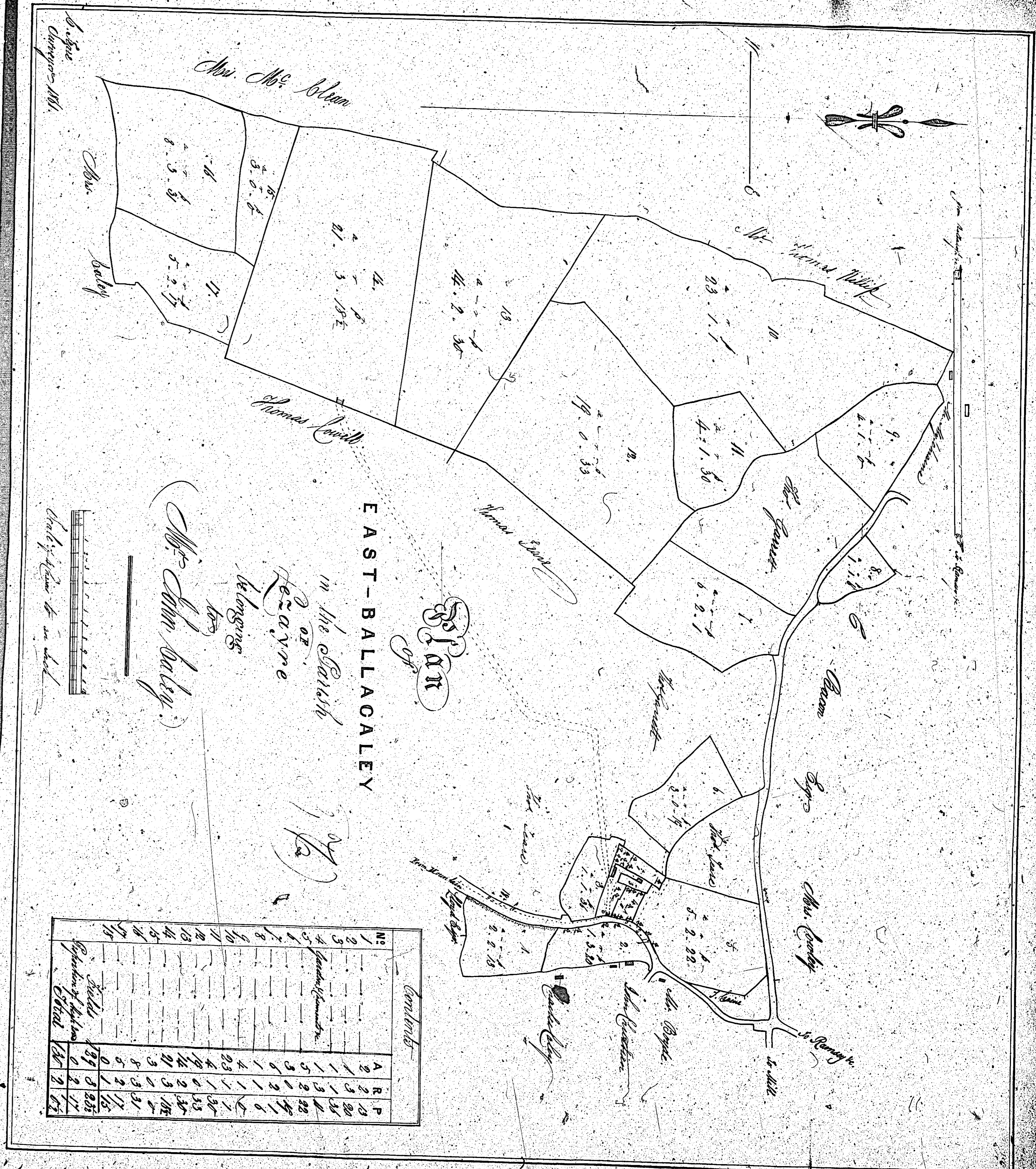


ISLE OF MAN GOVERNMENT: GENERAL REGISTRY

ASYLUM PLANS: PARISH OF LEZAYRE

Original monotone

1:23



ISLE OF MAN GOVERNMENT: GENERAL REGISTRY

ASYLUM PLANS: PARISH OF LEZAYRE

Original monotone

1:23

