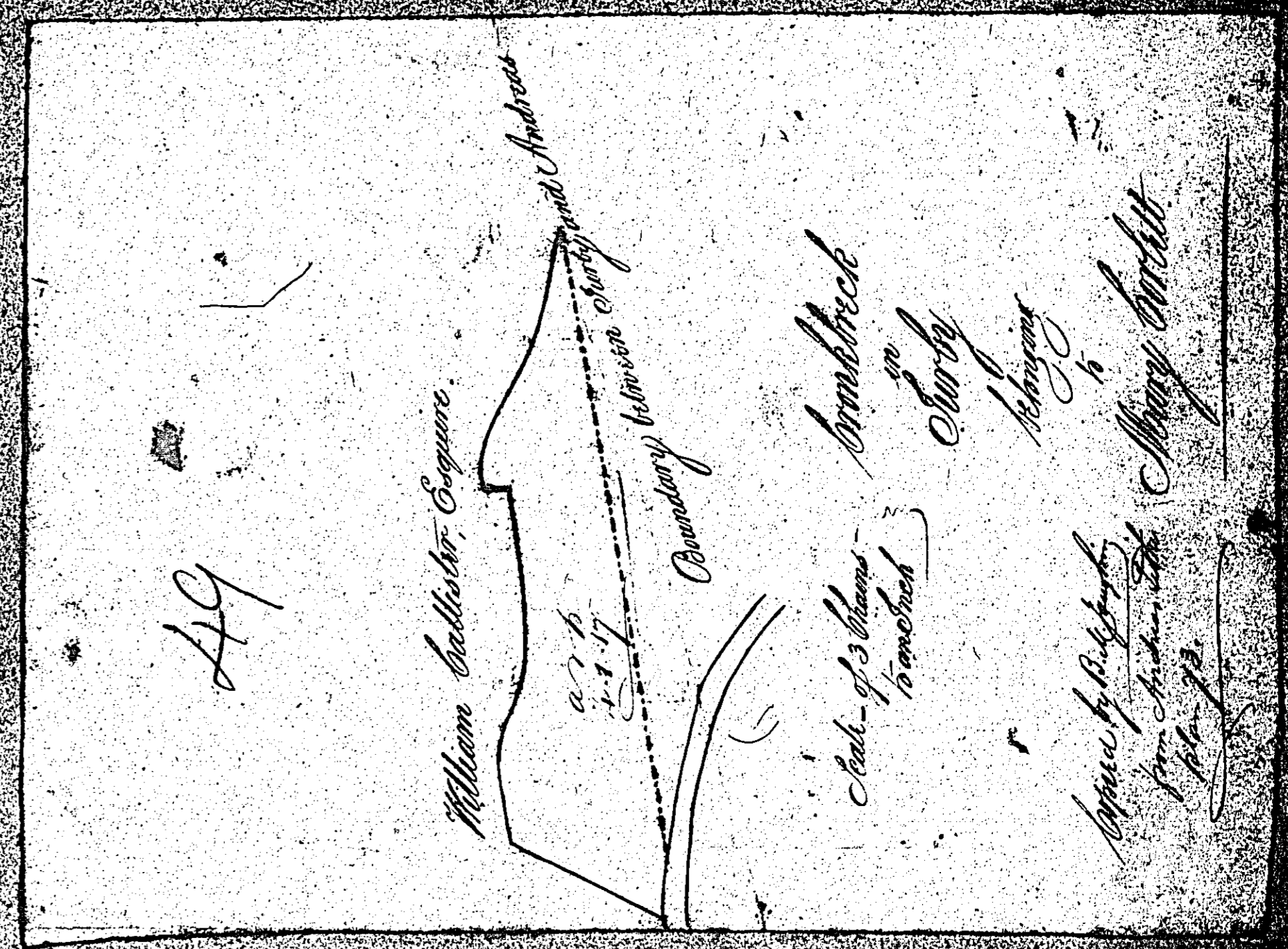
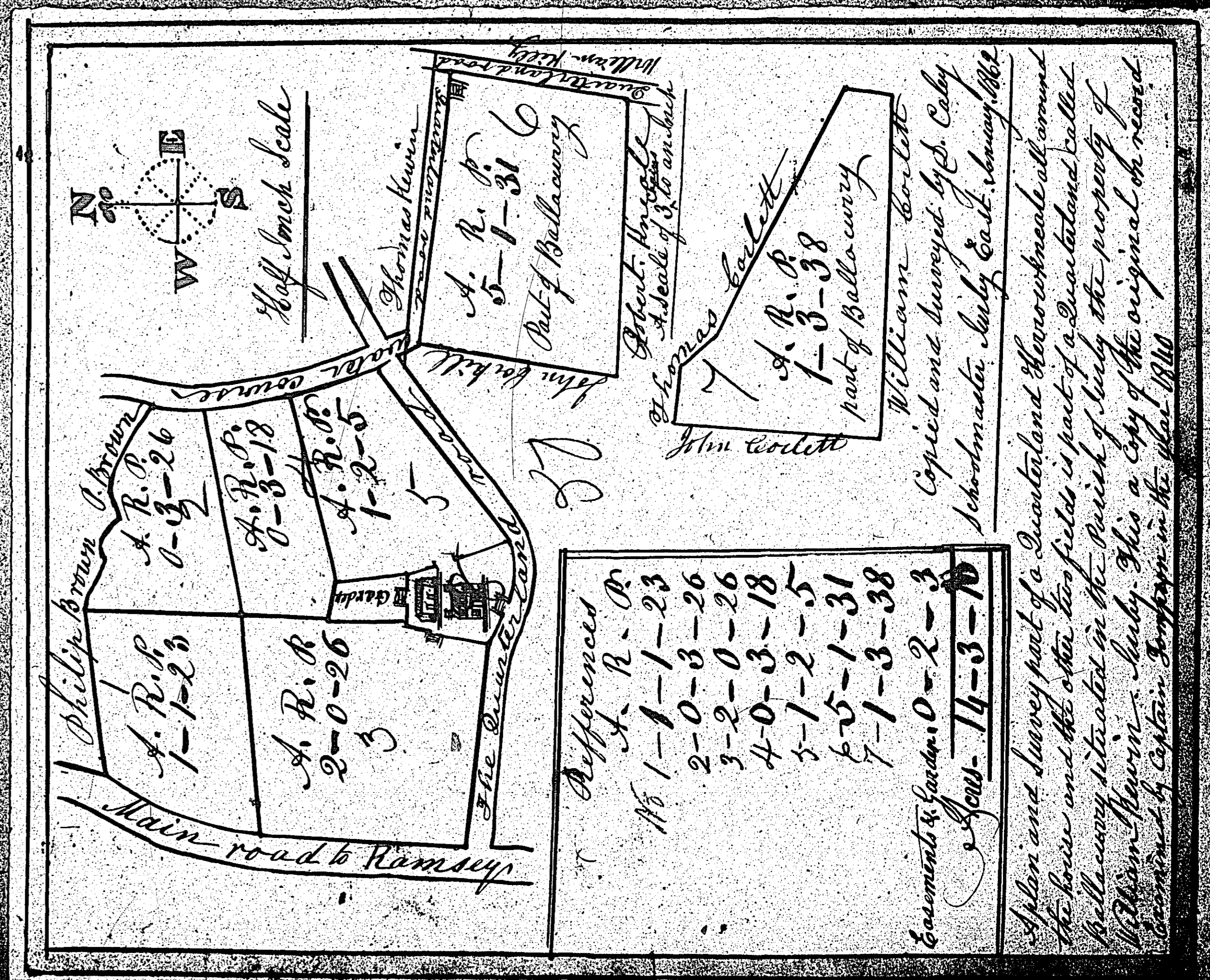


ISLE OF MAN GOVERNMENT: GENERAL REGISTRY

ASYLUM PLANS: PARISH OF JURBY

- 49 Original monotone, marked
- 50 Original coloured (decorative)

1:23



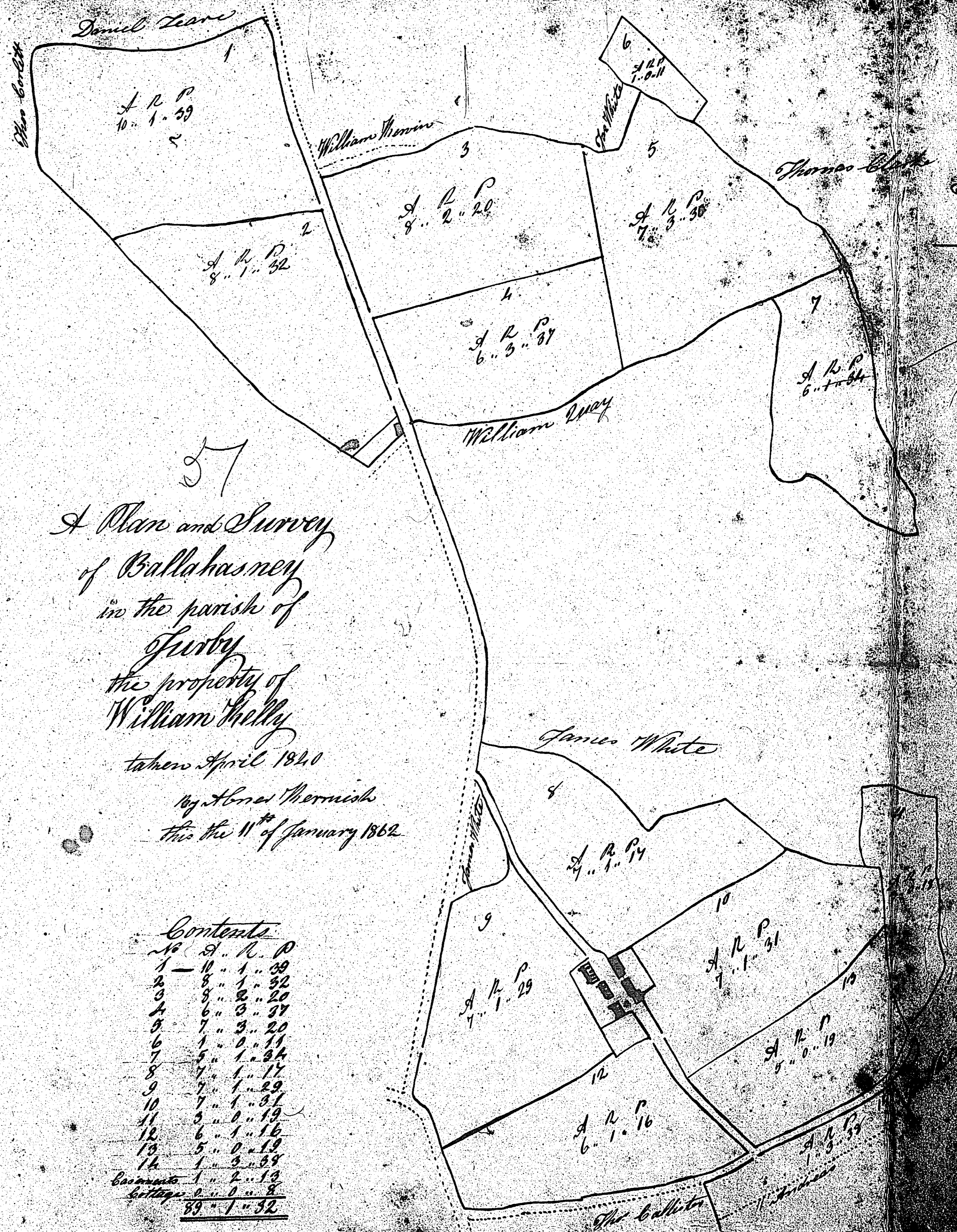


ISLE OF MAN GOVERNMENT: GENERAL REGISTRY

ASYLUM PLANS: PARISH OF JURBY

Original monotone, marked

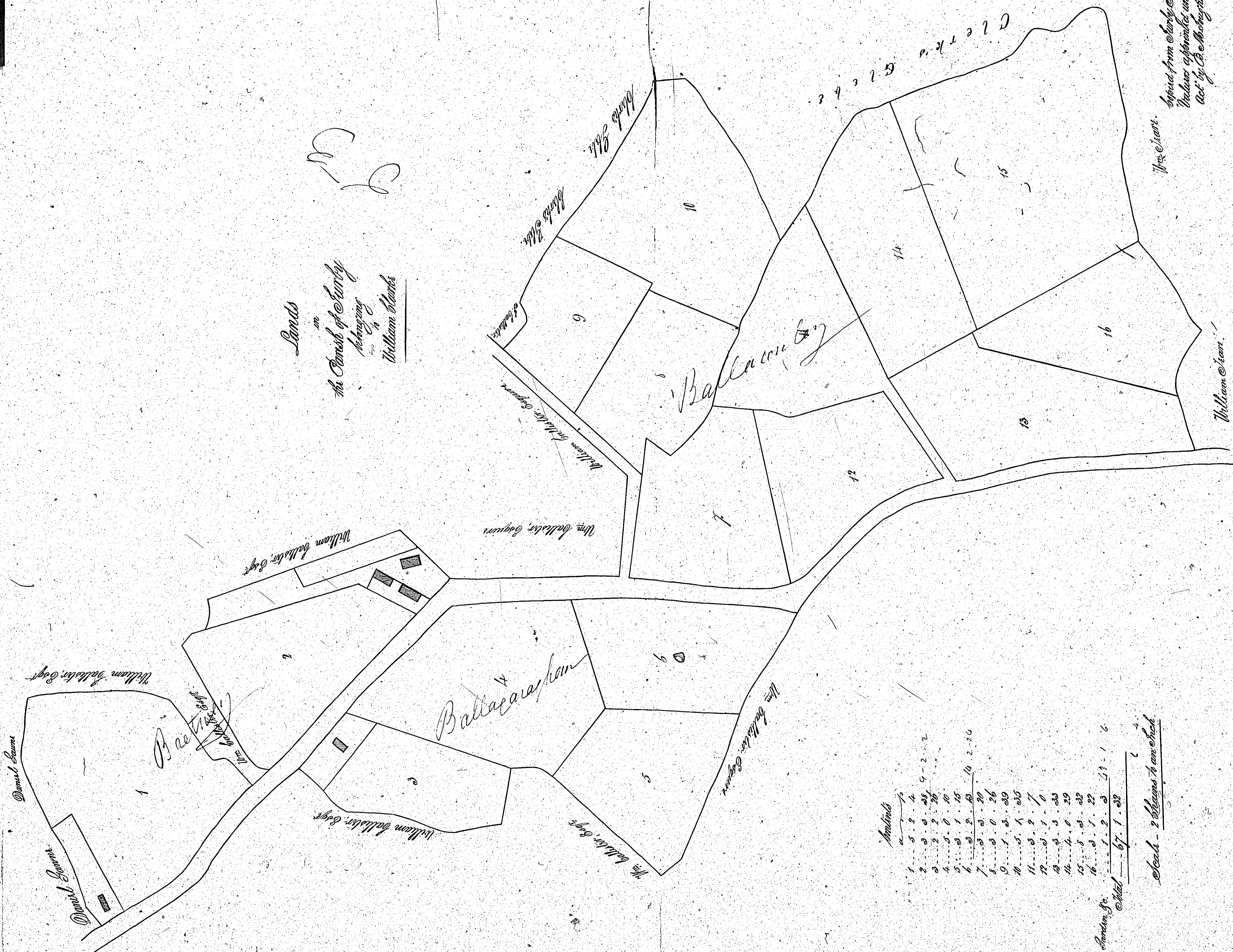
1:23











ISLE OF MAN GOVERNMENT: GENERAL REGISTRY

ASYLUM PLANS: PARISH OF JURBY

Original monotone

1:23



ISLE OF MAN GOVERNMENT: GENERAL REGISTRY

ASYLUM PLANS: PARISH OF JURBY

Original monotone

1:23

Plan of the  
CLERK'S GLEBE  
in the parish of  
**JURBY.**

54

CONTENTS			
No.	A	R.	P.
1	5	0	0
2	3	0	1
3	5	0	1/2
4	1	1	26
5	3	2	7/2
6	4	2	28 1/2
7	4	2	24
Total	27	1	26 1/2

Scale of 2 Chains to an Inch



J. Woods  
Surveyor 1868



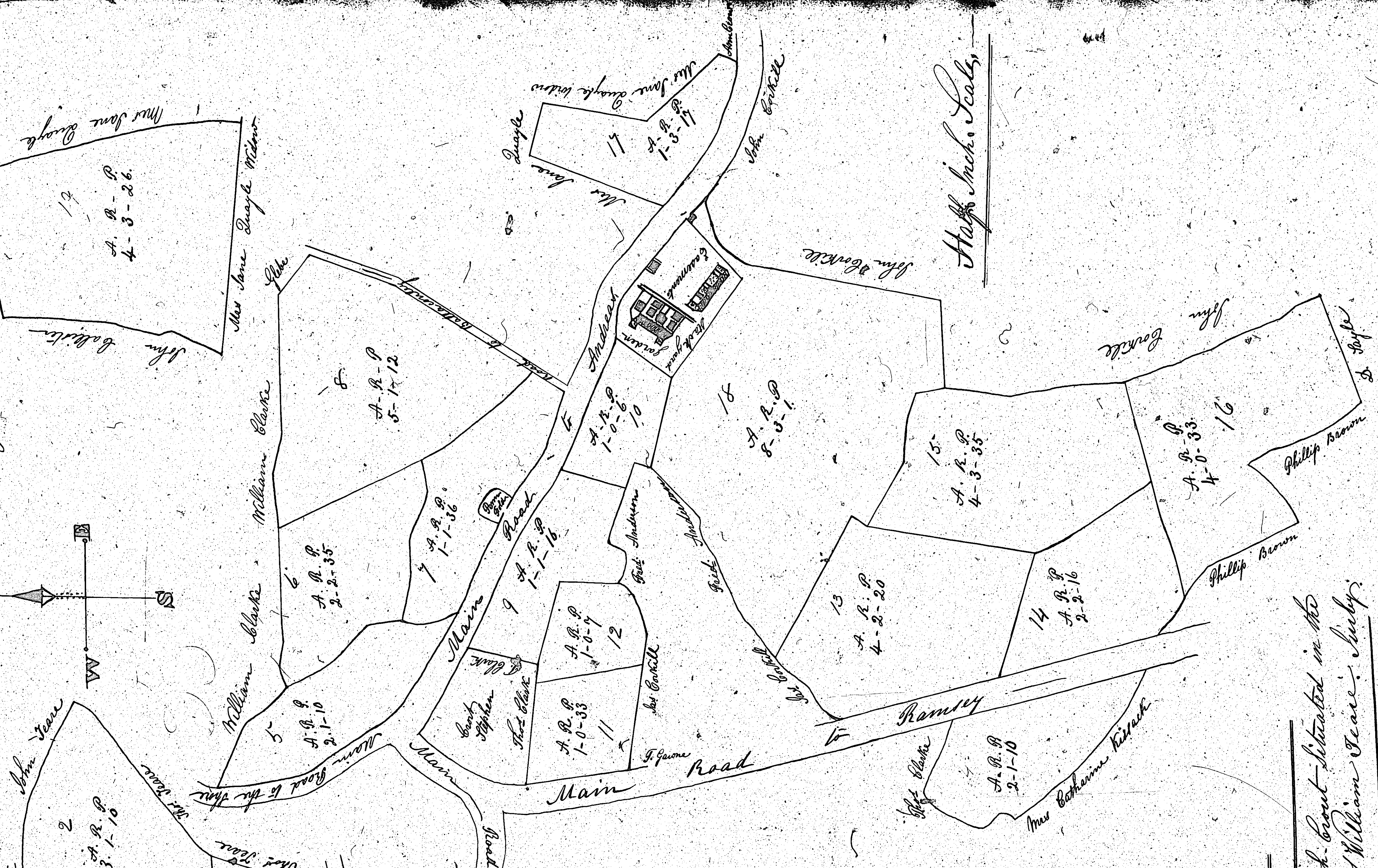
# Plan of Lough Court Jurby

ISLE OF MAN GOVERNMENT: GENERAL REGISTRY

ASYLUM PLANS: PARISH OF JURBY

Original monotone

1:23



References:  
A.R.P.

2	2-35
3	1-10
2	3-00
2	1-10
2	2-35
5	1-12
1	1-36
1	0-33
1	0-9
1	1-16
1	0-6
2	7-10
4	2-20
8	3-1
2	2-16
4	3-35
4	0-33
1	3-17
4	3-26
<hr/>	
59	2-01
<hr/>	
60	2-3
1	3-14
<hr/>	
63	1-17

Curvatures & Gardens: 1-0-2  
Meadow: 1-3-14  
Total Area: 63-1-17

Plan and Survey of Lough Court situated in the parish of Jurby the property of William Seavey Jurby.

Surveyed by Daniel Cady Schoolmaster Jurby East in the year 1840.

Copied over by the said Daniel Cady the same as the original on record in January 1862