

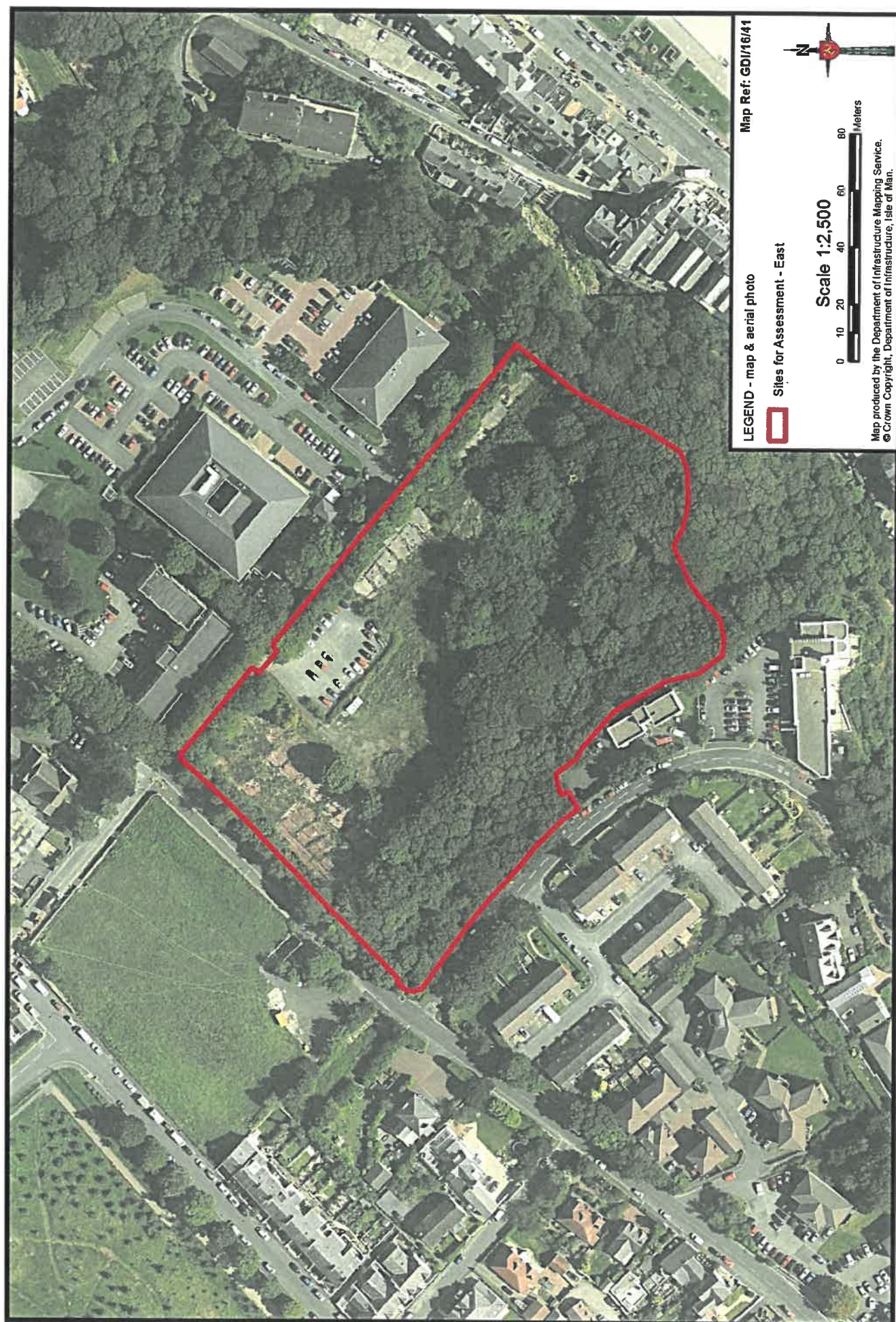
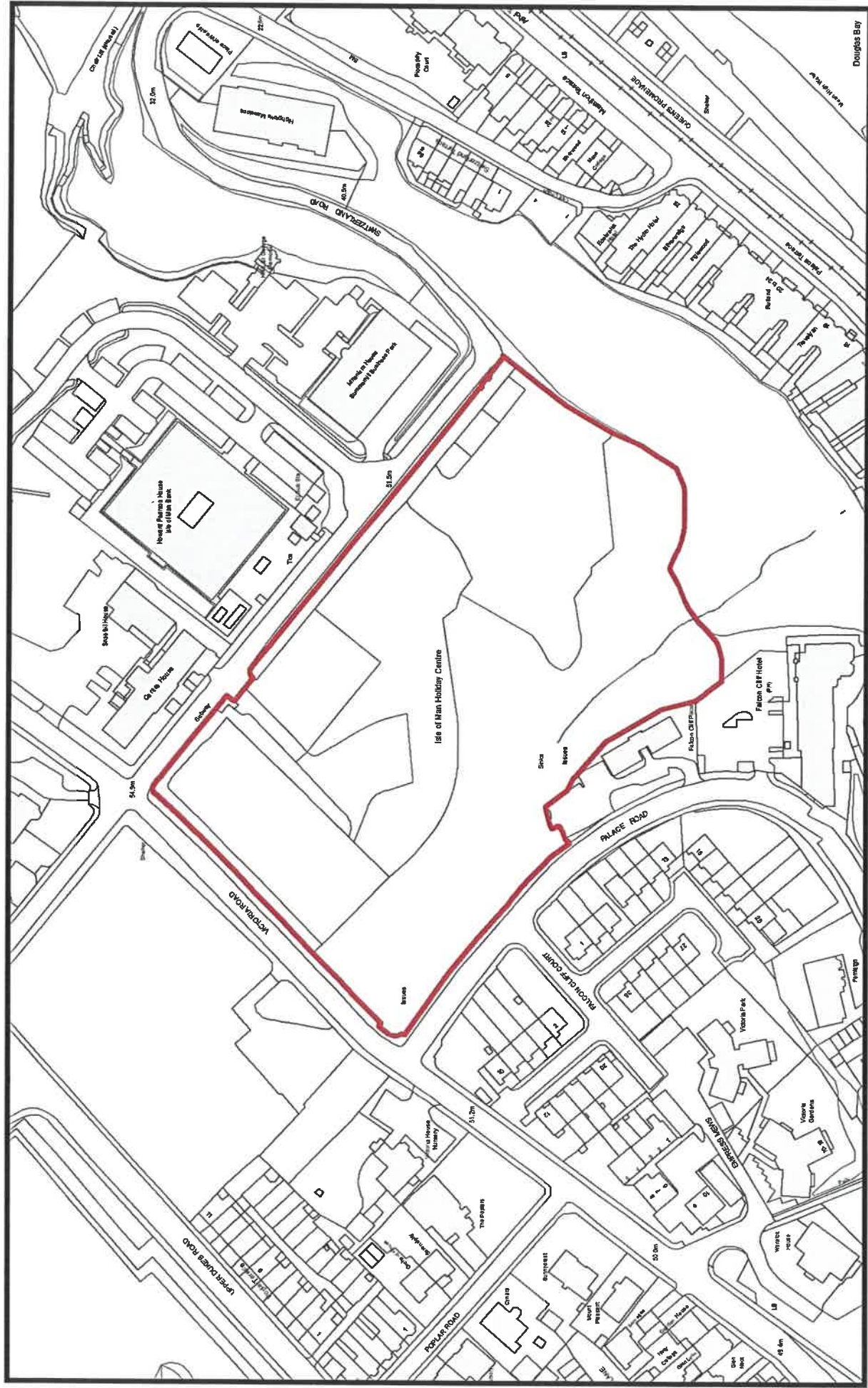
On All Sites Layer recode as DMO13 Post PP (Rep)
DE010 (same area) goes on Options Layer (as CO supporting
Pre-PP



Cabinet Office

AREA PLAN FOR THE EAST
Sites for Assessment

DE010
Pre-PP



LEGEND - map & aerial photo

□ Sites for Assessment - East

Map Ref: GD/16/41

Scale 1:2,500



Map produced by the Department of Infrastructure Mapping Service.
© Crown Copyright, Department of Infrastructure, Isle of Man.