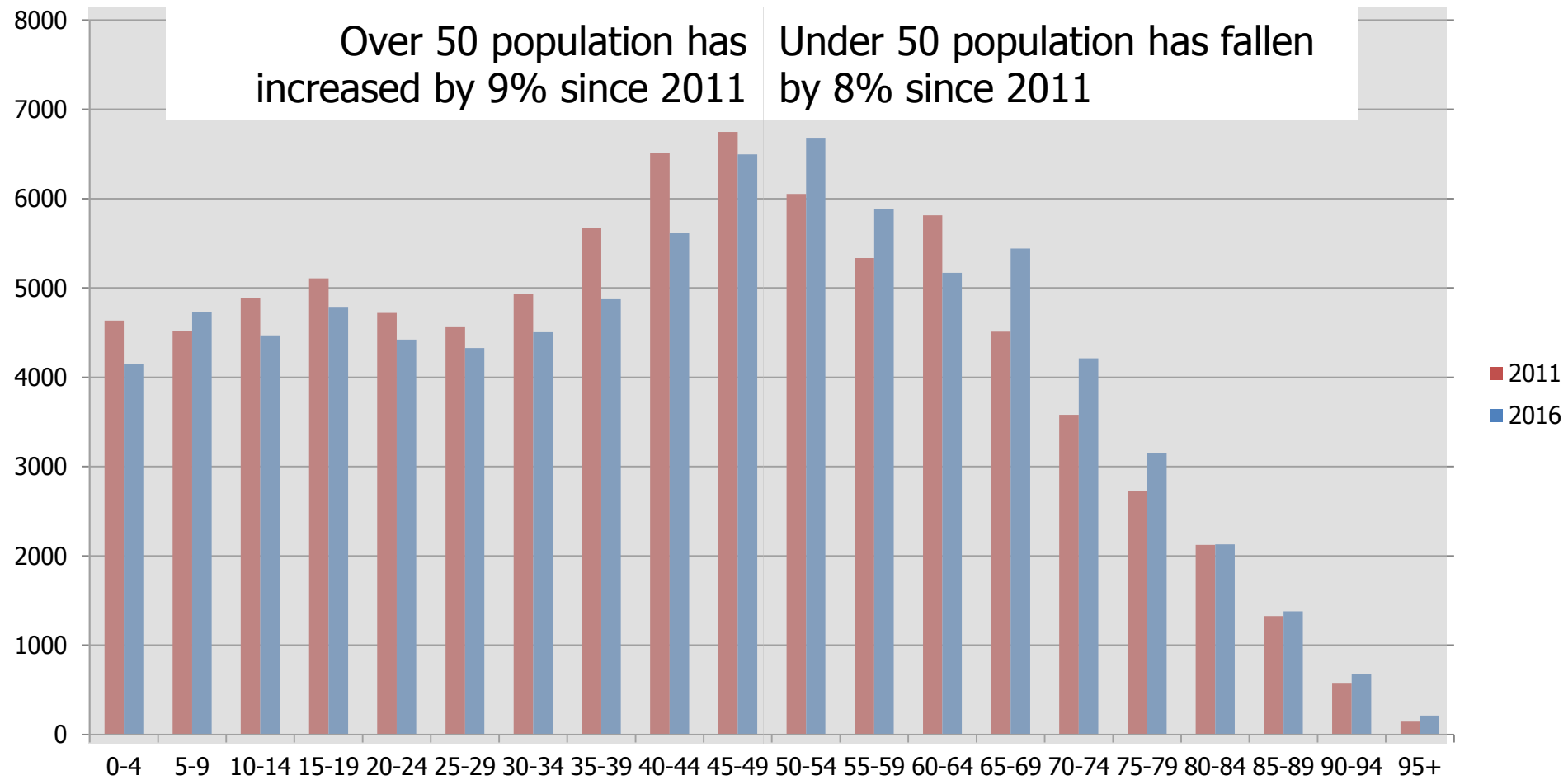




2016 Isle of Man Census

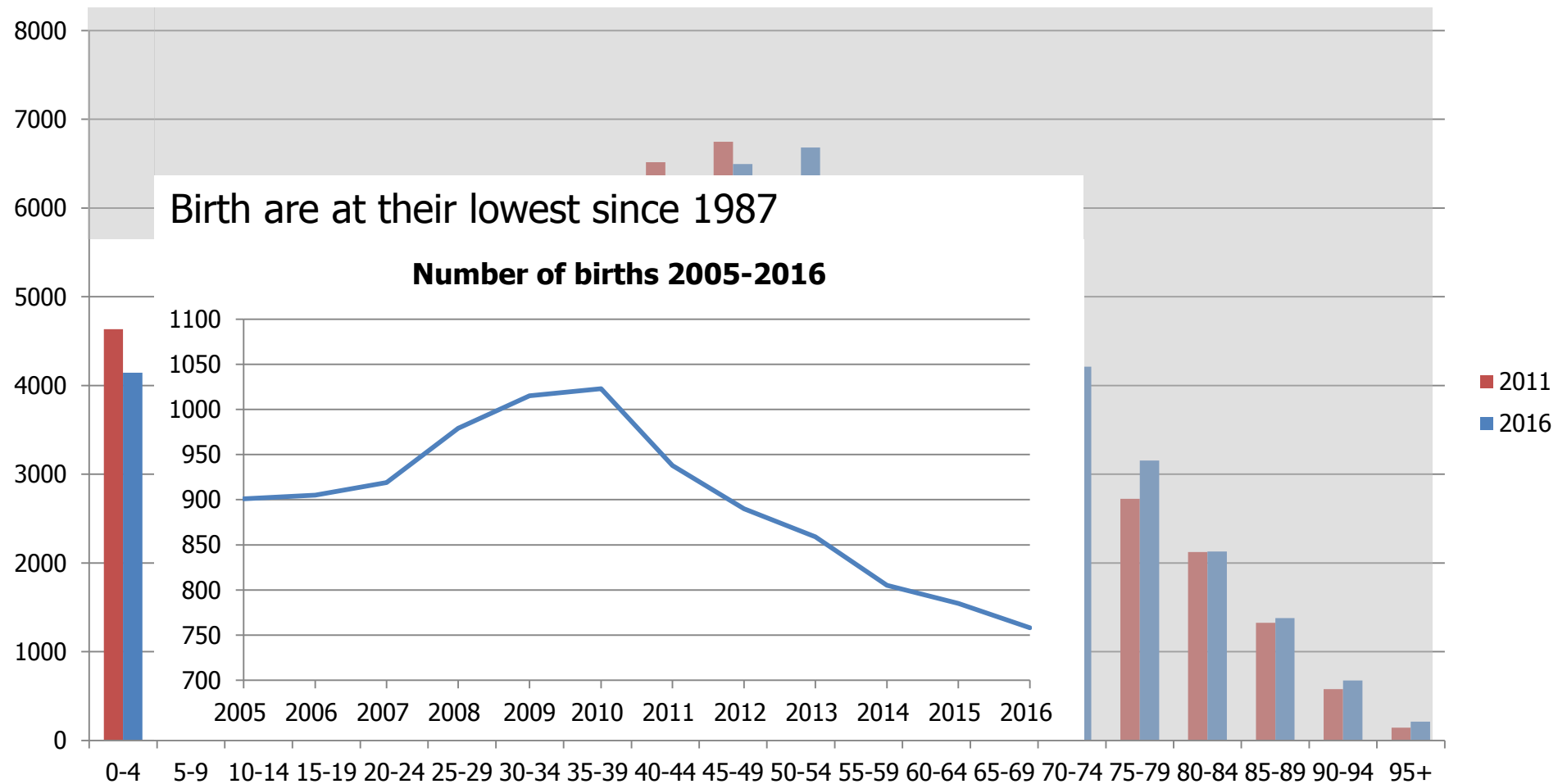
Detailed Census Analysis

2016 vs 2011 Population Profile



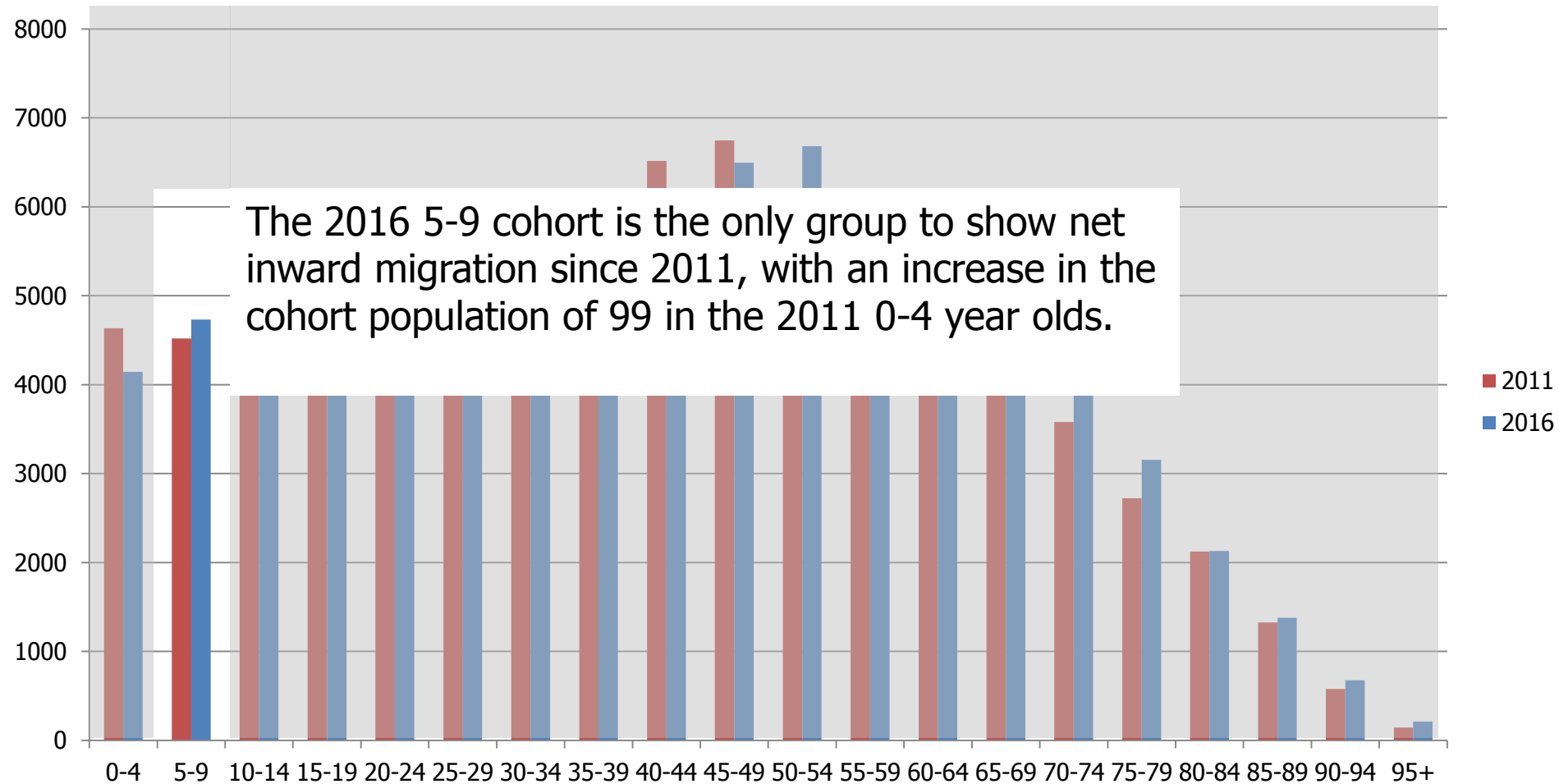
OUR ISLAND: A SPECIAL PLACE TO LIVE AND WORK

Births on the Isle of Man



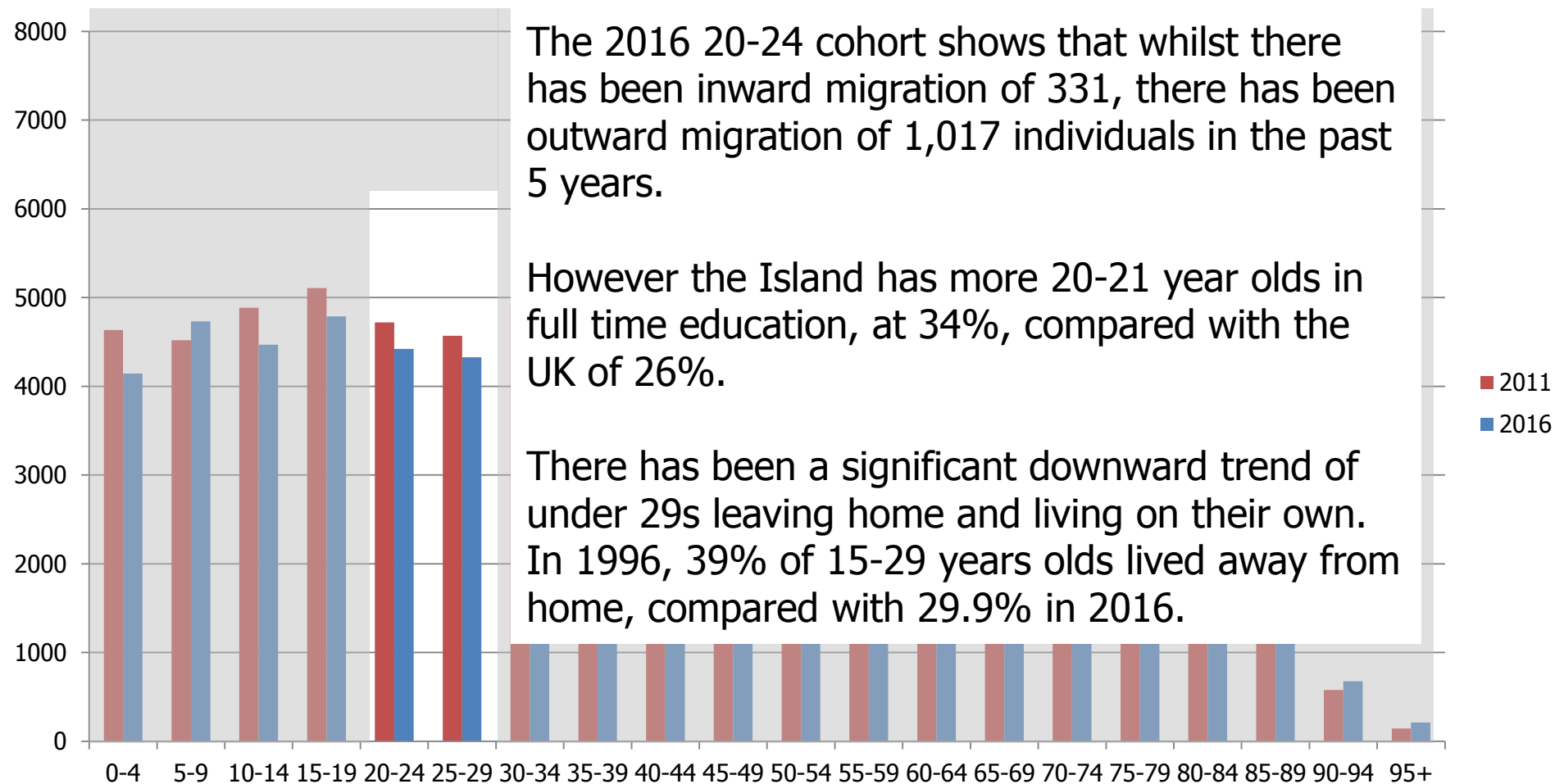
OUR ISLAND: A SPECIAL PLACE TO LIVE AND WORK

Unique Inward Migration



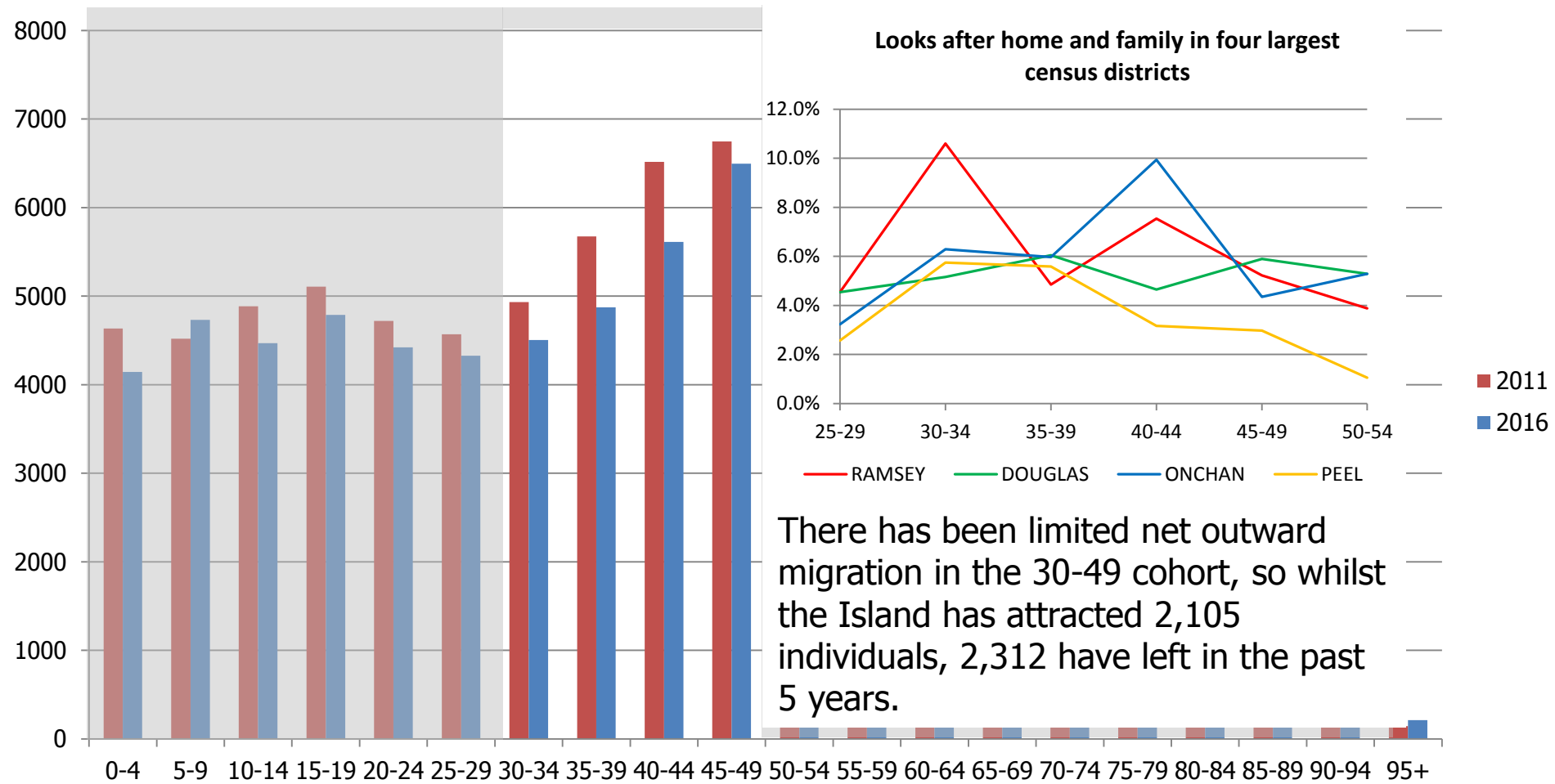
OUR ISLAND: A SPECIAL PLACE TO LIVE AND WORK

Emigration of Young adults



OUR ISLAND: A SPECIAL PLACE TO LIVE AND WORK

Life cycle at prime working age



There has been limited net outward migration in the 30-49 cohort, so whilst the Island has attracted 2,105 individuals, 2,312 have left in the past 5 years.

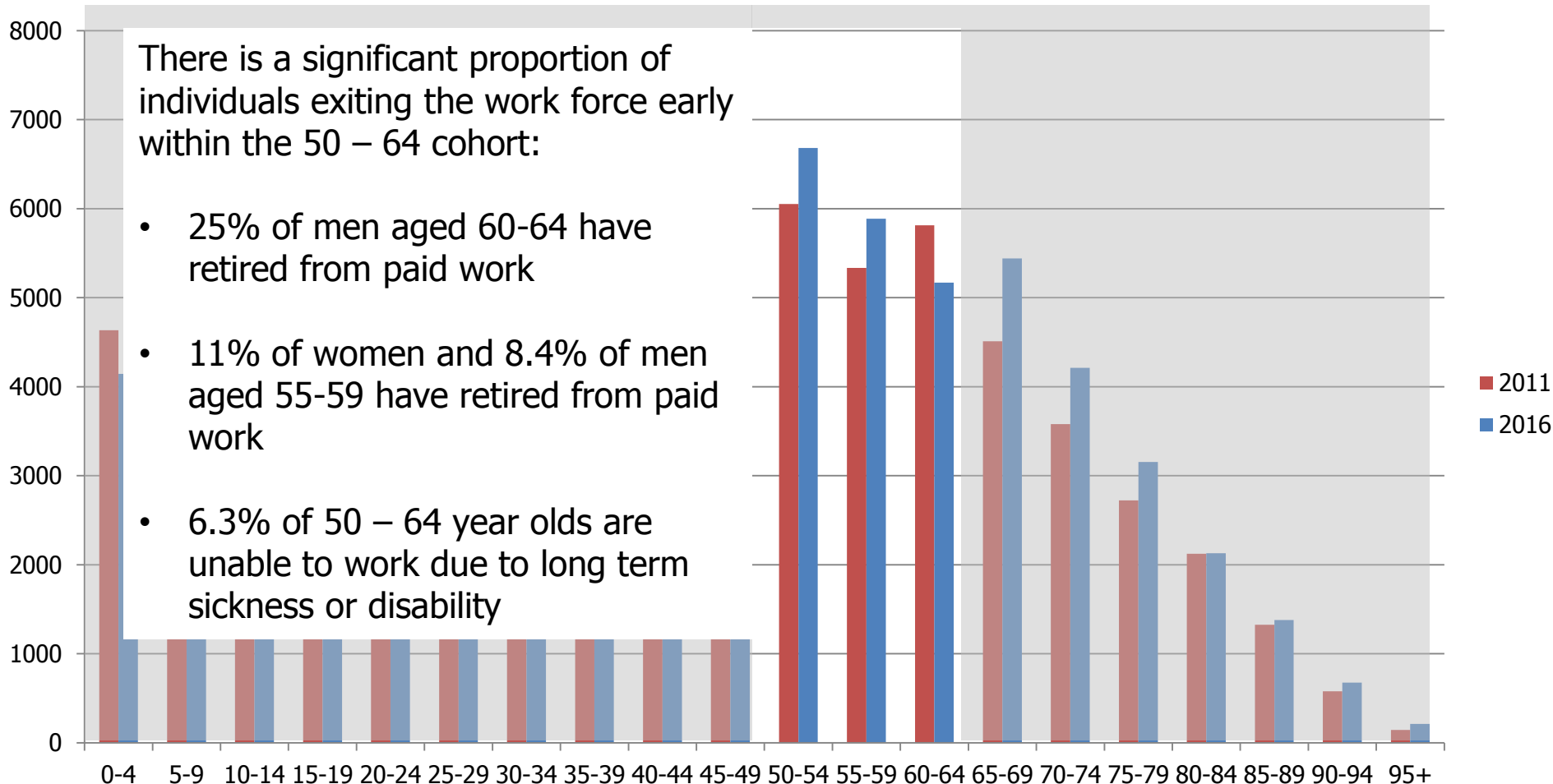


OUR ISLAND: A SPECIAL PLACE TO LIVE AND WORK

Early exit from the work force

There is a significant proportion of individuals exiting the work force early within the 50 – 64 cohort:

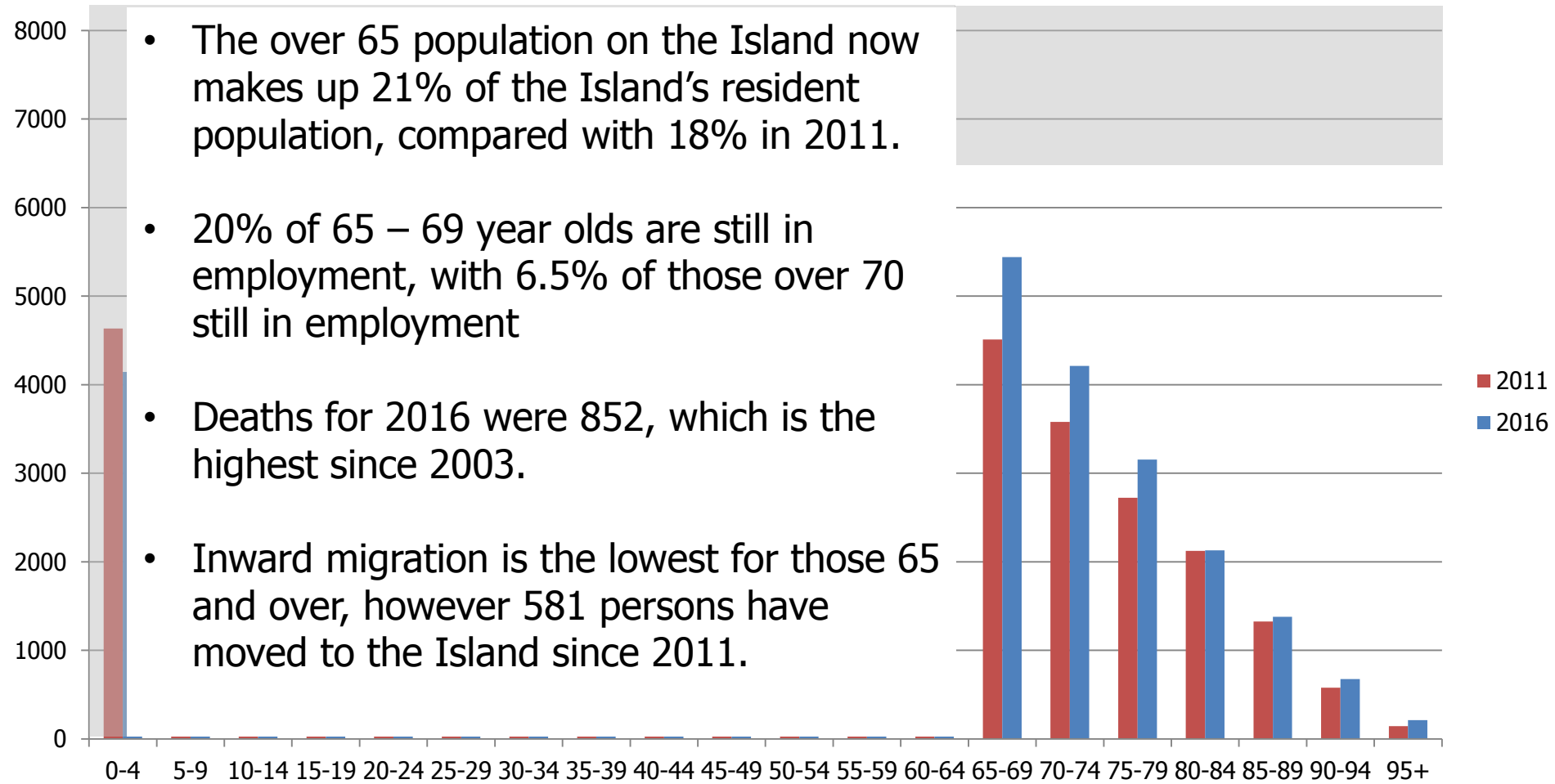
- 25% of men aged 60-64 have retired from paid work
- 11% of women and 8.4% of men aged 55-59 have retired from paid work
- 6.3% of 50 – 64 year olds are unable to work due to long term sickness or disability



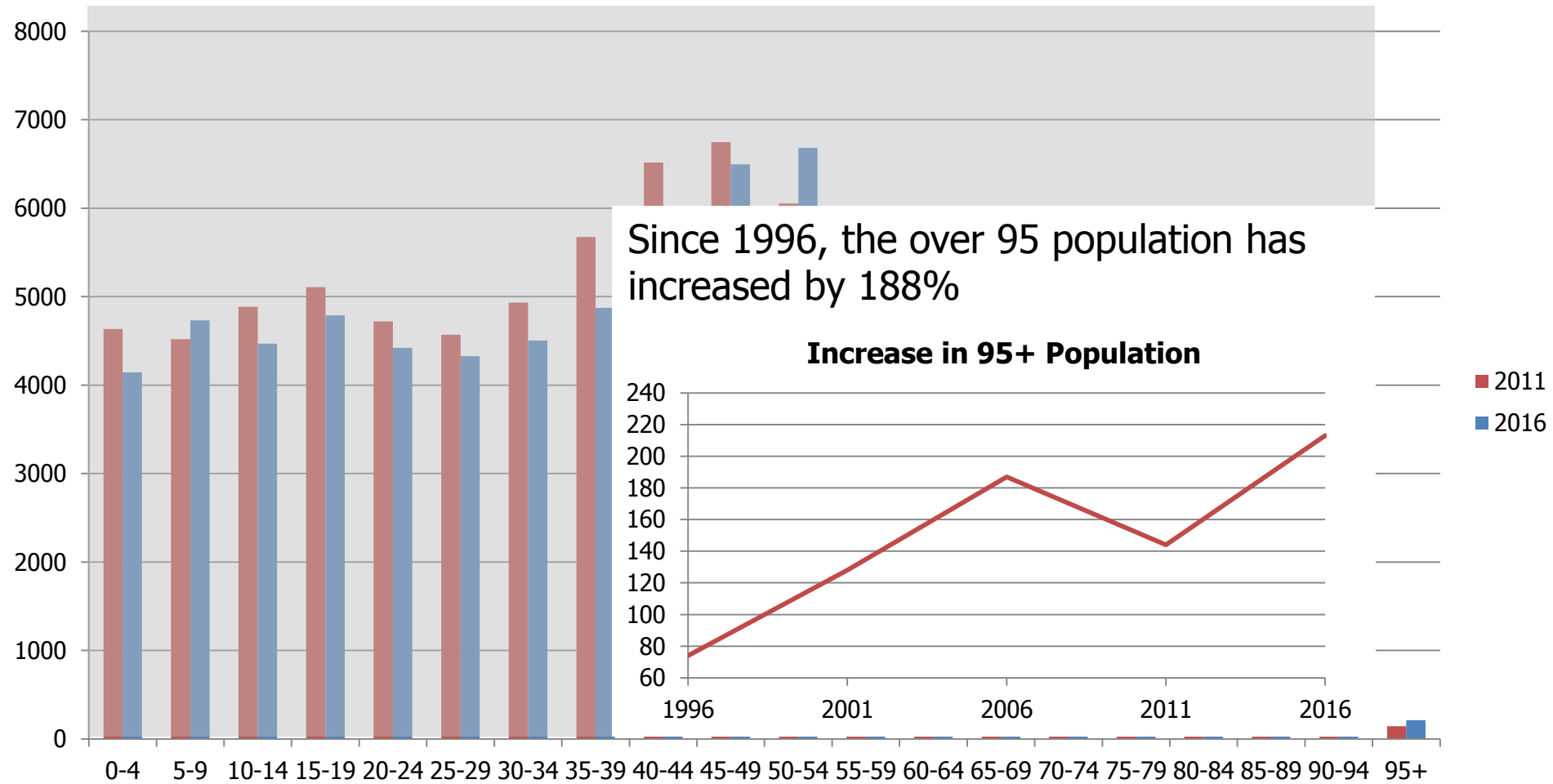
OUR ISLAND: A SPECIAL PLACE TO LIVE AND WORK

Retired and Elderly Population

- The over 65 population on the Island now makes up 21% of the Island's resident population, compared with 18% in 2011.
- 20% of 65 – 69 year olds are still in employment, with 6.5% of those over 70 still in employment
- Deaths for 2016 were 852, which is the highest since 2003.
- Inward migration is the lowest for those 65 and over, however 581 persons have moved to the Island since 2011.

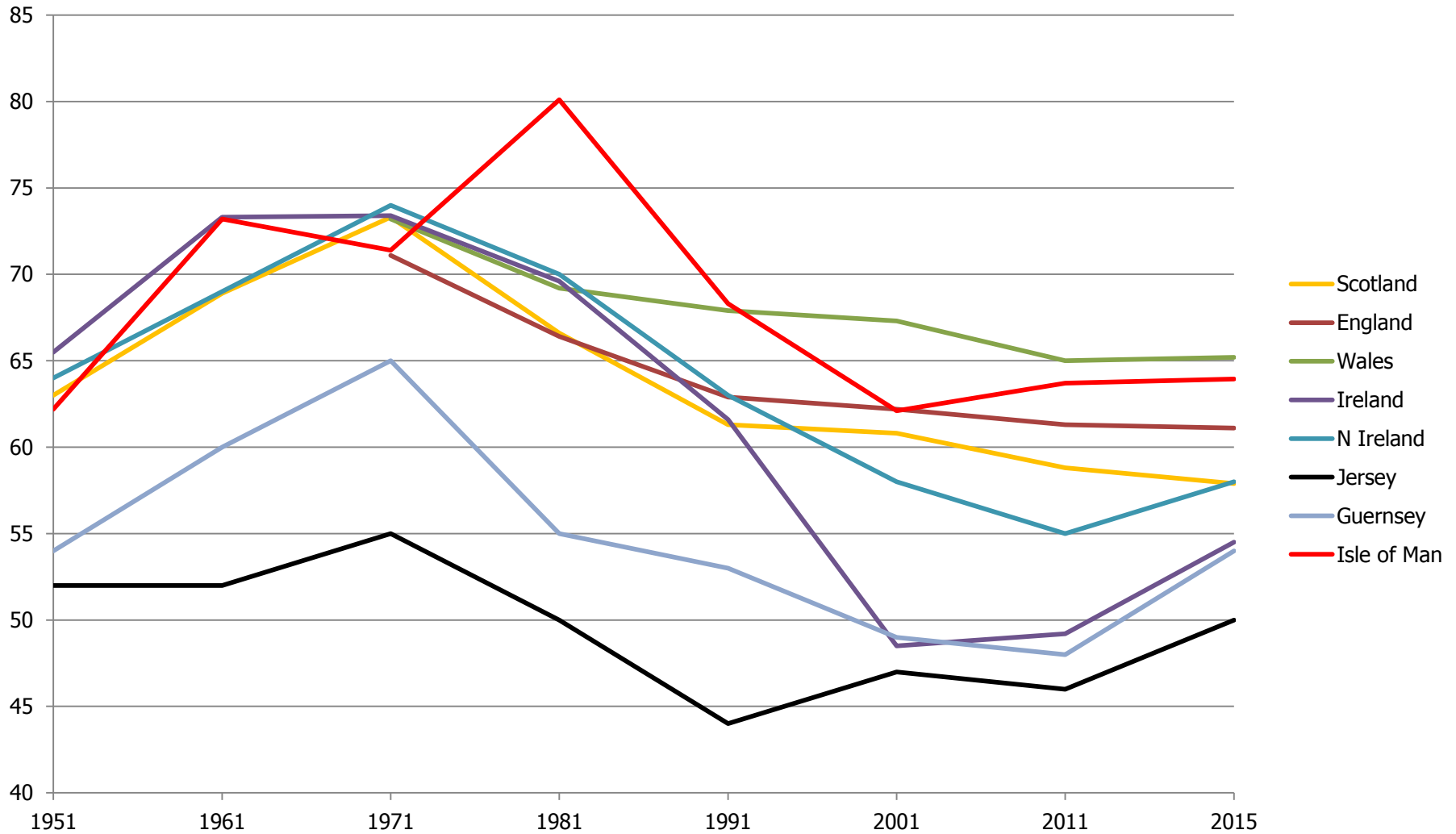


Over 95 Population



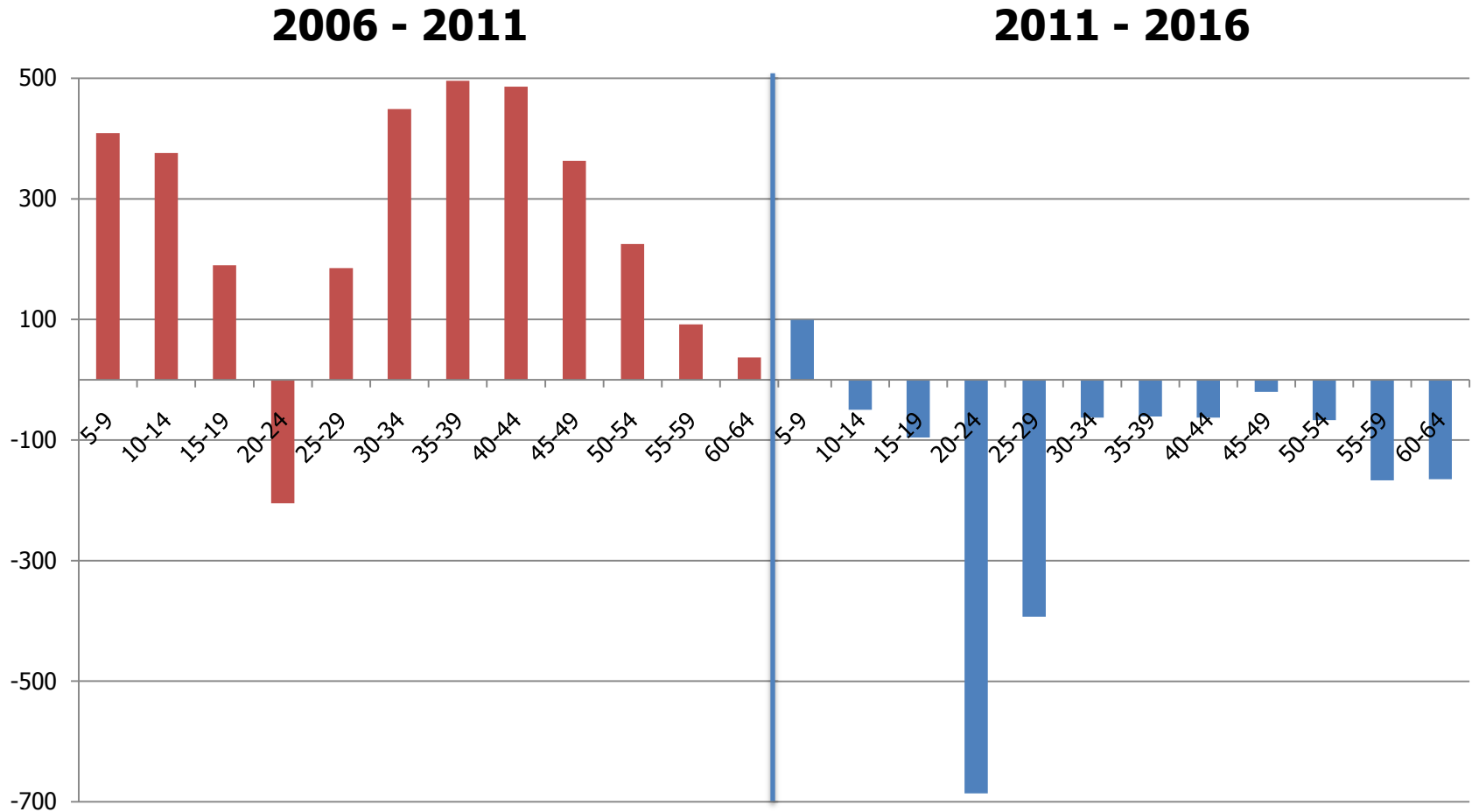
OUR ISLAND: A SPECIAL PLACE TO LIVE AND WORK

Dependency Ratios



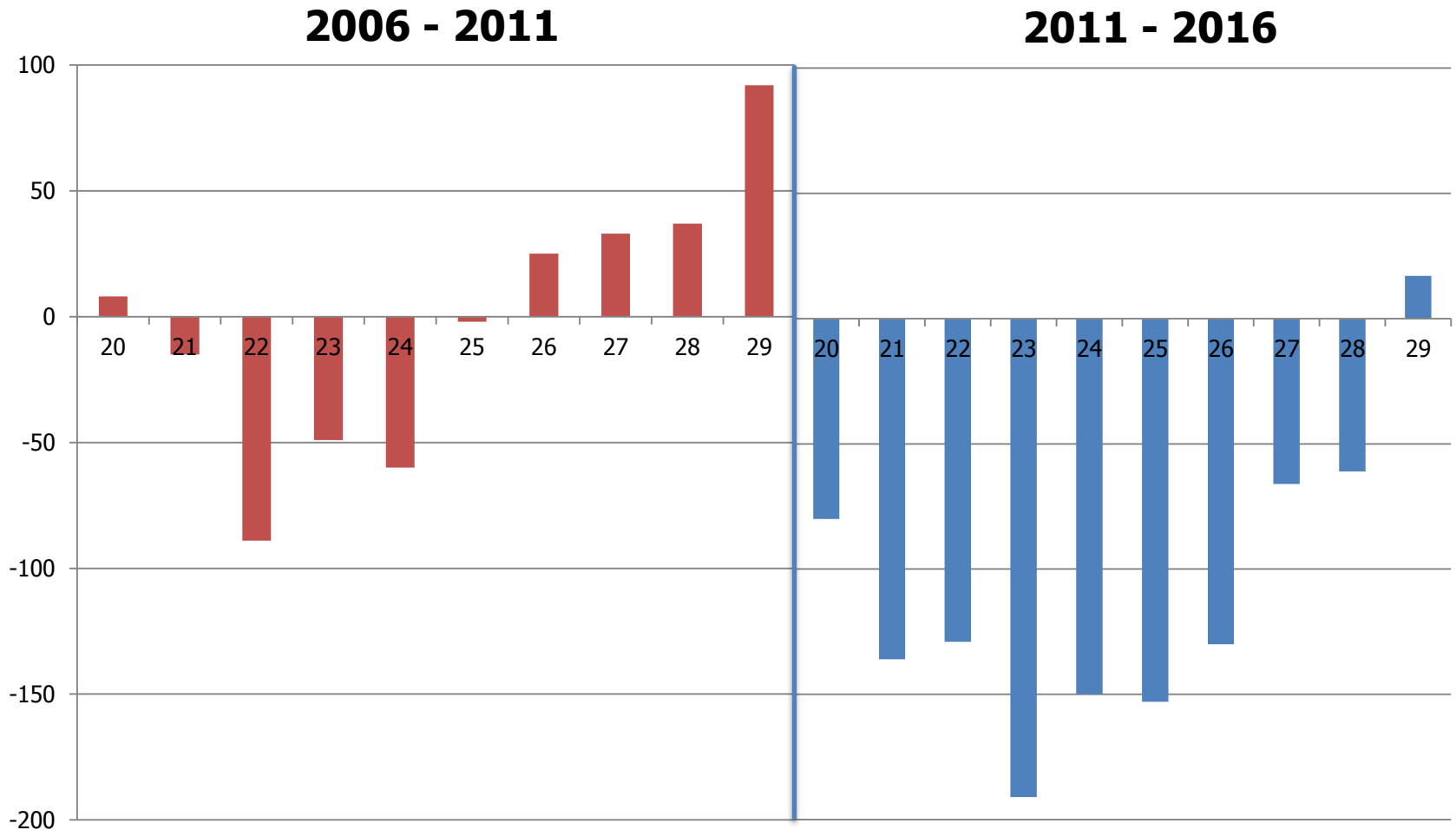
OUR ISLAND: A SPECIAL PLACE TO LIVE AND WORK

Cohort Movement



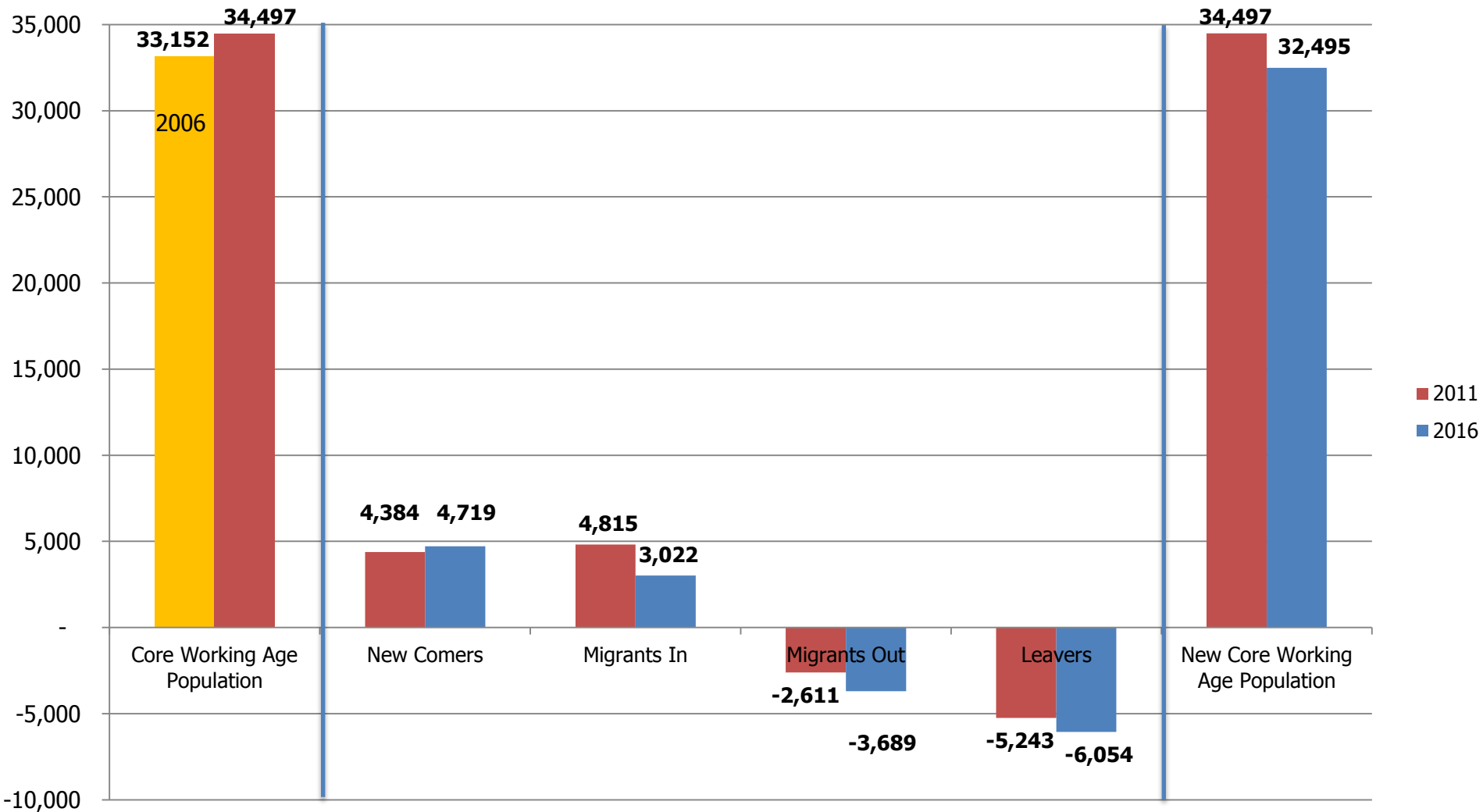
OUR ISLAND: A SPECIAL PLACE TO LIVE AND WORK

Young Adult Migration



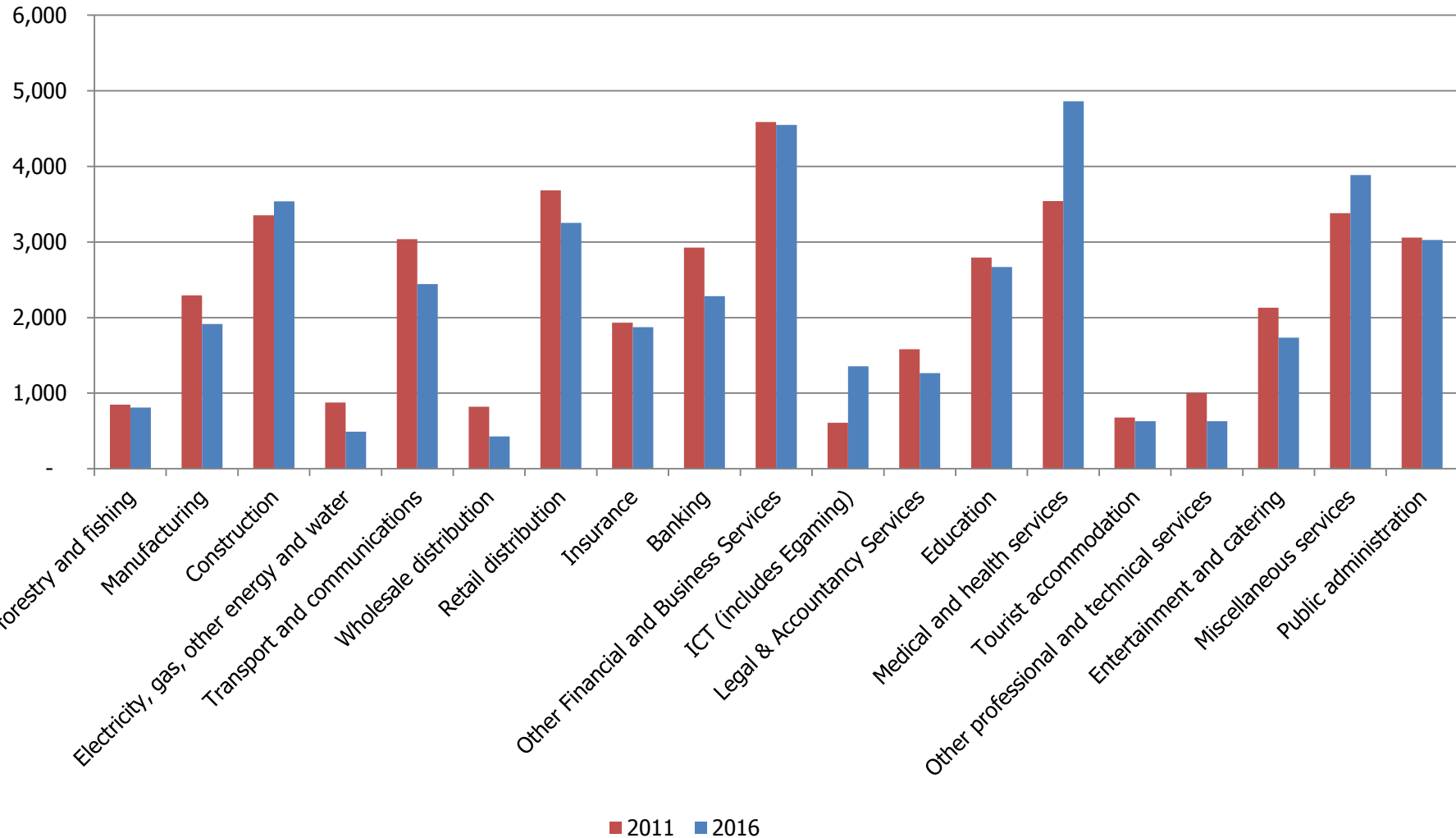
OUR ISLAND: A SPECIAL PLACE TO LIVE AND WORK

Movement in Core (25-54) Working Age Population



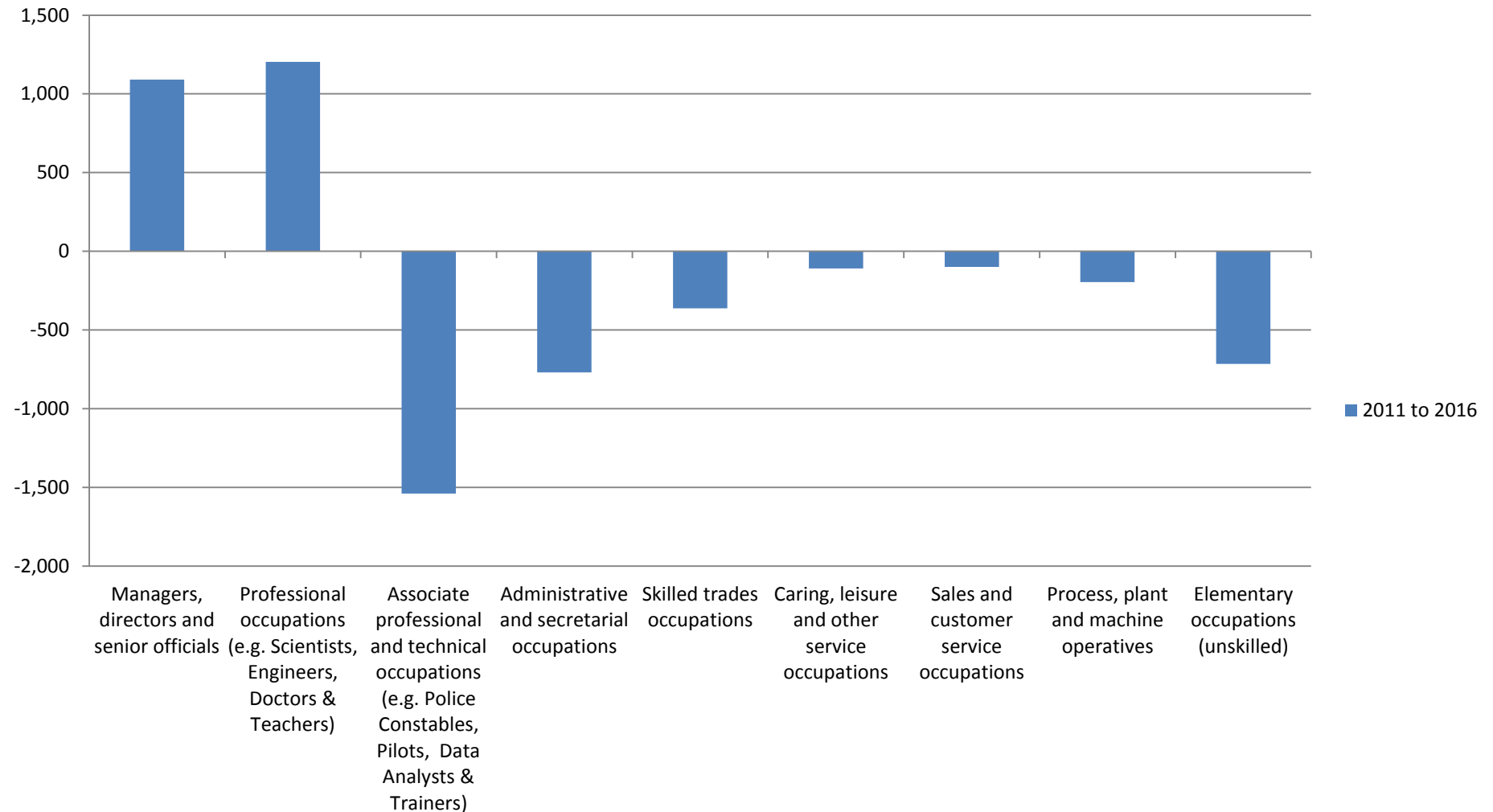
OUR ISLAND: A SPECIAL PLACE TO LIVE AND WORK

Working population by Economic Sector



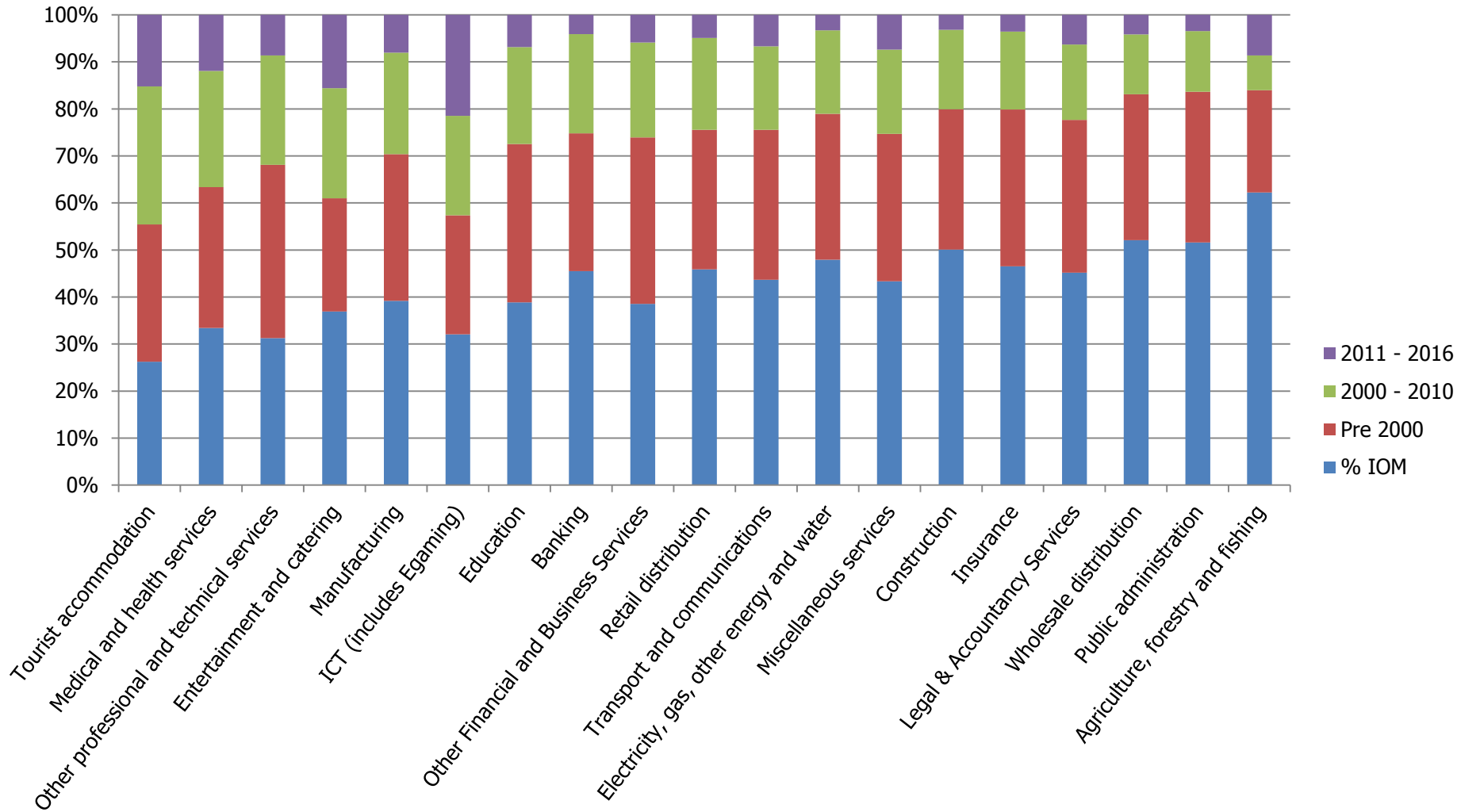
OUR ISLAND: A SPECIAL PLACE TO LIVE AND WORK

Changing nature of jobs undertaken



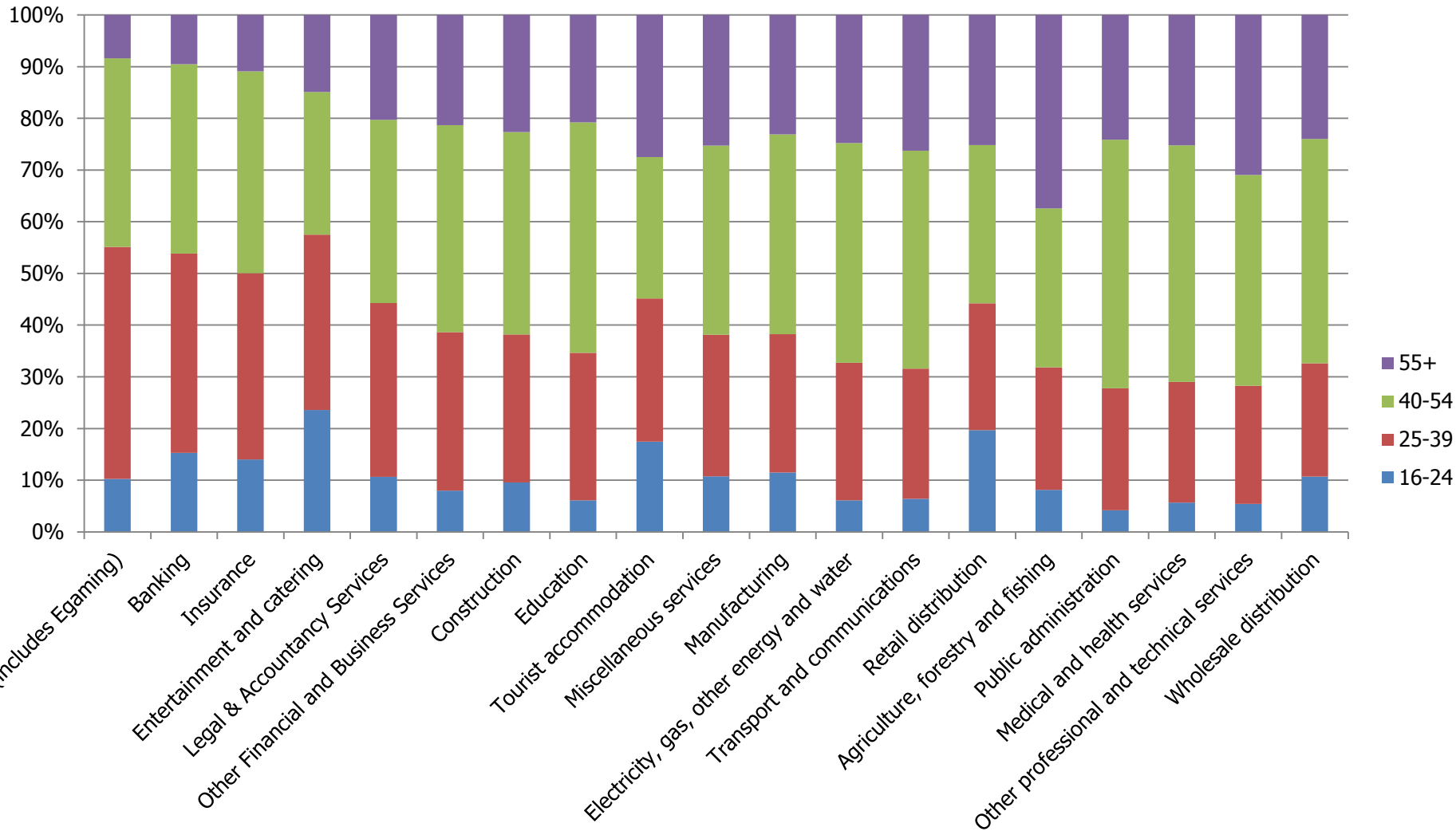
OUR ISLAND: A SPECIAL PLACE TO LIVE AND WORK

Economic Sector by Place of Birth and Year of Residency



OUR ISLAND: A SPECIAL PLACE TO LIVE AND WORK

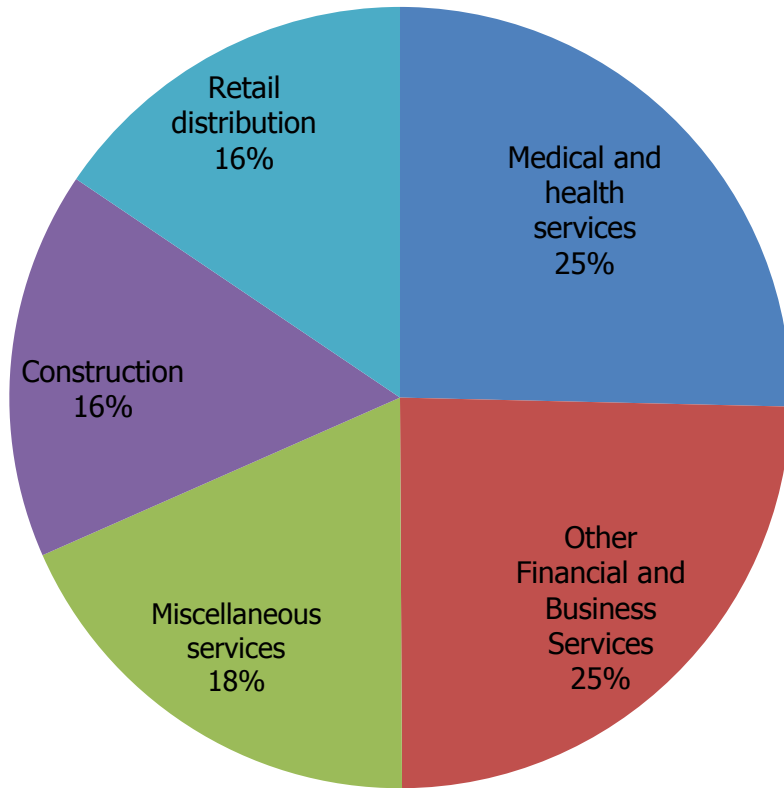
Economic Sector by Age



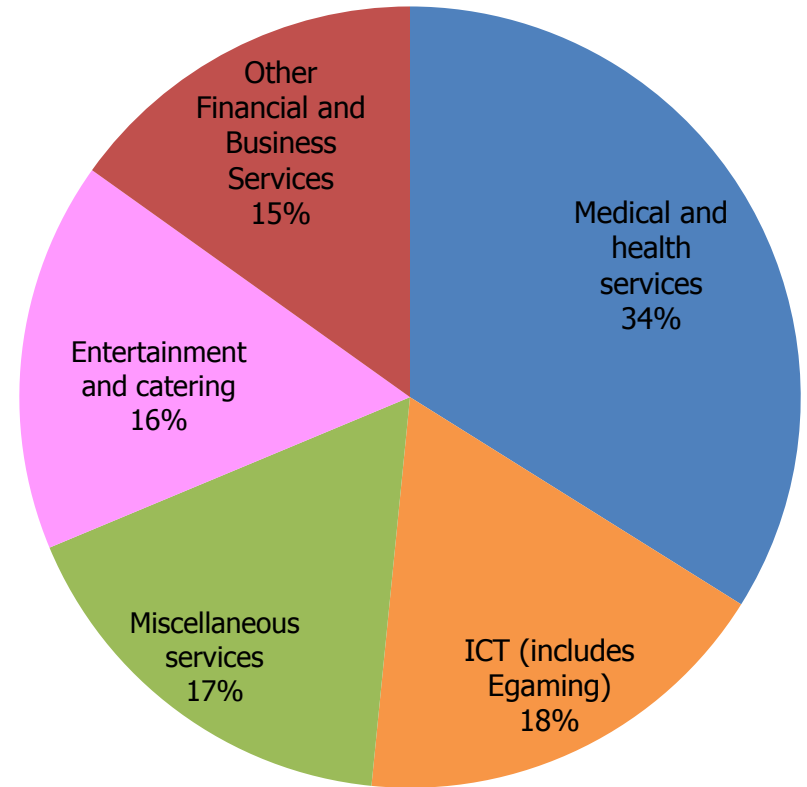
OUR ISLAND: A SPECIAL PLACE TO LIVE AND WORK

Migrant Working Population by Sector

Largest 5 Sectors for Migrants – Pre 2011 Arrival

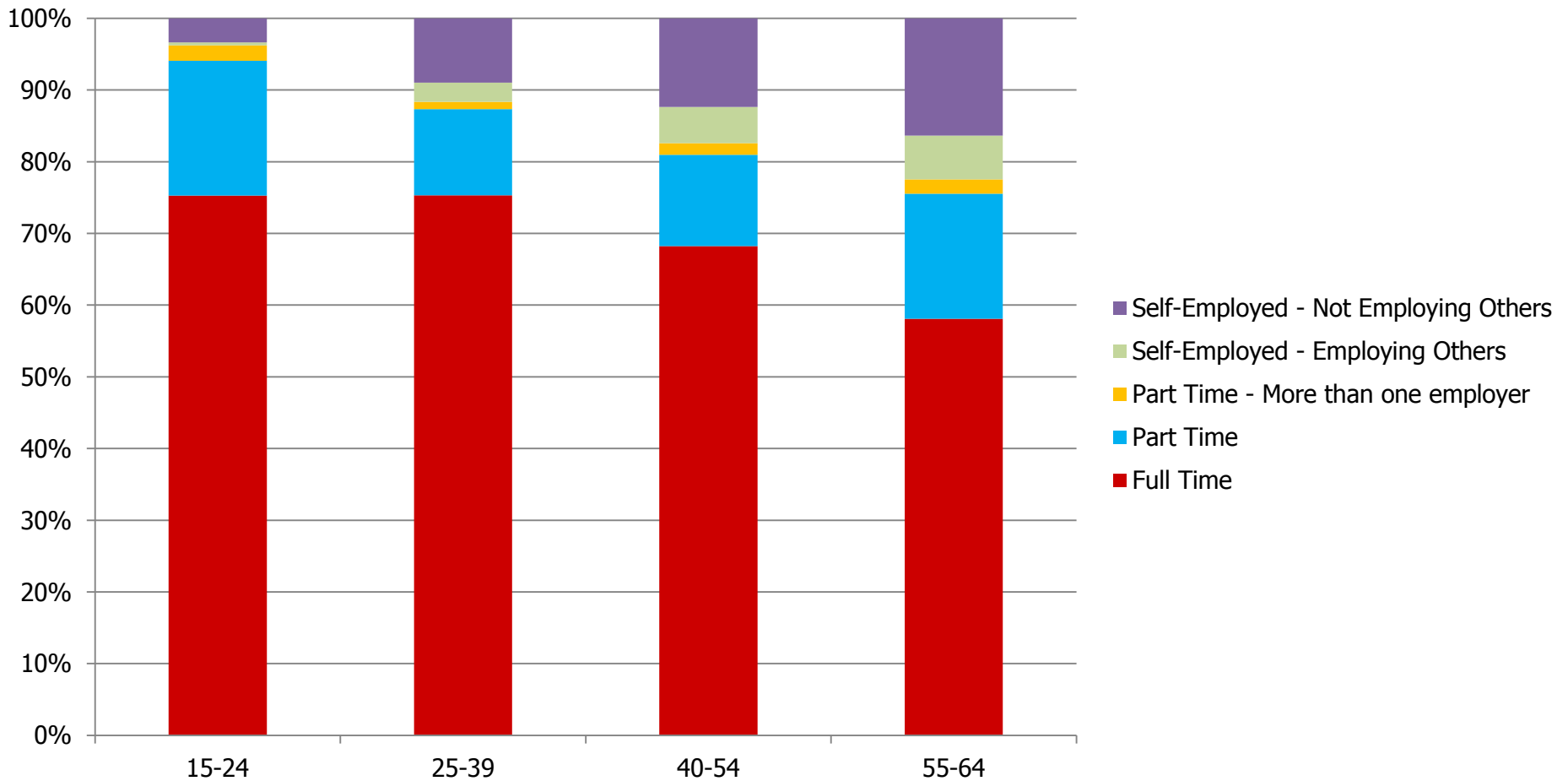


Largest 5 Sectors for Migrants - Post 2011 Arrival



OUR ISLAND: A SPECIAL PLACE TO LIVE AND WORK

Employment by Age Group



OUR ISLAND: A SPECIAL PLACE TO LIVE AND WORK

Internal Migration by Working Population

	Resident Pop	Net Daily Migration	Day Time Population	% Movement
Douglas	26,997	10,243	37,240	38%
Ramsey	7,845	-507	7,338	-6%
Peel	5,374	-1,257	4,117	-23%
Castletown	3,216	-122	3,094	-4%
Port Erin	3,484	-785	2,699	-23%
Port St Mary	1,916	-414	1,502	-22%
Laxey	1,676	-387	1,289	-23%
Onchan	9,128	-2,754	6,374	-30%
North	5,848	-1,610	4,238	-28%
South	6,251	-838	5,413	-13%
East	7,446	-748	6,698	-10%
West	4,133	-1,208	2,925	-29%
Off Island		387		

North: Lezayre, Jurby, Andreas, Bride and Maughold

South: Malew, Arbory and Rushen

East: Braddan, Lonan, Marown and Santon

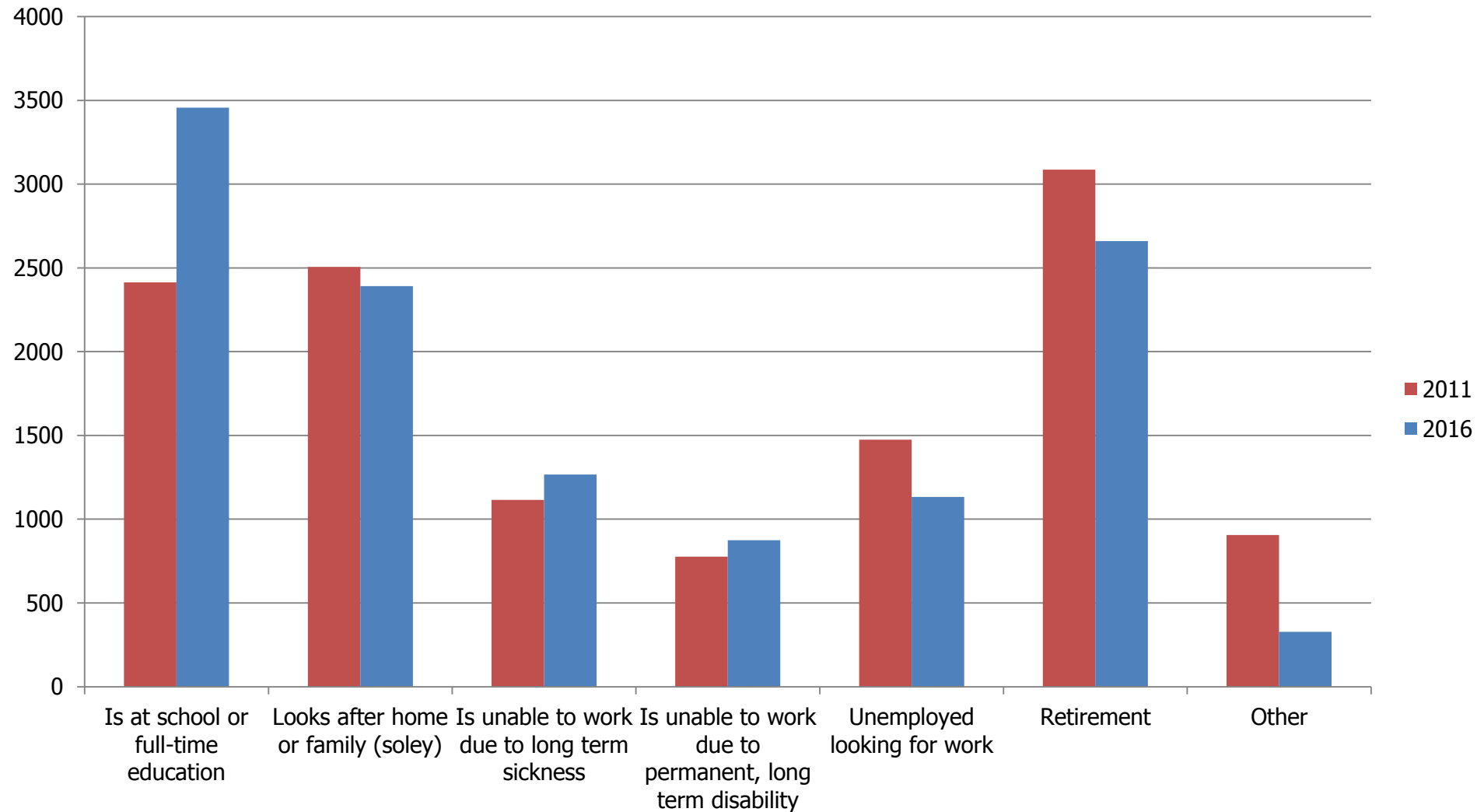
West: Michael, German and Patrick

Parishes have been grouped based on their categorisation in the Area Plans.



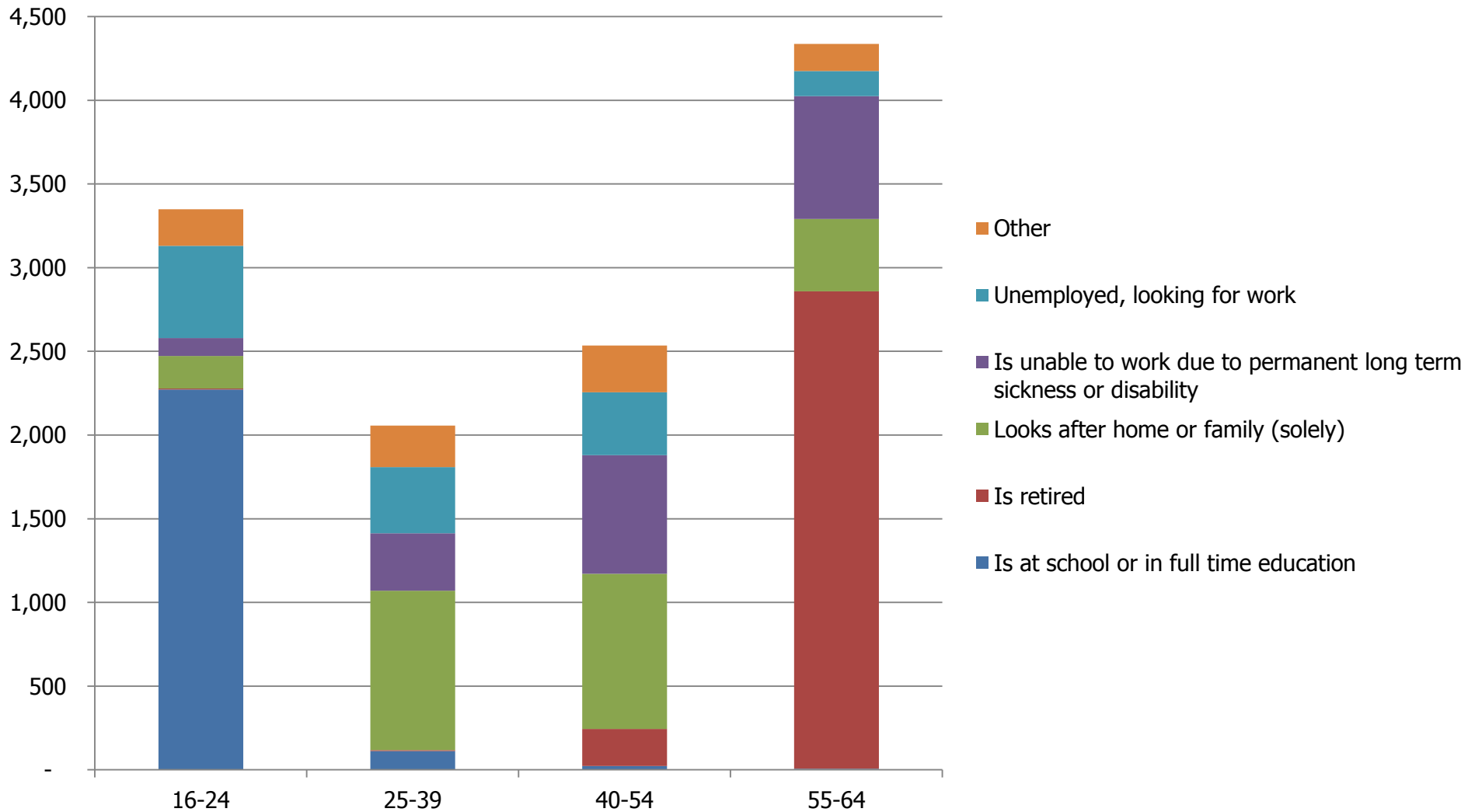
OUR ISLAND: A SPECIAL PLACE TO LIVE AND WORK

Reason for Not being in Work (16-64)



OUR ISLAND: A SPECIAL PLACE TO LIVE AND WORK

Reason for Not being in Work by Age



OUR ISLAND: A SPECIAL PLACE TO LIVE AND WORK

Key Points

- Significant emigration of 20-29 year olds
- Increasing numbers of over 95s
- Falling birth rate
- Changing nature of the jobs undertaken
- Growth employment areas are those with the highest levels of immigration.

