

NOTES

1. This drawing is to be read in conjunction with all relevant Engineers, Architects and Proprietary manufacturers drawings. Any discrepancies are to be raised with the project manager or appointed representative.
2. This drawing should be read in conjunction with the diversion plan showing the byout with no access to Mines Road from the south.

Key:

- Temporary road markings
- Temporary Road Surface
- Proposed carriageway finished in Asphalt/Concrete
- Temporary Pedestrian Route
- Works Area
- Traffic barrier
- Safety fencing
- Sign mounted at high level (min 2.3m) for visibility
- No walking bolted

Q7T13	RED E20	20	
Q7T12	RED E20	20	
Q7T11	RED E20	20	
Q7T10	RED E20	20	
Q7T9	RED E20	20	
Q7T8	RED E20	20	
Q7T7	RED E20	20	
Q7T6	RED E20	20	
Q7T5	RED E20	20	
Q7T4	RED E20	20	
Q7T3	RED E20	20	
Q7T2	RED E20	20	
Q7T1	RED E20	20	
Q7T0	RED E20	20	
Q7T-1	RED E20	20	
Q7T-2	RED E20	20	
Q7T-3	RED E20	20	
Q7T-4	RED E20	20	
Q7T-5	RED E20	20	
Q7T-6	RED E20	20	
Q7T-7	RED E20	20	
Q7T-8	RED E20	20	
Q7T-9	RED E20	20	
Q7T-10	RED E20	20	
Q7T-11	RED E20	20	
Q7T-12	RED E20	20	
Q7T-13	RED E20	20	
Q7T-14	RED E20	20	
Q7T-15	RED E20	20	
Q7T-16	RED E20	20	
Q7T-17	RED E20	20	
Q7T-18	RED E20	20	
Q7T-19	RED E20	20	
Q7T-20	RED E20	20	
Q7T-21	RED E20	20	
Q7T-22	RED E20	20	
Q7T-23	RED E20	20	
Q7T-24	RED E20	20	
Q7T-25	RED E20	20	
Q7T-26	RED E20	20	
Q7T-27	RED E20	20	
Q7T-28	RED E20	20	
Q7T-29	RED E20	20	
Q7T-30	RED E20	20	
Q7T-31	RED E20	20	
Q7T-32	RED E20	20	
Q7T-33	RED E20	20	
Q7T-34	RED E20	20	
Q7T-35	RED E20	20	
Q7T-36	RED E20	20	
Q7T-37	RED E20	20	
Q7T-38	RED E20	20	
Q7T-39	RED E20	20	
Q7T-40	RED E20	20	
Q7T-41	RED E20	20	
Q7T-42	RED E20	20	
Q7T-43	RED E20	20	
Q7T-44	RED E20	20	
Q7T-45	RED E20	20	
Q7T-46	RED E20	20	
Q7T-47	RED E20	20	
Q7T-48	RED E20	20	
Q7T-49	RED E20	20	
Q7T-50	RED E20	20	
Q7T-51	RED E20	20	
Q7T-52	RED E20	20	
Q7T-53	RED E20	20	
Q7T-54	RED E20	20	
Q7T-55	RED E20	20	
Q7T-56	RED E20	20	
Q7T-57	RED E20	20	
Q7T-58	RED E20	20	
Q7T-59	RED E20	20	
Q7T-60	RED E20	20	
Q7T-61	RED E20	20	
Q7T-62	RED E20	20	
Q7T-63	RED E20	20	
Q7T-64	RED E20	20	
Q7T-65	RED E20	20	
Q7T-66	RED E20	20	
Q7T-67	RED E20	20	
Q7T-68	RED E20	20	
Q7T-69	RED E20	20	
Q7T-70	RED E20	20	
Q7T-71	RED E20	20	
Q7T-72	RED E20	20	
Q7T-73	RED E20	20	
Q7T-74	RED E20	20	
Q7T-75	RED E20	20	
Q7T-76	RED E20	20	
Q7T-77	RED E20	20	
Q7T-78	RED E20	20	
Q7T-79	RED E20	20	
Q7T-80	RED E20	20	
Q7T-81	RED E20	20	
Q7T-82	RED E20	20	
Q7T-83	RED E20	20	
Q7T-84	RED E20	20	
Q7T-85	RED E20	20	
Q7T-86	RED E20	20	
Q7T-87	RED E20	20	
Q7T-88	RED E20	20	
Q7T-89	RED E20	20	
Q7T-90	RED E20	20	
Q7T-91	RED E20	20	
Q7T-92	RED E20	20	
Q7T-93	RED E20	20	
Q7T-94	RED E20	20	
Q7T-95	RED E20	20	
Q7T-96	RED E20	20	
Q7T-97	RED E20	20	
Q7T-98	RED E20	20	
Q7T-99	RED E20	20	
Q7T-100	RED E20	20	

Ref.	Preliminary/For Comment	Revision	Date	By	CHK.
AMENDMENTS					

Status: **Construction**

infrastructure
highway services
bun trogaigys ~ shirvestshyn raiidley

Highway Services - Design
Eileasle Depot
Crosby
Isle of Man
IM4 2HA
Telephone: (01624) 686681

Client: Highway Services

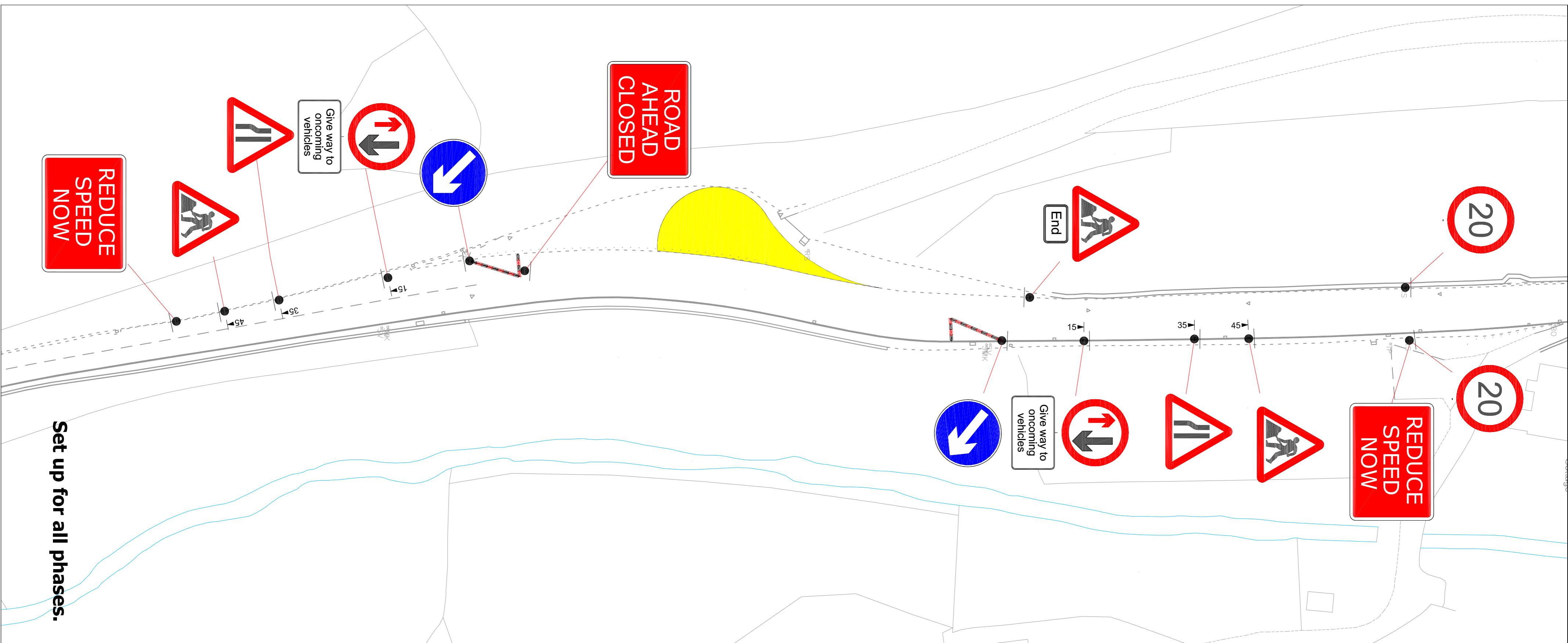
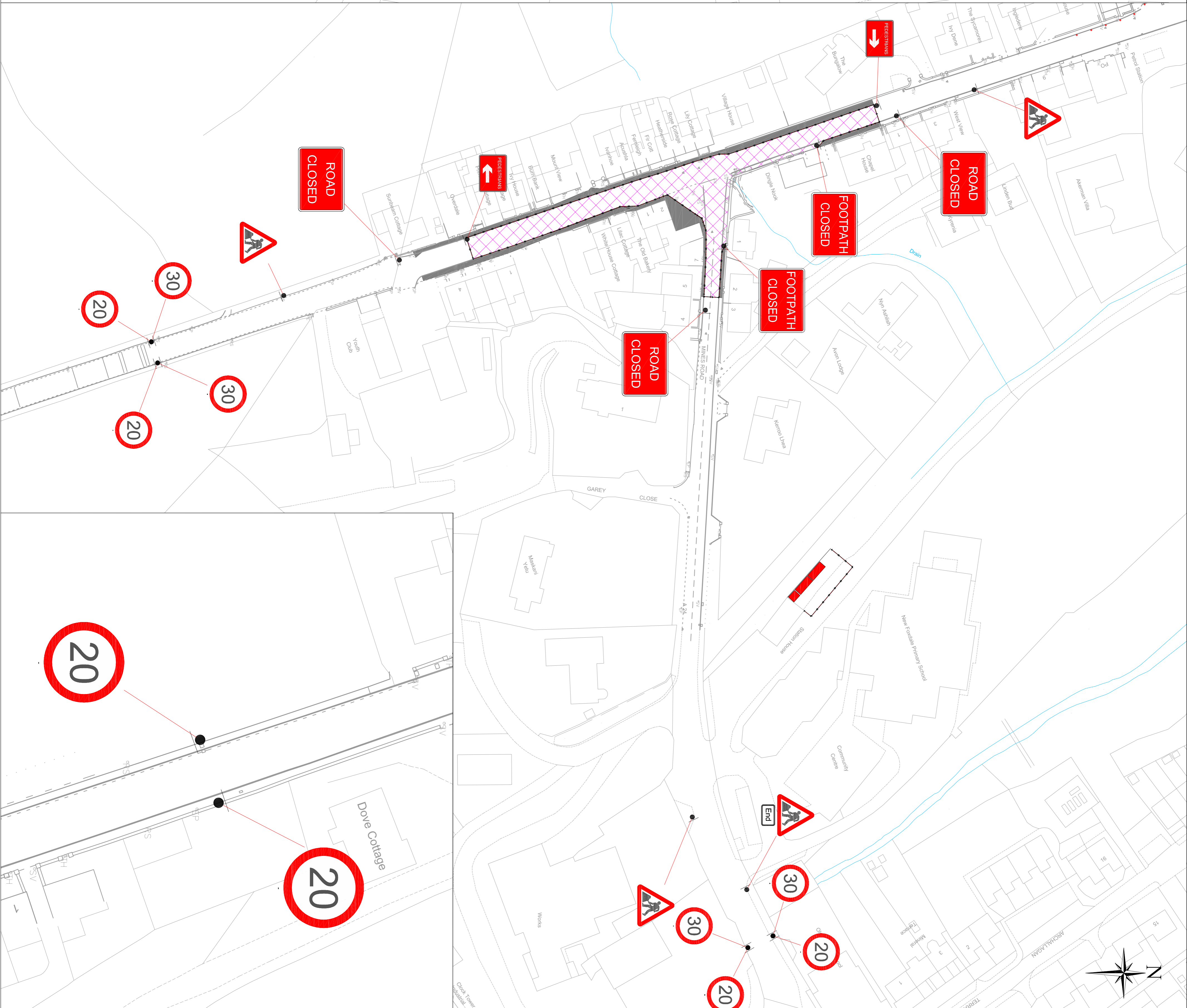
Job Title: A3 Main Road, Foxdale
Dove Cottage to Costains Yard

Drawing Title: Site Set Up
Phase 1A/1B

Drawn by: KO Date: Sept 2016

Checked by: Scale: Not to scale

Job Ref: HW2868 Drawing No: SS01



Set up for all phases.