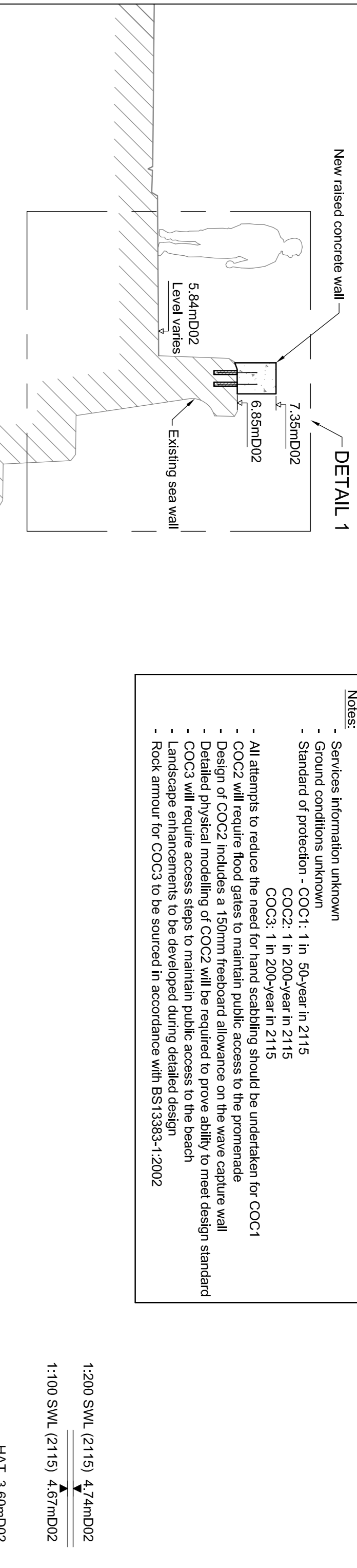
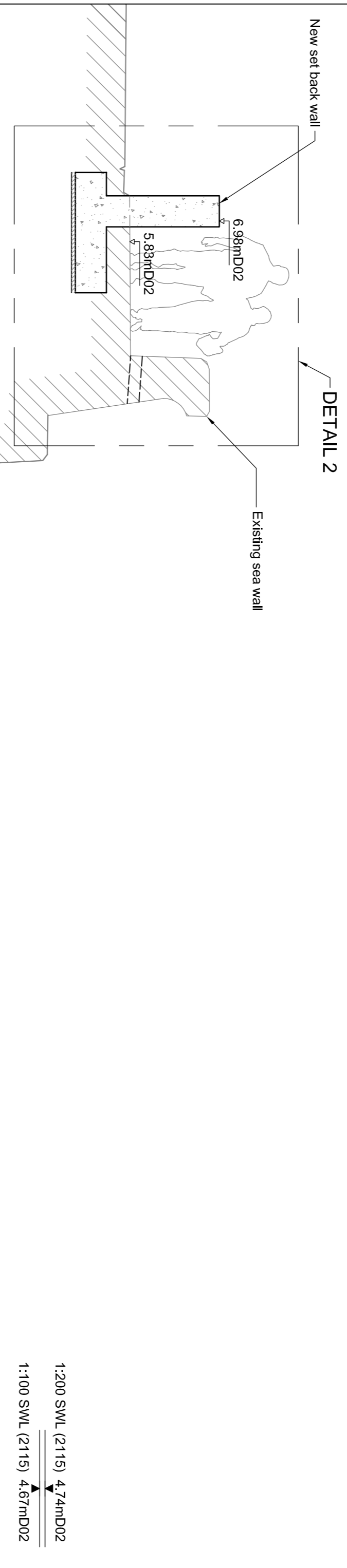


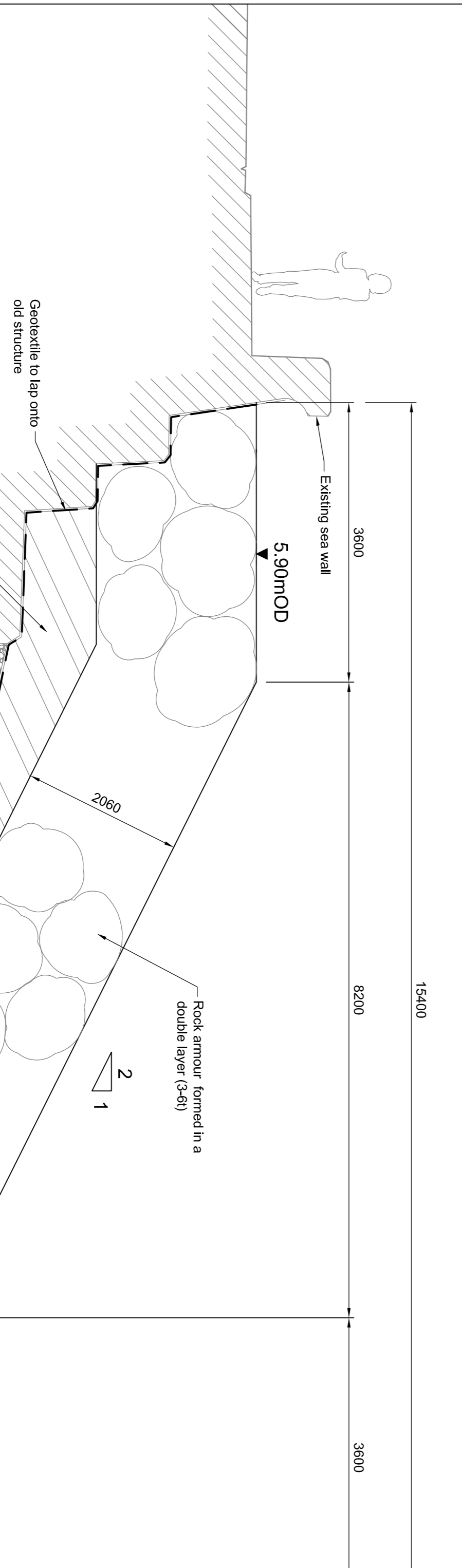
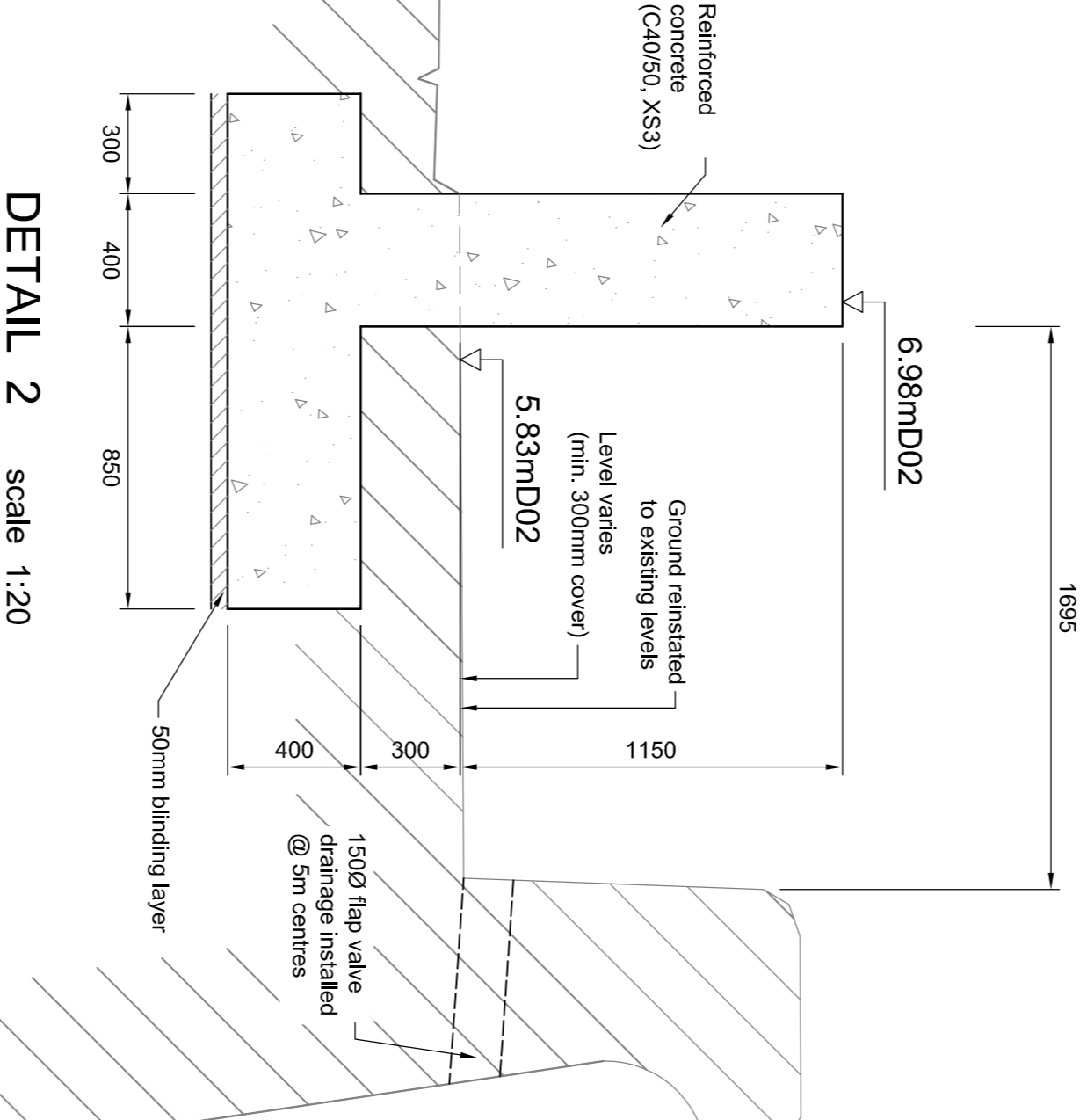
- Notes:**
- Services information unknown
 - Ground conditions unknown
 - Standard of protection - COC2: 1 in 200-year in 2115
COC3: 1 in 200-year in 2115
 - All attempts to reduce the need for hand scabbling should be undertaken for COC1
 - COC2 will require flood gates to maintain public access to the promenade
 - Design of COC2 includes a 150mm freeboard allowance on the wave capture wall
 - Detailed physical modelling of COC2 will be required to prove ability to meet design standard
 - COC3 will require access steps to maintain public access to the beach
 - Landscape enhancements to be developed during detailed design
 - Rock armour for COC3 to be sourced in accordance with BS13383-1:2002



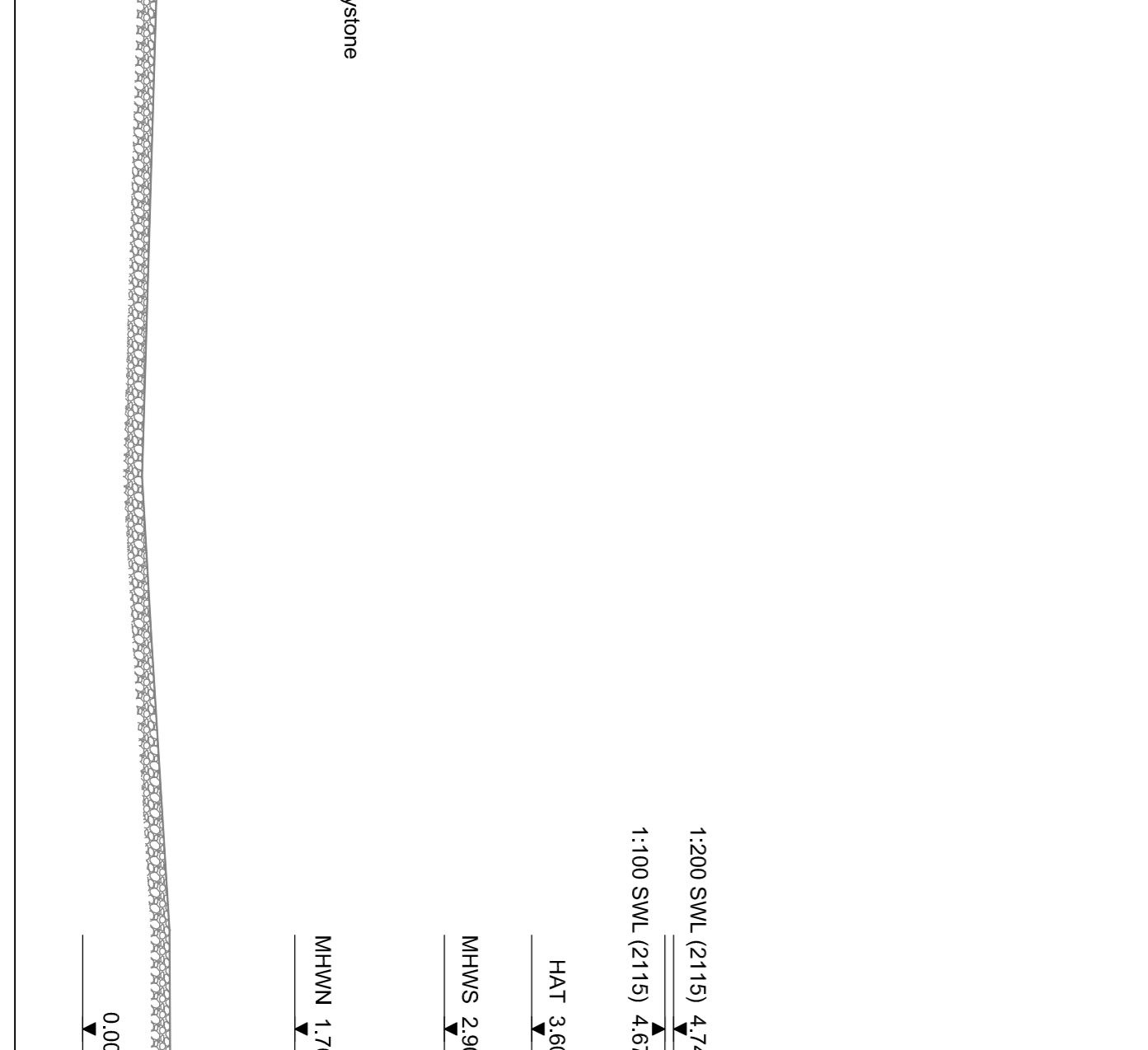
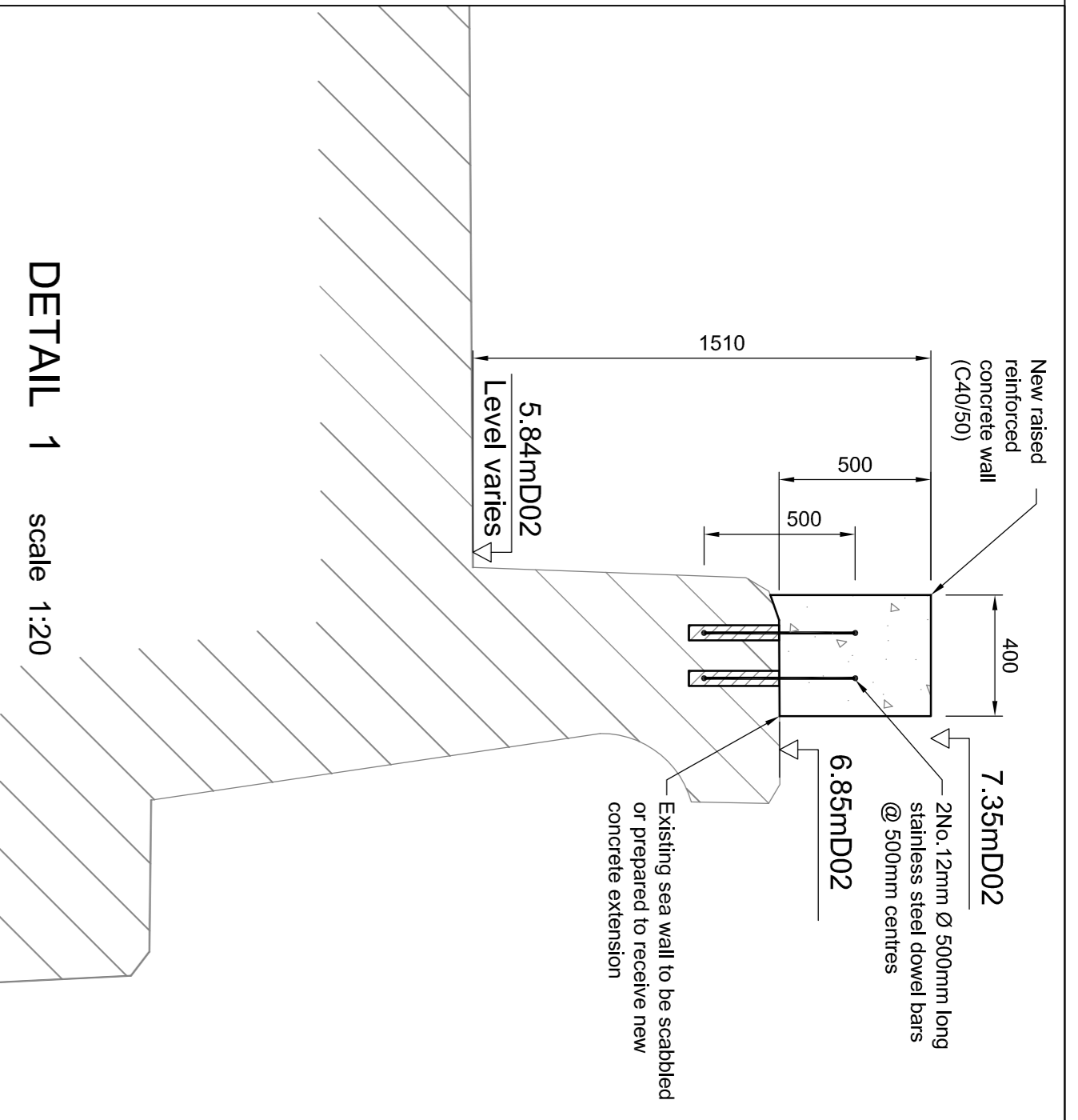
**TYPICAL SECTION A - A
OPTION COC1 - RAISED SEA WALL**
scale 1:50



**TYPICAL SECTION A - A
OPTION COC2 - SET BACK WALL**
scale 1:50



**TYPICAL SECTION A - A
OPTION COC3 - ROCK REVETMENT**
scale 1:50



- Restrict access and egress through narrow streets around Castletown
 - Working in an exposed coastal environment
 - Unknown ground conditions
 - Unknown ground conditions and working at height
 - Services information currently unknown
 - Placement of rock armour
 - Public interaction with rock armour
 - Working adjacent to public right of way
 - Minimum height of wall above ground level to be no less than 1100mm
 - Pollution hazards associated with working near the sea
 - Risk of damage to flora and fauna
- Construction Risks**
- In addition to the hazards risks normally associated with the types of work detailed on this drawing, the following risks are associated with the works detailed on this drawing.
 - It is assumed that all works detailed on this drawing will be carried out by a competent contractor working, where appropriate, to an appropriate method statement.
- Public Risks**
- Environmental Risks

DETAIL 1 scale 1:20

DETAIL 2 scale 1:20

General Notes

- All dimensions shown are in millimetres unless otherwise stated and levels are in metres to Douglas02 Datum.
- Do not scale from this drawing. All dimensions must be checked/verified on site.
- Drawing to be read in conjunction with IOM-JBA-COC-DR-C-01
- All works in watercourses will be carried out with care to minimise the risk of pollution adhering to Pollution Prevention Guidelines.
- All works affecting flood defences, main watercourses and/or ordinary watercourses require consent from the Environment Agency (EA) under the Land Drainage Act 1994.
- The locations of any known services shown on drawing are approximate and for guidance only. The Contractor will confirm the location of any services prior to the commencement of any works.
- The electronic model of this drawing is not to be used for setting out.

SAFETY, HEALTH AND ENVIRONMENTAL INFORMATION BOX

Rev. No.	Date	By	Checked	Approved	Comments
Rev. 1	10/10/14	M.J. Siskner			
Rev. 2	28/11/14	G. Kern			
Rev. 3	27/11/14	G. Kern			

Client Approval

Rev. No.	Date	Drawn	Designed	Checked	Approved
Rev. 1	10/10/14	M.J. Siskner			
Rev. 2	28/11/14	G. Kern			
Rev. 3	27/11/14	G. Kern			

Purpose of Issue

Rev. No.	Date	By	Checked	Approved	Comments
Rev. 1	10/10/14	M.J. Siskner			
Rev. 2	28/11/14	G. Kern			
Rev. 3	27/11/14	G. Kern			

JBA CONSULTING

Aberteen House
Scrum Road
Southampton SO9 5YU
West Sussex
United Kingdom
www.jbaconsulting.com
1 444 (0) 1444 473652
1 444 (0) 2645 852772
info@jbaconsulting.com

Offices in: Central London, Edinburgh, Glasgow, Heathrow, Leeds, Liverpool, Newcastle upon Tyne, Newport, Swansea, Stirling, Aberdeen, Perth, York, Wokingham and Wrexham.

ISLE OF MAN GOVERNMENT - SEA DEFENCE OPTIONS

CASTLETOWN
OPEN COAST SECTIONS

for _____

ISLE OF MAN GOVERNMENT
DEPARTMENT OF INFRASTRUCTURE

Drawing Number: **IOM-JBA-COC-DR-C-02**

Digital File Name: 2014s1358

Scale: **As shown @ A1**

20/10/14
10/10/14
28/11/14
27/11/14

M.J. Siskner
A. Dane
G. Kern
G. Kern

Revision