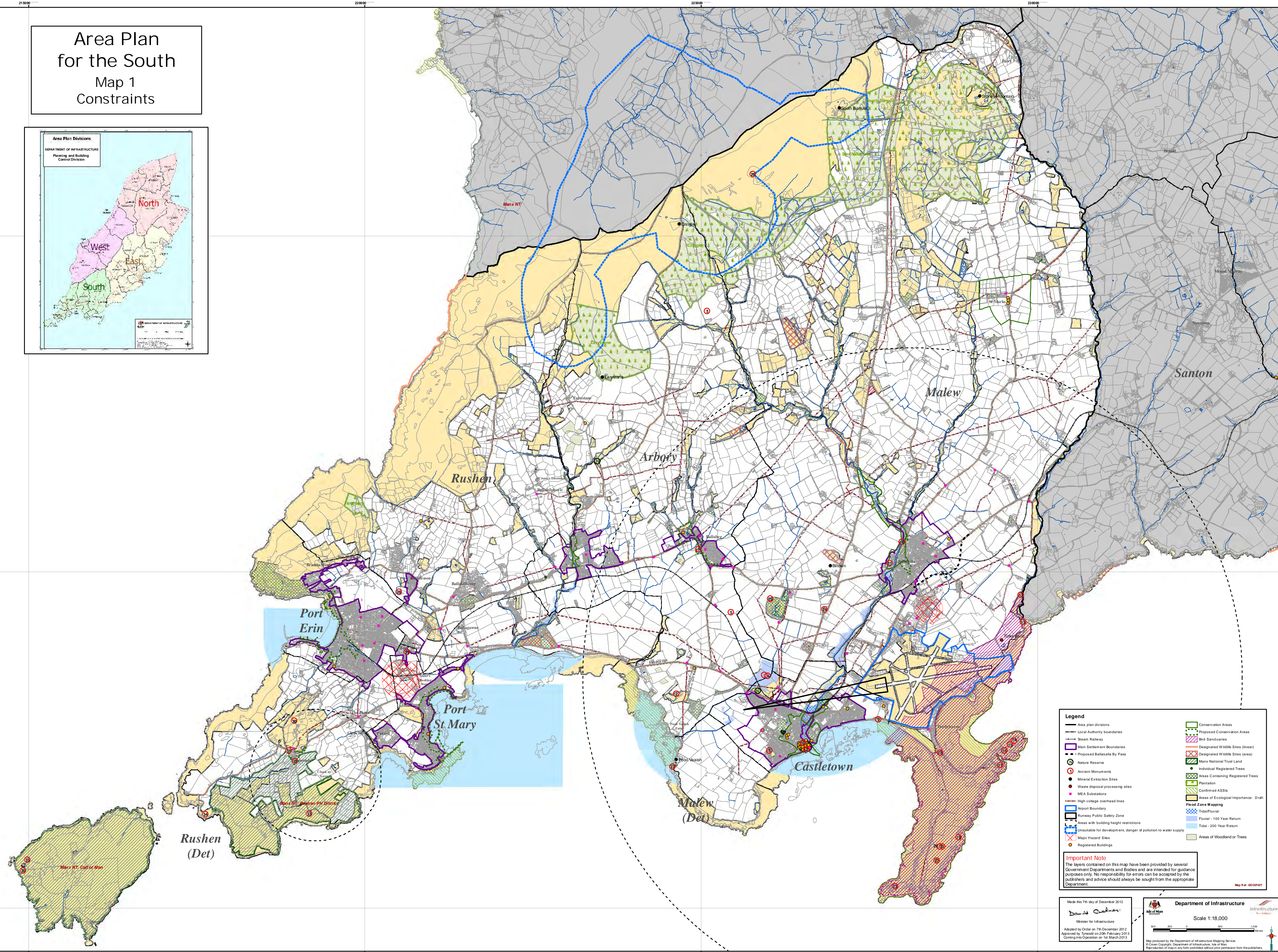


Area Plan for the South Map 1 Constraints



Legend

- Area plan divisions
- Local Authority boundaries
- Seam Railway
- Main Settlement Boundaries
- Proposed Ballasta By Pass
- Nature Reserve
- Ancient Monuments
- Mineral Extraction Sites
- Waste disposal/processing sites
- MEA Substations
- High voltage overhead lines
- Airport Boundary
- Runway Public Safety Zone
- Areas with building height restrictions
- Unsuitable for development, danger of pollution to water supply
- Major Hazard Sites
- Registered Buildings
- Conservation Areas
- Proposed Conservation Areas
- Bird Sanctuaries
- Designated Wildlife Sites (linear)
- Designated Wildlife Sites (area)
- Manx National Trust Land
- Individual Registered Trees
- Areas Containing Registered Trees
- Plantation
- Confirmed ASSIs
- Areas of Ecological Importance - Draft
- Flood Zone Mapping**
- Tidal/Fluvial
- Fluvial - 100 Year Return
- Tidal - 200 Year Return
- Areas of Woodland or Trees

Important Note
The layers cartored on this map have been provided by several Government Departments and Bodies and are intended for guidance purposes only. No responsibility for errors can be accepted by the publishers and advice should always be sought from the appropriate Department.

Map #4: GD0507

Made this 7th day of December 2012

 Minister for Infrastructure

Department of Infrastructure
 Scale 1:18,000

Map produced by the Department of Infrastructure Mapping Service.
 © Crown Copyright, Department of Infrastructure, Isle of Man.
 Reproduction of maps and any other material without prior permission from the publishers.