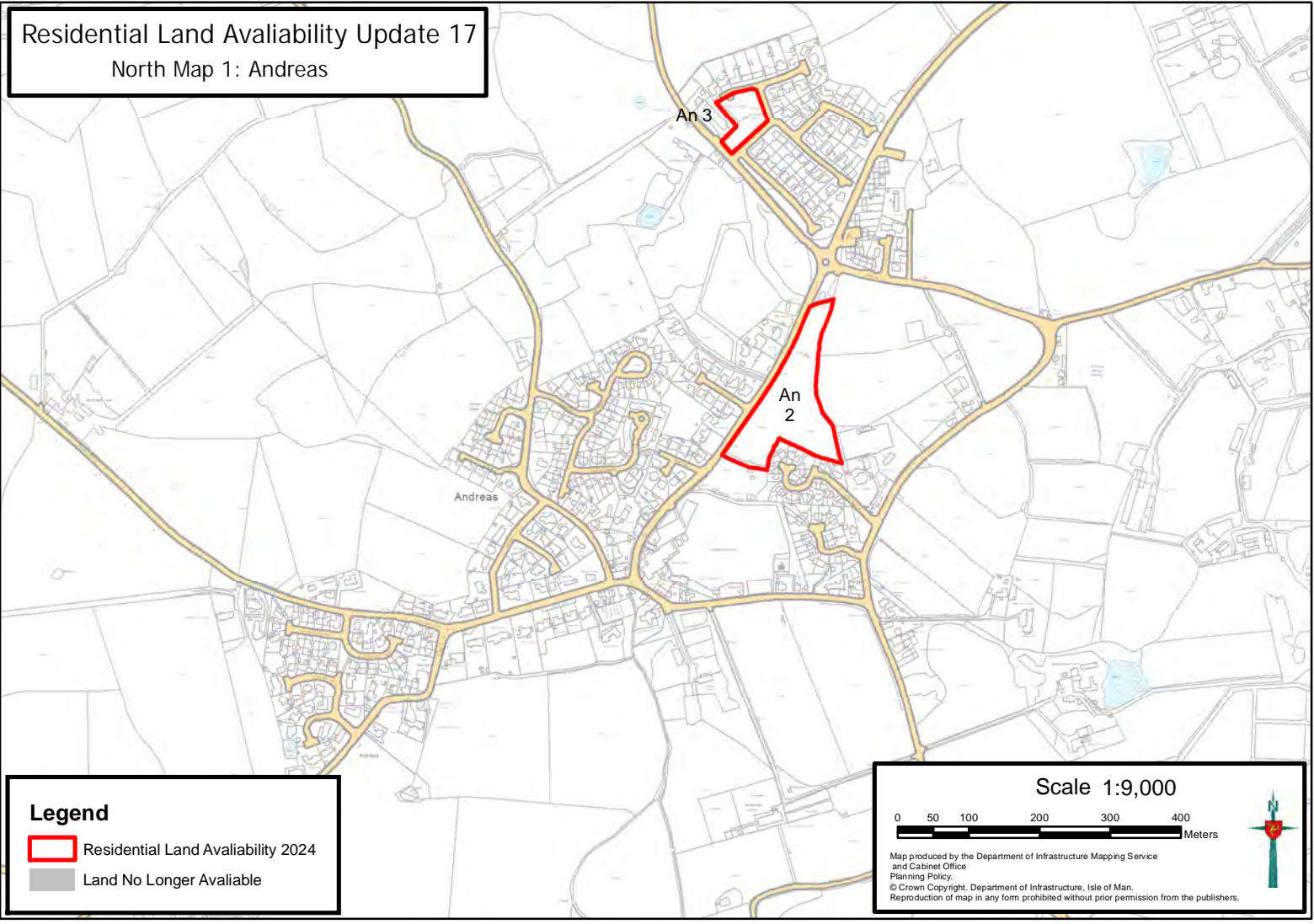




Residential Land Availability Update 17

North Map 1: Andreas



Legend

-  Residential Land Availability 2024
-  Land No Longer Available

Scale 1:9,000

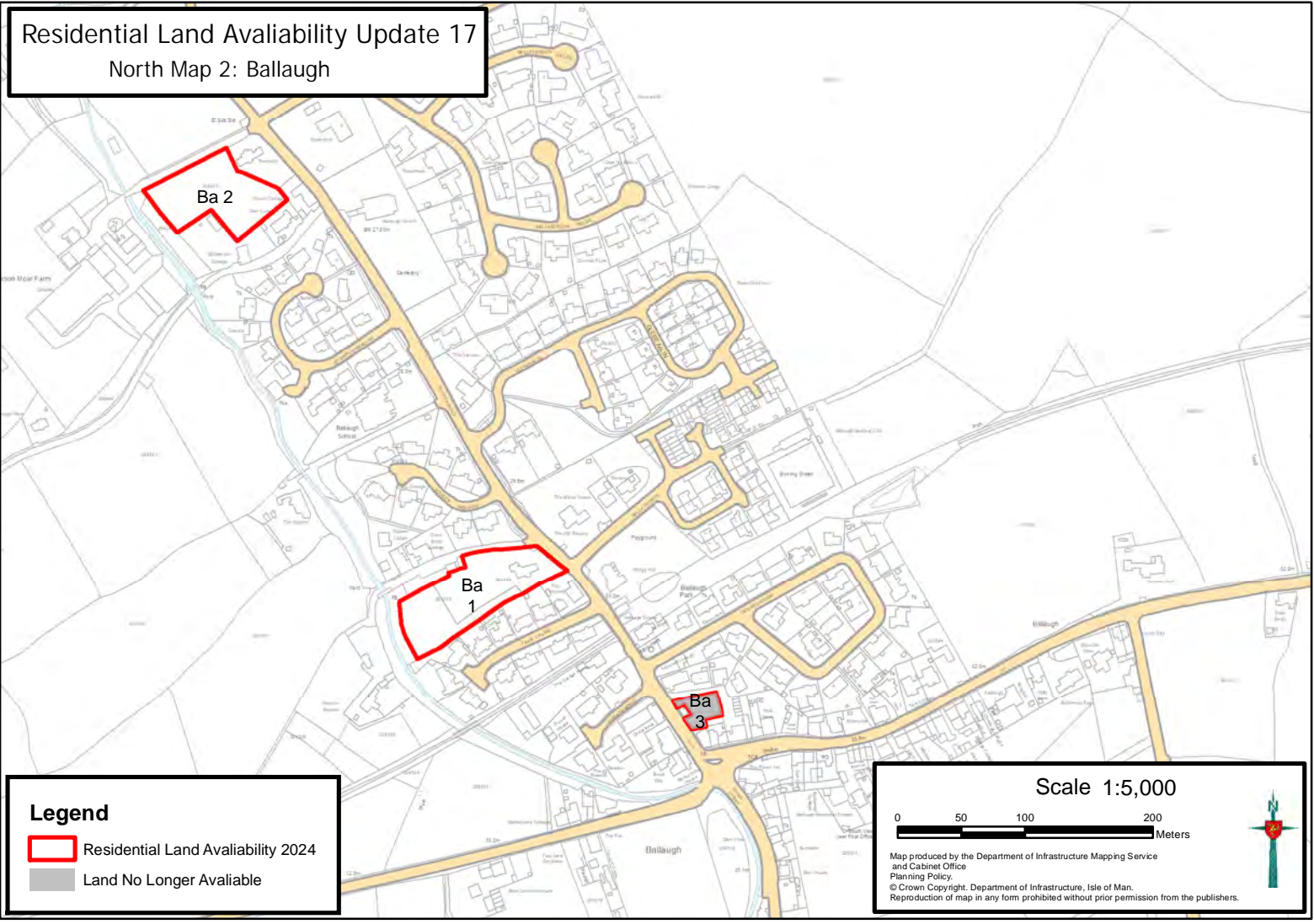


Map produced by the Department of Infrastructure Mapping Service and Cabinet Office Planning Policy.
© Crown Copyright, Department of Infrastructure, Isle of Man.
Reproduction of map in any form prohibited without prior permission from the publishers.





Residential Land Availability Update 17

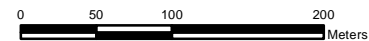
North Map 2: Ballaugh



Legend

-  Residential Land Availability 2024
-  Land No Longer Available

Scale 1:5,000

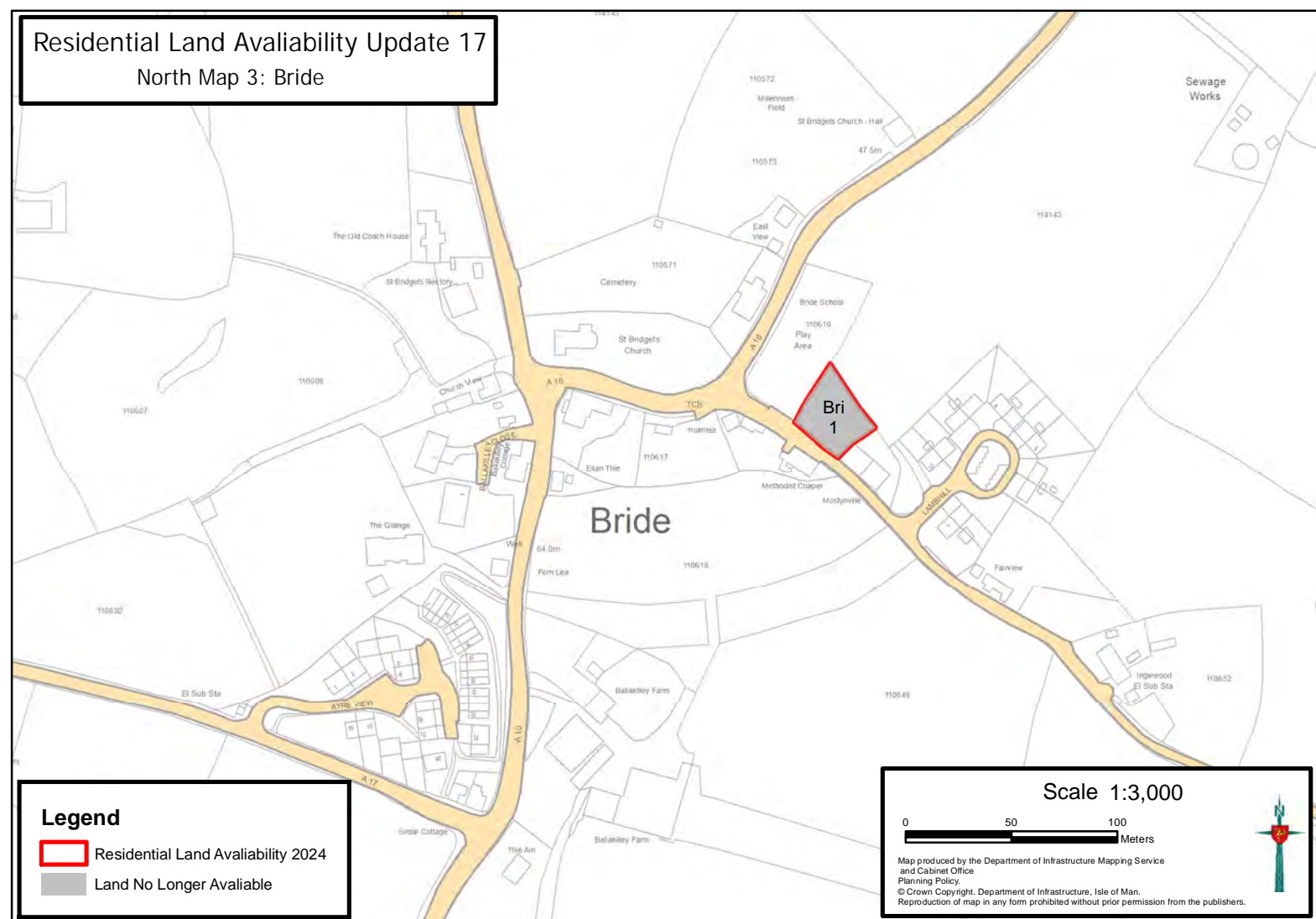


Map produced by the Department of Infrastructure Mapping Service and Cabinet Office Planning Policy.
© Crown Copyright, Department of Infrastructure, Isle of Man.
Reproduction of map in any form prohibited without prior permission from the publishers.





Residential Land Availability Update 17

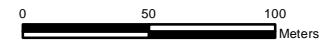
North Map 3: Bride



Legend

-  Residential Land Availability 2024
-  Land No Longer Available

Scale 1:3,000

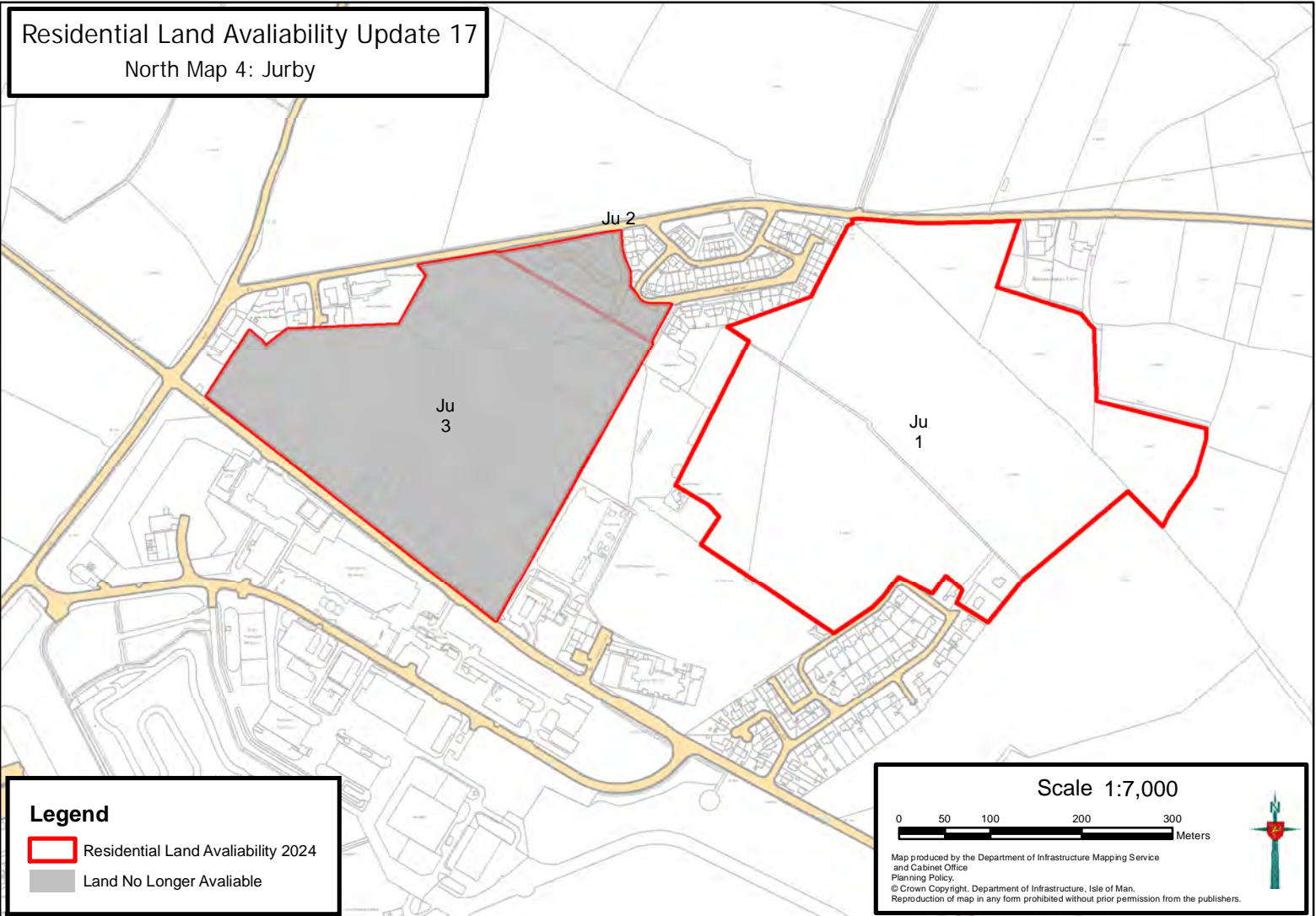


Map produced by the Department of Infrastructure Mapping Service and Cabinet Office Planning Policy.
© Crown Copyright, Department of Infrastructure, Isle of Man.
Reproduction of map in any form prohibited without prior permission from the publishers.





Residential Land Availability Update 17

North Map 4: Jurby



Legend

-  Residential Land Availability 2024
-  Land No Longer Available

Scale 1:7,000



Map produced by the Department of Infrastructure Mapping Service and Cabinet Office Planning Policy.
© Crown Copyright, Department of Infrastructure, Isle of Man.
Reproduction of map in any form prohibited without prior permission from the publishers.



Residential Land Availability Update 17



North Map 5: Lezayre (Sulby)

Le 3
Sulby

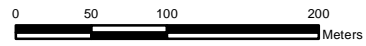
Le 4

Le 5

Legend

-  Residential Land Availability 2024
-  Land No Longer Available

Scale 1:5,000

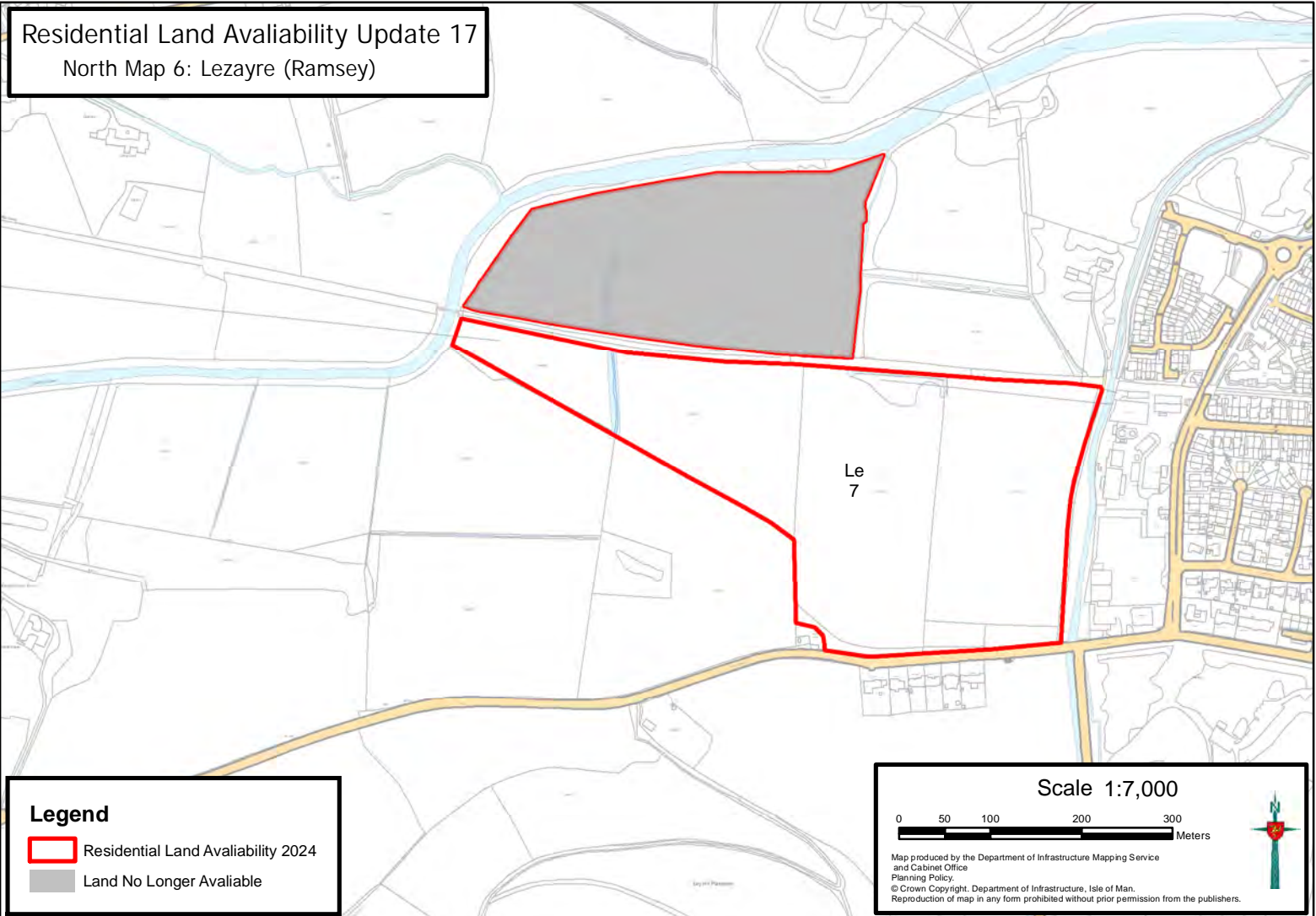


Map produced by the Department of Infrastructure Mapping Service and Cabinet Office Planning Policy.
© Crown Copyright, Department of Infrastructure, Isle of Man.
Reproduction of map in any form prohibited without prior permission from the publishers.





Residential Land Availability Update 17

North Map 6: Lezayre (Ramsey)



Legend

-  Residential Land Availability 2024
-  Land No Longer Available

Scale 1:7,000

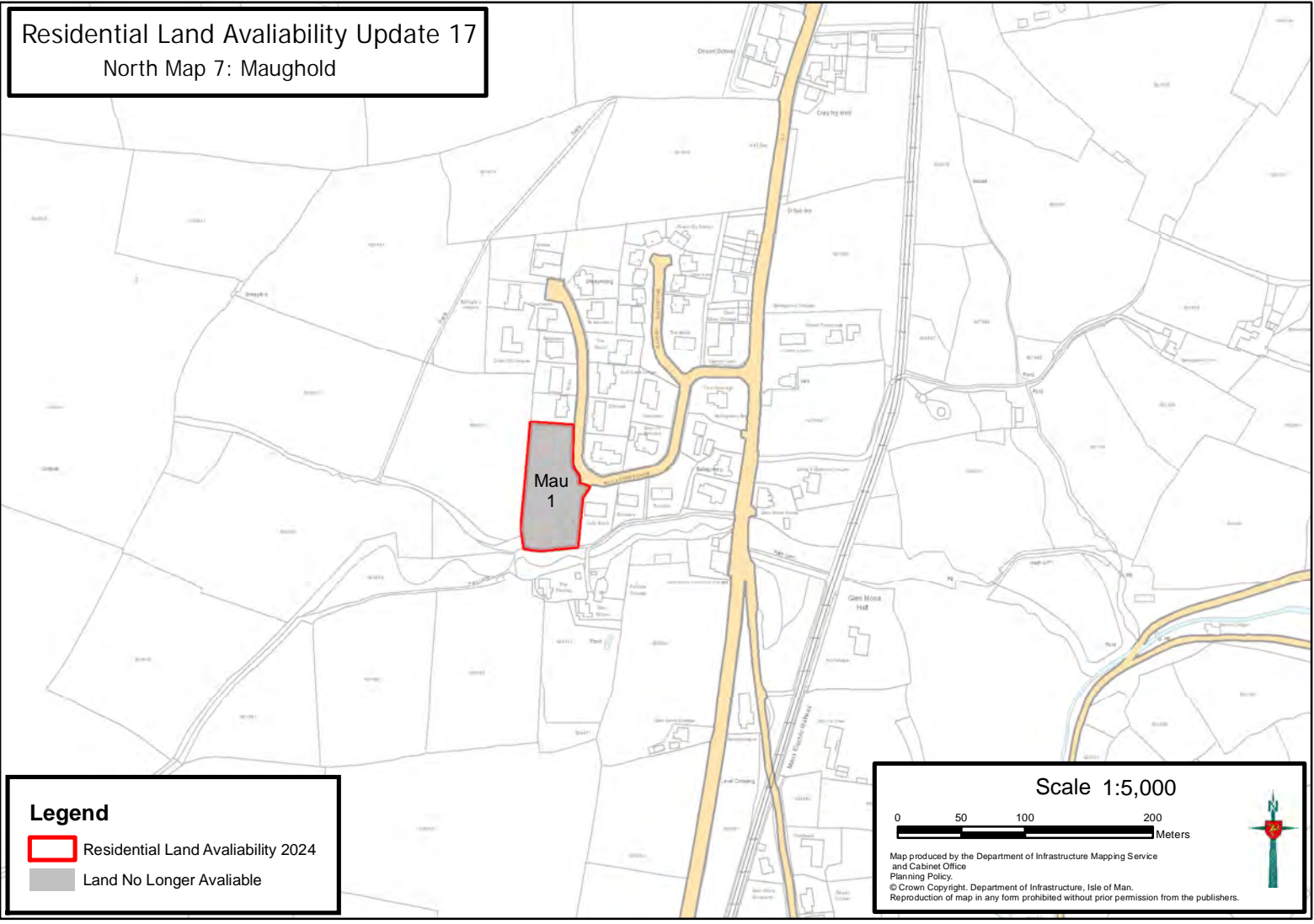


Map produced by the Department of Infrastructure Mapping Service and Cabinet Office Planning Policy.
© Crown Copyright, Department of Infrastructure, Isle of Man.
Reproduction of map in any form prohibited without prior permission from the publishers.





Residential Land Availability Update 17

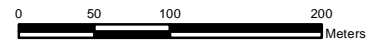
North Map 7: Maughold



Legend

-  Residential Land Availability 2024
-  Land No Longer Available

Scale 1:5,000

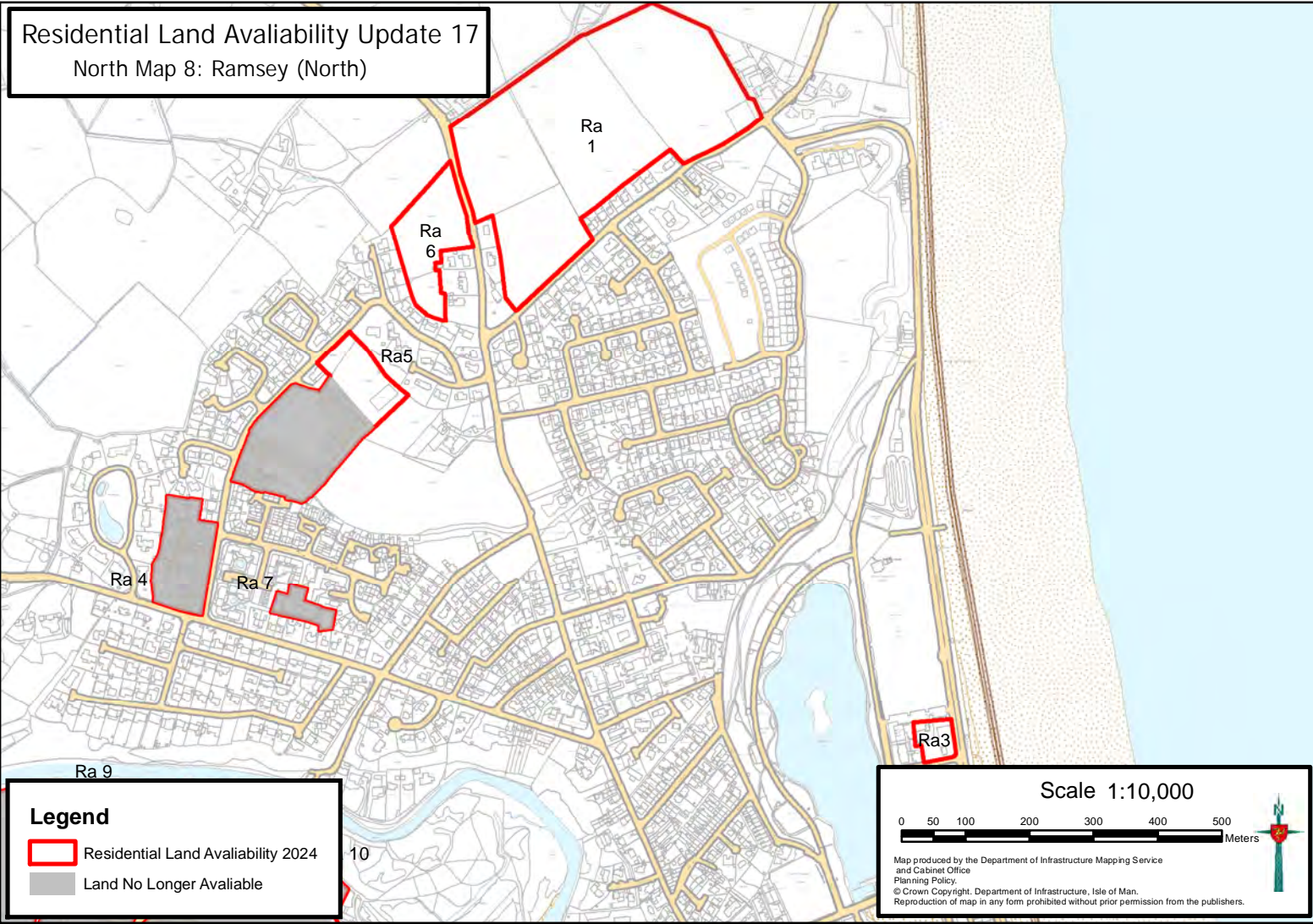


Map produced by the Department of Infrastructure Mapping Service and Cabinet Office Planning Policy.
© Crown Copyright, Department of Infrastructure, Isle of Man.
Reproduction of map in any form prohibited without prior permission from the publishers.





Residential Land Availability Update 17

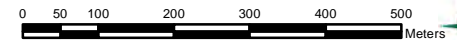
North Map 8: Ramsey (North)



Legend

-  Residential Land Availability 2024
-  Land No Longer Available

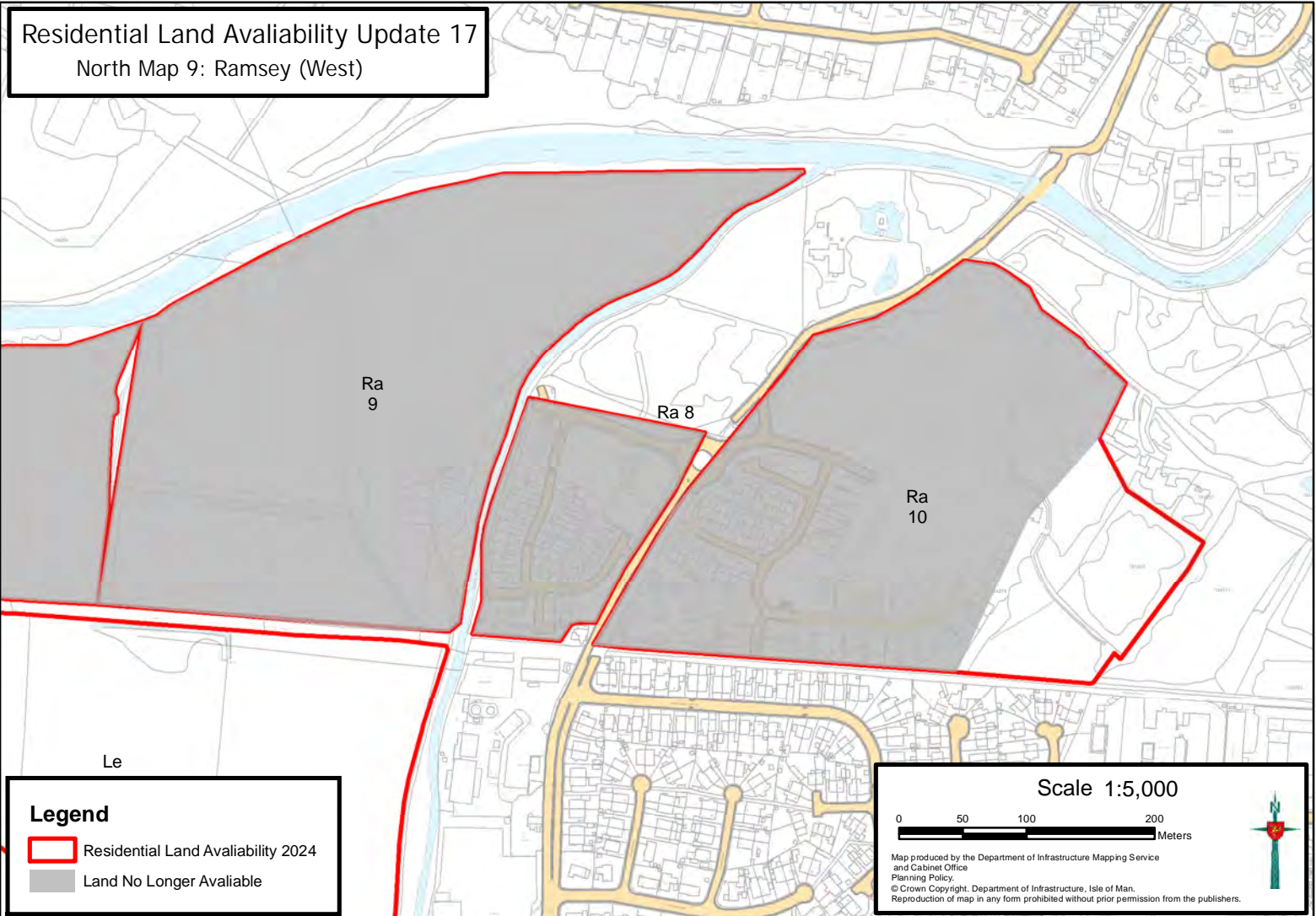
Scale 1:10,000



Map produced by the Department of Infrastructure Mapping Service and Cabinet Office Planning Policy.
© Crown Copyright, Department of Infrastructure, Isle of Man.
Reproduction of map in any form prohibited without prior permission from the publishers.

Residential Land Availability Update 17

North Map 9: Ramsey (West)





Ra 9

Ra 8

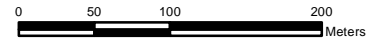
Ra 10

Le

Legend

-  Residential Land Availability 2024
-  Land No Longer Available

Scale 1:5,000

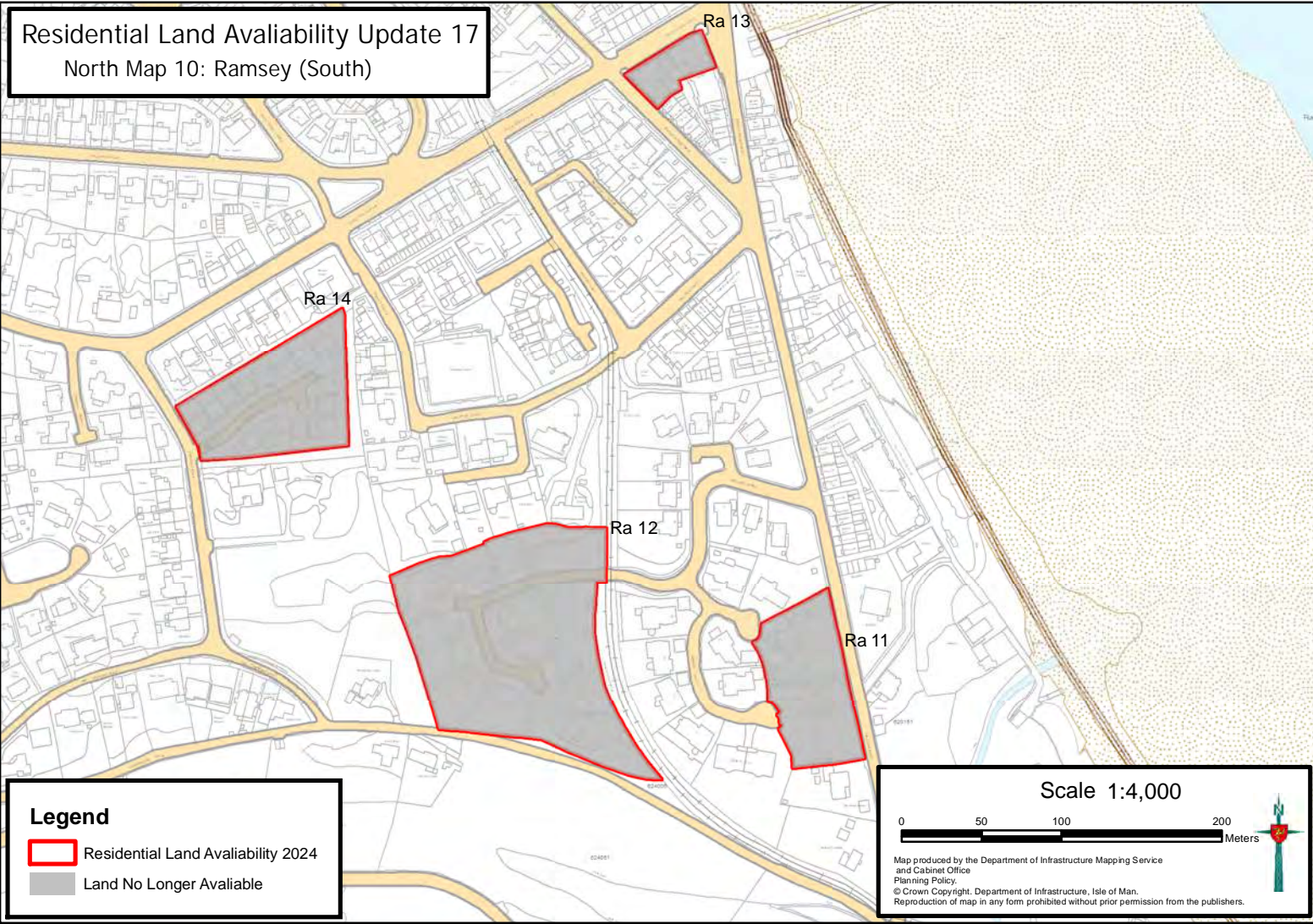


Map produced by the Department of Infrastructure Mapping Service and Cabinet Office Planning Policy.
© Crown Copyright, Department of Infrastructure, Isle of Man.
Reproduction of map in any form prohibited without prior permission from the publishers.





Residential Land Availability Update 17

North Map 10: Ramsey (South)



Legend

-  Residential Land Availability 2024
-  Land No Longer Available

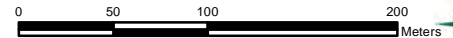
Ra 13

Ra 14

Ra 12

Ra 11

Scale 1:4,000



Map produced by the Department of Infrastructure Mapping Service and Cabinet Office Planning Policy.
© Crown Copyright, Department of Infrastructure, Isle of Man.
Reproduction of map in any form prohibited without prior permission from the publishers.



Residential Land Availability Update 17

North Map 11: Ramsey (Centre)

RM006



RM004

RM003

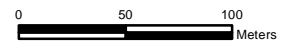
RM005

RM002

Legend

-  Residential Land Availability 2024
-  Land No Longer Available

Scale 1:3,544



Map produced by the Department of Infrastructure Mapping Service and Cabinet Office Planning Policy.
© Crown Copyright, Department of Infrastructure, Isle of Man.
Reproduction of map in any form prohibited without prior permission from the publishers.

