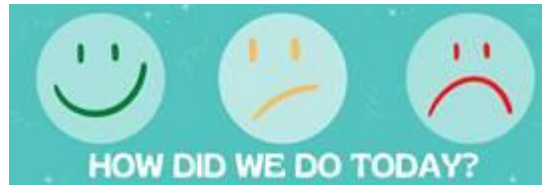


## **IN THE KNOW: Keeping Staff Informed**

**Volume 19 (19) May 2024**

Struggling to access any of the articles in the bulletin today? Some may be available via [Athens](#) (for eligible library members), you can check [using Google Scholar](#). Article not available via Athens or you don't have a login? [Request the article](#) from the library! Not a member yet? You can [join here](#).

Check out our library [website](#) and our [Twitter](#) for details of all our services, facilities and any forthcoming events.



**Do you have feedback about library resources, staff, or spaces? Share it here:** <https://www.surveymonkey.com/r/KDFeedback>

### **In this issue:**

**IN THE SPOTLIGHT**

**MANX SKEET**

**STAFF HEALTH & WELLBEING**

**HOT OFF THE PRESS**

**PUBLIC HEALTH**

**EVIDENCE BASED PRACTICE**

**SOCIAL AND COMMUNITY CARE**

**HEALTH MANAGEMENT**

**PATIENT INFORMATION**

**LIBRARY BITS AND PIECES**

## IN THE SPOTLIGHT

[NHS patients to access world-leading laser beam surgery to prevent epileptic seizures](#)

[APOE4 homozygosity represents a distinct genetic form of Alzheimer's disease](#)

## STAFF HEALTH & WELLBEING

[MHK questions public sector worker overpayments](#)

[Bus Vannin fares and routes to change from May 7](#)

[Info Commissioner issues social media advice to public servants](#)

['Runway closures should be scrapped by end of summer', says Airport Director](#)

[The top 10 most popular barbecue recipes](#)

[Personalised yoga for burnout and traumatic stress in junior doctors](#)

[10 morning stretches to help you start your day](#)

[Time for a rebalance: psychological and emotional well-being in the healthcare workforce as the foundation for patient safety](#)

[Weekend Northern Lights show for Island?](#)

## Useful links

[\*\*Patient.co.uk\*\*](#)

[\*\*NHS Website\*\*](#)

[\*\*Mental Health Foundation\*\*](#)

[\*\*World Health Organisation\*\*](#)



## MANX SKEET

[People encouraged to have open and honest conversation about death](#)

[Public sector job cuts 'needed to address financial gap'](#)

[Chamber of Commerce calls on gov to address immigration challenges](#)

[Free Shingles jabs for over 65s still 'under review'](#)

[Are gas supplies being cut off illegally?](#)

[Residency requirements and 2027 implementation among proposed changes to assisted dying bill](#)

[Prison mental health services unsafe, review says](#)

[Free Period Product Pick up Point set up in Douglas](#)

[Health Minister responds to NHS app issues in HOK](#)

[New defib machine installed in Central Douglas](#)

[Building of Sexual Assault Referral Centre underway](#)

[Health Minister says Braddan Roundhouse row is over safety](#)

[20 MHKs Vote in Favour of Introducing Free Period Product Bill](#)

[Chief Minister says cannabis farm app hasn't been finalized](#)

[Barrister warns of failures from other jurisdictions with assisted dying](#)

[Workshops to mark Deaf Awareness Week](#)

[Ask permission before taking photos at Manx Care sites](#)

[Cannan: 'I will be proposing referendum on assisted dying'](#)

[Social media has an influence on young people, warns charity](#)

[Mental health workers complete CBT postgrad](#)

## HOT OFF THE PRESS BBC News

[We need to normalise death and dying, says carer](#)

[‘I have a 50:50 chance of developing Alzheimer’s in my 50s’](#)

[How the NHS has run out of jobs for new doctors](#)

[Why mortgage rates are going up, not down](#)

[Licence ban extended on London fertility clinic](#)

[Whooping cough cases up again as five babies die](#)

[Hundreds of infected blood victims living with undetected Hep C](#)

[Gene-therapy leap restores baby girl's hearing](#)

[Agency charging NHS nearly £2,000 for nurse shift](#)

[AstraZeneca to withdraw Covid vaccine](#)

[Mum never got over injecting son with infected blood](#)

[Antisemitism complaints surge after Hamas attacks](#)

[Girl's brain tumour misdiagnosed for three years](#)

[NHS data stolen in cyber attack published on dark web](#)

[Assisted dying debate terrifying for disabled, says Liz Carr](#)

[NHS problems leave new doctors without jobs](#)

[Five surprisingly simple ways to optimise your diet](#)

[Mum ignored test and got cancer says BBC presenter](#)

[Victims infected with Hep C after blood screening began](#)

### Useful Health Links

[NHS Website: A-Z of health conditions](#)

[NHS Website](#)

[Check NHS standards near you](#)

[Cancer Help UK](#)

[British Heart Foundation](#)

[Health and Care Professions Council](#)

[Mental Health Foundation](#)

[General Medical Council](#)

[Nursing and Midwifery Council](#)

[Care Quality Commission](#)

[NICE](#)

[NHS Scotland](#)

[Health in Wales](#)

[NI Direct](#)

[Clinical trials information](#)

[Diabetes UK](#)

[British Lung Foundation](#)

[National Obesity Forum](#)

## Critical Thinking

Do you believe everything you read? Is there truth behind the headlines? Why does false information spread so fast on social media? What can you do to make sure you don't get taken in? Start by looking up the stories on websites such as the ones below:

[BBC Reality Check](#)

[Full fact](#)

[Ferret Fact Service](#)

[British Heart Foundation – Behind the headlines](#)

## Misinformation

Do you keep a look out for misinformation circulating online? Do you know the impact it could have on patients? How do you counter it?

[Factors influencing correction upon exposure to health misinformation on social media: the moderating role of active social media use](#)

[Who Shares Misinformation on Social Media? A Meta-analysis of Individual Traits Related to Misinformation Sharing](#)

[More than a Half Century of Misinformation About Breast Cancer Screening](#)

## Bulletins

**(click to open)**

[Bulletin for clinical commissioning groups \(CCGs\)](#)

[Chief Nursing Bulletin](#)

[Healthcare Science Bulletin](#)

[Compassion in Practice strategy and 6Cs Live!](#)

[Liaison and Diversion Bulletin](#)

[Pharmacy and Medicines Bulletin](#)

[Primary Care Bulletin](#)

[Specialised Commissioning Stakeholder Bulletin](#)

[Revalidation Matters](#)

[Liaison and Diversion Bulletin](#)

[Specialised Commissioning Stakeholder Bulletin](#)



## **PUBLIC HEALTH**

### **Health e-News Bulletin/NLH Public Health Newsletter**

#### **Adult Protection & Safeguarding Domestic Violence**

[Safeguarding carers: literature review on what is known about carers who are abused by the people they provide care for](#)

[Tradwife influencers are quietly spreading far-right conspiracy theories](#)

[Informed and safe, or blamed and at risk? Examining the merits and limits of domestic violence disclosure schemes in Australia and New Zealand](#)

#### **Addiction**

[Cluster analysis of medical students' attitudes regarding people who use drugs: a first step to design a tailored education program](#)

[Human costs of healthcare resilience during the war in Ukraine: Lessons from addiction and HIV treatment](#)

[The impact of introducing alcohol-free beer options in bars and public houses on alcohol sales and revenue: A randomised crossover field trial](#)

[Longitudinal examination of alcohol demand and alcohol-related reinforcement as predictors of heavy drinking and adverse alcohol consequences in emerging adults](#)



## **Allergies**

[Digitally-enabled, person-centred care \(PCC\) in allergen immunotherapy: An ARIA-EAACI Position Paper](#)

[How to hit the allergy target: A critical appraisal of intralymphatic immunotherapy with practical recommendations on ultrasound-guided injections](#)



## **Cardiovascular Disease**

[No benefit of apoA-I infusion after myocardial infarction](#)

[Does Left Atrial Appendage Ligation Improve Outcomes of Atrial Fibrillation Ablation?](#)

[Illusion of revascularization: does anyone achieve optimal revascularization during percutaneous coronary intervention?](#)

[GLP-1 Agonists and SGLT-2 Inhibitors Together Have Greater Cardiorenal Benefits](#)



## **Complementary Medicine/Alternative Medicine**

[Evaluating anthelmintic, anti-platelet, and anti-coagulant activities, and identifying the bioactive phytochemicals of Amaranthus blitum L.](#)

[Views of Hong Kong Chinese medicine practitioners on the application of the "Chinese Medicine Anti-epidemic Plans" prepared by the Chinese medicine expert group of central authorities: a focus group study](#)

## Critical Care

[Diastolic/systolic blood pressure ratio for predicting febrile children with sepsis and progress to septic shock in the emergency department](#)

[Exploring factors influencing time from dispatch to unit availability according to the transport decision in the pre-hospital setting: an exploratory study](#)

[Exploring the consequences of nurses' involvement in disaster response: findings from a qualitative content analysis study](#)

## Dementia

[High plasma homocysteine levels predict the progression from mild cognitive impairment to dementia](#)

[Loss of glycine receptors in the nucleus accumbens and ethanol reward in an Alzheimer's Disease mouse model](#)

## Dental



[Harmonization of clinical practice guidelines for primary prevention and screening: actionable recommendations and resources for primary care](#)

[Independent and combined effects of smoking, drinking and depression on periodontal disease](#)

[WNT3 promotes chemoresistance to 5-Fluorouracil in oral squamous cell carcinoma via activating the canonical  \$\beta\$ -catenin pathway](#)

[Feasibility and impact of three-dimensional \(3D\) printing technology in simulated teaching of congenital malformations](#)



## Diabetes

[Repurposed cancer drug could treat diabetes by nudging pancreatic acinar cells to produce insulin](#)

[Clustering of health behaviors and their associations with cardiometabolic risk factors among adults at high risk for type 2 diabetes in India: A latent class analysis](#)

[Antenatal oral glucose tolerance test abnormalities in the prediction of future risk of postpartum diabetes in women with gestational diabetes: Results from the LIVING study](#)



## Diet, Nutrition and Obesity

[Obesity pharmacotherapy in older adults: a narrative review of evidence](#)

[Improved nutrition, sanitation linked to beneficial changes in child stress and epigenetic programming](#)

[Dietary changes may treat pulmonary hypertension](#)



## Digital Health Technology

[St Bartholomew's Hospital deploys AI to spot missed appointments](#)

[Invatech to roll out electronic prescribing across Wales](#)



## **End of Life Care**

[Consensus-based recommendations for the development and expansion of palliative day care clinics in Germany: results of a Delphi study](#)

[End of life decision making when home mechanical ventilation is used to sustain breathing in Motor Neurone Disease: patient and family perspectives](#)

[Virtual consultations: the experience of oncology and palliative care healthcare professionals](#)



## **Immunisation and Infection**

[Susceptibility testing of the live attenuated tuberculosis vaccine BCG and the vaccine candidate MTBVAC to currently WHO-recommended anti-tuberculosis drugs by the EUCAST method](#)

[Molecular surveillance of carbapenem-resistant Enterobacterales in two nearby tertiary hospitals to identify regional spread of high-risk clones in Germany, 2019-2020](#)

[A comprehensive qualitative investigation of the factors that affect surgical site infection prevention in cardiac surgery in England using observations and interviews](#)

[Effectiveness of Autumn 2023 COVID-19 vaccination and residual protection of prior doses against hospitalisation in England, estimated using a test-negative case-control study](#)

[Modifying antibiotic treatment strategies in the face of pertussis surge associated to erythromycin resistance in China](#)

[Reporting of deaths during cholera outbreaks: case fatality ratio and community deaths](#)

## **Inclusion and Diversity**

[The power of the team: Harnessing collaboration, diversity and challenge](#)

[Supporting NHS staff with long COVID](#)

['Saviours': how community health and wellbeing workers are helping to tackle health inequalities in England](#)

[Tackling bullying in the NHS – unions pull together to launch new standards for international recruitment](#)

[Staff experiences of wearing the Rainbow Badge in a paediatric hospital setting: a mixed-methods survey](#)

## **Medical Education**

[Enhancing academic performance and student engagement in health education: insights from Work Station Learning Activities \(WSLA\)](#)

[Feasibility and impact of three-dimensional \(3D\) printing technology in simulated teaching of congenital malformations](#)

[The effect of simulation of sectional human anatomy using ultrasound on students' learning outcomes and satisfaction in echocardiography education: a pilot randomized controlled trial](#)

[Trainee advocacy for medical education on the care of people with intellectual and/or developmental disabilities: a sequential mixed methods analysis](#)

[Enhancing academic performance and student engagement in health education: insights from Work Station Learning Activities \(WSLA\)](#)

## **Mental Health**

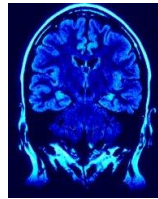


[Mental healthcare for ethnic minority groups: a call for substantial change](#)

[How do Black and South Asian women experience perinatal mental health services?](#)

[Predictive coding and phenomenological approaches of delusions: convergence and differences](#)

[Nurse prescribers as key players in shared decision making in psychiatry](#)



## **Neurology**

[Comparison of sex differences on outcomes after aneurysmal subarachnoid hemorrhage: a propensity score-matched analysis](#)

[Symptoms at stroke onset as described by patients: a qualitative study](#)

[Assessing the impact of migraine on benign paroxysmal positional vertigo symptoms and recovery](#)

## Obstetrics

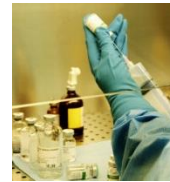
[Developmental uterovaginal anomalies and histologic findings in transgender patients receiving gender-affirming hysterectomies: A large case series](#)

[Association between cytokine polymorphisms and recurrent pregnancy loss: A review of current evidence](#)

[Reviving forgotten techniques: Vaginal salpingectomy in public health system, a retrospective cohort study](#)

[Retraction: Randomized controlled trial of the effect of bilateral uterine artery ligation during cesarean among women at risk of uterine atony](#)

[A population-based time-series analysis of opioid agonist treatment dispensed during pregnancy](#)



## Oncology

[Long-term survival for lymphoid neoplasms and national health expenditure \(EUROCare-6\): a retrospective, population-based study](#)

[Finding the health-care expenditure that drives variation in cancer survival](#)

[Combining the prognostic role of age with molecular advances in the understanding of endometrial cancer](#)

## Ophthalmology

[Does collagen cross linking have any effect on retinal circulation in patients with keratoconus? An optical coherence tomography angiography \(OCTA\) study](#)

[Construction of oxidative phosphorylation-related prognostic risk score model in uveal melanoma](#)

[Observation of structural and vascular features of retina and choroid in myopia using ultra-widefield SS-OCTA](#)

[Refraction and ocular biometric parameters in 3-to 6-year-old preschool children : a large-scale population-based study in Chengdu, China](#)



## **Paediatrics**

[Present status of scheduled vaccinations and vaccination-related bleeding in Chinese children with haemophilia](#)

[18F-FDG PET/CT in paediatric Staphylococcus aureus bacteraemia](#)

[No safe time window in malrotation and volvulus: A consecutive cohort study](#)

[Pubertal retroareolar cysts presenting as bluish lumps: New cases and literature review](#)

## **Pain Medicine**

[The Use of Arts-Based Research in Chronic Pain: A Scoping Review](#)

[Blood cadmium level as a risk factor for chronic pain: NHANES database 1999-2004](#)

[Adapting and Evaluating a Theory-Driven, Non-Pharmacological Intervention to Self-Manage Pain](#)

## **Patient Experience**

[The relationship between patient experience and real-world digital health access in primary care: A population-based cross-sectional study](#)

[A patient perspective on kidney disease in the public health agenda](#)

## Pharmacology



All Wales Medicines Strategy Group recommends dabrafenib plus trametinib for the treatment of inoperable anaplastic thyroid cancer with the BRAF V600E variant

Risk Minimisation Materials for Caprelsa (vandetanib)

DTB select: Increasing awareness of the risk of death from a propranolol overdose

Risk of gastrointestinal perforation in patients with rheumatic diseases exposed to janus kinase inhibitors versus adalimumab: nationwide cohort study

## Primary Care

Is Fee-for-Service Compatible with Comprehensive Primary Care?

Medical professionals should not be 'forced' to assist patients to end their lives, MPs told

GPs alerted of side effects associated with prostate and hair loss drug

UK GP leaders to vote on linking contract funding to inflation

GPs to vote on PAs being blocked from anything but admin tasks

GPs having to provide advice on alternatives amid 'daily' medicines shortages



## Seniors and Aging

[Loneliness common among older informal caregivers, says report](#)

[Long-Term Follow-Up of Early vs. Delayed Levodopa Use](#)

[New Randomized Trial Data on a Patch-Pump Approach for Treatment of Parkinson Disease](#)

[Rethinking 'socially admitted' patients to improve care](#)



## Sexual Health

[Identifying, characterizing, and targeting chlamydial virulence factors to unleash the power of host cell-autonomous immunity](#)

[Sexual dysfunction in patients with cancer, a challenge in oncology practice: results of the CLARIFY project](#)

## Sleep Medicine

[Resting-State fMRI Network Efficiency as a Mediator in the Relationship Between the Glymphatic System and Cognitive Function in Obstructive Sleep Apnea Hypopnea Syndrome: Insights from a DTI-ALPS Investigation](#)

[Multidimensional phenotyping to distinguish among distinct obstructive sleep apnea, chronic obstructive pulmonary disease, and overlap syndrome phenotypes](#)

[Lifestyle Factors Associated with Symptoms Suggestive of Restless Legs Syndrome in Korean Adolescents](#)

[Prevalence of insomnia in a general adult population cohort using different diagnostic criteria: The seventh survey of the Tromsø Study 2015-2016.](#)





## **Sports Medicine/Fitness**

[Identifying and Minimizing Incentives for Competing Interests in Sports Medicine Publications](#)

[Challenges and opportunities of artificial intelligence implementation within sports science and sports medicine teams](#)

[The effects of kettlebell training versus resistance training using the own body mass on physical fitness and physiological adaptations in obese adults: a randomized controlled trial](#)

## **Surgery**

[Metal-backed or all-poly tibial components: which are better for medial unicompartmental knee arthroplasty? A propensity-score-matching retrospective study at the 5-year follow-up](#)

[Transcatheter versus surgical aortic valve replacement for severe aortic valve stenosis: Meta-analysis with trial sequential analysis](#)

[Surgical versus transcatheter aortic valve replacement in low-risk Medicare beneficiaries](#)

[Preoperative exercise training decreases complications of minimally invasive lung cancer surgery: A randomized controlled trial](#)



## **Vaping/Smoking**

[Estimating causality between smoking and abdominal obesity by Mendelian randomization](#)

[Comprehensive vaping bans are associated with lower odds of initiation into electronic nicotine delivery systems use among young people](#)

## **World Health Organisation**

[Rafah incursion would substantially increase mortality and morbidity and further weaken an already broken health system](#)

[WHO Results Report 2023 shows notable health achievements and calls for concerted drive toward Sustainable Development Goals](#)

## **Wound Management**

[A Multifunctional Hydrogel Fabricated by Direct Self-Assembly of Natural Herbal Small Molecule Mangiferin for Treating Diabetic Wounds](#)

[Improvement of skin wound healing by giant salamander skin mucus gel wrapped with bone marrow mesenchymal stem cells via affecting integrin family molecules](#)

[Wound Fluid Extracellular Microvesicles: A Potential Innovative Biomarker for Wound Healing](#)

[Deep Red Light Driven Hydrogen Evolution by Heterojunction Polymer Dots for Diabetic Wound Healing](#)

## SOCIAL AND COMMUNITY CARE

[Self-Care A-Z: Self-Care Is Elemental](#)

[Social Work England committed 'abuse of power' in 'punishing' practitioner's gender critical beliefs](#)

[DHSC to publish every council's waiting times for adult social care assessments and services](#)

[Social work across the decades: the Maria Colwell inquiry](#)

['Hundreds of social workers left in limbo': BASW and unions urge action on fitness to practise delays](#)

[Social workers begin strike over 'unsafe' staffing levels](#)

[Get up to speed with the DfE's children's social care reforms](#)

[Reporting on Health Care and Social Service Provider Approaches to Promoting Alcohol Abstinence During Pregnancy](#)

[" Well, I think it's institutional racism:" How pediatric dialysis and transplant social workers explain racial disparities for black children in access to kidney ...](#)

[Service Provider Perspectives on Advance Care Planning Use in Rural Dementia Patients and Caregivers: A Qualitative Study](#)

[Factors Affecting Marginalized Older Peoples' Digital Exclusion Evaluated by Gerontological Social Work Professionals](#)

["I'm Part of Something That Matters": Exploring What Older Adults Value Through Their Engagement in Age-Friendly Community Initiatives](#)

[Formal and Informal Support among Mothers Aging out of Foster Care and Maternity Group Homes: Who Steps in When Mothers Age Out?](#)

[Podcast: using new approaches to promote 'old school' social work for older adults](#)

[Social workers from 22 bodies to develop resources to cut workloads](#)

### Key Resources

[e-Learning](#)

[Social Care Online](#)

[Research Register for Social Care](#)

[Social Care Research Ethics Committee](#)

## HEALTH MANAGEMENT

[Stakeholder expectations of the social care workforce](#)

[England's widening health gap: local places falling behind](#)

[Organisational anxiety and what leaders are \(or aren't\) doing about it](#)

[Making the grade: prioritising performance in Whitehall](#)

[Stakeholder expectations of the social care workforce](#)

[What do social care providers think of younger workers?](#)

[What are primary care services?](#)

[How would clinicians use time freed up by technology?](#)

[Addressing health inequalities across allied health professional \(AHP\) services: a guide for AHP system leaders](#)

[Rapid evidence review: tackling inequalities through the regulation of services and organisations](#)

[Co-production and engagement with communities as a solution to reducing health inequalities](#)

[Confronting antimicrobial resistance 2024 to 2029](#)

[National learning report: factors affecting the delivery of safe care in midwifery units](#)

[Levelling up or levelling down: the impact of integrated care systems on the delivery of care](#)

[Medicines shortages](#)

[Enabling investment in digital and AI-driven medical imaging](#)

[Statutory guidance: NHS \(General Medical Services - Premises Costs\) Directions: previous directions](#)

[Statutory guidance: NHS \(General Medical Services - Premises Costs\) Directions](#)

**BMJ Evidence Updates**

[Bacterial growth in patients with low back pain and Modic changes: protocol of a multicentre, case-control biopsy study](#)

[Non-physician anaesthesia providers perspectives on task sharing practices in Zambia and Somaliland: a qualitative study](#)

[Risk of transmission of HIV to infants during breast/chest feeding when mothers/birthing parents living with HIV are on antiretroviral therapy: a protocol for a rapid review](#)

[Australian trial of behavioural activation for people with schizophrenia experiencing negative symptoms: a feasibility randomised controlled trial protocol](#)

[Associations between knowledge of health issues and health care satisfaction and propensity to complain: a cross-sectional survey of adult men in Denmark](#)

[Evaluation of system based psychological first aid training on the mental health proficiency of emergency medical first responders to natural disasters in China: a cluster randomised controlled trial](#)

[Effectiveness and cost-effectiveness of a 12-month automated text message intervention for weight management in postpartum women with overweight or obesity: protocol for the Supporting MumS \(SMS\) multisite, parallel-group, randomised controlled trial](#)

[Effect of passive leg raising on the cross-sectional area of the right internal jugular vein in patients with obesity: a randomised controlled trial protocol](#)

[Feasibility of continuous glucose monitoring in patients with type 1 diabetes at two district hospitals in Neno, Malawi: a randomised controlled trial](#)

[Peroperative administration of tranexamic acid in Roux-en-Y and one-anastomosis gastric bypass to reduce haemorrhage in patients with morbid obesity: protocol for randomised controlled trial \(PATRY trial\)](#)

[Contextually appropriate nurse staffing models: a realist review protocol](#)

[Association between non-alcoholic fatty liver disease and risk of sarcopenia: a systematic review and meta-analysis](#)

[Do patients with nephrotic syndrome have an increased risk of osteoporosis? A nationwide population-based retrospective cohort study in Taiwan](#)

[Cohort profile: EFTER-COVID - a Danish nationwide cohort for assessing the long-term health effects of the COVID-19 pandemic](#)

[Appropriateness and acceptability of continuous glucose monitoring in people with type 1 diabetes at rural first-level hospitals in Malawi: a qualitative study](#)

[COS-PPA: protocol to develop a core outcome set for primary progressive aphasia](#)

[EvolvRehab-MoveWell telerehabilitation for stroke survivors: study protocol for a feasibility with embedded initial proof-of-concept study](#)

[Congenital glottic stenosis as a clinical manifestation of FREM1-associated disorders in a neonate with respiratory distress and aphonia](#)

[Chronic diarrhoea, weight loss and a positive anti-tissue transglutaminase antibody: A case report of olmesartan-induced enteropathy](#)

[Phthiriasis palpebrarum masquerading as blepharitis](#)

[Strategies for optimising early detection and obstetric first response management of postpartum haemorrhage at caesarean birth: a modified Delphi-based international expert consensus](#)

[Association between indoor air pollution and depression: a systematic review and meta-analysis of cohort studies](#)

[Facilitators, barriers and impacts to implementing dementia care training for staff in long-term care settings by using fully immersive virtual reality: a scoping review protocol](#)

[Use of artificial intelligence in obstetric and gynaecological diagnostics: a protocol for a systematic review and meta-analysis](#)

[Patient, caregiver and other knowledge user engagement in consensus-building healthcare initiatives: a scoping review protocol](#)

[Immediate versus delayed single blastocyst transfer following the first stimulated IVF cycle in the freeze-all strategy: a study protocol for a randomised controlled trial](#)

[Wildfire, deforestation and health in tropical rainforest areas: a scoping review protocol](#)

[Relationship between self-psychological adjustment and post-traumatic growth in patients with lung cancer undergoing chemotherapy: a cross-sectional study](#)



## Cochrane

[What are the benefits of giving regular antiviral medications to prevent cytomegalovirus disease, death and side effects in solid organ transplant recipients](#)

[Using samples obtained by bronchoscopy to decide how to treat lung infections in people with cystic fibrosis](#)

[Zinc for the prevention and treatment of the common cold](#)

[Does exposure to the smell and taste of milk accelerate feeding in tube-fed preterm infants?](#)

[Accuracy of a first- and second-trimester ultrasound scan for identifying fetal anomalies in low-risk and unselected pregnancies](#)

[Do calcium supplements help people with overweight or obesity lose weight?](#)

[Keyhole \(laparoscopic\) versus traditional \(open\) surgery for people donating a kidney](#)

[Can medications like varenicline and cytisine \(nicotine receptor partial agonists\) help people to stop smoking and do they cause unwanted effects?](#)

[What are the effects of antibiotics on pain and swelling caused by inflammation or infection at the root of the tooth in adults?](#)

[Is there a best way to remove dead tissue from surgical wounds?](#)

[Collaborative care approaches for people with severe mental illness](#)



NICE Clinical Knowledge Summaries provides primary care practitioners with a readily accessible summary of the current evidence base and practical guidance on best practice in respect of over 300 common and/or significant primary care presentations.

The service is being regularly maintained and upgraded as and when significant new evidence emerges and up to 10 new topics will be added each year. You can access the service [here](#).

### **National Institute for Health Research (NIHR) Health Technology Assessment**

[How to deprescribe in primary care](#)

### **DoH Press Releases/New Publications**

[Guidance: Addressing health inequalities across allied health professional \(AHP\) services: a guide for AHP system leaders](#)

[Policy paper: UK 5-year action plan for antimicrobial resistance 2024 to 2029](#)

[Consultation outcome: Fixed recoverable costs in lower damages clinical negligence claims – a supplementary consultation on disbursements](#)

[Press release: New 5-year plan to combat antimicrobial resistance](#)



## **LIBRARY "BITS AND PIECES"**

### **Published recently? Completed a research project?**

Tell us about it! Fill out our publication or research repository form by clicking [here](#) and we'll display your work on our website

[Publication repository](#)

[Research repository](#)

The above current awareness bulletin has been produced by Keyll Darree Library and Information Service. We aim to produce the bulletin every week. If you need any help locating or accessing any of the items included in this issue, please contact the library staff on 642993/642974.

As usual, we welcome any feedback, so please let us know if you have any comments about format, content, length, arrangement or indeed, any other observations. If you know of anyone else who might like to receive the bulletin, or you would like your name removed from the distribution list, again, please let us know.

Check out our library website at [www.librarykeylldarree.gov.im](http://www.librarykeylldarree.gov.im) for details of all our services, facilities and any forthcoming events.