



NOTICE TO MARINERS

No. 05 of 2024

Notice of Survey

The Harbours Division of the Department of Infrastructure wishes to advise mariners that Moir Vannin (UK) Limited have commissioned a series of geophysical surveys within Isle of Man waters in relation to the proposed Offshore Windfarm.

The attached information from Moir Vannin shows the extent of the surveys. The surveys are to be carried out from 22nd March 2024 until completion.

The survey will be carried out by XOCEAN with the use of unmanned vessels and mariners are advised to maintain a safe distance while navigating.

All current notices can be viewed at: <https://www.gov.im/categories/travel-traffic-and-motoring/harbours/navigation-advice>

For further information please contact:

Marine Operations Centre, Douglas Harbour on VHF Ch12 or Tel 01624 686628.

Gary Lewin
Deputy Harbour Master
Isle of Man Harbours Division
18th March 2024



Moor Vannin

Notice to Mariners

Notice of Geophysical Survey Commencement

Date: 22 March 2024

1 Introduction

Mariners are advised that Moor Vannin (UK) Limited (hereafter 'Moor Vannin') will be commencing a scope of geophysical survey works in March 2024 at the sites listed below. The surveys are being undertaken for the purposes of geophysical investigation for the proposed Moor Vannin Offshore Windfarm.

2 Area of operations

The extent of the area in which the survey will be conducted is shown in Figure 1.

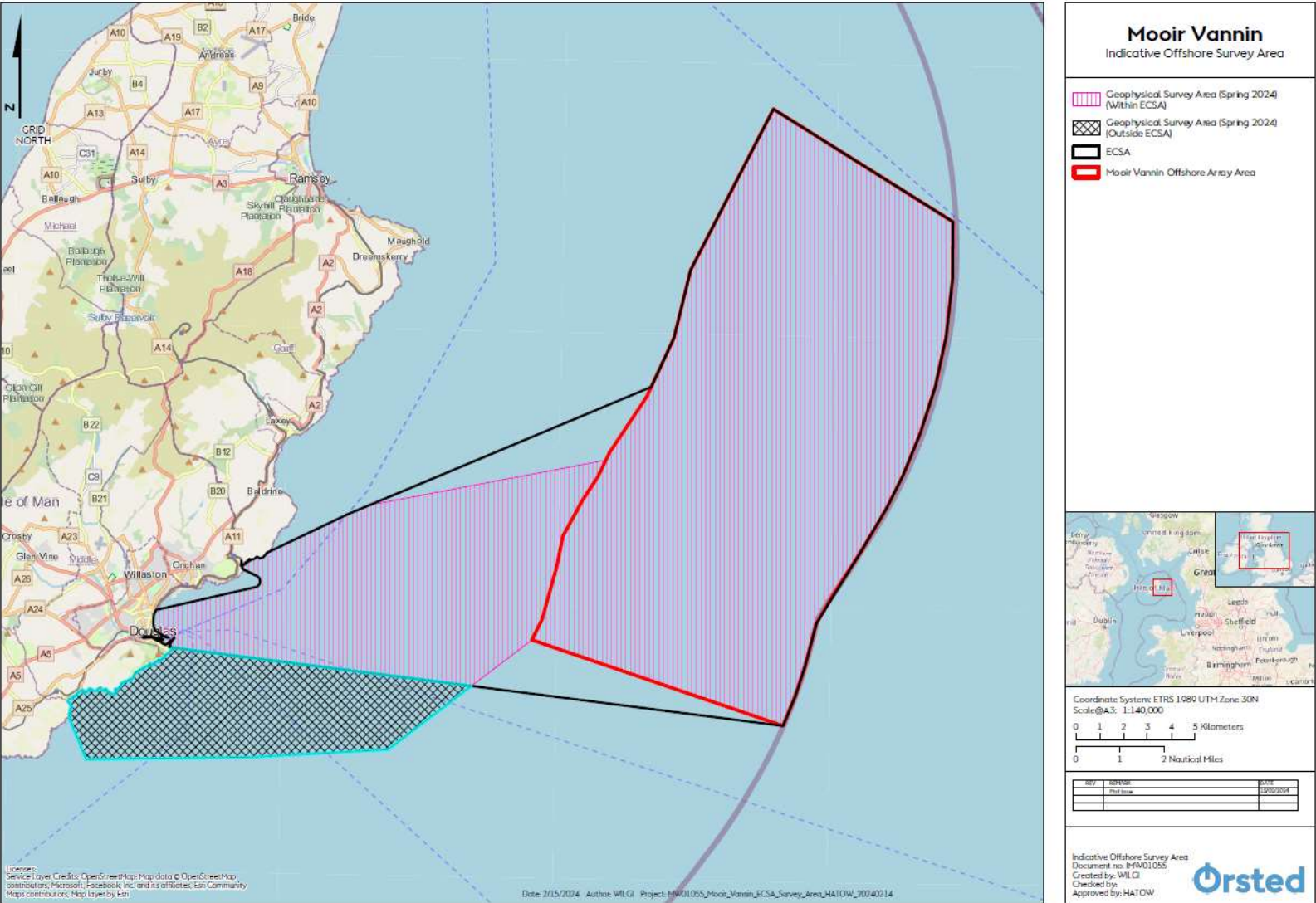


Figure 1: Moir Vannin Survey Coverage

3 Proposed activities

3.1 Proposed survey activity

Please be advised that the operations, carried out by XOCEAN, are anticipated to mobilise from Whitehaven (UK) with investigations targeting the site between 22 March 2024 to 30 April 2024. The exact survey dates are dependent on weather and work progress.

The survey will be undertaken by up to 6 Uncrewed Survey Vessels. Of these, two will be towing survey equipment and so will have reduced manoeuvrability whilst on site. Note that because of this it is requested that all vessels operating near the survey vessels maintain a safe distance.

Survey works will be undertaken 24/7 and the vessels will each be lit to allow night time operation. Each vessel is lit with one all around light and port/starboard lights.

A support vessel will attend the site as required to support the vessels but will not remain on site.

3.2 Safety

It is requested that anybody having knowledge of any potential objects submerged or moored on the seabed within the survey area that could be damaged or form a hazard to the survey vessel and its equipment advises Moir Vannin’s Fisheries Liaison Manager of their position and nature.

Moor Vannin has requested the clearance of static fishing gear within the survey area shown in Figure 1. The vessels will actively transmit an AIS signal and a listening watch will be maintained on VHF channels 12 and 16.

4 Immediate contacts

The contents of this notice are based upon our current understanding of Moir Vannin’s requirements. Enquiries regarding the vessels and survey safety should be directed to:

USV supervisor (24/7) (XOCEAN)	24/7 USV supervisor	
	Tel: +35312239950	E-mail: Usv.supervisor@xocean.com

5 Fisheries Liaison

Fisheries Liaison is provided by Cameron Moffat (Moor Vannin Commercial Fisheries Manager) who can be contacted on:

E-mail: camem@orsted.com	+44 7436048650
--------------------------	----------------

6 Vessels

Operations will be conducted by up to 6 of the vessels detailed below. Final confirmation of the 6 vessels will be confirmed prior to mobilisation. Contact can be made directly with the vessels, where necessary, using the contact details listed below or the contact details in section 4 above.

Vessel Details –		
Vessel Type / Function		Uncrewed Survey Vessel
Vessel telephone		+353 1 223 9950
Vessel email		Usv.supervisor@xocean.com
Vessel Name	Call Sign	MMSI
X-08	MHIJ7	232027631
X-09	MHIJ8	232027632
X-11	MIRG4	232033343
X-16	MKMB2	232039413
X-17	MKMB4	232039414
X-19	MKMB8	232039416
X-21	MLUL2	232042738
X-22	MMIM7	232044014
X-23	MMIM8	232044015
X-26	MOQM9	232052508
X-27	MOUE2	232053292

7 Coordinates

Shown in Figure 1: survey area

Longitude (WGS84)	Latitude (WGS84)
54.18442	54.18442
54.1571	54.1571
54.14152	54.14152
54.12932	54.12932
54.11829	54.11829
54.14915	54.14915
54.13139	54.13139
54.14394	54.14394
54.1471	54.1471

54.15772	54.15772
54.15831	54.15831
54.15849	54.15849
54.16712	54.16712
54.16716	54.16716
54.16722	54.16722
54.16727	54.16727
54.16734	54.16734
54.16741	54.16741
54.16748	54.16748
54.16756	54.16756
54.16765	54.16765
54.16774	54.16774
54.16784	54.16784
54.16794	54.16794
54.16805	54.16805
54.16815	54.16815
54.16827	54.16827
54.16838	54.16838
54.1685	54.1685
54.16862	54.16862
54.16874	54.16874
54.16887	54.16887
54.16899	54.16899
54.16912	54.16912
54.16924	54.16924
54.16937	54.16937
54.1695	54.1695
54.16962	54.16962
54.16975	54.16975
54.16987	54.16987
54.16999	54.16999
54.17011	54.17011
54.17023	54.17023
54.17034	54.17034
54.17045	54.17045
54.17055	54.17055
54.17065	54.17065
54.17075	54.17075
54.17084	54.17084
54.17093	54.17093
54.17101	54.17101
54.17109	54.17109
54.17116	54.17116
54.17122	54.17122
54.17128	54.17128
54.17233	54.17233
54.17352	54.17352
54.17376	54.17376
54.17397	54.17397
54.17502	54.17502
54.17598	54.17598
54.1757	54.1757
54.1771	54.1771
54.17757	54.17757
54.17763	54.17763
54.17852	54.17852
54.17792	54.17792
54.17832	54.17832

54.18016	54.18016
54.18211	54.18211
54.18528	54.18528
54.19145	54.19145
54.1949	54.1949
54.19885	54.19885
54.21733	54.21733
54.21733	54.21733
54.22021	54.22021
54.24153	54.24153
54.24523	54.24523
54.26377	54.26377
54.28951	54.28951
54.35064	54.35064
54.30914	54.30914
54.28824	54.28824
54.26583	54.26583
54.24688	54.24688
54.22908	54.22908
54.21353	54.21353
54.20075	54.20075
54.18442	54.18442
54.13139	54.13139
54.10683	54.10683
54.10304	54.10304
54.10084	54.10084
54.11602	54.11602
54.12173	54.12173
54.12238	54.12238
54.12315	54.12315
54.12372	54.12372
54.12696	54.12696
54.12751	54.12751
54.12975	54.12975
54.134	54.134
54.13871	54.13871
54.14346	54.14346
54.13139	54.13139
