



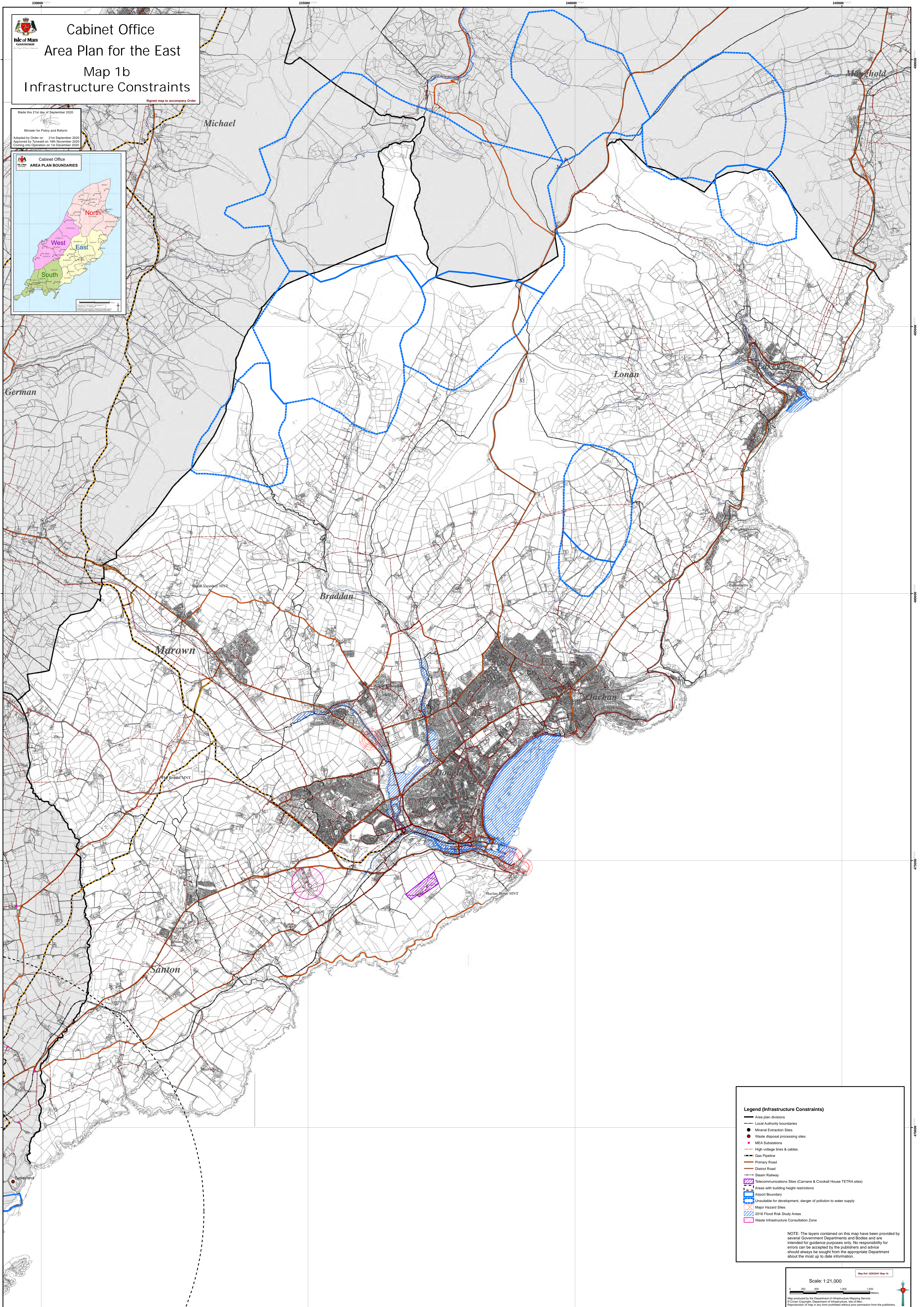
Cabinet Office  
Area Plan for the East  
Map 1b  
Infrastructure Constraints

Signed map to accompany Order

Made this 21st day of September 2020

Minister for Policy and Reform

Adopted by Order on 21st September 2020  
Approved by Tynwald on 18th November 2020  
Coming into operation on 1st December 2020



**Legend (Infrastructure Constraints)**

- Area plan divisions
- Local Authority boundaries
- Mineral Extraction Sites
- Waste disposal processing sites
- MEA Substations
- High voltage lines & cables
- Gas Pipeline
- Primary Road
- District Road
- Steam Railway
- ▨ Telecommunications Sites (Carnane & Crookall House TETRA sites)
- ▨ Areas with building height restrictions
- ▨ Airport Boundary
- ▨ Unsuitable for development, danger of pollution to water supply
- ▨ Major Hazard Sites
- ▨ 2016 Flood Risk Study Areas
- ▨ Waste Infrastructure Consultation Zone

NOTE: The layers contained on this map have been provided by several Government Departments and Bodies and are intended for guidance purposes only. No responsibility for errors can be accepted by the publishers and advice should always be sought from the appropriate Department about the most up to date information.

Scale: 1:21,000

Map produced by the Department of Infrastructure Mapping Services  
© Crown Copyright, Department of Infrastructure, Isle of Man  
Reproduction of map in any form prohibited without prior permission from the publishers.