



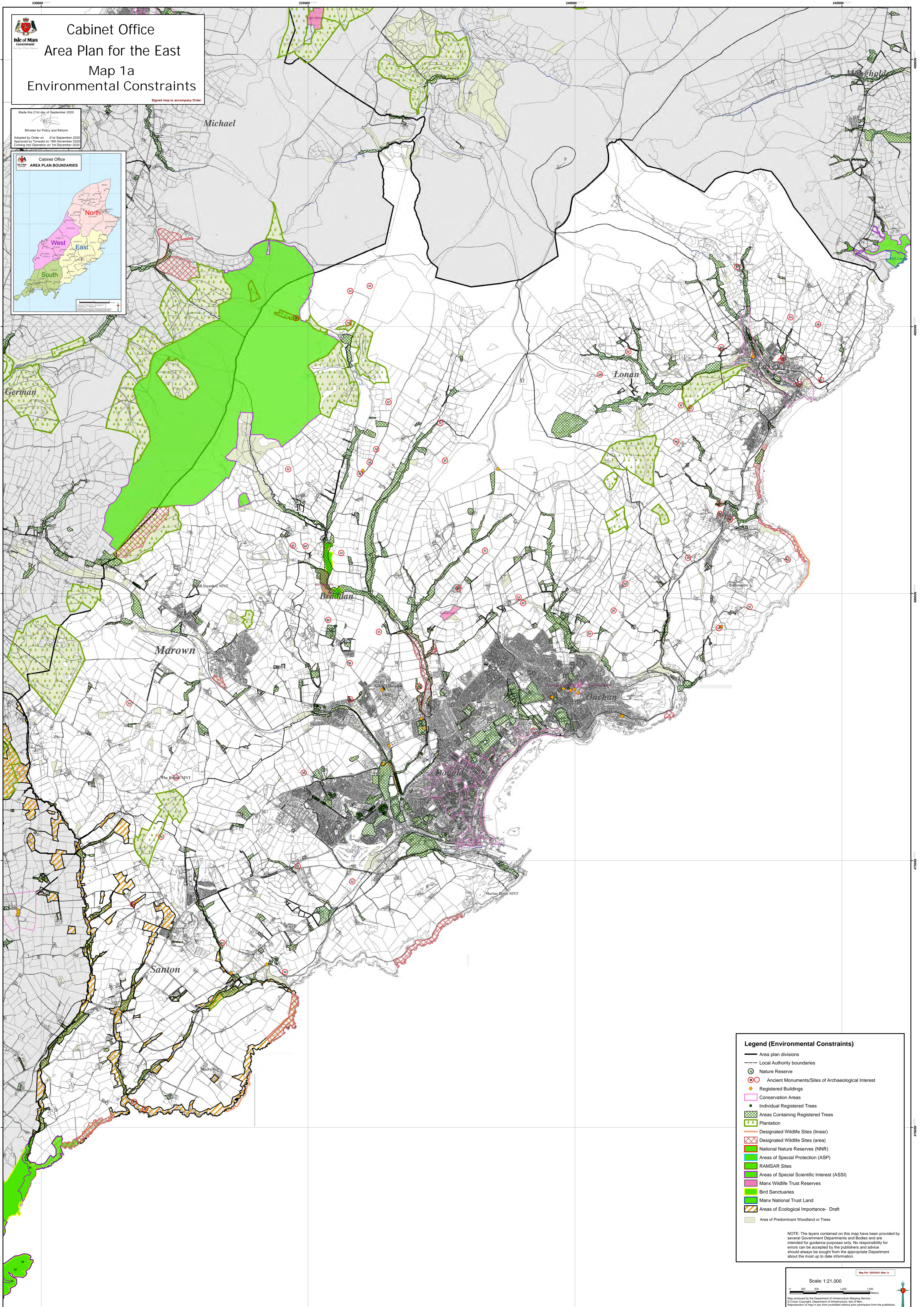
Cabinet Office
Area Plan for the East
Map 1a
Environmental Constraints

Signed map to accompany Order

Made this 21st day of September 2020

Minister for Policy and Reform

Adopted by Order on 21st September 2020
Approved by Tynwald on 16th November 2020
Coming into Operation on 1st December 2020



Legend (Environmental Constraints)

- Area plan divisions
- Local Authority boundaries
- ⊙ Nature Reserve
- ⊙ Ancient Monuments/Sites of Archaeological Interest
- Registered Buildings
- Conservation Areas
- Individual Registered Trees
- ▨ Areas Containing Registered Trees
- ▨ Plantation
- Designated Wildlife Sites (linear)
- ▨ Designated Wildlife Sites (area)
- ▨ National Nature Reserves (NNR)
- ▨ Areas of Special Protection (ASP)
- ▨ RAMSAR Sites
- ▨ Areas of Special Scientific Interest (ASSI)
- ▨ Manx Wildlife Trust Reserves
- ▨ Bird Sanctuaries
- ▨ Manx National Trust Land
- ▨ Areas of Ecological Importance- Draft
- ▨ Area of Predominant Woodland or Trees

NOTE: The layers contained on this map have been provided by several Government Departments and Bodies and are intended for guidance purposes only. No responsibility for errors can be accepted by the publishers and advice should always be sought from the appropriate Department about the most up to date information.

Scale: 1:21,000

Map produced by the Department of Infrastructure Mapping Services
© Crown Copyright, Department of Infrastructure, Isle of Man
Reproduction of map in any form prohibited without prior permission from the publishers.