



Cabinet Office

Area Plan for the East

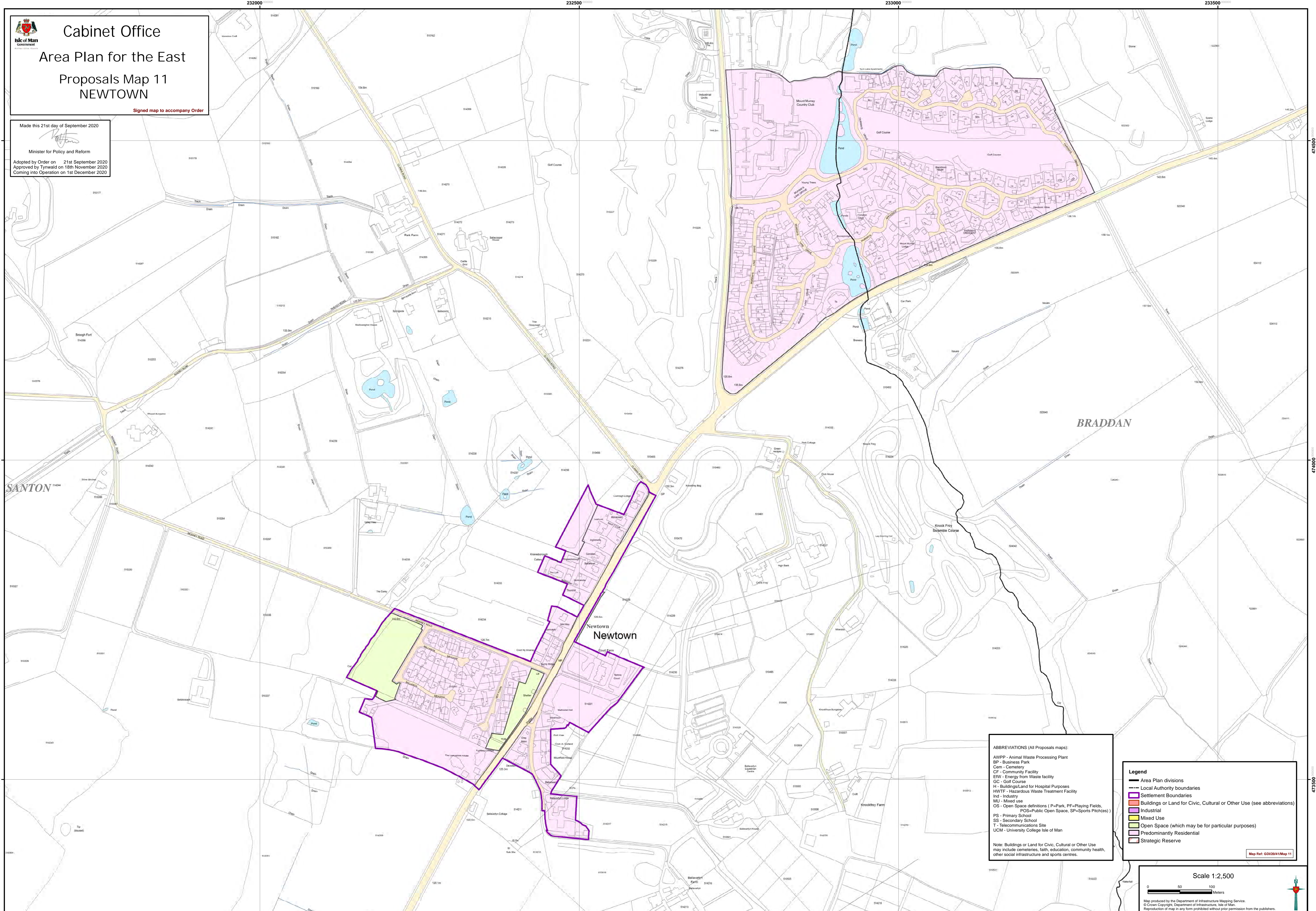
Proposals Map 11 NEWTOWN

Signed map to accompany Order

Made this 21st day of September 2020

Minister for Policy and Reform

Adopted by Order on 21st September 2020
Approved by Tynwald on 18th November 2020
Coming into Operation on 1st December 2020



ABBREVIATIONS (All Proposals maps):

AWPP - Animal Waste Processing Plant
 BP - Business Park
 Cem - Cemetery
 CF - Community Facility
 EFW - Energy from Waste facility
 GC - Golf Course
 H - Buildings/Land for Hospital Purposes
 HWTF - Hazardous Waste Treatment Facility
 Ind - Industry
 MI - Mixed use
 OS - Open Space definitions (P=Park, PF=Playing Fields, POS=Public Open Space, SP=Sports Pitch(es))
 PS - Primary School
 SS - Secondary School
 T - Telecommunications Site
 UCM - University College Isle of Man

Note: Buildings or Land for Civic, Cultural or Other Use may include cemeteries, faith, education, community health, other social infrastructure and sports centres.

- Legend**
- Area Plan divisions
 - Local Authority boundaries
 - Settlement Boundaries
 - Buildings or Land for Civic, Cultural or Other Use (see abbreviations)
 - Industrial
 - Mixed Use
 - Open Space (which may be for particular purposes)
 - Predominantly Residential
 - Strategic Reserve

Scale 1:2,500

0 50 100 Meters

Map produced by the Department of Infrastructure Mapping Service.
 © Crown Copyright, Department of Infrastructure, Isle of Man.
 Reproduction of map in any form prohibited without prior permission from the publishers.

Map Ref: GDI/20/41/Map 11